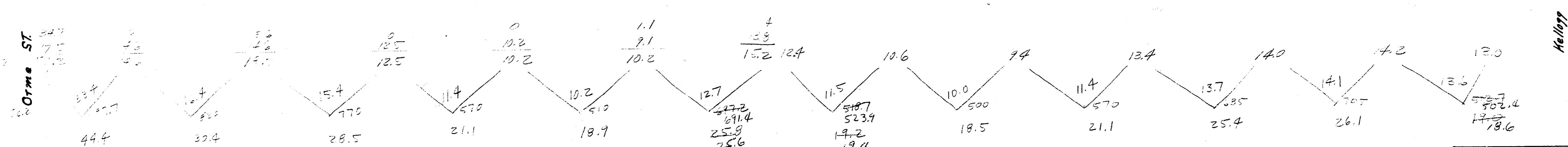
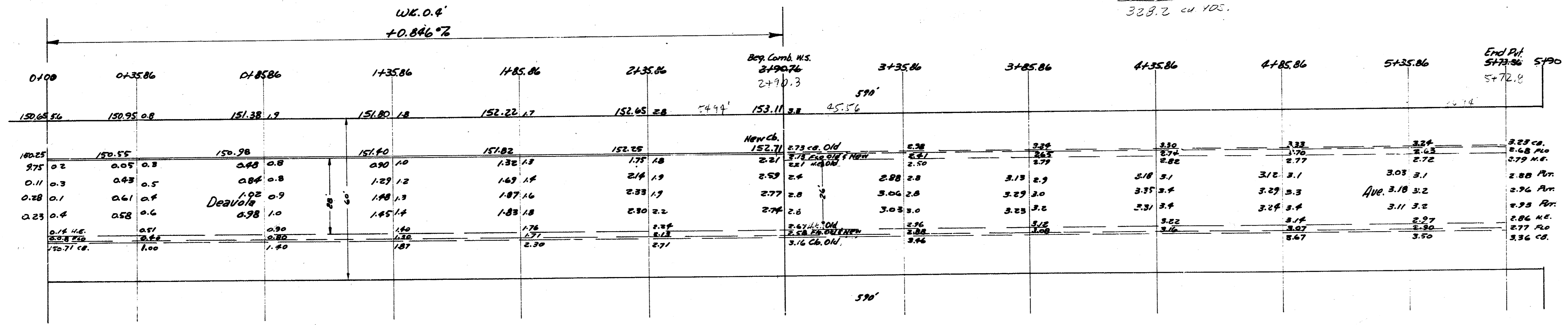


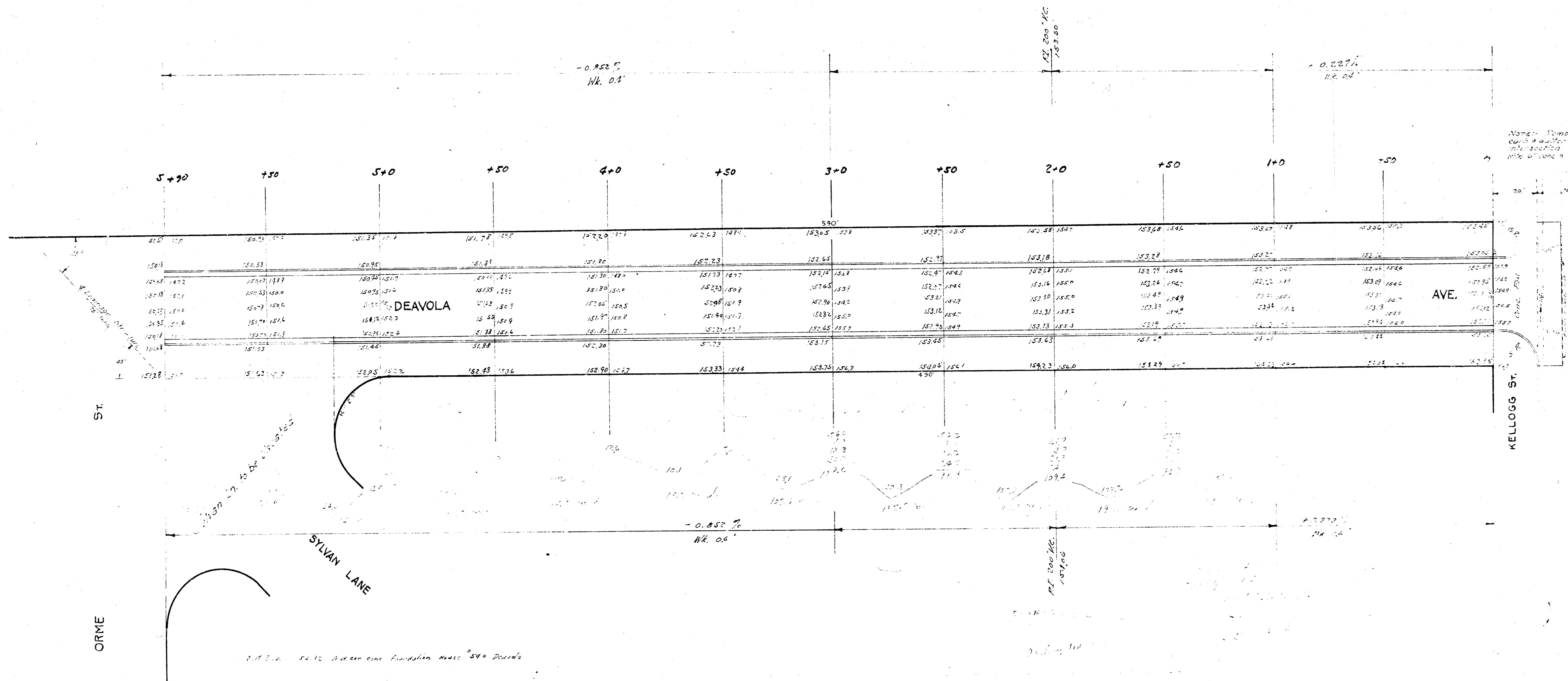
B.M. 152.97 N.W. Cor. of 1st step of Ho. #642 S. Deavola

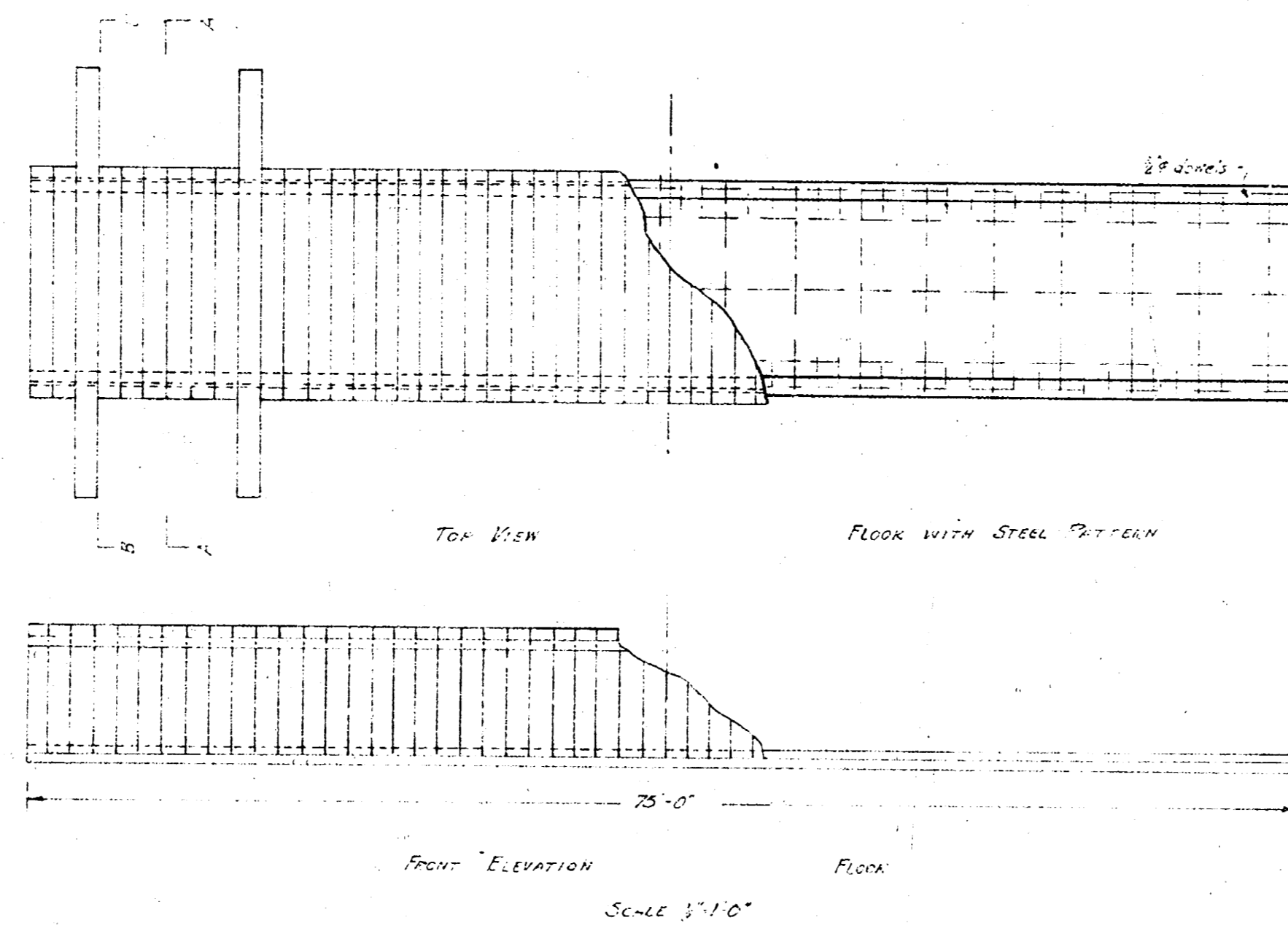
STY
 44.4
 33.9
 28.5
 21.1
 18.9
 17.2
 18.5
 21.1
 25.4
 29.1
 19.0
 278.4
 +10.26
 328.2 cu yds.



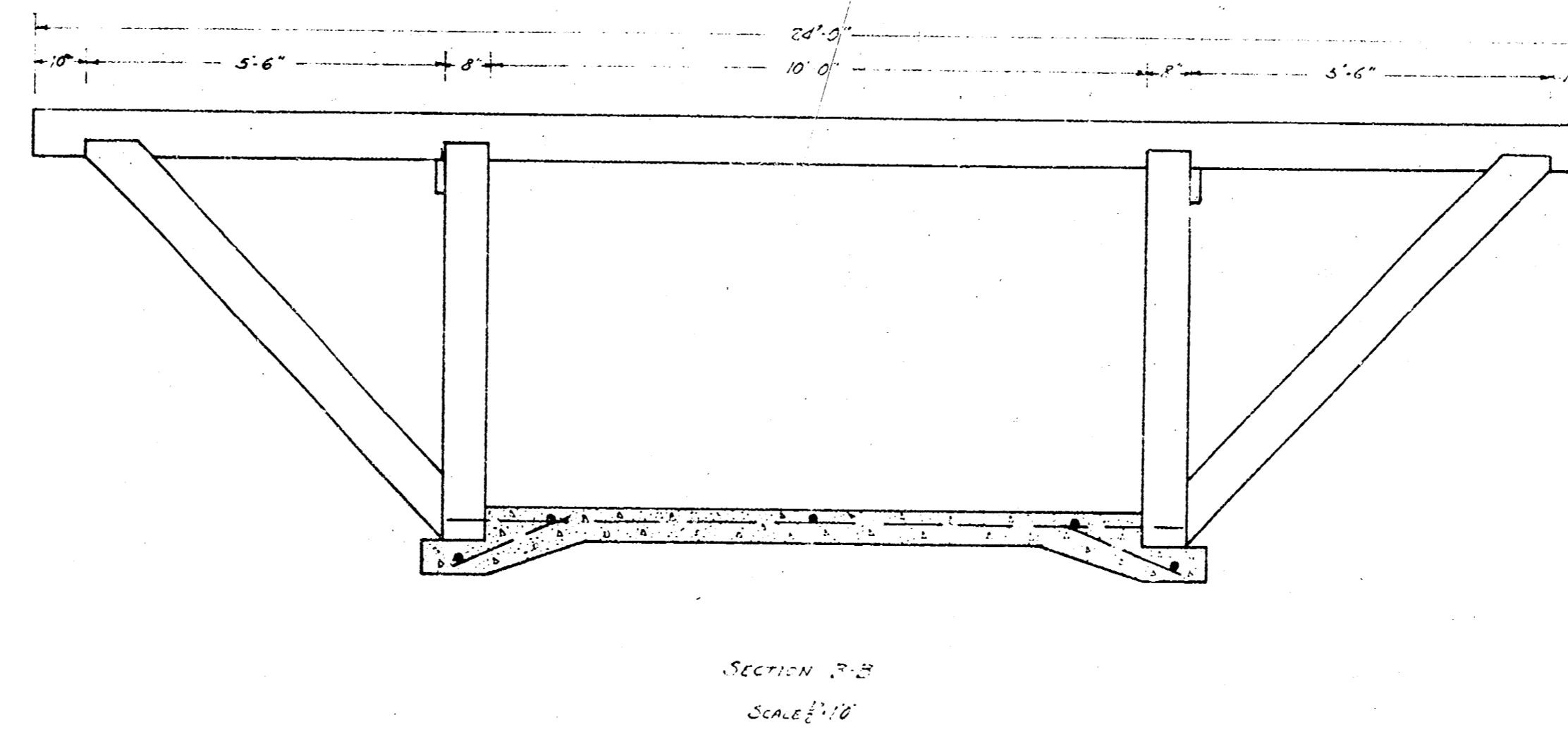
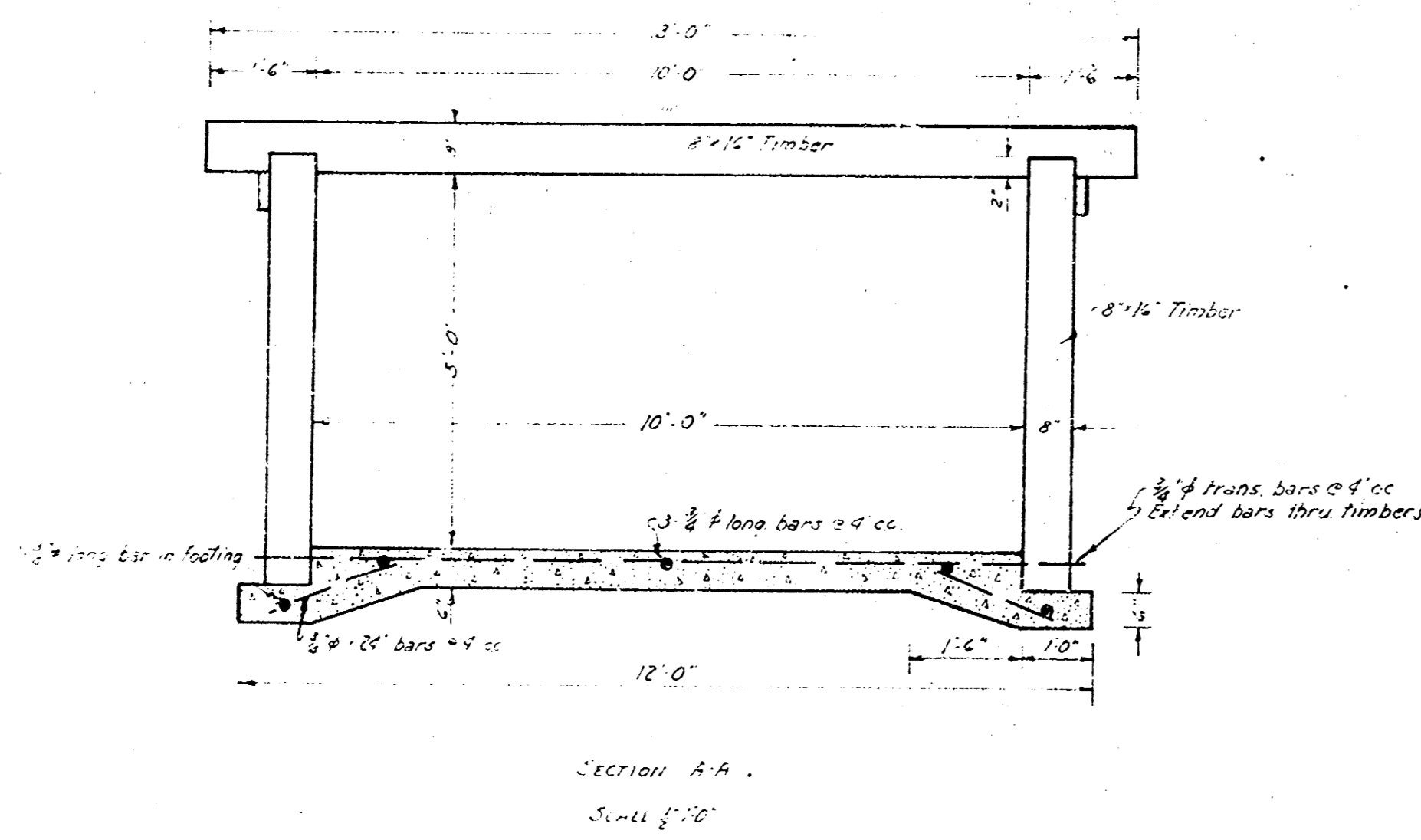
Deavola Ave.
 N.L. Orme — S.L. Kellogg
 26' Conc. # 28' Conc. # Cb.
 City of Wichita, Kansas
 L.K. White City Engineer
 September 1948 Project 018-129

1942
 DEAVOLA AVE — S.L. KELLOGG TO N.L. ORME
 Cb. & GTR.





NOTE: All timbers are salvaged bridge timbers



DETAILS OF COLVERT TO BE CONSTRUCTED
AT THE INTERSECTION OF DEAVOLA & ORME
MICHIGAN, KANSAS

Note To CONTRACTOR:
Bids are to be taken on excavation and
concrete base only. The walls and top are
to be constructed with salvaged bridge
timbers by force account.