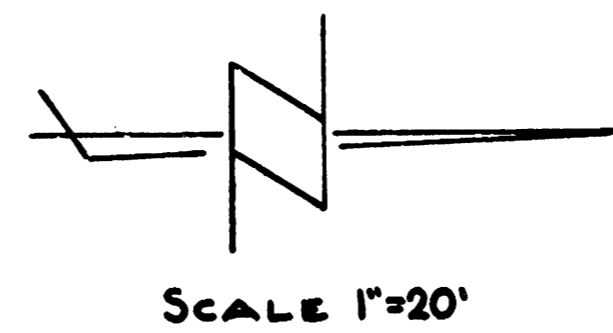
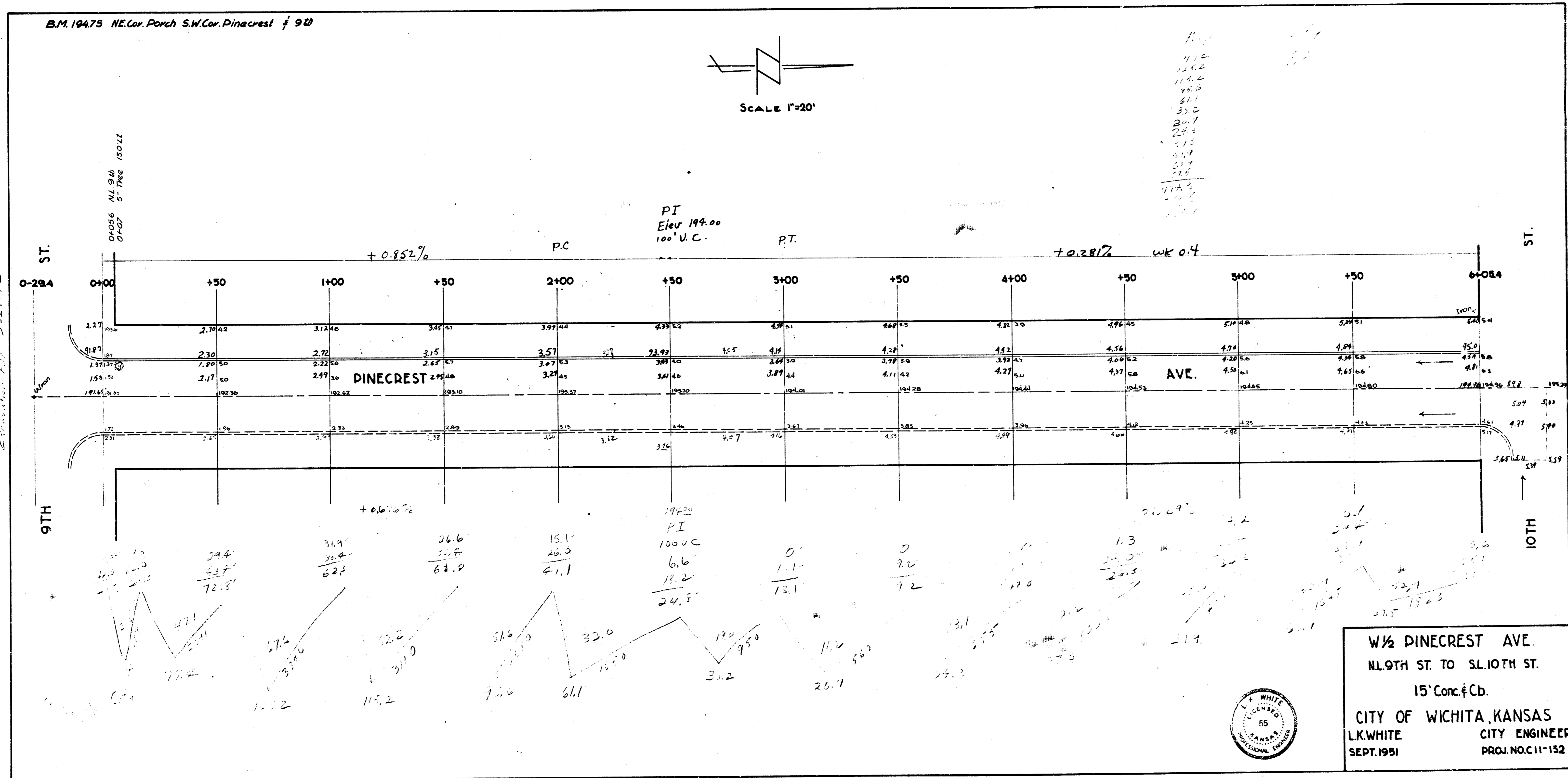


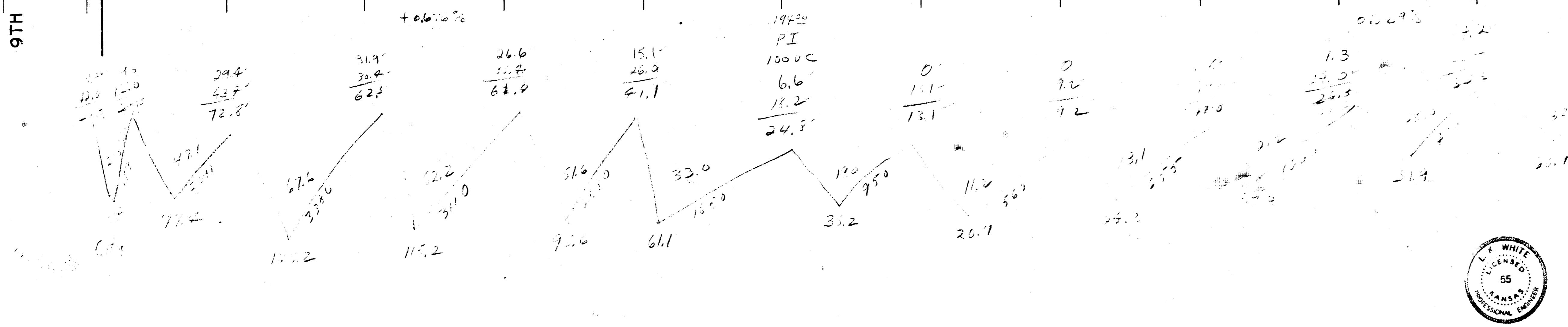
B.M. 19475 NE. Cor. Poreh S.W. Cor. Pinecrest # 910



Handwritten notes: 11.2, 12.2, 13.2, 14.2, 15.2, 16.2, 17.2, 18.2, 19.2, 20.2, 21.2, 22.2, 23.2, 24.2, 25.2, 26.2, 27.2, 28.2, 29.2, 30.2, 31.2, 32.2, 33.2, 34.2, 35.2, 36.2, 37.2, 38.2, 39.2, 40.2, 41.2, 42.2, 43.2, 44.2, 45.2, 46.2, 47.2, 48.2, 49.2, 50.2, 51.2, 52.2, 53.2, 54.2, 55.2, 56.2, 57.2, 58.2, 59.2, 60.2, 61.2, 62.2, 63.2, 64.2, 65.2, 66.2, 67.2, 68.2, 69.2, 70.2, 71.2, 72.2, 73.2, 74.2, 75.2, 76.2, 77.2, 78.2, 79.2, 80.2, 81.2, 82.2, 83.2, 84.2, 85.2, 86.2, 87.2, 88.2, 89.2, 90.2, 91.2, 92.2, 93.2, 94.2, 95.2, 96.2, 97.2, 98.2, 99.2, 100.2



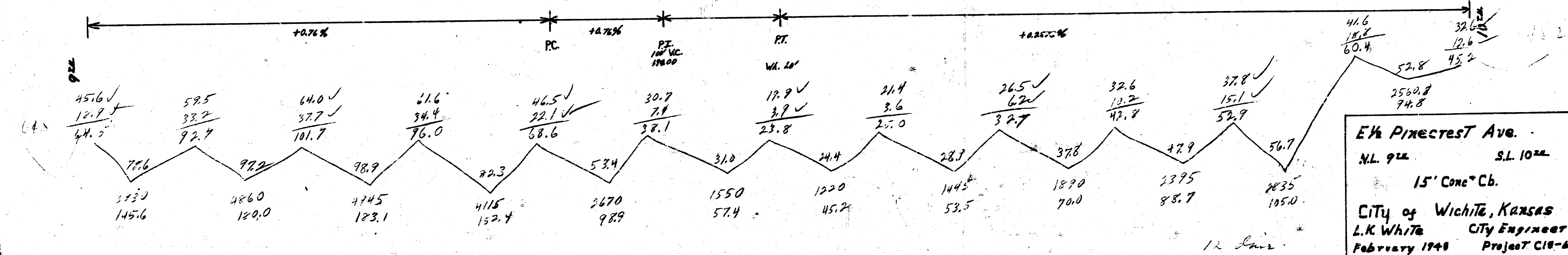
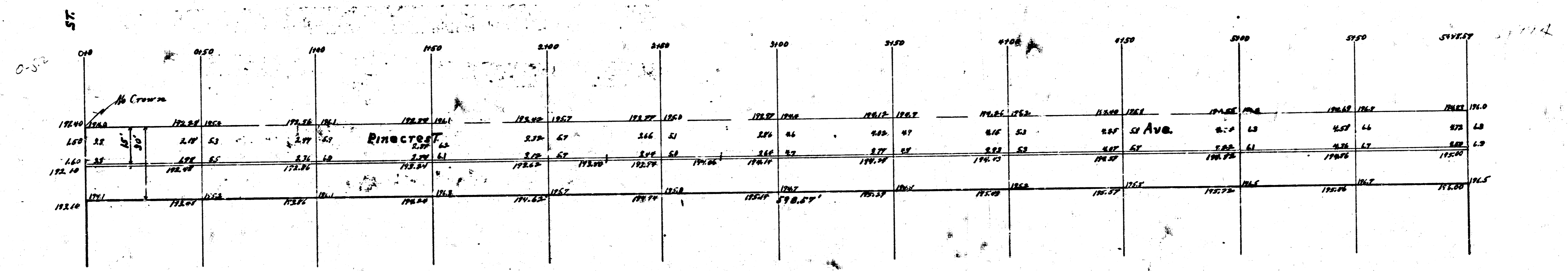
Vertical handwritten notes: 15.1, 14.2, 13.2, 12.2, 11.2, 10.2, 9.2, 8.2, 7.2, 6.2, 5.2, 4.2, 3.2, 2.2, 1.2, 0.2



W 1/2 PINECREST AVE.
N. L. 9TH ST. TO S. L. 10TH ST.
15' Conc. & Cb.
CITY OF WICHITA, KANSAS
L. K. WHITE CITY ENGINEER
SEPT. 1951 PROJ. NO. C 11-152

B.M. 194.75 NE. Cor. Patch Sid. On Pincrest * 922
 B.M. 196.00 Conc. Base S.S. Patch 5' W. E. Pincrest * E. 1022

Property
 145.6
 189.9
 183.1
 152.4
 58.9
 57.4
 45.2
 33.5
 20.0
 88.8
 105.0
 24.8
 1274.6
 710.6
 1402.1 C.M.



E 1/2 Pincrest Ave.
 N.L. 922 S.L. 1022
 15' Conc. Cb.
 City of Wichita, Kansas
 L.K. White City Engineer
 February 1948 Project C18-6