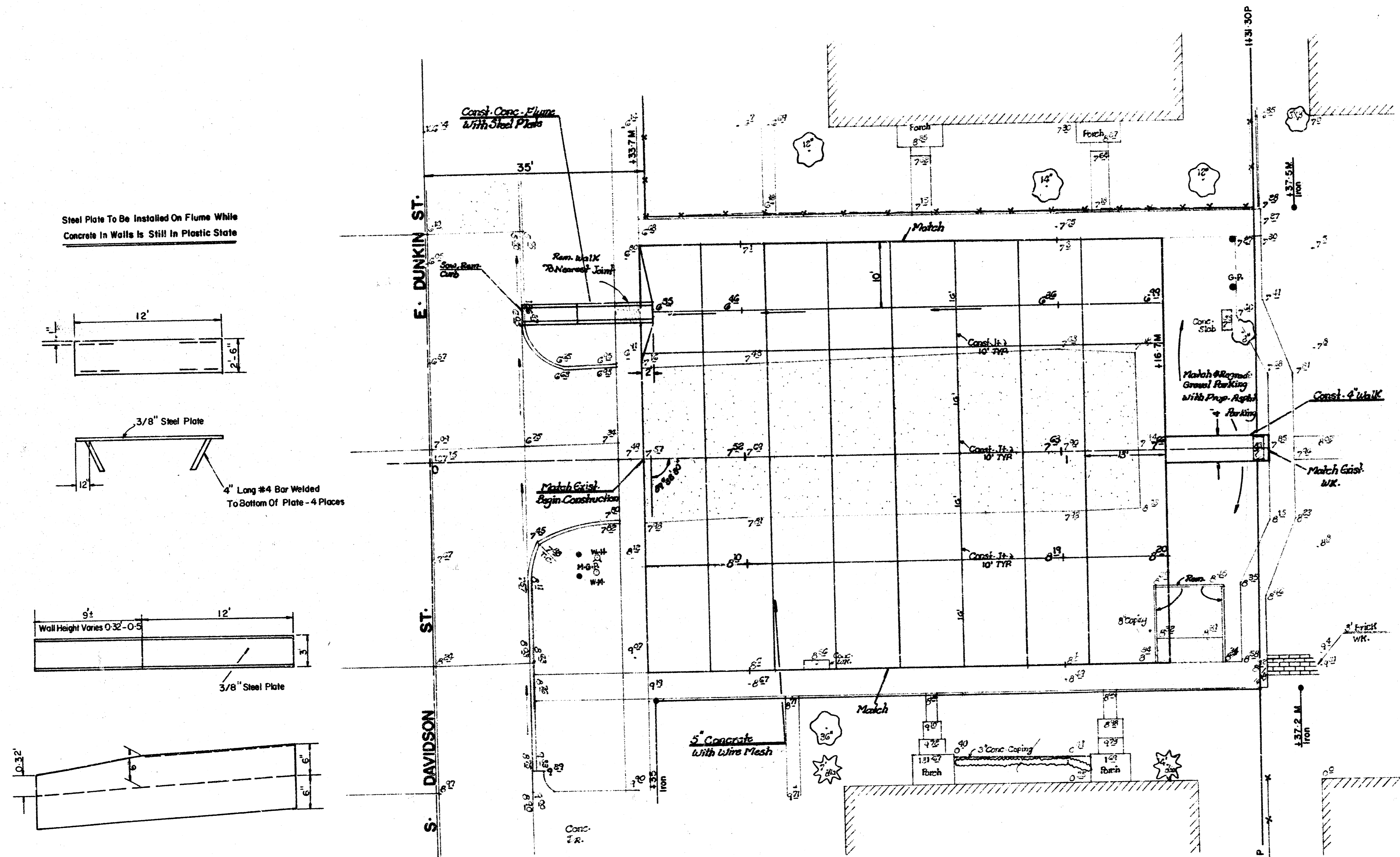
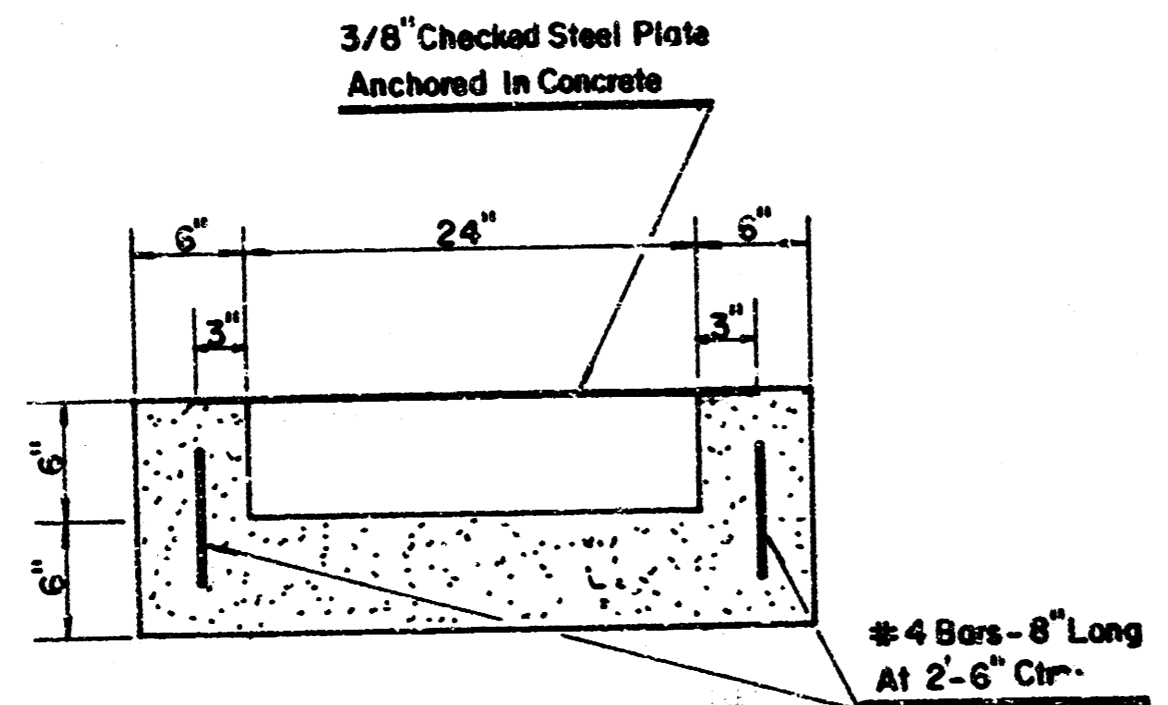
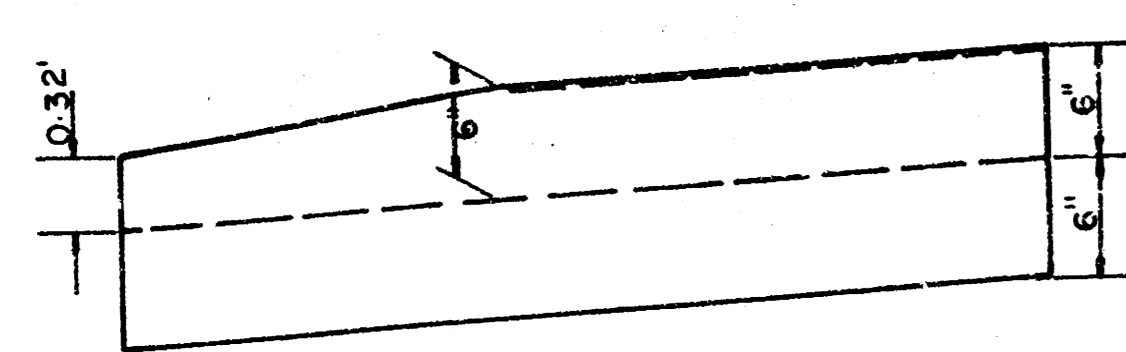
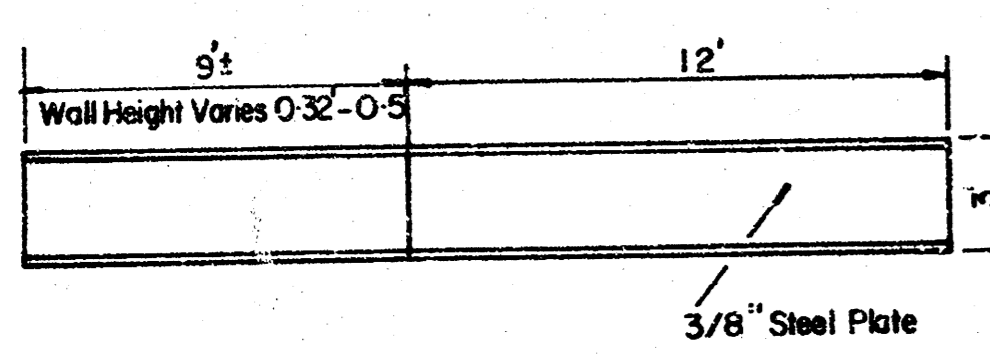
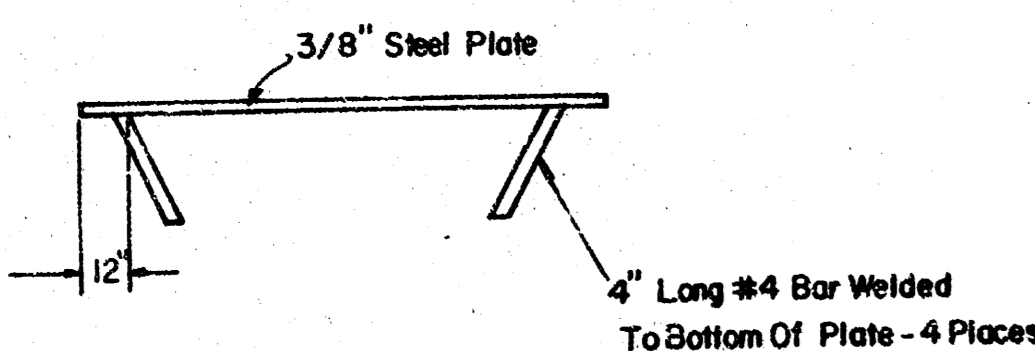
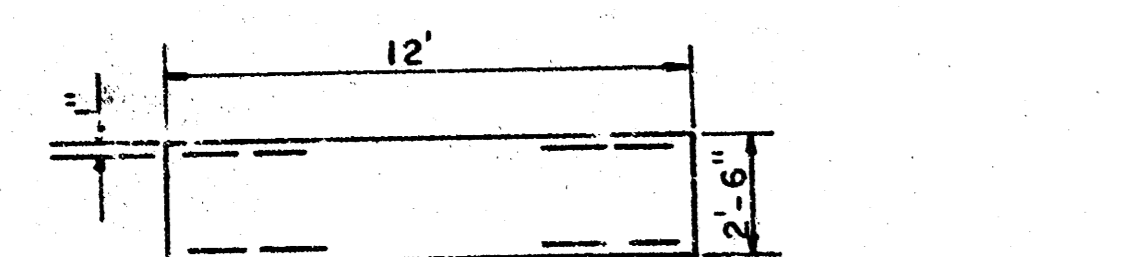


B.M. = 13014 "M" in Muller of Water Hydrant At S-E Cor Davidson ST. & S. Davidson ST.

B.M. = 162373 Davidson & 31st ST-S City STD: 26.7' W. & 52' N-C.L. Both

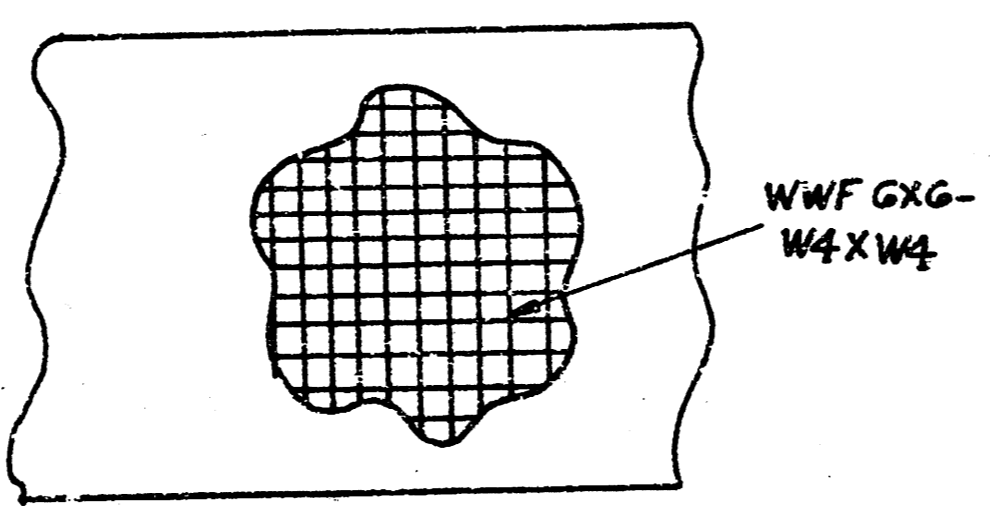


Steel Plate To Be Installed On Flume While Concrete in Walls is Still in Plastic State

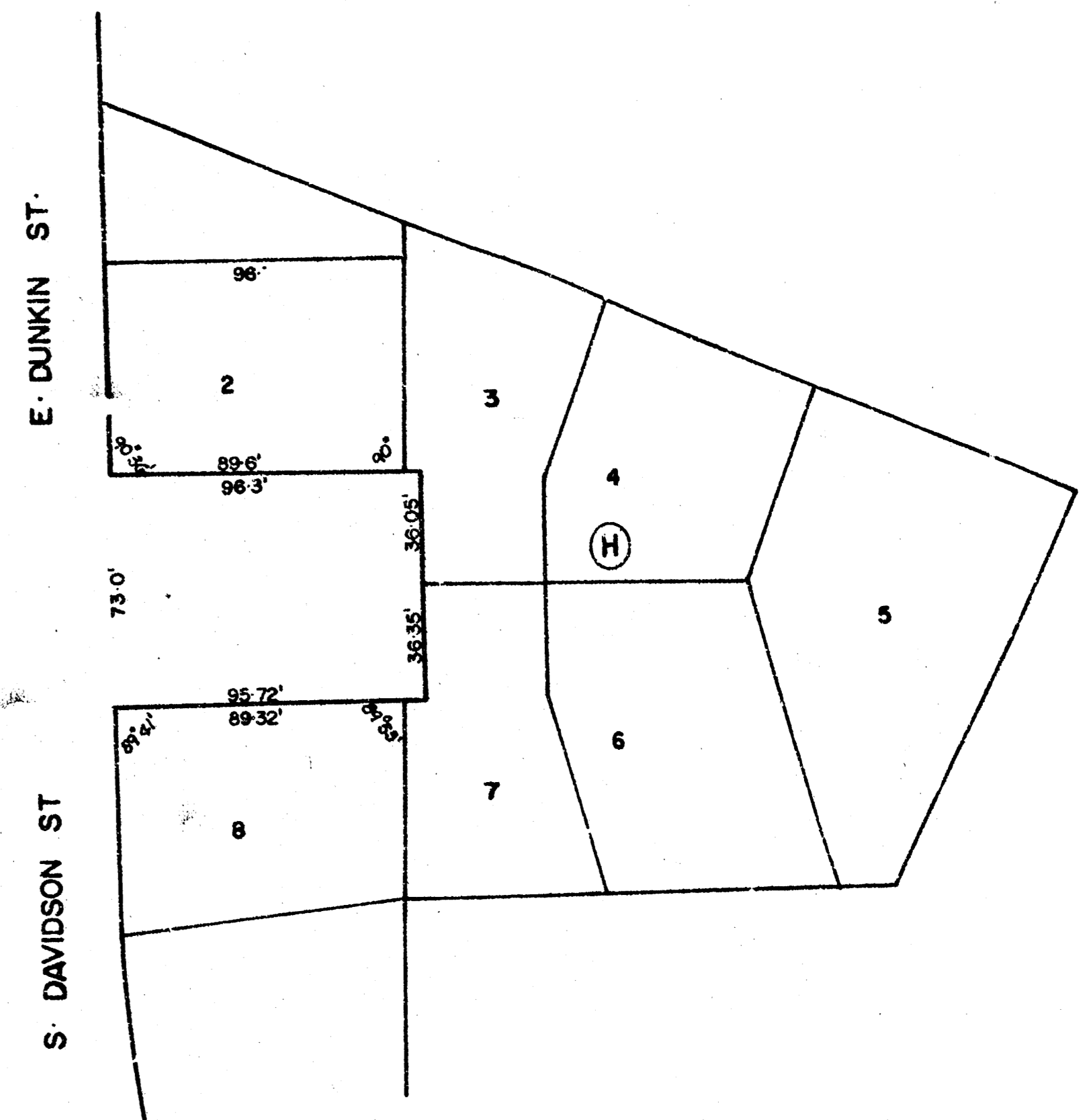


Concrete Flume Detail (Full Section)

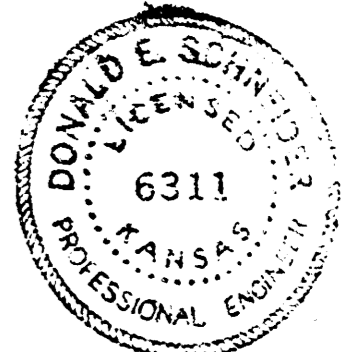
NOTE: PARKING PAVEMENT SHALL BE 5" THICKNESS WITH WIREMESH APPROXIMATE WEIGHT OF WELDED WIREMESH = 58 POUND PER 100 SQUARE FEET.



- GENERAL NOTES**
1. TO COORDINATE INSTALLATION OF STALL LINES, PAVEMENT CONTRACTOR SHALL NOTIFY TRAFFIC ENGINEERING, DEPARTMENT OF OPERATIONS AND MAINTENANCE, 268-4129.
 2. COST OF REGRADING OF PARKING IS INCIDENTAL TO THIS PROJECT.
 3. REMOVAL ITEMS SHOWN AS:

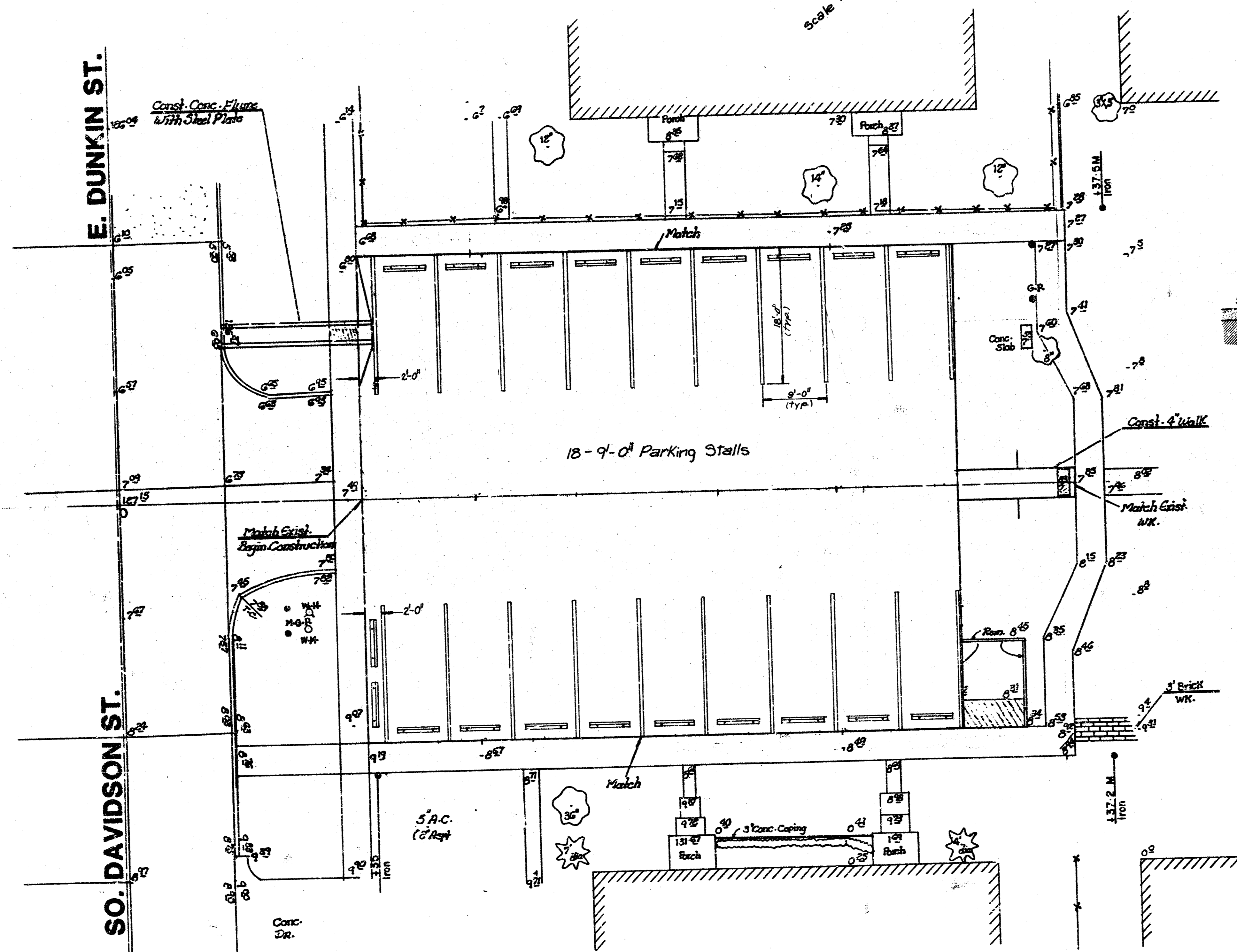


THE CONTRACTOR SHALL BE RESPONSIBLE FOR PRESERVING PROPERTY IRONS. THE CONTRACTOR SHALL BE REQUIRED TO RE-ESTABLISH ANY PROPERTY IRONS WHICH ARE DAMAGED OR DESTROYED BY HIS CONSTRUCTION OPERATIONS. SUCH IRONS SHALL BE RE-ESTABLISHED BY A LICENSED LAND SURVEYOR OR A LICENSED PROFESSIONAL ENGINEER IN ACCORDANCE WITH STATE LAWS.

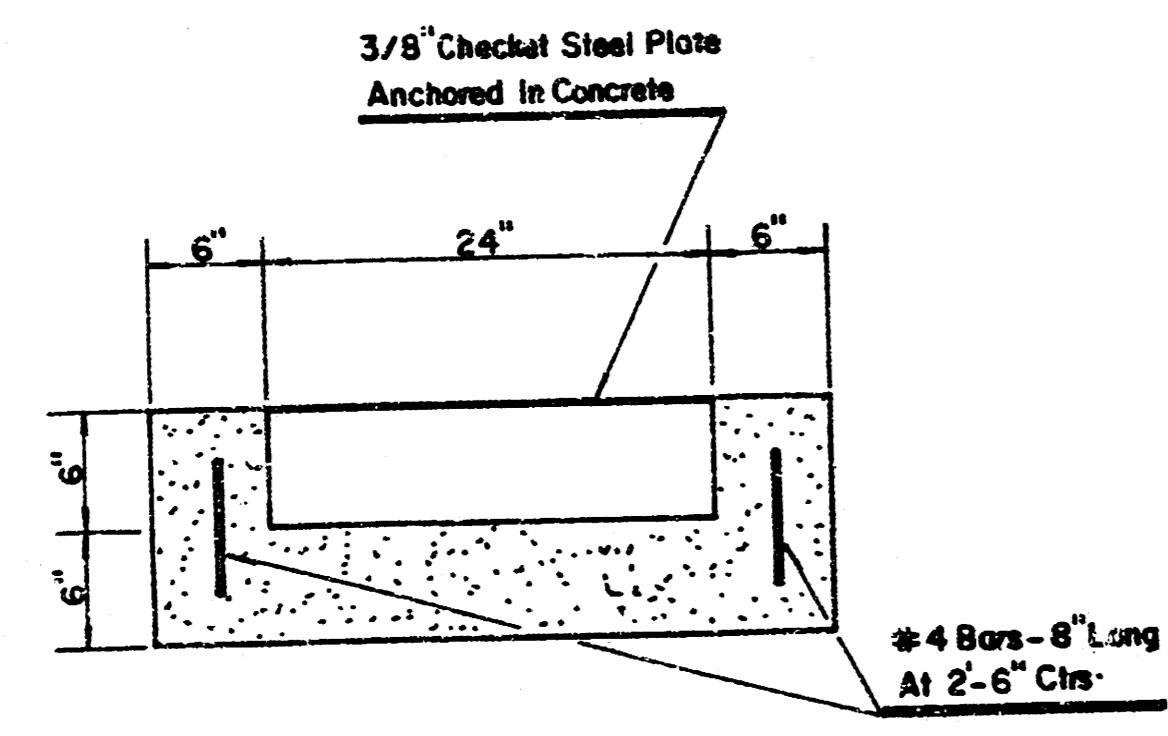
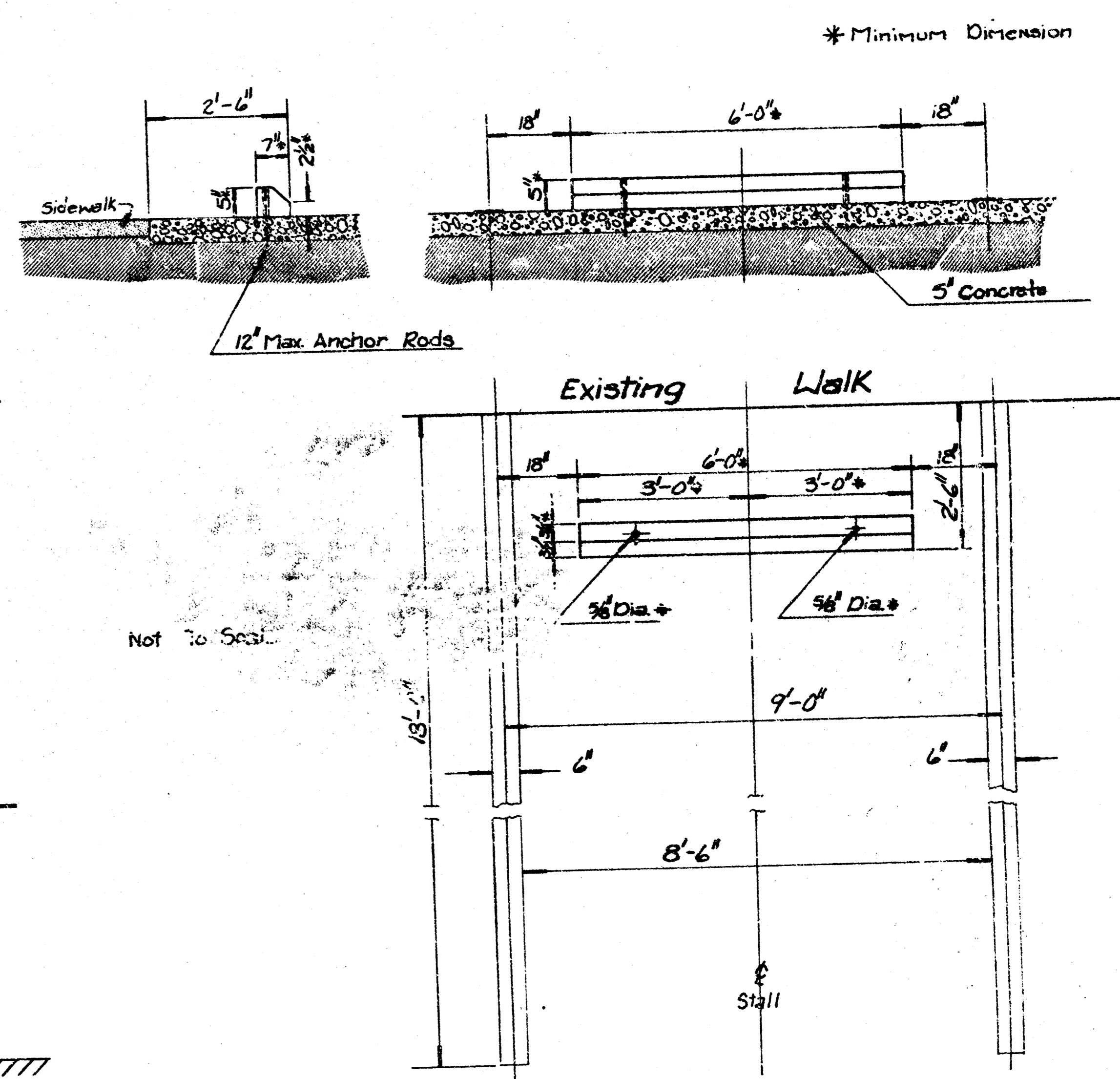


PROJECT DESCRIPTION		
PLANEVIEW PARKING COURT		
Serves Lots 2-8 Blk. H, Planeview Sub-No 2 (Davidson & Dunkin Streets)		
PROJECT NUMBER		
472-76-245-81205-000-000-001		
BOOK NO. BR-93	APPROVED BY	DATE
DRAWN BY	REVISION	
CITY OF WICHITA		
DEPARTMENT OF ENGINEERING		
DIRECTOR OF ENG./CITY ENGINEER		SCALE
R. W. BRUGGEMAN		1" = 10'

The Contractor Shall Install Twenty Precast Concrete Bumper Blocks as Shown. The Bumper Blocks Shall be six-foot in Length, Seven to Eight inches Wide at the Base, Approximately Three inches Wide at the Top, and Five to Six inches in Overall Height, with a Sloping Taper from about Center Height to the Top. Concrete Strength to Manufacture Shall be Designed for a Compressive Strength with Exceed 3000 psi, and Units to be Reinforced Full Length with One or More Steel Reinforcing Rods. The Finish Shall be Smooth, and Off-White in Color. Each Bumper Block Shall have a Hole for Steel Anchor Pins Located near each End, of 5/8" or 3/4" Diameter. Steel Drive Pins or Anchor Rods, Shall not Exceed Twelve inches in Length to Reduce Chipping & Cracking.



BUMPER BLOCK DETAIL

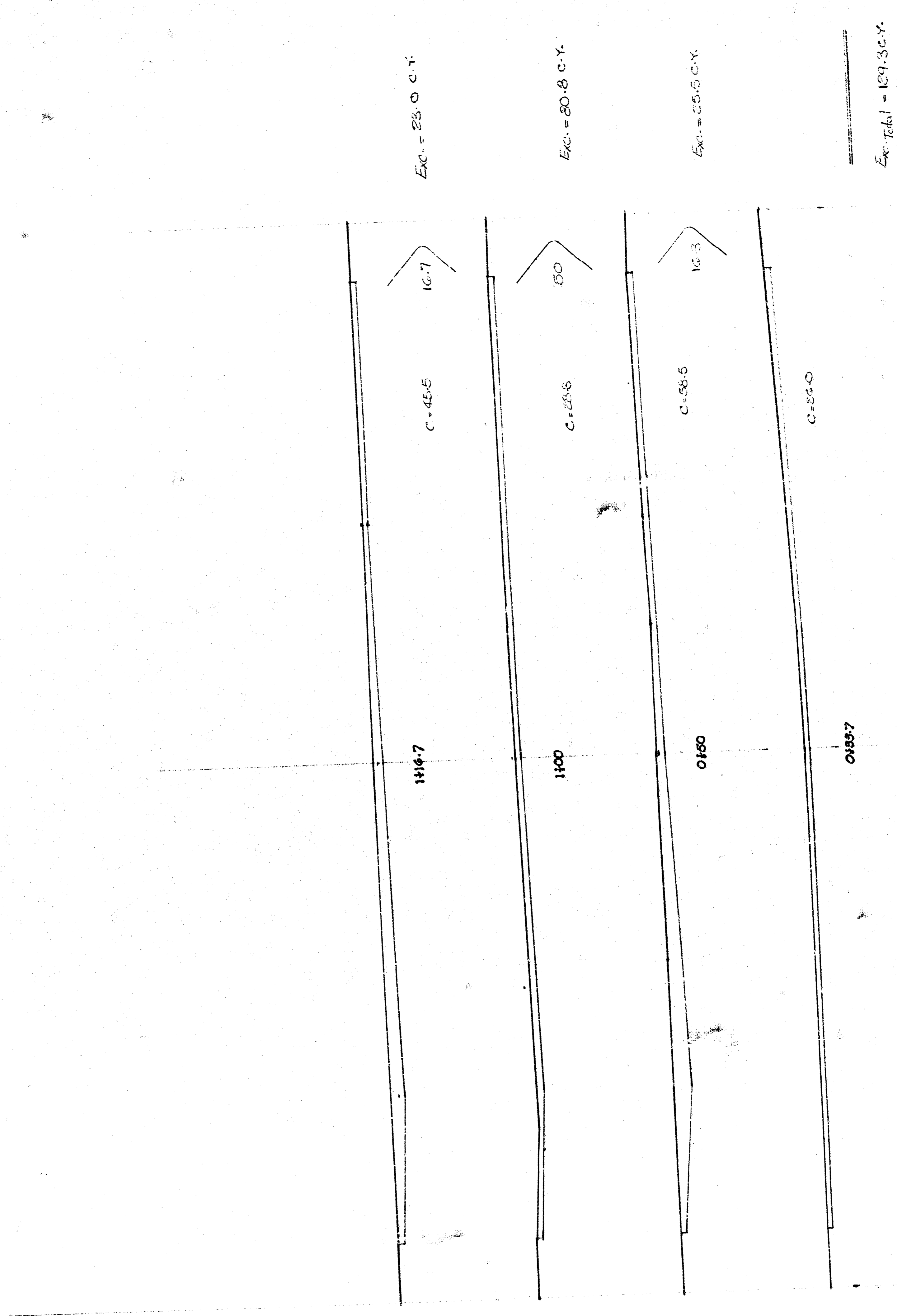


PROJECT DESCRIPTION		
PLANEVIEW PARKING COURT		
PARKING PLAN		
PROJECT NUMBER		
472-76-245-81205-000-000-001		
BOOK NO.	APPROVED BY	DATE Aug. 1982
DRAWN BY A.R.E.	REVISION	
CITY OF WICHITA		
DEPARTMENT OF ENGINEERING		
DIRECTOR OF ENCL. CITY ENGINEER		
R. W. BRUGGEMAN		
SCALE		1" = 10'

05 4 3 50

3/8

130 125 130 125 130 125 130 125



3/3

EXEMPT FROM THE REST