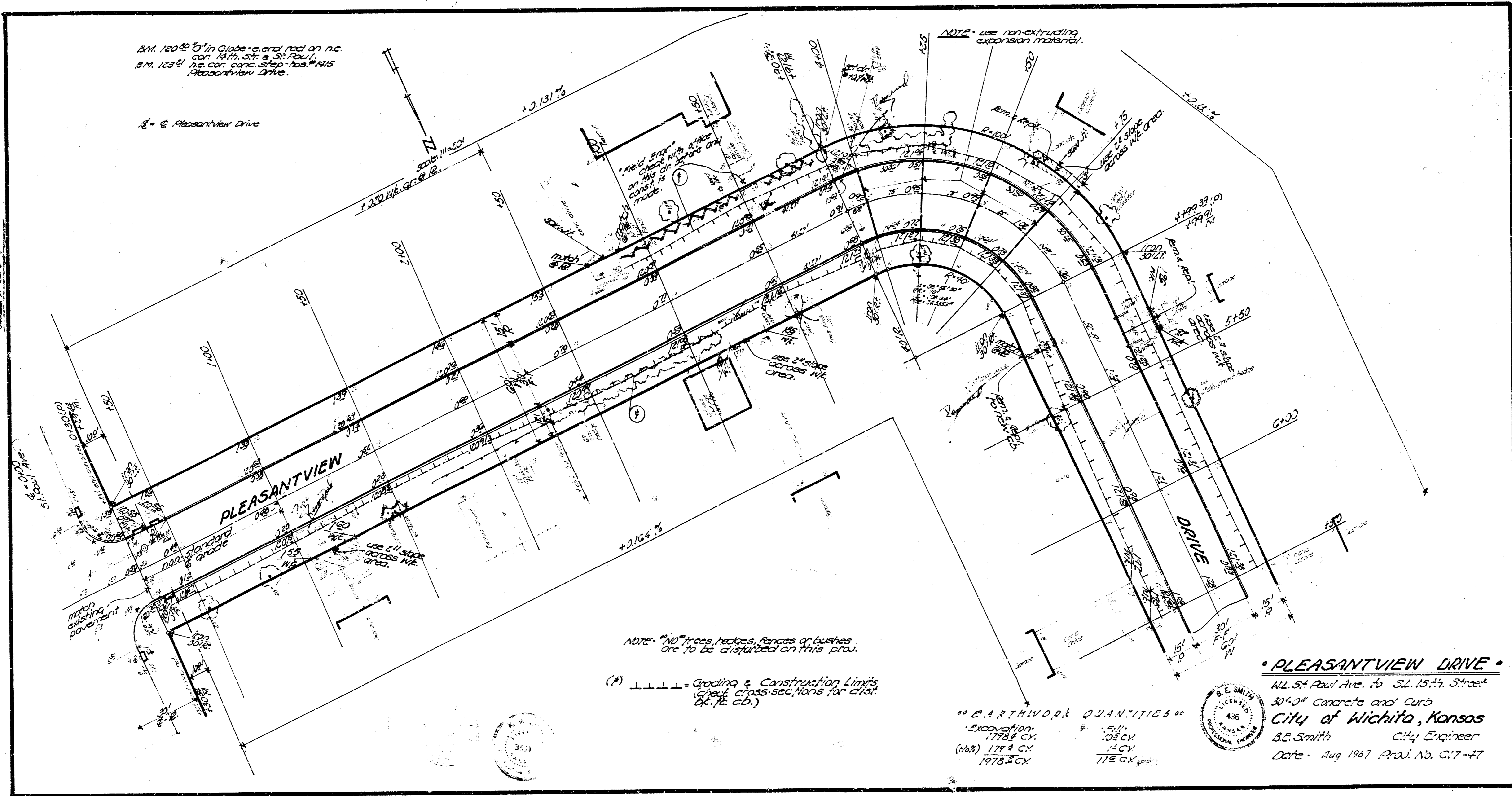


Summary Sheet
 Plan Sheet
 Checked



B.M. 120 in Globe - end rod on n.e. cor. 14th St. & St. Paul
 B.M. 123 in car concrete base - 14th Pleasantview Drive.

E. of Pleasantview Drive

NOTE - use non-expanding expansion material.

NOTE - No trees, hedges, fences or bushes are to be disturbed on this proj.

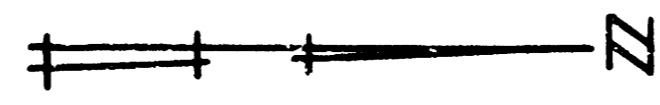
(*) - - - - - Grading & Construction Limits (see cross-sections for dist. & c.b.)

00 EARTHWORK QUANTITIES 00

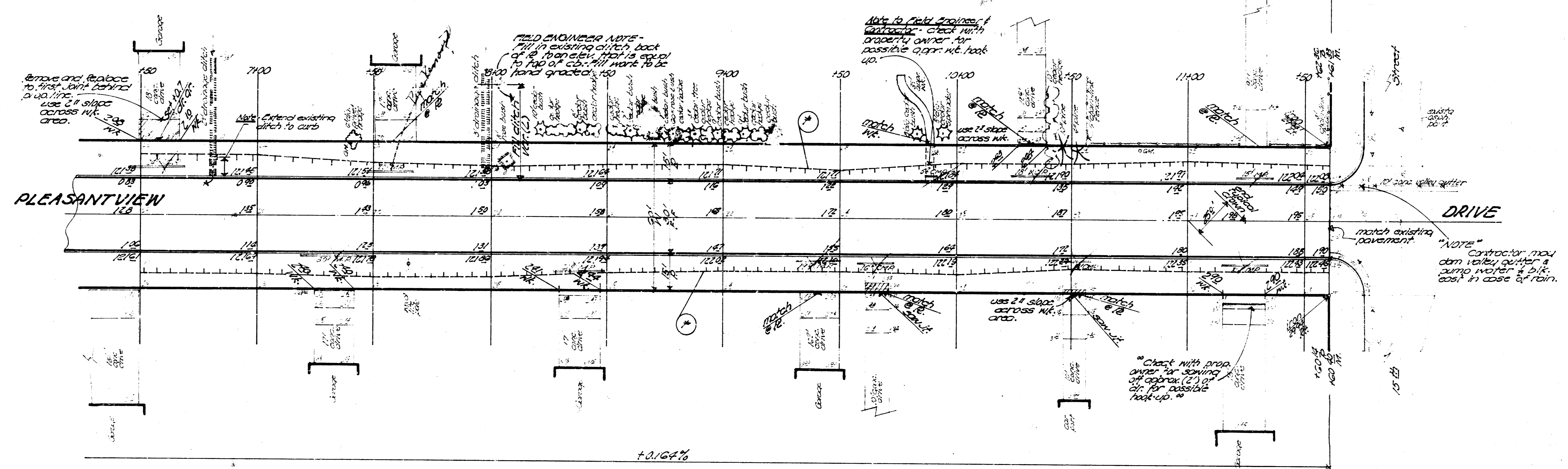
Excavation	1778.5 CY	Fill	105 CY
(Net)	1778.5 CY	Net	115 CY
	1978.5 CY		778.5 CY



• PLEASANTVIEW DRIVE •
 All St. Paul Ave. to S.L. 15th Street
 30" Concrete and Curb
 City of Wichita, Kansas
 B.E. Smith City Engineer
 Date - Aug 1967 Proj. No. C17-47



BY 12x12" x 1/2" top 3" cb. 15" h. 5" x 10" E
of 22. Pleasant View Drive.
+0.131%



NOTE - 10" trees, hedges, fences, or bushes
are to be disturbed this proj.

(*) - - - - - grading and construction limits.
(check cross sections for color.
see 16 cb.)

PLEASANT VIEW DRIVE
N.E. 31st St. to S.E. 31st St.
S17-27