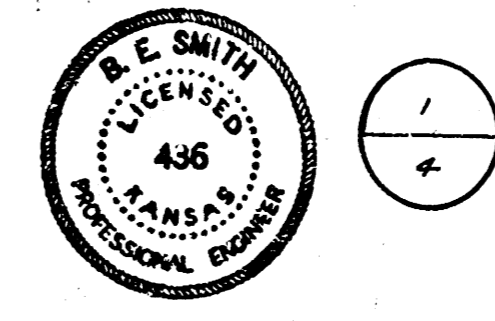
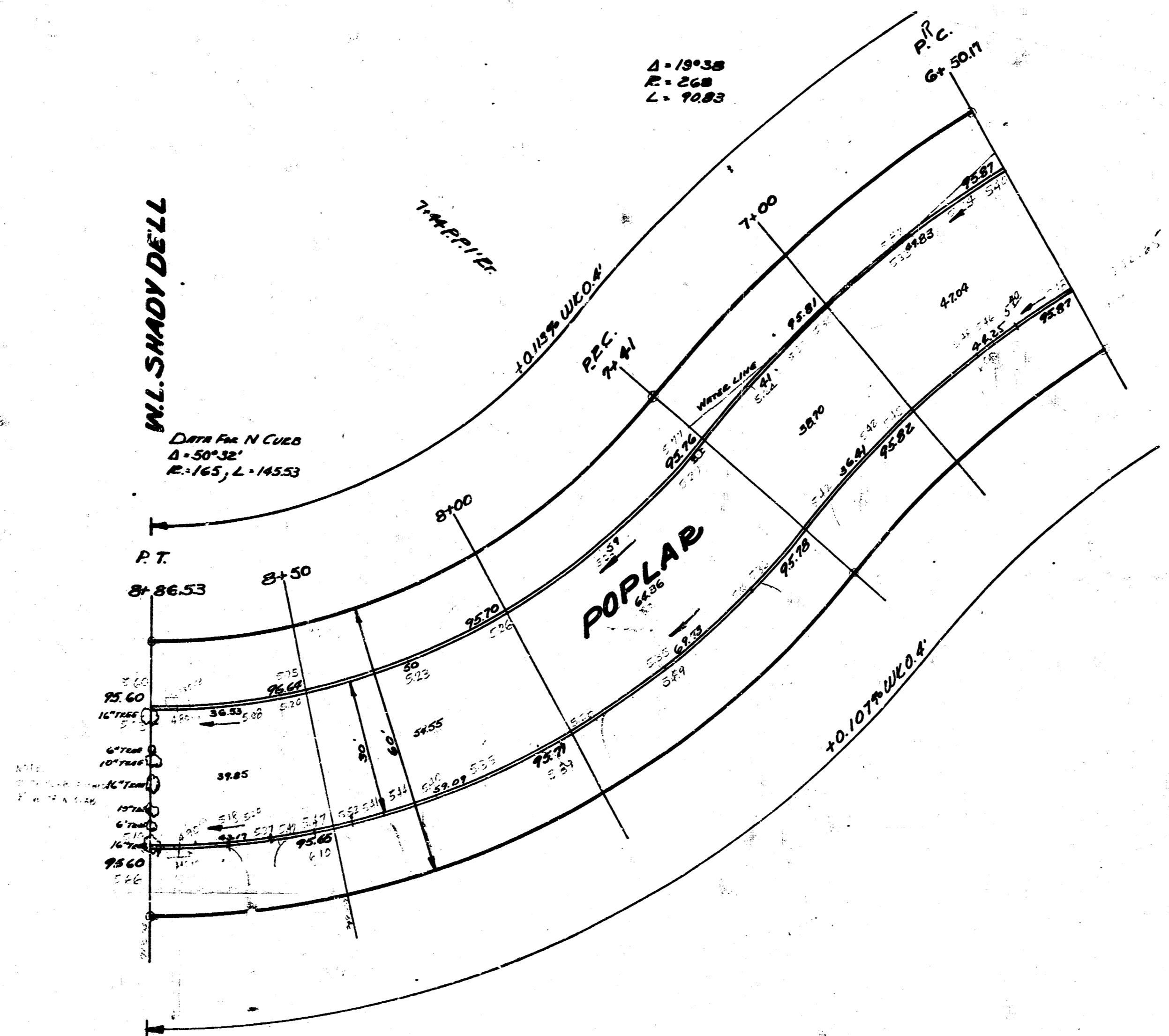


B.M. 7351 "X" at NE Cor. N. Highway at Dangle R. 1' 40" 1/2" at E. Cor. 25' E. & 60' on Point
 Station on NW Curve

6-1



PROPERTY
 2543.3
 110' 264.0
 2794.5 Cu Yds. Fill



POPLAR DRIVE
 SL. PAVEMENT TO WL SHADY DELL ADDN.
 30' CONC. & CURB
 CITY OF WICHITA
 L.K. WHITE CITY ENGINEER
 SEPT. 1952 PROJ. No. CI-334

