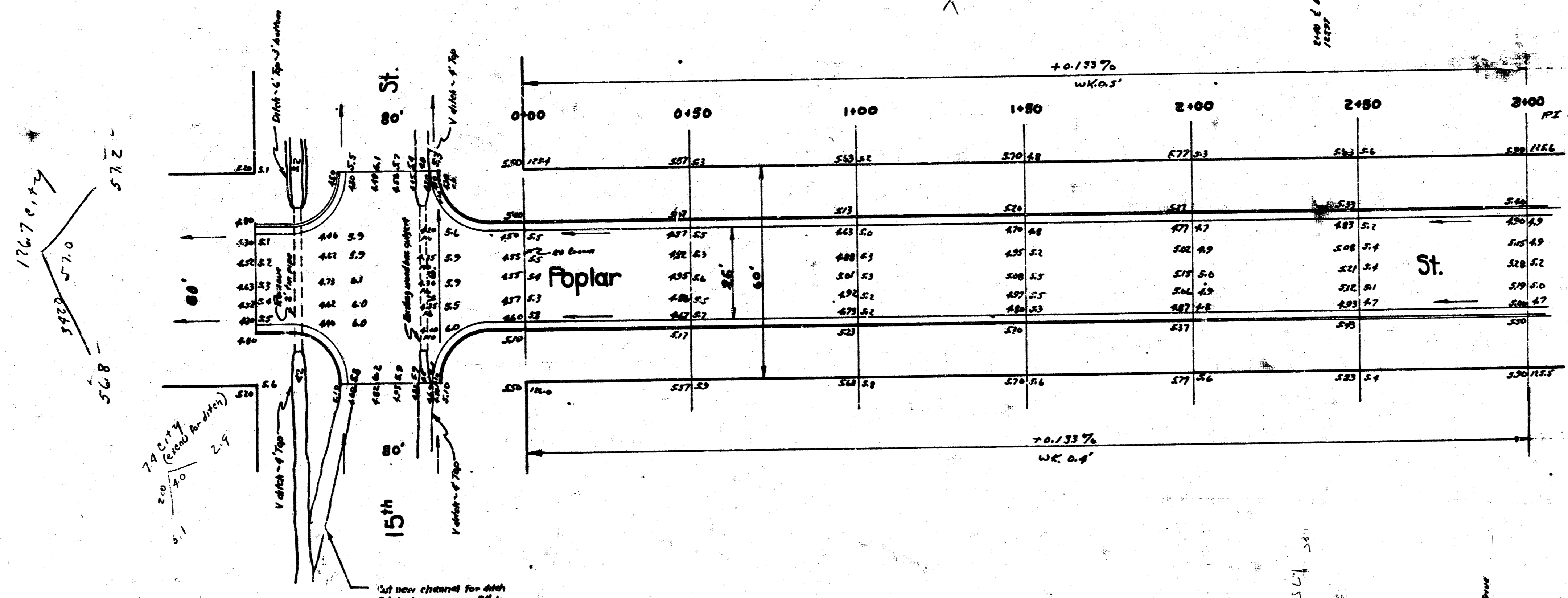
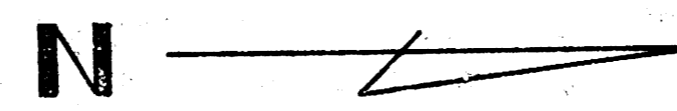


JT 52

B.M. 1264 - SE corner upper conc. stop No. 1555
 B.M. 1235 - P in Right E. curb Poplar, N.L. 16th.

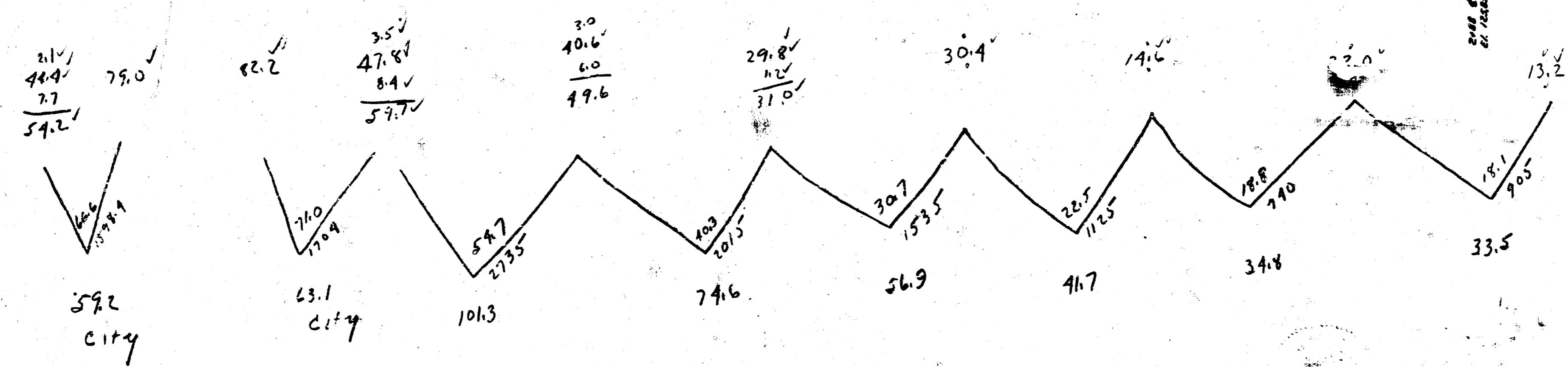
Note: - Make grade to meet all existing drives.



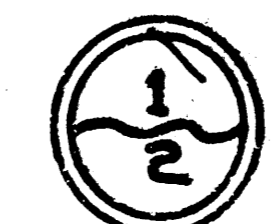
Prop.	City
101.3	116.7
79.6	57.2
56.9	63.1
14.7	27.4
34.8	
33.5	+10%
342.8	282.0 cu yds.
+10%	
377.1 cu yds.	

Grand Total

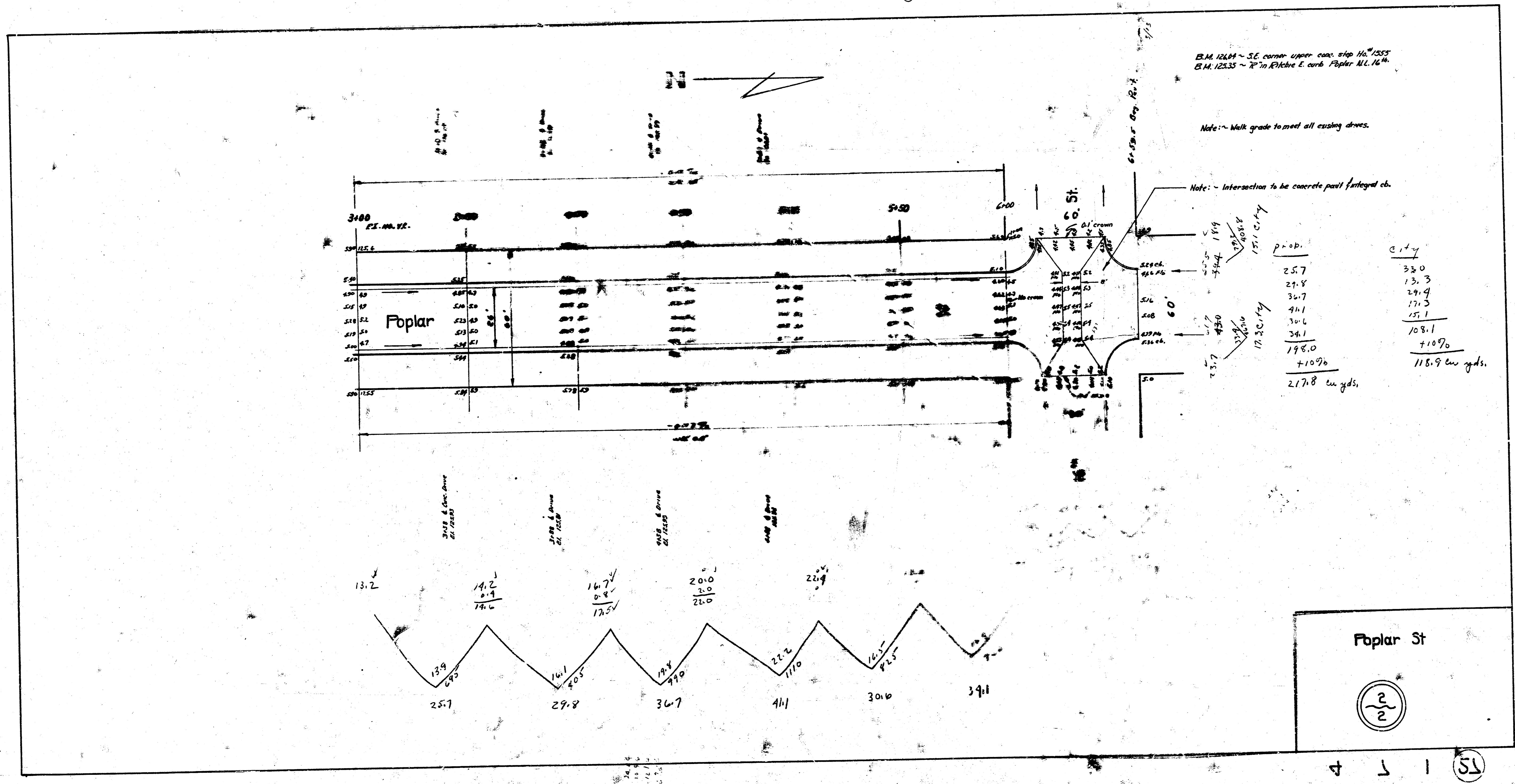
Prop.	City
377.1	282.0
217.8	114.9
594.9 cu yds.	400.9 cu yds.



Poplar St.
 S.L. 15th to N.L. 16th.
 26'-2'-30" A.C.
 City of Wichita, Kansas.
 L. K. White - City Engineer
 October 1930 Proj C10-15



ST 52



B.M. 12604 ~ SE corner upper curb strip No. 1553
 B.M. 12535 ~ P in Pitkin E curb Poplar AL 16th

Note: ~ Walk grade formed all existing drives.

Note: ~ Intersection to be concrete post final grade eb.

Poplar St



4 3 1 (51)