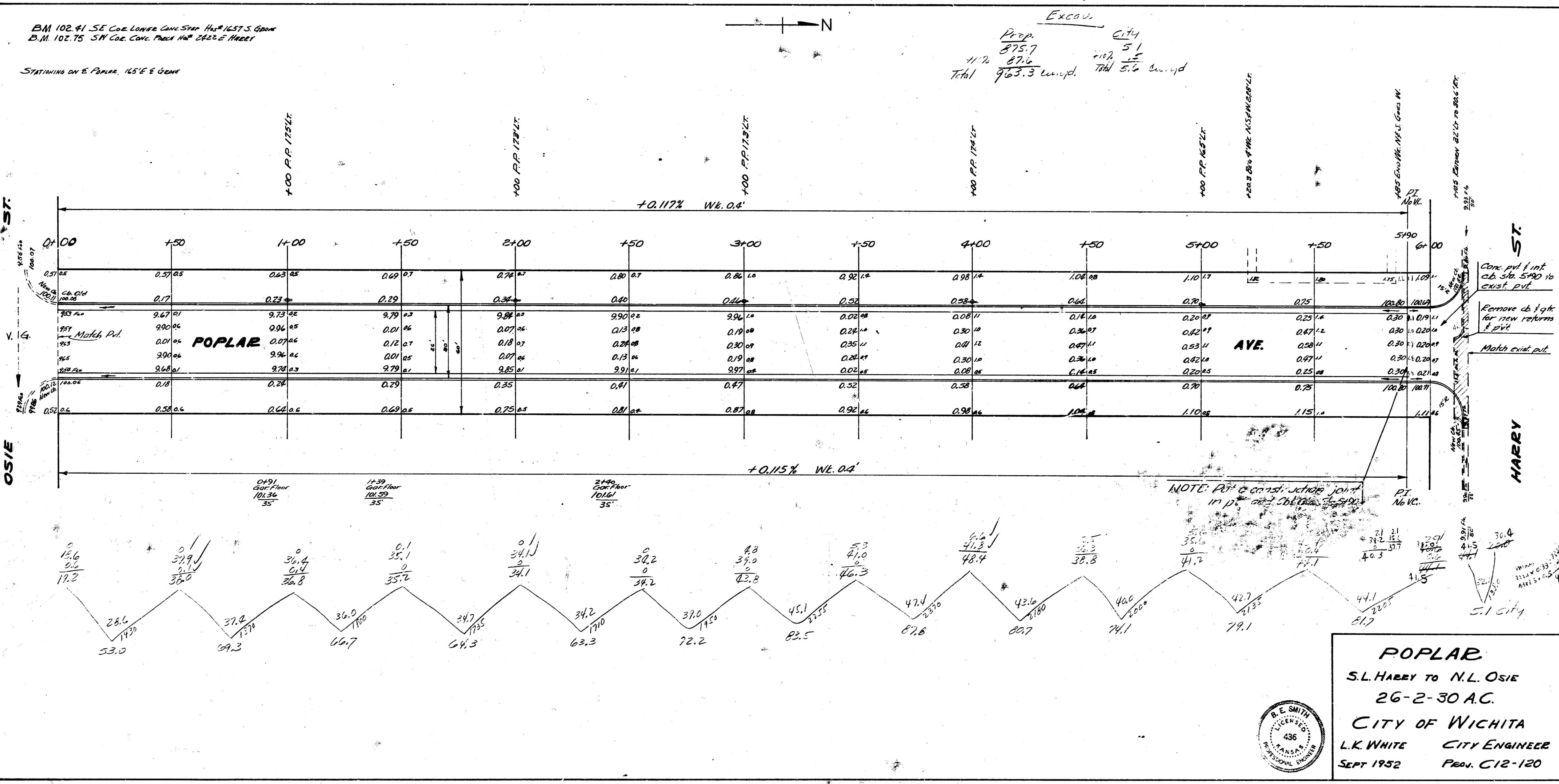


BM 102.91 SE Cor. Lower Curve Sta. H.P. 16 ST. S. 6000  
 B.M. 102.75 SW Cor. Curve, Paved H.P. 16 ST. E. MEET

STATIONING ON E. POPLAR 165' E & 600'

Excav.  
 Prop. 0.74  
 4 1/2 875.7 51  
 Total 963.3 cu yd. 774 5.6 cu yd

Survey Done/ BK 379  
 Plan 02.0  
 Checked JD



**POPLAR**  
 S.L. HARRY TO N.L. OSIE  
 26-2-30 A.C.  
 CITY OF WICHITA  
 L.K. WHITE CITY ENGINEER  
 SEPT 1952 PROJ. C12-120



1 0 0 0