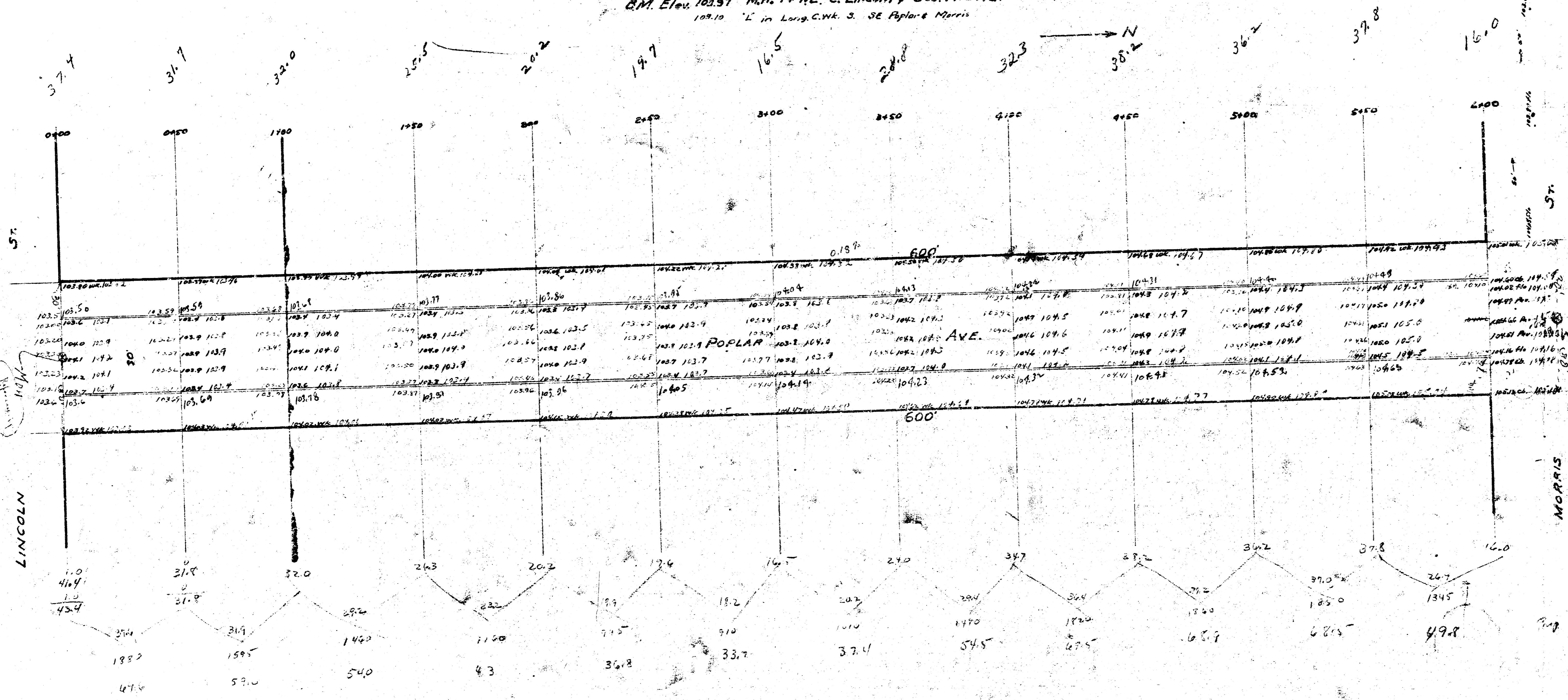


PAVING PLAN POPLAR AVE. S.L. MORRIS TO N.L. LINCOLN 30' CONCRETE INTEGRAL CURB

B.M. Elev. 102.97 N.H. 14' NE. C. Lincoln & Geo. W. Blvd.  
 109.10 'L' in Long. C.W. 3. SE Poplar & Morris



$642.7 + 24.3 = 707.2$