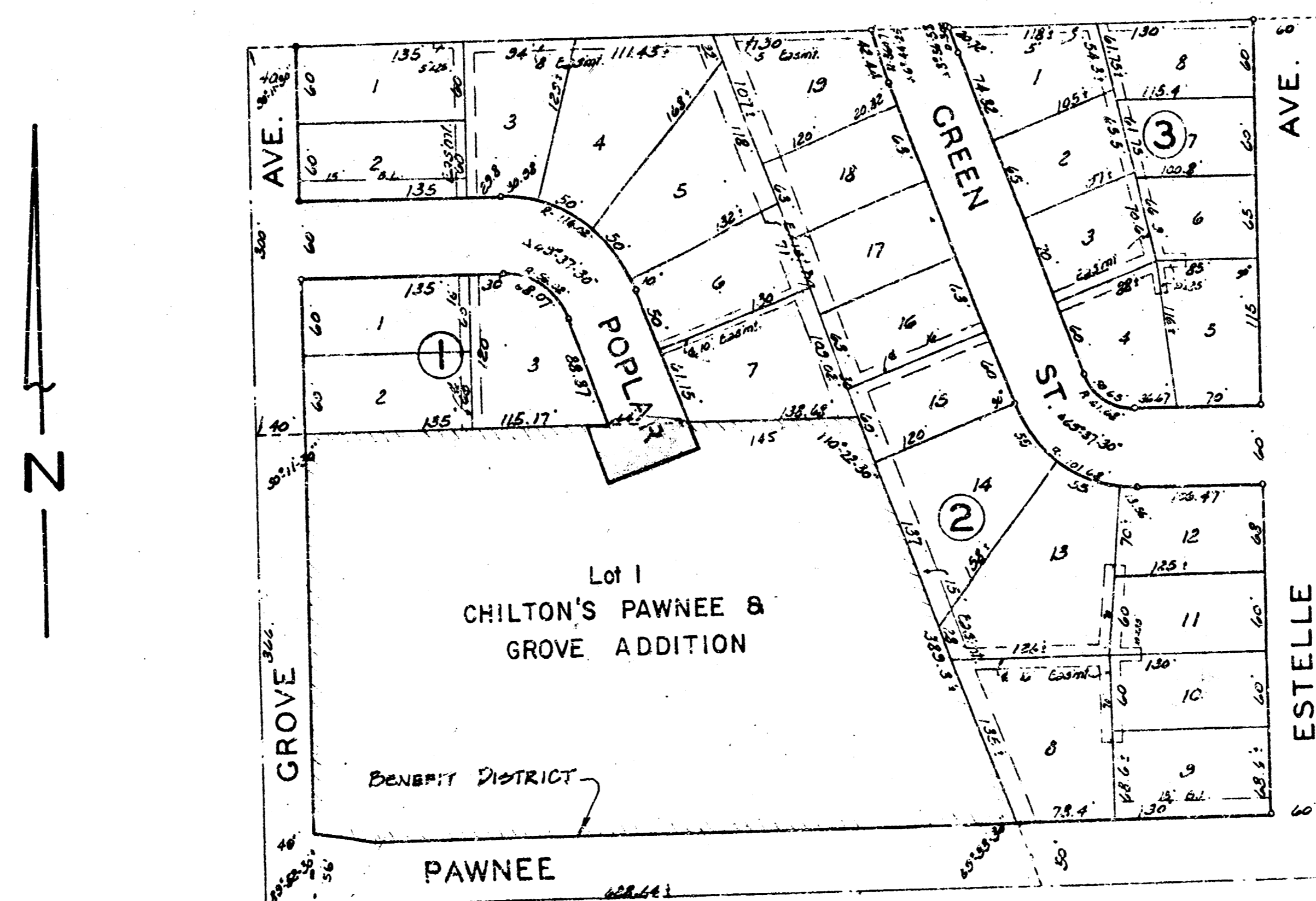


POPLAR CIRCLE

FROM THE NORTH LINE OF CHILTON'S
PAWNEE AND GROVE ADDITION TO
AND INCLUDING CUL-DE-SAC

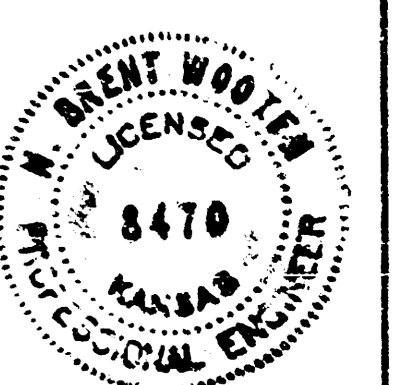
Project no. 472-76-245-80357-000-000-001

CITY OF WICHITA, KANSAS
MICHAEL E. LINDEBAK CITY ENGINEER

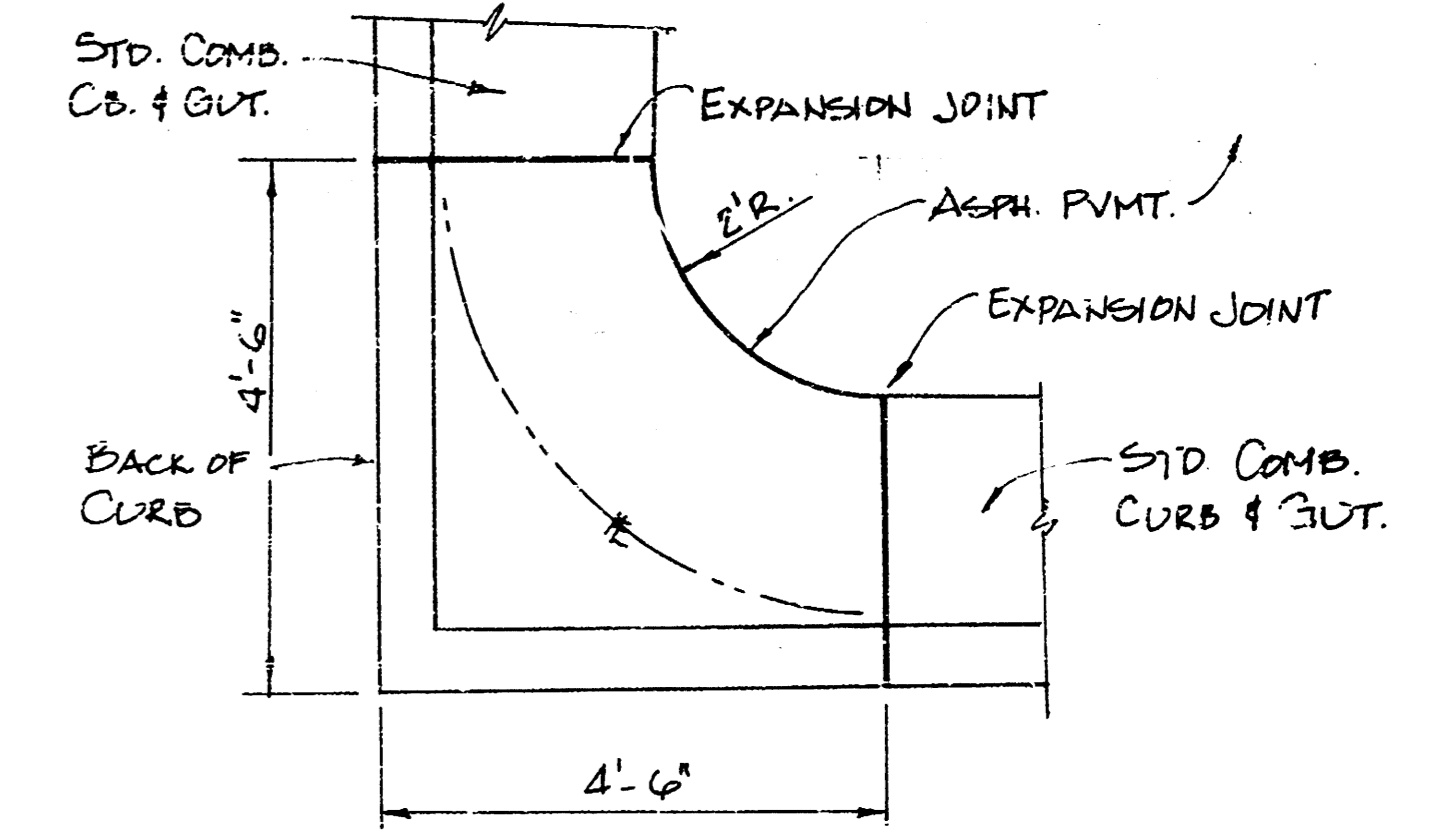


GENERAL NOTE

The Contractor shall be responsible for preserving property irons. The Contractor shall be required to re-establish any property irons which are destroyed or damaged by his construction operations. Such irons shall be re-established by a licensed land surveyor or a professional engineer in accordance with state laws.

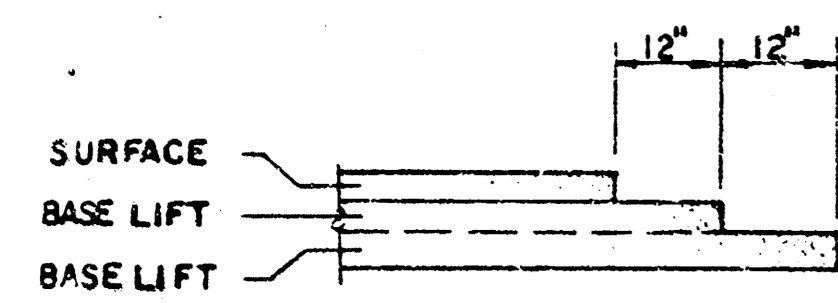


TYPICAL PAVEMENT DETAILS



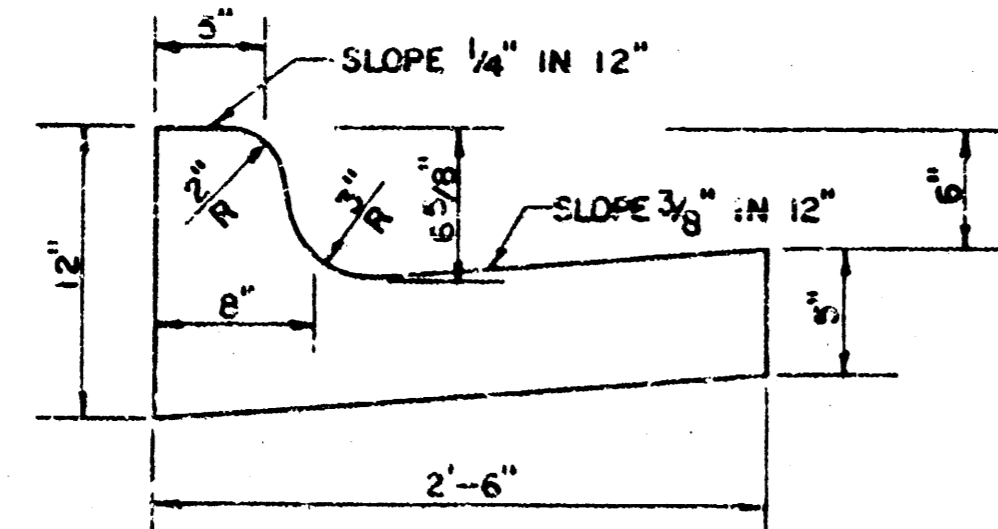
CORNER DETAIL (TYPICAL)

TRANSVERSE CONSTRUCTION JOINTS

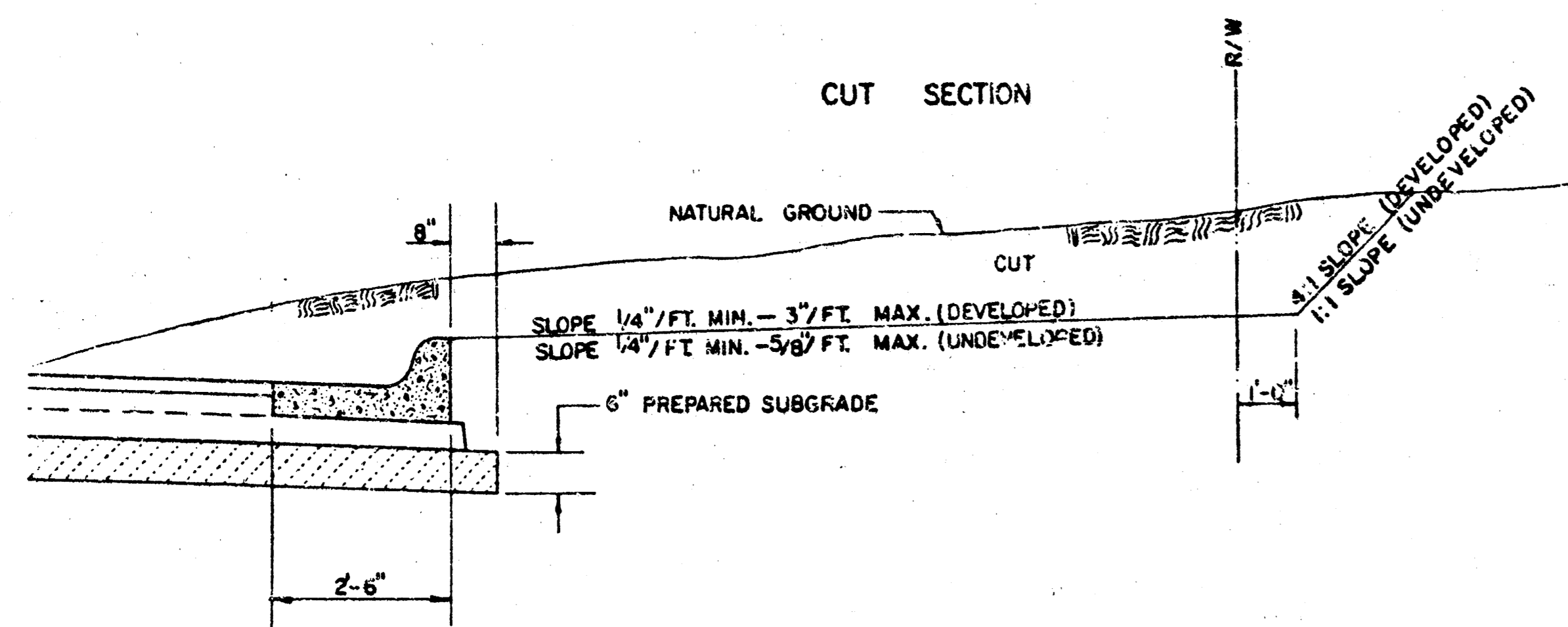


TRANSVERSE CONSTRUCTION JOINTS SHALL BE CONSTRUCTED IN FLEXIBLE BASE PAVEMENTS AT LOCATIONS WHERE PAVEMENT JOINS EXISTING FLEXIBLE BASE PAVEMENT AS SHOWN BY THE DETAIL. ALL COSTS ASSOCIATED WITH THE CONSTRUCTION OF THE TRANSVERSE JOINT SHALL BE INCLUDED IN THE BID PRICE FOR SQUARE YARDS OF ASPHALTIC CONCRETE (6" BITUMINOUS BASE).

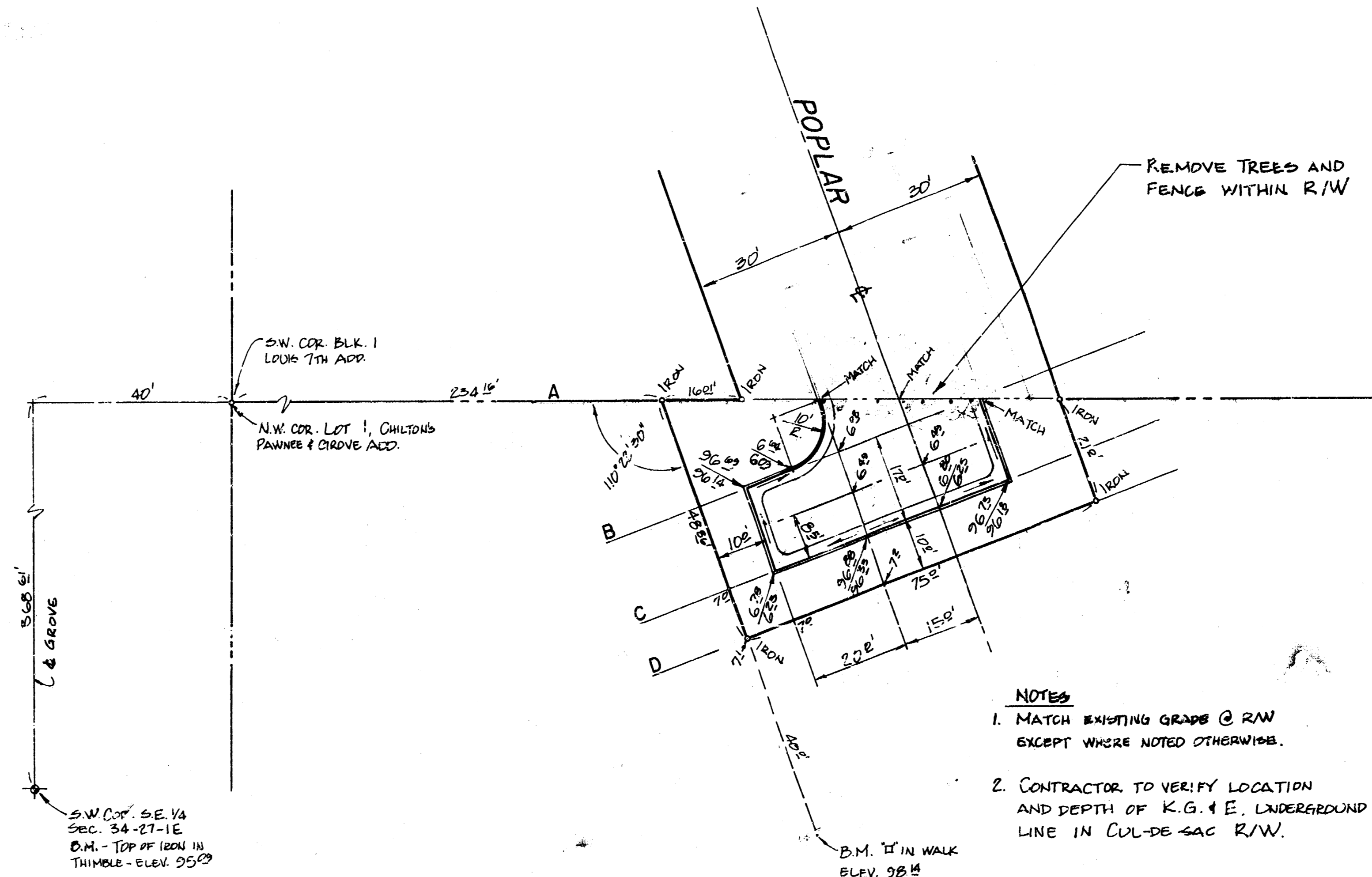
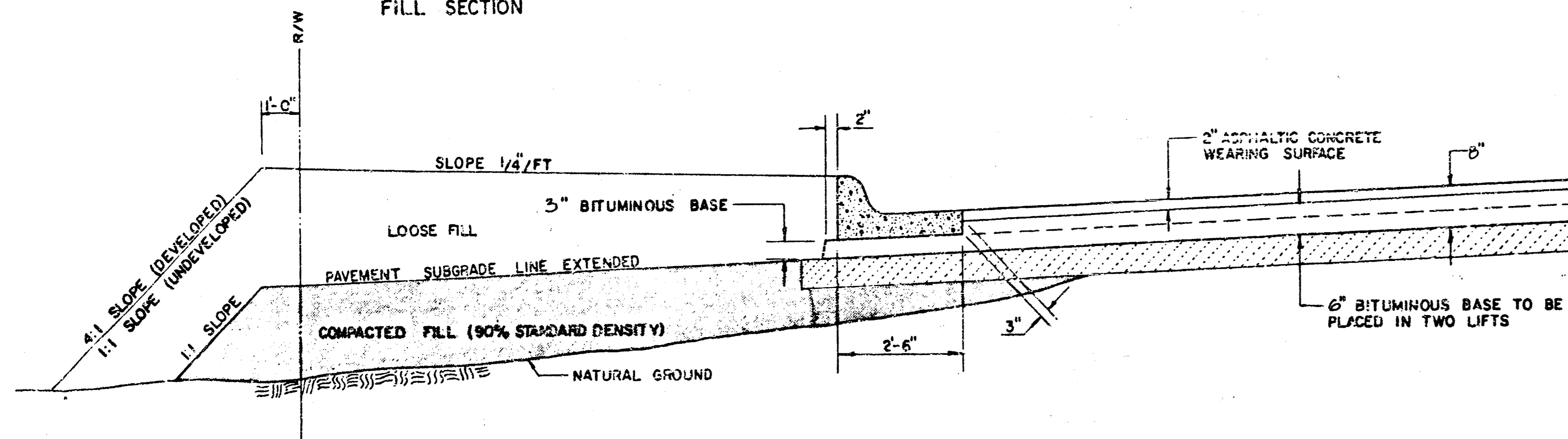
COMBINED CURB & GUTTER



CUT SECTION



FILL SECTION



- NOTES**
1. MATCH EXISTING GRADE @ R/W EXCEPT WHERE NOTED OTHERWISE.
 2. CONTRACTOR TO VERIFY LOCATION AND DEPTH OF K.G. & E. UNDERGROUND LINE IN CUL-DE-SAC R/W.

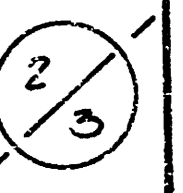
GENERAL NOTES

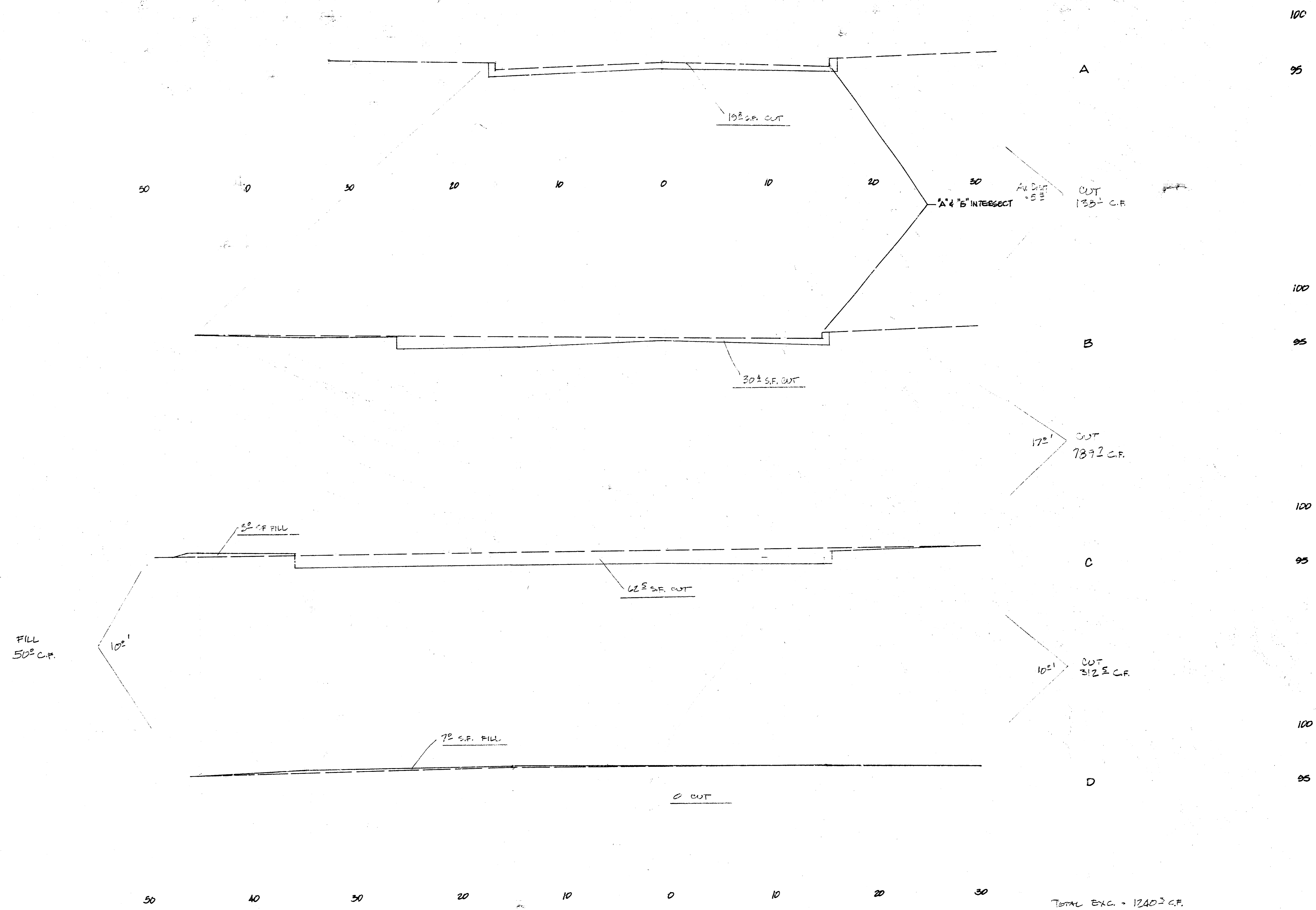
- 1) THE ASPHALTIC CONCRETE PAVEMENT BETWEEN THE COMBINED CURB AND GUTTER SHALL BE PAID AS SQUARE YARDS OF 6" ASPHALTIC CONCRETE (6" BITUMINOUS BASE).
- 2) THE BITUMINOUS BASE UNDER AND BEHIND THE COMBINED CURB AND GUTTER SHALL BE PAID AS SQUARE YARDS OF 3" BITUMINOUS BASE.
- 3) A TACK COAT OF EMULSIFIED ASPHALT (SC-1H OR CSS-1H) SHALL BE APPLIED AT AN APPROXIMATE RATE OF 0.05 GALLONS PER SQUARE YARD BETWEEN EACH LIFT OF ASPHALTIC MATERIAL.
- 4) ~~CONTRACTOR SHALL BE RESPONSIBLE FOR VERIFYING THE LOCATION AND DEPTH OF ALL UNDERGROUND UTILITIES AND RECORDING THEM ON THE CONSTRUCTION OF THIS PROJECT.~~
- 5) CONSTRUCTION JOINTS IN EACH LIFT SHALL BE STAGGERED A MINIMUM DISTANCE OF ONE (1) FOOT FROM JOINTS IN PRECEDING LIFTS AND PLACED SO THAT A JOINT SHALL BE CONSTRUCTED ON THE CENTERLINE OF THE CURB OR GUTTER.
- 6) CONTRACTOR TO BID ONLY ONE SUBGRADE TREATMENT ALTERNATE WHEN ALTERNATES ARE PROVIDED IN THE PROPOSAL AND CONTRACT. THE ALTERNATE CHOSEN BY THE SUCCESSFUL BIDDER SHALL BE USED IN CONSTRUCTING THIS PROJECT.

POPLAR CIRCLE & TYPICAL SECTIONS

Proj. no. 472-76-245-80357-000-000-001

BAUGHMAN COMPANY, P.A.
SURVEYING & ENGINEERING
316/262-7271 • 330 LAURA • WICHITA, KANSAS 67211





TOTAL EXC. - 1240 SF.
 = 45 1/2 C.Y.
 TOTAL FILL - 50 SF.
 = 1 1/2 C.Y.

POPLAR CIRCLE

PROJ. NO. 472-76-245-80357-000-000-001

14 4 3 13

3/3