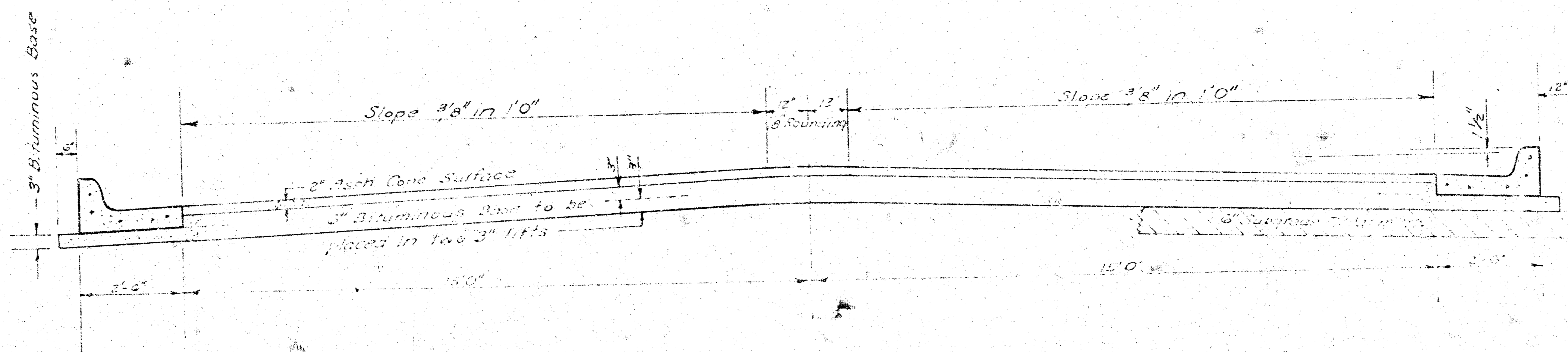


PRESCOTT & 14TH STREET

N.L. 13TH TO W.L. BLOCKS 18 & 19, WESTLINK VILLAGE 14TH.

PROJ No. 472-76-245-80508-000-000-001



TYPICAL SECTION

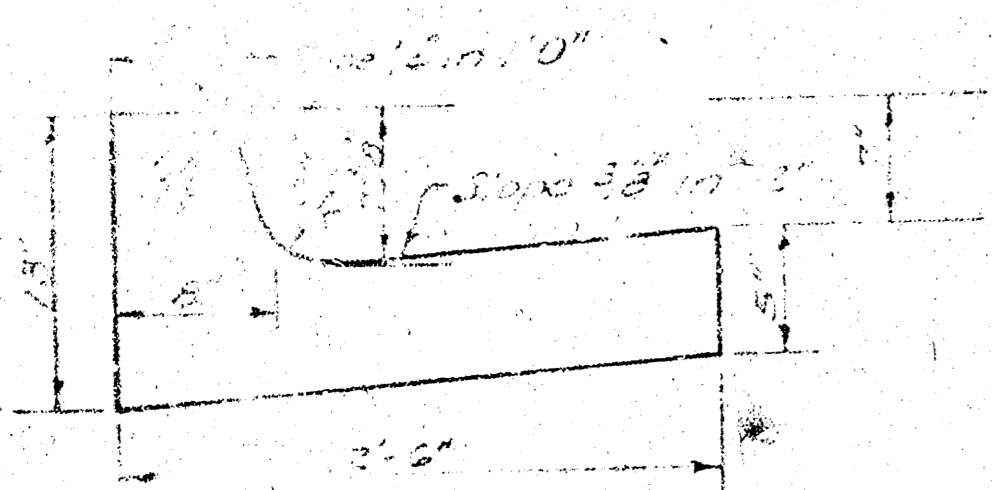
35' ASPHALTIC CONCRETE PAVEMENT WITH BITUMINOUS BASE

A TACK COAT OF EMULSIFIED ASPHALT (SS-1H) SHALL BE APPLIED AT AN APPROXIMATE RATE 0.05 GALLONS PER SQ YD BETWEEN LIFTS OF ASPHALTIC MATERIALS WHEN ORDERED BY THE ENGINEER. TACK COAT WILL NOT BE PAID FOR DIRECTLY AND SHALL BE CONSIDERED AS SUBSIDIARY TO PRICE BID FOR ASPHALTIC PAVEMENT.

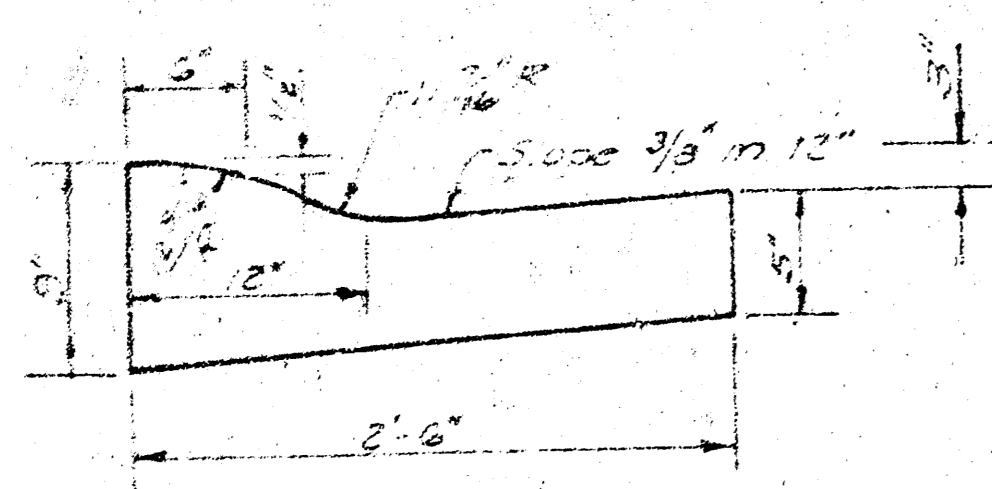
BITUMINOUS BASE AND ASPHALTIC CONCRETE WEARING SURFACE SHALL BE PLACED WITH A LAYDOWN MACHINE HAVING AUTOMATIC ELECTRONIC CONTROLS FOR CROWN AND GRADE. CONSTRUCTION JOINTS IN EACH LIFT SHALL BE STAGGERED A MINIMUM DISTANCE OF 1' WITH JOINTS IN PRECEDING LIFTS AND PLACED SUCH THAT A JOINT WILL BE CONSTRUCTED ON THE CENTERLINE IN THE TOP LIFT.

The 3\"/>

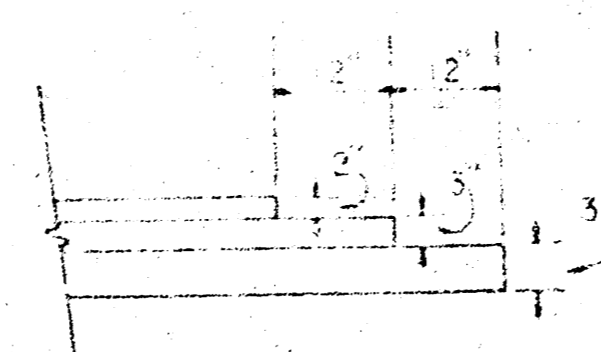
CONTINUED CURB & GUTTER



ROLL TYPE CURB & GUTTER



DETAIL OF TRANSVERSE CONSTRUCTION JOINTS



TRANSVERSE CONSTRUCTION JOINTS SHALL BE CONSTRUCTED IN FLEXIBLE BASE PAVEMENTS AT LOCATIONS WHERE PAVEMENT TEMPORARILY ENDS TO FACILITATE FUTURE PAVEMENT CONSTRUCTION AS SHOWN BY DETAIL. THE COST OF CONSTRUCTING THE TRANSVERSE CONSTRUCTION JOINTS SHALL NOT BE MEASURED OR PAID FOR DIRECTLY BUT SHALL BE INCLUDED IN THE BID PRICE FOR SQUARE YARDS OF ASPHALTIC CONCRETE PAVEMENT.



CITY OF WICHITA KANSAS

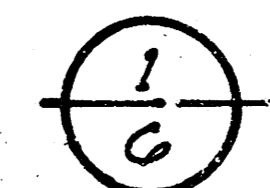
DEPARTMENT of PUBLIC WORKS - Engineering Division.

R. W. LINN

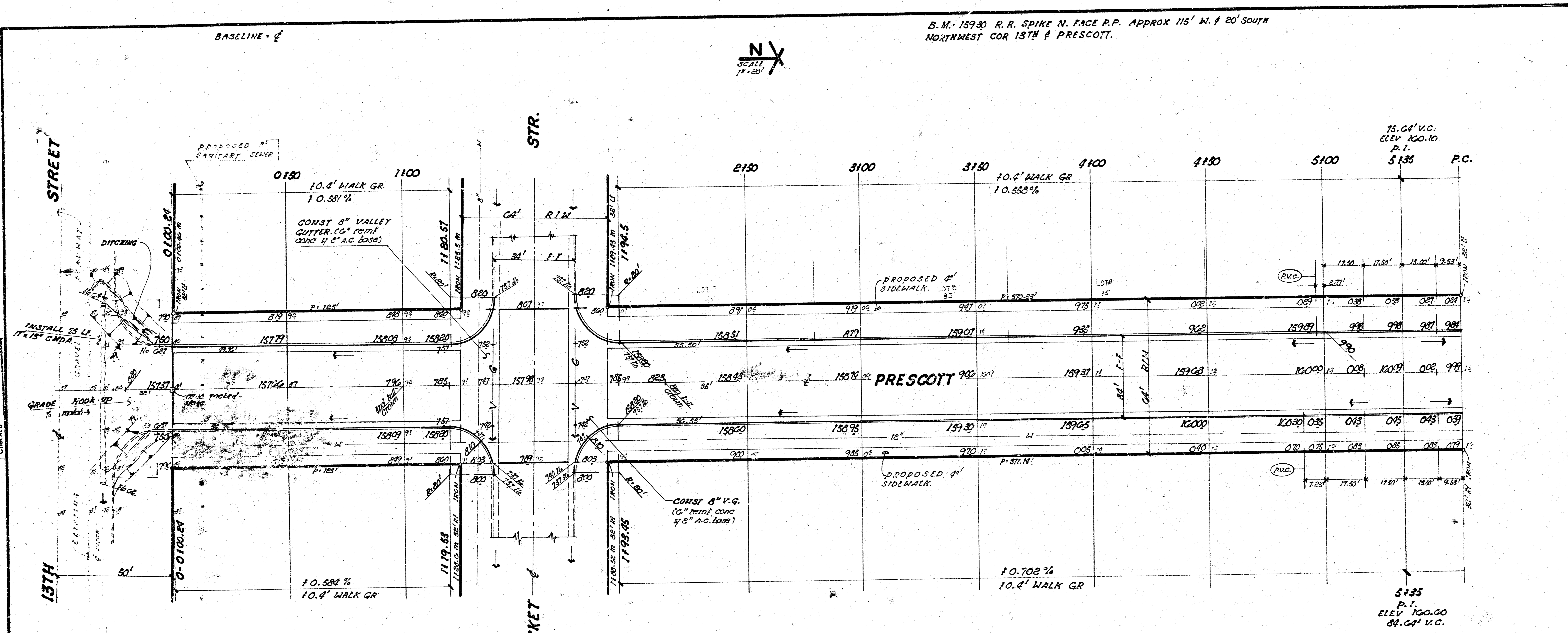
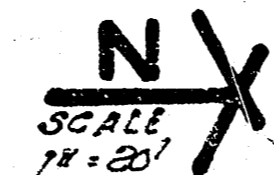
CITY ENGINEER

DATE

Proj No.



B.M. 15930 R.R. SPIKE N. FACE P.P. APPROX 115' W. & 20' SOUTH
NORTHWEST COR 13TH & PRESCOTT.



SURVEY ARMOUR, P.L.L.C.
 P.L.L.C.
 L.S.
 Checked

NOTE: PAVING CONTRACTOR TO CO-ORDINATE CONSTRUCTION WITH SEWER CONTRACTOR.

DITCHING COST FOR DITCH EXCAVATION AND GRADING IS TO BE INCLUDED IN COST OF OTHER BID ITEMS.

NOTE TO FIELD ENGINEER: CONCERNING proposed parking and other right-of-way in proposed sidewalk. Compare bid in sidewalk area. TO BE CONSTRUCTED BY "OTHERS".

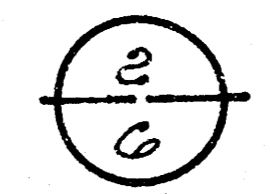
SUB-GRADE
 TYPE OF SUB-GRADE TREATMENT SHALL BE DETERMINED BY THE FIELD ENGINEER. SUB-GRADE TREATMENT MAY CONSIST OF LIME TREATMENT, CEMENT TREATMENT, SUB-GRADE MODIFICATION, OR ANY COMBINATION OF THESE.

NO DRIVES TO BE CONSTRUCTED ON THIS PROJECT.

EARTHWORK PROPERTY		CITY	
EXCAVATION	C. FILL	EXCAVATION	
3865.5 CU YDS	5.2 CU YDS	583.2 CU YDS	
+10% 386.0	10% .5	+10% 58.3	
4252.1 CU YDS	5.7 CU YDS	641.5 CU YDS	

4945 S.Yds MANIPULATION

PRESCOTT & 14TH STR.
 N.L. 13TH STREET TO W.L. BLOCKS 18 & 19, WESTLINK VILLAGE 14TH ADDN.
CITY OF WICHITA, KANSAS
 (34' F.F.) 2" ASPH CONC WEARING SURFACE
 C" BITUMINOUS BASE 1/4 COMB CB & GTR.
 R.M. LINN CITY ENGINEER
 PROJ. No. 472-76-245-80502000-000-001



FILMED FROM THE BEST AVAILABLE COPY.....

CURVE DATA BASED ON $\frac{1}{2}$ RADIUS 118.00' $\Delta = 57^{\circ} 30'$
 TAN = 64.74'
 14.562 MIN/H ARC

STATION	ARC	ch length $\frac{1}{2}$ o.s. to E. of cb	ch length $\frac{1}{2}$ o.s. to W. of cb	DEFLECTION	TOTAL DEFLECTION
P.C. 5159.53					00° 00' 00"
175	15.47'	18.73'	12.18'	3° 45' 21"	3° 45' 21"
6100	25.00'	30.24'	19.67'	6° 04' 10"	9° 09' 31"
125					15° 53' 41"
180	25.00'	30.24'	19.67'	6° 04' 10"	21° 57' 51"
P.T. 6177.95	27.95'	33.79'	21.98'	6° 47' 09"	28° 45' 00"



CURVE DATA BASED ON $\frac{1}{2}$ RADIUS 112.92' $\Delta = 32^{\circ} 30'$
 TAN = 32.91'
 15.222 MIN/H ARC

STATION	ARC	ch length $\frac{1}{2}$ o.s. to S. of cb	ch length $\frac{1}{2}$ o.s. to N. of cb	DEFLECTION	TOTAL DEFLECTION
P.C. 8163.09					0° 00' 00"
175	11.31'	3.80'	13.80'	2° 32' 10"	2° 32' 10"
9100	25.00'	19.43'	30.47'	6° 20' 33"	9° 12' 43"
120.30					15° 21' 44"
123.47	3.11'	2.47'	5.07'	0° 43' 16"	16° 10' 00"
P.T. 9127.74	4.27'	3.25'	5.09'	1° 05' 00"	16° 15' 00"

