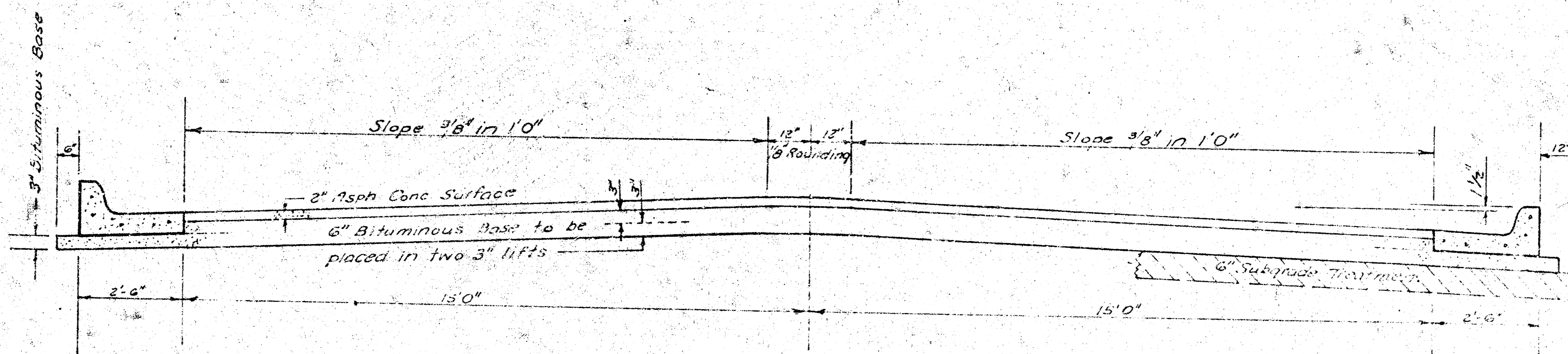


PRESCOTT CIRCLE
N.L. PARKDALE TO & INCLUDING CUL-DE-SAC
PROJ No. 472-76-245-80507000 - 000-001



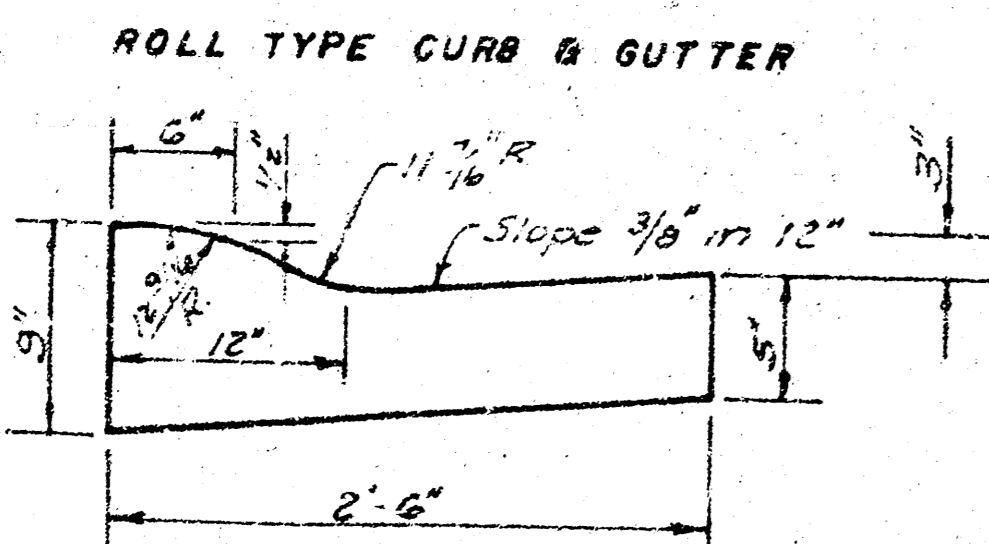
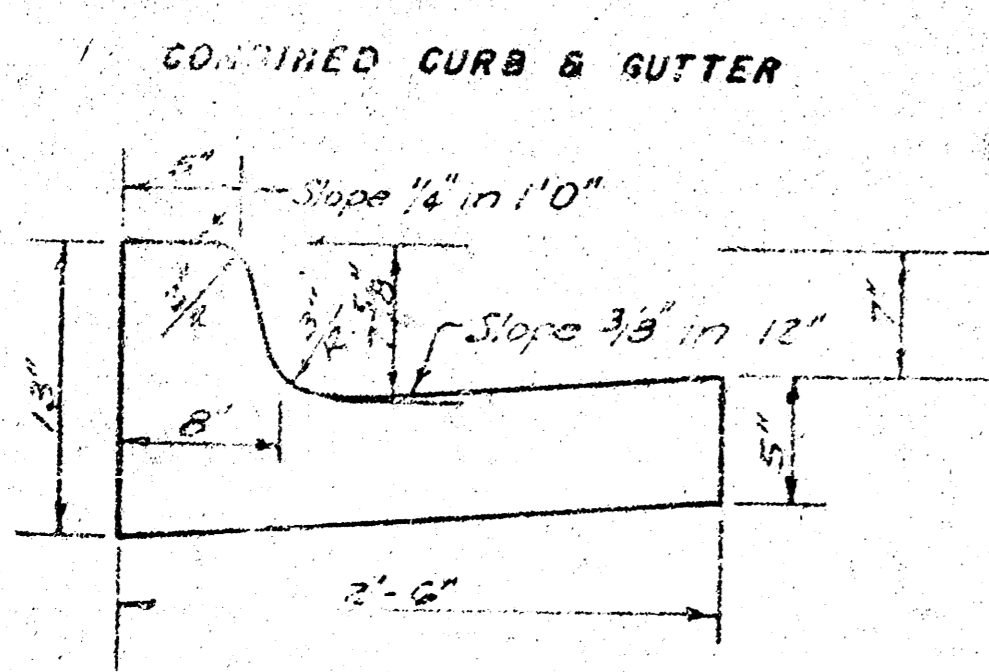
TYPICAL SECTION

35' ASPHALTIC CONCRETE PAVEMENT WITH BITUMINOUS BASE

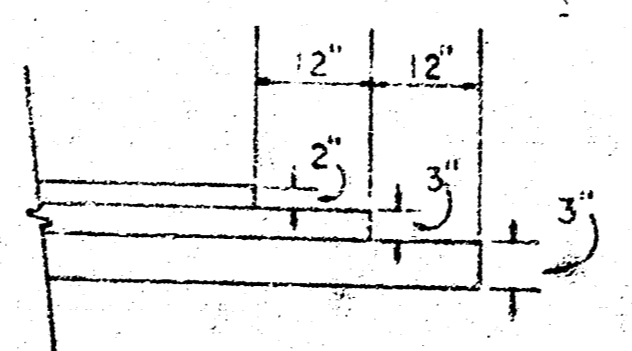
A TACK COAT OF EMULSIFIED ASPHALT (SS-1H) SHALL BE APPLIED AT AN APPROXIMATE RATE 0.05 GALLONS PER SQ YD BETWEEN LIFTS OF ASPHALTIC MATERIALS WHEN ORDERED BY THE ENGINEER. TACK COAT WILL NOT BE PAID FOR DIRECTLY AND SHALL BE CONSIDERED AS SUBSIDIARY TO PRICE BID FOR ASPHALTIC PAVEMENT.

BITUMINOUS BASE AND ASPHALTIC CONCRETE WEARING SURFACE SHALL BE PLACED WITH A LAYDOWN MACHINE HAVING AUTOMATIC ELECTRONIC CONTROLS FOR CROWN AND GRADE. CONSTRUCTION JOINTS IN EACH LIFT SHALL BE STAGGERED A MINIMUM DISTANCE OF 1' WITH JOINTS IN PRECEDING LIFTS AND PLACED SUCH THAT A JOINT WILL BE CONSTRUCTED ON THE CENTERLINE IN THE TOP LIFT.

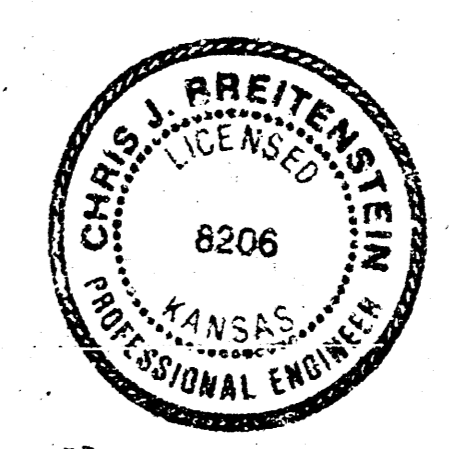
The P.C. Pavement between the curb and gutter shall be paid as Slopes 3/8" in 10' (part of Bituminous Base). The Bituminous Base under the curb & gutter shall be paid as Slopes 3/8" Bituminous Base.



DETAIL OF TRANSVERSE CONSTRUCTION JOINTS



TRANSVERSE CONSTRUCTION JOINTS SHALL BE CONSTRUCTED IN FLEXIBLE BASE PAVEMENTS AT LOCATIONS WHERE PAVEMENT TEMPORARILY ENDS TO FACILITATE FUTURE PAVEMENT CONSTRUCTION AS SHOWN BY DETAIL. THE COST OF CONSTRUCTING THE TRANSVERSE CONSTRUCTION JOINTS SHALL NOT BE MEASURED OR PAID FOR DIRECTLY BUT SHALL BE INCLUDED IN THE BID PRICE FOR SQUARE YARDS OF ASPHALTIC CONCRETE PAVEMENT.

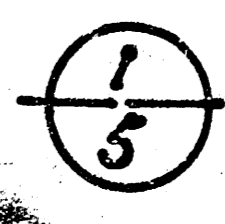


CITY OF WICHITA KANSAS

DEPARTMENT of PUBLIC WORKS - Engineering
 Division

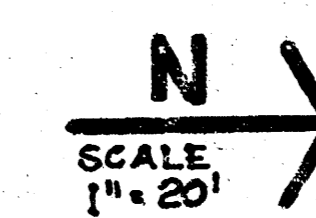
R. W. LINN CITY ENGINEER

DATE _____



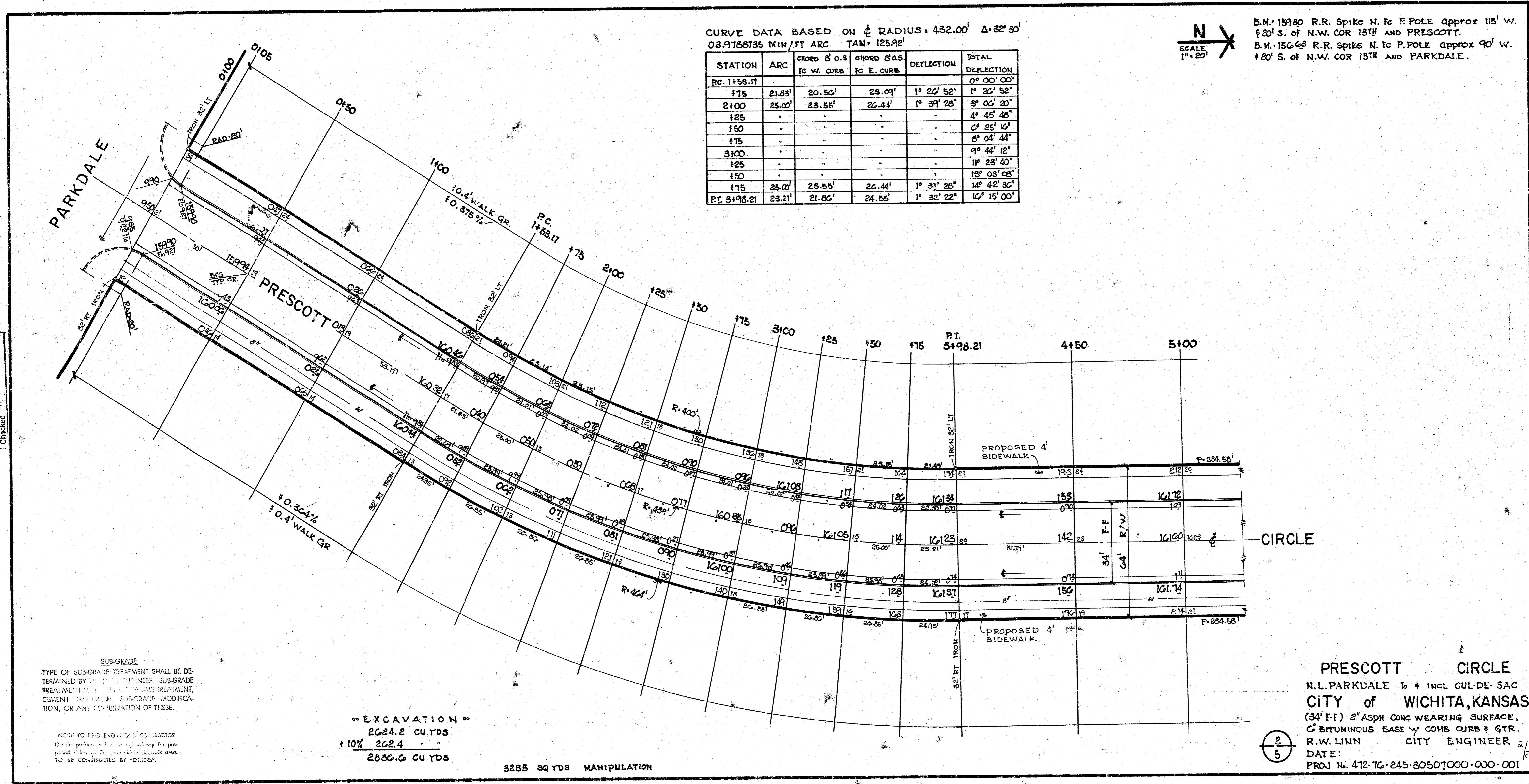
CURVE DATA BASED ON ϕ RADIUS: 432.00' $\Delta=32^{\circ}30'$
 03.9768735 MIN/FT ARC TAN= 125.92'

STATION	ARC	CHORD S.O.S. RC W. CURB	CHORD S.O.S. RC E. CURB	DEFLECTION	TOTAL DEFLECTION
PC 1+53.17					0° 00' 00"
+175	21.83'	20.50'	23.09'	1° 20' 52"	1° 20' 52"
2+100	25.00'	23.55'	26.44'	1° 37' 25"	3° 00' 20"
+225					4° 45' 48"
+250					6° 25' 16"
+275					8° 04' 44"
3+100					9° 44' 12"
+325					11° 23' 40"
+350					13° 03' 08"
+375	25.00'	23.55'	26.44'	1° 37' 25"	14° 42' 32"
PT. 3+98.21	23.21'	21.80'	24.55'	1° 32' 22"	16° 15' 00"



B.M. 15930 R.R. Spike N. to P. POLE approx 115' W.
 +20' S. of N.W. COR 13TH AND PRESCOTT.
 B.M. 15663 R.R. Spike N. to P. POLE approx 90' W.
 +20' S. of N.W. COR 13TH AND PARKDALE.

SURVEY REVISIONS: 01 JUN 25
 Plan W.E.E., JR.
 Ex.
 Checked



SUB-GRADE
 TYPE OF SUB-GRADE TREATMENT SHALL BE DETERMINED BY THE CIVIL ENGINEER. SUB-GRADE TREATMENT MAY CONSIST OF LIME TREATMENT, CEMENT TREATMENT, SUB-GRADE MODIFICATION, OR ANY COMBINATION OF THESE.

NOTE TO FIELD ENGINEER & CONTRACTOR
 Grade posting and clear zone for proposed sidewalk. Grading to be constructed by "OTHERS".

EXCAVATION
 2624.2 CU YDS
 +10% 262.4
 2886.6 CU YDS
 3285 SQ YDS MANIPULATION

2
5

PRESCOTT CIRCLE
 N.L. PARKDALE to + INCL CUL-DE-SAC
 CITY of WICHITA, KANSAS
 (34' F.F.) 2" ASPH CONC WEARING SURFACE,
 6" BITUMINOUS BASE w/ COMB CURB & GTR.
 R.W. LINN CITY ENGINEER
 DATE:
 PROJ. No. 412-76-245-80501000-000-001

