

STREET & SIDEWALK - ALLEY AND SANITARY SEWER IMPROVEMENTS PROJECT CAROL, PHASE I

URBAN RENEWAL AGENCY

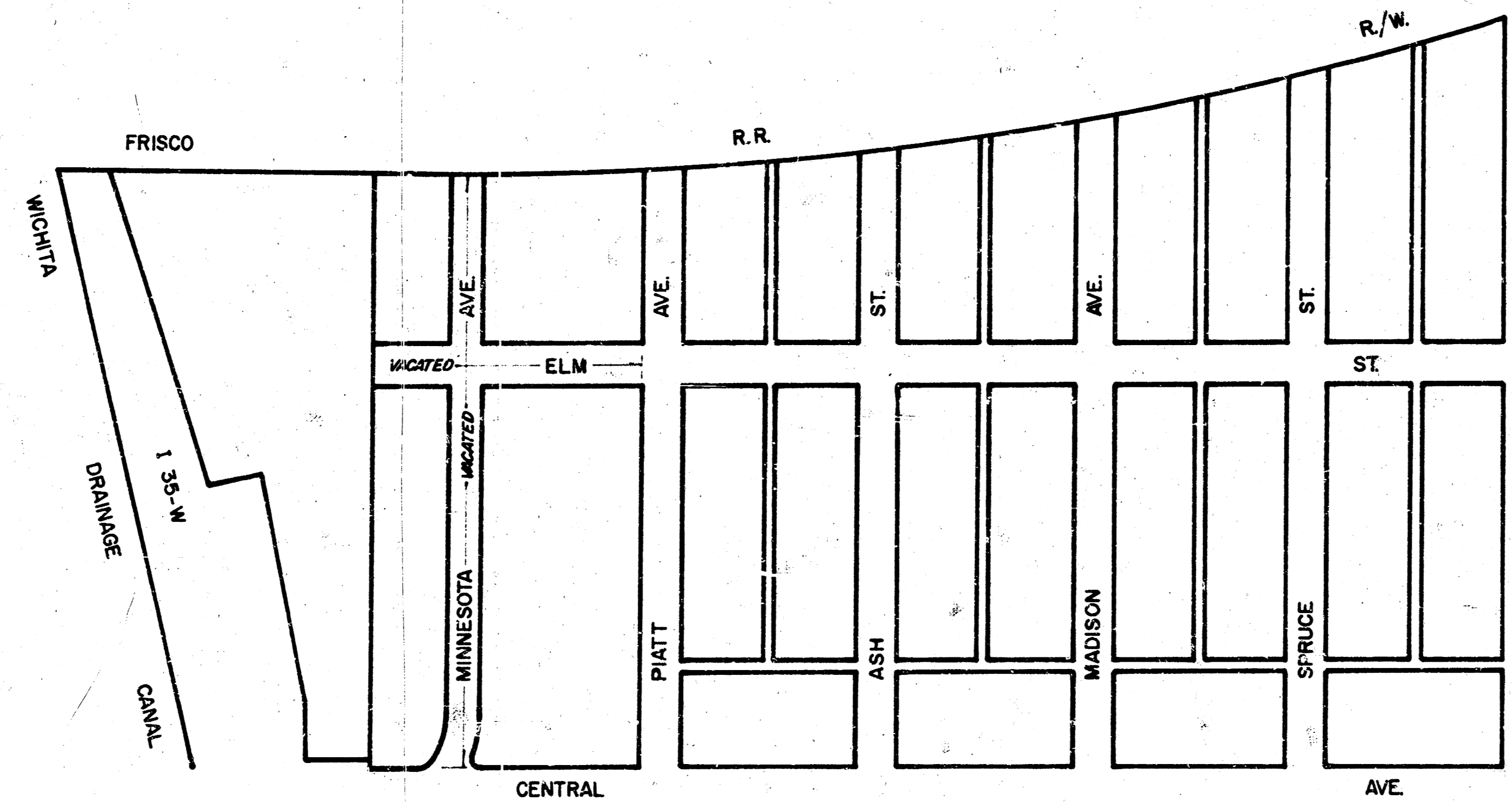
PROJECT NO. N.D.P. KAN. NO. A-5-2

ALLEY IMPROVEMENTS SUMMARY OF QUANTITIES

QUANT.	UNIT	DESCRIPTION
1,860	S.Y.	7" CONCRETE PAVEMENT
1,120	L.F.	KEY JOINT
12,800	Lbs.	REINFORCING STEEL
530	C.Y.	EXCAVATION
325	C.Y.	COMPACTED FILL
200	S.F.	4" WALK
40	L.F.	SAWED JOINT
540	S.Y.	PAVEMENT REMOVED
420	S.Y.	ASPHALT SURFACE REMOVED
470	S.F.	WALK & DRIVE REMOVED
80	L.F.	FENCE REMOVED
40	L.F.	HEDGE REMOVED
2	S.F.	SMALL TREES REMOVED
5	S.F.	ROAD GRAVEL
80	L.F.	FENCE REPLACED
100	S.F.	6" DRIVE
30	Tons	ASPHALT

SANITARY SEWER IMPROVEMENTS SUMMARY OF QUANTITIES

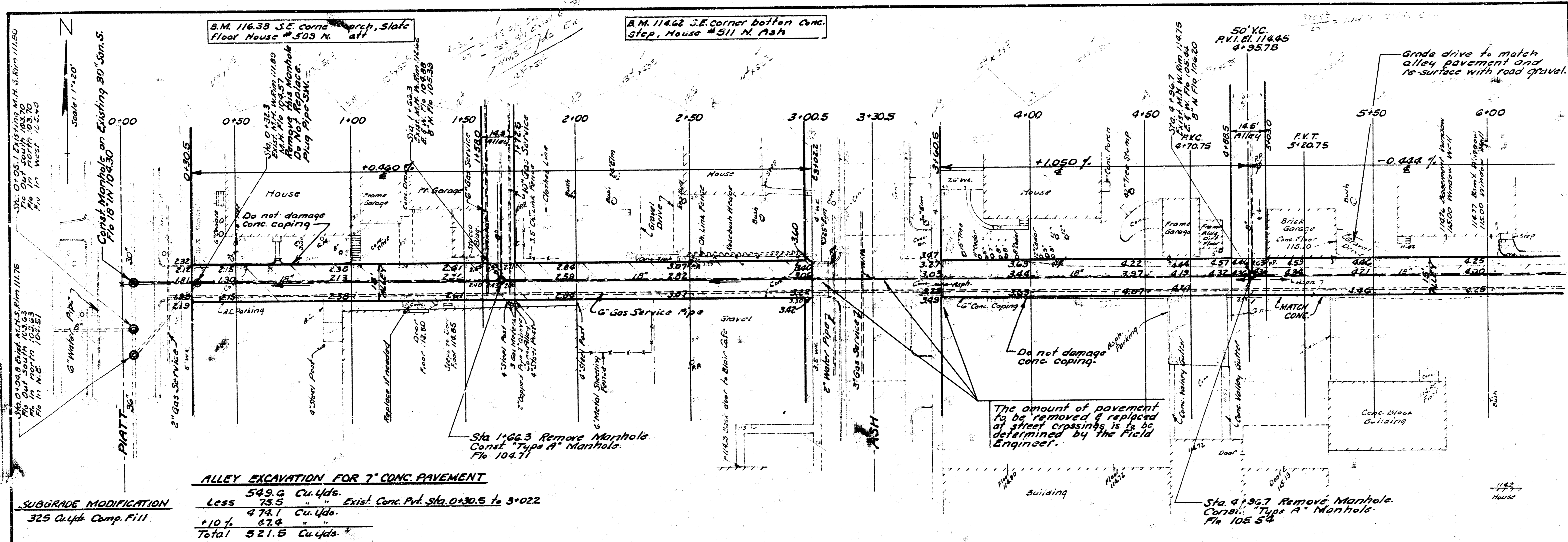
QUANT.	UNIT	DESCRIPTION
3,200	L.F.	8" CLAY PIPE
510	L.F.	15" CLAY PIPE
850	L.F.	18" CLAY PIPE
75	L.F.	6" CAST IRON PIPE
17	Ea.	TYPE "A" MANHOLES
1	Ea.	TYPE "B" MANHOLES
130	Ea.	SERVICE CONNECTIONS
20	Ea.	MANHOLES REMOVED
400	S.Y.	PAVEMENT REMOVED
15	Tons	ASPHALT
200	Tons	GRANULAR EMBEDMENT
4,600	Tons	SAND FILL
4,650	L.F.	FLUSHING



STREET & SIDEWALK IMPROVEMENTS SUMMARY OF QUANTITIES

QUANT.	UNIT	DESCRIPTION
2,190	S.Y.	ASPH. CONC. PAVEMENT
3,170	S.Y.	7" CONC. PAVEMENT
7,510	L.F.	COMBINED CURB & GUTTER
1,530	L.F.	INTEGRAL CURB
4,770	L.F.	KEY JOINT
21,000	Lbs.	REINFORCING STEEL
6,780	S.F.	SEPARATE GUTTER
1,690	L.F.	SEPARATE CURB
11,040	S.F.	6" DRIVE
25,740	S.F.	4" WALK
1,430	S.F.	9" WALK
550	L.F.	SAWED JOINT
85	TONS	ASPHALT
420	TONS	SAND FILL
5,350	S.Y.	PAVEMENT REMOVED
590	S.Y.	ASPHALT SURFACE REMOVED
7,560	L.F.	COMBINED CURB & GUTTER REMOVED
30,060	S.F.	WALK & DRIVE REMOVED
5	Ea.	LARGE TREES REMOVED
5	Ea.	SMALL TREES REMOVED
15	Ea.	INLETS ADJUSTED

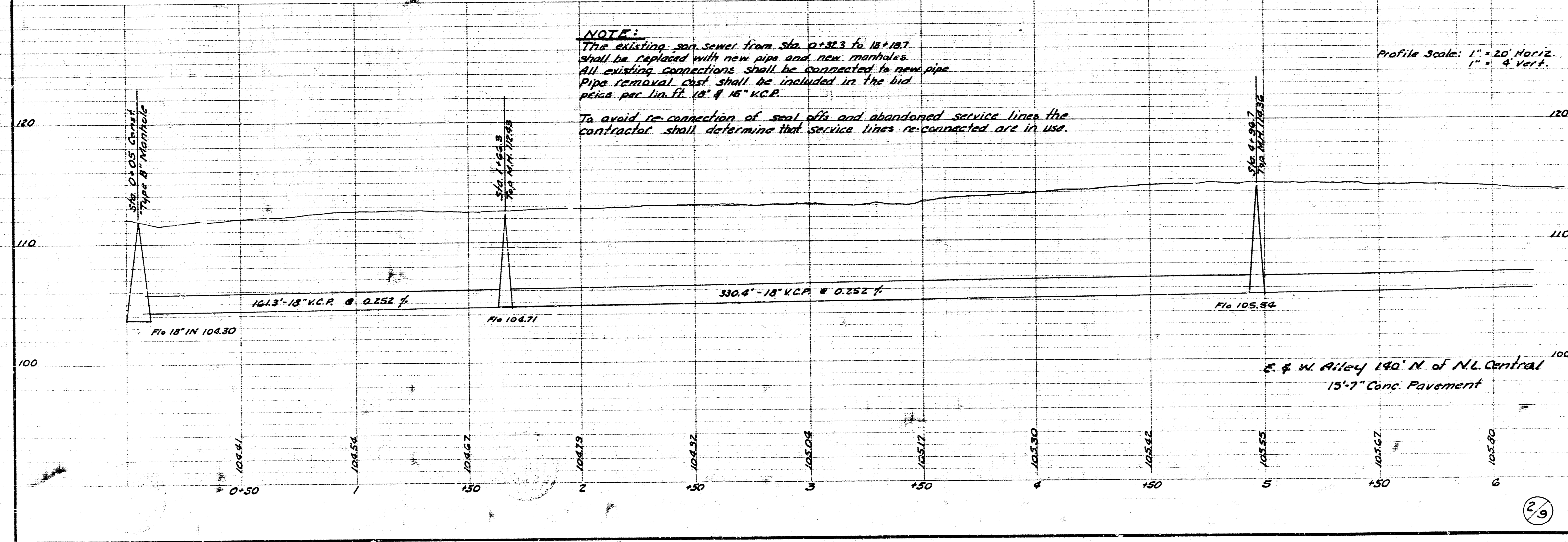
NOTE- The excavation required for street & sidewalk improvement shall be considered incidental to the cost for this portion of the project.



ALLEY EXCAVATION FOR 7" CONC. PAVEMENT

549.6 Cu. Yds.	Exist. Conc. Pav. Sta. 0+30.5 to 3+022
Less 75.5	
474.1 Cu. Yds.	
+10% 47.4	
Total 521.5 Cu. Yds.	

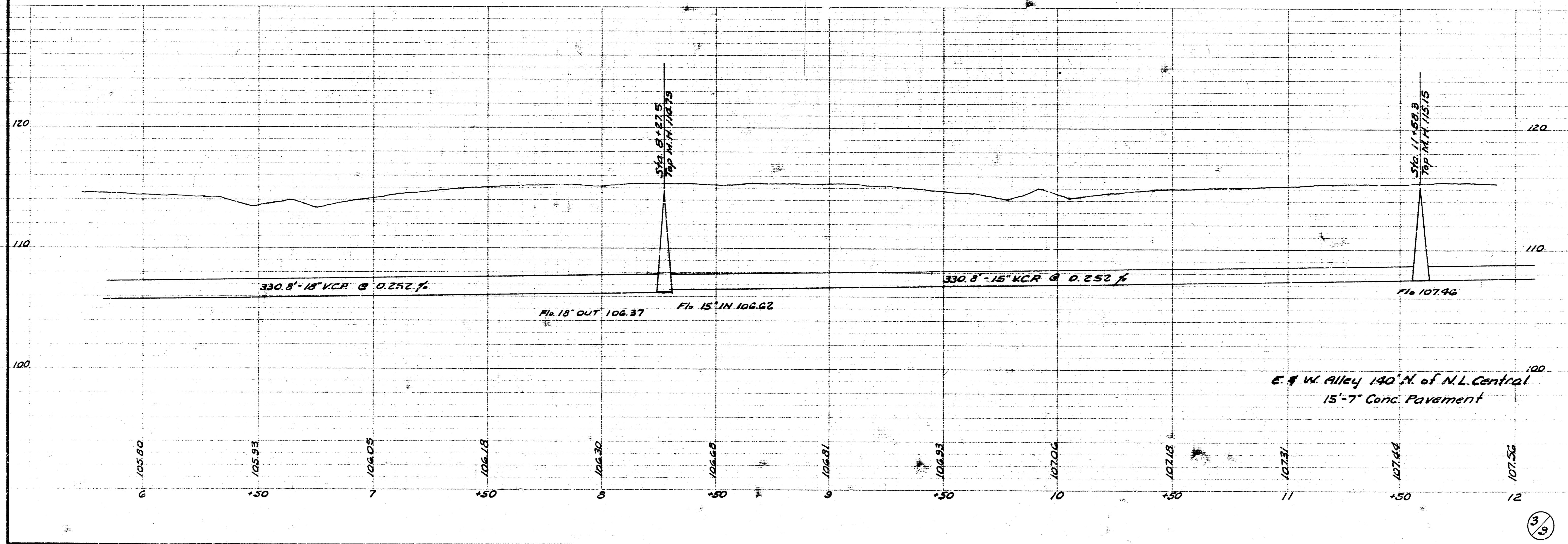
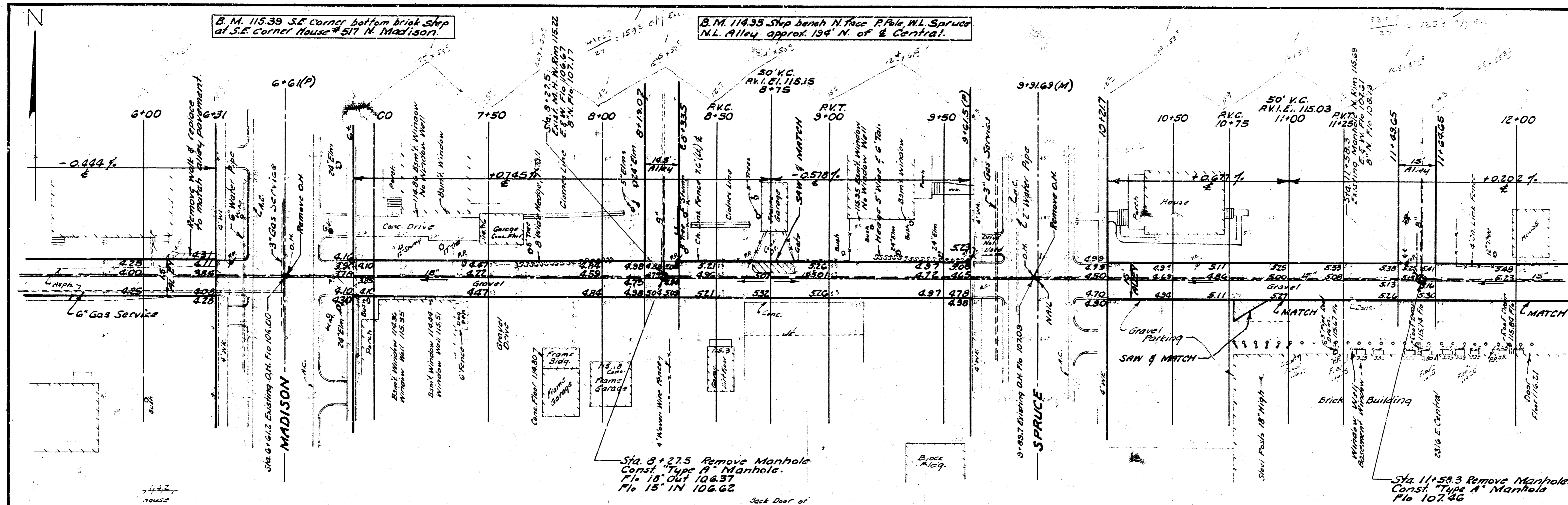
SUBGRADE MODIFICATION
325 Cu. Yds. Comp. Fill.



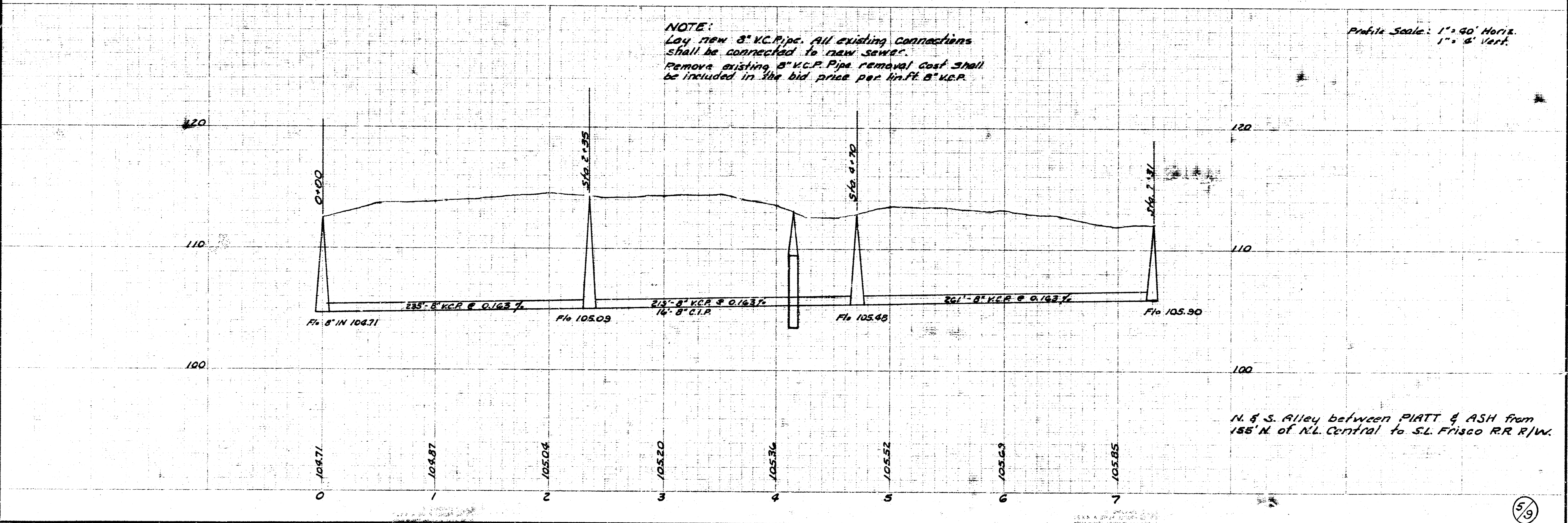
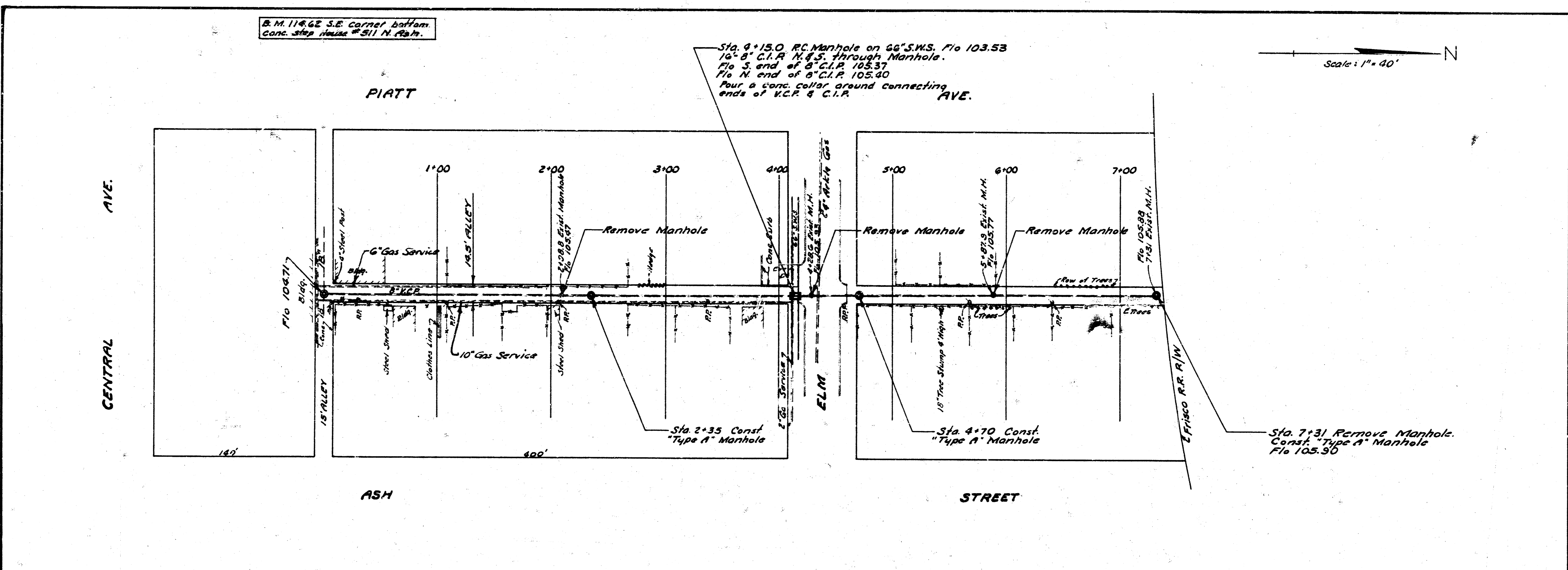
NOTE:
The existing sewer from Sta. 0+32.3 to 12+127 shall be replaced with new pipe and new manholes. All existing connections shall be connected to new pipe. Pipe removal cost shall be included in the bid price per lin. ft. 12" & 18" V.C.P.
To avoid re-connection of seal offs and abandoned service lines the contractor shall determine that service lines re-connected are in use.

Profile Scale: 1" = 20' Horiz.
1" = 4' Vert.

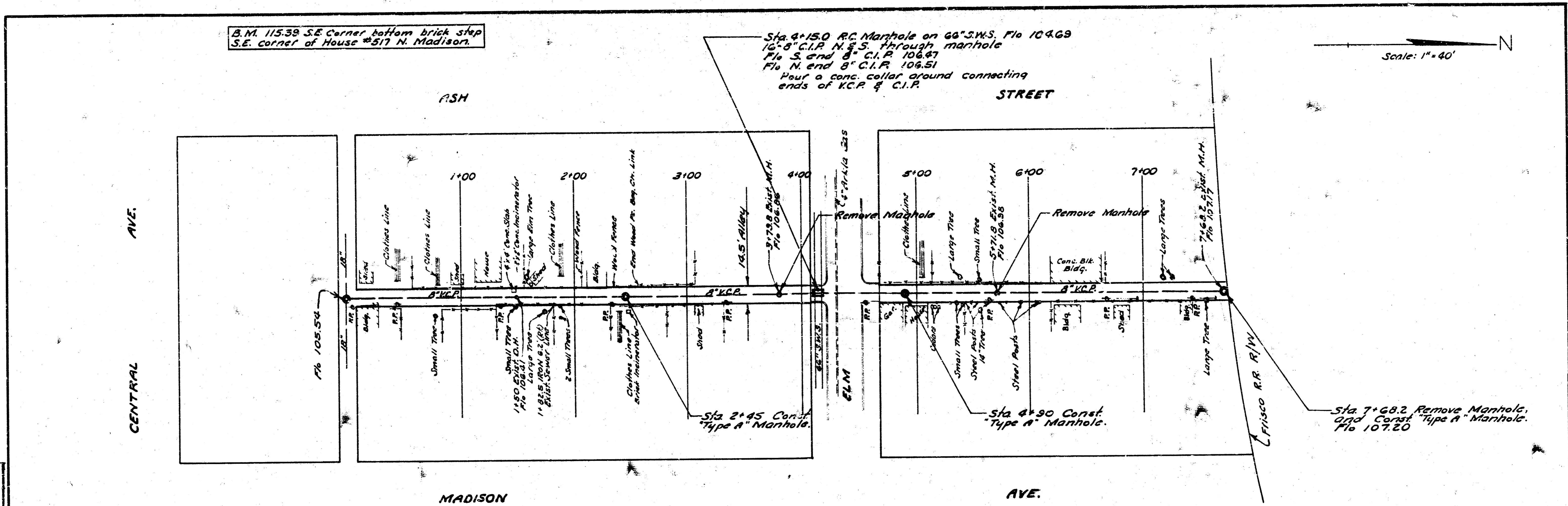
E. & W. Alley 190' N. of N.L. Central
15'-7" Conc. Pavement



Survey DCO W#19
Plan JLR
CK
08/23/89

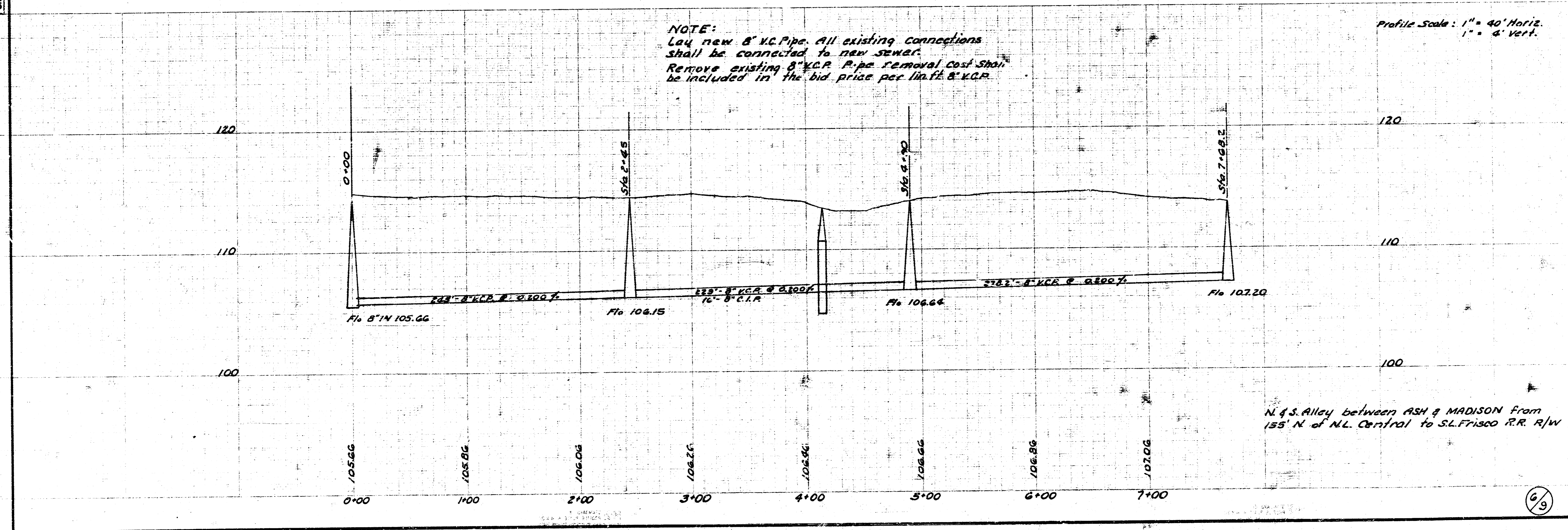


N. & S. Alley between PIATT & ASH from
155' N. of N.L. Central to S.L. Frisco RR R/W.

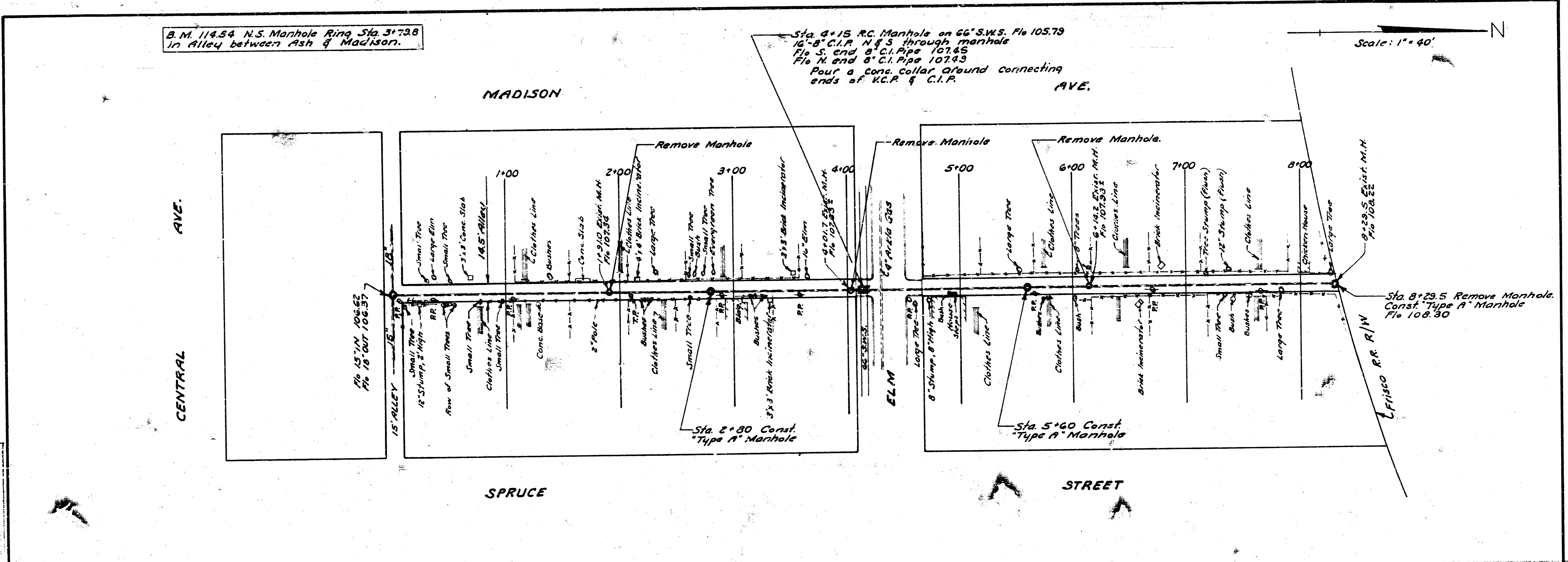


Survey D.G.D. No. 4719
 Plan U.L.P.
 C. 10/20/00

NOTE:
 Lay new 8" V.C.P. All existing connections shall be connected to new sewer.
 Remove existing 8" V.C.P. Pipe removal cost shall be included in the bid price per lin. ft. 8" V.C.P.



N. & S. Alley between ASH & MADISON From 155' N. of N.L. Central to S.L. Frisco R.R. R/W

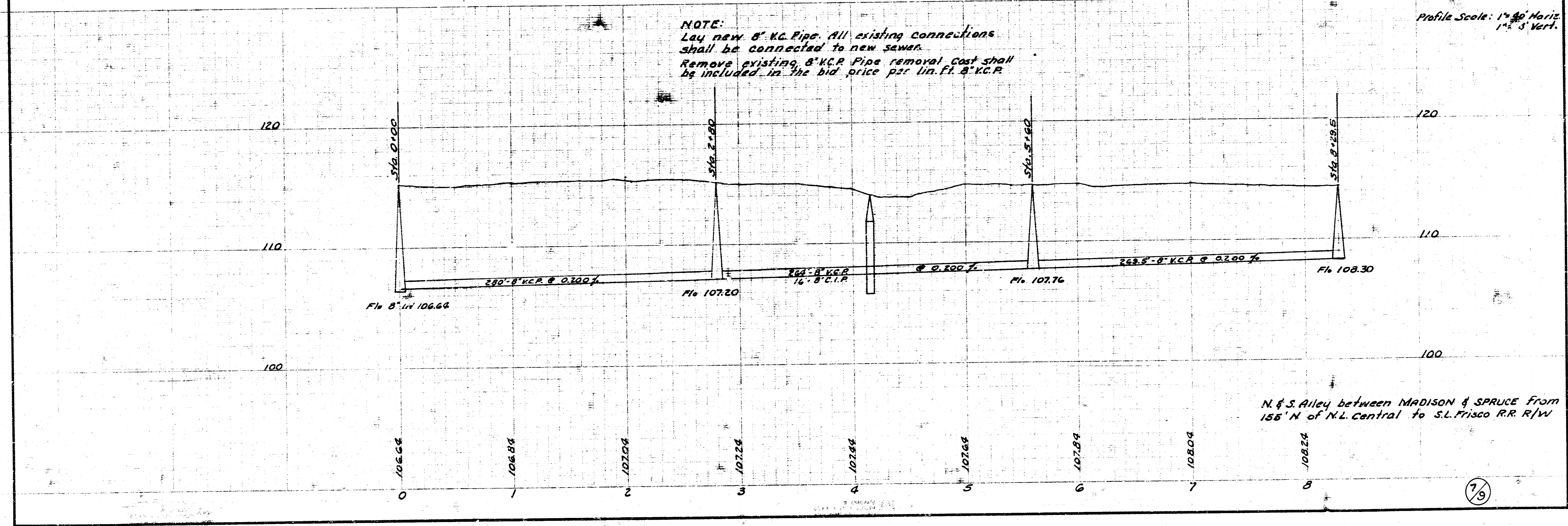


B.M. 114.54 N.S. Manhole Ring Sta 3+73.8
in Alley between Ash & Madison.

Sta. 0+15 RC Manhole on 66\"/>

Scale: 1" = 40'

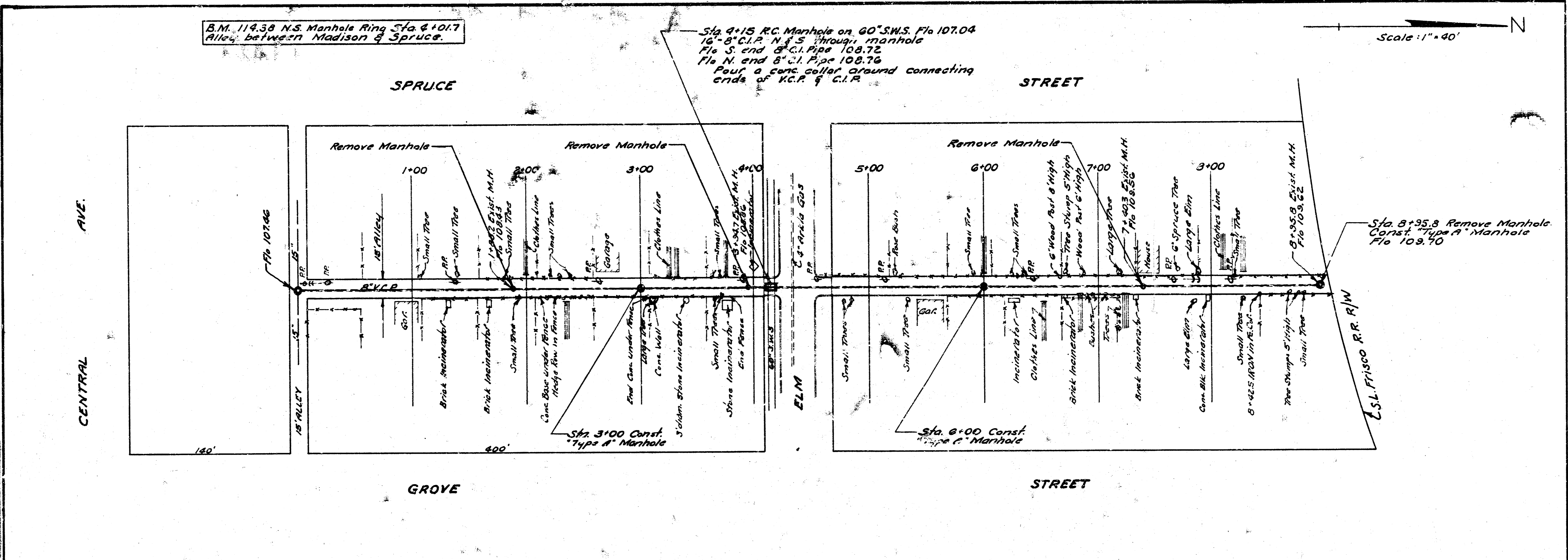
D.C.D. 7-8-20
J.L.A.



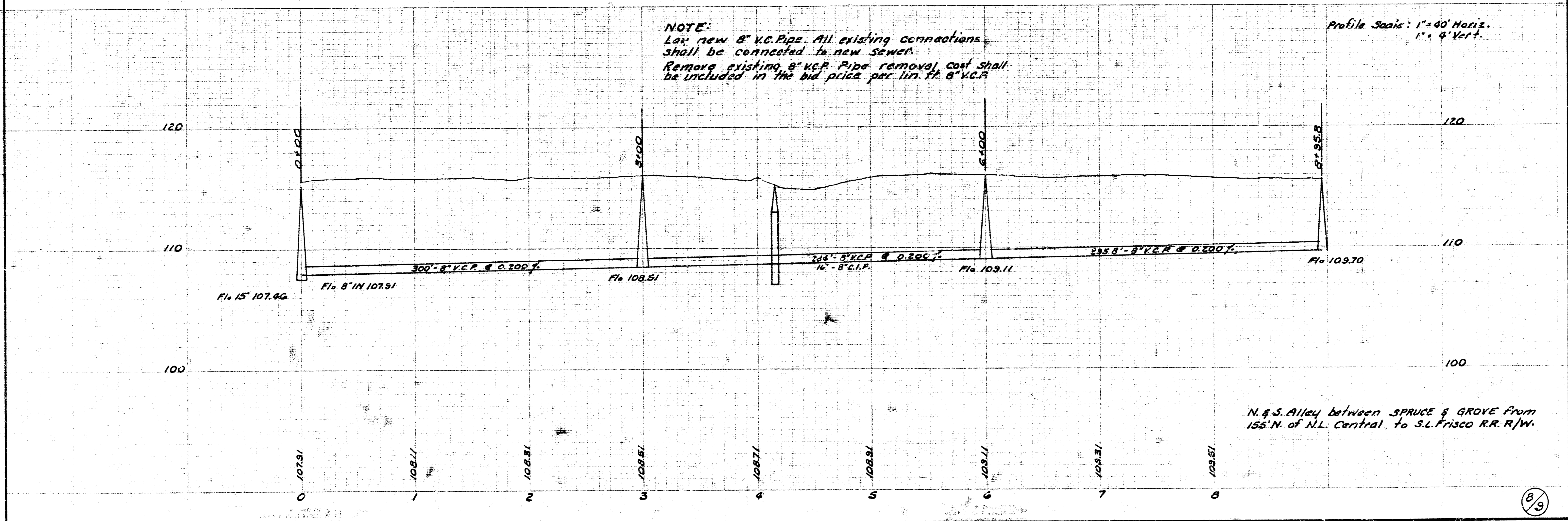
NOTE:
Lay new 8" K.C. Pipe. All existing connections shall be connected to new sewer.
Remove existing 8" K.C.P. Pipe removal cost shall be included in the bid price per lin. ft. 8" K.C.P.

Profile Scale: 1" = 40' Horiz.
1" = 5' Vert.

N. & S. Alley between MADISON & SPRUCE from 155' N of N.L. Central to S.L. Frisco R.R. R/W



S.W. O.C.C. 11-1-30
 Plan 46.41
 Ch. Chicago



N & S. Alley between SPRUCE & GROVE From
 155' N. of N.L. Central to S.L. Frisco R.R. R/W.

(8/9)