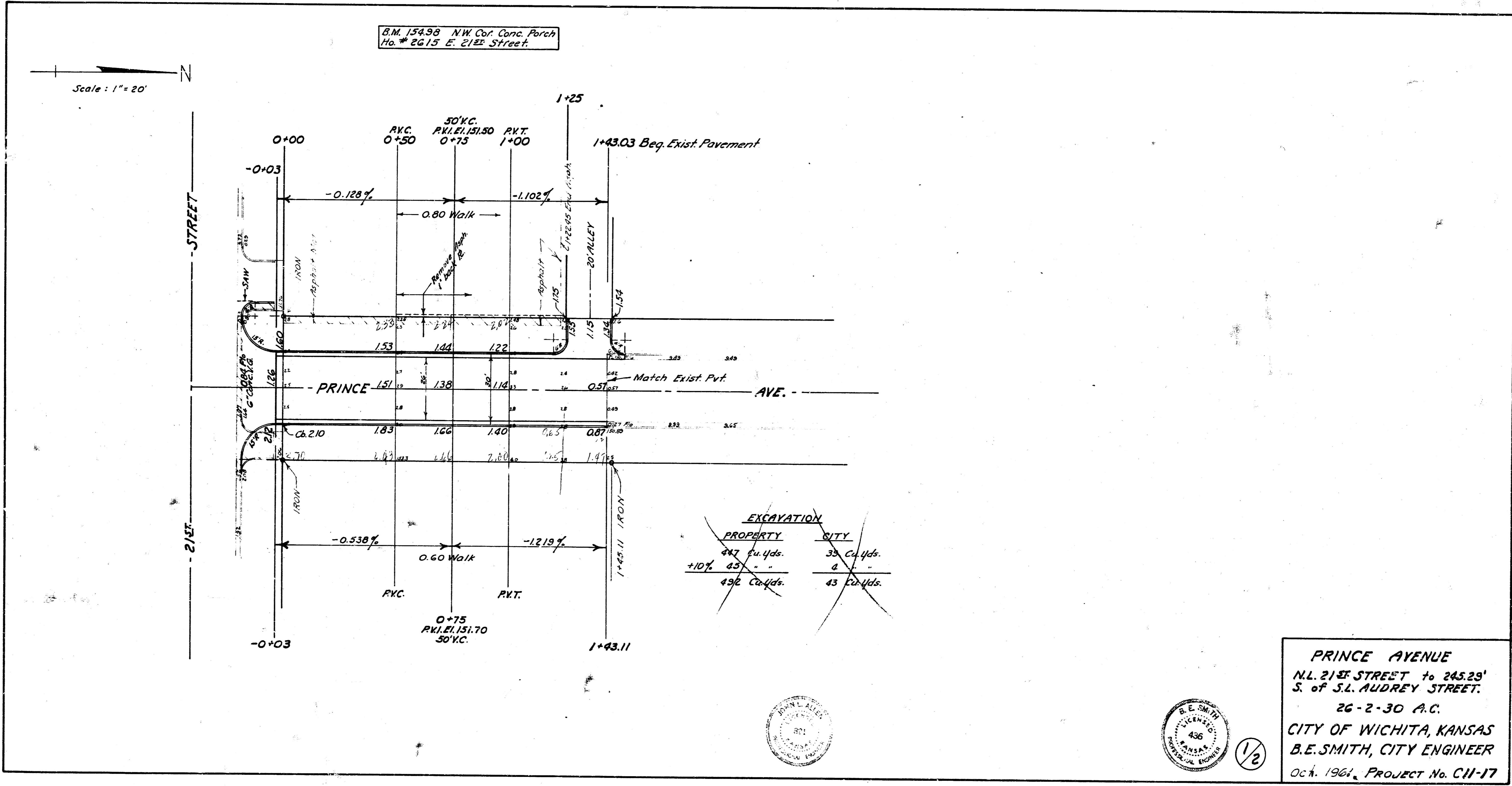


Survey No. 1057
 Date 11/1/61
 City of Wichita
 B.E. Smith



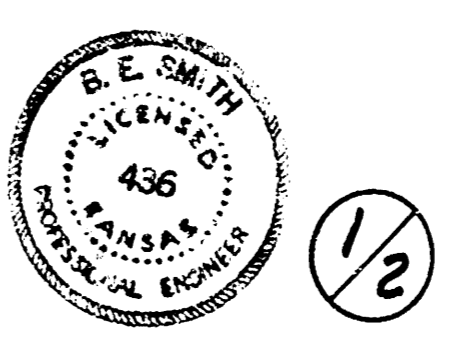
B.M. 154.98 NW Cor. Conc. Patch
 Ho. # 2615 E. 21st Street.

Scale: 1" = 20'

EXCAVATION

PROPERTY	CITY
247 Cu Yds.	33 Cu Yds.
+10% 45' - -	2 - -
496 Cu Yds.	43 Cu Yds.

PRINCE AVENUE
 N.L. 21st STREET to 245.23'
 S. of S.L. AUDREY STREET.
 26-2-30 A.C.
 CITY OF WICHITA, KANSAS
 B.E. SMITH, CITY ENGINEER
 Oct. 1961, PROJECT No. CII-17



1/2