

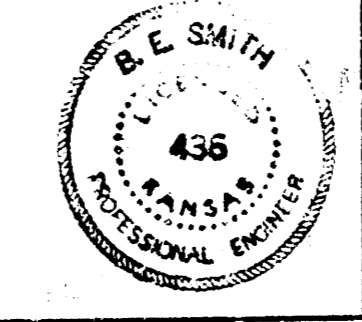
Survey Stamp
 B.E. Smith
 City Engineer
 Checked (S)

NOTE - Taps on W.N. Side of Range Rd. is sta. on W. of line
 Taps on E. of S. side of Range Road is sta. on E. of S. of line
 X-sections are sta. on E. as shown.

B.M. - 23.78 "M" in Mueller P.P. Approx. 100' So. of S. Fork of E.S. Range Rd.
 B.M. - 21.08 "M" in Mueller P.P. NW Cor. Cheyenne & Range Rd.
 B.M. - 21.50 "M" in Mueller P.P. NW Cor. S. Fork of Range Rd.
 B.M. - 20.25 "M" in Mueller P.P. NW Cor. Hillside & Range Rd.

Total Excav.

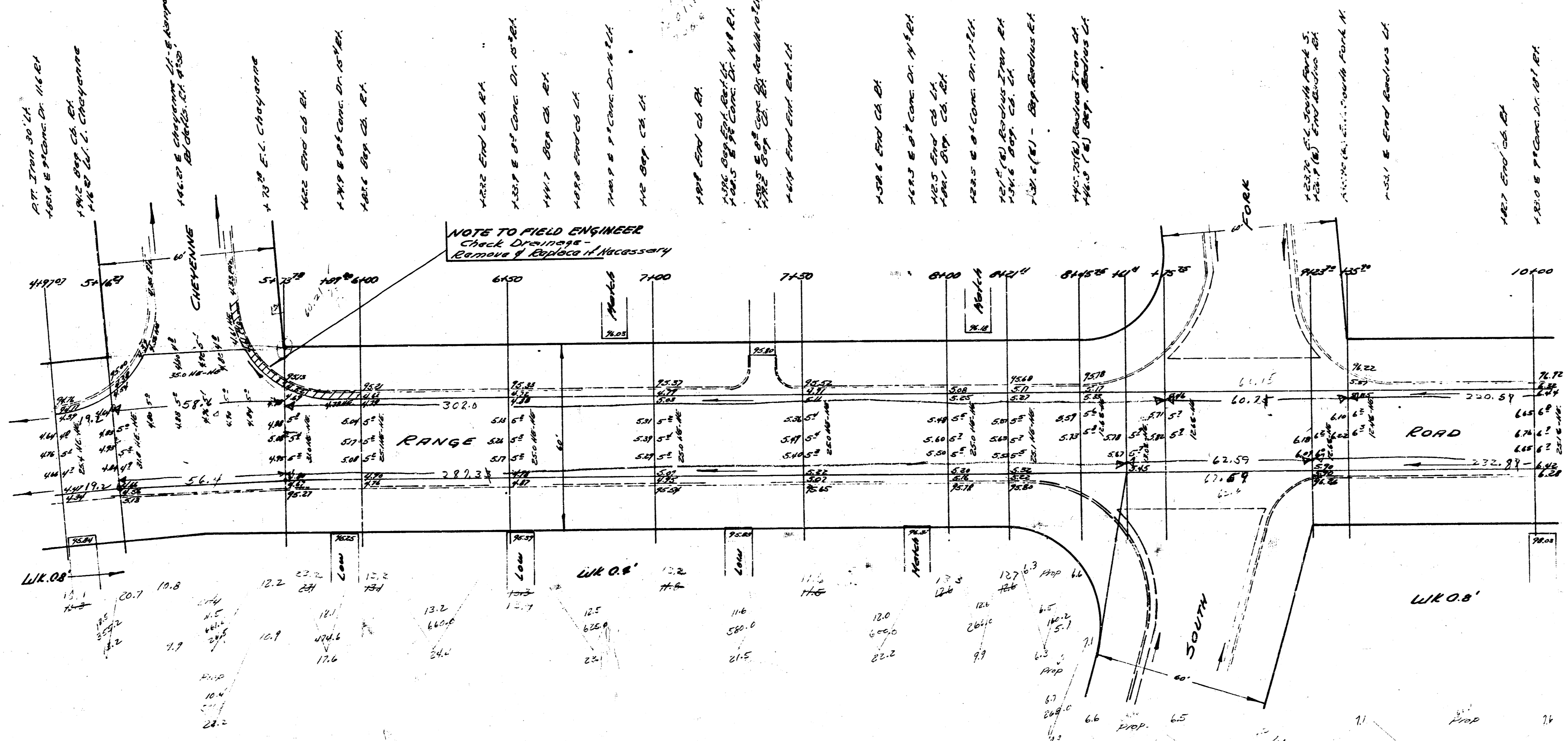
cut	fill	dmp	cut fill
103.2	115.3	74.8	228.5 cu. yds.
111.2	115.3		



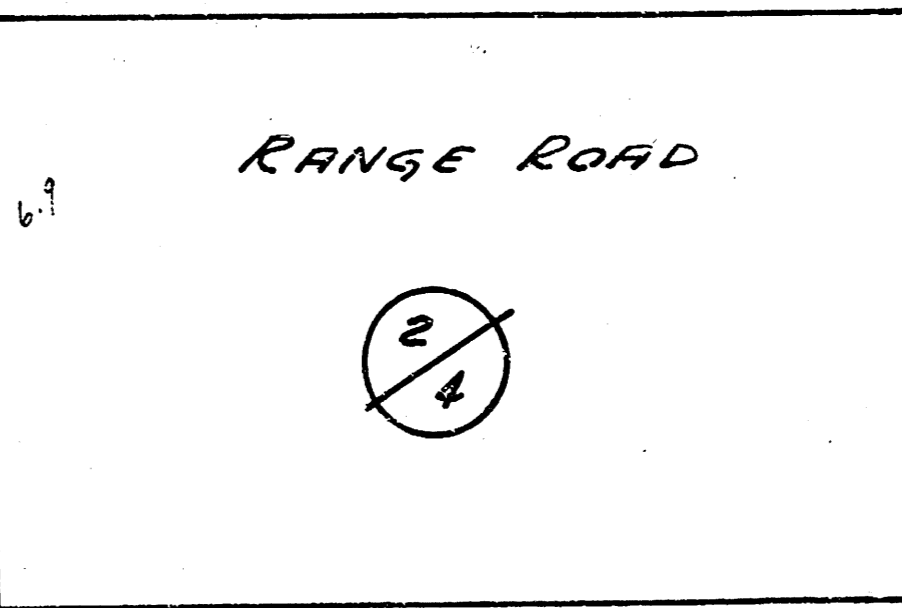
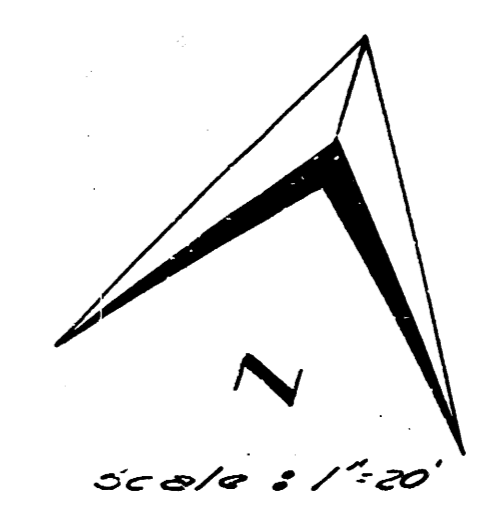
RANGE ROAD
 127' No. N.E. Wessell to W. Hillside
 26' CONC.
 City of Wichita, Kans.
 B. E. Smith City Engineer
 July 1953 Proj. No. 12-265

1/4

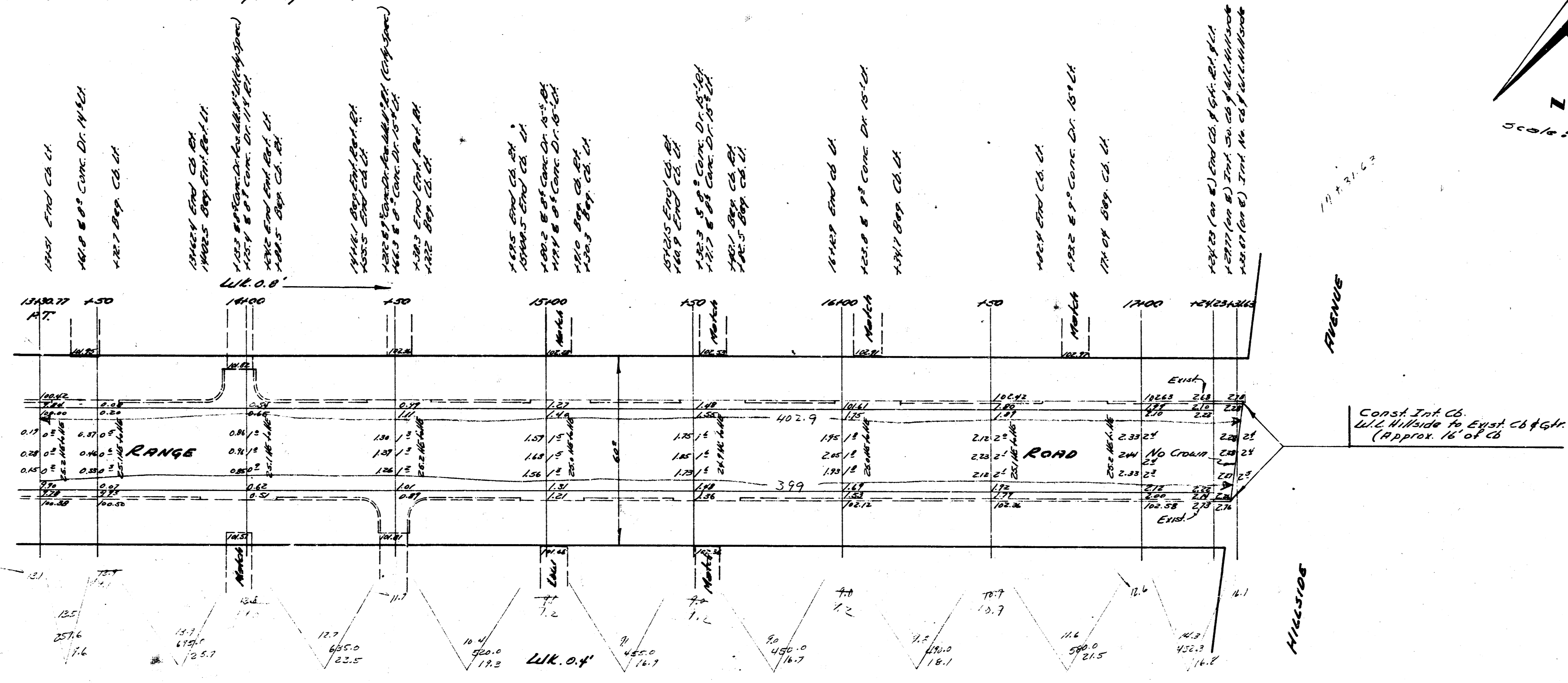
B.M. 7125 N.W. 1/4 Mueller F.P. N.W. 1/4 Cor. Cheyenne & Range Rd.
 B.M. 7125 N.W. 1/4 Mueller F.P. N.W. 1/4 Cor. So. Fork & Range Rd.



NOTE TO FIELD ENGINEER
 Check Drainage
 Remove & Replace if Necessary



B.M. - 10275 'M' in Mueller F.R. NW Cor. Hillside & Range Road



RANGE ROAD

4/4