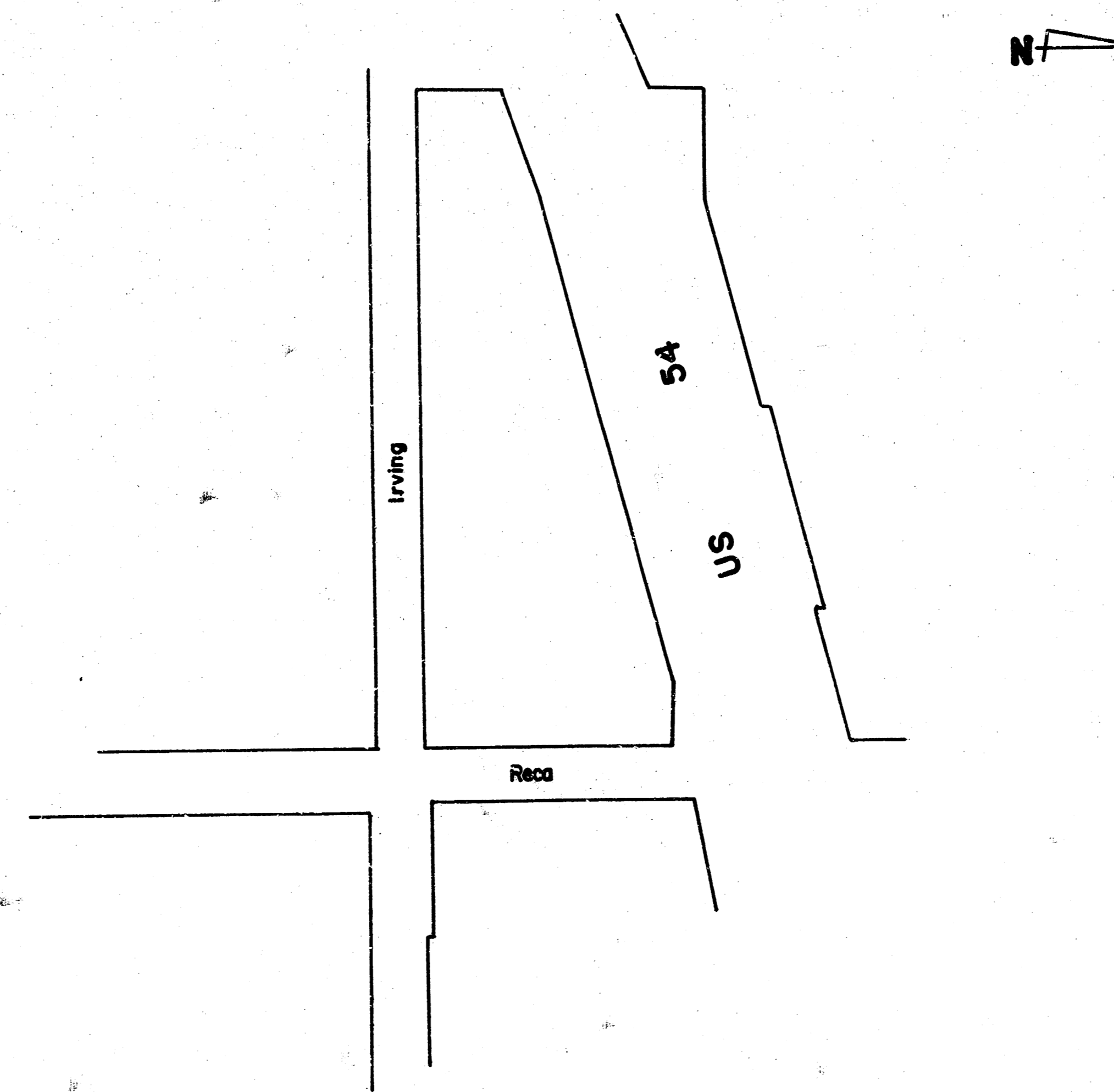
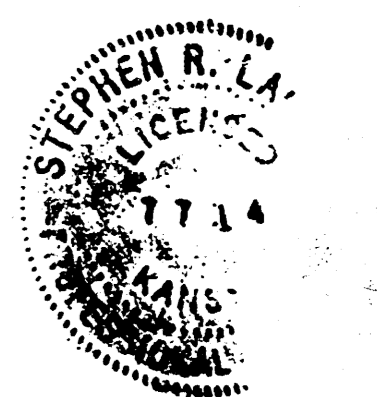


RECA
from NL Irving to SL Kellogg

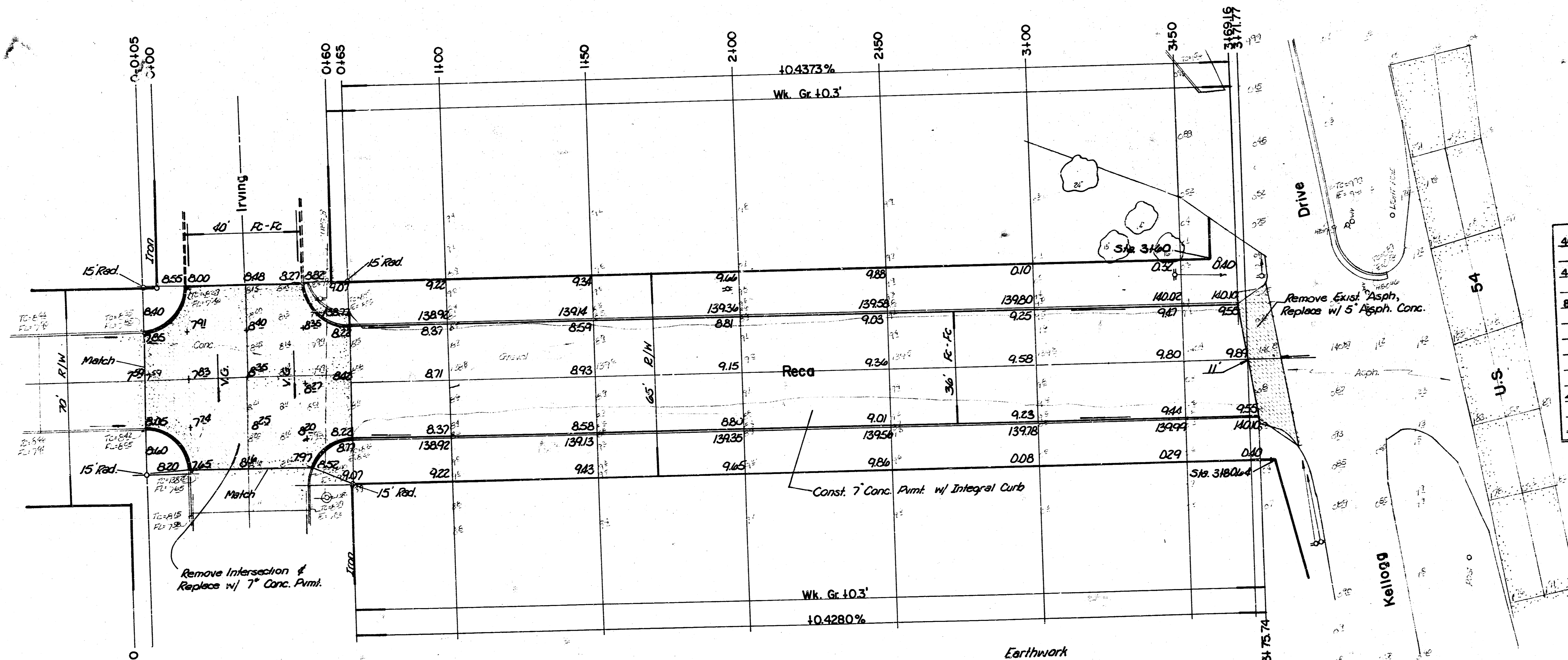


Department Engineering
City of Wichita , Kansas
R. W. Bruggeman Dir. Engineering / City Engineer
Proj. no 472-76-245-81046-000-000-001



BM 138.20 "□" Top S. curb Irving, end of rad. E.L. Recca.
 BL is 30' E. of and parallel to WL Recca.

scale: 1"=20'





1/4

14