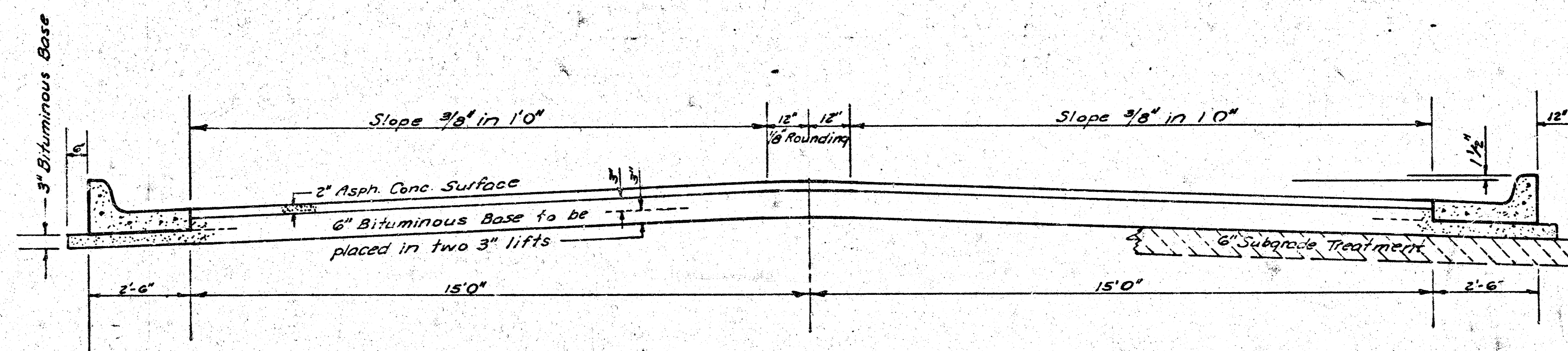


RECA AVE
 N.L. 54 Highway-S.L. McCormick
 472-76-245-80619-000-000-001



TYPICAL SECTION

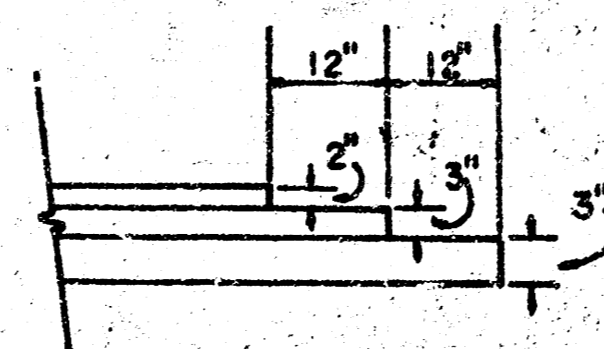
35' ASPHALTIC CONCRETE PAVEMENT WITH BITUMINOUS BASE

A TACK COAT OF EMULSIFIED ASPHALT (SS-1H) SHALL BE APPLIED AT AN APPROXIMATE RATE 0.05 GALLONS PER SQ YD BETWEEN LIFTS OF ASPHALTIC MATERIALS WHEN ORDERED BY THE ENGINEER. TACK COAT WILL NOT BE PAID FOR DIRECTLY AND SHALL BE CONSIDERED AS SUBSIDIARY TO PRICE BID FOR ASPHALTIC PAVEMENT.

BITUMINOUS BASE AND ASPHALTIC CONCRETE WEARING SURFACE SHALL BE PLACED WITH A LAYDOWN MACHINE HAVING AUTOMATIC ELECTRONIC CONTROLS FOR CROWN AND GRADE. CONSTRUCTION JOINTS IN EACH LIFT SHALL BE STAGGERED A MINIMUM DISTANCE OF 1' WITH JOINTS IN PRECEDING LIFTS AND PLACED SUCH THAT A JOINT WILL BE CONSTRUCTED ON THE CENTERLINE IN THE TOP LIFT.

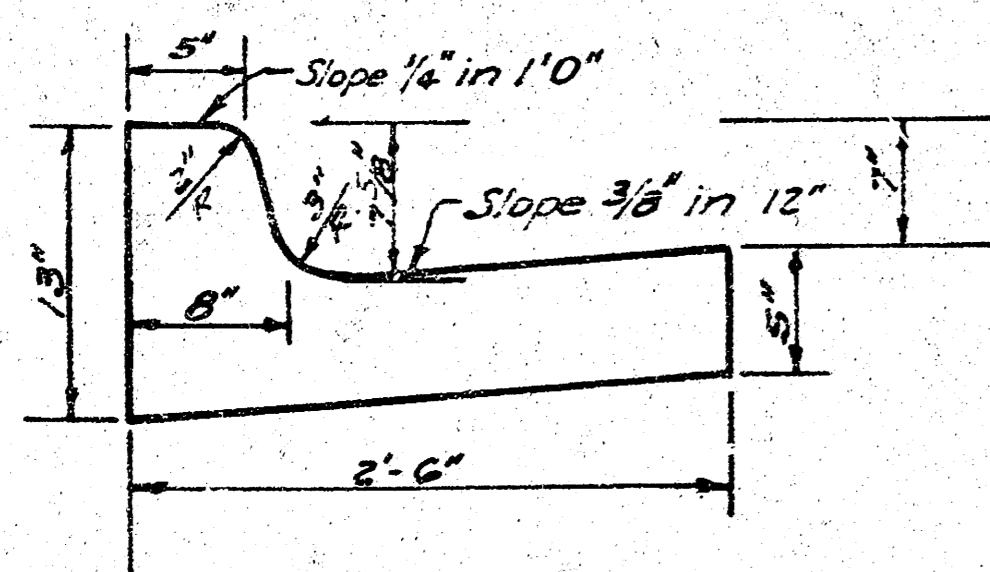
The A.C. Pavement between the comb. curb & gutter shall be paid as Sq.Yds. 8" A.C. Pavement (6" Bituminous Base).
 The Bituminous Base under the comb. curb & gutter shall be paid as Sq.Yds. 3" Bituminous Base.

DETAIL OF TRANSVERSE CONSTRUCTION JOINTS

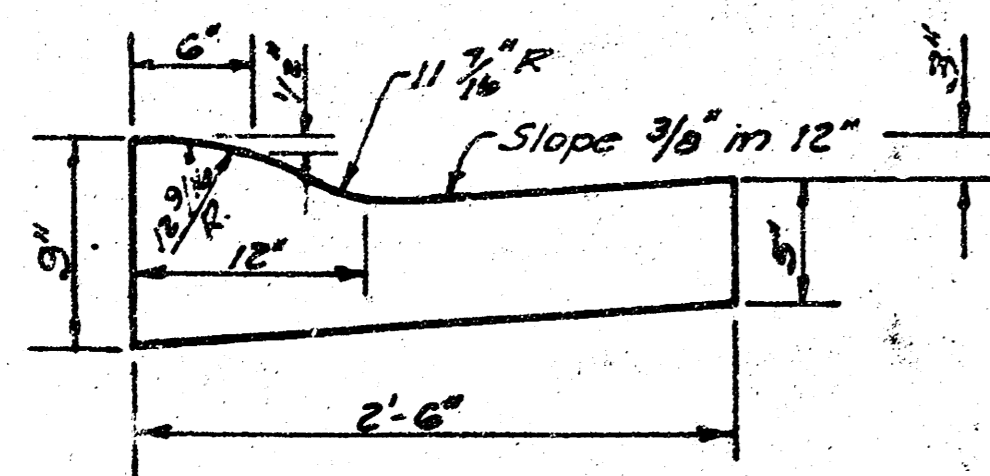


TRANSVERSE CONSTRUCTION JOINTS SHALL BE CONSTRUCTED IN FLEXIBLE BASE PAVEMENTS AT LOCATIONS WHERE PAVEMENT TEMPORARILY ENDS TO FACILITATE FUTURE PAVEMENT CONSTRUCTION AS SHOWN BY DETAIL. THE COST OF CONSTRUCTING THE TRANSVERSE CONSTRUCTION JOINTS SHALL NOT BE MEASURED OR PAID FOR DIRECTLY BUT SHALL BE INCLUDED IN THE BID PRICE FOR SQUARE YARDS OF ASPHALTIC CONCRETE PAVEMENT.

COMBINED CURB & GUTTER



ROLL TYPE CURB & GUTTER



CITY OF WICHITA KANSAS

DEPARTMENT of PUBLIC WORKS - Engineering
 Division

R. W. LINN CITY ENGINEER

DATE _____ Proj No. _____

1/3

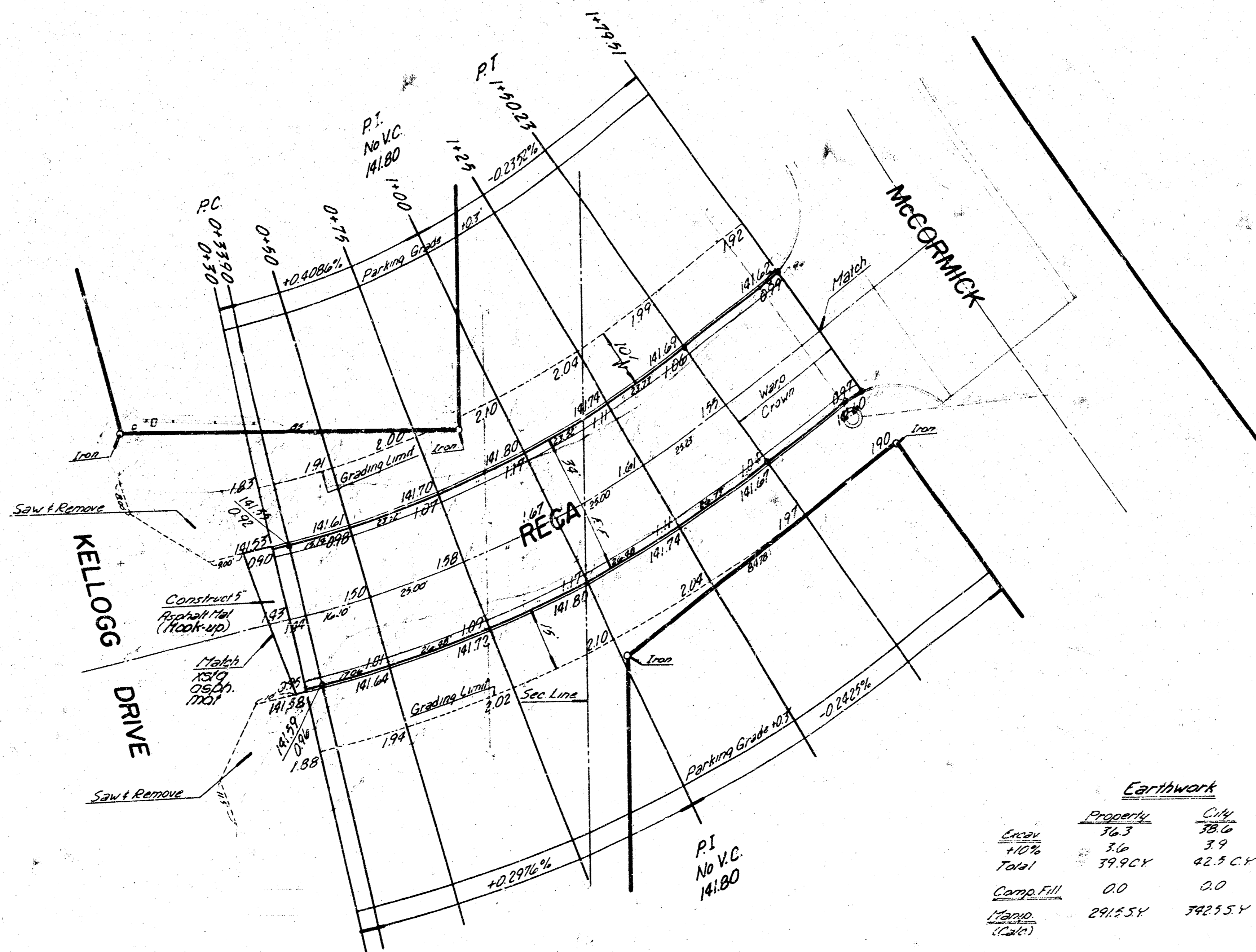
B.M. 143.87 R.R. Spk., S.S. Power Pole at N.E. Corner
 Evergreen, Robin Rd + Topaz.
 @ 15' Rec'd

Scale 1" = 20'

$\Delta = 23^{\circ} 16' R = 286.48' T = 18.98' L = 116.33' LC = 117.53'$

STA	ARC	CHORD	DEFLECTION	DEFLECTION	TOTAL DEFLECTION
0+33.90	-	-	-	-	0' 00" 00"
0+50	16.10	14.69	17.80	1' 36" 36"	1' 36" 36"
0+75	25.00	22.81	27.17	2' 30" 00"	2' 30" 00"
1+00	25.00	"	"	2' 36" 36"	4' 36" 36"
1+25	25.00	22.81	27.17	2' 30" 00"	7' 06" 36"
1+50.23	25.23	23.02	27.42	2' 31" 28"	11' 37" 58"

Def'n = 0.0000 (Tan 1/2)



Earthwork

	Property	City
Excav	36.3	38.0
Fill	3.6	3.9
Total	39.9 CY	42.3 CY
Comp. Fill	0.0	0.0
Grand Total	291.5 Y	342.3 Y

SUB-GRADE
 TYPE OF SUB-GRADE TREATMENT SHALL BE DETERMINED BY THE FIELD ENGINEER. SUB-GRADE TREATMENT MAY CONSIST OF LIME TREATMENT, CEMENT TREATMENT, SUB-GRADE MODIFICATION, OR ANY COMBINATION OF THESE.