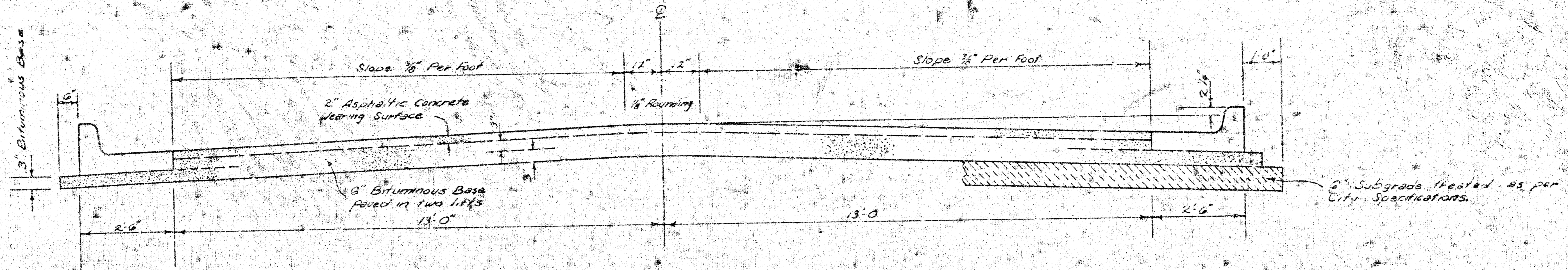


RED BUD LANE
S. L. BLUEBIRD - S. L. BENJAMIN
DAKS576050



TYPICAL SECTION

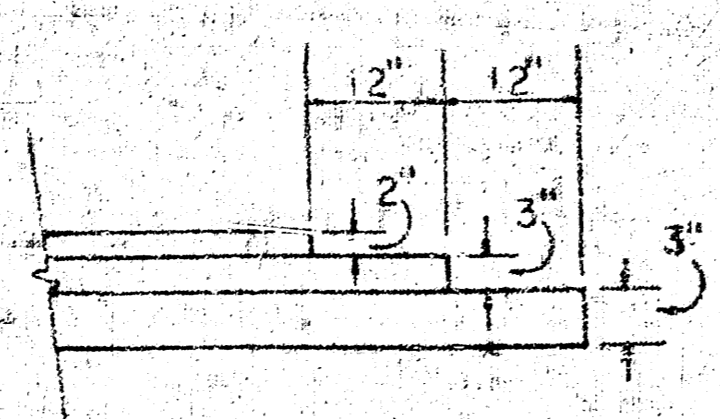
3' ASPHALTIC CONCRETE PAVEMENT WITH BITUMINOUS BASE

The A.C. pavement between the Comb. Curb & gutter shall be paid as 3" Yds. B" A.C. Pavement (3" Bituminous Base). The Bituminous Base under the Comb. Curb & gutter shall be paid as 3" Yds. 3" Bituminous Base.

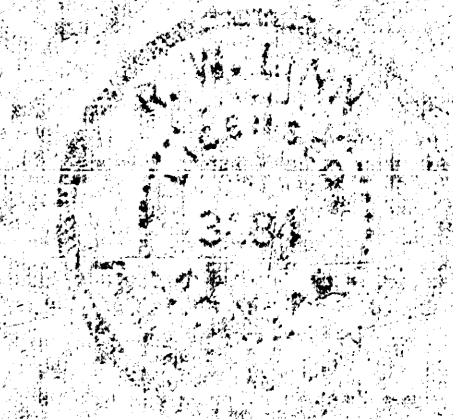
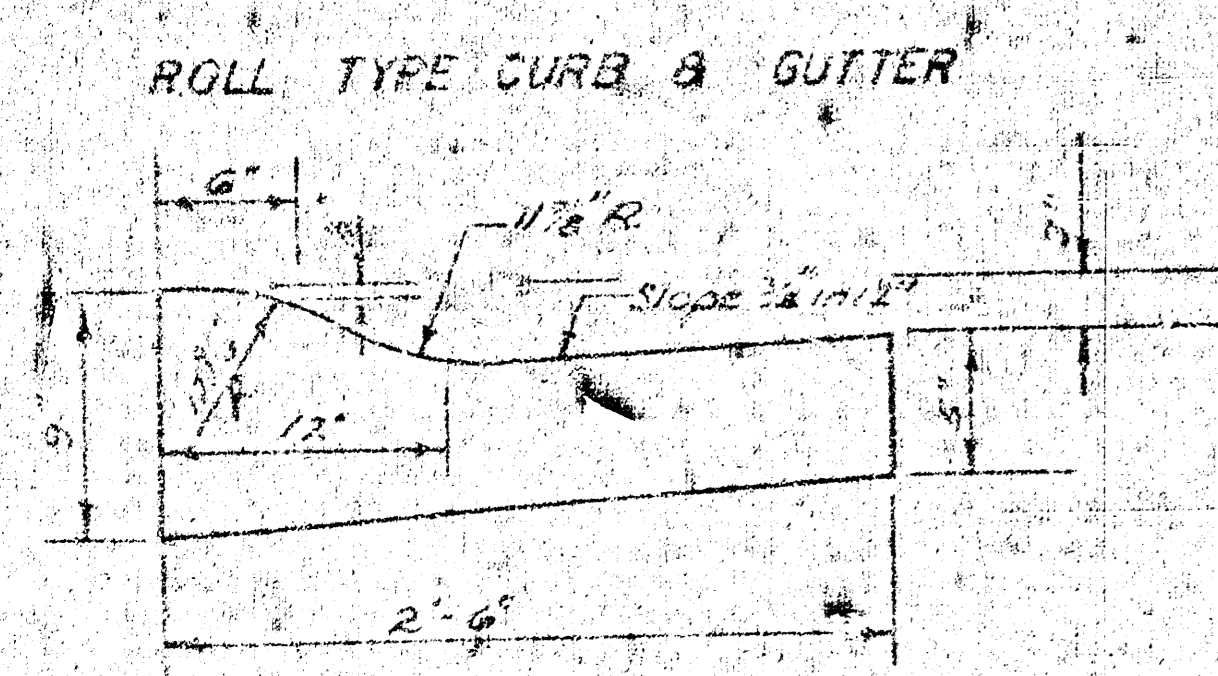
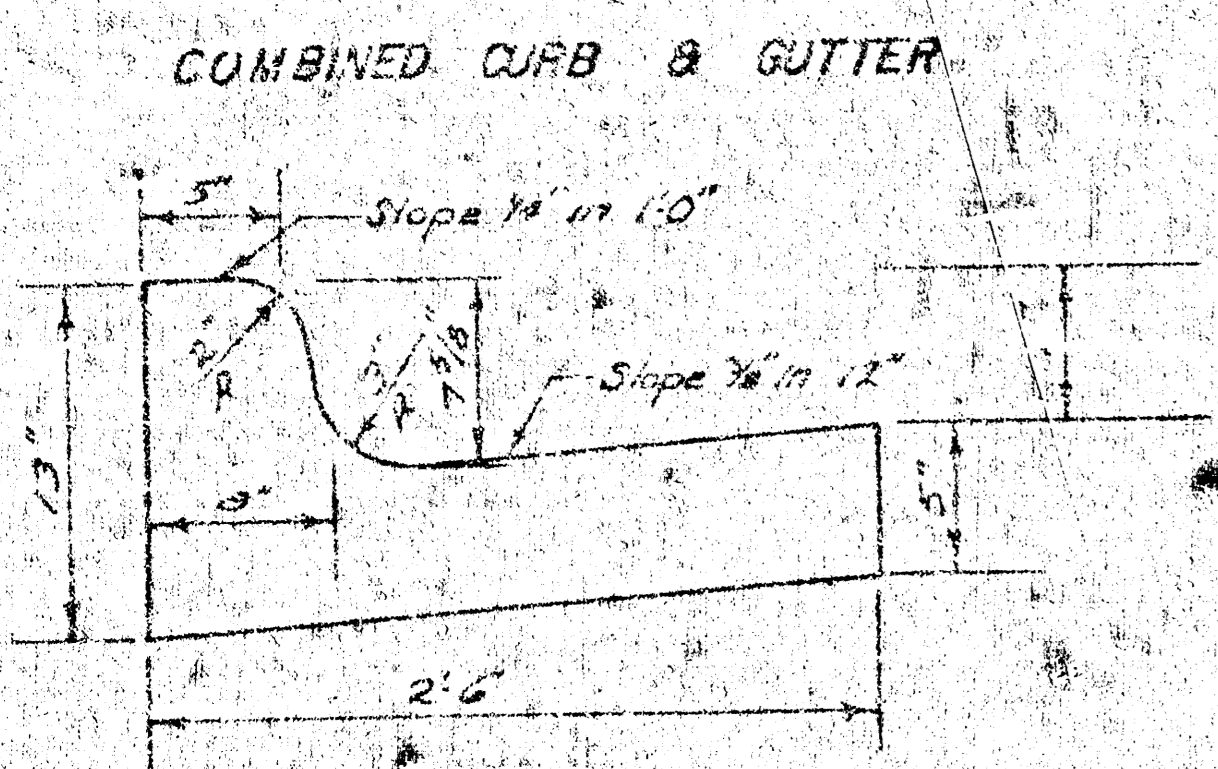
A TACK COAT OF EMULSIFIED ASPHALT (SS-IH) SHALL BE APPLIED AT AN APPROXIMATE RATE OF 0.15 GALLONS PER SQ. YD. BETWEEN LIFTS OF ASPHALTIC MATERIALS WHEN ORDERED BY THE ENGINEER. TACK COAT WILL NOT BE PAID FOR. TACK COAT SHALL BE CONSIDERED AS SUBSIDIARY TO PRICE BID FOR ASPHALTIC PAVEMENT.

THE ASPHALTIC CONCRETE WEARING SURFACE SHALL BE PLACED WITH A LAYDOWN MACHINE HAVING ELECTRONIC CONTROLS FOR CROWN AND GRADE. CONSTRUCTION JOINTS IN EACH LIFT SHALL BE PLACED AT A MINIMUM DISTANCE OF 1' WITH JOINTS IN PRECEDING LIFT AND SUCH THAT A JOINT WILL BE CONSTRUCTED ON THE PAVEMENT CENTERLINE IN THE TOP LIFT.

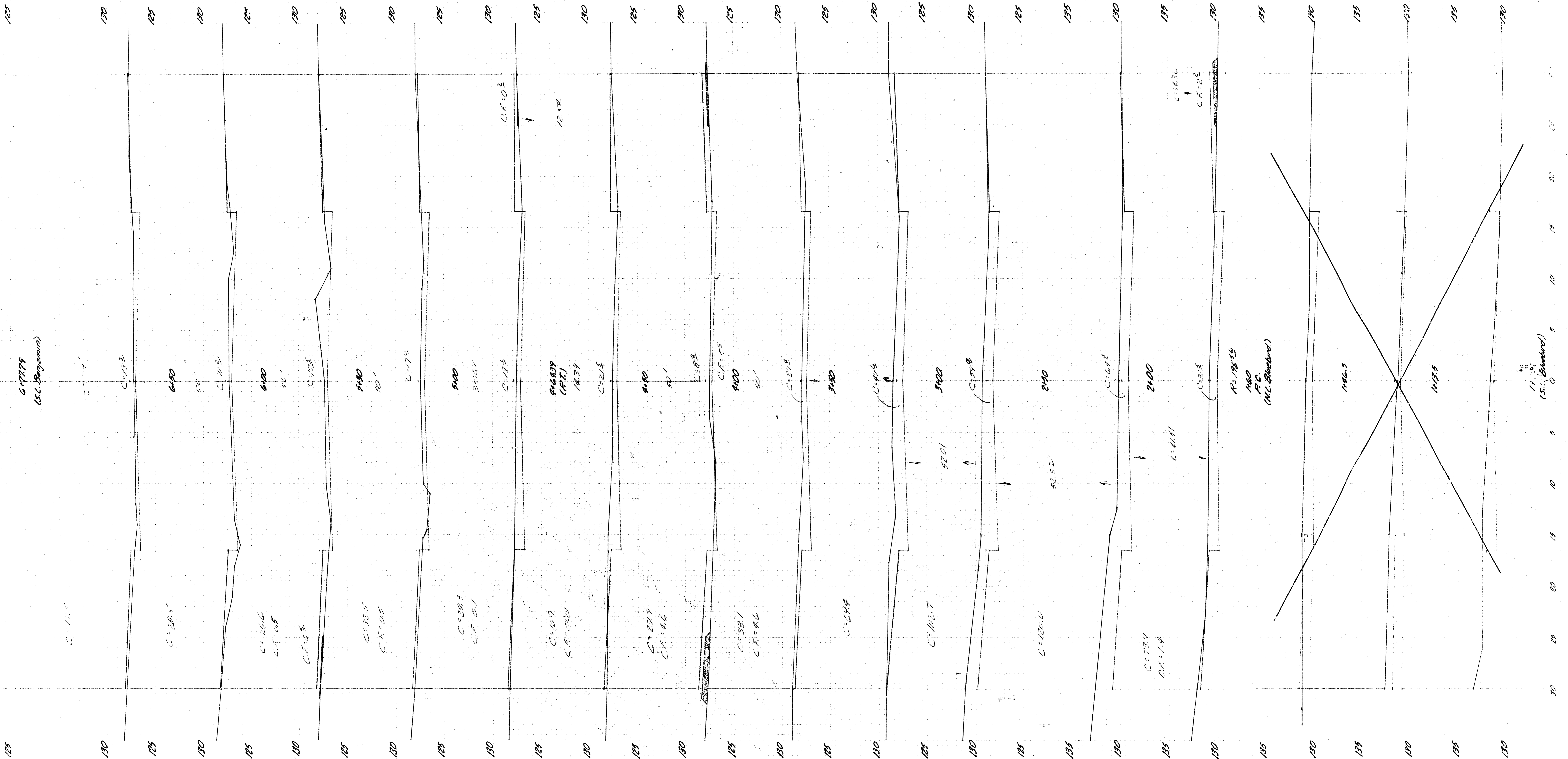
DETAIL OF TRANSVERSE CONSTRUCTION JOINTS



TRANSVERSE CONSTRUCTION JOINTS SHALL BE CONSTRUCTED IN FLEXIBLE BASE PAVEMENTS AT LOCATIONS WHERE PAVEMENT TEMPORARILY ENDS TO FACILITATE FUTURE PAVEMENT CONSTRUCTION AS SHOWN BY DETAIL. THE COST OF CONSTRUCTING THE TRANSVERSE CONSTRUCTION JOINTS SHALL NOT BE MEASURED OR PAID FOR DIRECTLY BUT SHALL BE INCLUDED IN THE BID PRICE FOR SQUARE YARDS OF ASPHALTIC CONCRETE PAVEMENT.



CITY OF WICHITA, KANSAS
DEPARTMENT OF PUBLIC WORKS - ENGINEERING
R. W. LINN CITY ENGINEER
DATE: 11-1-1983 PROJ. NO. DAKS576050



6-17779
(S.C. Bergmann)

Redund
N.C. Bergmann - S.C. Bergmann
0-1153760-30