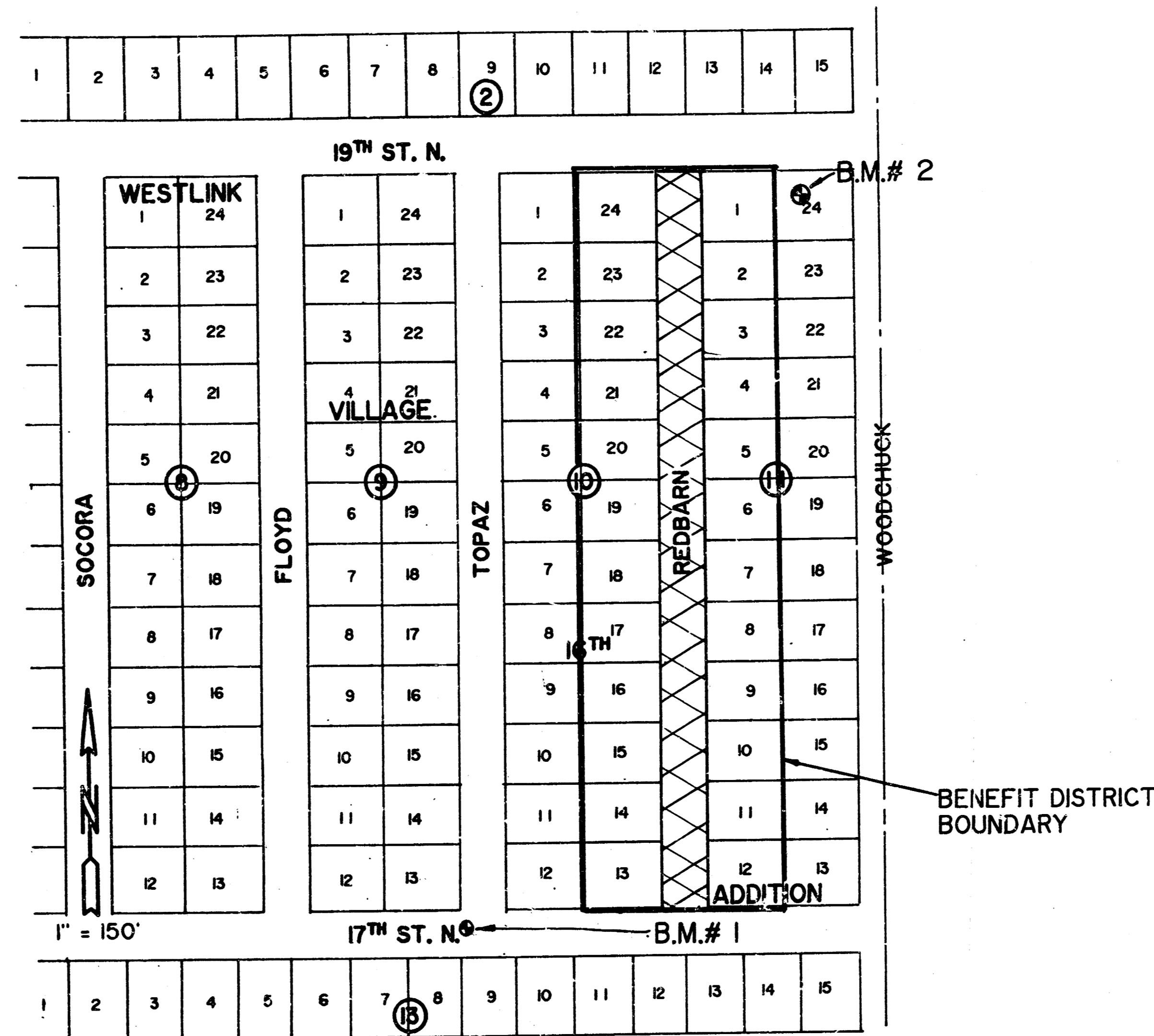


CITY OF WICHITA, KANSAS
STREET IMPROVEMENTS
WESTLINK VILLAGE 16TH ADDITION
REDBARN FROM N.L. 17TH STREET NORTH TO THE S.L. 19TH STREET NORTH
PROJECT NO. 472-76-245-80742-000-000-001

INDEX #: 607689



LOCATION MAP

GENERAL NOTES:

1. Existing utilities and their location, as shown on the plans, represent the best information obtainable for design. The Contractor will be required to work around existing utilities within the Right-of-Way which do not conflict with proposed construction.
2. A saw cut of at least one-half the depth of existing surface courses or one-fourth the depth of existing total pavement thickness shall be provided at locations where proposed construction abuts an existing surface course or pavement for which partial removal of that surface or pavement is required. Such saw cuts will not be paid directly and this cost shall be considered subsidiary to the removal of the surface or pavement.
3. Rubble from the removal of miscellaneous structures and excess excavation which is to be wasted shall be disposed of on sites to be provided by the Contractor. These sites shall be approved by the Engineer as to suitability, appearance and site location. Locations that, in the opinion of the Engineer, will leave an unsightly appearance will not be approved.
4. Limits of earthwork shall match existing ground elevations at the right-of-way line unless otherwise noted on the plans with a new finished grade elevation. When a new finished grade elevation is shown, the earthwork shall extend one foot beyond the right-of-way line and then slope up or down using permissible slopes to match the existing ground surface.
5. The Contractor shall be responsible for preserving property irons. The Contractor will be required to re-establish any property irons which are damaged or destroyed by its construction operations. Such irons shall be re-established by a licensed land surveyor or a licensed professional engineer in accordance with state laws.
6. The City of Wichita's Sewer Maintenance Division of the Department of Water and Water Pollution Control has televised sewers within the limits of the project and have found no defects requiring repairs. The Division shall be notified and afforded the opportunity to re-televise sewer lines after subgrade work has been completed and prior to pavement construction to determine if such sewer lines have been damaged by the Contractor's operations. Damaged sewer lines will be repaired by the Contractor, as directed by the Engineer, at the Contractor's expense. Television logs are available for inspection by the Contractor during normal office hours at Sewer Maintenance Division's office at City Hall.

BENCH MARKS:

- B.M. # 1: Chisled 'D' at the northeast corner of inlet located at the northwest corner of intersection of 17th Street N. & Topaz. EL.=159.83
- B.M. # 2: R/R upike in a 30" Elm tree; 197 feet east and 49 feet south of intersection of 19th Street N. and Redbarn. EL.= 157.77

INDEX :

| | | |
|-------|-----|-----------------------------|
| SHEET | 1 | TITLE SHEET |
| SHEET | 2 | TYPICAL 25' PAVEMENT DETAIL |
| SHEET | 3-4 | PLAN SHEETS |
| SHEET | 5-8 | CROSS-SECTION SHEETS |

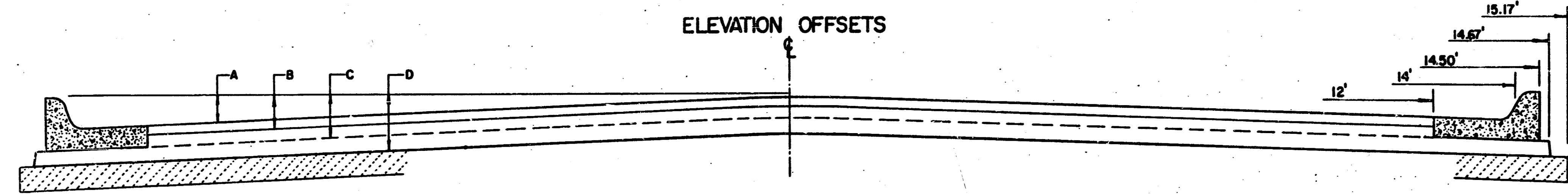
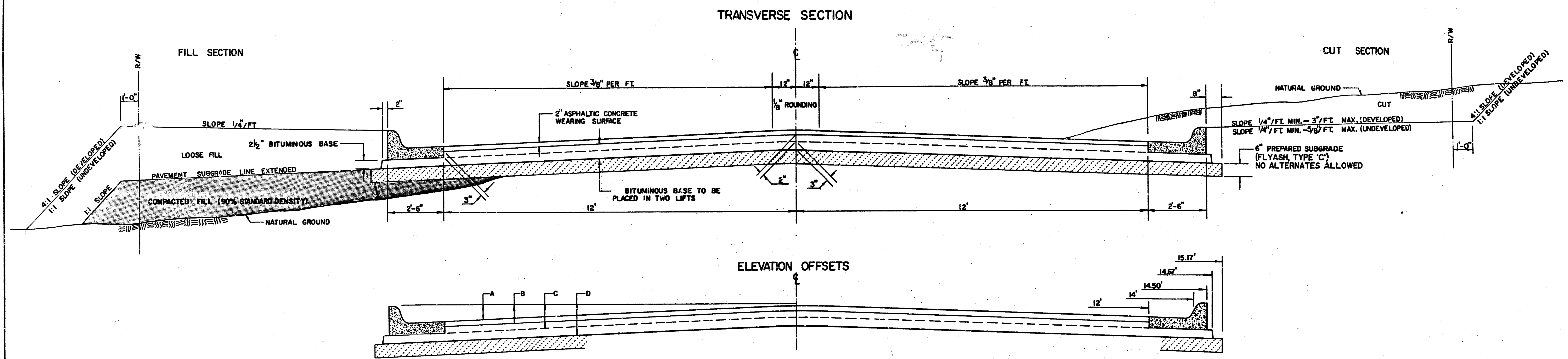
MICHAEL E. LINDEBAK, P.E., CITY ENGINEER



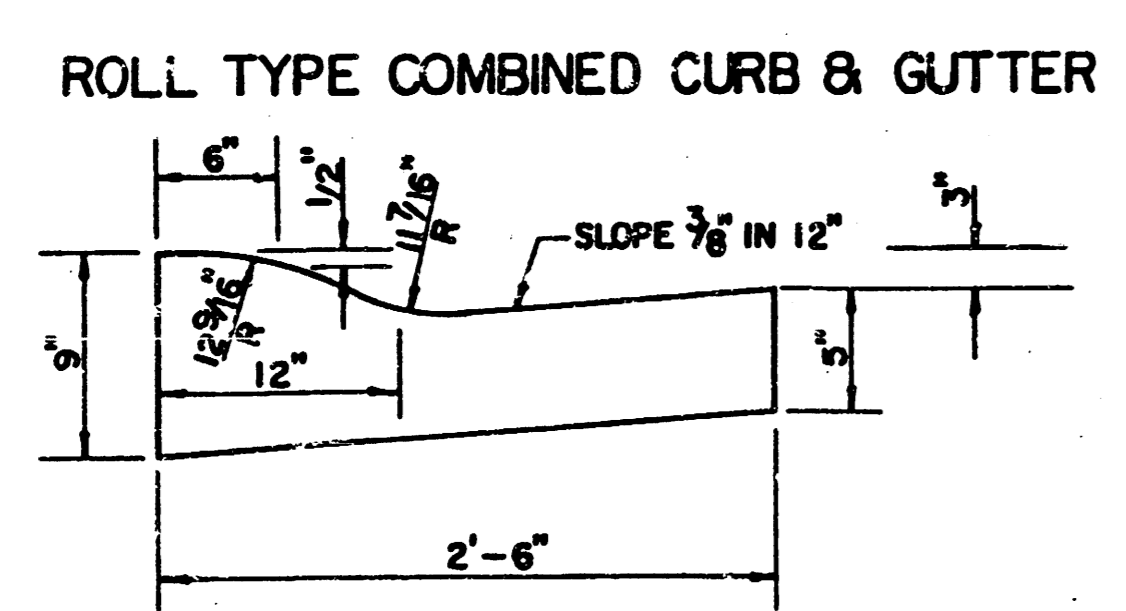
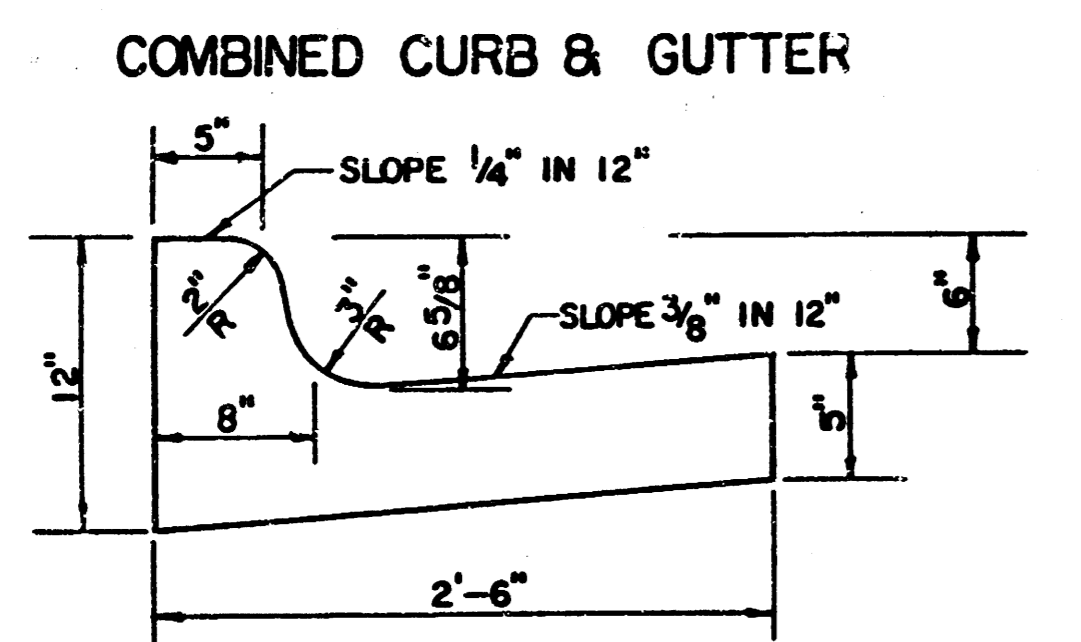
| | | | |
|--|--|--------------|--------------------------|
| SCALE: | | APPROVED BY: | DRAWN BY: M.W. |
| DATE: 3-89 | | B.K. | REVISED |
| MUNICIPAL ENGINEERS Civil Engineers & Land Surveyors 304 Loren, Suite 201 Wichita, Kansas 67211 | | | DRAWING NUMBER 1 OF 8 |

FILMED FROM THE BEST AVAILABLE COPY

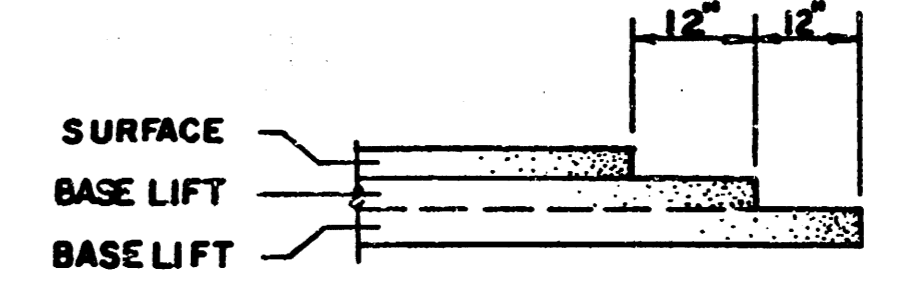
TYPICAL 29' PAVEMENT DETAILS



| | DISTANCE FROM CENTERLINE (LT. & RT.) | | | | | | | | | | | | |
|---|--------------------------------------|------|------|------|------|------|------|------|------|-------|--------|--------|--|
| | 0' | 2' | 4' | 6' | 7' | 8' | 10' | 12' | 14' | 14.5' | 14.67' | 15.17' | |
| A: TOP OF CURBS TO TOP OF SURFACE LIFT | 0.13 | 0.18 | 0.24 | 0.30 | 0.33 | 0.36 | 0.43 | 0.49 | — | — | — | — | |
| B: TOP OF CURBS TO TOP OF UPPER BASE LIFT | 0.30 | 0.35 | 0.41 | 0.47 | 0.50 | 0.53 | 0.60 | 0.66 | — | — | — | — | |
| C: TOP OF CURBS TO TOP OF LOWER BASE LIFT | 0.47 | 0.52 | 0.60 | 0.68 | 0.71 | 0.75 | 0.83 | 0.90 | 0.98 | 1.00 | 1.01 | — | |
| D: TOP OF CURBS TO TOP OF SUBGRADE | 0.72 | 0.77 | 0.84 | 0.91 | 0.94 | 0.98 | 1.05 | 1.12 | 1.19 | 1.21 | 1.21 | 1.23 | |



TRANSVERSE CONSTRUCTION JOINTS



TRANSVERSE CONSTRUCTION JOINTS SHALL BE CONSTRUCTED IN FLEXIBLE BASE PAVEMENTS AT LOCATIONS WHERE PAVEMENT JOINS EXISTING FLEXIBLE BASE PAVEMENT AS SHOWN BY THE DETAIL. ALL COSTS ASSOCIATED WITH THE CONSTRUCTION OF THE TRANSVERSE JOINT SHALL BE INCLUDED IN THE BID PRICE FOR SQUARE YARDS 7" ASPHALTIC CONCRETE (5" BITUMINOUS BASE).

GENERAL NOTES

- 1) THE ASPHALTIC CONCRETE PAVEMENT BETWEEN THE COMBINED CURB AND GUTTER SHALL BE PAID AS SQUARE YARDS OF 7" ASPHALTIC CONCRETE (5" BITUMINOUS BASE).
- 2) THE BITUMINOUS BASE UNDER AND BEHIND THE COMBINED CURB AND GUTTER SHALL BE PAID AS SQUARE YARDS OF 2 1/2" BITUMINOUS BASE.
- 3) A TACK COAT OF EMULSIFIED ASPHALT (SC-1H OR CSS-1H) SHALL BE APPLIED AT AN APPROXIMATE RATE OF 0.05 GALLONS PER SQUARE YARD BETWEEN EACH LIFT OF ASPHALTIC MATERIAL.
- 4) BITUMINOUS BASE AND ASPHALTIC CONCRETE WEARING SURFACE SHALL BE PLACED WITH A LAYDOWN MACHINE HAVING AUTOMATIC CONTROLS FOR LINE AND GRADE.
- 5) CONSTRUCTION JOINTS IN EACH LIFT SHALL BE STAGGERED A MINIMUM DISTANCE OF ONE (1) FOOT FROM JOINTS IN PRECEDING LIFTS AND PLACED SU THAT A JOINT WILL BE CONSTRUCTED ON THE CENTERLINE OF THE TOP LIFT.
- 6) CONTRACTOR TO BID ONLY ONE SUBGRADE TREATMENT ALTERNATE WHEN ALTERNATES ARE PROVIDED IN THE PROPOSAL AND CONTRACT. THE ALTERNATE CHOSEN BY THE SUCCESSFUL BIDDER SHALL BE USED IN CONSTRUCTING THIS PROJECT.

7 INCH RESIDENTIAL ASPHALTIC CONCRETE PAVEMENT WITH 5 INCH BITUMINOUS BASE
CITY OF WICHITA, KANSAS
 PROJECT NUMBER
 472-76-245-00742-000-000-001

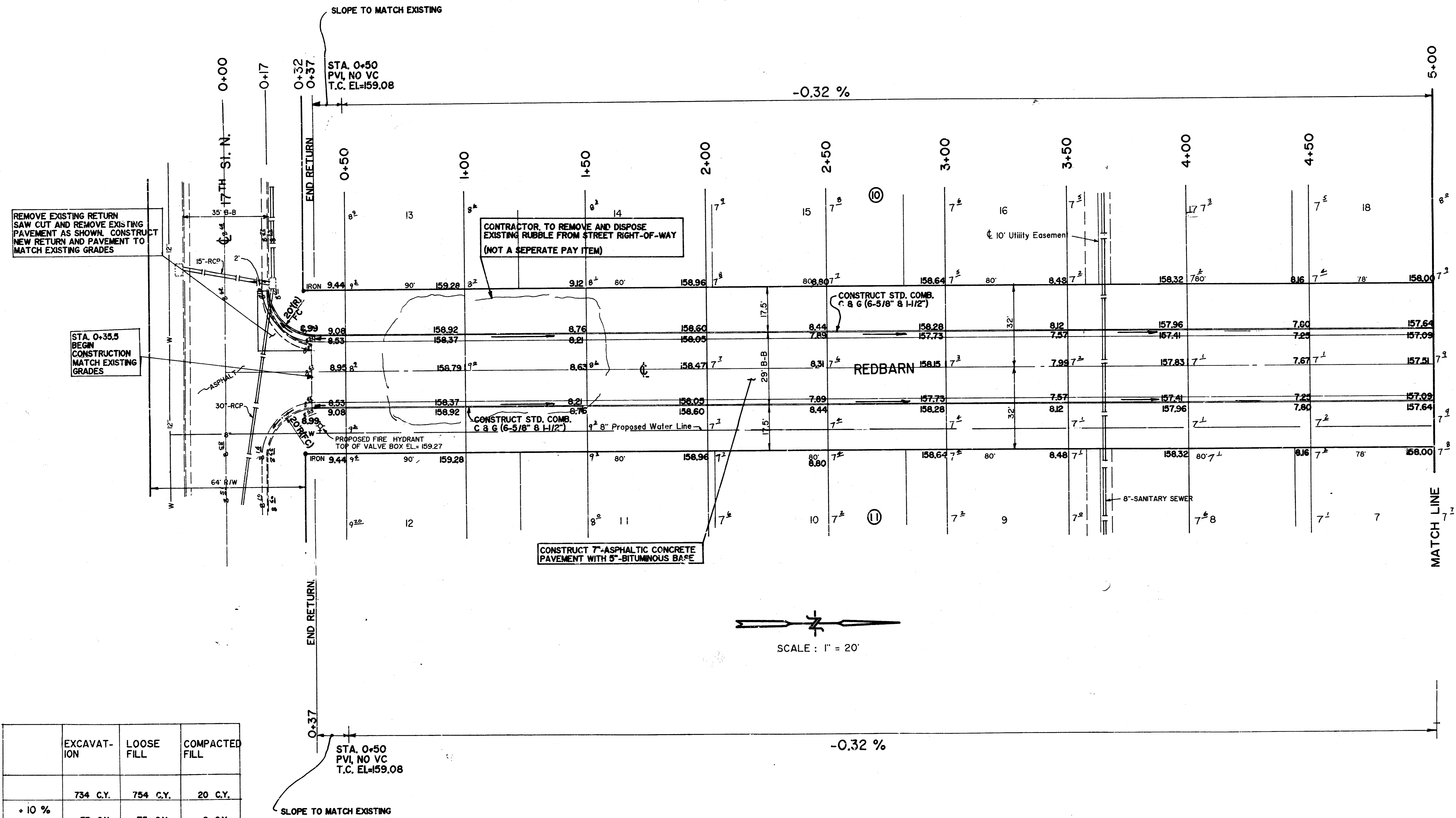
10 1 5 4

FILMED FROM THE BEST AVAILABLE COPY

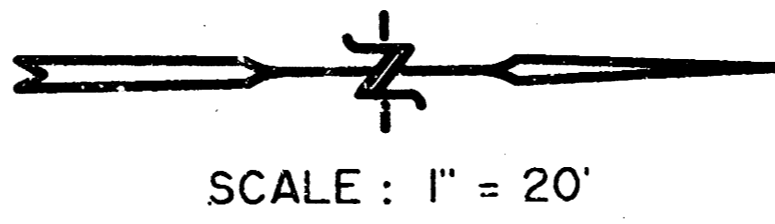
ADJUSTMENTS

| TYPE | STA. | OFFSET | EXISTING ELEVATION | ADJUST TO ELEVATION |
|--------------|------|---------|--------------------|---------------------|
| WATER VALVE | 0+37 | 22' RT. | * | 159.27 |
| FIRE HYDRANT | 0+51 | 20' RT. | * | 159.54 (BURY LINE) |
| WATER VALVE | 5+98 | 22' RT. | * | 157.47 |
| FIRE HYDRANT | 5+98 | 20' RT. | * | 157.41 (BURY LINE) |

* TO BE CONSTRUCTED WITH CITY OF WICHITA PROJECT #: 448-76-245-88358-000-000-001

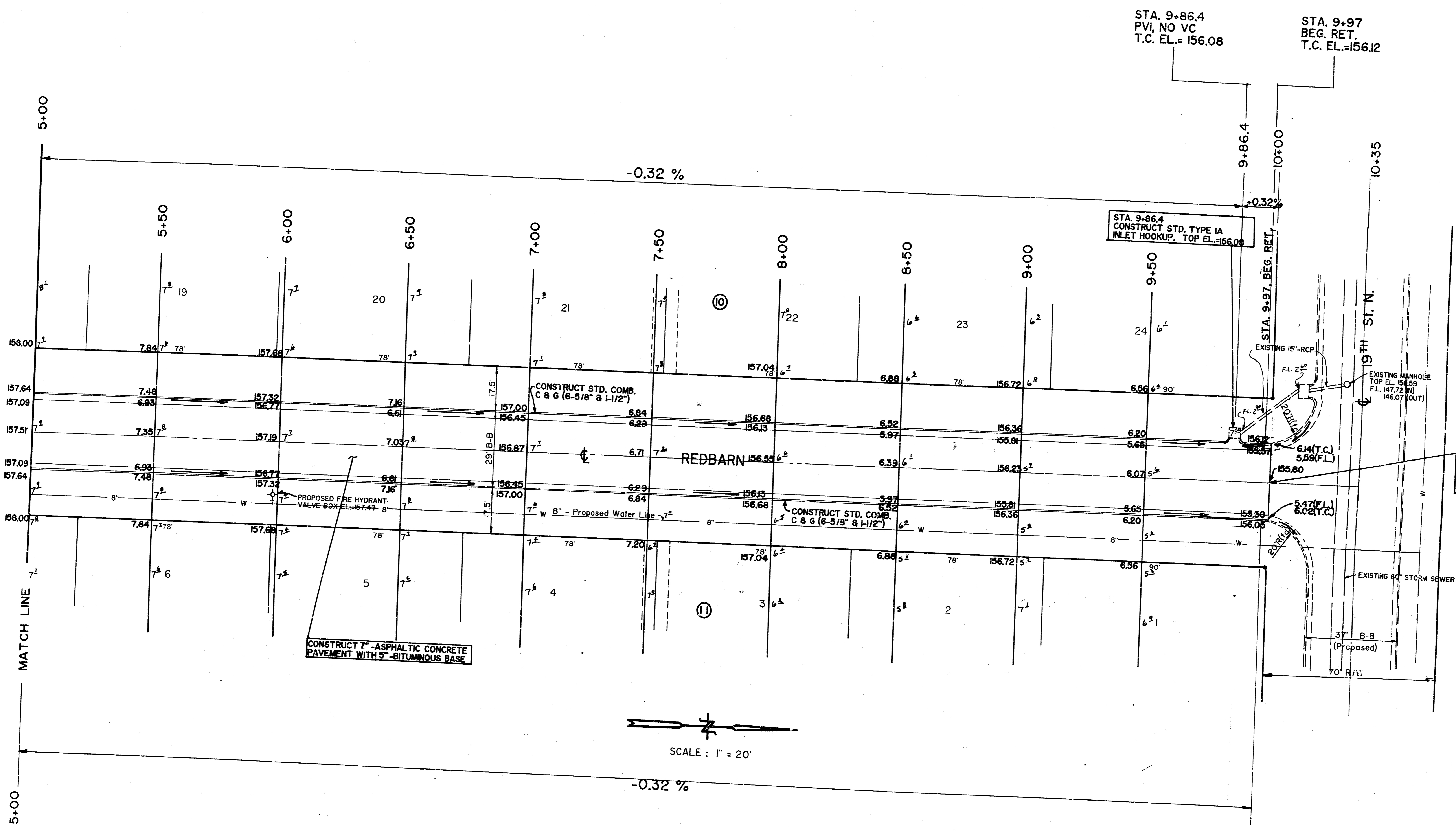


| | EXCAVATION | LOOSE FILL | COMPACTED FILL |
|--------|------------|------------|----------------|
| | 734 C.Y. | 754 C.Y. | 20 C.Y. |
| + 10 % | 73 C.Y. | 75 C.Y. | 2 C.Y. |
| TOTAL | 807 C.Y. | 829 C.Y. | 22 C.Y. |



PLAN SHEET

| | | |
|---|--------------|--------------------------|
| SCALE: AS SHOWN | APPROVED BY: | DRAWN BY: |
| DATE: 2-89 | | REVISED: |
| REDBARN Civil Engineers & Land Surveyors 264 Laura, Suite 201 Wichita, Kansas 67211 | | |
| 17TH St. N. to 19TH St. N. | | DRAWING NUMBER 3 OF 8 |
| 472-76-245-80742-000-000-001 | | |



STA. 9+86.4
PVI, NO VC
T.C. EL. = 156.08

STA. 9+97
BEG. RET.
T.C. EL. = 156.12

STA. 9+86.4
CONSTRUCT STD. TYPE IA
INLET HOOKUP. TOP EL. = 156.08

STA. 10+00; END CONSTRUCTION
MATCH WITH CITY OF WICHITA
PAVING PROJECT # 472-76-245-
8869-000-000-001

STA. 9+97
BEG. RET.
T.C. EL. = 156.05

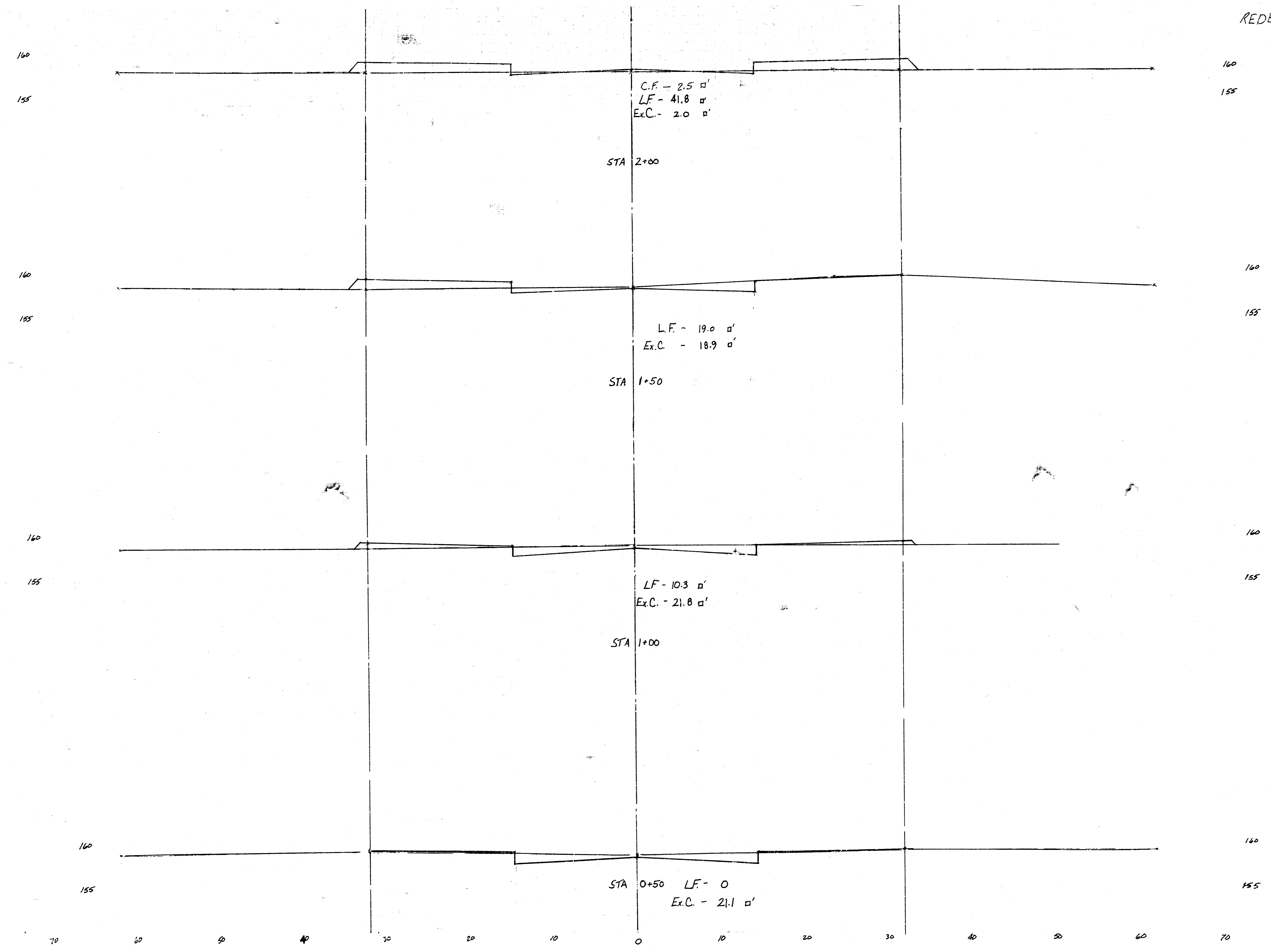
SCALE: 1" = 20'

| | |
|--|--------------------------|
| PLAN SHEET | |
| SCALE: AS SHOWN | APPROVED BY: |
| DATE: 2 - 89 | DRAWN BY: |
| REDBARN | |
| 17 TH St. N. to 19 TH St. N. | |
| 472-76-245-88742-000-000-001 | DRAWING NUMBER 4 OF 8 |

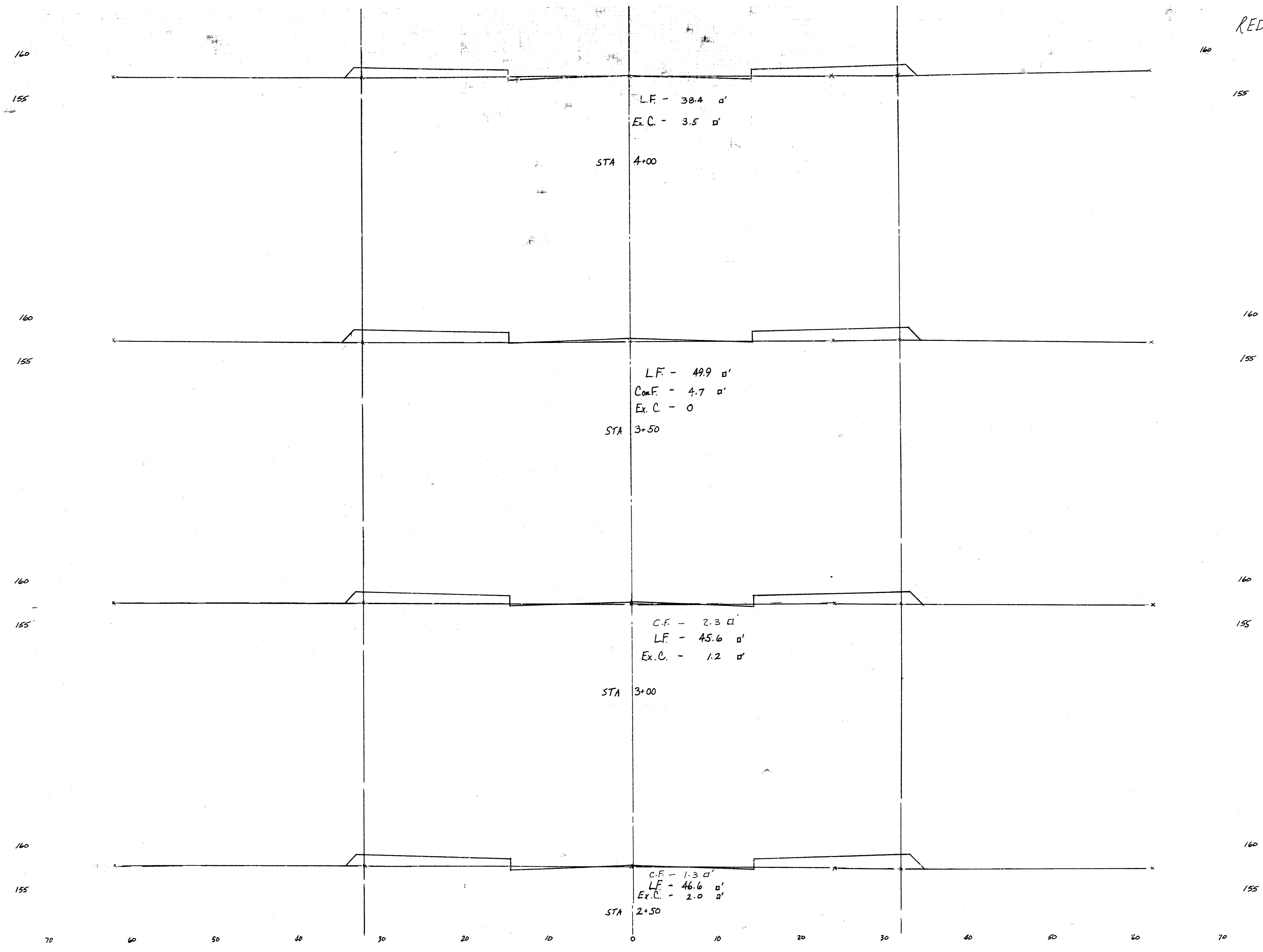
MUNICIPAL ENGINEERS
Civil Engineers & Land Surveyors
254 Laura, Suite 201
Wichita, Kansas 67211

FILMED FROM THE BEST
AVAILABLE COPY

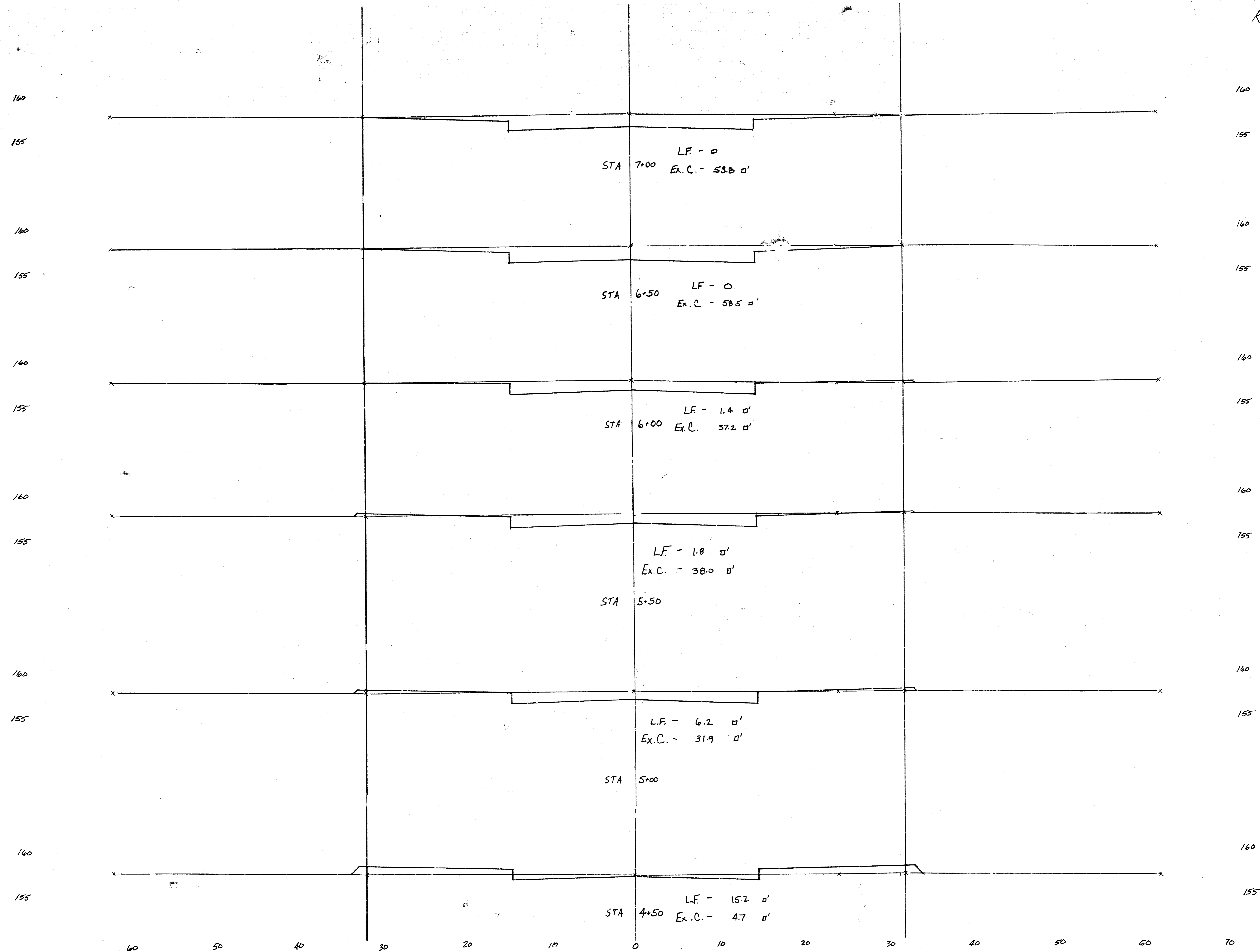
REDBARN
5 OF 8



REDBARN
6 OF 8



FILMED FROM THE BEST AVAILABLE COPY



FILMED FROM THE BEST AVAILABLE COPY

