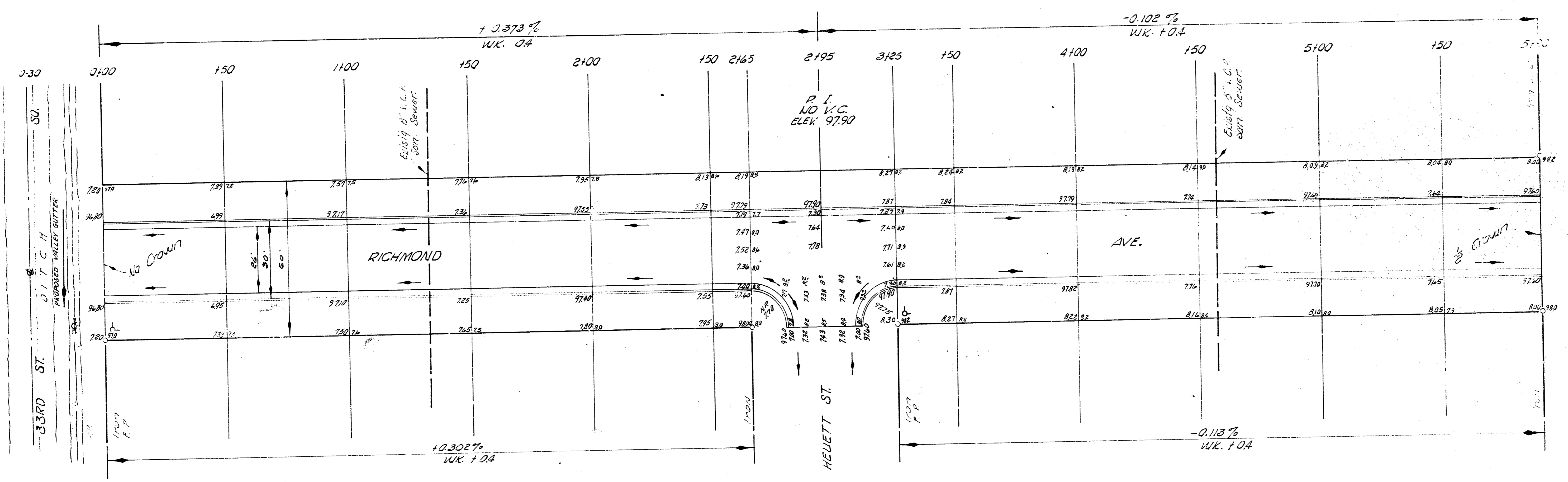


B.M. 97.605 U.S.G.S. Sid. Meridian of 31st St. So.
 3.X. 97.779 R.R. spike NB Cottonwood stump 10' So. of 2' E. of NE cor iron 33rd & Richmond.
 Stationing of base line on E. 1/2 Richmond Ave. Chain North.

SCALE 1"=20'



EKCAVATION

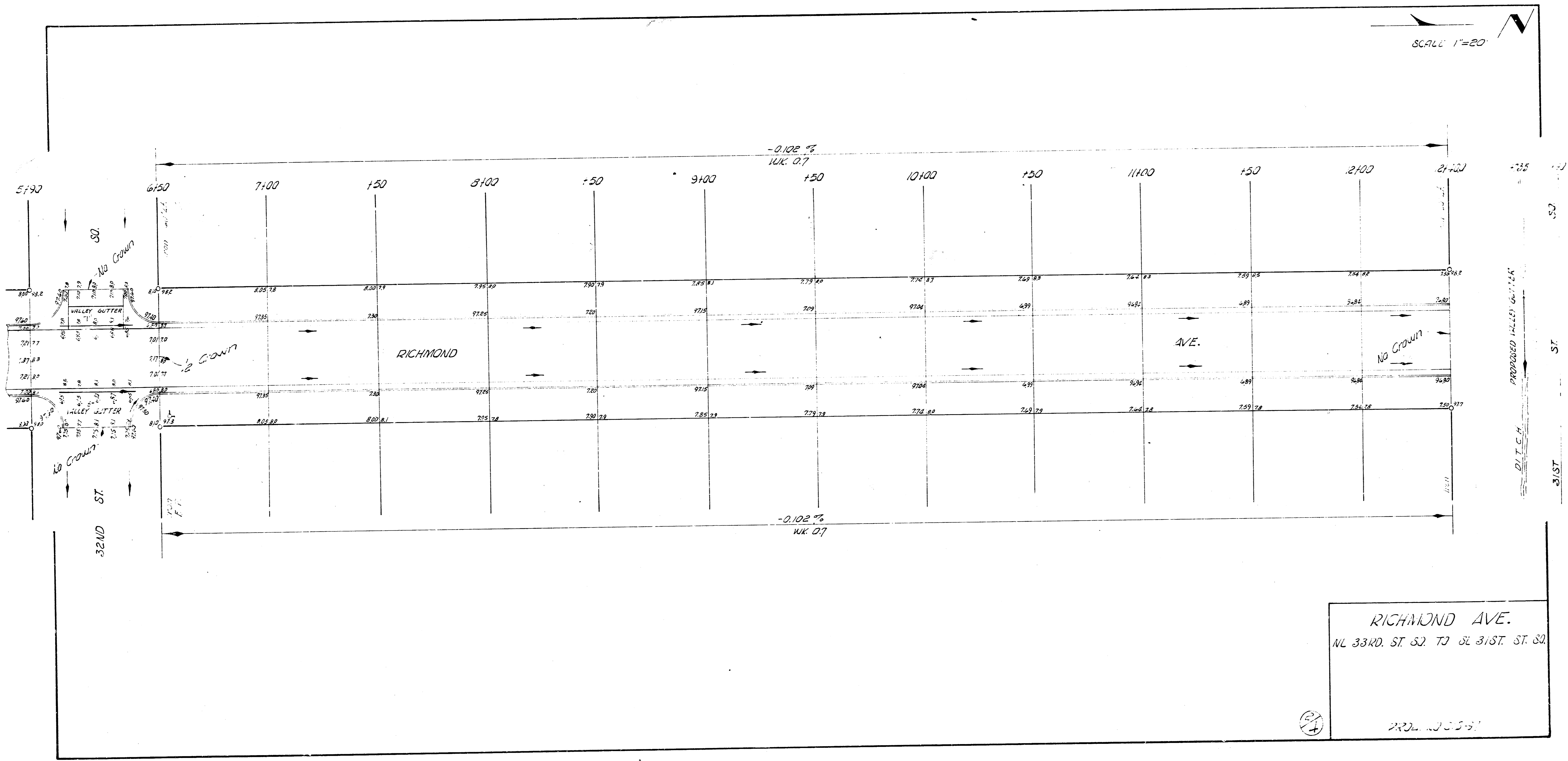
CITY	PROP.
229'	2574.2
110%	229
110%	257.4
252.0 Cu Yds.	2831.6 Cu Yds.

RICHMOND AVE.
 NW 33RD ST. TO SE 31ST ST. ST.
 26-2-30 A.C.
 CITY OF WICHITA, KANSAS
 B. E. SMITH CITY ENGINEER
 OCT. 1956, PROJ. NO. C15-97



J. W. 11-18-56
 J. W. 11-18-56
 C. W. 11-18-56

SCALE 1"=20'



RICHMOND AVE.
NL 33RD. ST. S2 TO SE 31ST. ST. S2
PRD. 1005-91