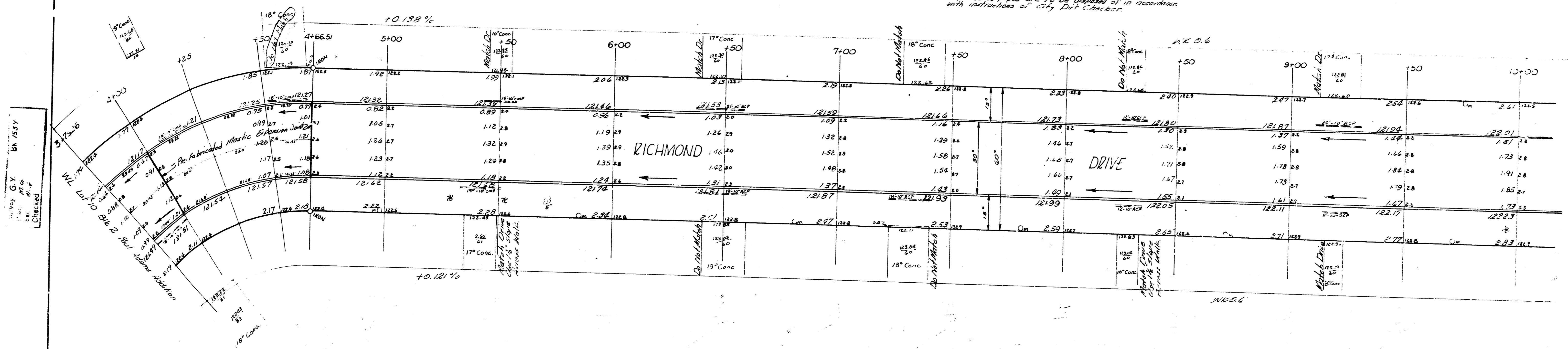


BM: 12108 SE cor 1st stop Ho NW cor 15th Meridian
 Stationing on center line. B. 1131'

NOTE TO FIELD ENGINEER:
 Curve Data on Project C16-202 - from NW Meridian
 to W. Lot 10 Bk 2 Paul Adams Addn.



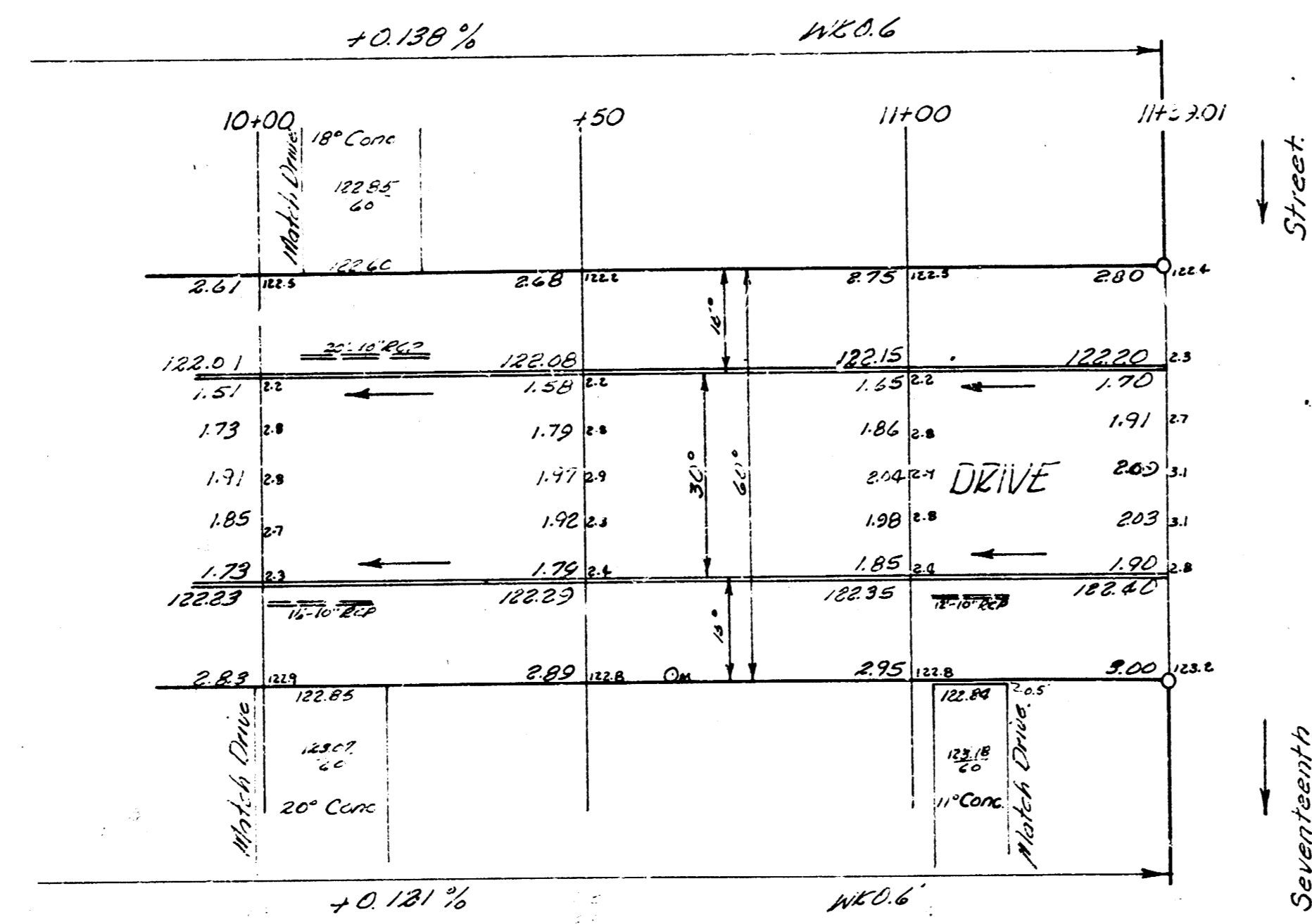
NOTICE TO CONTRACTOR:
 All entrance pipes are to be disposed of in accordance
 with instructions of City Dept. Checker.



Sheet 1 of 2
RICHMOND DRIVE
 W. Lot 10 Bk. 2 Paul Adams Add to SL 17th
 30' Conc. Curb
 CITY OF WICHITA, KANSAS.
 B. E. SMITH CITY ENGINEER
 JULY 1957 PROJ. NO. C16-202

B.M. = 123.01 22 spike NE side HLP SW cor. 17th & Richmond

RICHMOND



RICHMOND DRIVE

Sheet 2 of 2.

PROJ. NO. C16202.