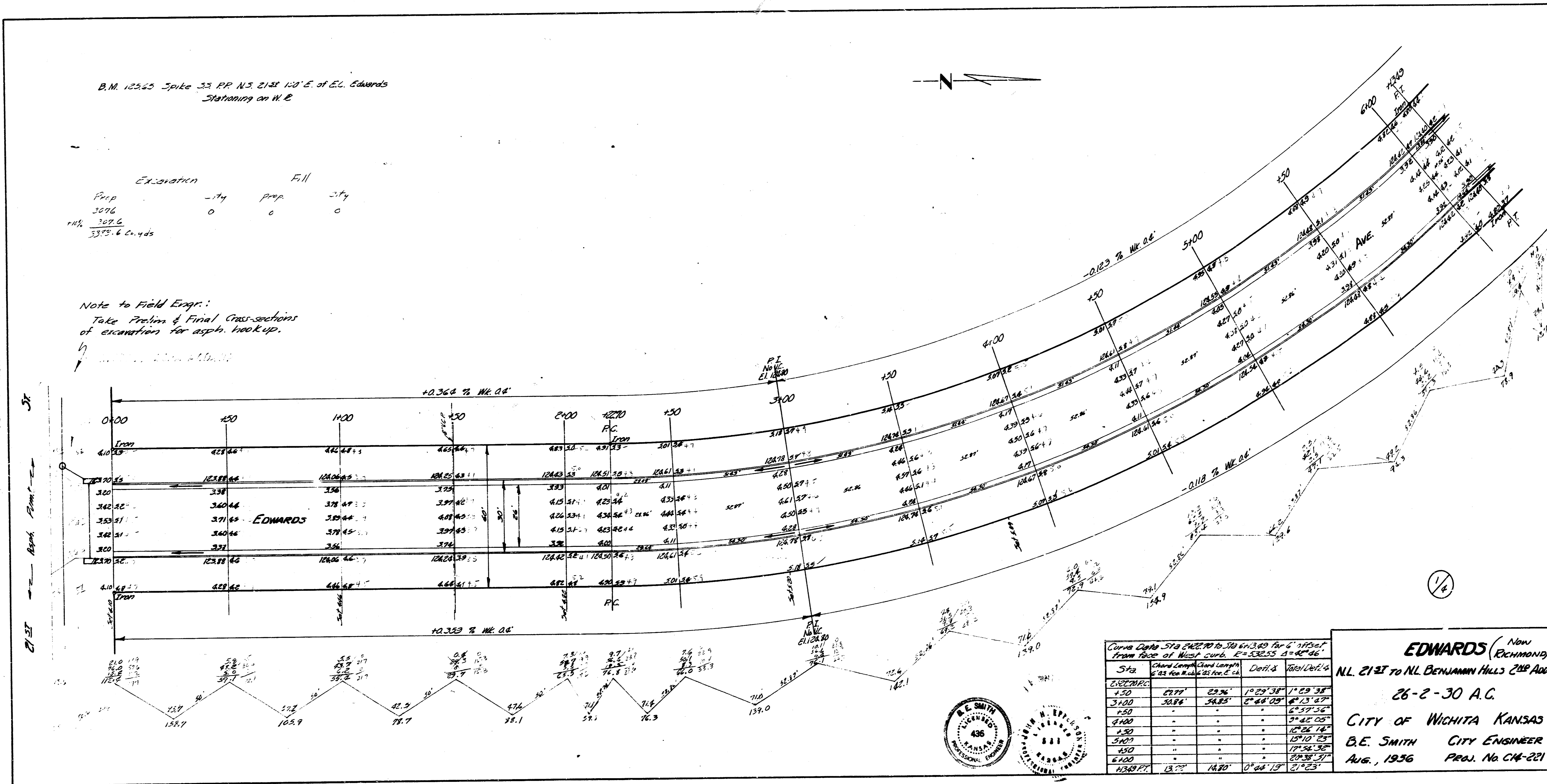


B.M. 12345 Spike 33 PP N.S. 2131 120' E. of E.G. Edwards
Stationing on W.E.

	Excavation		Fill	
Prop	374	Prop	274	
1936	0	0	0	
1937	0	0	0	
1938	0	0	0	

Note to Field Engr:
Take Prelim & Final Cross-sections
of excavation for asph. hook-up.

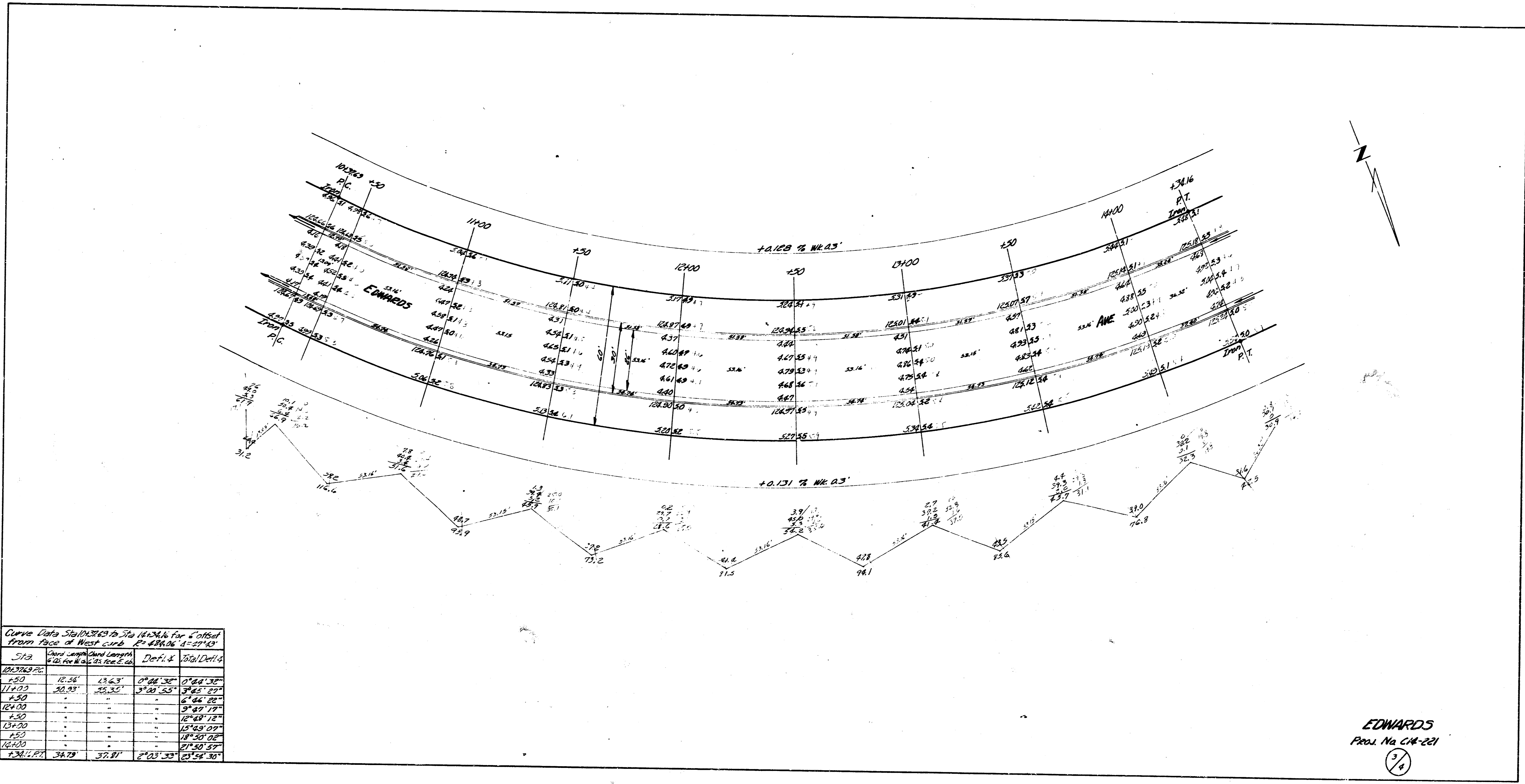


Curve Data 574 242.70 to 580 613.89 for 4' offset
from face of West curb. E=53255 S=46°46'

STATION	Chord Length	Chord Length	Dist. to	Dist. to
	to 574	to 580	574	580
574	308.6	348.5	5°48'09"	6°13'47"
580	-	-	-	6°37'52"
590	-	-	-	7°45'05"
600	-	-	-	10°26'18"
610	-	-	-	15°10'29"
620	-	-	-	17°58'36"
630	-	-	-	20°38'27"
640	-	-	-	21°23'

EDWARDS (Now
RICHMOND)
N.L. 2131 TO N.L. BENJAMIN HILLS 2ND ADDN
26-2-30 A.C.
CITY OF WICHITA KANSAS
B.E. SMITH CITY ENGINEER
AUG., 1936 PROJ. NO. CM-221

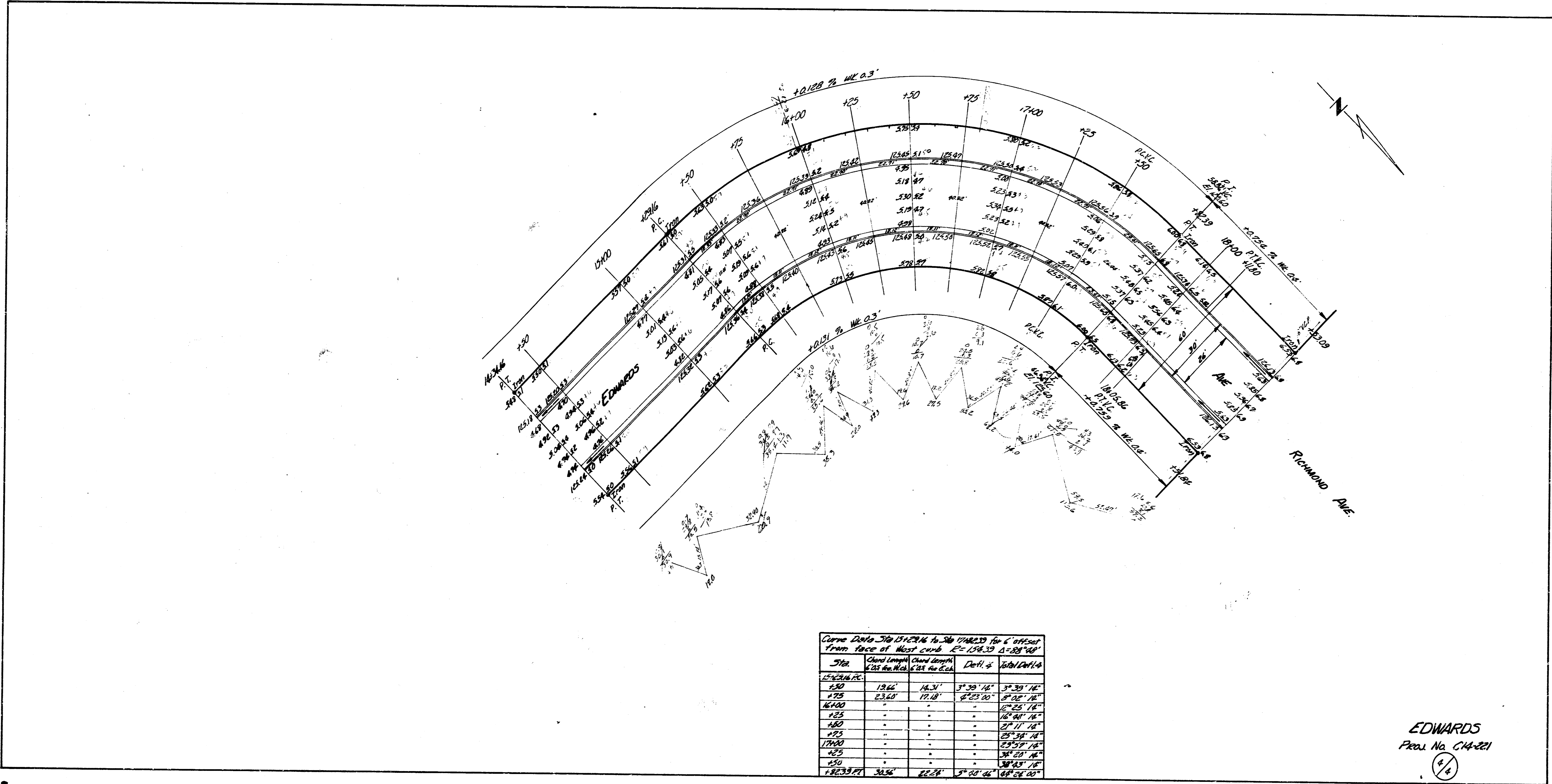




Curve Data Stationed to Sta 16+34.6 for 2' offset from face of West curb $R=889.06$ $\Delta=27^{\circ}43'$

Sta	Curve Length	Chord Length	Def. Ang.	Total Def. Ang.
10+20.00	16.56	13.63	0°44'38"	0°44'38"
11+00	20.00	16.30	3°00'55"	3°45'33"
12+00	"	"	"	6°46'28"
13+00	"	"	"	9°47'19"
14+00	"	"	"	12°48'12"
15+00	"	"	"	15°49'02"
16+00	"	"	"	18°50'00"
16+34.6	34.60	27.81	2°03'30"	20°53'30"

EDWARDS
Proj. No. CM-221



Curve Data for Stationing to be DATED for offset from face of West curb. $E = 158.39$ $S = 28.76'$

Sta.	Chord Length	Chord Distance	Dist. to	Dist. to
	6.25 ft. Ch. & 6.25 ft. Ch. & 6.25 ft. Ch. &		100 ft. Ch. &	100 ft. Ch. &
16400 P.C.				
1650	19.22'	16.37'	3° 59' 16"	3° 59' 16"
1675	23.60'	17.18'	6° 25' 00"	6° 25' 00"
16900				
1700				
1725				
17400				
1750				
1775				
1800 P.T.	34.56'	22.24'	3° 59' 16"	3° 59' 16"

EDWARDS
 Plan No. C14-221
 4/6