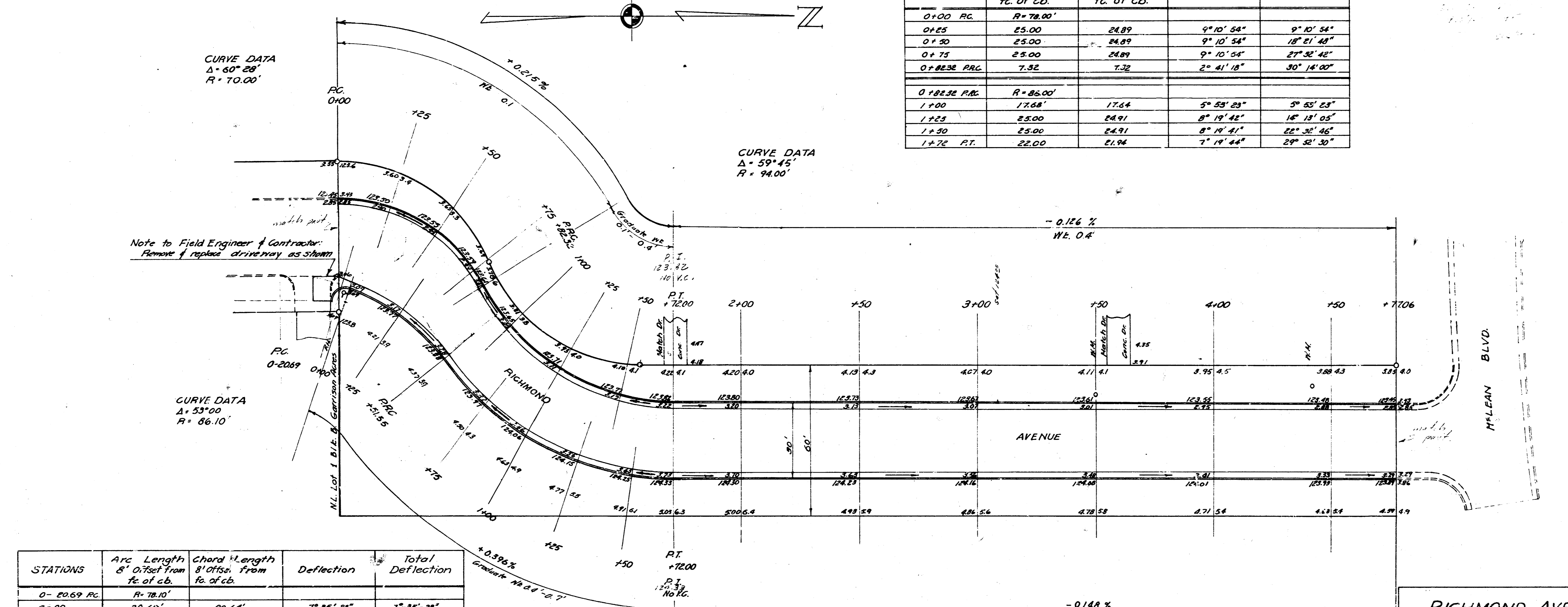


B.M. 125.93 S.E. Cor. C.A.C. porch Ho. 1915 N. Richmond
 D.M. 123.54 Std. S.M. 17th & Meridian

STATIONS	Arc Length & Offset from fc. of cb.	Chord Length & Offset from fc. of cb.	Deflection	Total Deflection
0+00 P.C.	R=78.00'			
0+25	25.00	24.89	9° 10' 54"	9° 10' 54"
0+50	25.00	24.89	9° 10' 54"	18° 21' 48"
0+75	25.00	24.89	9° 10' 54"	27° 32' 42"
0+88.88 P.A.C.	7.88	7.32	2° 41' 18"	30° 14' 00"
0+88.88 P.A.C.	R=82.00'			
1+00	17.68	17.64	5° 58' 23"	5° 58' 23"
1+25	25.00	24.91	8° 19' 42"	14° 18' 05"
1+50	25.00	24.91	8° 19' 41"	22° 37' 46"
1+75 P.T.	22.00	21.94	7° 19' 44"	29° 57' 30"



STATIONS	Arc Length & Offset from fc. of cb.	Chord Length & Offset from fc. of cb.	Deflection	Total Deflection
0+00 P.C.	R=78.10'			
0+25	20.62	20.64	7° 35' 28"	7° 35' 28"
0+50	25.00	24.89	9° 10' 15"	16° 45' 38"
0+51.55 P.A.C.	26.55	26.42	9° 44' 22"	26° 30' 00"
0+51.55 P.A.C.	R=124.00'			
0+75	23.45	23.42	5° 5' 22"	5° 05' 22"
1+00	25.00	24.8	5° 25' 33"	10° 30' 55"
1+25	25.00	24.96	5° 25' 33"	15° 56' 28"
1+50	25.00	24.94	5° 25' 33"	21° 22' 01"
1+75 P.T.	22.00	21.97	4° 46' 20"	26° 08' 38"

RICHMOND AVE.
 N.L. LOT 1 BLK. B GARISON ACRES
 TO
 S.L. McLEAN BLVD.
 26-2-30 A.C.
 CITY OF WICHITA, KANSAS
 B.E. SMITH CITY ENGINEER
 JULY 1959 PROJ. NO. C19-78

