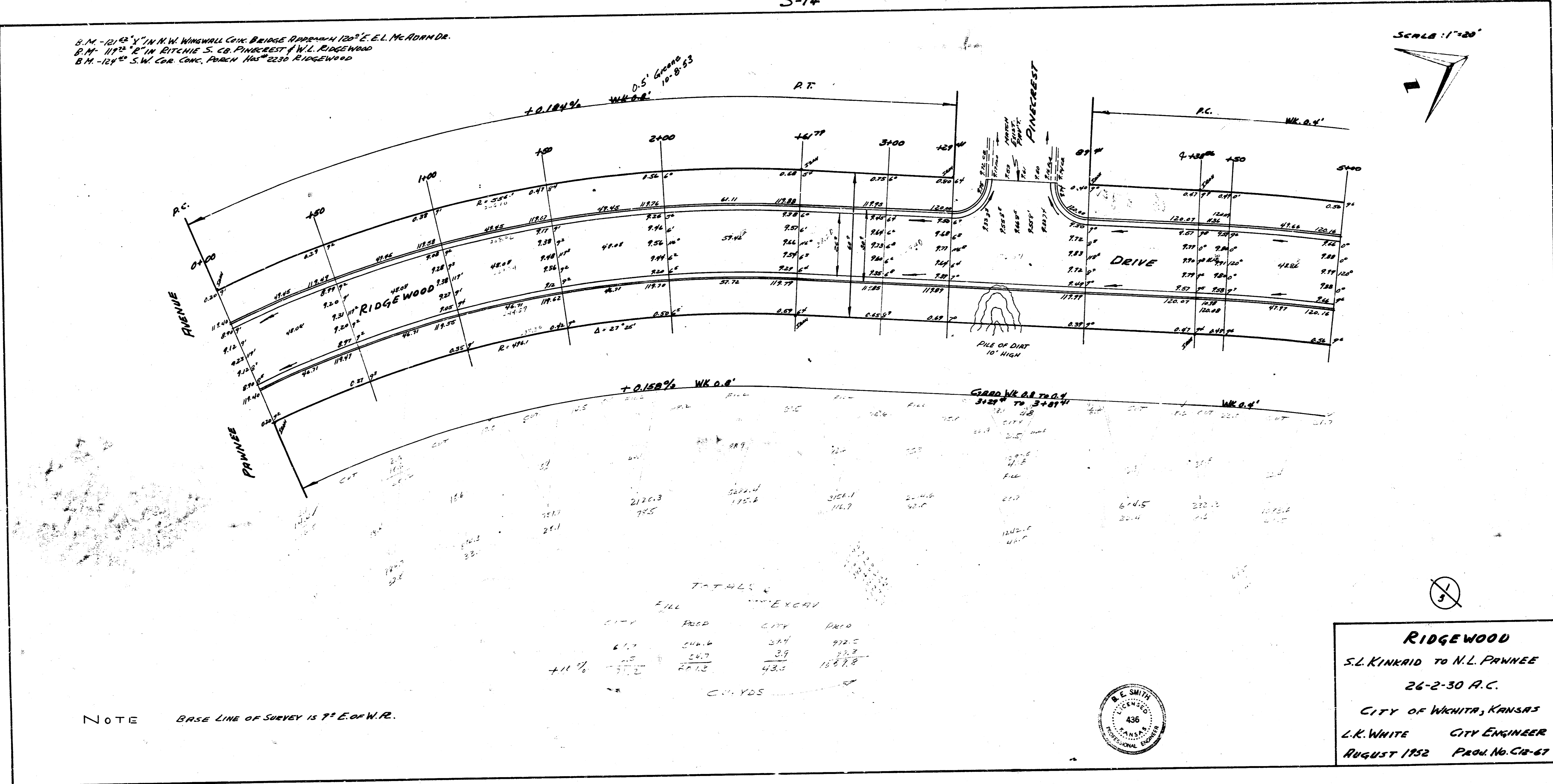
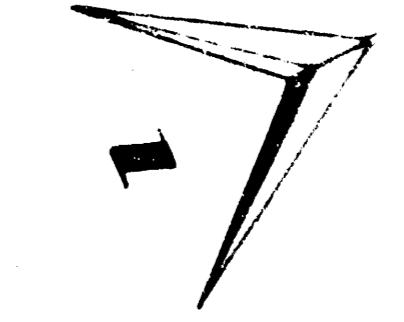


B.M. - 121.42' IN N.W. CORNER BRIDGE PAVEMENT 120° E. E.L. McADAM DR.  
 B.M. - 119.22' E. IN BITCHIE S. CB. PINECREST & W.L. RIDGEWOOD  
 B.M. - 124.40' S.W. COR. CONC. PAVEMENT 141° 22' 30" RIDGEWOOD

SCALE: 1"=20'

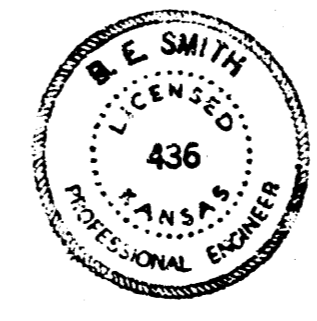


TOTALS

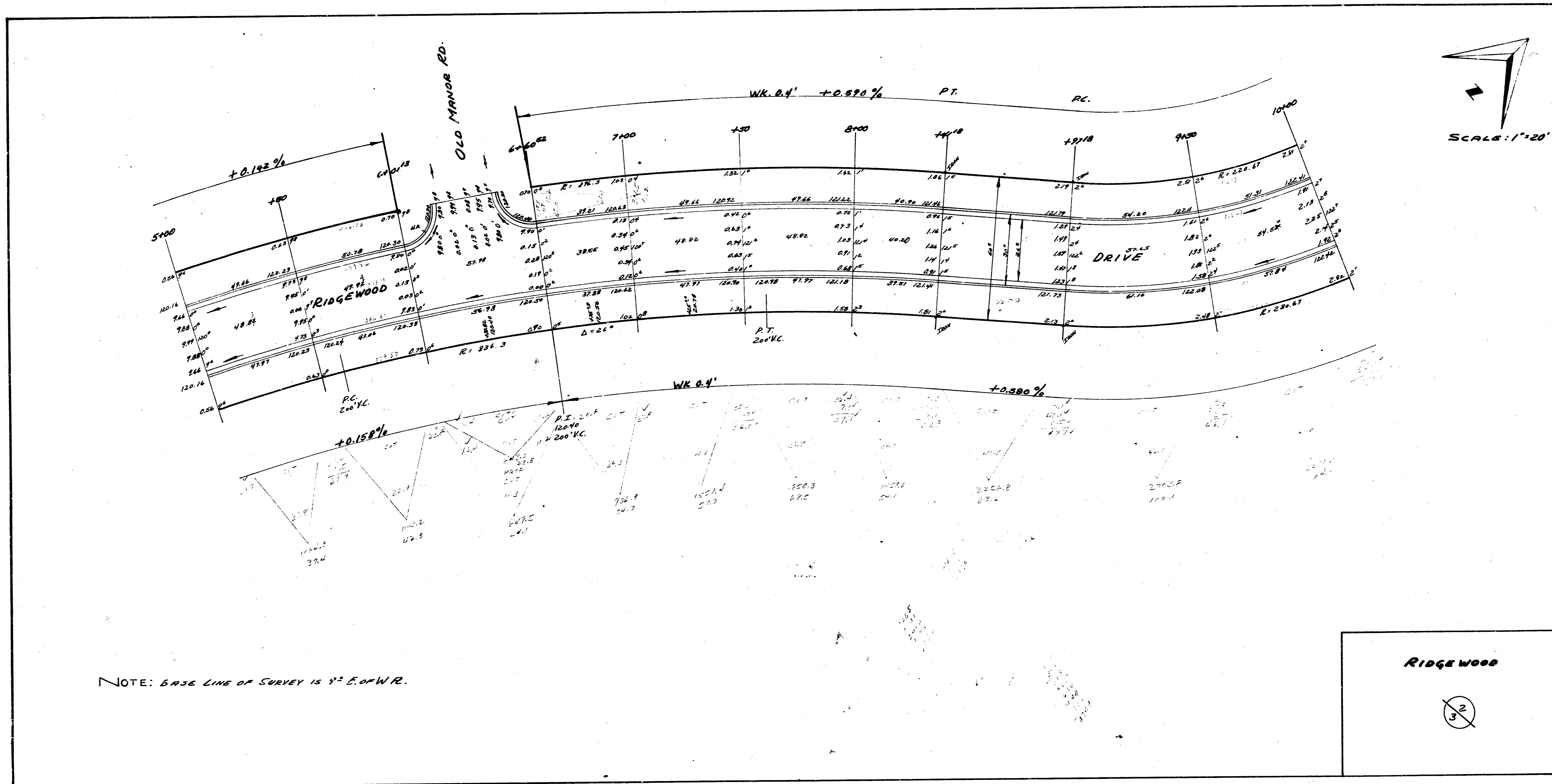
FILL		EXCH	
CITY	PROP	CITY	PROP
6.71	246.4	3.4	972.5
1.10	24.7	3.9	23.8
7.81	271.1	7.3	1000.8

CITY YDS

NOTE BASE LINE OF SURVEY IS 7° E. OF W.R.

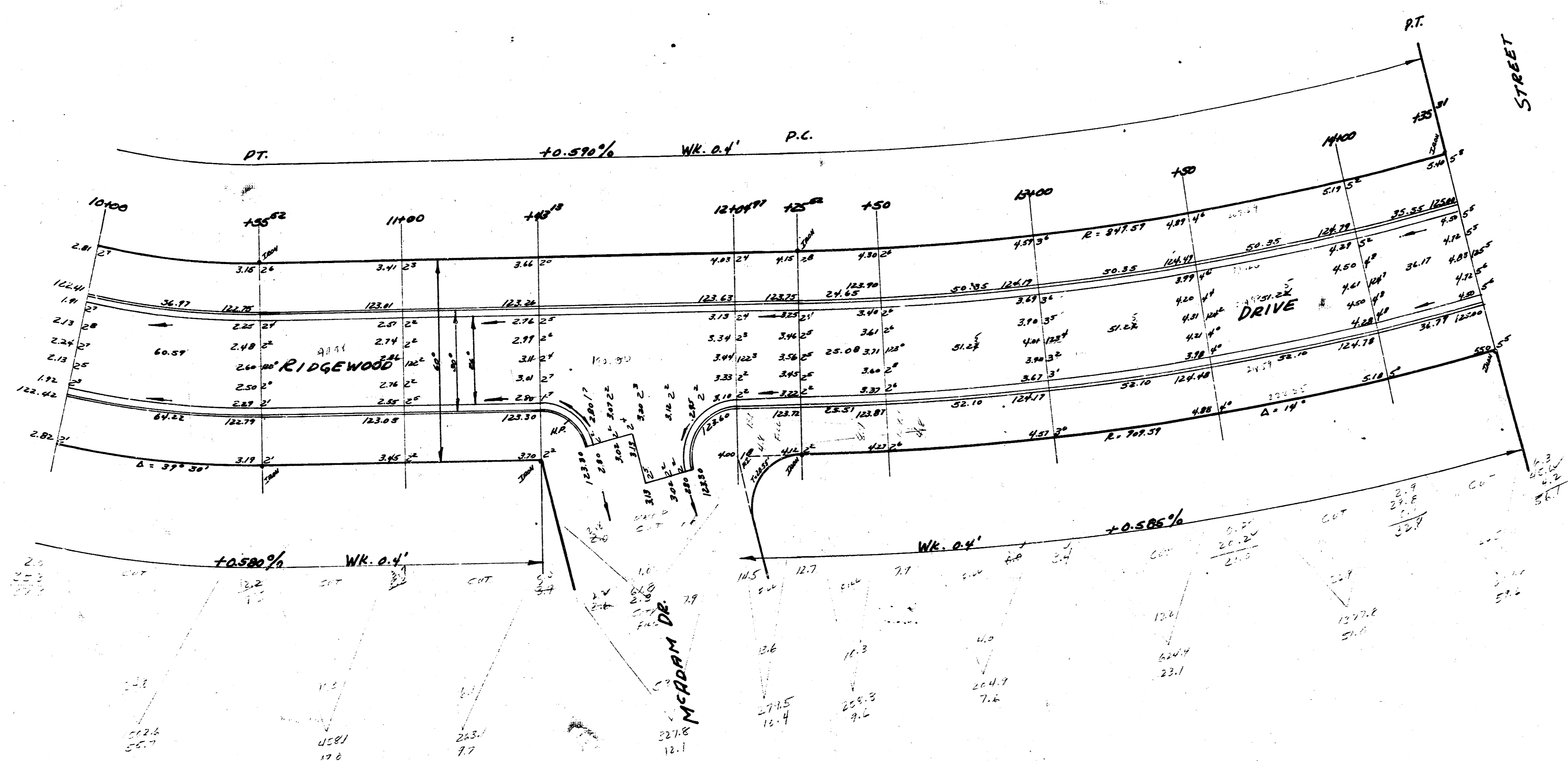
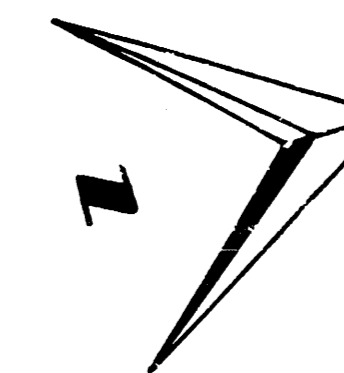


**RIDGEWOOD**  
 S.L. KINKRAID TO N.L. PAWNEE  
 26-2-30 A.C.  
 CITY OF WICHITA, KANSAS  
 L.K. WHITE CITY ENGINEER  
 AUGUST 1952 PROJ. NO. CG-67



B. M. 124<sup>th</sup> S. W. COR. CONC. PAVEN HAS<sup>2</sup> 2230 RIDGEWOOD

SCALE: 1"=20'



NOTE: BASE LINE IS 9° E. OF W.P.

RIDGEWOOD

3/5

1 0 0 0