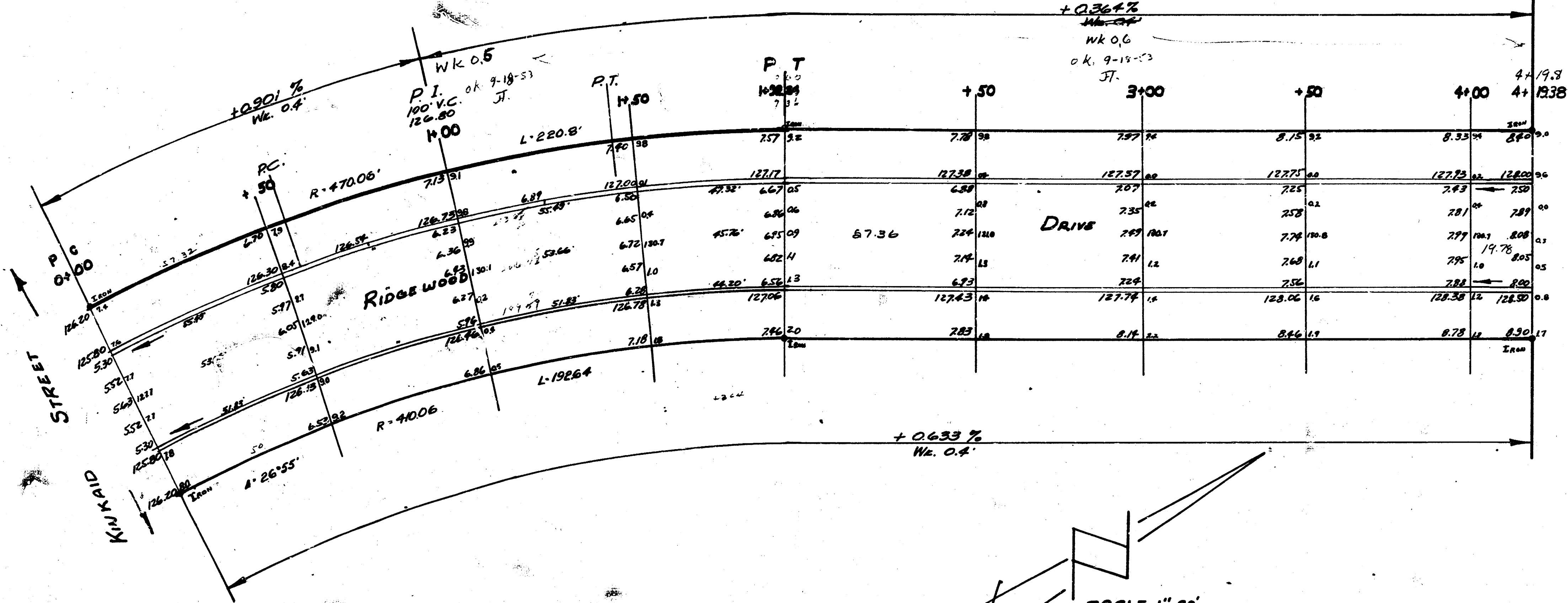


BM 12442 RR Spike SS Lt. Pole Bkt. From Top of Hill 40' N.N. Kinkaid
 BM 12535 RR Spike WS B" Walnut Hill Embankment Sl. Germann
 BM 125350 "N" in Pit on E Side East Main St Mt. Vernon
 BM 125777 Standard Van Embankment & Mt. Vernon
 BM 12825 SE Cor. Conc. Pav. Mt. Vernon & Mt. Vernon

Stationing on E.E.

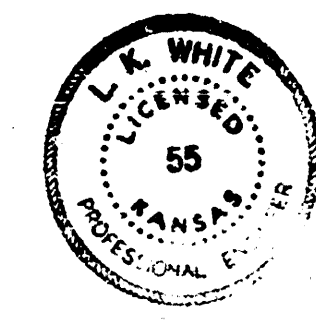
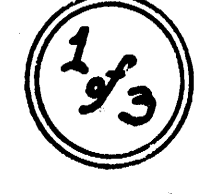
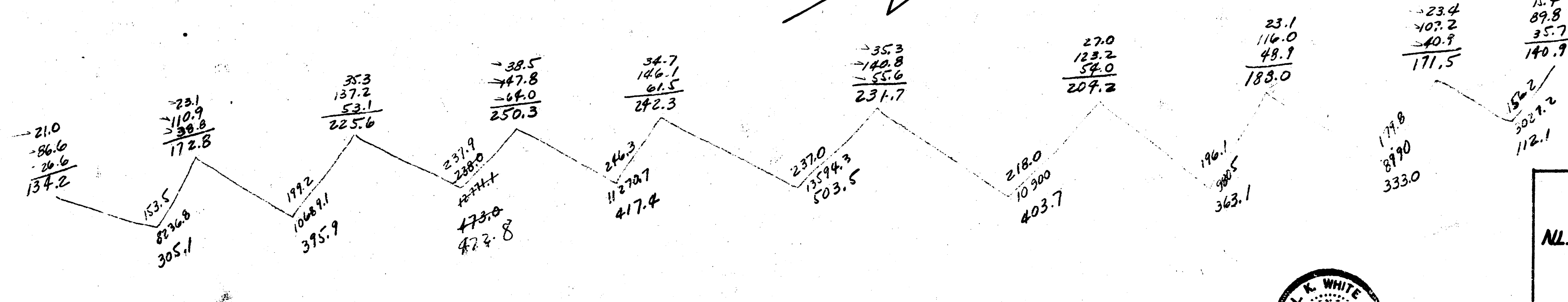
3306.8

EIC.
 PROPOSED CITY
 3306.8 573.7
 1833.5 +10.7%
 1283.3
 6523.6
 +10.7%
 7176.0 in 105.



GERMANN DRIVE

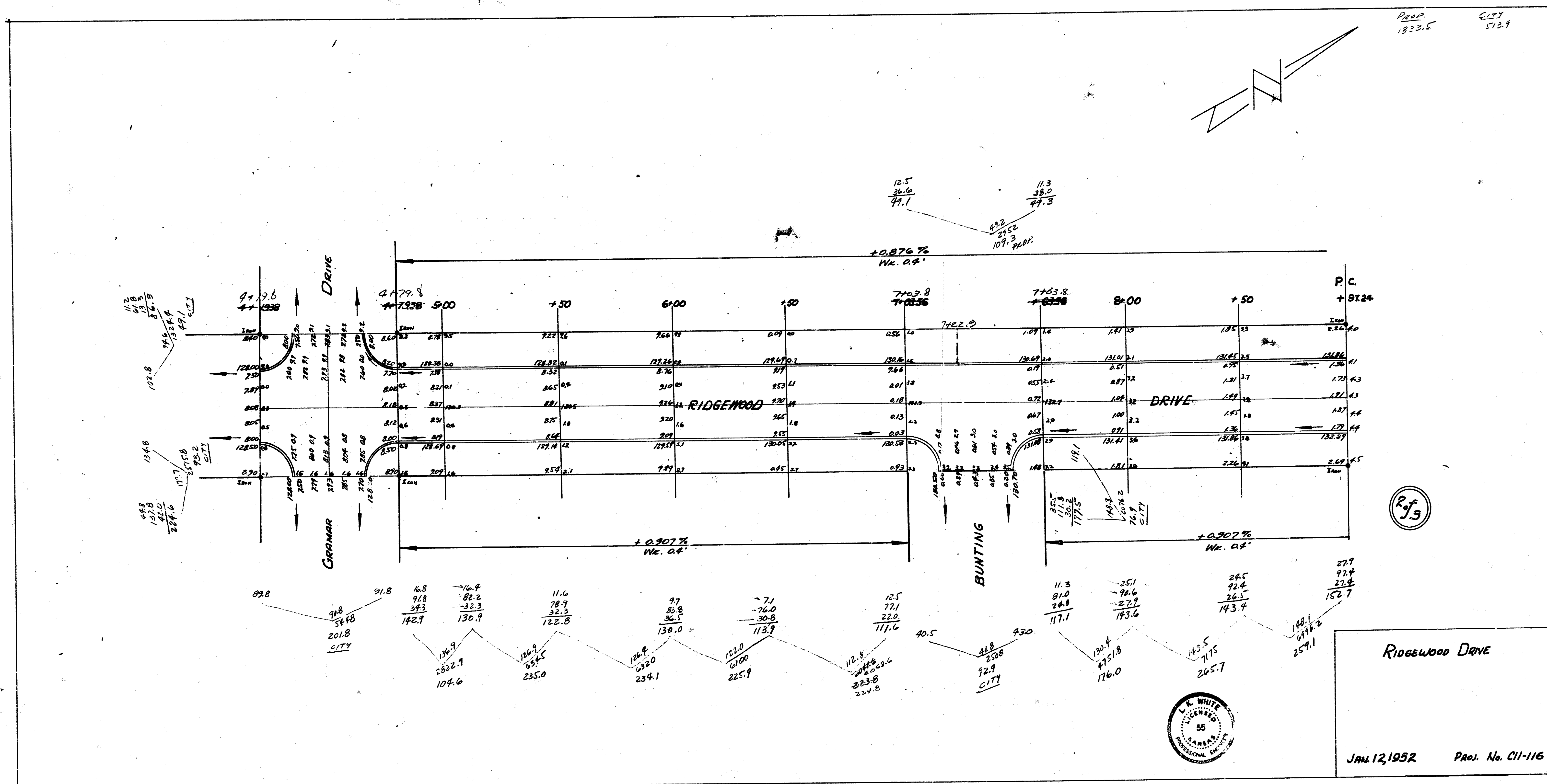
SCALE 1"=20'



RIDGEWOOD DRIVE
 N.L. KINKAID ST. to S.L. Mt. VERNON RD.
 30' CONC. C.B.
 CITY OF WICHITA, KANSAS
 L.K. WHITE CITY ENGINEER
 JAN. 12, 1952 Proj. No. CH-116

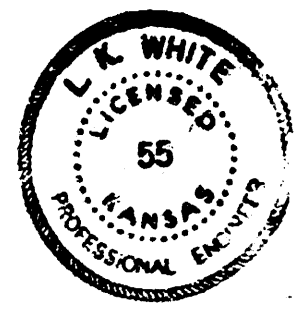
SURVEY CORRECTED BY J.S. PLATT, 12-1-52, FROM SURVEY 1-27-52

24,814.17

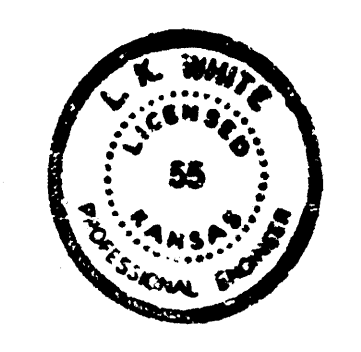
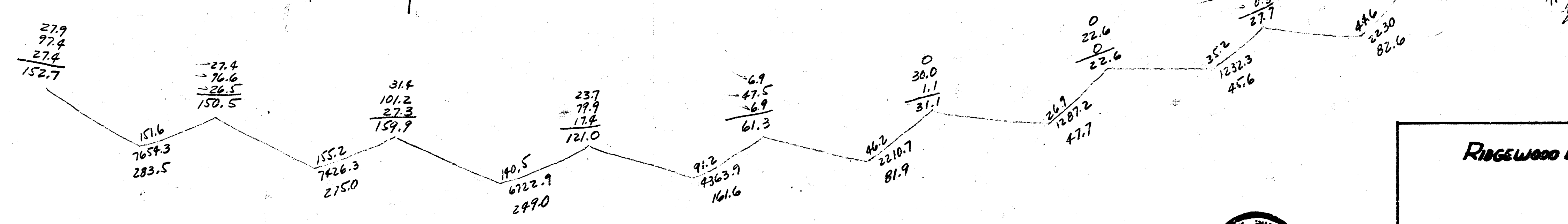
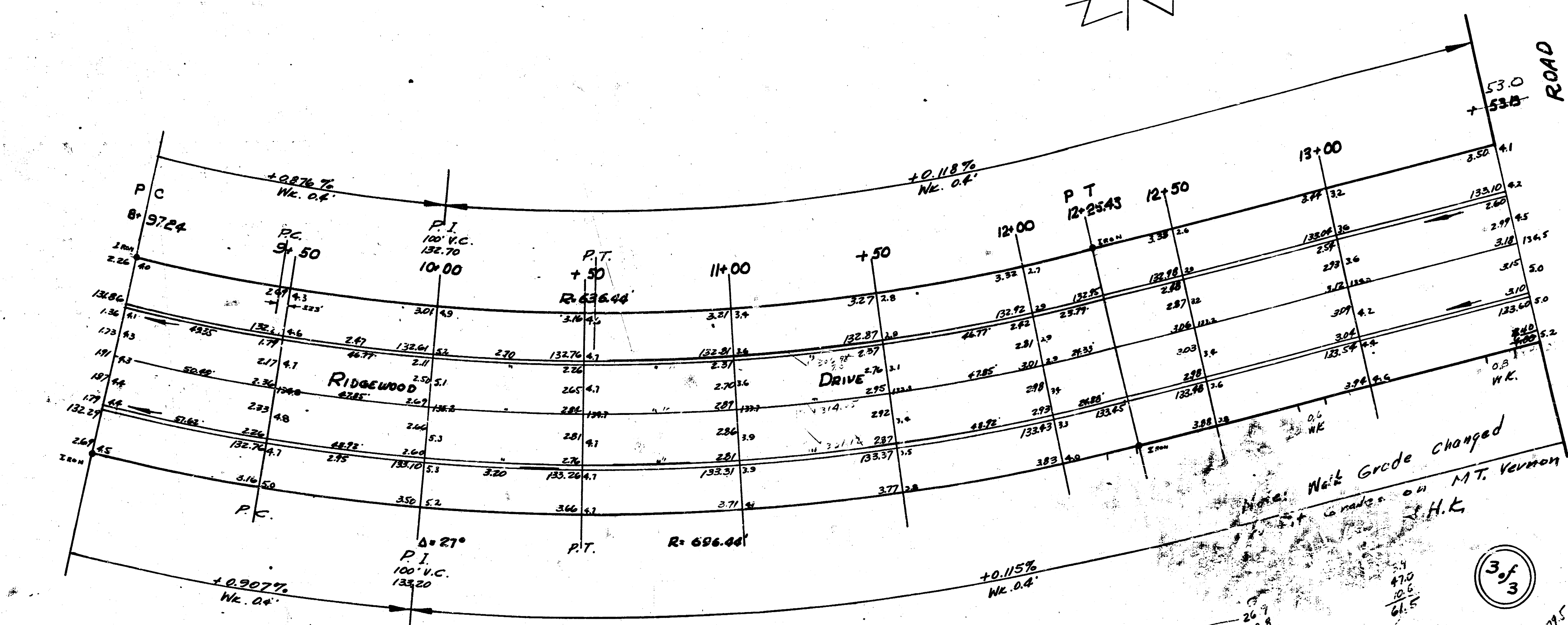
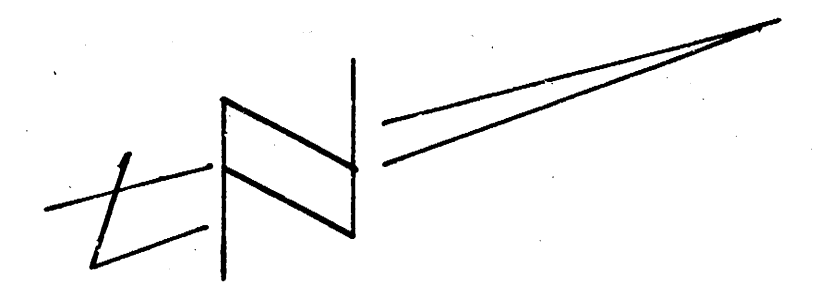


Prop.
1833.5
 City
513.9

R.F.



RIDGEWOOD DRIVE
 JAN. 12, 1952
 Proj. No. C11-116



RIDGEWOOD DRIVE

Jan 12/1952 Proj No. C11-116