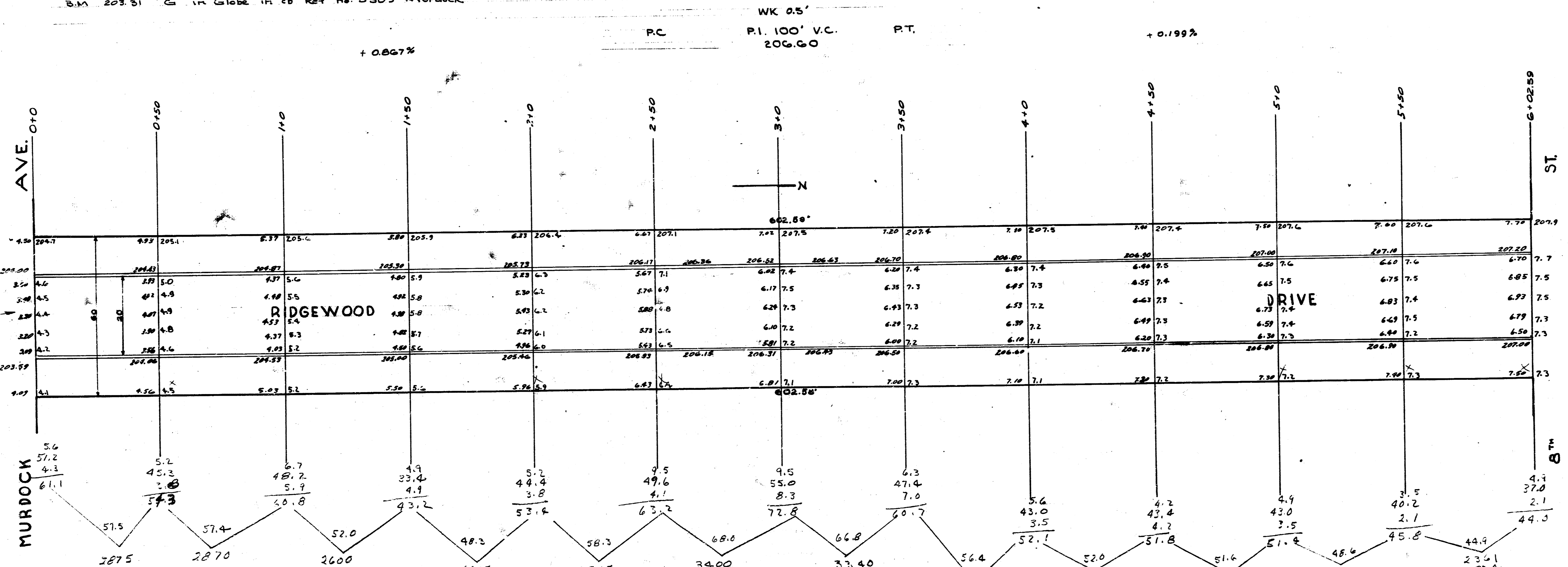


B.M. 207.89 Top Iron W.L. Ridgewood S.L. 8th
 B.M. 203.31 "G" in Globe in cb Ret No. 5503 Murdock



NO CROWN

MURDOCK

S.L. 8th

Proposed
 4' x 4' concrete curb
 30' concrete & curb
 12' sidewalk
 12' sidewalk
 12' sidewalk

Prop City
 1933.0
 1352.8
 3285.8

City
 126.6
 126.6

RIDGEWOOD DRIVE
 N.L. MURDOCK TO S.L. 8th
 30' CONCRETE & CURB
 CITY OF WICHITA, KANS
 L.K. WHITE CITY ENGINEER
 DEC 1946

1/2

