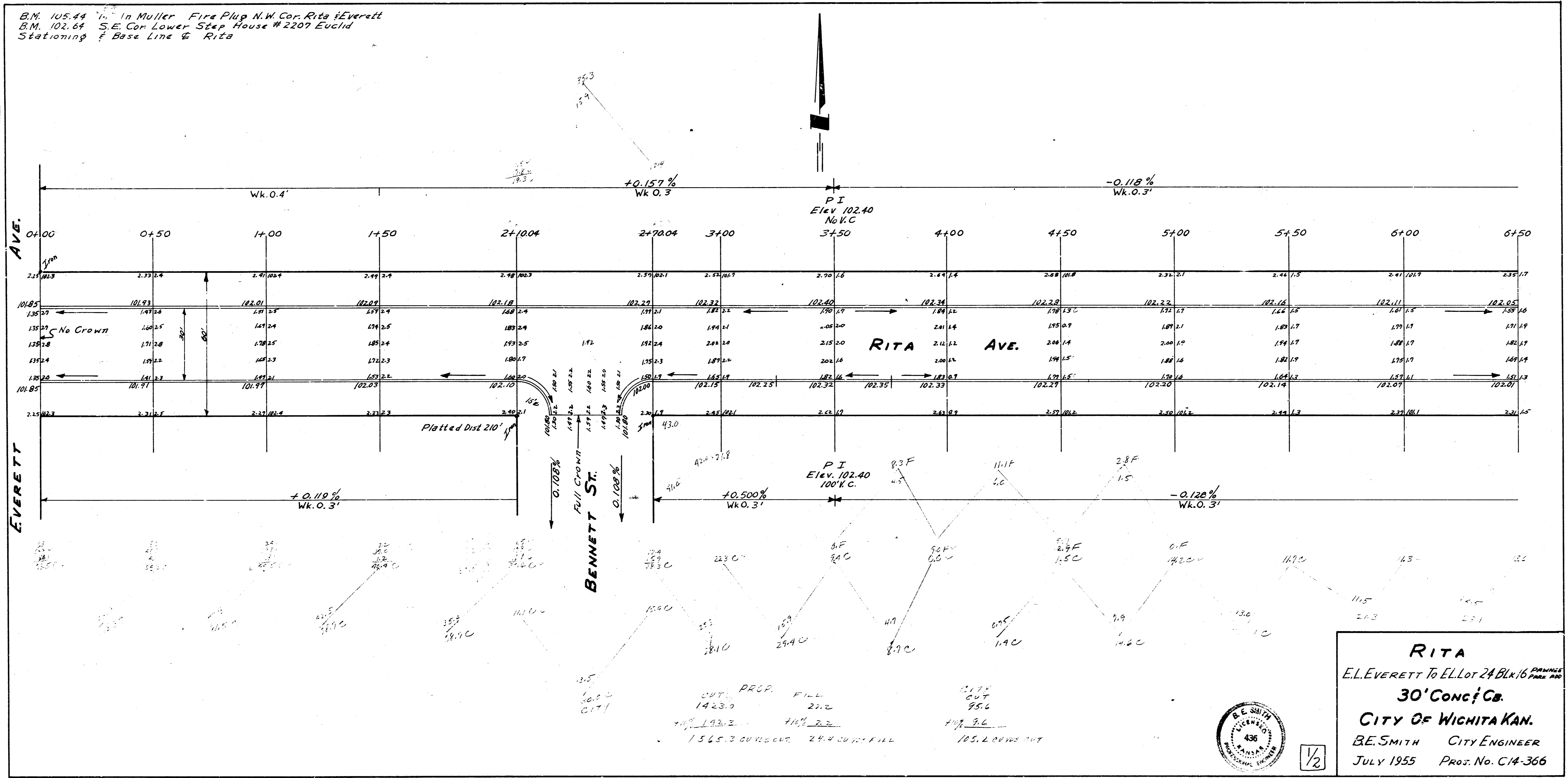


B.M. 105.44 in Muller Fire Plug N.W. Cor. Rita & Everett  
 B.M. 102.64 S.E. Cor Lower Step House #2207 Euclid  
 Stationing & Base Line & Rita



**RITA**  
 E.L. EVERETT TO E.L. LOT 24 BLK 16  
**30' Conc. Co.**  
 CITY OF WICHITA KAN.  
 B.E. SMITH CITY ENGINEER  
 JULY 1955 PROJ. NO. C14-366



1/2

CUT PRCP. FILL  
 1423.0 27.2  
 1565.3 CURB CUT 24.4 CURB FILL  
 105.2 0.0000 CUT

