

B.M. 126.67 R.R. Spike S. Side P. Pole
on N. Side 214th St. & River Park Drive

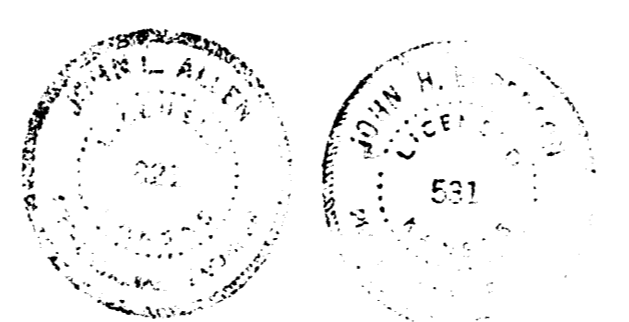
B.M. 126.66 "R" in Ritchie W. Curb River Park
Drive @ S.L. Lot 11, Block 6

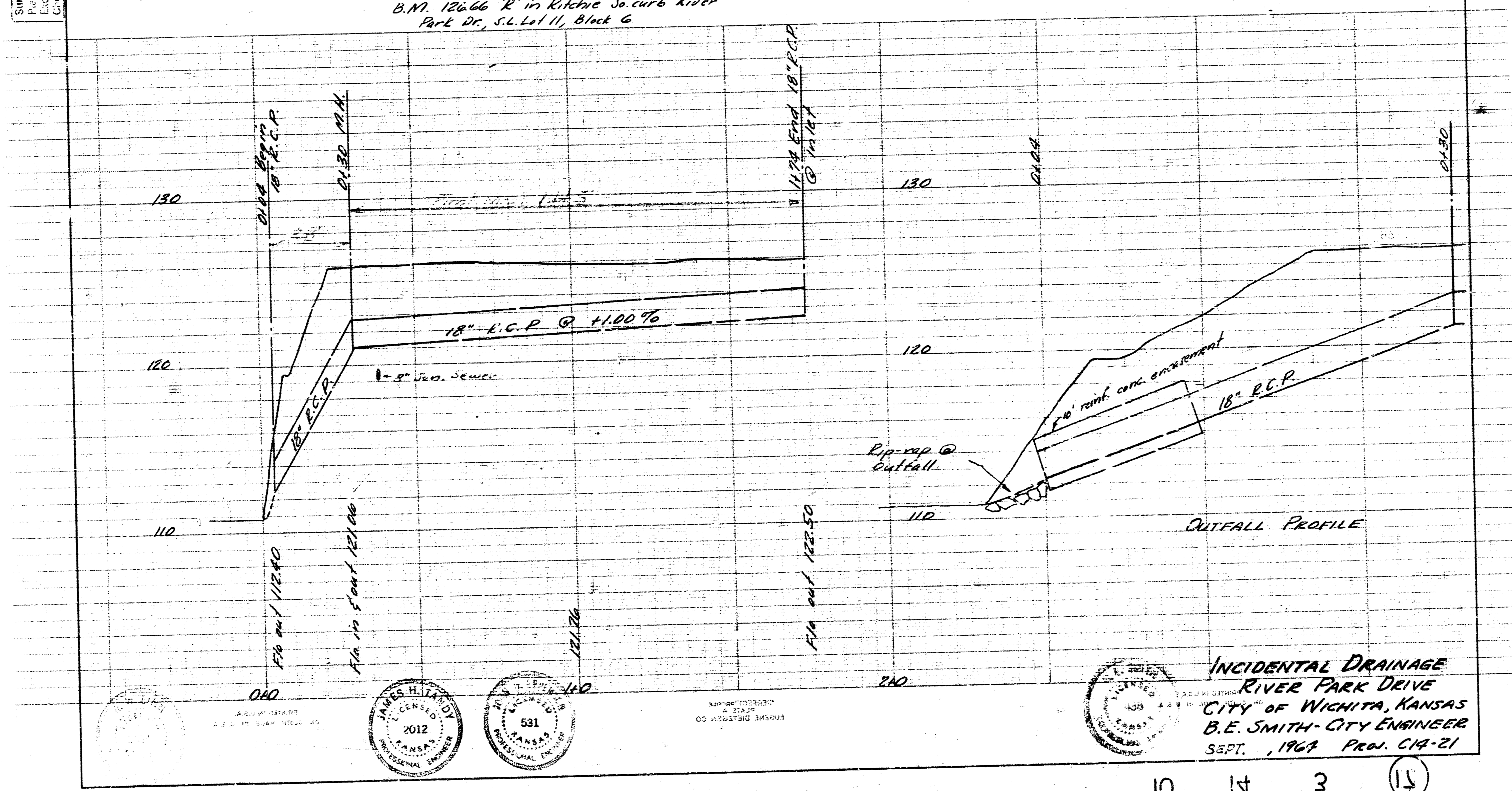
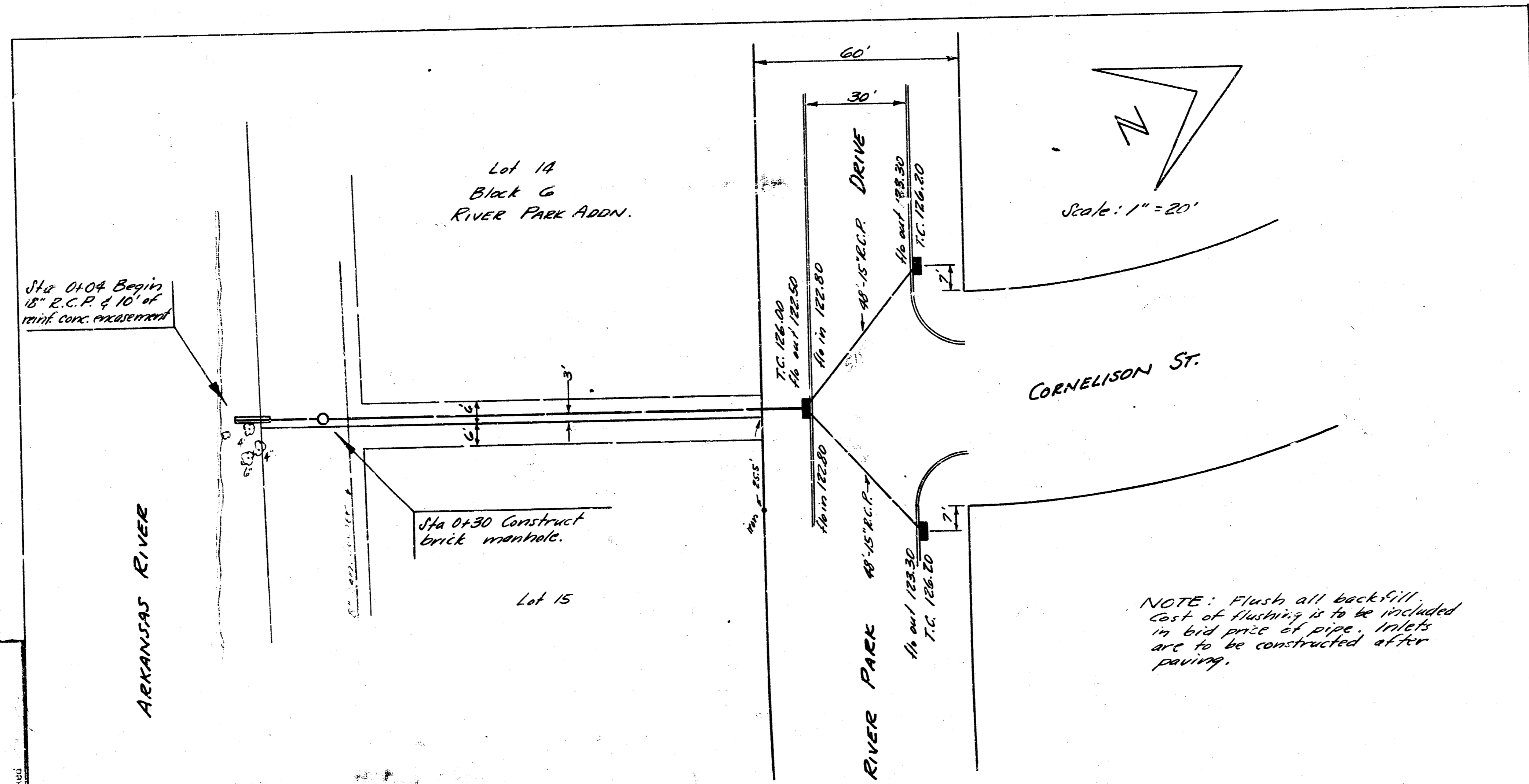
Base Line for Curve Data is 80' offset face (Rt) Curb

Station	Point	Alignment	Deflection	Chord	Arc
4+36.95	P.T.	$\Delta = 66^{\circ}00'$	$33^{\circ}00'$		2468
4+75		$R = 207.00'$	$23^{\circ}35'10''$		2813
4+50		$L = 238.45'$	$25^{\circ}41'35''$		2813
4+25			$21^{\circ}48'00''$		2632
4+01.07		Beq. Proj.	$18^{\circ}04'28''$		
2+85	RC				

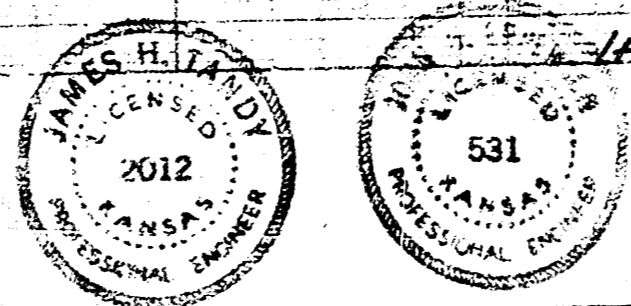
PROPERTY EXCAVATION		CITY EXCAVATION	
181	Cu Yds.	60	Cu Yds.
+10%	18	6	
Totals	199	66	Cu Yds.

RIVER PARK DRIVE
 FROM S.L. Lot 11, Block 6, RIVER
 PARK ADDN. to E.L. Lot 14
 BLOCK 6, RIVER PARK ADDN.
 26'-2'-30" ASPH CONC.
 CITY OF WICHITA KANSAS
 B.E. SMITH CITY ENGINEER
 Date: Sept. 1927
 Proj. No. C-14-21





Submitted to: City of Wichita
 Date: 9/1/67
 Project: Incidental Drainage
 Sheet: 15



INCIDENTAL DRAINAGE
 RIVER PARK DRIVE
 CITY OF WICHITA, KANSAS
 B.E. SMITH - CITY ENGINEER
 SEPT. 1967 Proj. CIA-21