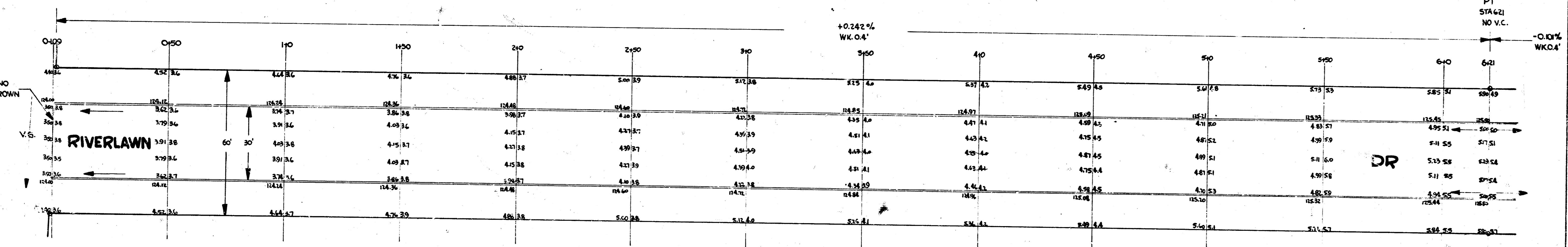


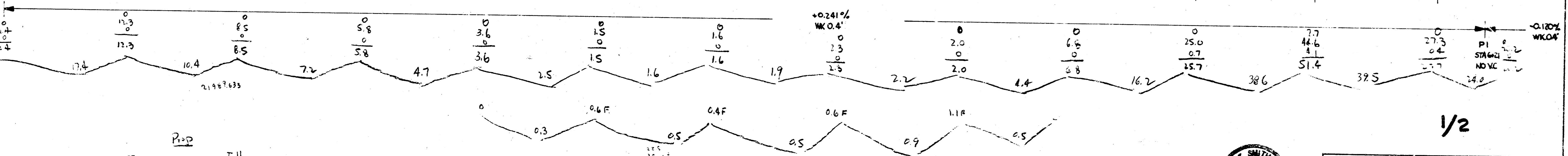
B.M. RR SPIKE E.S. COTTONWOOD 75' N. OF N.E. COR. AMIDON & 23RD ELEV 124.95
 B.M. TOP IRON N.W. COR. RIVERLAWN & 23RD ELEV 123.77

NOTE:
 STA. ON W.P.L.

ST



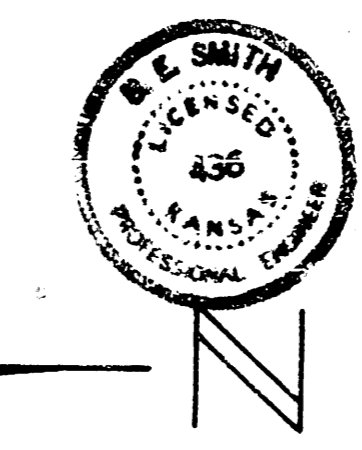
23RD



Survey Notes
 Plan
 Exc
 Proposed

Exc
 814.4
 100%
 815.8

Fill
 135.8



RIVERLAWN DR.
 N.L. 23RD TO S.L. 24TH
30' CONC. & CURB
 CITY OF WICHITA, KANSAS

B.E. SMITH
 MAR 1954

CITY ENGINEER
 PROJ. NO. C13-171

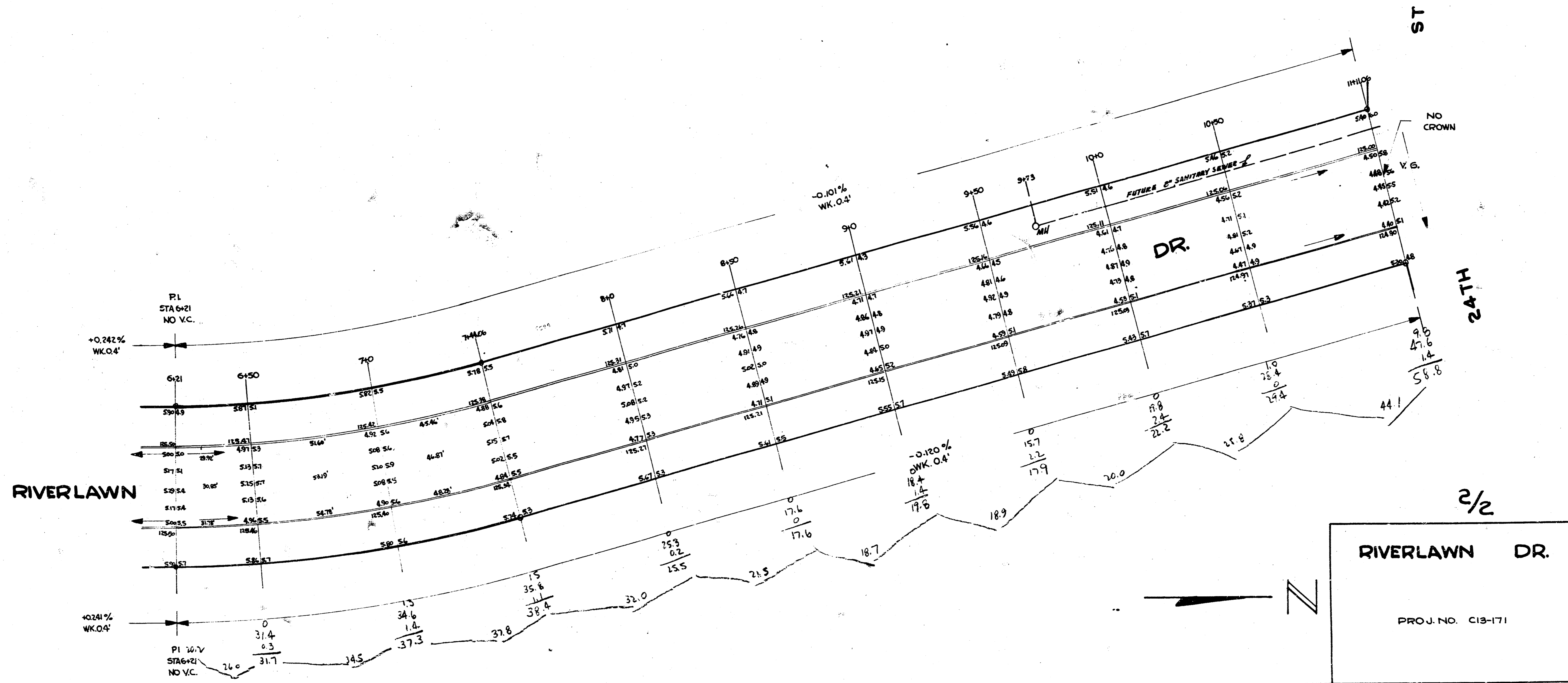
1/2

DATA FOR CURVE BST STA 6+21 & STA 7+44.06					
STA ON W.P.L. $R=470'$ & $\Delta=15^{\circ}00'$					
STA	ARC LENGTH ON W.P.L.	CHORD LENGTH ON G' OFFSET W.C.B.	CHORD LENGTH ON G' OFFSET E.C.B.	DEFLECTION ANGLE	TOTAL ANGLE DEFLECTION
6+21	29.0'	29.54'	32.14'	1° 44' 03"	1° 44' 03"
7+40	50.0'	50.94'	55.40'	3° 02' 51"	4° 46' 54"
7+44.06	44.06'	44.58'	48.82'	2° 41' 06"	7° 30' 00"

B.M. RR SPIKE IN 40' COTTONWOOD S.E. COR. MIDON & 24TH ELEV. 127.11

NOTE:

Driveway Rps. on Left or West Between Sta. 9+73 & Sta. 11+11.06 are not a part of this Contract. Curb Openings shall be left for future Drives.



RIVERLAWN DR.

PROJ. NO. C18-171

1 0 1 8 7