

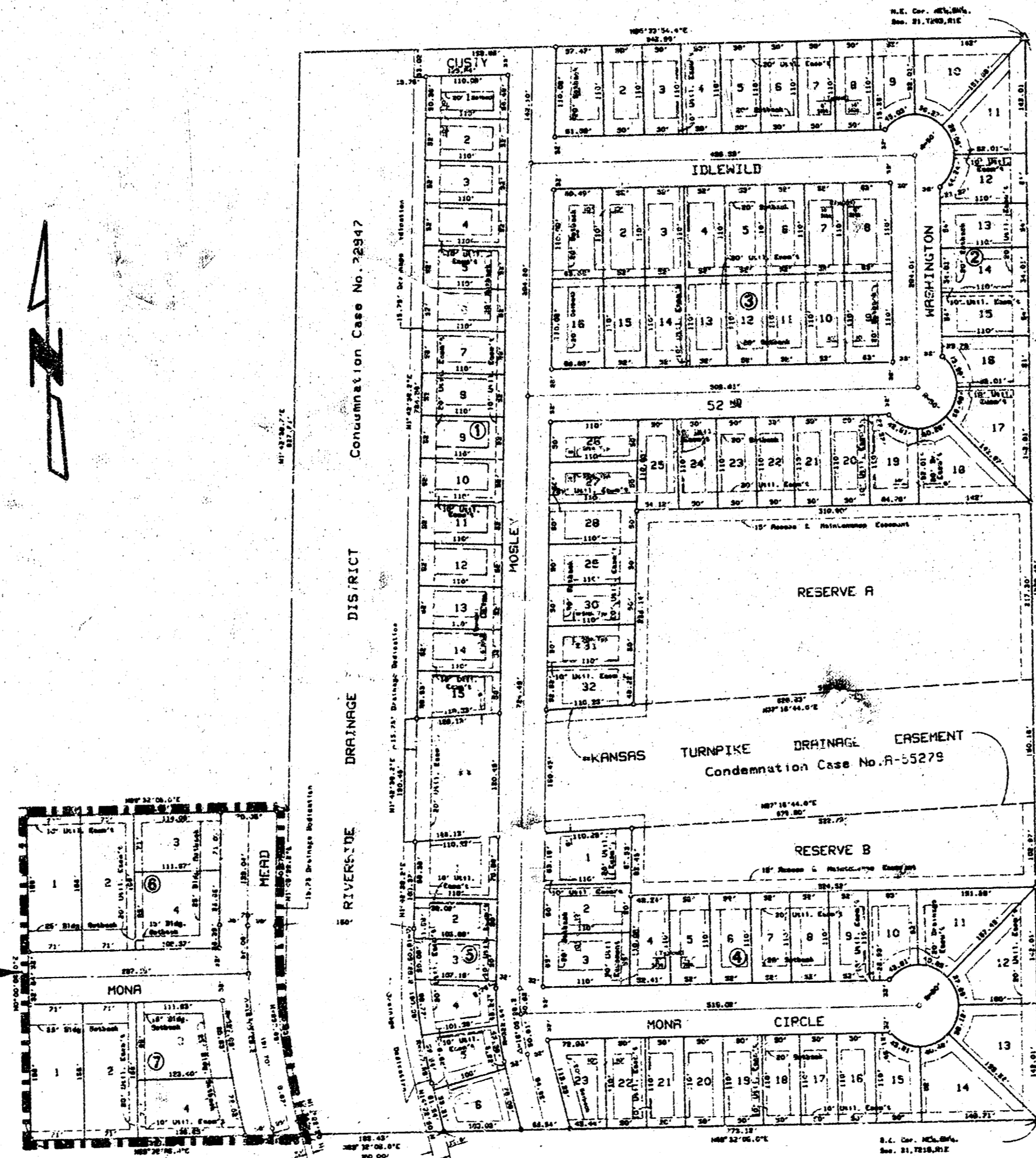
CITY OF WICHITA, KANSAS  
**STREET IMPROVEMENTS**  
**(RIVERSIDE FOURTH ADDITION)**

R.W. BRUGGEMAN: DIRECTOR OF ENGINEERING / CITY ENGINEER

JULY, 1981

PROJ. NO. 472-76-245-81047-000-000-001

**BENEFIT DISTRICT**



**NOTE:**

This project to be bid and constructed in accordance with all applicable City of Wichita specifications. Contractor shall supply and install all necessary and/or incidental material and furnish all labor necessary to make the drainage and street improvements function in accordance with the intent of the contract.

Type of Sub-grade Treatment shall be determined by the Field Engineer. Sub-grade Treatment may consist of Lime Treatment, Cement Treatment, Sub-grade Modification, or any combination of these.

The Contractor shall be responsible for preserving property irons. The Contractor shall be required to re-establish any property irons which are damaged or destroyed by his construction operations. Such irons shall be re-established by a Licensed Land Surveyor or a Licensed Professional Engineer in accordance with state laws.

Contractor shall inspect the site and satisfy himself as to existing conditions and circumstances prior to submitting his bid.

PLANS PREPARED BY  
DELAMATER, FREUND & ASSOCIATES, P.A.  
ENGINEERS AND ARCHITECTS  
WICHITA, KANSAS



B.M. 81.73 Std. Disc S.S. Conc. Wk. along N.S.  
Bridge on 55th St. across Big Slough

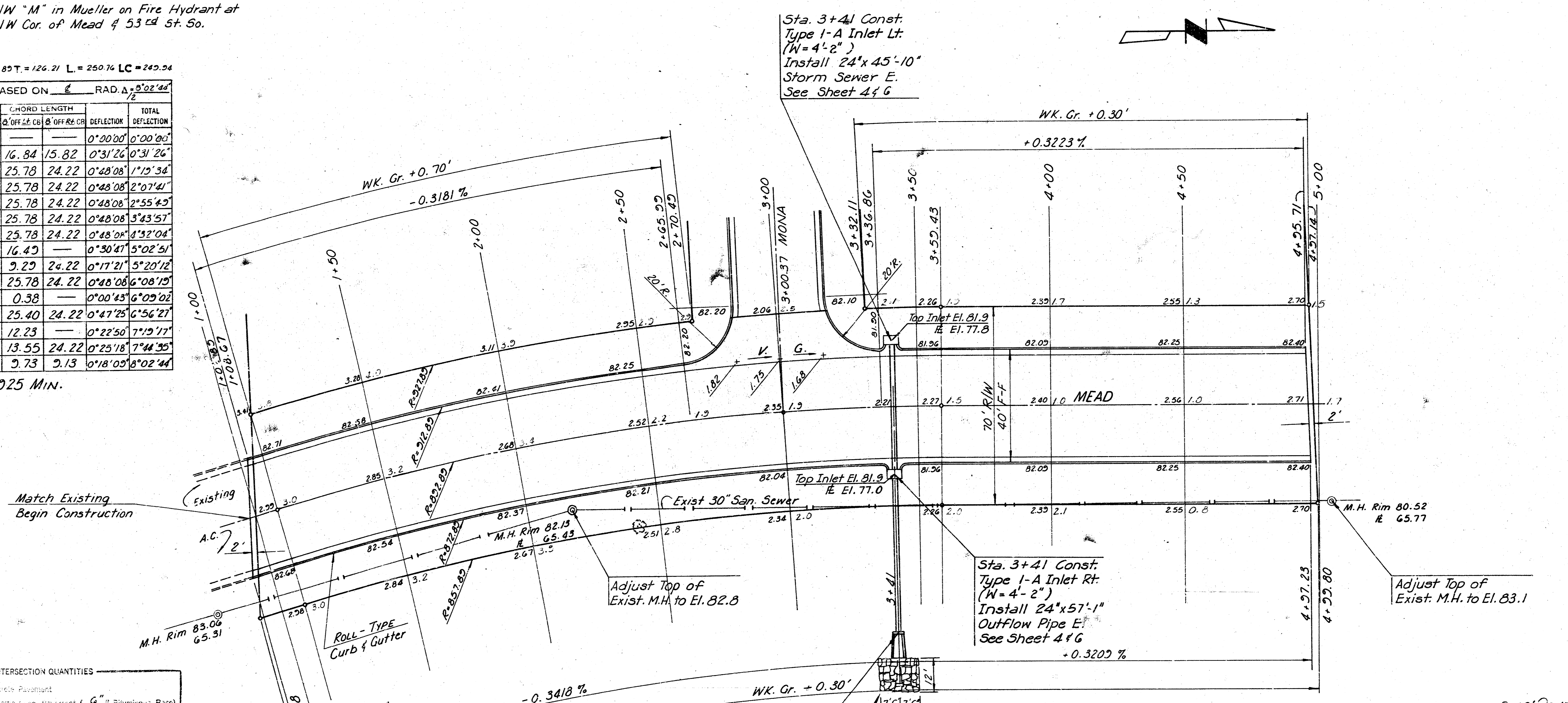
B.M. 84.56 NW "M" in Mueller on Fire Hydrant at  
NW Cor. of Mead & 53rd St. So.

$\Delta = 4'05.28''$   $R = 802.89'$   $T = 126.21'$   $L = 250.76'$   $LC = 249.54'$

CURVE DATA BASED ON  $\frac{1}{2}$  RAD.  $\Delta = 9'02.44''$

STA	ARC	CHORD LENGTH	DEFLECTION	TOTAL DEFLECTION
1+08.67			0°00'00"	0°00'00"
1+25	16.33	16.84	0°31'26"	0°31'26"
1+50	25.00	25.78	0°48'08"	1°12'34"
1+75	25.00	25.78	0°48'08"	2°07'41"
2+00	25.00	25.78	0°48'08"	2°55'45"
2+25	25.00	25.78	0°48'08"	3°43'57"
2+50	25.00	25.78	0°48'08"	4°32'04"
2+65.22	15.22	16.43	0°30'47"	5°02'51"
2+75	9.01	9.29	0°17'21"	5°20'12"
3+00	25.00	25.78	0°48'08"	6°08'19"
3+00.37	0.37	0.38	0°00'43"	6°09'02"
3+25	24.63	25.40	0°47'25"	6°56'27"
3+36.86	11.86	12.23	0°22'50"	7°19'17"
3+50	13.14	13.55	0°25'18"	7°44'35"
3+52.43	9.43	9.73	0°18'03"	8°02'44"

DEF./FT. = 1.925 MIN.



INTERSECTION QUANTITIES

124.18	S.Y.	8"	Concrete Pavement
42.25	S.Y.	4"	Asphaltic Curb, Pavement (G) Bituminous Base
42.25	S.Y.	4"	Bituminous Base
42.25	S.Y.	4"	Consolidated Curb & Gutter
42.25	S.Y.	4"	Belonged Curb
76.1	S.Y.	4"	Wet Well Pump
18.5	S.Y.	4"	Consolidated P.P.
27.77	S.Y.	4"	Relining Good
30.33	S.Y.	4"	Manhole
30.33	S.Y.	4"	Trunk Sewer
30.33	S.Y.	4"	Concrete & 5" Asphaltic Concrete Base

Sta. 3+41 Const.  
Type I-A Inlet Lt.  
(W=4'-2")  
Install 24"x45'-10"  
Storm Sewer E.  
See Sheet 4 & G

Adjust Top of  
Exist. M.H. to El. 82.8

Sta. 3+41 Const.  
Type I-A Inlet Rt.  
(W=4'-2")  
Install 24"x57'-1"  
Outflow Pipe E.  
See Sheet 4 & G

Adjust Top of  
Exist. M.H. to El. 83.1

Sta. 3+41 Const.  
Conc. Headwall 80'Rt.  
with Automatic Flap Gate  
See Sheet 4 & G

P.V.I.  
Elev. 81.90  
No V.C.

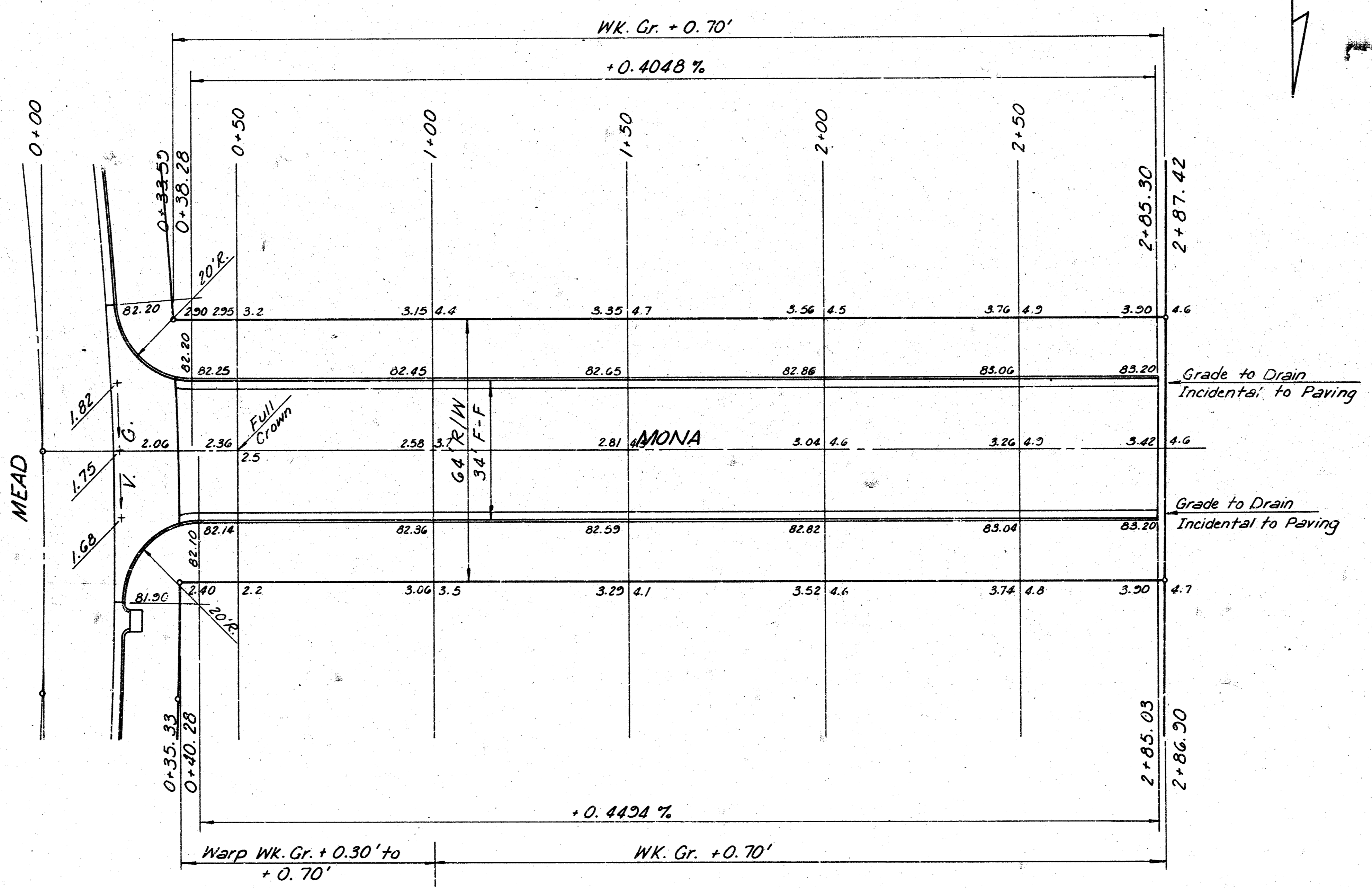
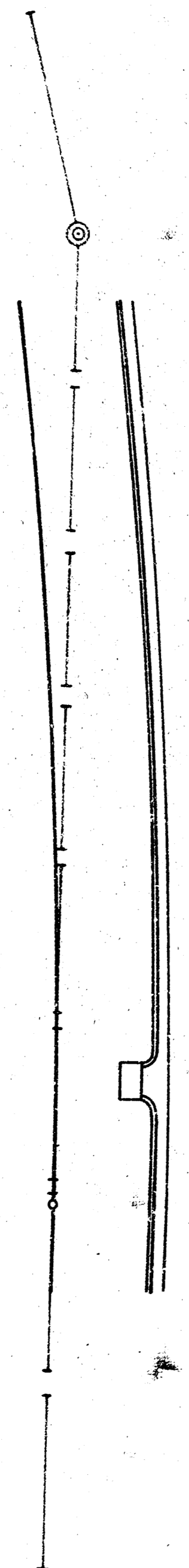
Install Type II  
Rip-Rap  
See Sheet 4

3-20' DRIVES

DEPARTMENT OF ENGINEERING  
R.W. BRUGGEMAN - DIR. OF ENGINEERING - CITY ENGINEER  
RIVERSIDE FOURTH ADDITION  
**MEAD**  
S.L. LOT 4 BLK. 7 TO N.L. LOT 3 BLK. 6  
CITY OF WICHITA PROJ. NO. 472 - 76-245-8047-000-001

**DELAMATER, FREUND & ASSOCIATES, P.A.**  
ENGINEERS & ARCHITECTS  
WICHITA, KANSAS

SCALE 1" = 20' DATE July, 1981 DWG. NO. 89-LP-2



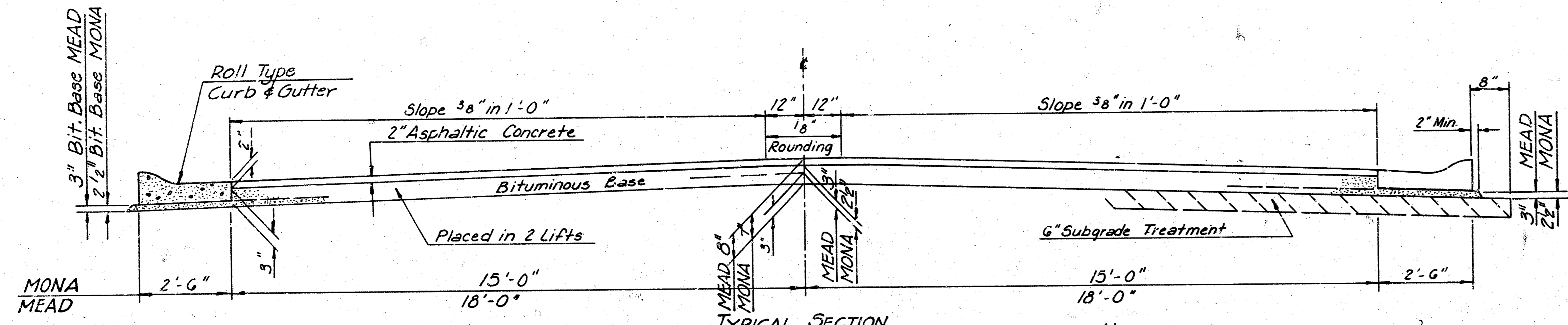
SURV. P.L.T. DES. DR. TR. C.D. APP.

DEPARTMENT OF ENGINEERING  
R.W. BRUGGEMAN - DIR. OF ENGINEERING - CITY ENGINEER

RIVERSIDE FOURTH ADDITION  
**MONA**  
W.L. LOT 1 BLK. 6 TO W.L. MEAD  
CITY OF WICHITA PROJ. NO. 472-76-245-B1047-000-000-001

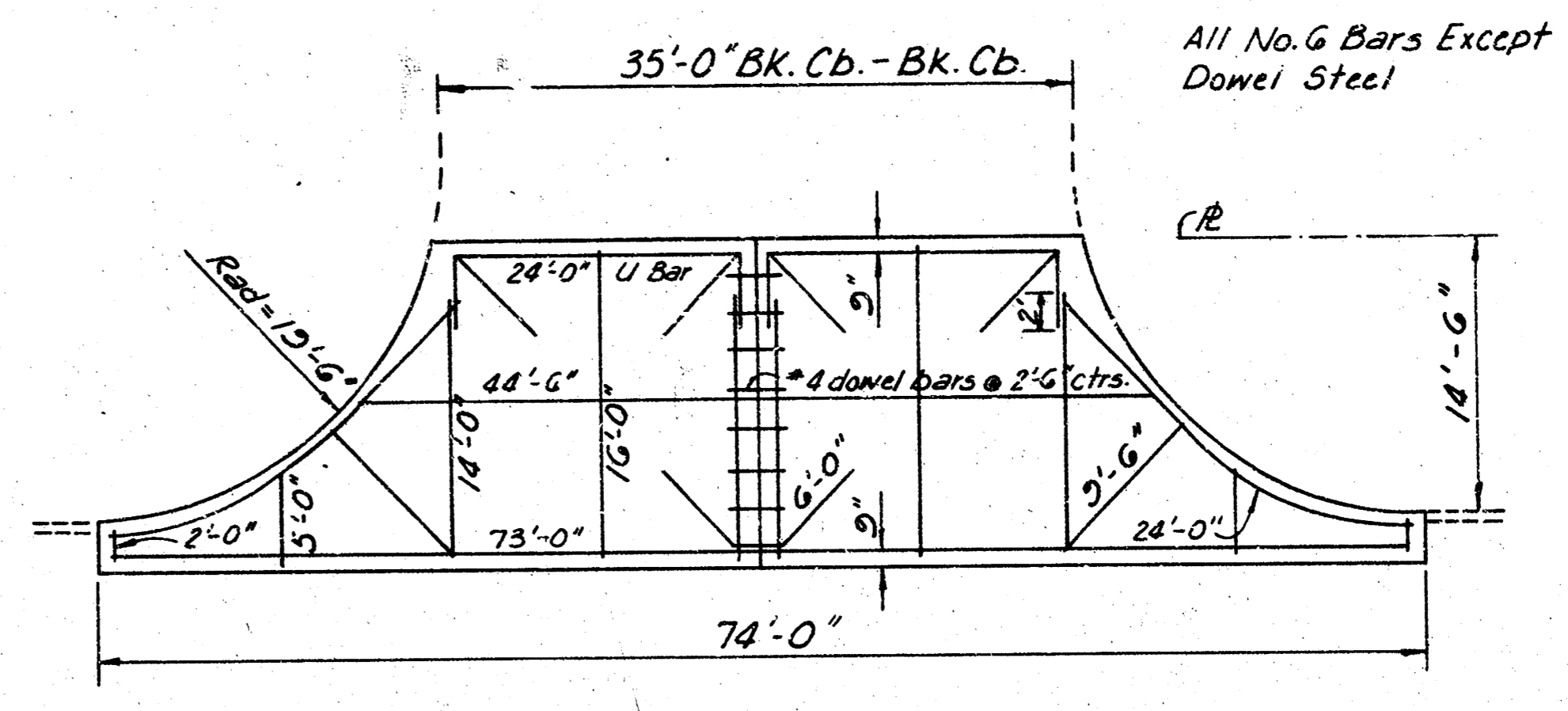
**DA** DELAMATER, FREUND & ASSOCIATES, P.A.  
ENGINEERS & ARCHITECTS  
WICHITA, KANSAS

SCALE: 1" = 20' DATE: July, 1981 DWG. NO. 89-LP-3



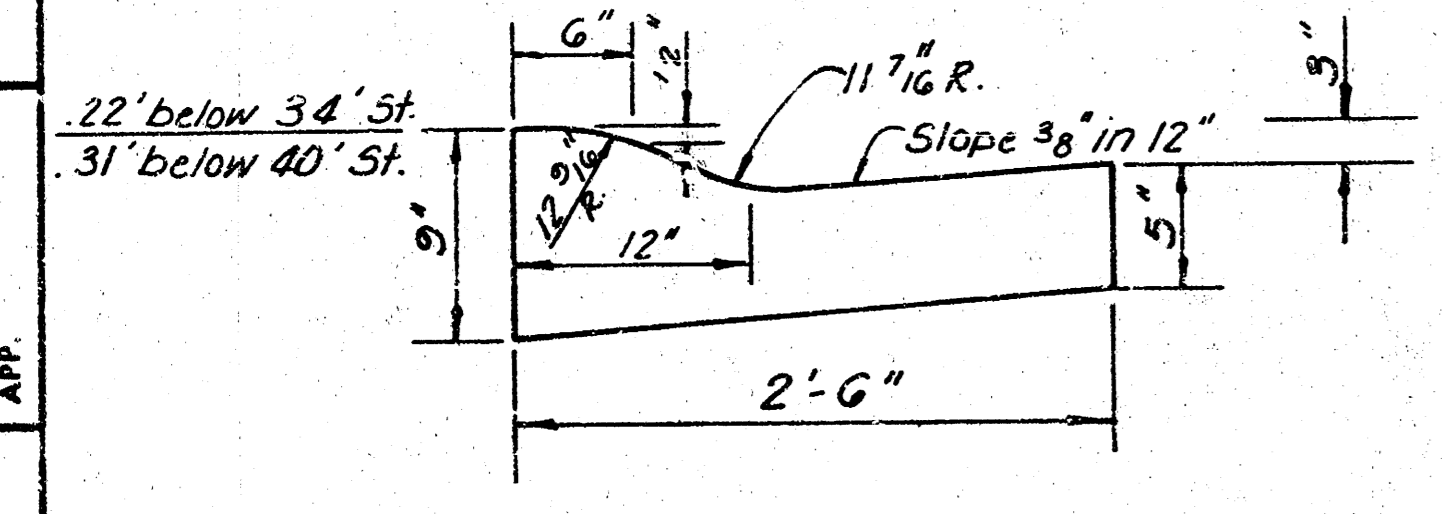
**TYPICAL SECTION**  
 The A.C. Pavement between the combined curb and gutter shall be paid as Sq. Yds. 8\"/>

**NOTE:**  
 A tack coat of emulsified asphalt (SS-1H) shall be applied at an approximate rate 0.05 gallons per sq. yd. between lifts of asphalt materials when ordered by the engineer. Tack coat will not be paid for directly but shall be considered as subsidiary to price bid for asphalt pavement.  
 Bituminous base and asphaltic concrete wearing surface shall be placed with a layout machine having automatic controls for crown and grade. Construction joints in each lift shall be staggered a minimum distance of 1' with joints in preceding lifts and placed such that a joint will be constructed on the centerline in the top lift.

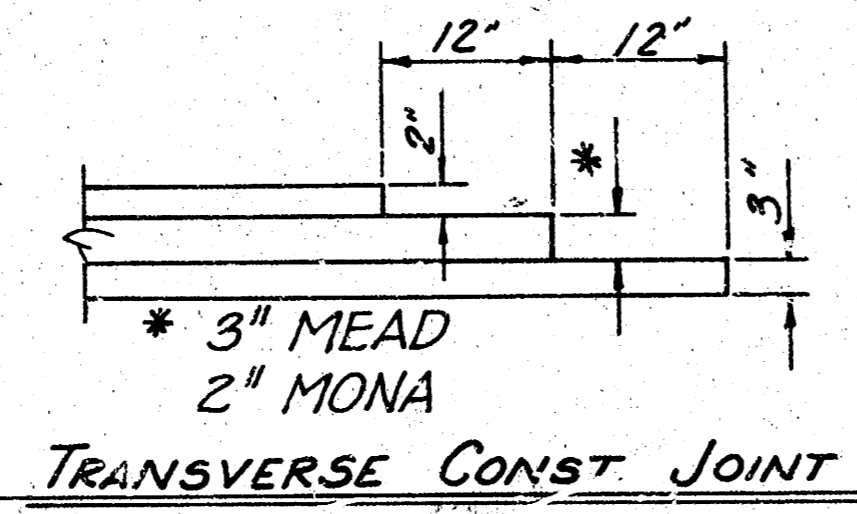


No. G # Bars	
2	24'-0" U Bars
6	6'-0" "
1	4'-6" "
1	7'-0" "
2	2'-0" "
2	5'-0" "
2	3'-6" "
2	2'-0" "
4	14'-0" "
2	16'-0" Bars
370.5 lin. ft.	

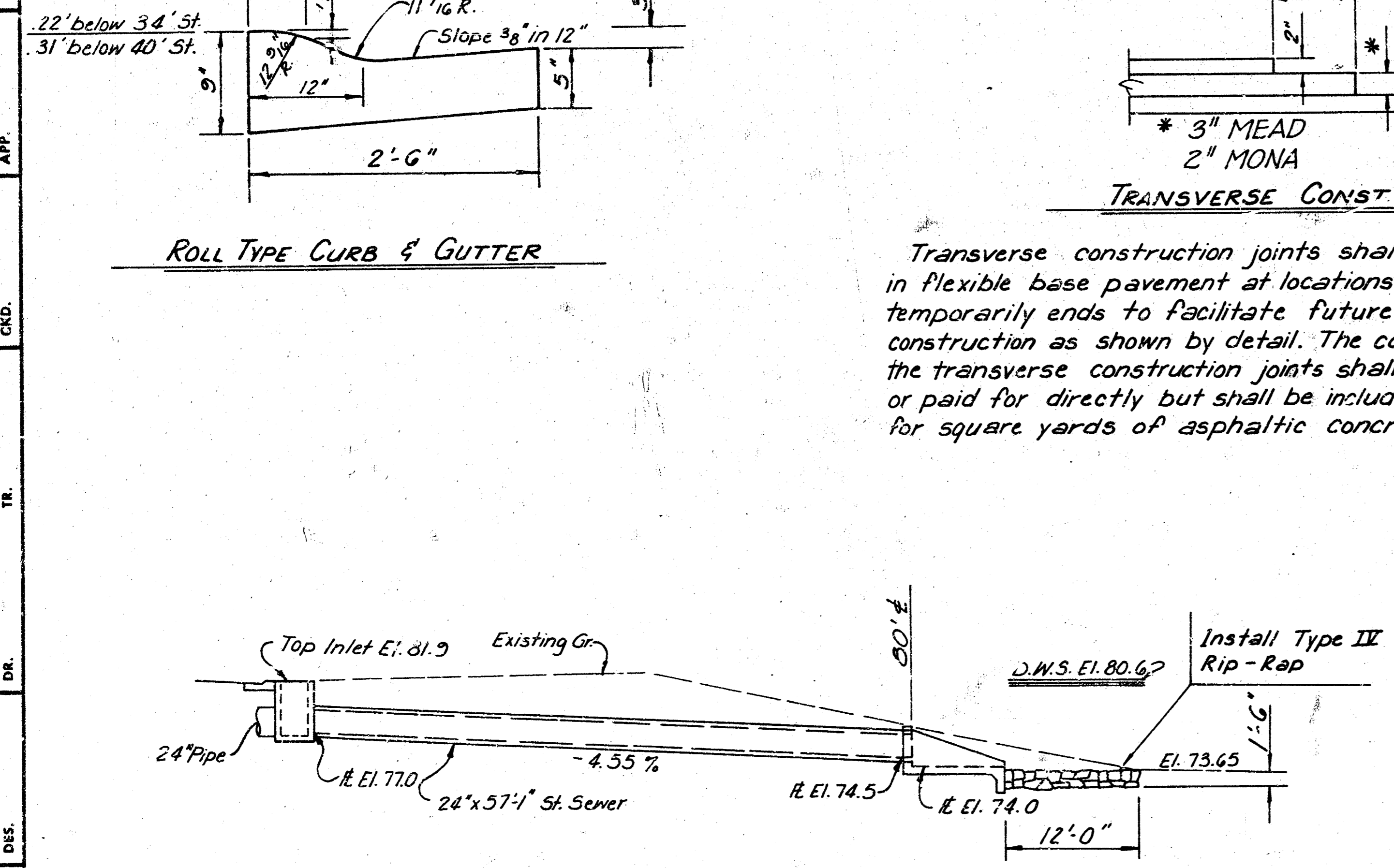
**CONCRETE VALLEY GUTTER**  
 (5" Conc. & 3" Bit. Base)



**ROLL TYPE CURB & GUTTER**



Transverse construction joints shall be constructed in flexible base pavement at locations where pavement temporarily ends to facilitate future pavement construction as shown by detail. The cost of constructing the transverse construction joints shall not be measured or paid for directly but shall be included in the bid price for square yards of asphaltic concrete pavement.

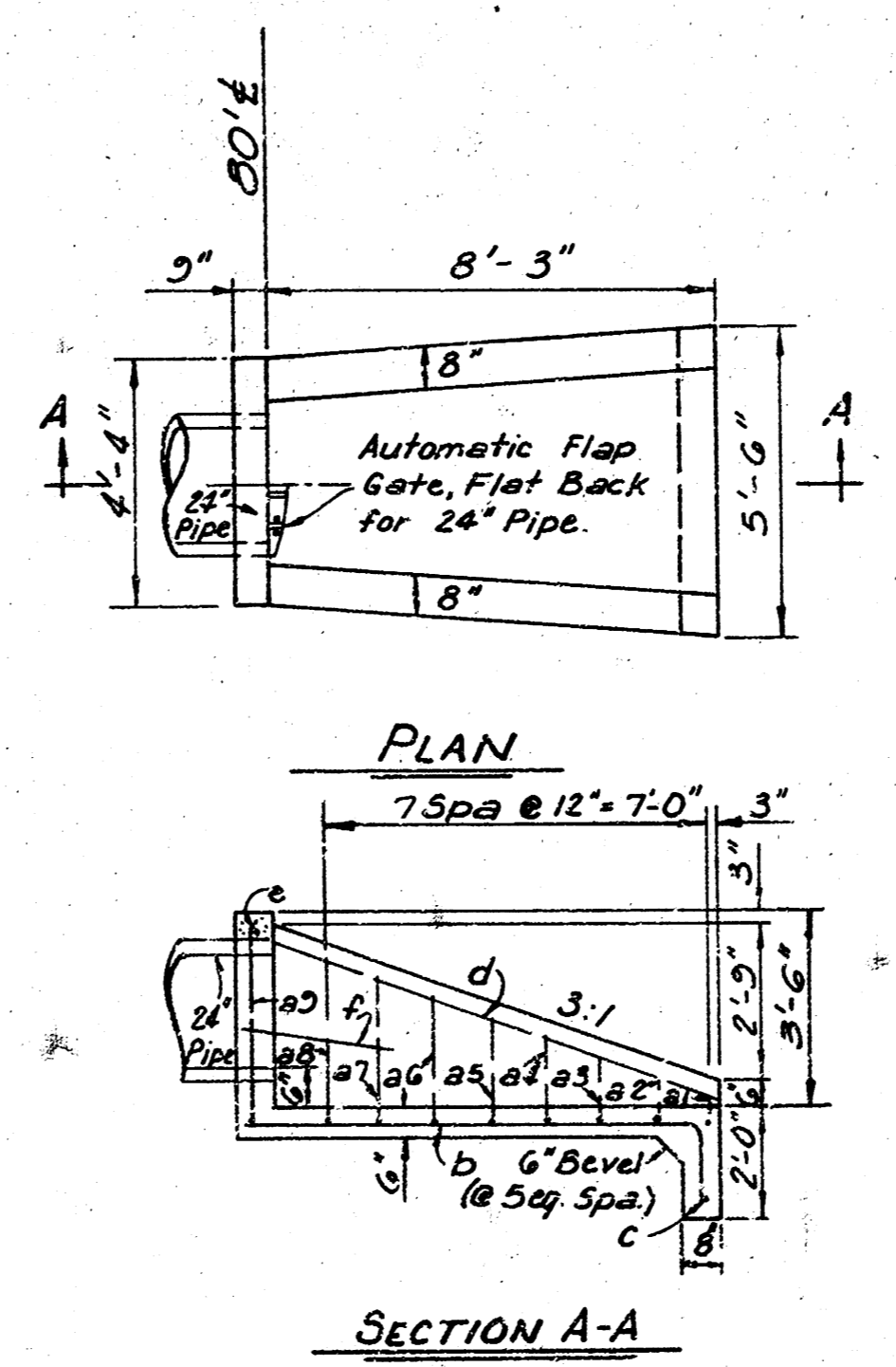


**DETAIL OF OUTFLOW PIPE**

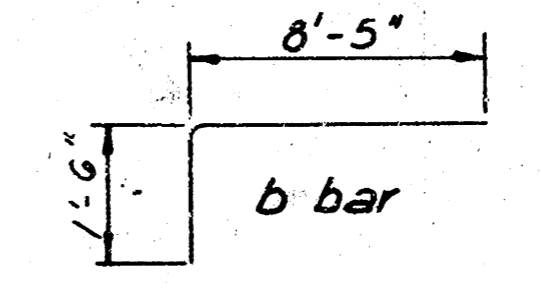
**NOTE:** See Sheet 6 for profile and station grades for 24" Storm Sewer. See Sheet 2 for plan.

TABLE OF QUANTITIES				
BAR	NUMBER	LENGTH	SHAPE	WEIGHT
a1	1	6'-1"	[U-Bar]	4.06
a2	1	6'-1"	[U-Bar]	4.40
a3	1	7'-2"	[U-Bar]	4.79
a4	1	7'-8"	[U-Bar]	5.12
a5	1	8'-2"	[U-Bar]	5.45
a6	1	8'-5"	[U-Bar]	5.85
a7	1	9'-3"	[U-Bar]	6.18
a8	1	9'-9"	[U-Bar]	6.51
a9	1	10'-7"	[U-Bar]	7.07
b	6	5'-11"	[Bar]	55.75
c	1	5'-3"	[Bar]	3.51
d	2	3'-0"	[Bar]	12.02
e	1	4'-0"	[Bar]	2.67
f	2	5'-0"	[Bar]	6.68
Total Rebar, Lbs.				114.06
Concrete, C.Y.				2.23

All Rebar to be # 4



**HEADWALL FOR 24" PIPE**



Increment 4"	
a1	4'-9"
a2	4'-7"
a3	4'-6"
a4	4'-4"
a5	4'-2"
a6	4'-1"
a7	3'-9"
a8	3'-7"

DEPARTMENT OF ENGINEERING  
 R.W. BRUGGEMAN, DIR. OF ENGINEERING-CITY ENGINEER  
 RIVERSIDE FOURTH ADDITION  
**TYPICAL SECTION**  
**& DRAINAGE DETAILS**  
 CITY OF WICHITA PROJ. NO. 472-76-245-81047-000-000-001  
 DELAMATER, FREUND & ASSOCIATES, F.A.  
 ENGINEERS & ARCHITECTS  
 WICHITA, KANSAS  
 SCALE: \_\_\_\_\_ DATE: July, 1981 DWG. NO. 89-LP-4