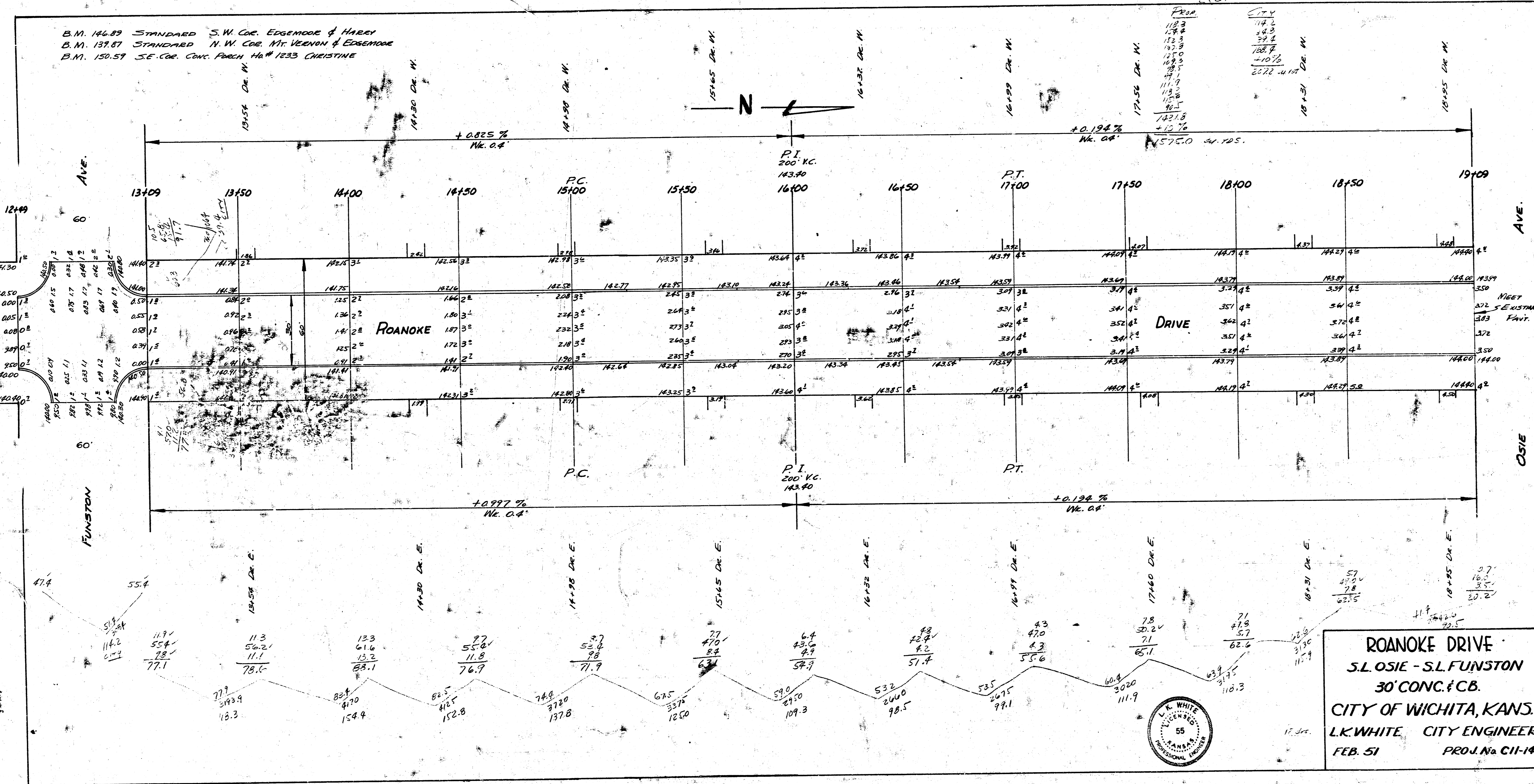


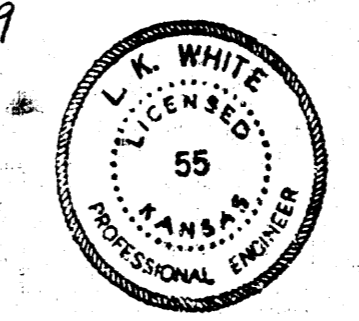
B.M. 146.89 STANDARD S.W. COR. EDGEWOOD & HARRY  
 B.M. 139.87 STANDARD N.W. COR. MT. VERNON & EDGEWOOD  
 B.M. 150.57 SE. COR. CONC. PORCH 44# 1233 CHRISTINE

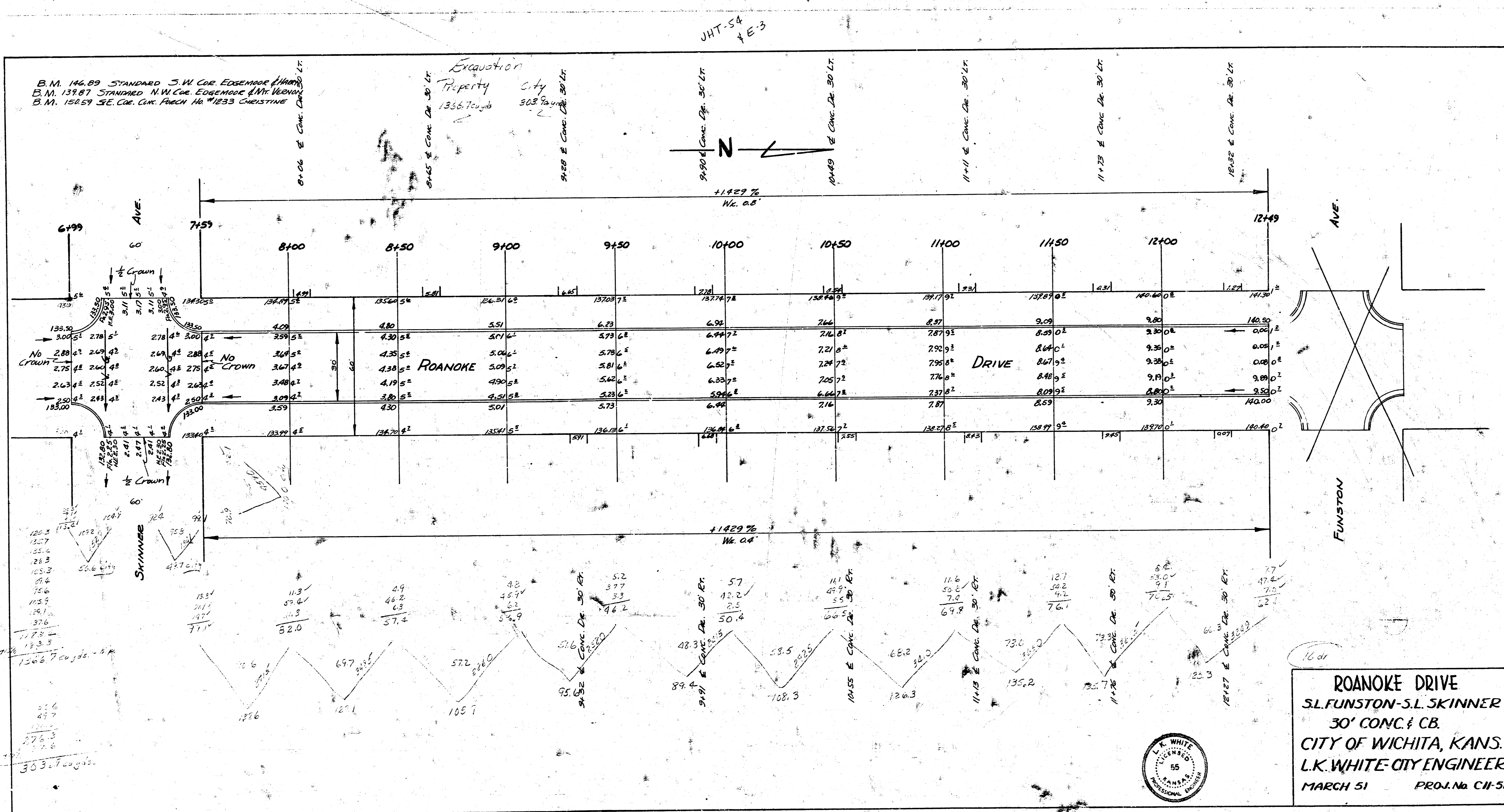
JHT 54

EXC.



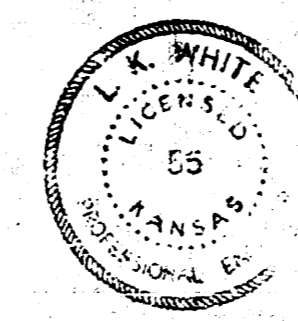
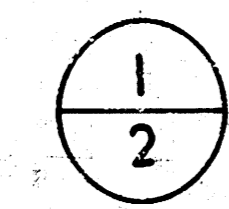
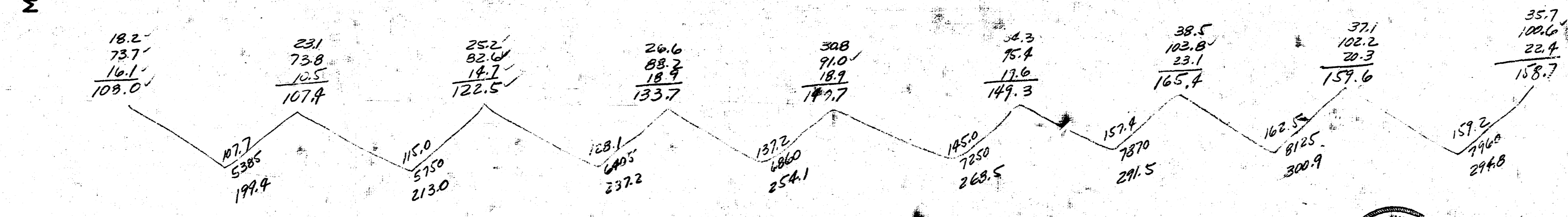
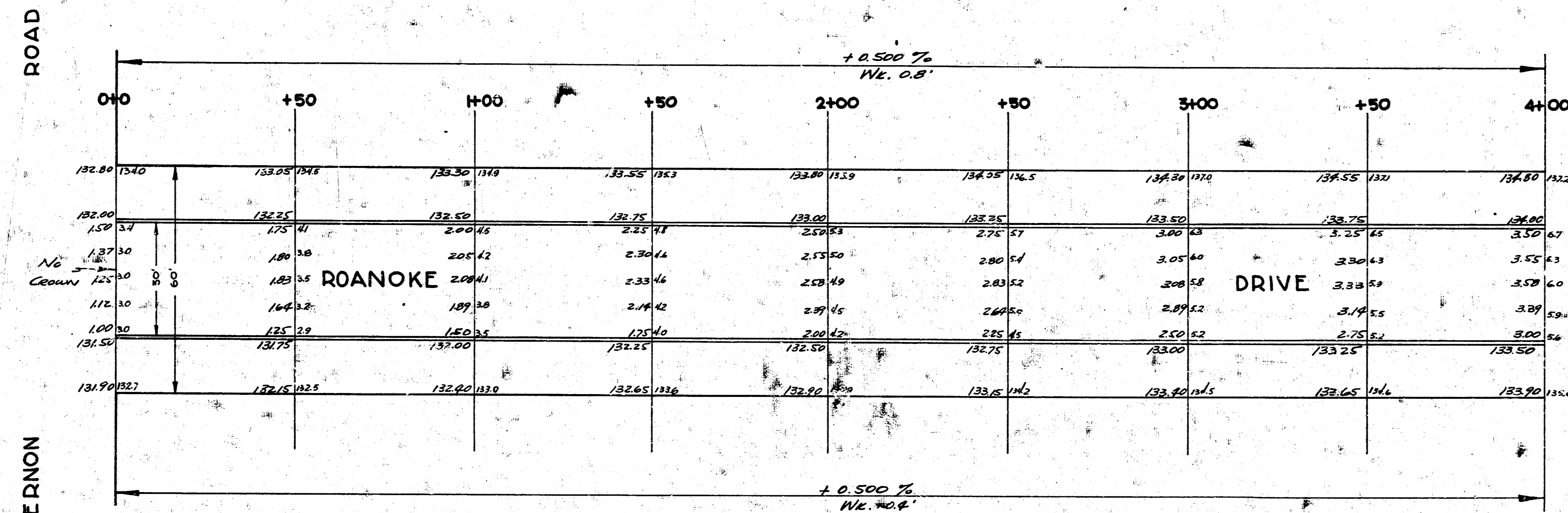
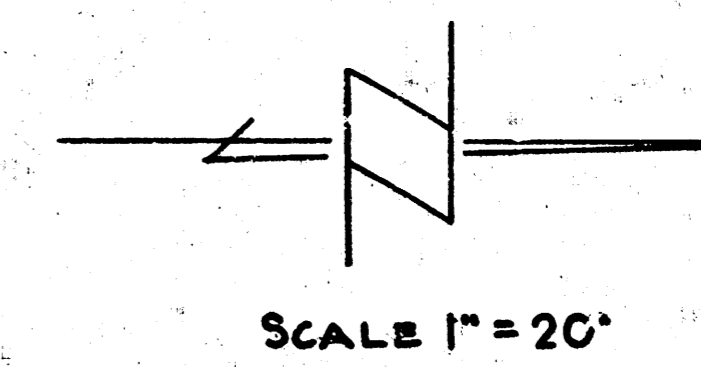
**ROANOKE DRIVE**  
 S.L. OSIE - S.L. FUNSTON  
 30' CONC. & CB.  
 CITY OF WICHITA, KANS.  
 L.K. WHITE, CITY ENGINEER  
 FEB. 51 PROJ. No. C11-14



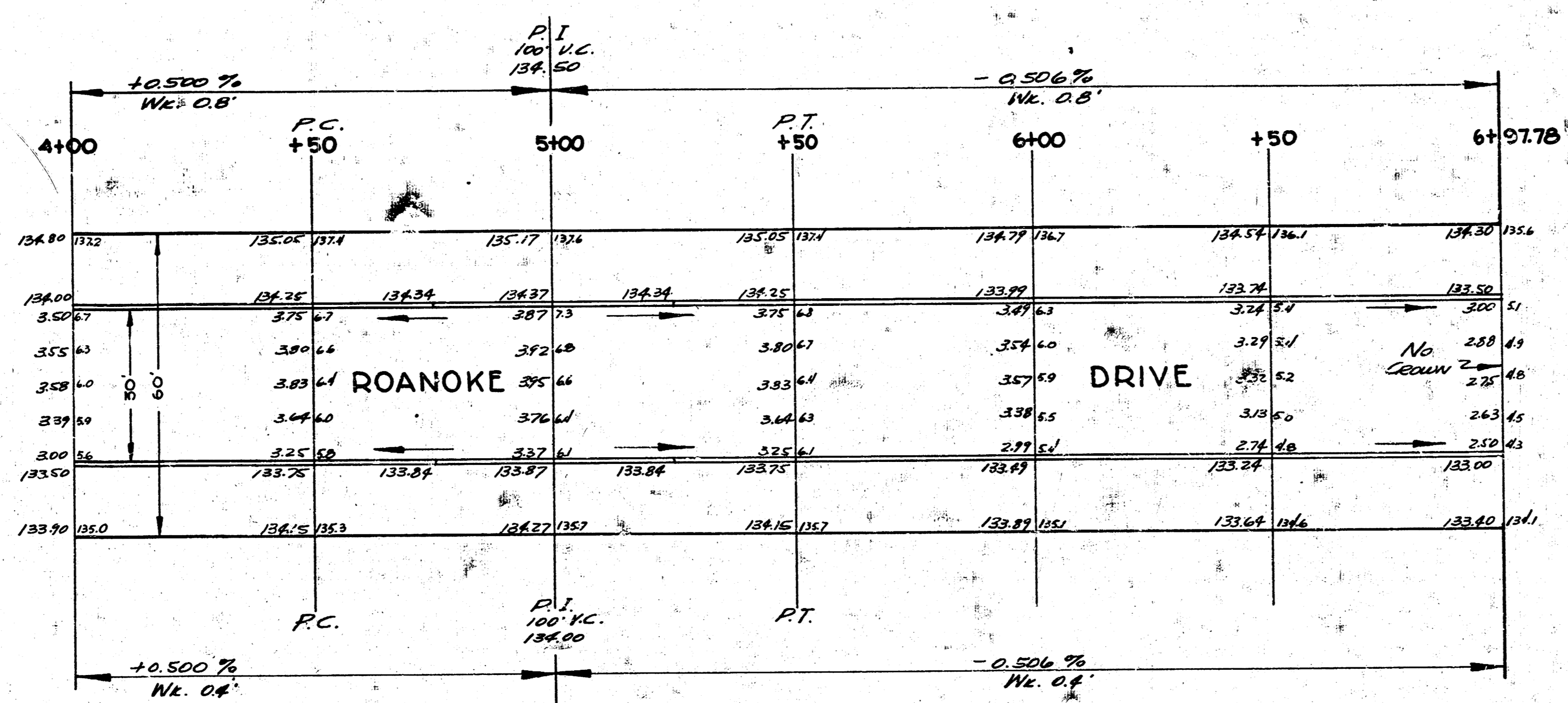
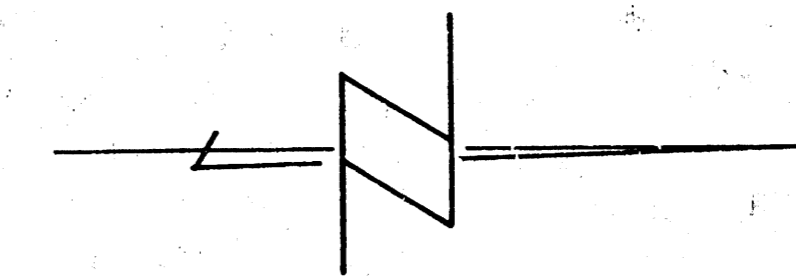


B.M. 14689 Standard S.W. Edgemoor & Harry  
 B.M. 13987 Standard N.W. Cor. MI Vernon & Edgemoor

Prop. City  
 3679.5  
 +10%  
 4069.5 at 105.

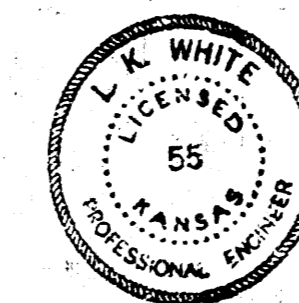
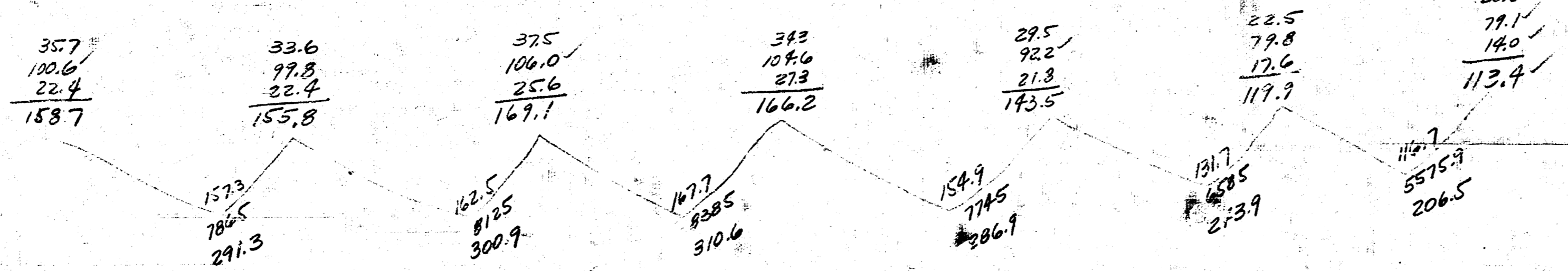


ROANOKE DRIVE  
 N. MT. VERNON RD. TO S. SKINNER ST  
 30' Conc. Cb.  
 CITY OF WICHITA, KANSAS  
 L.K. WHITE CITY ENGINEER  
 OCT. 1951 PROJ. NO. C-11-199



ST.

SKINNER



2/2