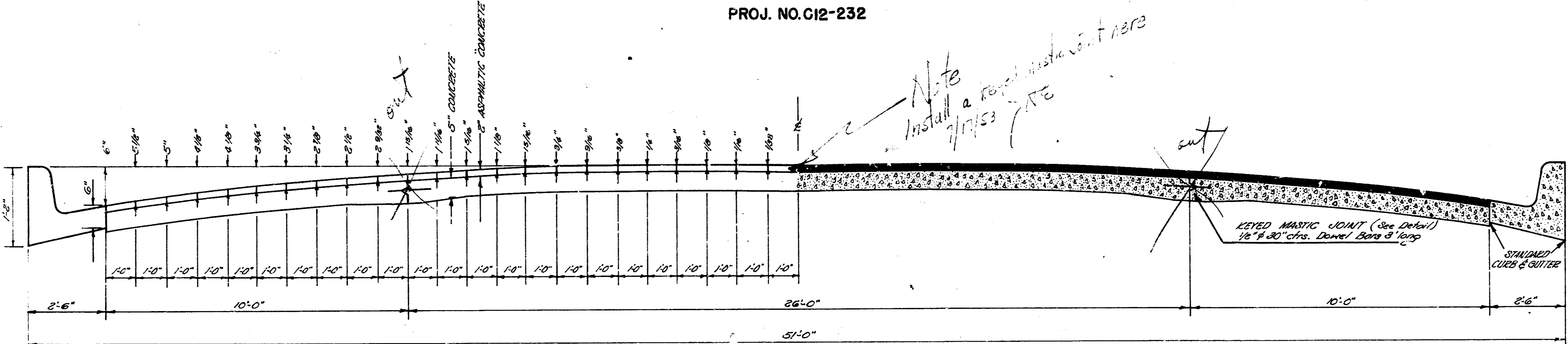


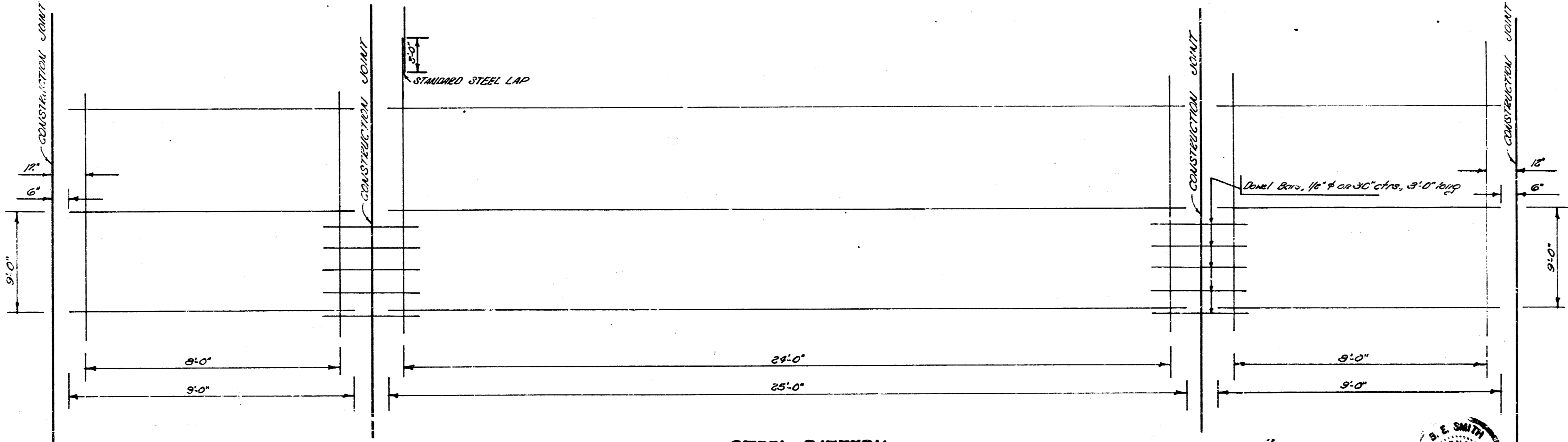
ROCHESTER AVENUE

NL 14TH ST. TO S.L. 15TH ST.

PROJ. NO. G12-232

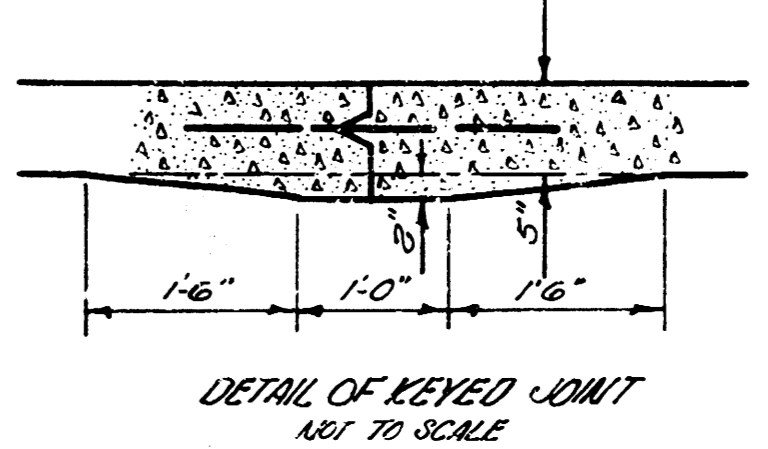


TYPICAL SECTION
1/4\"/>



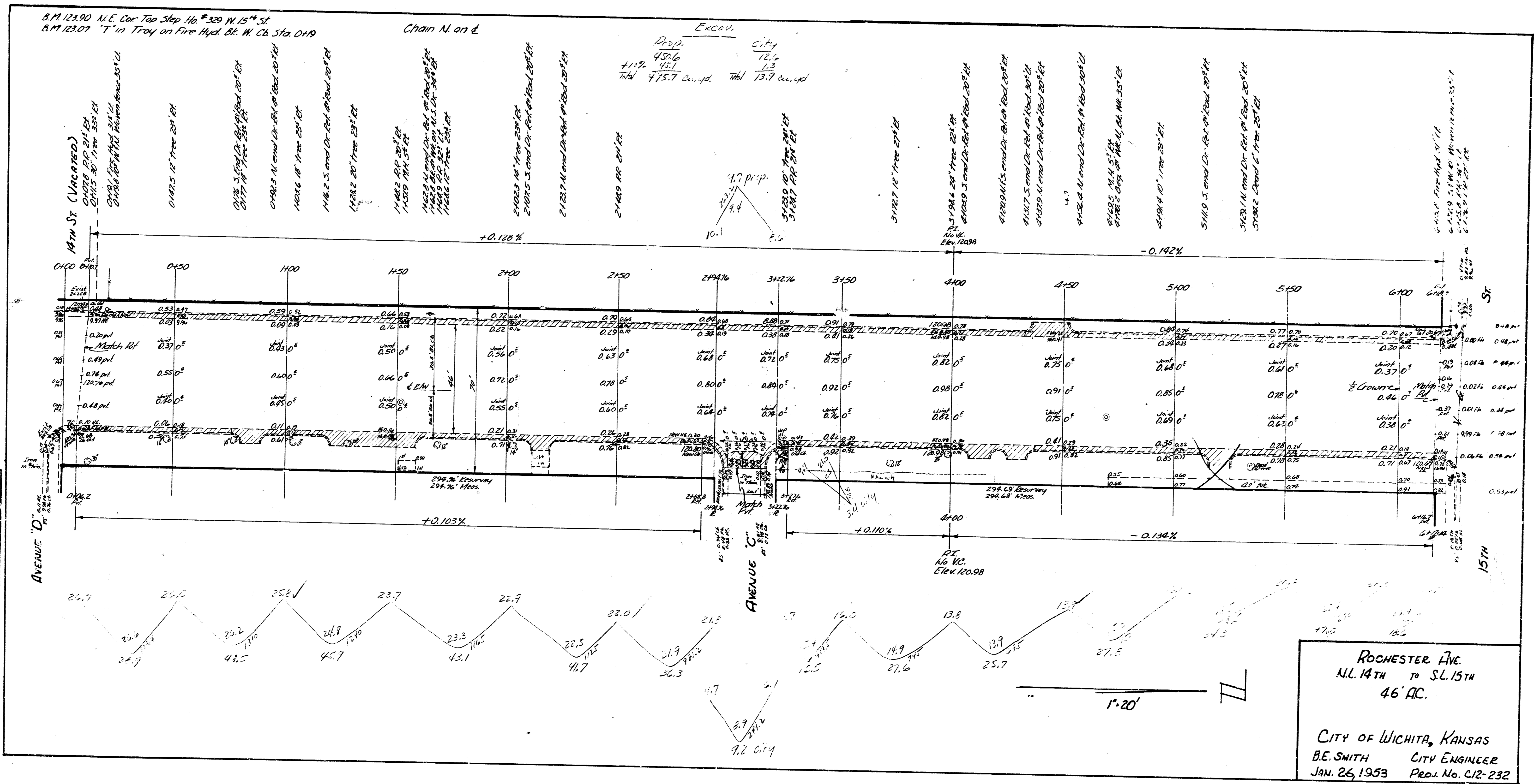
STEEL PATTERN
1/4\"/>

USE #4 & #5 BARS EXCEPT WHERE OTHERWISE NOTED



DETAIL OF KEVED JOINT
1/4\"/>





Survey Method: BK 1470
Plan: LTP
Checked: JH

B.M. 123.90 N.E. Cor. Top Shop Ho. #320 W. 15th St.
B.M. 123.07 "T" in Tray on Fire Hydr. Bl. W. Ch. Sta. 0+19

Chain N. on d.

Excav.
D. 2.02
45.26
+1.17
775.7
C. 1.4
13.4
1.3
13.7

