

STREET IMPROVEMENTS

for

PINECREST STREET

From the N. Line Lot 5, UNIVERSITY GARDENS 2ND ADDN., and the S. Line of Lot 2, WICHITA LAND ADDN. to the N. Line of LOOMAN.

PROJECT NUMBER

472-76-245-81339-000-000-001

GENERAL NOTES

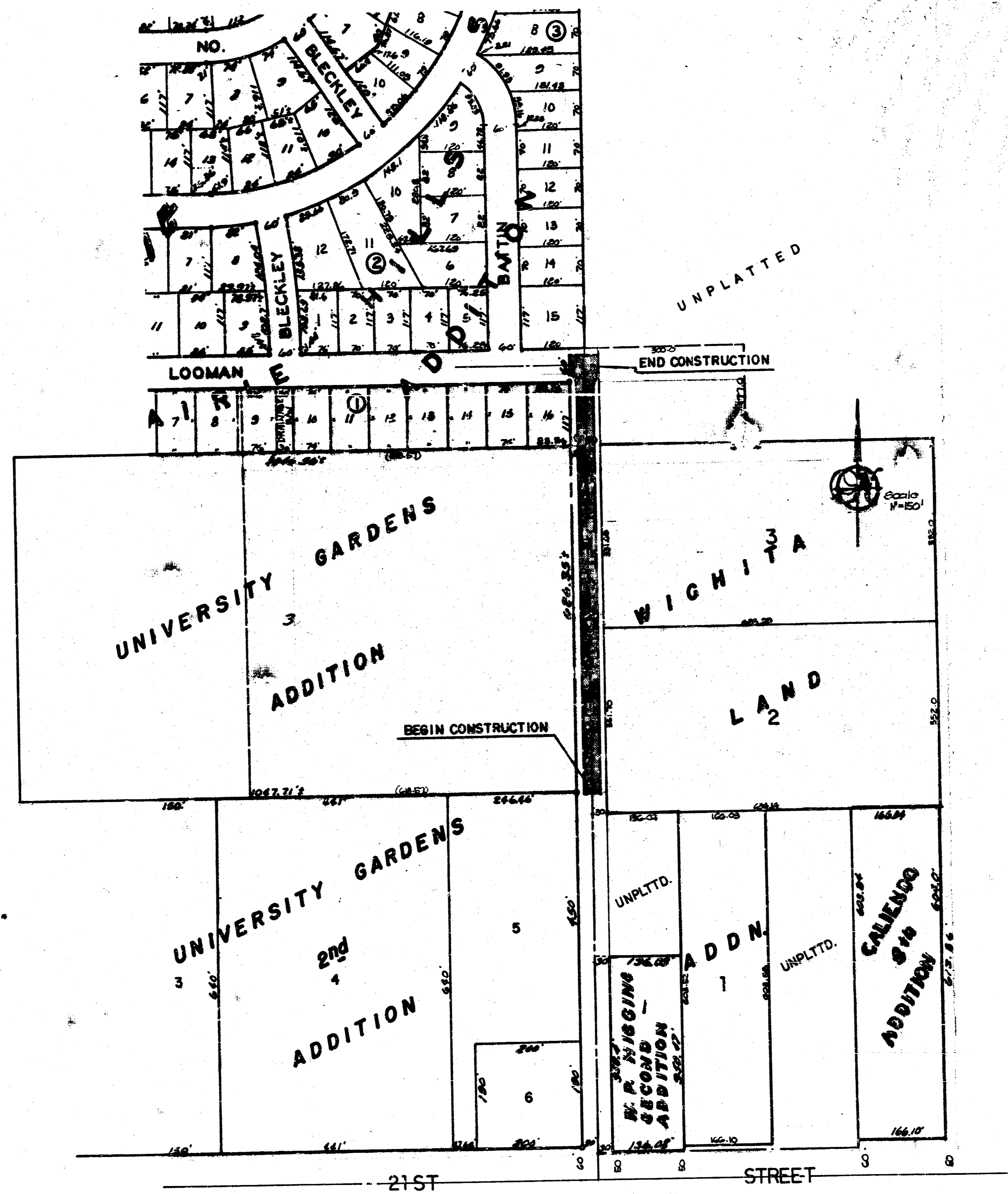
No more than 3 drives 30 feet in width, or equivalent combinations thereof, are to be constructed with this project.

The Contractor shall be responsible for preserving property irons. The Contractor will be required to re-establish any property irons which are damaged or destroyed by his construction operations. Such irons shall be re-established by a licensed land surveyor or a licensed professional engineer in accordance with state laws.

Trees and shrubs in public right-of-way which are in direct conflict with proposed new construction shall be removed by the Contractor with the Engineer's approval. Trees and shrubs which are not in direct conflict with proposed new construction shall be saved and protected from damage.

The Contractor shall contact the owner(s) of Lot 16, Block 1, Prairie Hills Addition at least 14 days prior to beginning construction to allow the owner(s) the opportunity to remove and/or relocate the shed and fencing encroaching street right-of-way on his own.

Contractor shall contact Cablevision and K. G. & E. in order to make arrangements for the lowering or relocation of their underground lines prior to proceeding with construction.



CITY of WICHITA, KANSAS

MICHAEL E. LINDEBAK
CITY ENGINEER

INDEX of SHEETS

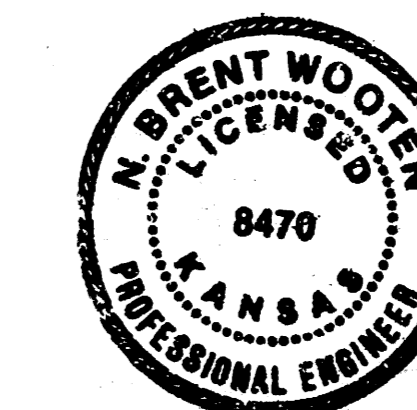
Title sheet	_____	8-1
Typical Section	_____	2
Raving Plans	_____	3-4
Storm Sewer Plans	_____	5
Manhole Detail	_____	6-7
Inlet Detail	_____	7
Cross Sections	_____	8-9

BENCHMARKS

- 33' east and 42' north of E 21st St. and Oliver intersection Elev. = 217.52 city datum
- 1' cut in top of curb on side of Pinecrest, 10' south of N. Lot 5, University Gardens 2nd Addn. Elev. = 207.03
- N. Rim manhole, STA. 3+165, 20' rt. Elev. = 192.15
- N. Rim manhole, STA. G+130, 20' rt. Elev. = 194.50
- 1' cut in top of inlet, N. side Looman. Elev. = 195.51

REVISED MANHOLE FROM TYPE 'B' OR 'C' TO 'A' SHALL ON OCT 21-87
SHEET 0-A HAS BEEN REMOVED.

TITLE SHEET



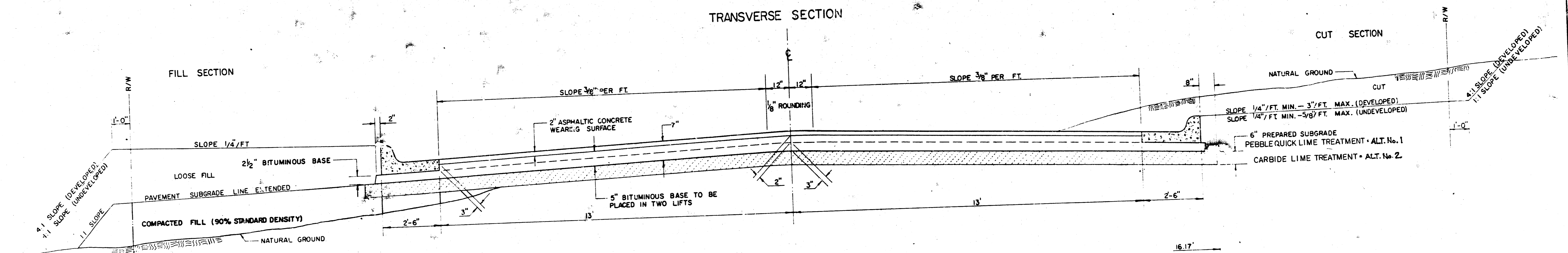
BAUGHMAN COMPANY, P.A.
SURVEYING & ENGINEERING
310-262-7771 • 315 E. 10th • WICHITA, KANSAS 67211

Project: N. Pinecrest Street
Date: February 27, 2019

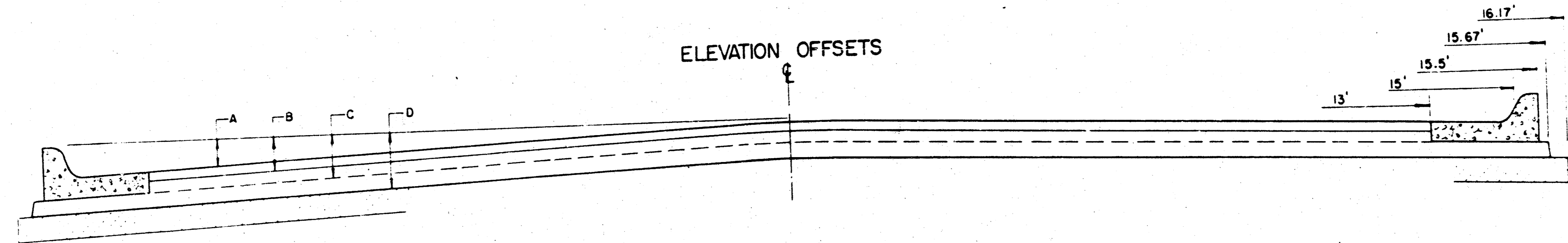
BENEFIT DISTRICT

TYPICAL 3' PAVEMENT DETAILS

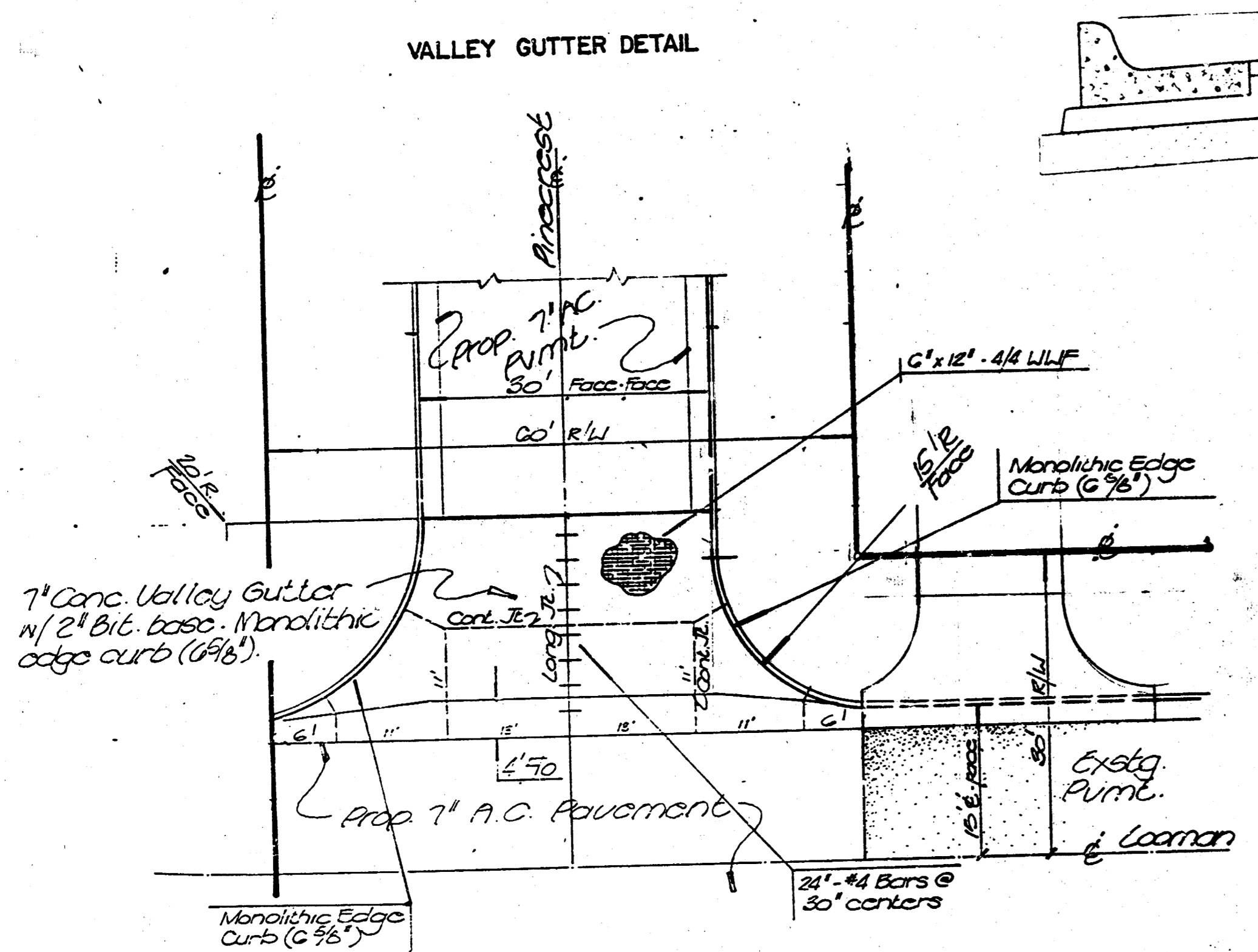
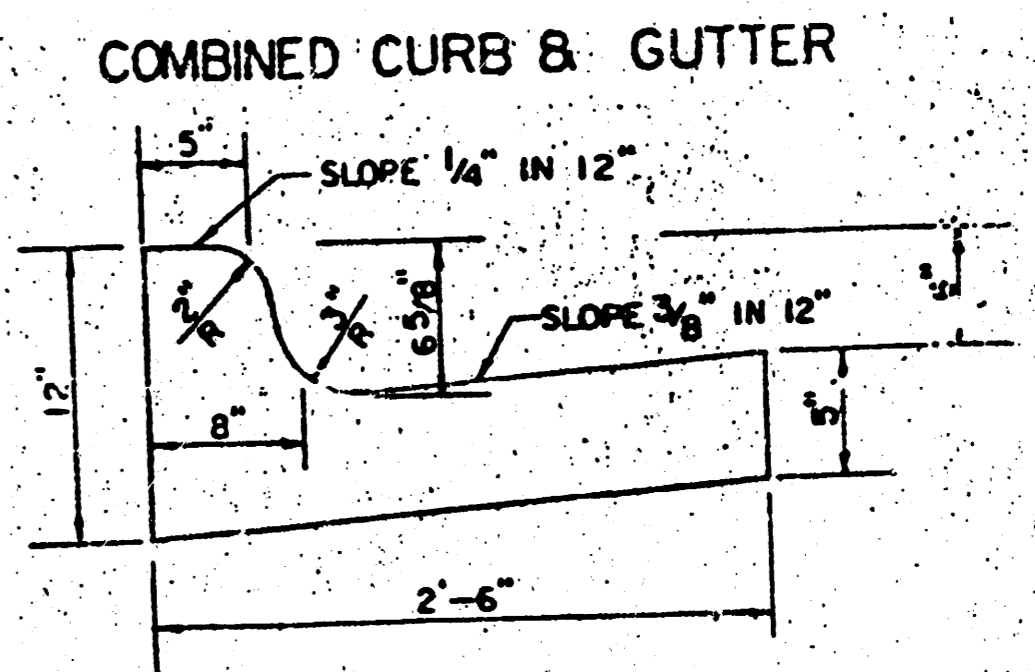
TRANSVERSE SECTION



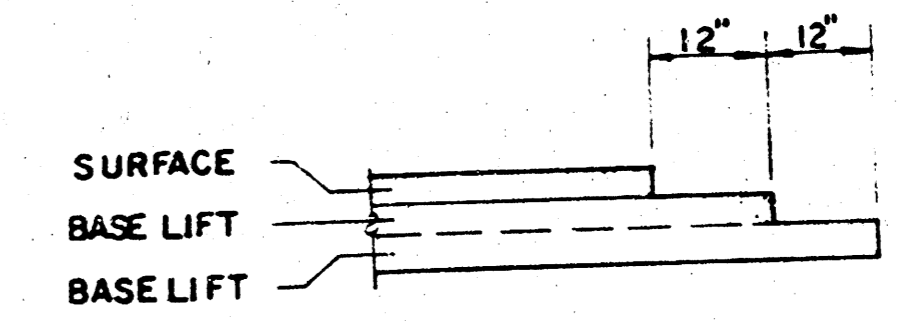
ELEVATION OFFSETS



	DISTANCE FROM CENTERLINE (LT. & RT.)											
	0'	2'	4'	6'	7.5'	10'	12'	13'	15'	15.5'	15.67'	16.17'
A. TOP OF CURBS TO TOP OF SURFACE LIFT	0.10	0.14	0.21	0.27	0.32	0.39	0.46	0.49	—	—	—	—
B. TOP OF CURBS TO TOP OF UPPER BASE LIFT	0.27	0.31	0.38	0.44	0.49	0.56	0.63	0.66	—	—	—	—
C. TOP OF CURBS TO TOP OF LOWER BASE LIFT	0.44	0.49	0.57	0.64	0.70	0.79	0.87	0.90	0.98	1.00	1.00	—
D. TOP OF CURBS TO TOP OF SUBGRADE	0.69	0.73	0.80	0.87	0.93	1.01	1.08	1.12	1.19	1.21	1.21	1.23



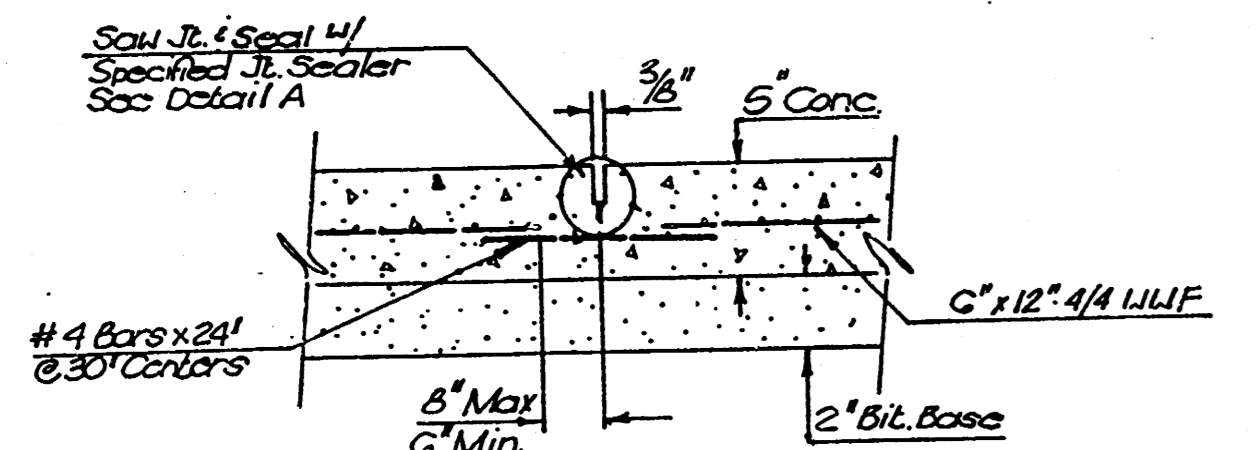
TRANSVERSE CONSTRUCTION JOINTS



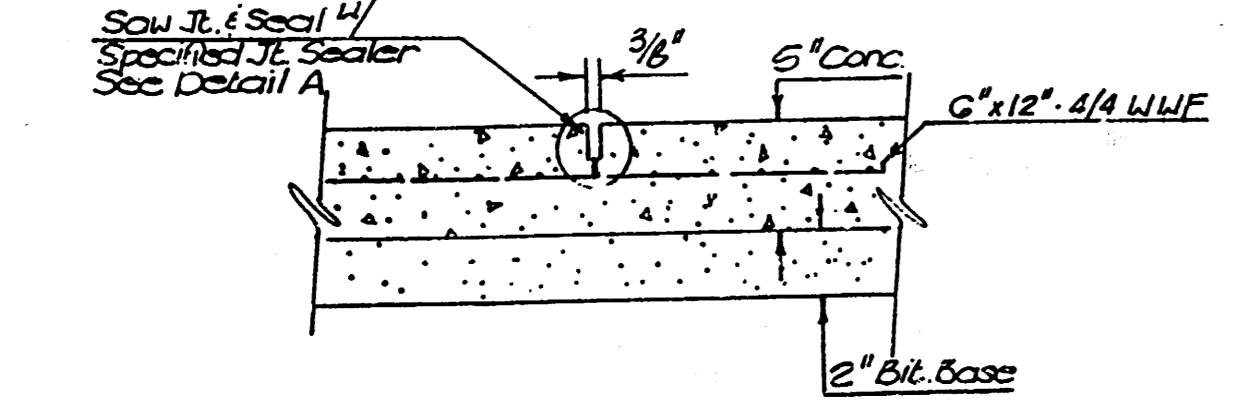
GENERAL NOTES

- 1) THE ASPHALTIC CONCRETE PAVEMENT BETWEEN THE COMBINED CURB AND GUTTER SHALL BE PAID AS SQUARE YARDS OF 7" ASPHALTIC CONCRETE (5" BITUMINOUS BASE).
- 2) THE BITUMINOUS BASE UNDER AND BEHIND THE COMBINED CURB AND GUTTER SHALL BE PAID AS SQUARE YARDS OF 2 1/2" BITUMINOUS BASE.
- 3) A TACK COAT OF EMULSIFIED ASPHALT (SC-1H OR CSS-1H) SHALL BE APPLIED AT AN APPROXIMATE RATE OF 0.05 GALLONS PER SQUARE YARD BETWEEN EACH LIFT OF ASPHALTIC MATERIAL.
- 4) BITUMINOUS BASE AND ASPHALTIC CONCRETE WEARING SURFACE SHALL BE PLACED WITH A LAYDOWN MACHINE HAVING AUTOMATIC CONTROLS FOR LINE AND GRADE.
- 5) CONSTRUCTION JOINTS IN EACH LIFT SHALL BE STAGGERED A MINIMUM DISTANCE OF ONE (1) FOOT FROM JOINTS IN PRECEDING LIFTS AND PLACED SO THAT A JOINT WILL BE CONSTRUCTED ON THE CENTERLINE OF THE TOP LIFT.
- 6) CONTRACTOR TO BID ONLY ONE SUBGRADE TREATMENT ALTERNATE WHEN ALTERNATES ARE PROVIDED IN THE PROPOSAL AND CONTRACT. THE ALTERNATE CHOSEN BY THE SUCCESSFUL BIDDER SHALL BE USED IN CONSTRUCTING THIS PROJECT.

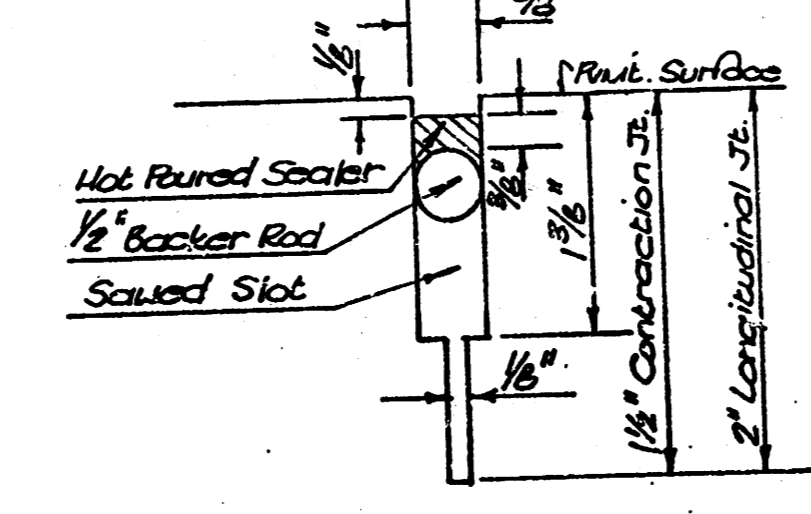
LONGITUDINAL JOINT DETAIL



CONTRACTION JOINT DETAIL



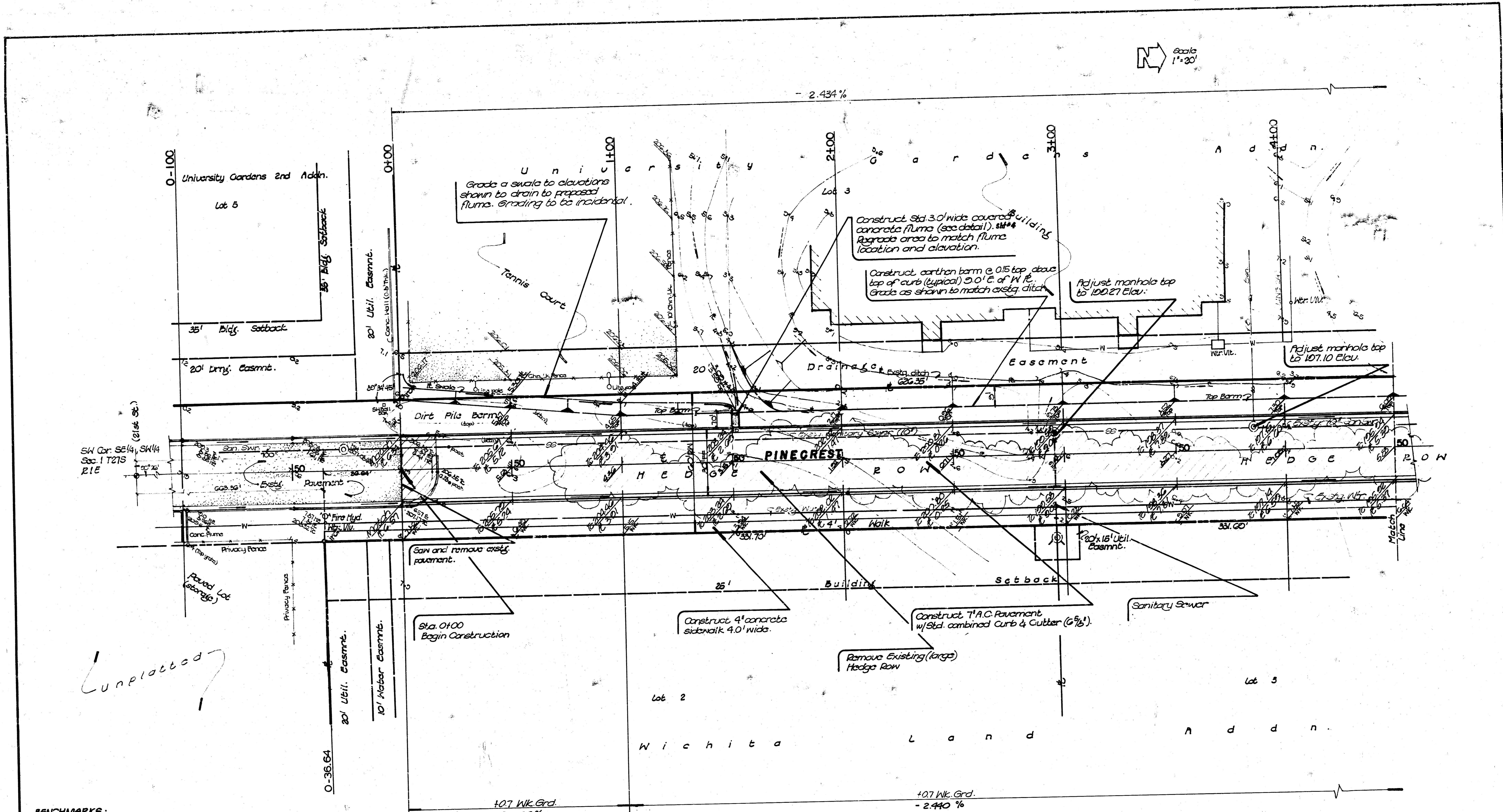
DETAIL A



PINECREST STREET
7 INCH RESIDENTIAL ASPHALTIC CONCRETE PAVEMENT WITH 5 INCH BITUMINOUS BASE
CITY OF WICHITA, KANSAS
 PROJECT NUMBER
 472-76-245-61330-000-000-001

2/9
 2/9

Scale
1"=20'



Unplotted

BENCHMARKS:

1. 30' west and 42' north of E 21st St. and Oliver intersection. Elev. 217.82
2. 1' out in top of curb, west side Pinecrest, 10' S. of N.L. lot 5, University Gardens 2nd Addition. Elev. = 207.03
3. N. Rim M.H. Sta. 3+15, 20'ht. Elev. = 120.15
4. N. Rim M.H. Sta. 6+30, 20'ht. Elev. = 194.50
5. 1' out in top of inlet, N. side Loaman. Elev. = 126.51

LEGEND

- W— Water Line
- SS— Sanitary Sewer
- S— Storm Sewer
- //// Removal
- C— Cablevision (Air Capital)
- E— Electric (K&E)

EARTHWORK QUANTITIES

Excavation = 3322.20 cy	Compacted Fill = 560 cy
+ 10% = 365.42	+ 10% = 61.60
Total = 3787.62 C.Y.	Total = 621.60 C.Y.
Subgrade Manipulation = 2246.05 Y.	

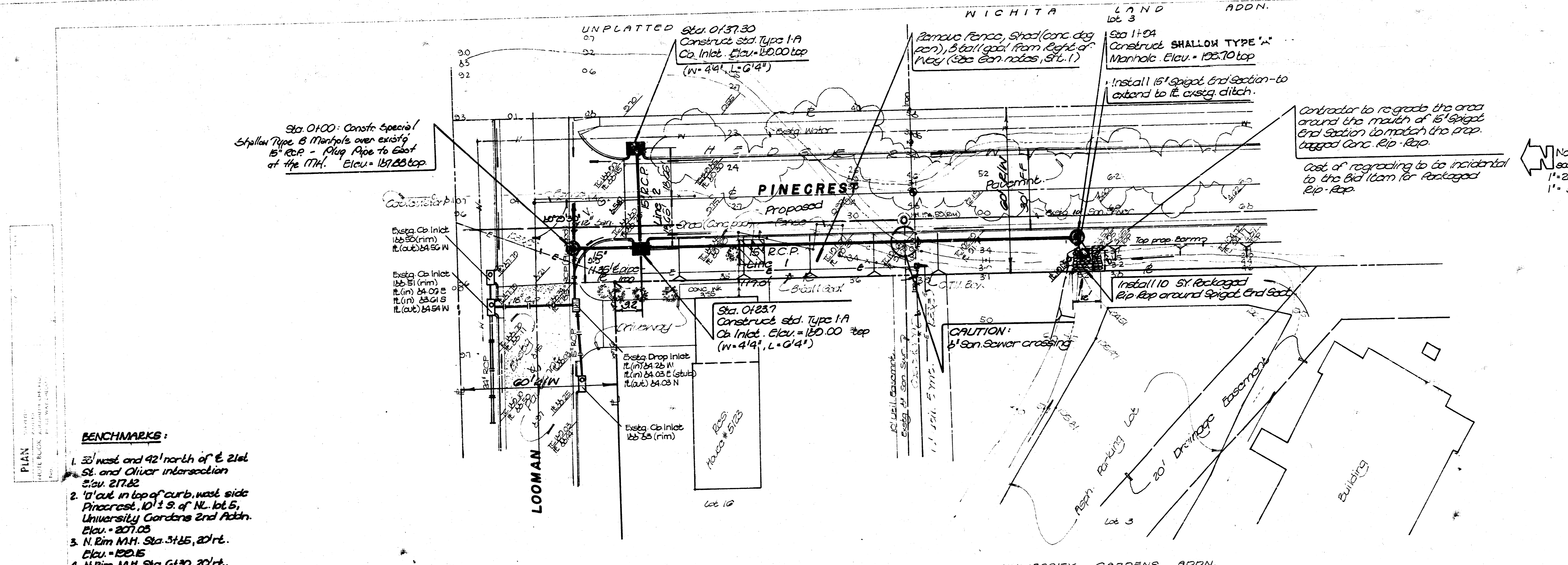
NOTE:
Finish Grading, Side Slope Preparation, and any channelization or ditch regrading necessary shall be considered as incidental to the Bid Item of C.Y. Excavation.

NOTE: BID ITEM: CLEARING RIGHT OF WAY & SITE PREPARATION INCLUDE APPROX. QUANTITIES.
 50 S.Y. PAVEMENT REMOVED
 660 L.F. LARGE HEDGE REMOVED
 155 L.F. FENCE REMOVED
 SHED AND FOUNDATION REMOVED EA.
 BASKETBALL GOAL & POST REMOVED EA.
 2 POSTS REMOVED EA.

Project No. 472 76 245 61330 000 000 001

BAUGHMAN COMPANY, P.A.
 SURVEYING & ENGINEERING
 910-200-7971 • 910-211-1111 • WICHITA, KANSAS 67211

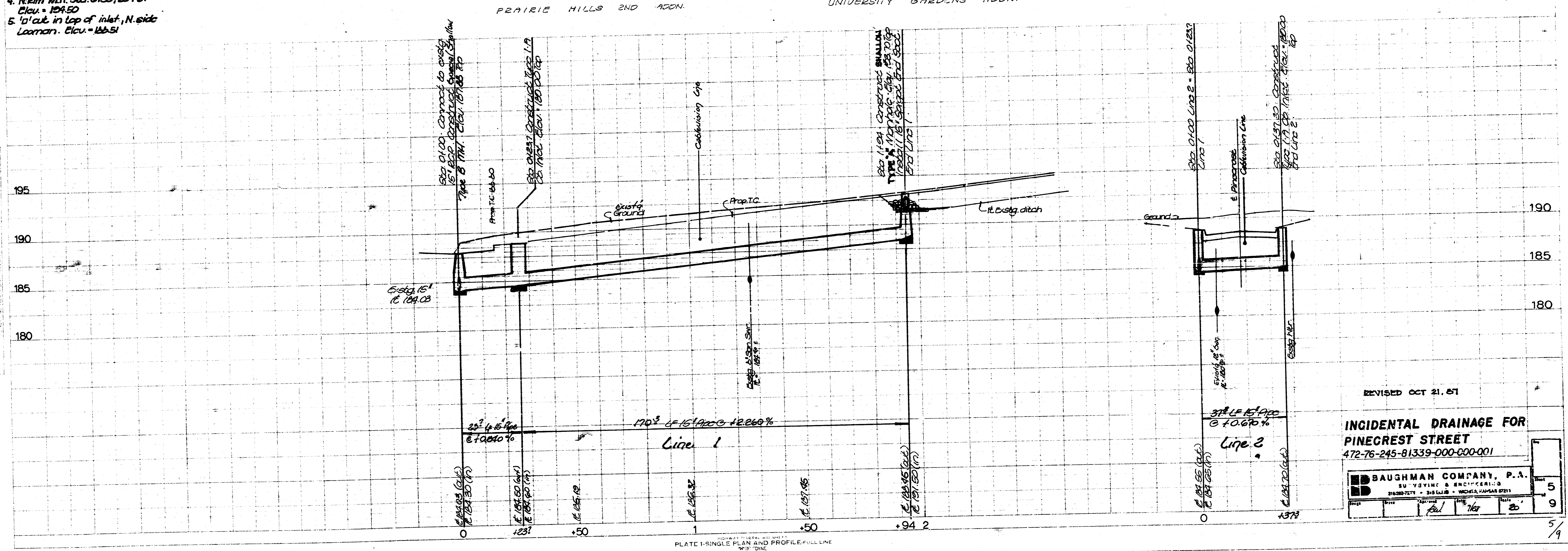
Sheet	3
of	9



- BENCHMARKS:**
- 33' west and 42' north of E 21st St. and Oliver intersection Sta. 217.62
 - 10' out in top of curb, west side Pinecrest, 10' S. of N.L. lot 5, University Gardens 2nd Addn. Elev. = 207.05
 - N. Rim M.H. Sta. 3+85, 20' rt. Elev. = 220.15
 - N. Rim M.H. Sta. 6+30, 20' rt. Elev. = 194.50
 - 10' out in top of inlet, N. side Looman. Elev. = 186.51

PROFILE

DATE: 10/21/57
 DRAWN BY: [unclear]
 CHECKED BY: [unclear]
 SCALE: 1" = 20' HORIZ.
 1" = 5' VERT.



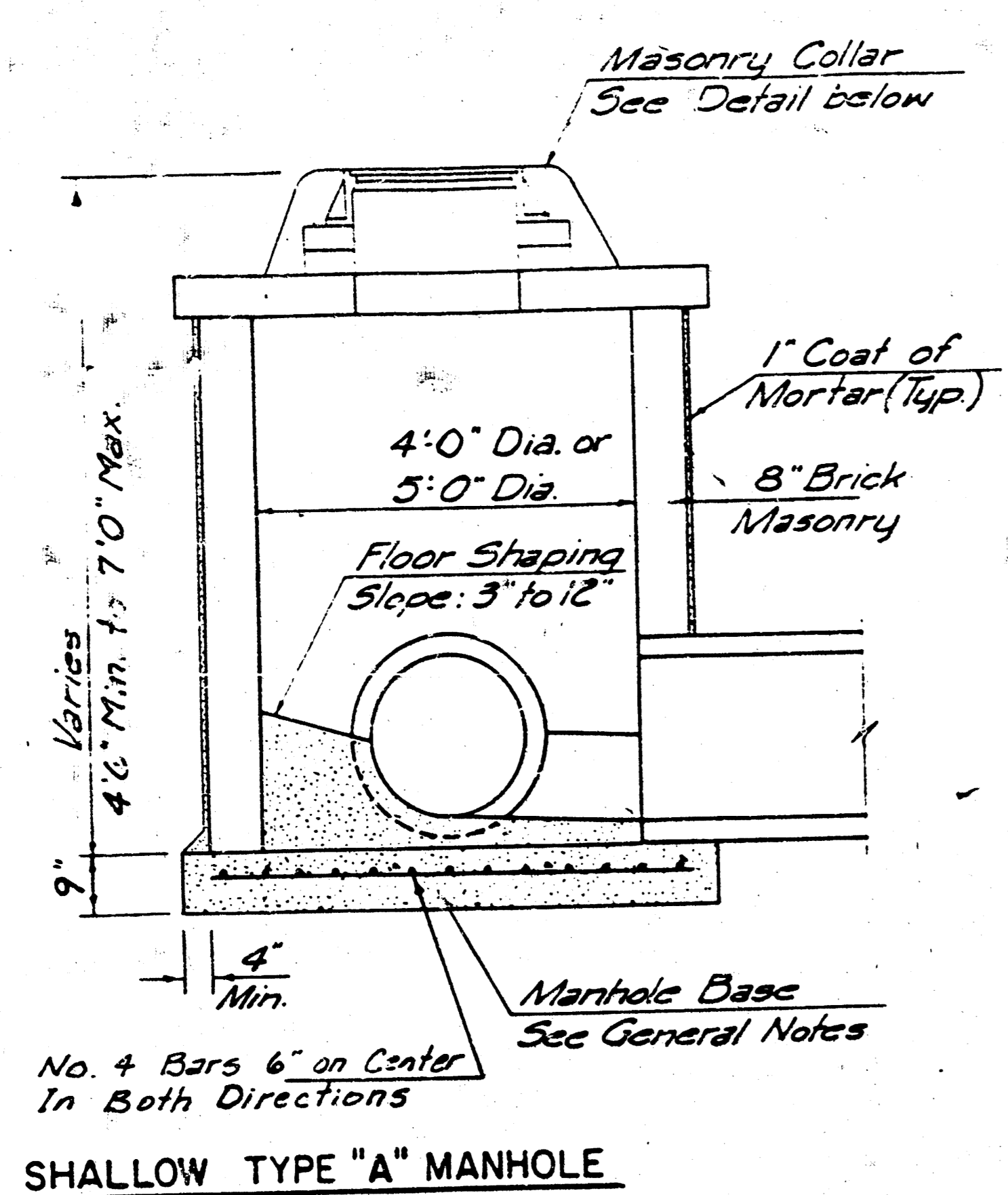
REVISED OCT 21, 57

INCIDENTAL DRAINAGE FOR PINECREST STREET
 472-76-245-81339-000-001

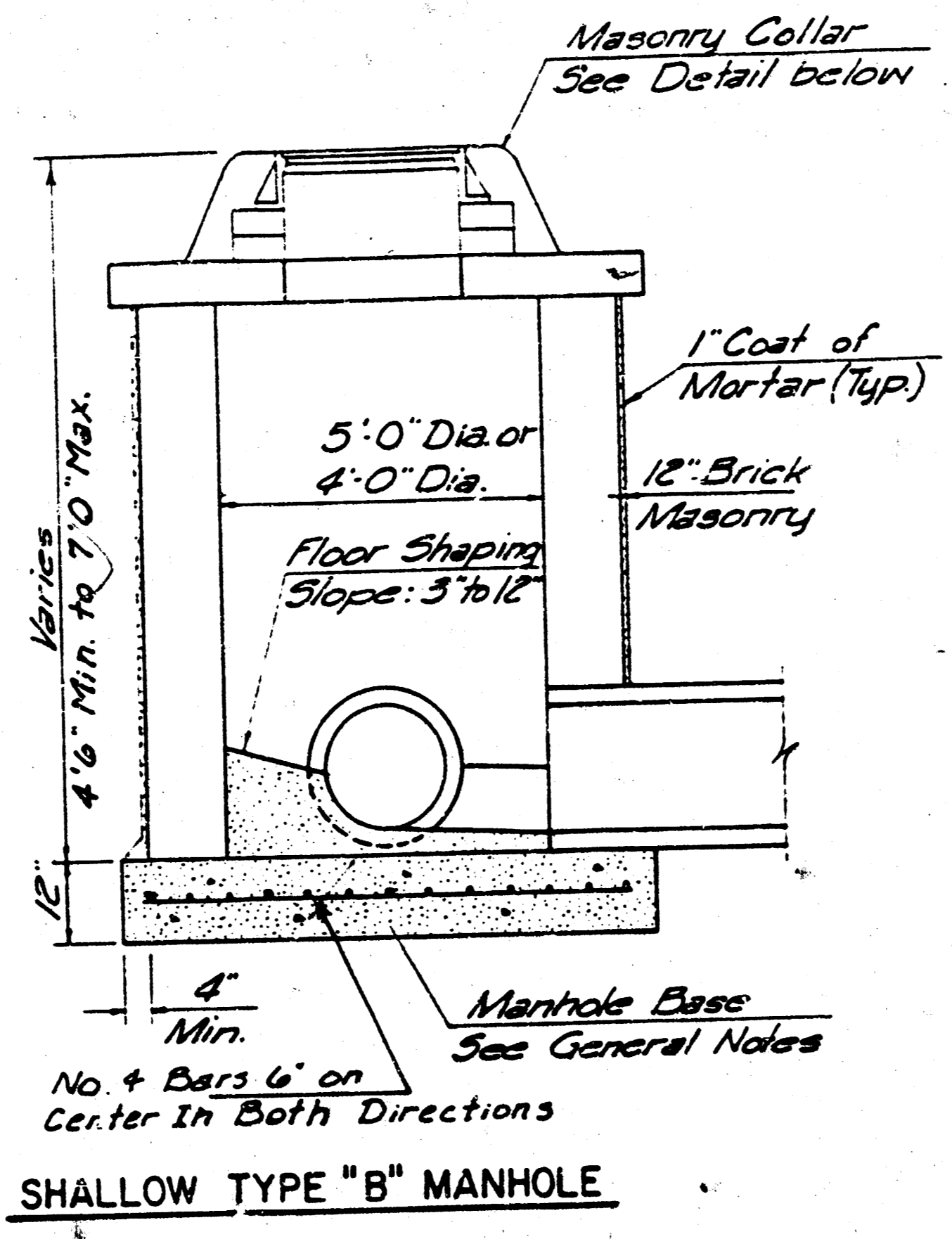
BAUGHMAN COMPANY, P.A.
 SU-YOUNG & ASSOCIATES
 1001 W. 11th St. - WICHITA, KANSAS 67211

DATE	BY	CHKD	APP'D
10/21/57	[unclear]	[unclear]	[unclear]

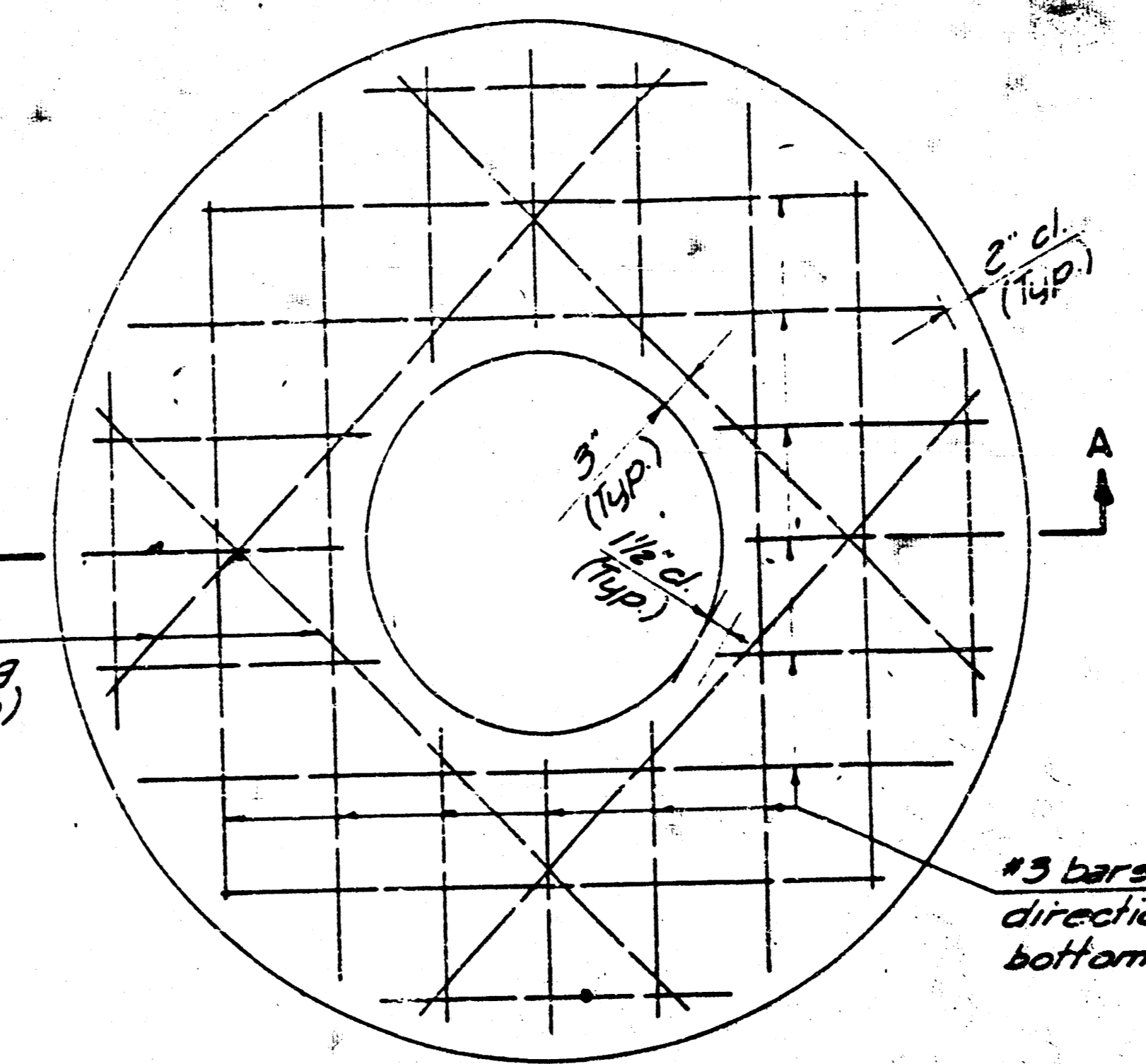
5/9



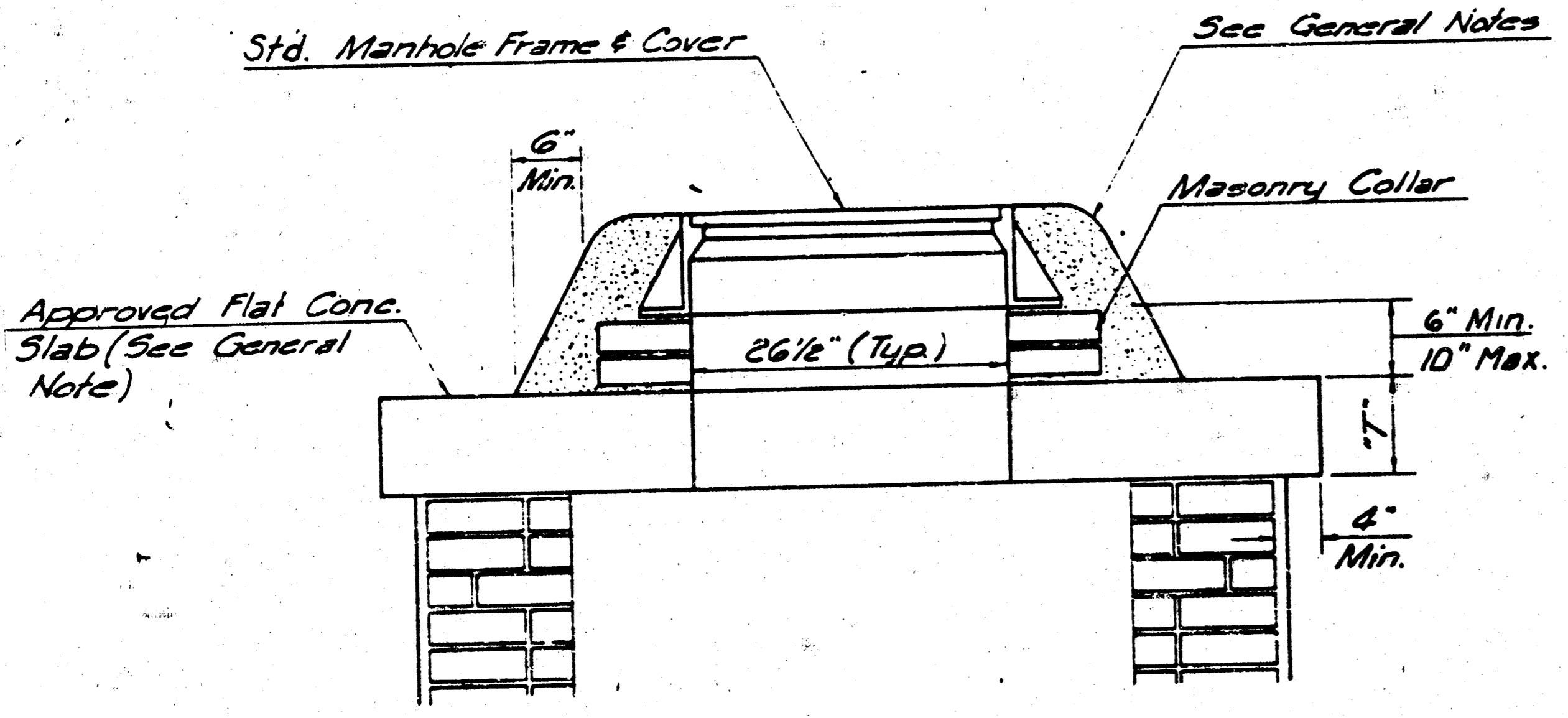
SHALLOW TYPE "A" MANHOLE



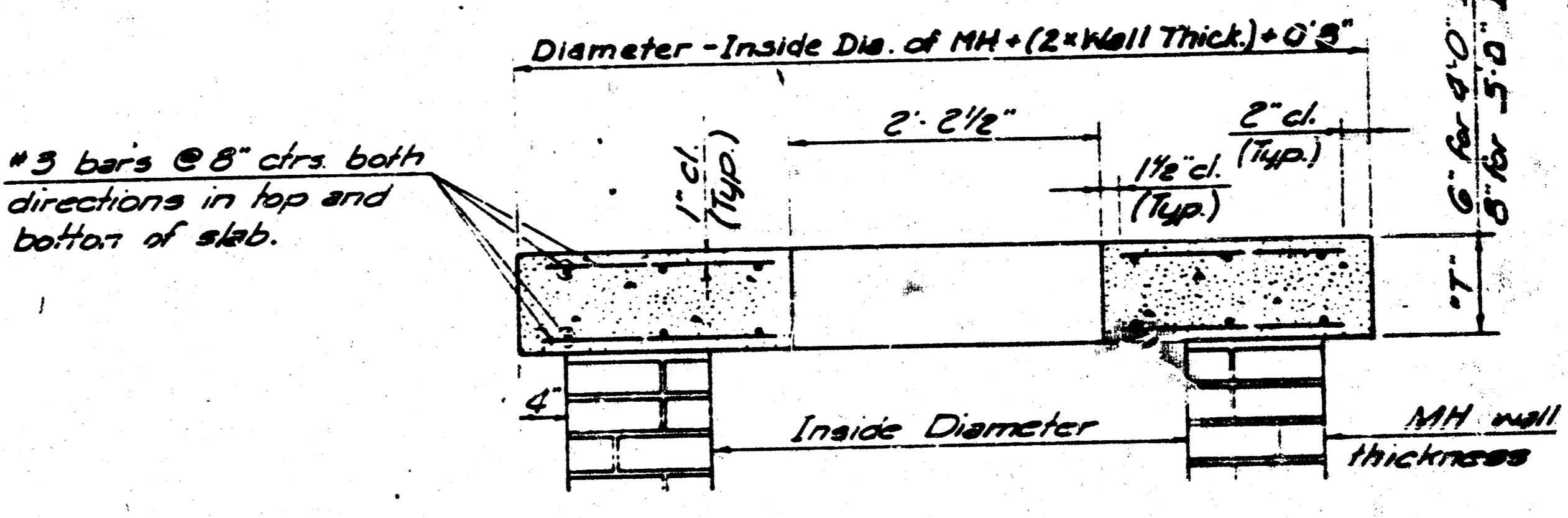
SHALLOW TYPE "B" MANHOLE



PLAN

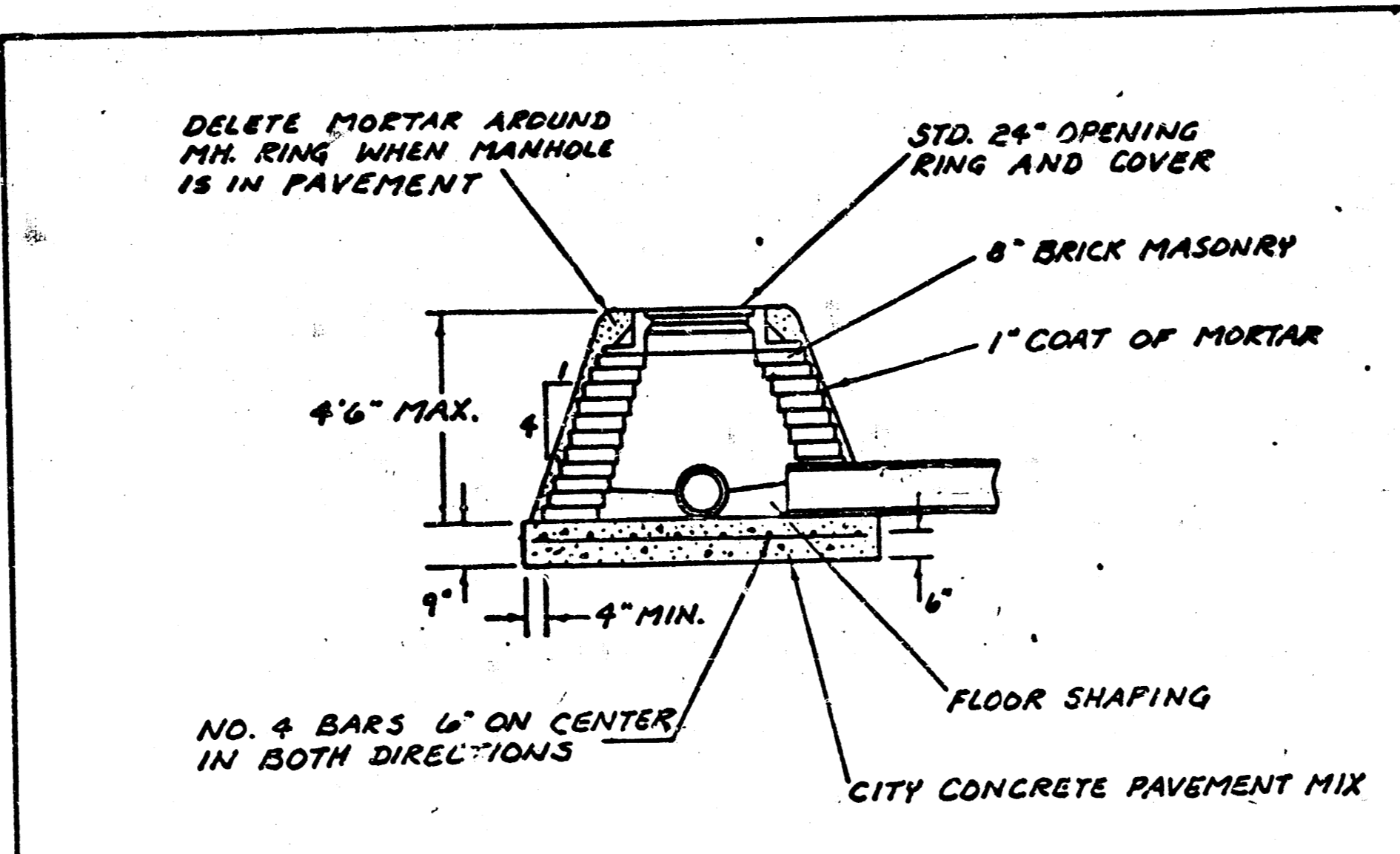


MASONRY COLLAR DETAIL

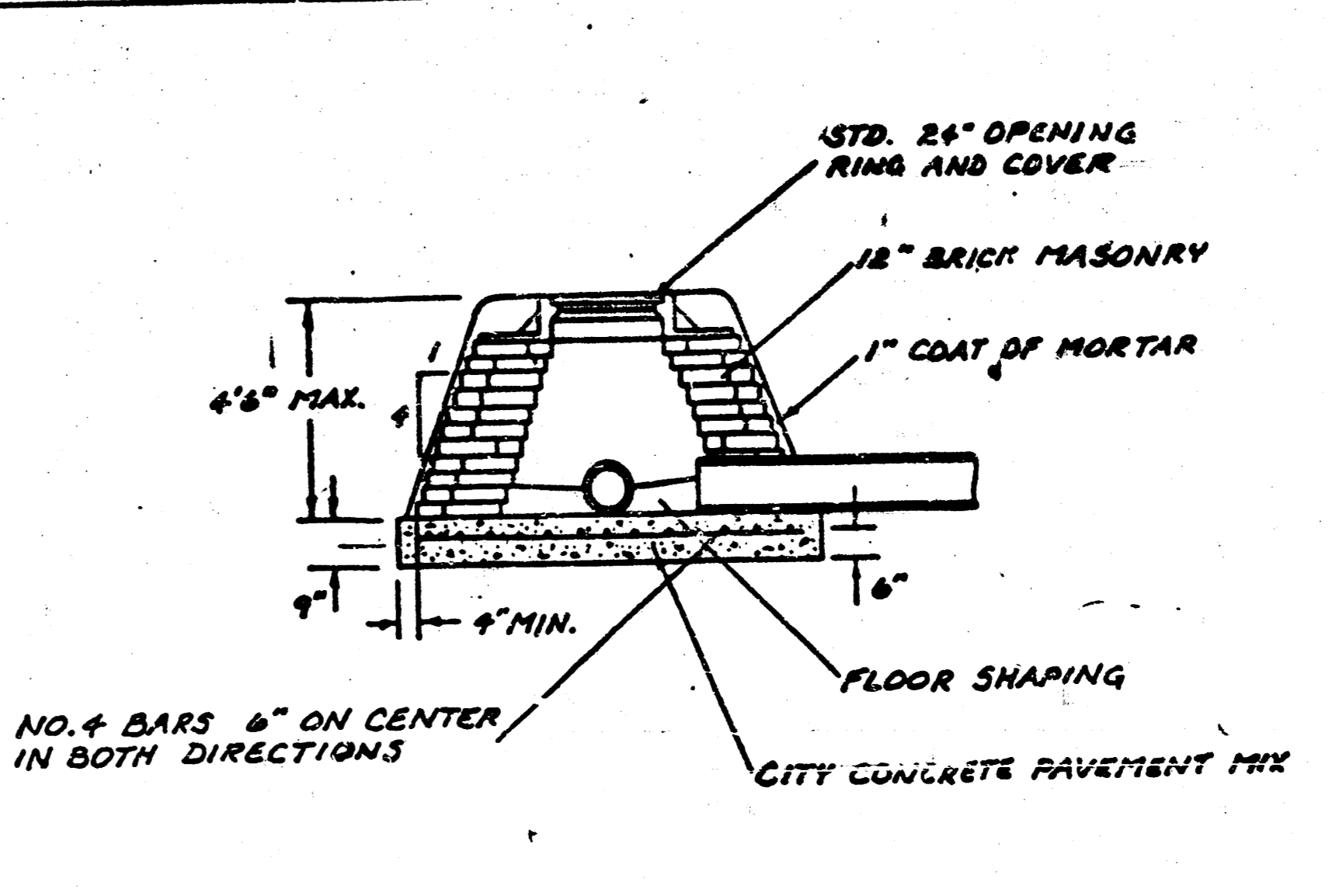


SECTION A-A

FLAT CONCRETE SLAB DETAILS



SPECIAL SHALLOW TYPE 'A' MANHOLE



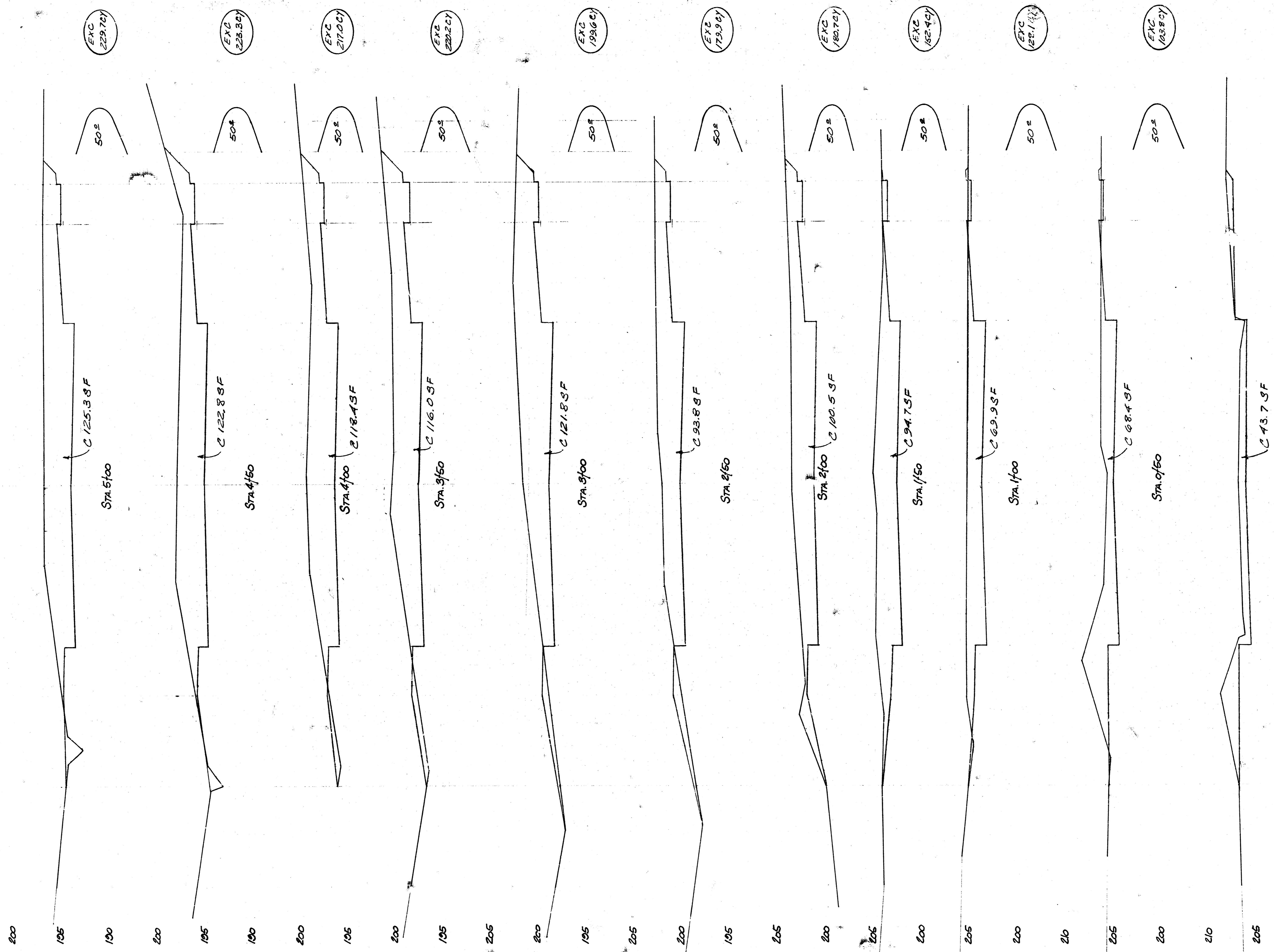
SPECIAL SHALLOW TYPE 'B' MANHOLE

- GENERAL NOTES
- MORTAR USED IN MASONRY CONSTRUCTION SHALL CONTAIN 8 SACKS OF CEMENT PER CUBIC YARD. CONCRETE USED IN MANHOLE BASES SHALL CONFORM TO THE REQUIREMENTS OF CONCRETE FOR CONCRETE PAVEMENT CONSTRUCTION AS SPECIFIED IN THE CITY STANDARD PAVING SPECIFICATIONS USING CITY LOW-CRETE CEMENT MIX WITHOUT AIR ENTRAINING ADMIXTURE. MORTAR SHALL BE PLACED AROUND THE MANHOLE RING AS SHOWN ON THE DRAWINGS WHEN MANHOLES ARE CONSTRUCTED IN UNPAVED AREAS. TYPE "A" SHALLOW MANHOLES CAN BE USED ON SEWERS WHEN THE MANHOLE IS NOT LOCATED WITHIN PUBLIC STREET PAVEMENT. MANHOLES CONSTRUCTED WHERE PIPE SIZES ARE SMALLER THAN 24" SHALL HAVE AN INSIDE DIAMETER OF 4". MANHOLES CONSTRUCTED WHERE PIPE SIZES ARE 24" OR LARGER SHALL HAVE AN INSIDE DIAMETER OF 5". COMPLETED MANHOLE SHALL BE WITHOUT LEAKS AND WATER TIGHT.
 - REINFORCING STEEL SHALL BE INSTALLED IN THE MANHOLE BASES AND SHALL CONSIST OF NO. 4 BARS PLACED ON 6" CENTERS IN BOTH DIRECTIONS. THE MANHOLE BASE REINFORCEMENT SHALL BE PLACED 6" ABOVE THE BOTTOM OF THE MANHOLE BASE. ALL COSTS FOR FURNISHING AND INSTALLING REINFORCING STEEL SHALL BE INCLUDED IN THE UNIT PRICE BID FOR THE MANHOLE.
 - THE FLOORS OF ALL MANHOLES SHALL BE SHAPED WITH FLOW CHANNELS SUCH THAT THE MANHOLES WILL BE SELF-CLEANING AND FREE OF AREAS WHERE SOLIDS COULD BE DEPOSITED AS SEWAGE FLOWS THROUGH THE MANHOLE FROM ALL INLET PIPES TO THE OUTLET PIPE. FLOW CHANNELS SHALL BE FORMED TO MATCH THE BOTTOM HALVES OF THE INFLOWING PIPES AND THE OUTFLOWING PIPE AS SHOWN BY THE DRAWINGS. MANHOLE FLOORS SHALL HAVE SLOPES OF 3 INCHES PER FOOT IN THE AREAS OUTSIDE OF THE FLOW CHANNELS SLOPED TOWARD THE FLOW CHANNELS. PIPES LAID THROUGH MANHOLES SHALL HAVE THE TOP HALF REMOVED TO HEAT LINES FOR THE FULL INSIDE DIAMETER OF THE MANHOLE. MANHOLE FLOORS SHALL THEN BE SHAPED AROUND THE BOTTOM HALF OF THE PIPE WHICH FORMS THE FLOW CHANNEL.
 - PIPES INSTALLED WITHIN THE EXCAVATION MADE FOR THE MANHOLE SHALL BE CRADLED WITH CONCRETE TO THE LIMITS OF THE MANHOLE EXCAVATION. WHEN CLAY PIPE IS USED, THE CRADLE SHALL EXTEND TO THE FIRST JOINT OUTSIDE THE MANHOLE. THE CRADLE SHALL BE TERMINATED AT THE CLAY PIPE JOINT IN A MANNER WHICH WILL MAINTAIN THE FLEXIBILITY OF THE JOINT. COST OF CRADLE WITHIN MANHOLE EXCAVATION OR TO CLAY PIPE JOINTS ADJACENT TO MANHOLE SHALL BE INCLUDED IN THE UNIT PRICE BID FOR THE MANHOLE.
 - MANHOLE COVER CASTINGS AND MANHOLE FRAME CASTINGS SHALL CONFORM TO THE REQUIREMENTS AS INDICATED IN THE STANDARD SPECIFICATIONS AND AS SHOWN IN THE STANDARD DETAIL DRAWINGS.
 - THE CROUNTS OF INFLOWING PIPES SHALL NEVER BE SET LOWER THAN THE CROWN OF THE OUTFLOWING PIPE.
 - STANDARD SHALLOW MANHOLES TYPE "A" AND "B" SHALL BE PAID FOR AT THE UNIT PRICE BID PER EACH FOR THE TYPE AND DIAMETER INDICATED. STANDARD SPECIAL SHALLOW MANHOLES TYPE "A" AND "B" SHALL BE PAID FOR AT THE UNIT PRICE BID PER EACH FOR THE TYPE INDICATED. ALL STANDARD SHALLOW MANHOLE DIAMETERS WILL BE 4" UNLESS INDICATED OTHERWISE.

CITY OF WICHITA, KANSAS
STANDARD SHALLOW MANHOLES
TYPE 'A' AND TYPE 'B'

972 76 246 81335 000 000 001
Designed by _____
Checked by _____
Date _____
Job No. _____

FILMED FROM THE BEST
AVAILABLE COPY....

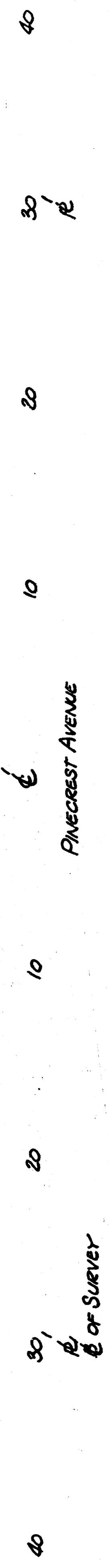


Sta. 0+00

Sheet Total
Exc = 1834.7 CY

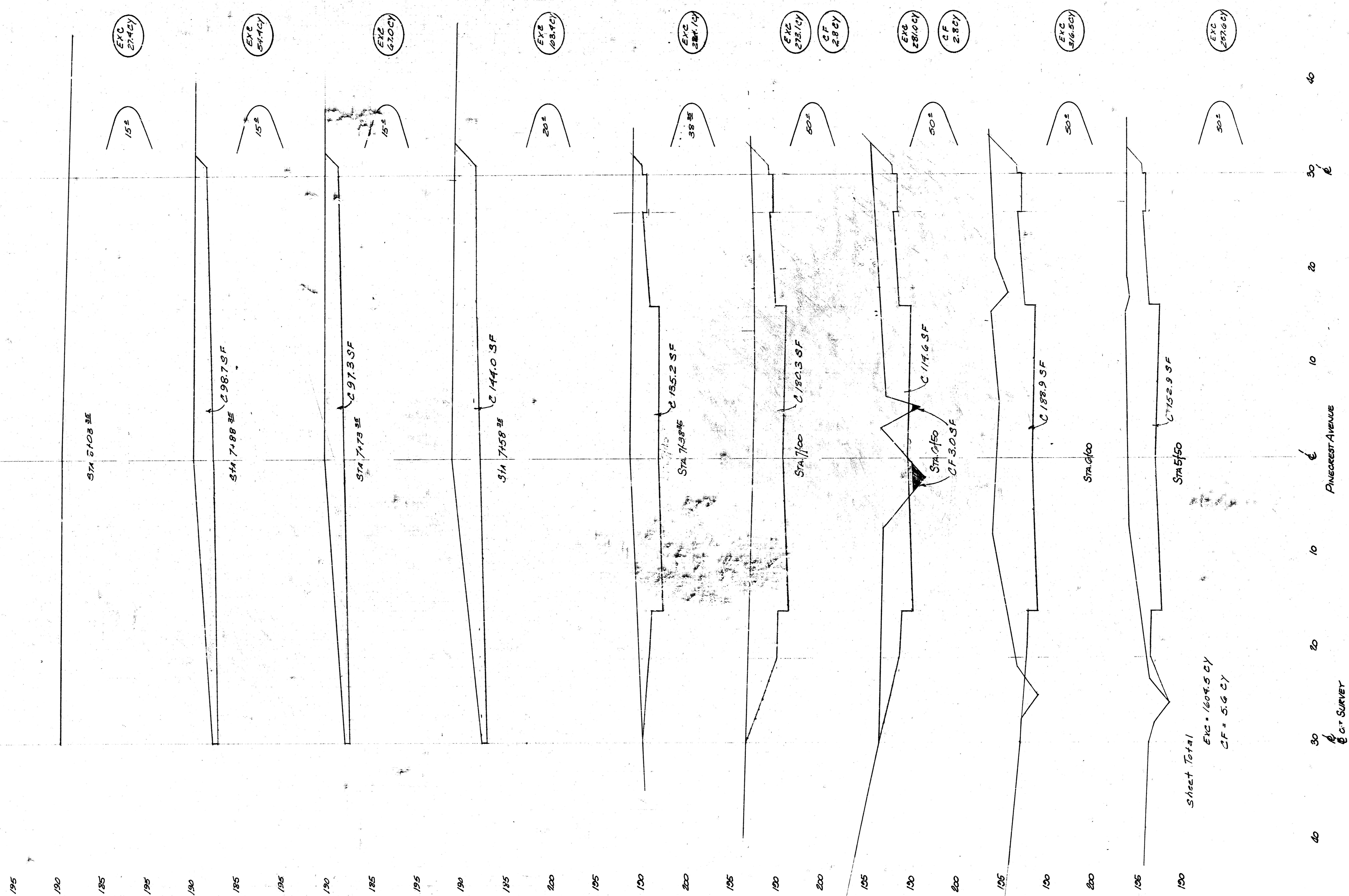
Project Total
Exc = 3439.2 CY
Cut = 516 CY

Sta.



Project # 472-76-245-81335-000-000-001
Earthwork Sections
Pinecrest Avenue
8/9

FILMED FROM THE BEST AVAILABLE COPY.....



Sheet Total
 EXC = 1604.5 CY
 CF = 5.6 CY

Earthwork Sections
 Pinecrest Avenue
 1000000 215 216 217 218 219 220 221 222 223 224 225 226 227 228 229 230 231 232 233 234 235 236 237 238 239 240 241 242 243 244 245 246 247 248 249 250 251 252 253 254 255 256 257 258 259 260 261 262 263 264 265 266 267 268 269 270 271 272 273 274 275 276 277 278 279 280 281 282 283 284 285 286 287 288 289 290 291 292 293 294 295 296 297 298 299 300

FILMED FROM THE BEST
 AVAILABLE COPY