

ROCK ROAD PAVEMENT WIDENING  
TO SERVE  
LOTS 1, 2, 3, 4 AND 5  
BLOCK 1

COMCTARA POWER CENTER

ROCK ROAD  
INDEX NO. 607879  
USER CODE 072 PPP  
CITY OF WICHITA, KANSAS  
MICHAEL E. LINDEBAK, CITY ENGINEER

GENERAL NOTES

UNDERGROUND UTILITY SERVICE LINES AND OVERHEAD UTILITY POLE LINES ARE TO BE ADJUSTED AS NECESSARY BY OTHERS PRIOR TO CONSTRUCTION UNLESS THE PLANS SPECIFICALLY CALL FOR THEIR ADJUSTMENT BY THE CONTRACTOR. EXISTING UTILITIES AND THEIR LOCATION, AS SHOWN ON THE PLANS, REPRESENT THE BEST INFORMATION OBTAINABLE FOR DESIGN. LOCATION INFORMATION HAS BEEN OBTAINED FROM THE VARIOUS UTILITY COMPANIES AND IS EITHER FROM COMPANY RECORDS, DRAWINGS OR COMPANY PROVIDED FIELD LOCATIONS. THE CONTRACTOR WILL BE REQUIRED TO WORK AROUND EXISTING UTILITIES WITHIN THE RIGHT-OF-WAY WHICH DO NOT CONFLICT WITH PROPOSED CONSTRUCTION.

RUBBLE FROM THE REMOVAL OF MISCELLANEOUS STRUCTURES AND EXCESS EXCAVATION WHICH IS TO BE WASTED SHALL BE DISPOSED OF ON SITES TO BE PROVIDED BY THE CONTRACTOR AND APPROVED AS NOTED BELOW.

ALL DISPOSAL SITES MUST BE APPROVED BY THE KANSAS DEPARTMENT OF HEALTH AND ENVIRONMENT. MATERIAL EITHER STOCKPILED OR DISPOSED OF IN A FLOOD PLAIN WOULD REQUIRE A KANSAS STATE BOARD OF AGRICULTURE PERMIT. ANY MATERIAL DUMPED IN WATERS OF THE UNITED STATES OR WETLANDS IS SUBJECT TO U.S. CORPS OF ENGINEERS PERMITTING REGULATIONS. ANY MATERIAL BURIED OR STOCKPILED BEYOND APPROVED CONSTRUCTION LIMITS WOULD REQUIRE ADDITIONAL ARCHEOLOGICAL INVESTIGATIONS UNLESS BURIED IN A PREVIOUSLY APPROVED BORROW LOCATION.

CONTRACTOR SHALL SATISFY HIMSELF OF SUBSURFACE CONDITIONS PRIOR TO CONSTRUCTION.

CONTRACTOR SHALL PROVIDE A MINIMUM FORTY-EIGHT (48) HOUR ADVANCE NOTICE (EXCLUDING WEEKENDS AND HOLIDAYS) PRIOR TO BEGINNING ANY EXCAVATION, TO KANSAS ONE-CALL SYSTEM, A UTILITY LOCATION SERVICE, AT (316) 687-2470 TO REQUEST THE FOLLOWING UTILITY COMPANIES TO LOCATE ALL EXISTING LINES WITHIN THE PROJECT AREA: KPL/GAS SERVICE, K.G.B.E., SOUTHWESTERN BELL TELEPHONE, MULTIMEDIA CABLEVISION, CITY OF WICHITA SEWER MAINTENANCE AND CITY OF WICHITA WATER DEPARTMENT.

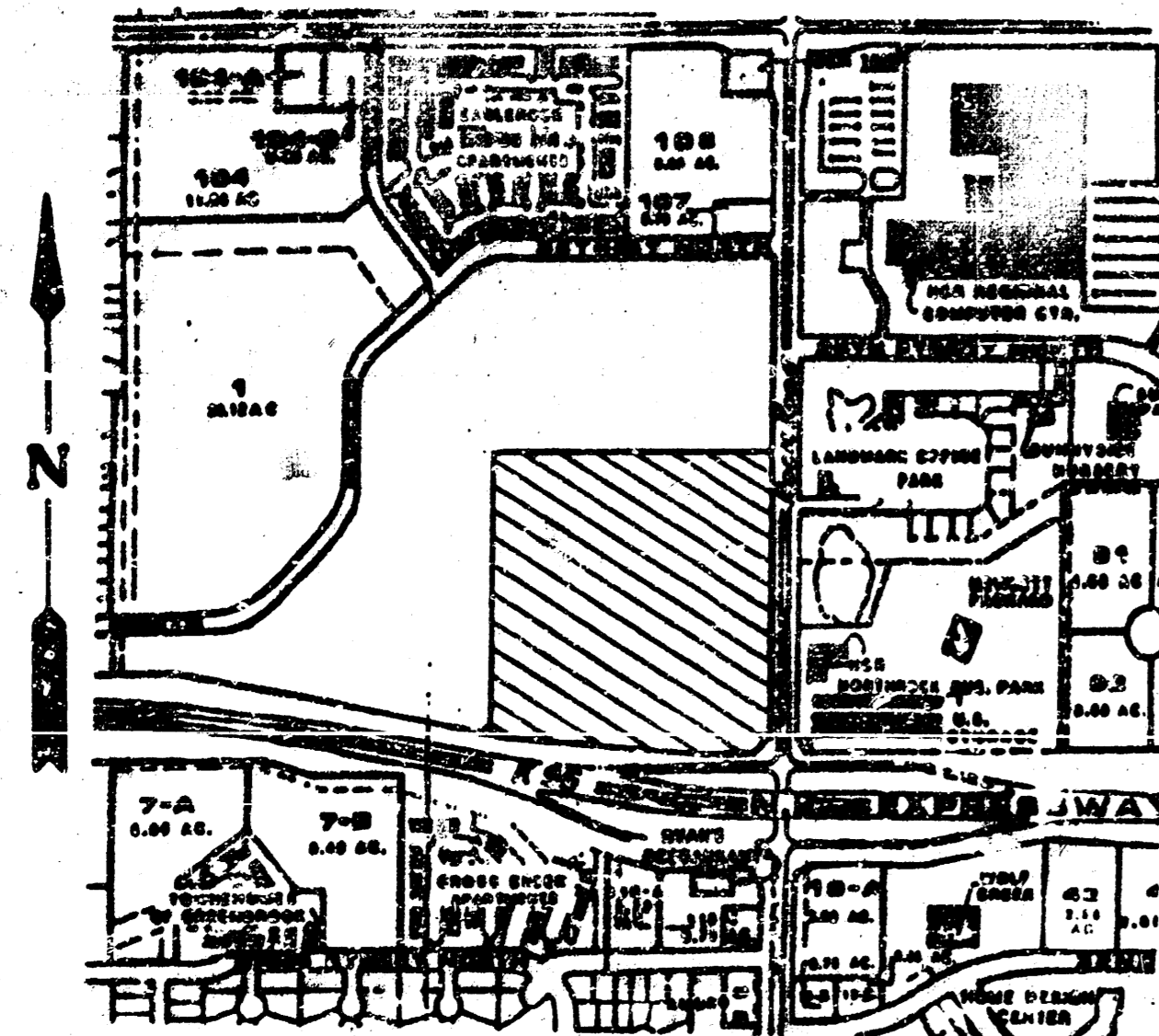
THE CONTRACTOR SHALL BE RESPONSIBLE FOR PRESERVING PROPERTY IRONS. THE CONTRACTOR WILL BE REQUIRED TO RE-ESTABLISH ANY PROPERTY IRONS WHICH ARE DAMAGED OR DESTROYED BY HIS CONSTRUCTION OPERATIONS. SUCH IRONS SHALL BE RE-ESTABLISHED BY A LICENSED LAND SURVEYOR IN ACCORDANCE WITH STATE LAWS.

THE WATER DEPARTMENT SHALL FIELD LOCATE WATER VALVES ONE TIME DURING CONSTRUCTION WHEN REQUESTED BY THE CONTRACTOR. IT SHALL BE THE CONTRACTOR'S RESPONSIBILITY TO PRESERVE SUCH FIELD LOCATIONS DURING THE CONSTRUCTION PROCESS. WATER VALVES, WATER VALVE BOXES OR FIRE HYDRANTS DAMAGED DURING CONSTRUCTION SHALL BE REPAIRED BY THE CONTRACTOR AT HIS OWN EXPENSE.

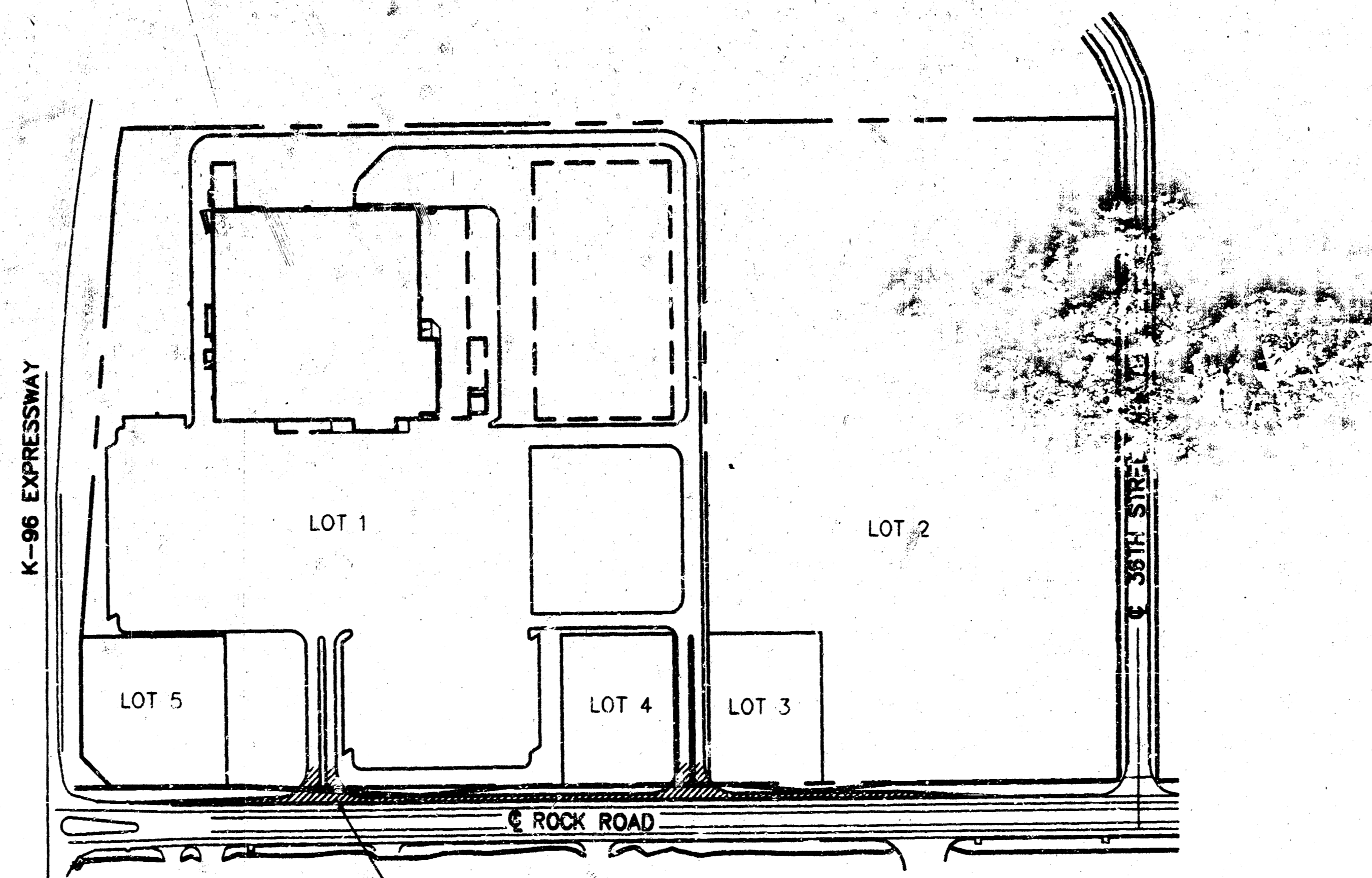
THIS PROJECT DOES NOT INCLUDE ANY PROVISIONS FOR CONSTRUCTION OF DRIVEWAYS.

LANDSCAPING AND UNDERGROUND SPRINKLER SYSTEMS ARE PRESENT WITHIN THE PROJECT LIMITS. THE CONTRACTOR SHALL REMOVE THESE ITEMS AS NECESSARY FOR CONSTRUCTION, THEN RESTORE THEM TO PRE-CONSTRUCTION CONDITION AS APPROVED BY THE ENGINEER AND THE OWNER AND/OR THEIR AGENT. OTHER DISTURBED AREAS WITHIN THE PROJECT LIMITS SHALL BE SEEDED, FERTILIZED, AND MULCHED IN ACCORDANCE WITH CITY OF WICHITA STANDARD SPECIFICATIONS. ALL COSTS ASSOCIATED WITH REMOVAL AND REPLACEMENT OF LANDSCAPING AND SPRINKLERS; AND SEEDING, FERTILIZING AND MULCHING SHALL BE INCLUDED IN THE BASE BID.

TRAFFIC IS TO BE MAINTAINED THROUGH CONSTRUCTION OF THIS PROJECT. TRAFFIC CONTROL SHALL BE THE RESPONSIBILITY OF THE CONTRACTOR. ALL BARRICADES, SIGNS, LIGHTS, AND OTHER PROTECTIVE DEVICES SHALL BE INSTALLED AND MAINTAINED IN CONFORMITY WITH THE LATEST EDITION OF THE CITY OF WICHITA BARRICADE MANUAL. SEE SPECIFICATIONS FOR ADDITIONAL INFORMATION.



VICINITY MAP  
NO SCALE

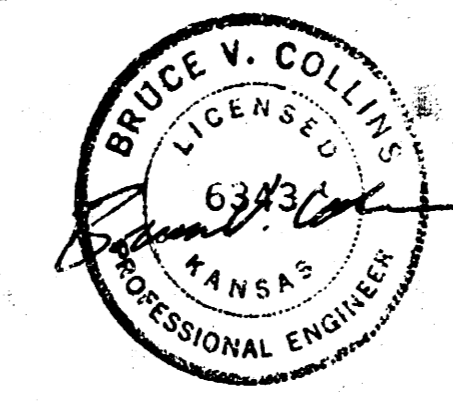


PROJECT LOCATION  
NO SCALE

NOTE:

CONTACT PERSONS

BRUCE V. COLLINS, P.E., KAW VALLEY ENGINEERING, INC. 913-762-5040  
LAURA BEVILACQUA, CONST. MANAGER 501-273-4287  
WAL-MART STORES, INC.



APPROVED AS NOTED  
BY CITY ENGINEER OF WICHITA

SANITARY SEWERS \_\_\_\_\_  
STORM SEWERS \_\_\_\_\_  
WATER MAINS \_\_\_\_\_  
PAVING VRH 9/8/92

NOTE TO CONTRACTOR

INSPECTION AND TESTING FOR THIS PROJECT IS TO BE PROVIDED BY A LICENSED CONSULTING ENGINEERING FIRM UNDER CONTRACT WITH THE OWNER/DEVELOPER. SAID INSPECTION TO BE IN ACCORDANCE WITH THE CITY OF WICHITA STANDARD CONSTRUCTION ENGINEERING PRACTICES AND CERTIFIED BY A LICENSED PROFESSIONAL ENGINEER. NO WORK SHALL BE PERFORMED IN DEDICATED EASEMENTS OR THE PUBLIC RIGHT-OF-WAY BY THE CONTRACTOR WITHOUT SUCH INSPECTION NOR SHALL ANY WORK BE COMMENCED IN DEDICATED EASEMENTS OR PUBLIC RIGHT-OF-WAY WITHOUT WRITTEN AUTHORIZATION BY THE CITY ENGINEER.

INDEX TO SHEETS:

- TITLE SHEET
- PAVEMENT WIDENING DETAILS AND PROFILE
- PAVEMENT WIDENING DETAILS AND PROFILE
- PAVEMENT WIDENING DETAILS AND PROFILE
- CITY OF WICHITA STANDARD DETAILS
- PAVEMENT DETAILS

BENCHMARKS:

BENCHMARK #1: Brass disc City of Wichita #1. City Elevation = 138.30  
Rock Rd Sta 33+46.18, 56.84 Rt. Elevation = 1385.70, MSL

BENCHMARK #2: Brass disc City of Wichita #2. City Elevation = 200.18  
Rock Rd Sta 26+35.82, 47.91 Lt. Elevation = 1387.58, MSL

BENCHMARK #3: Railroad spike in 5th power pole East of Rock Road along Interstate 96, 1/2 mile North of 29th Street. Benchmark #65 per Kansas Highway Plans 96. Elevation = 1407.37, MSL

LEGEND:

- ⊙ Sanitary Manhole
- ☆ Light Pole
- Sign
- W — 8" Water Line
- G — Gas Lines
- FOC — Fiber Optic Cable
- SS — 8" Sanitary Sewer Line
- OP — Overhead Power Lines
- E — Buried Electric Cable

- ▨ Heavy Duty Concrete Paving
- ▨ All F 6" Asphaltic Concrete Pavement on
- ▨ Reinforced Crushed Rock Base
- ▨ All II 6" Asphaltic Concrete Pavement on 6" Treated Subgrade
- Existing Curb & Gutter

NO.	DATE	REVISION PER CITY REQUEST	BY
2	9/4/92	REVISED PER CITY REQUEST	DBS
1	8/28/92	REVISED PER CITY REQUEST	DBS

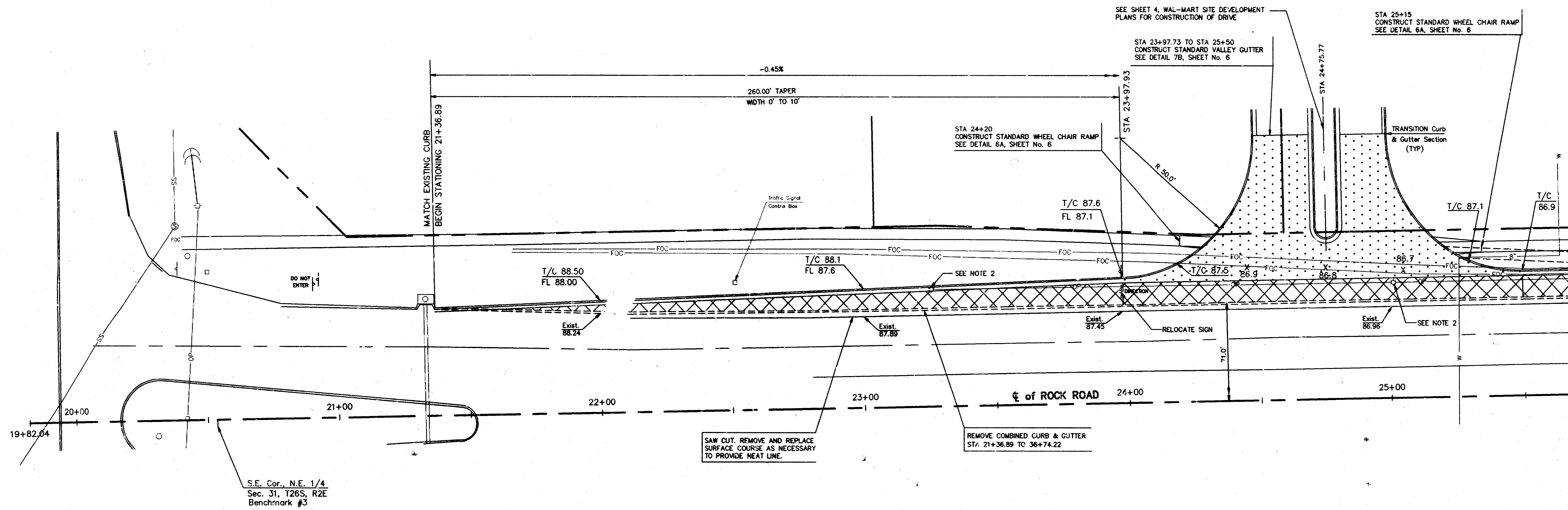
TITLE SHEET

P.O. BOX 1304  
2319 NORTH JACKSON  
JUNCTION CITY, KANSAS 66441  
(913)762-5040  
FAX 913-762-7744

**KAW VALLEY ENGINEERING**

122 N.W. PARKWAY  
RIVERSIDE, MISSOURI 64110  
(816)587-5033  
FAX 816-587-0129  
CEN 1399TLP

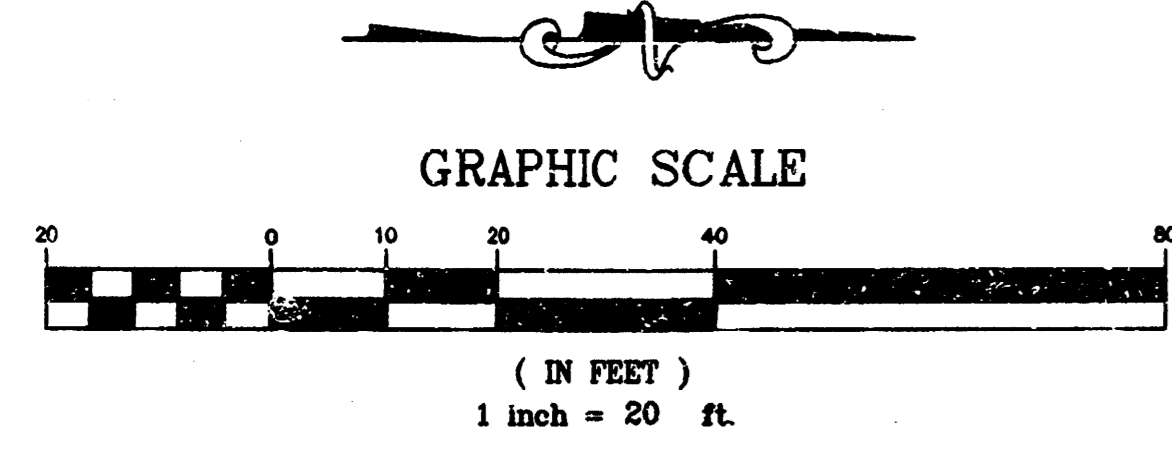
PROJ. NO. 92-1399  
DATE AUG 17, 1992  
DESIGNER BVC  
DRAWN BY BH  
CHECKED BY LEO  
SHEET 1 OF 8



S.E. Cor., N.E. 1/4  
Sec. 31, T26S, R2E  
Benchmark #3

SAW CUT, REMOVE AND REPLACE  
SURFACE COURSE AS NECESSARY  
TO PROVIDE NEAT LINE.

REMOVE COMBINED CURB & GUTTER  
STA: 21+36.89 TO 36+74.22



- LEGEND**
- HEAVY DUTY CONCRETE PAVING
  - ALT I: 6" ASPHALTIC CONCRETE PAVEMENT ON 8" REINFORCED CRUSHED ROCK BASE
  - ALT II: 10" ASPHALTIC CONCRETE PAVEMENT ON 6" TREATED SUBGRADE
  - EXISTING CURB & GUTTER

- NOTES:**
- WIDEN EXISTING STREET 10'-0" LEFT WITH HEAVY DUTY ASPHALT. SEE SHEET 6 FOR HEAVY DUTY ASPHALT DETAIL. CONSTRUCT CONCRETE CURB AND GUTTER AS SHOWN.
  - CONTRACTOR SHALL CONTACT APPROPRIATE UTILITY COMPANY FOR RELOCATION OF POWER POLES AND LIGHT POLES ALONG ROCK ROAD.
  - ALL CONSTRUCTION WORK ON CITY STREET RIGHT-OF-WAY SHALL BE IN CONFORMANCE WITH CITY OF WICHITA STANDARD DETAILS AND SPECIFICATIONS. SEE SHEETS 5 AND 6 FOR DETAILS.

**BENCHMARK #1:** Brass disc City of Wichita #1. City Elevation = 198.30  
 Rock Road Sta 33+46.18, 58.85' Rt Elevation = 1385.70

**BENCHMARK #2:** Brass disc City of Wichita #2. City Elevation = 200.18  
 Rock Road Sta 26+35.82, 47.91' Lt Elevation = 1387.58

**BENCHMARK #3:** Railroad spike in 5th power pole East of Rock Road along Interstate 96, 1/2 mile North of 29th Street. Benchmark #65 per Kansas Highway Plans 96. Elevation = 1401.37

PRIVATE PROJECT No. 072PPP(607879)

2	9/8/92	REVISED PER CITY REQUEST	DBA
1	8/28/92	REVISED PER CITY REQUEST	JO
NO.	DATE	REVISION	BY

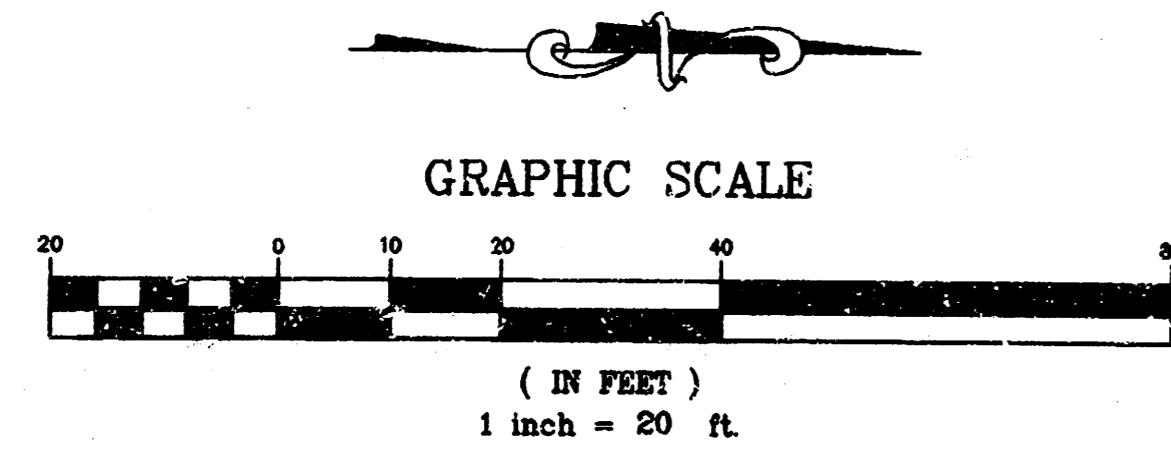
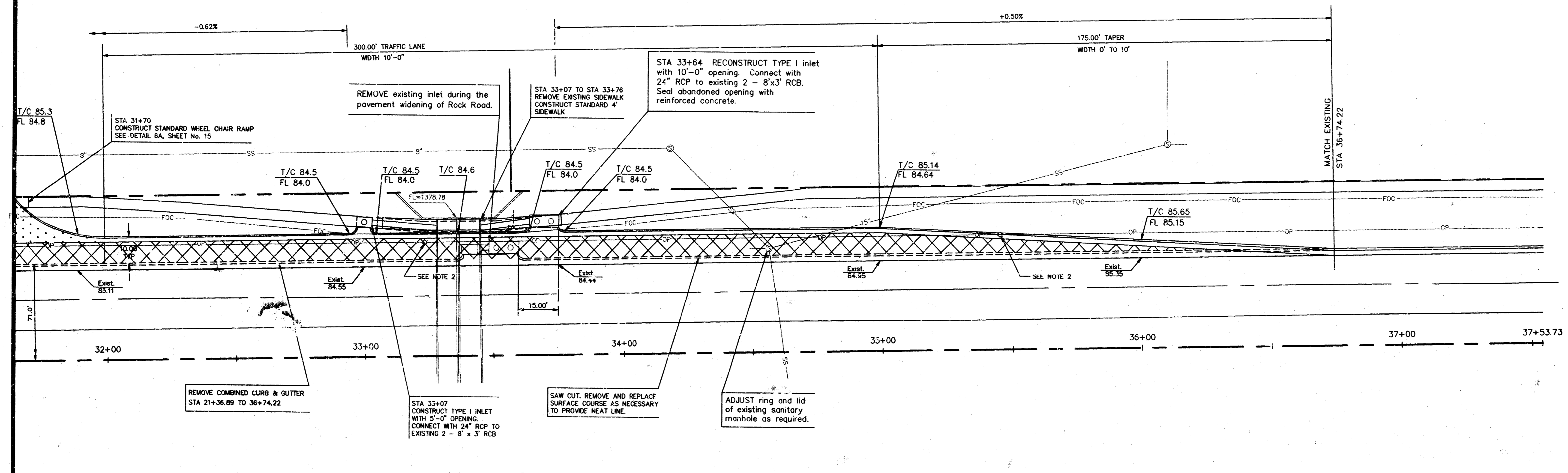
**PAVEMENT WIDENING DETAILS - WICHITA, KS #91055**

P.O. BOX 1304 2318 NORTH JACKSON JUNCTION CITY, KANSAS (913)762-5040 FAX 913-762-7744	<b>KAW VALLEY ENGINEERING</b>	122 N.W. PARKWAY RIVERDale, MISSOURI DESIGNER: EVC DRAWN BY: BHI CHECKED BY: CFN ROADCW
---	-----------------------------------	--

PROJ. NO. 92-1398  
DATE: AUG 17, 1992  
SHEET 2 OF 6



MATCH LINE SHEET 3



- LEGEND**
- HEAVY DUTY CONCRETE PAVING
  - ALT I: 6" ASPHALTIC CONCRETE PAVEMENT ON 8" REINFORCED CRUSHED ROCK BASE
  - ALT II: 10" ASPHALTIC CONCRETE PAVEMENT ON 6" TREATED SUBGRADE
  - EXISTING CURB & GUTTER

- NOTES:**
- WIDEN EXISTING STREET 10'-0" LEFT WITH HEAVY DUTY ASPHALT. SEE SHEET 6 FOR HEAVY DUTY ASPHALT DETAIL. CONSTRUCT CONCRETE CURB AND GUTTER AS SHOWN.
  - CONTRACTOR SHALL CONTACT APPROPRIATE UTILITY COMPANY FOR RELOCATION OF POWER POLES AND LIGHT POLES ALONG ROCK ROAD.
  - ALL CONSTRUCTION WORK ON CITY STREET RIGHT-OF-WAY SHALL BE IN CONFORMANCE WITH CITY OF WICHITA STANDARD DETAILS AND SPECIFICATIONS. SEE SHEETS 5 AND 6 FOR DETAILS.

- BENCHMARK #1:** Brass disc City of Wichita #1. City Elevation = 198.30  
 Rock Road Sta 33+46.18, 58.85' Rt. Elevation = 1385.70
- BENCHMARK #2:** Brass disc City of Wichita #2. City Elevation = 200.18  
 Rock Road Sta 26+35.82, 47.91' Lt. Elevation = 1387.58
- BENCHMARK #3:** Railroad spike in 5th power pole East of Rock Road along Interstate 95, 1/2 mile North of 29th Street. Benchmark #65 per Kansas Highway Plans 95. Elevation = 1401.37

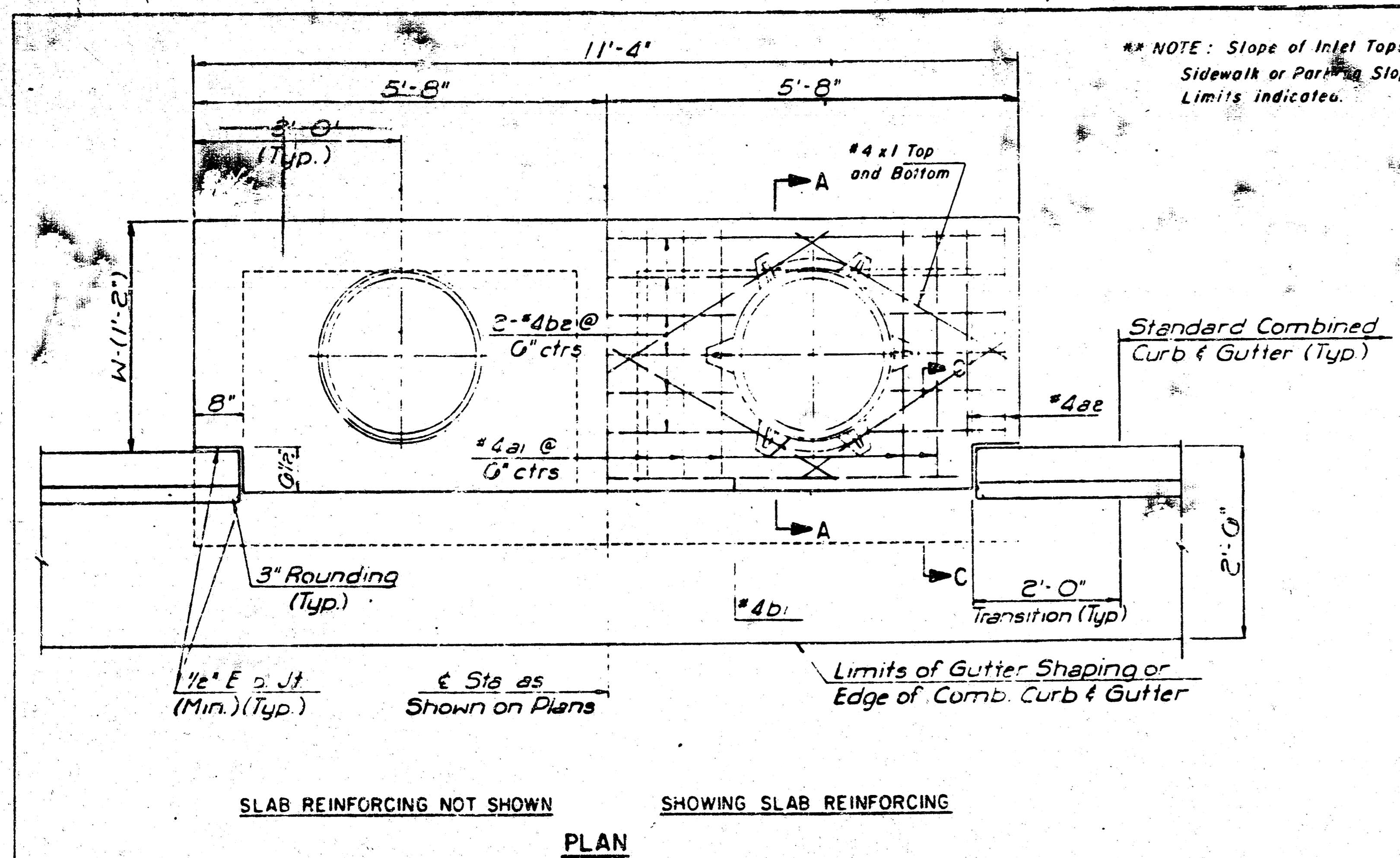
PRIVATE PROJECT No. 072PPP(607879)

NO.	DATE	REVISION	BY
2	9/8/92	REVISED PER CITY REQUEST	DBA
1	8/28/92	REVISED PER CITY REQUEST	JO
1		REVISION	

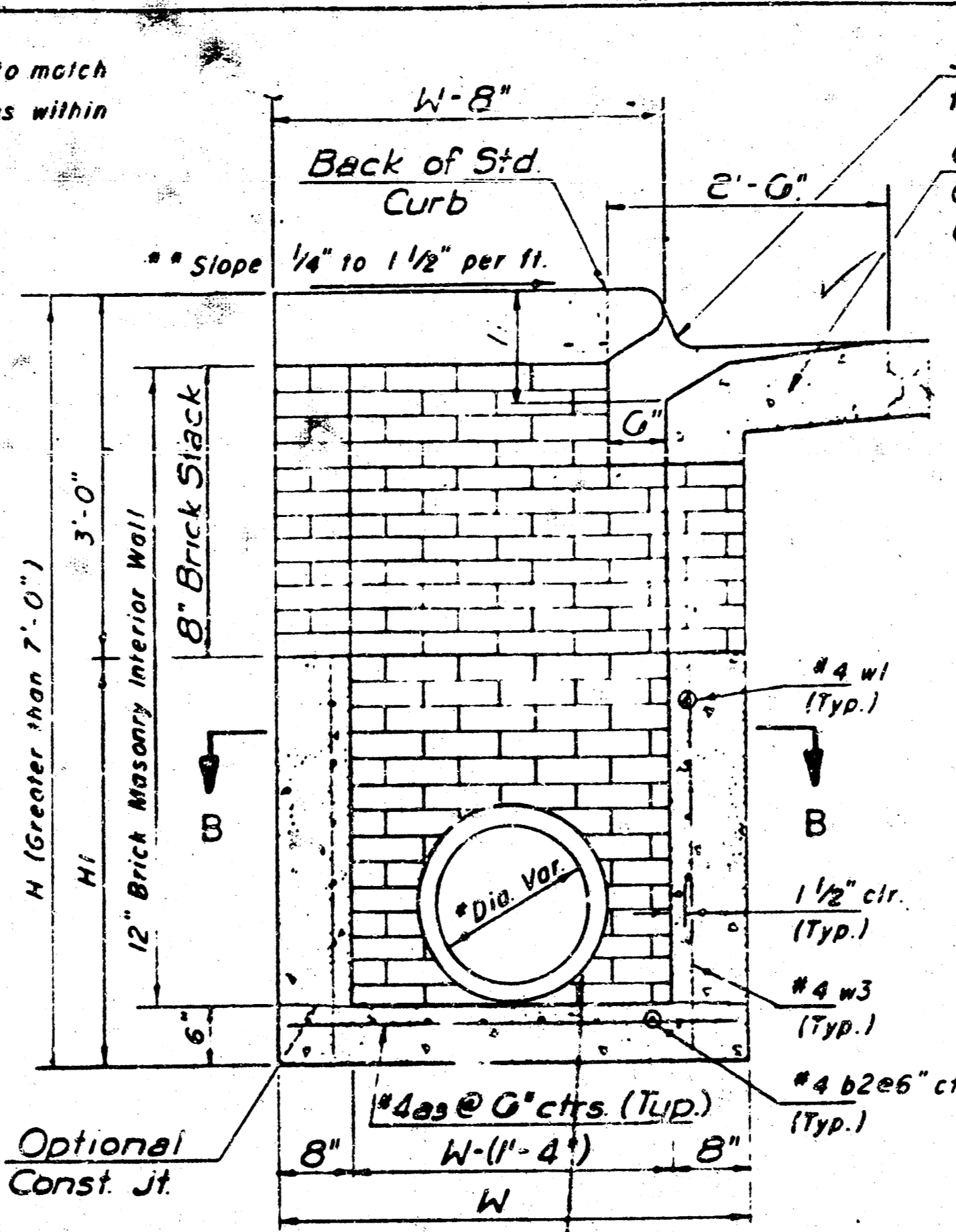
**PAVEMENT WIDENING DETAILS - WICHITA, KS #91055**

P.O. BOX 1304 2319 NORTH JACKSON JUNCTION CITY, KANSAS (913)762-5040 66441 FAX 913-762-7744	<b>KAW VALLEY ENGINEERING</b>	122 N.W. PARKWAY RIVERSIDE, MISSOURI 64150 (816)387-5033 FAX 816-587-0128
--	-----------------------------------	---

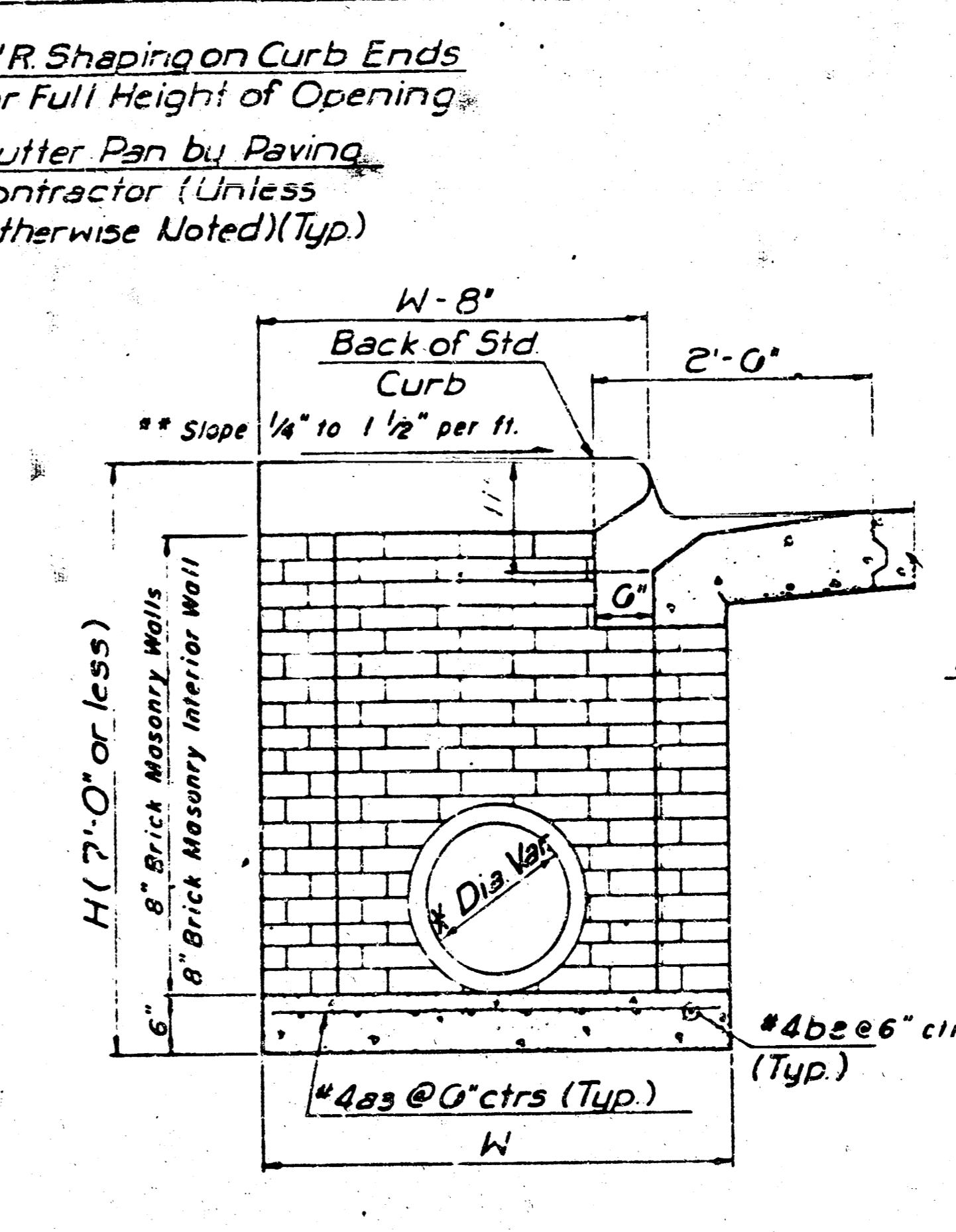
PROJ. NO. 92-1399	DATE AUG 17, 1992
DESIGNER BVC	DRAWN BY BH
CHECKED BY	ROADCW
SHEET 4 OF 6	



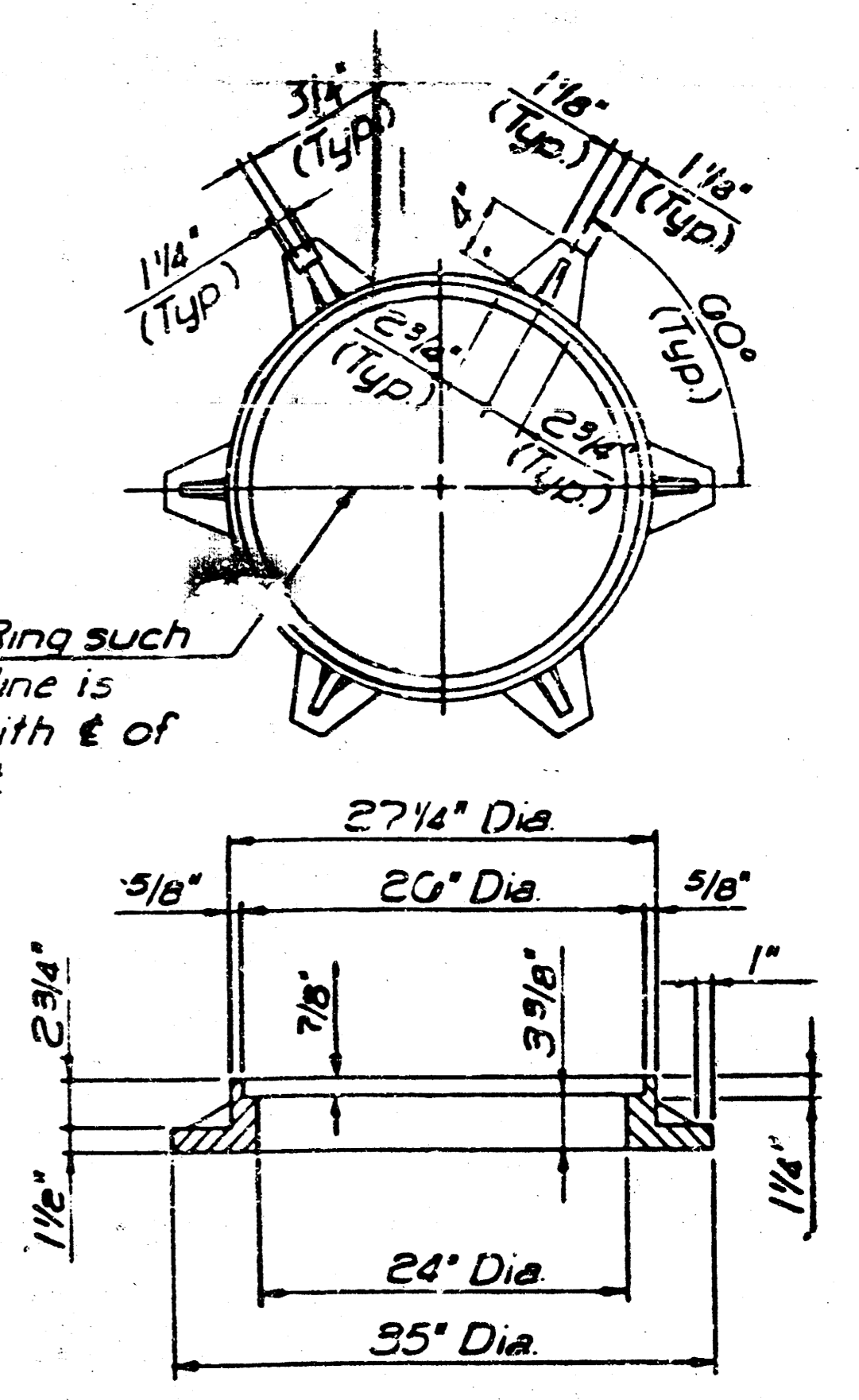
PLAN



TYPICAL INLET SECTION AT CENTER WALL (Reinforced Concrete Walls)



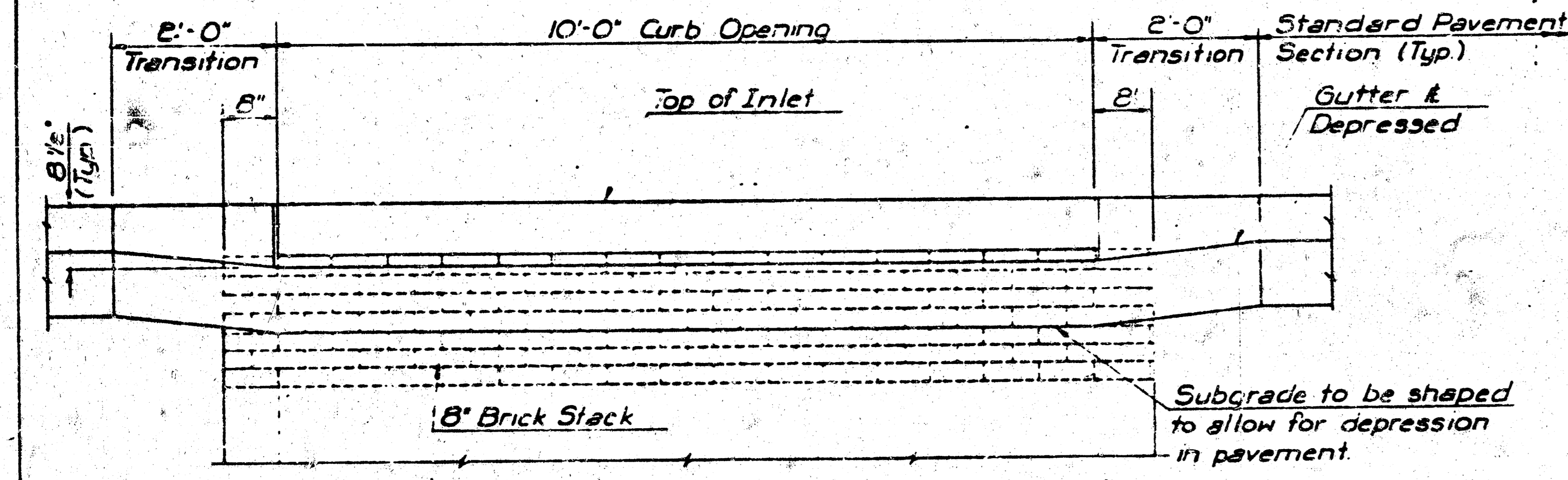
TYPICAL INLET SECTION AT CENTER WALL (Masonry Walls)



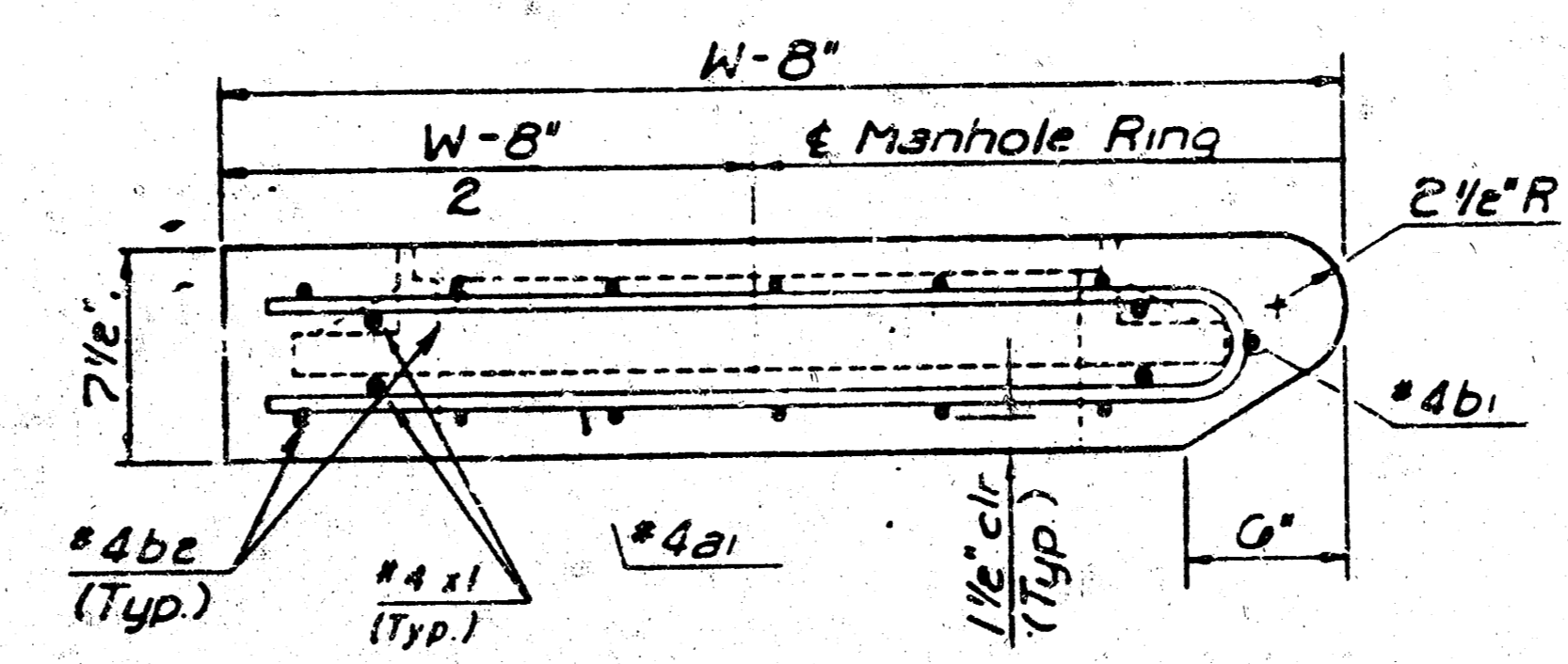
INLET FRAME (Weight = 180 LBS.)

SEE CITY OF WICHITA STANDARD MANHOLE FRAME AND COVER DETAIL SHEET FOR COVER DETAILS TO BE USED WITH INLET FRAME.

**GENERAL NOTES**  
 Concrete shall be COW Standard Paving Mix All exposed edges shall be finished with an edging tool. Reinforcing Bars shall be field bent or cut to clear pipes and inlet rings. All bars are #4 bars at 6" Spacing and shall have a minimum clearance of 1 1/2" unless otherwise noted. Floors of inlet shall be shaped with 8 Sack Sand Mix Concrete to increase hydraulic efficiency such that the inlet will be self cleaning between all inlet and/or outfall pipe(s). The Contractor will be required to construct 5" Brick Masonry Walls between the concrete inlet base and top on this inlet when H=7'-0" or less and W=6'-4" or less. WHEN W IS GREATER THAN 6'-4" AND H IS LESS THAN 7'-0", THE OUTSIDE INLET WALLS BELOW THE BRICK STACK SHALL BE REINFORCED CONCRETE CONSTRUCTION. CONCRETE TOPS TO BE INSTALLED ON THIN MORTAR CUSHION TO INSURE FULL SUPPORT ALONG BRICK WALLS. CONCRETE TOPS MAY BE CAST IN PLACE OR PRECAST. THE ENDS OF ALL PIPES INSTALLED IN INLETS SHALL BE CUT OFF FLUSH WITH THE INSIDE FACE OF THE INLET WALL.

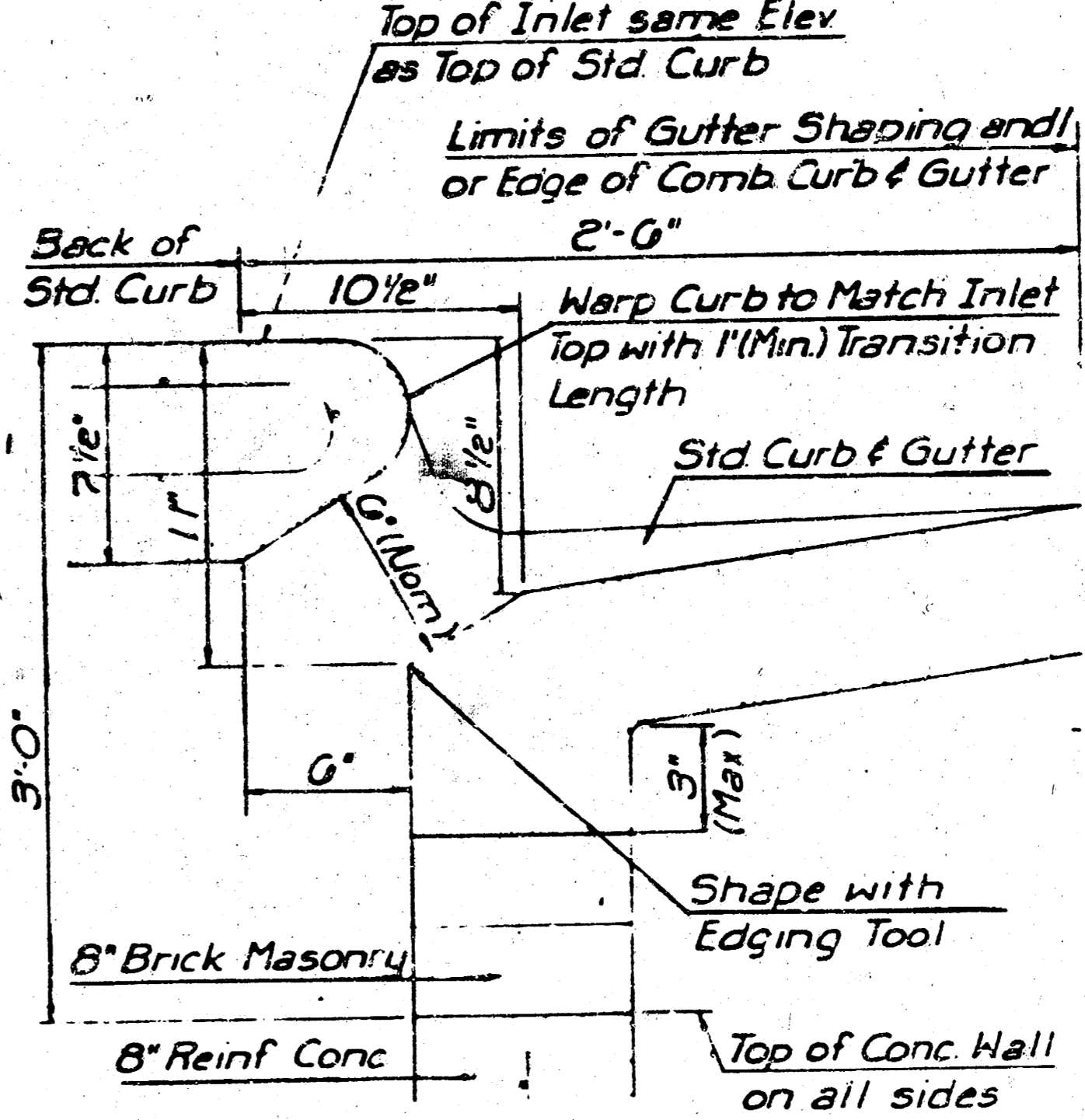


ELEVATION

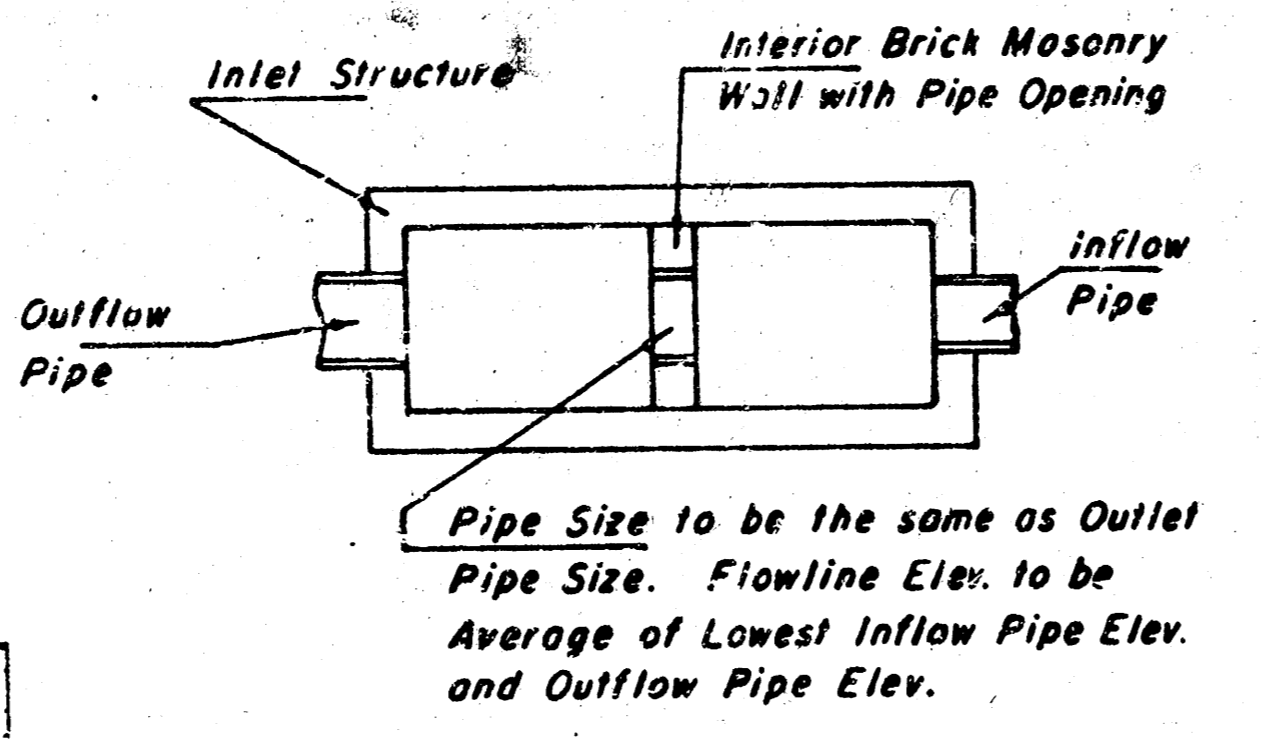


SECTION A-A

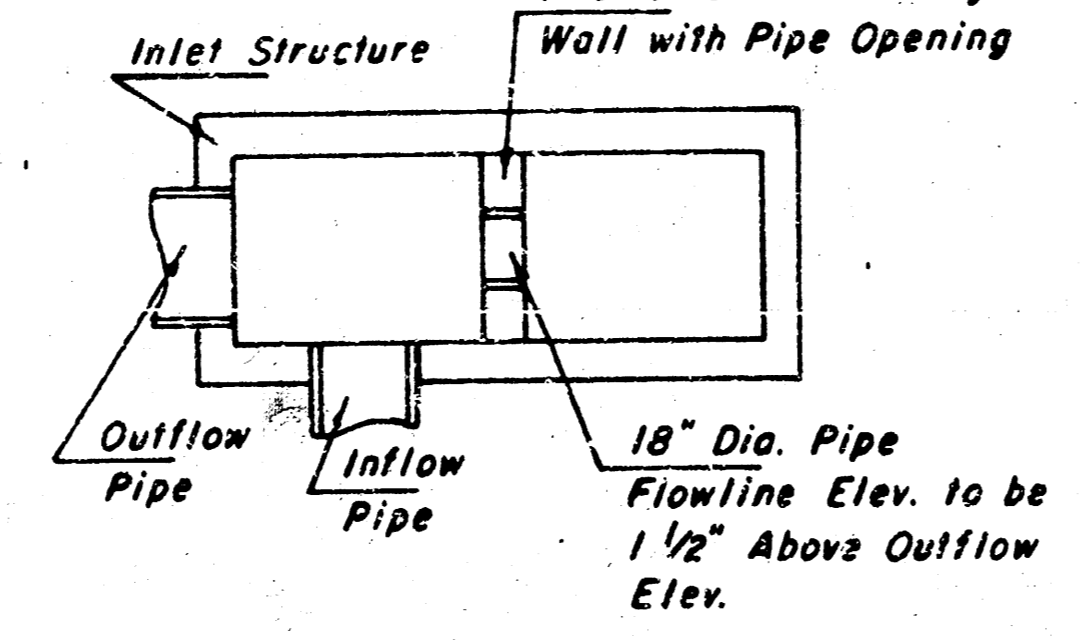
\* A center wall opening shall be provided by means of a section of reinforced concrete pipe. See Case I and Case II Below.



SECTION C-C

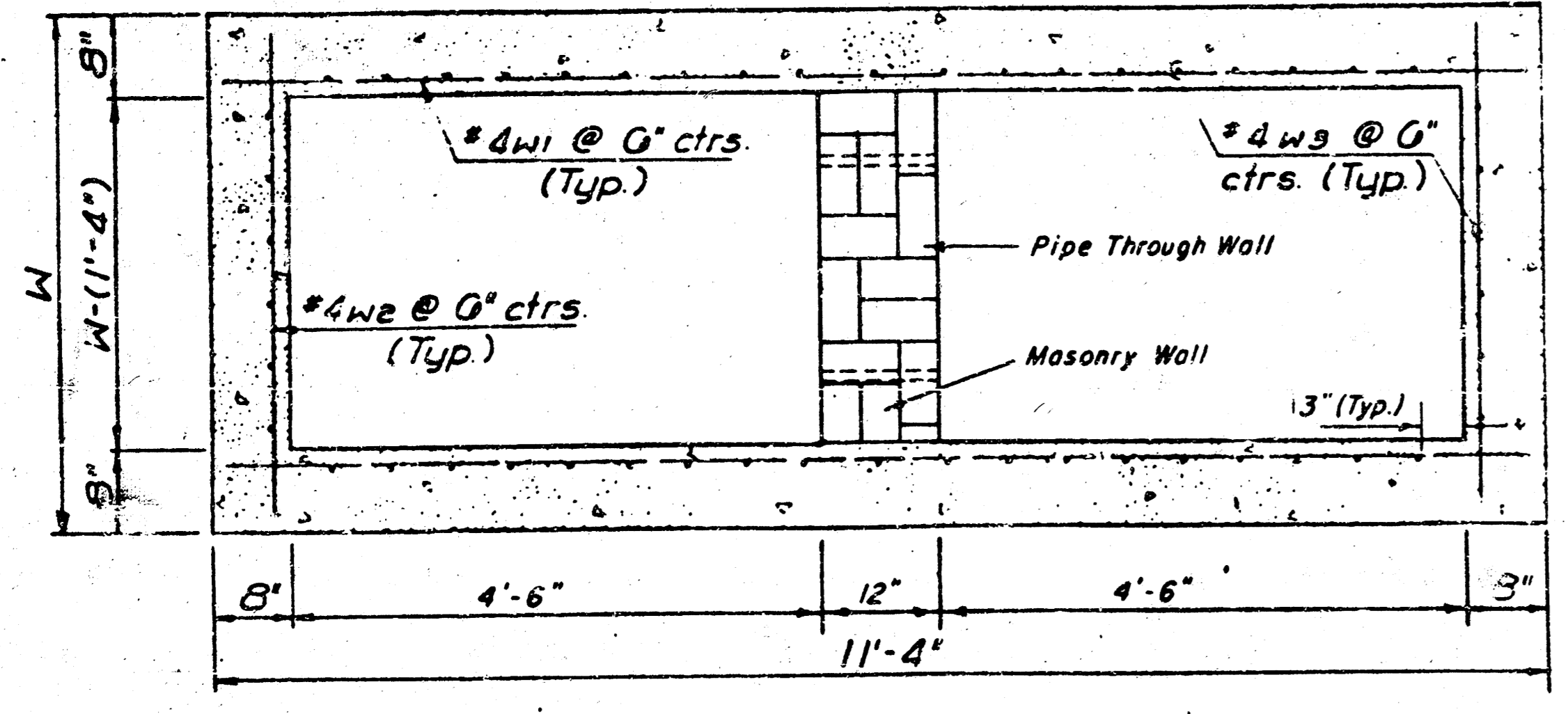


CASE I



CASE II

NOTE: Center Wall Pipe Size shall be as Specified in Inlet Construction Note on the Plan/Profile Sheets for those Cases not shown here.



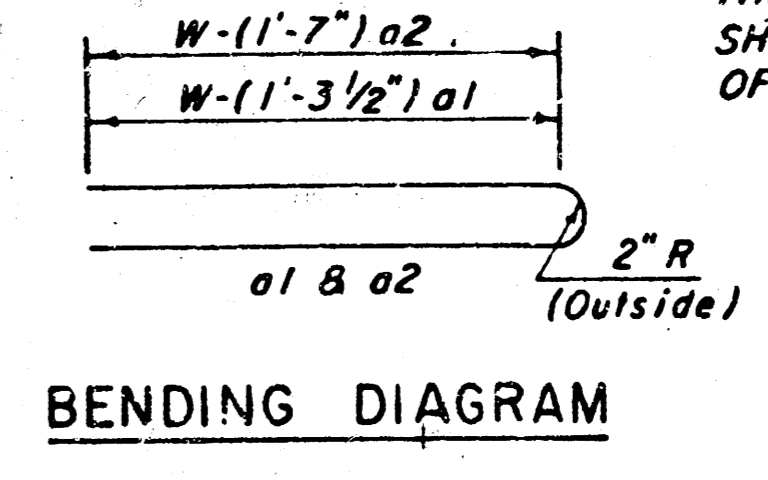
SECTION B-B

STANDARD CURB INLET PRECAST TOPS				
W	PRE-CAST TOP SIZE	SIDE OR INTERIOR WALL PIPE SIZE	CU YD. CONC.	
4'-4"	3'-8" x 11'-4" x 7 1/2"	21" Ø SMALLER	0.83 ±	
5'-4"	4'-8" x 11'-4" x 7 1/2"	24" Ø 30"	1.09 ±	
6'-4"	5'-8" x 11'-4" x 7 1/2"	36" Ø 42"	1.35 ±	
7'-4"	6'-8" x 11'-4" x 7 1/2"	48" Ø 54"	1.61 ±	
8'-4"	7'-8" x 11'-4" x 7 1/2"	60" Ø 66"	1.87 ±	

PRECAST SLAB AND FLOOR REINFORCING											
		W=4'-4"		W=5'-4"		W=6'-4"		W=7'-4"		W=8'-4"	
MARK	SIZE	NO.	LENGTH	NO.	LENGTH	NO.	LENGTH	NO.	LENGTH	NO.	LENGTH
a1	#4	13	6'-7"	13	8'-7"	13	10'-7"	13	12'-7"	13	14'-7"
a2	#4	4	6'-0"	4	8'-0"	4	10'-0"	4	12'-0"	4	14'-0"
a3	#4	23	4'-1"	23	5'-1"	23	6'-1"	23	7'-1"	23	8'-1"
b1	#4	1	9'-9"	1	9'-9"	1	9'-9"	1	9'-9"	1	9'-9"
b2	#4	23	11'-1"	29	11'-1"	35	11'-1"	41	11'-1"	47	11'-1"
x1	#4	16	3'-10"	16	4'-2"	16	4'-6"	16	4'-10"	16	5'-2"

WALL REINFORCING											
		W=4'-4"		W=5'-4"		W=6'-4"		W=7'-4"		W=8'-4"	
Mark	Size	No.	Length	No.	Length	No.	Length	No.	Length	No.	Length
w1	#4	0	11'-1"	0	11'-1"	0	11'-1"	0	11'-1"	0	11'-1"
w2	#4	0	4'-1"	0	5'-1"	0	6'-1"	0	7'-1"	0	8'-1"
w3	#4	52	2	56	2	60	2	64	2	68	2

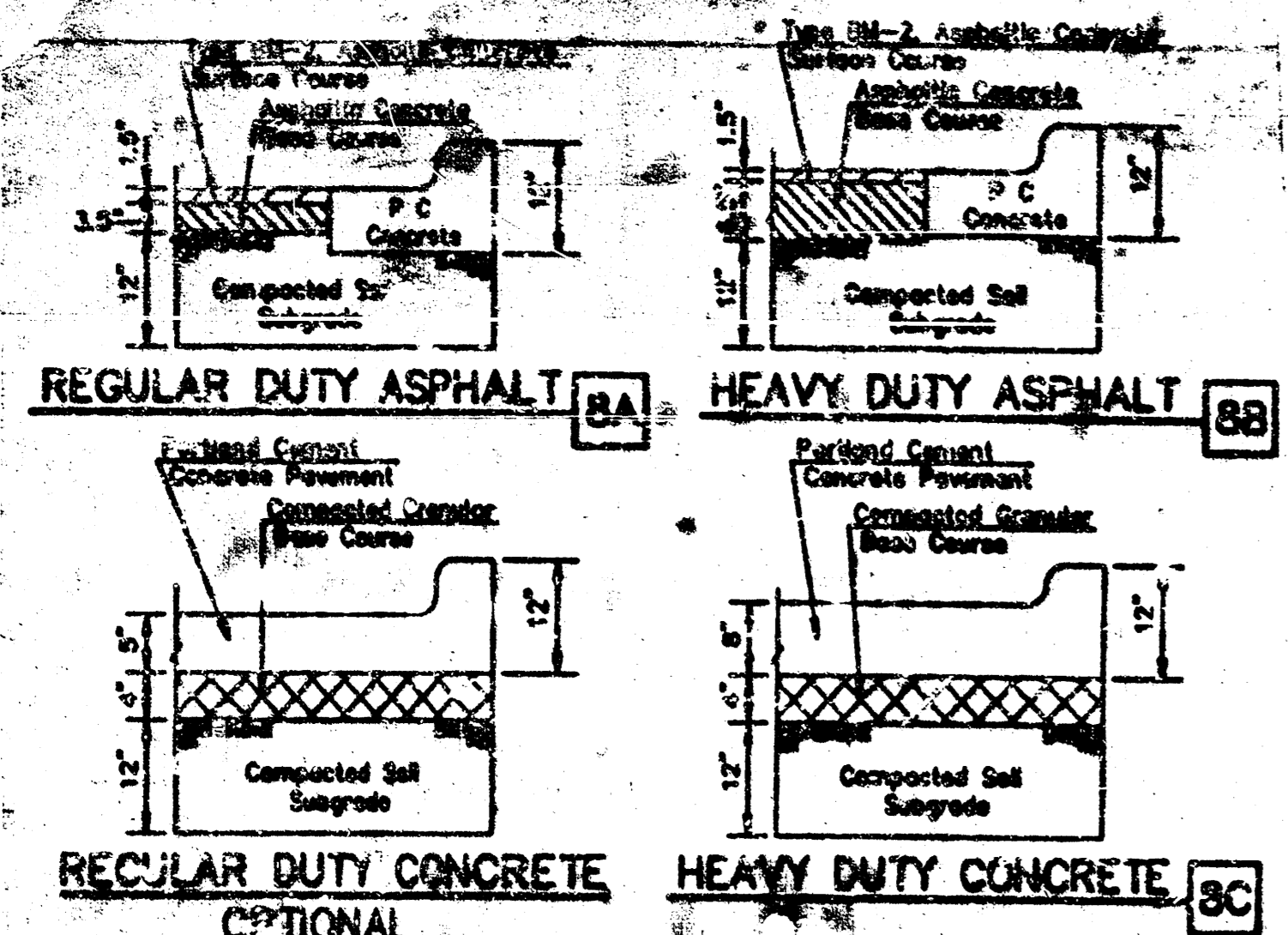
\* Field bend or cut Reinforcing as required for clearance.  
 ① 4(NI-12") (NI-12") Rounded down to nearest 0.5"  
 ② NI-3"



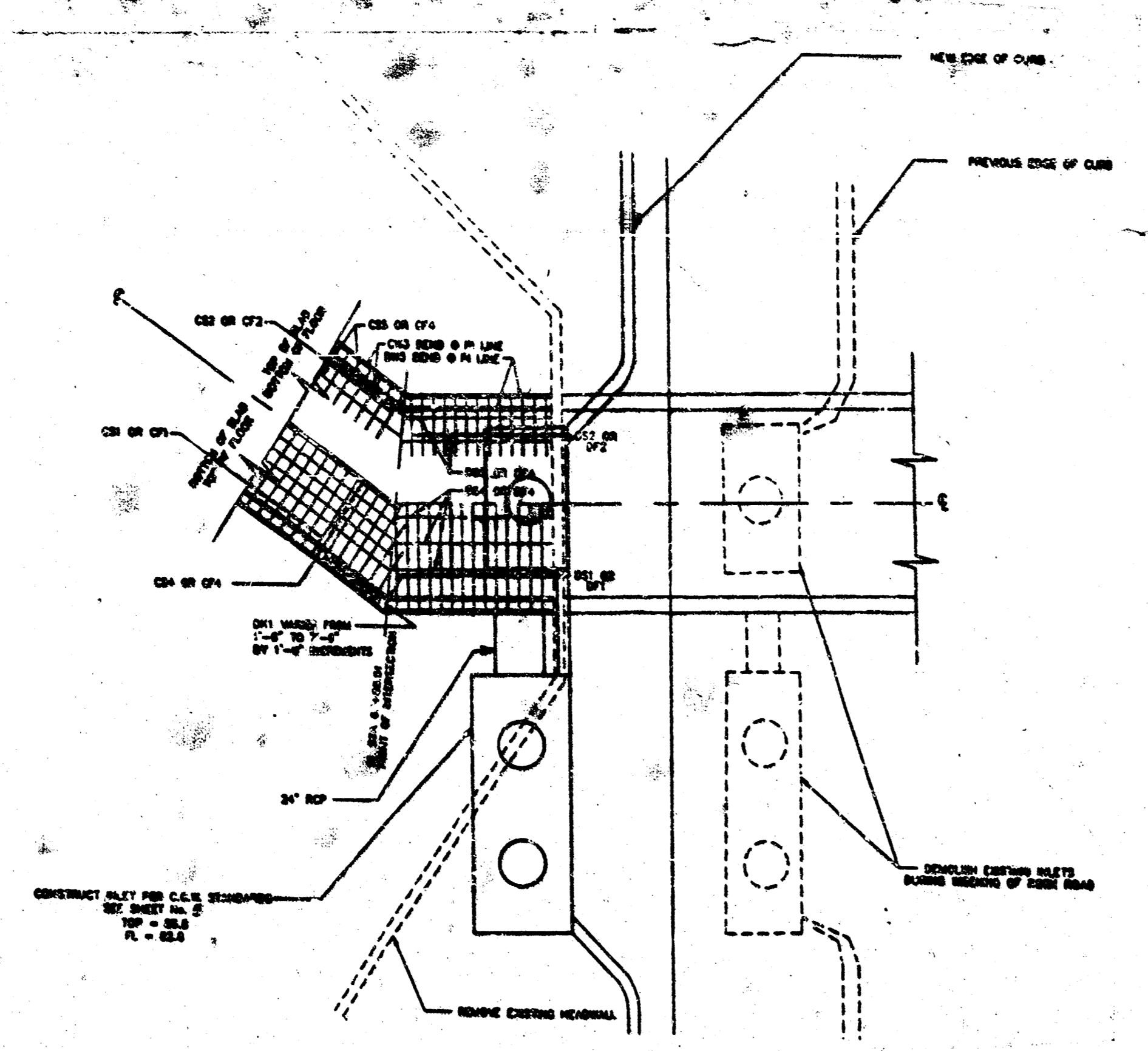
BENDING DIAGRAM

Revised 2-16-89  
**DETAIL STANDARD TYPE I CURB INLET**  
 INLET OPENING = 6" x 10"  
 CITY OF WICHITA  
 M. E. LINDEBAK, CITY ENGINEER  
 OCTOBER 1984

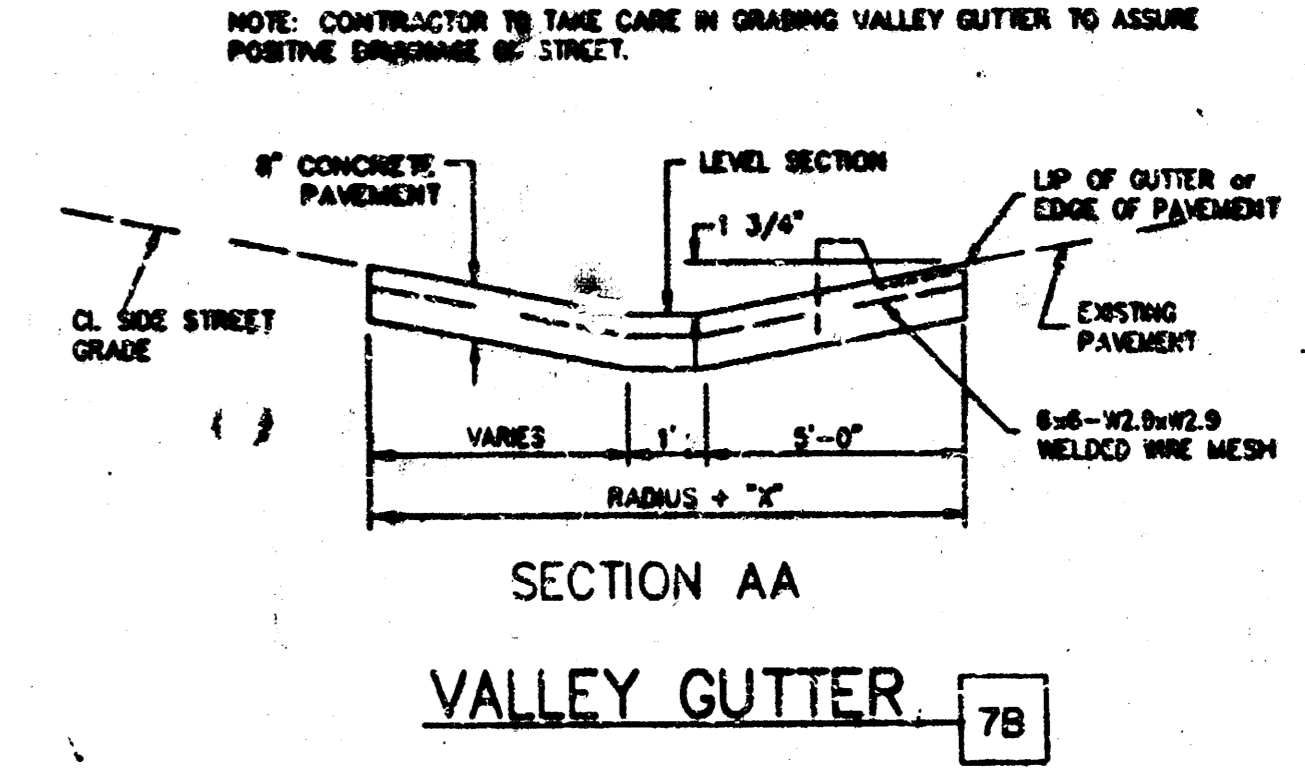
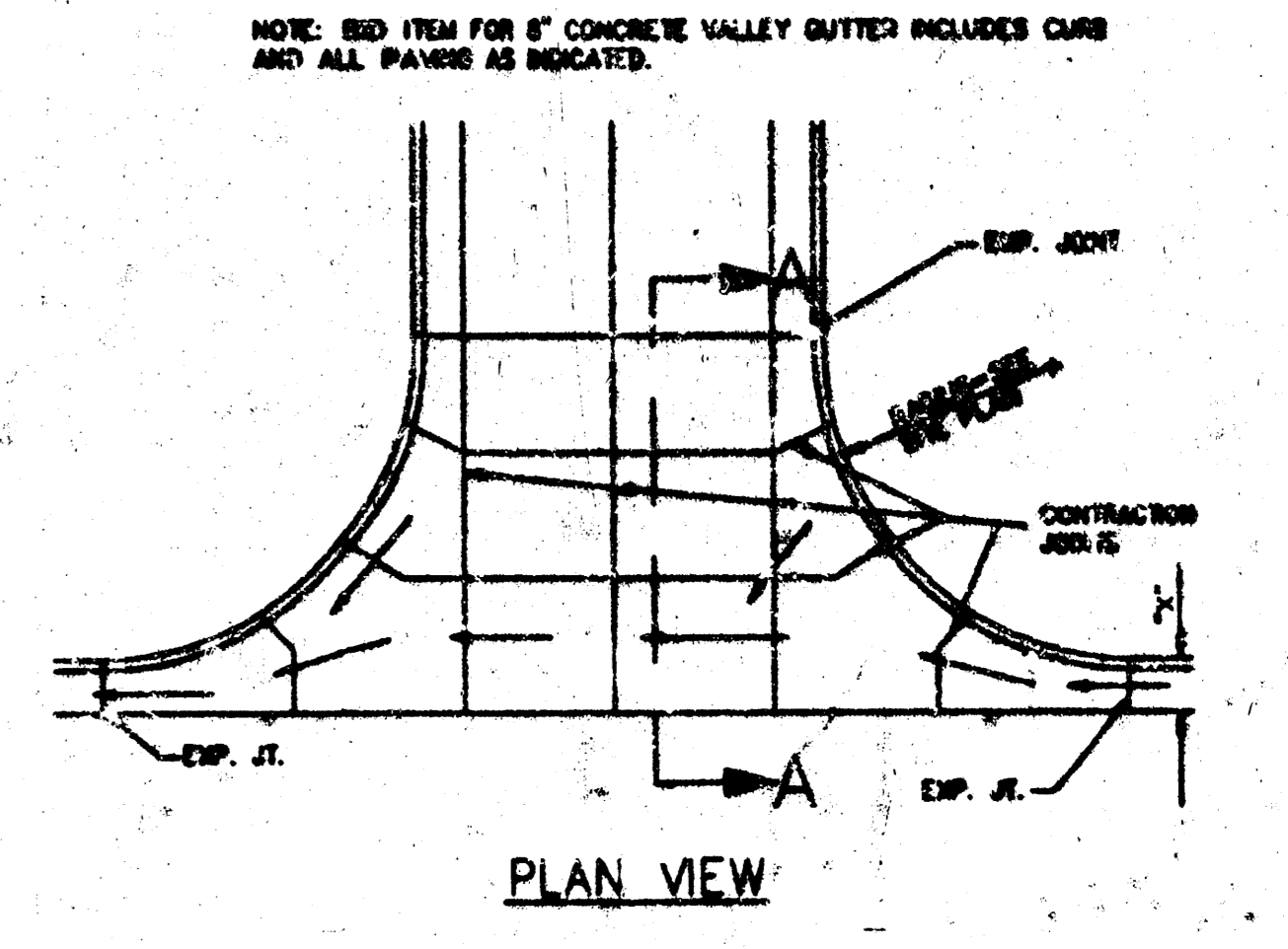
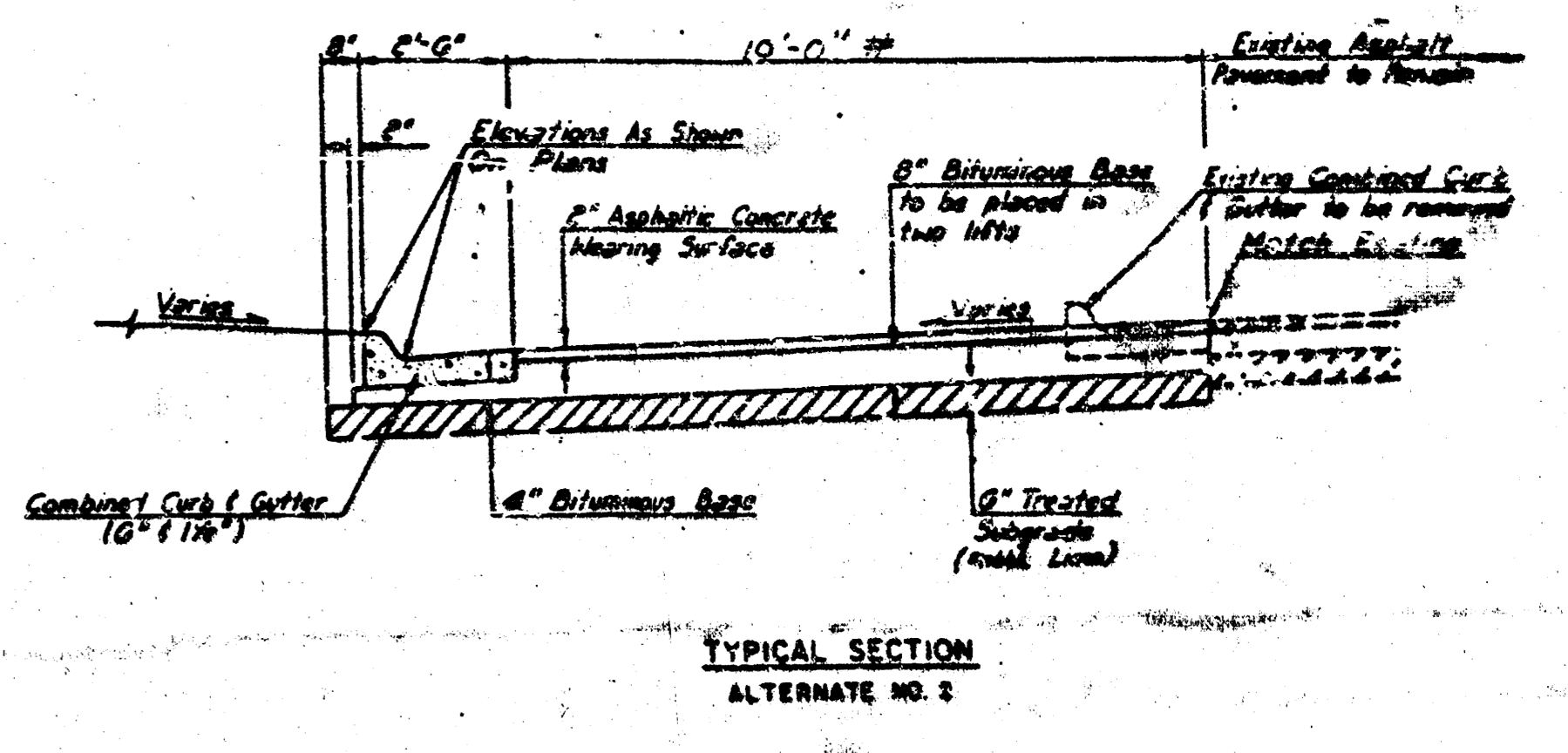
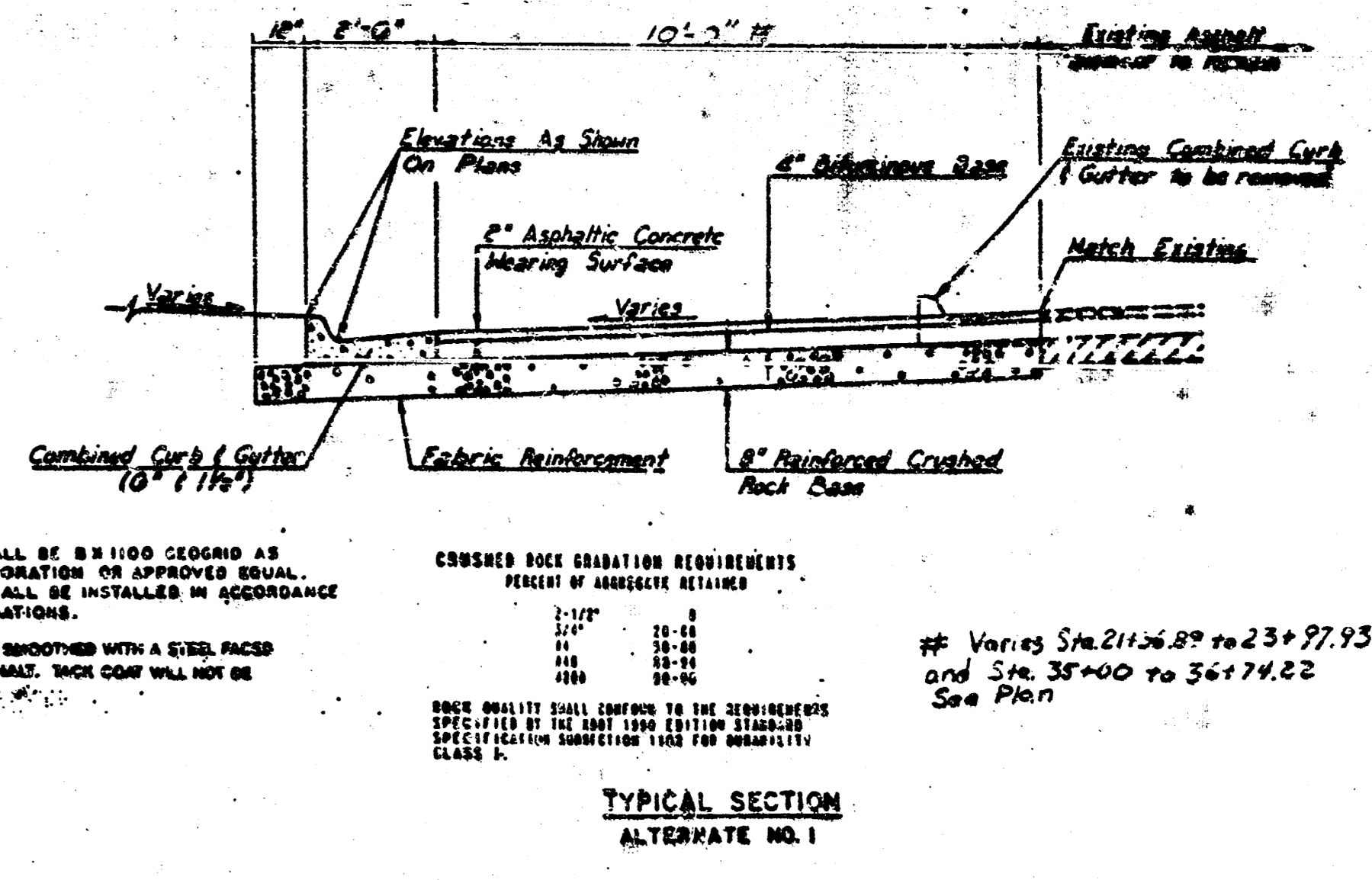
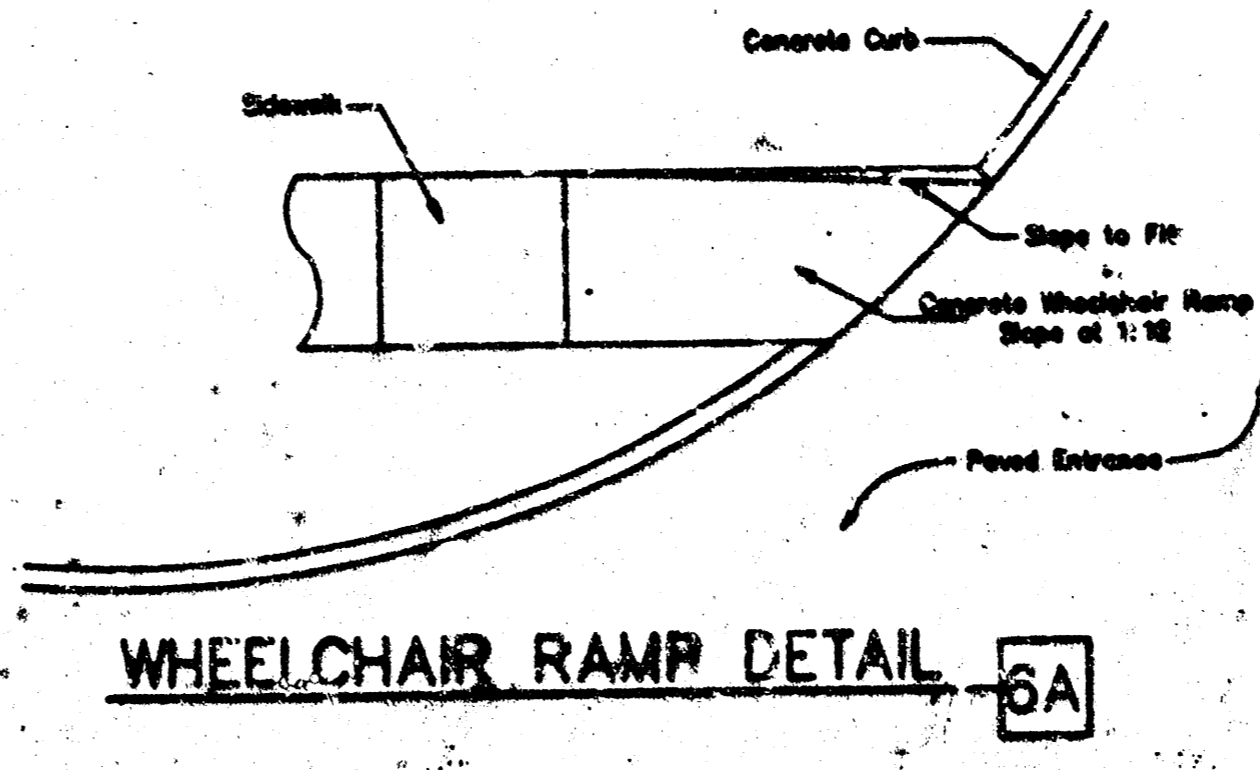
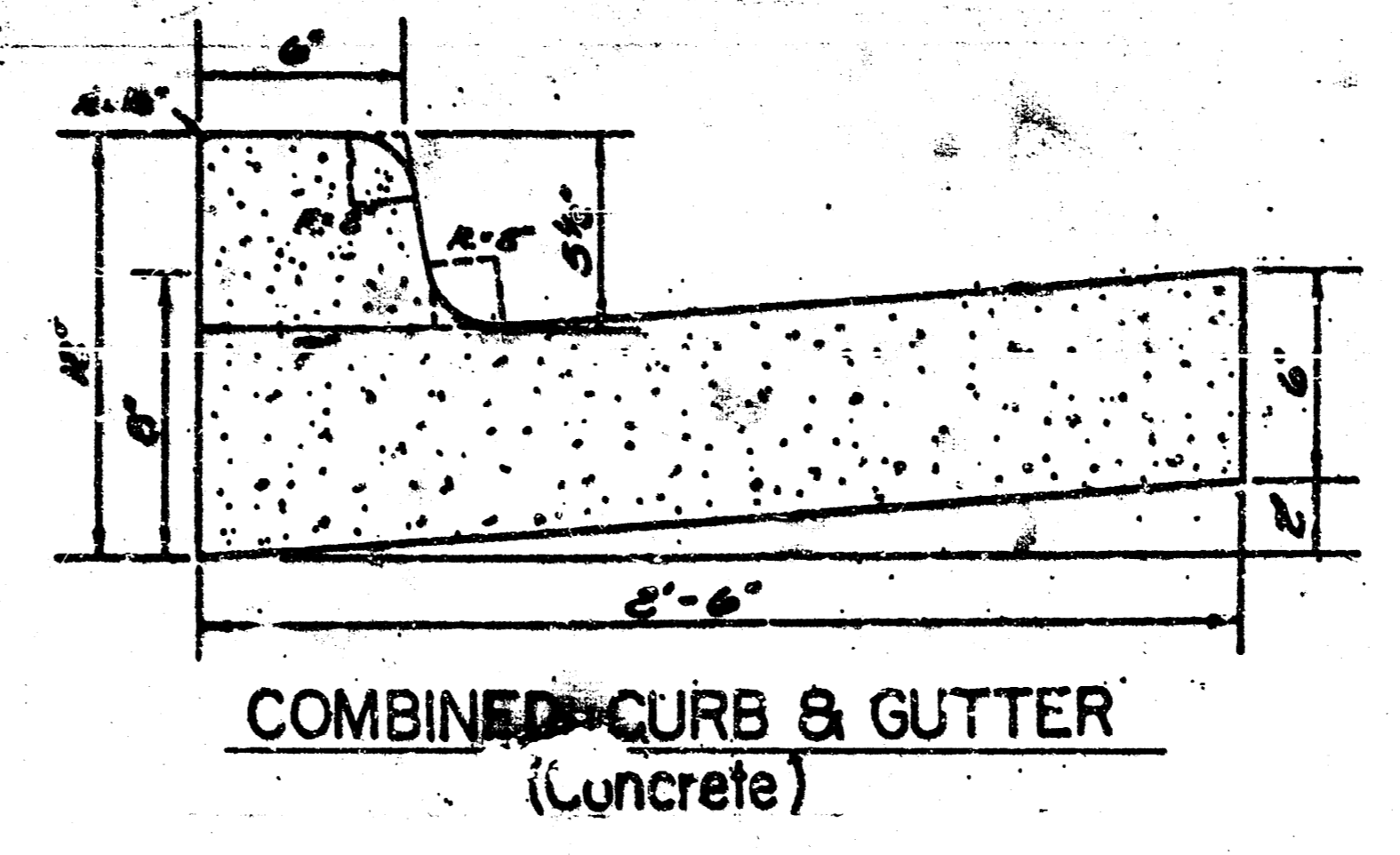
COW - STANDARD DETAILS  
 KAW VALLEY ENGINEERING & DEVELOPMENT, INC.  
 1000 S. W. 10th St., Topeka, KS 66606  
 (913) 863-8888  
 FAX (913) 863-7944



1. Flexible pavement shall be in accordance with the latest edition of the Kansas Department of Transportation's Standard Specifications for State Road and Bridge Construction, Division 500.
2. Portland cement concrete shall have a minimum compressive strength of 4000 PSI at 28 days with 6% entrained air ±2% and shall meet or exceed the specifications set forth in the latest edition of the Kansas Department of Transportation's Standard Specifications for State Road and Bridge Construction, Divisions 400 and 500.
3. Refer to Wal-Mart Sitework Specifications for Concrete Pavement Jointing, Spacing, and Details.
4. Pavement design based on unstabilized subgrade CBR of 4.0
5. Heavy Duty Concrete is an alternate pavement for 8C Heavy Duty asphalt. When plans specify 8C no alternate use allowed.



INLET RECONSTRUCTION DETAIL  
SEE SITE DEVELOPMENT PLANS (SAM'S CLUB)



8/28/92	REVISED PER CITY REQUEST	JG
NO. 1	DATE	BY
<b>PAVEMENT DETAILS</b>		
P.O. BOX 1284 100 SOUTH MAIN ANCHORAGE, ALASKA 99501 907-263-2040 FAX 907-263-7744	<b>RAW VALLEY</b> ENGINEERING	P.O. BOX 100 111 S. POND ANCHORAGE, ALASKA 99501 907-263-2040 FAX 907-263-7744
PROJ. NO. 92-1293	DATE: 8/7/92	SCALE: AS SHOWN
DESIGNED BY: JG	CHECKED BY: JG	DATE: 8/7/92