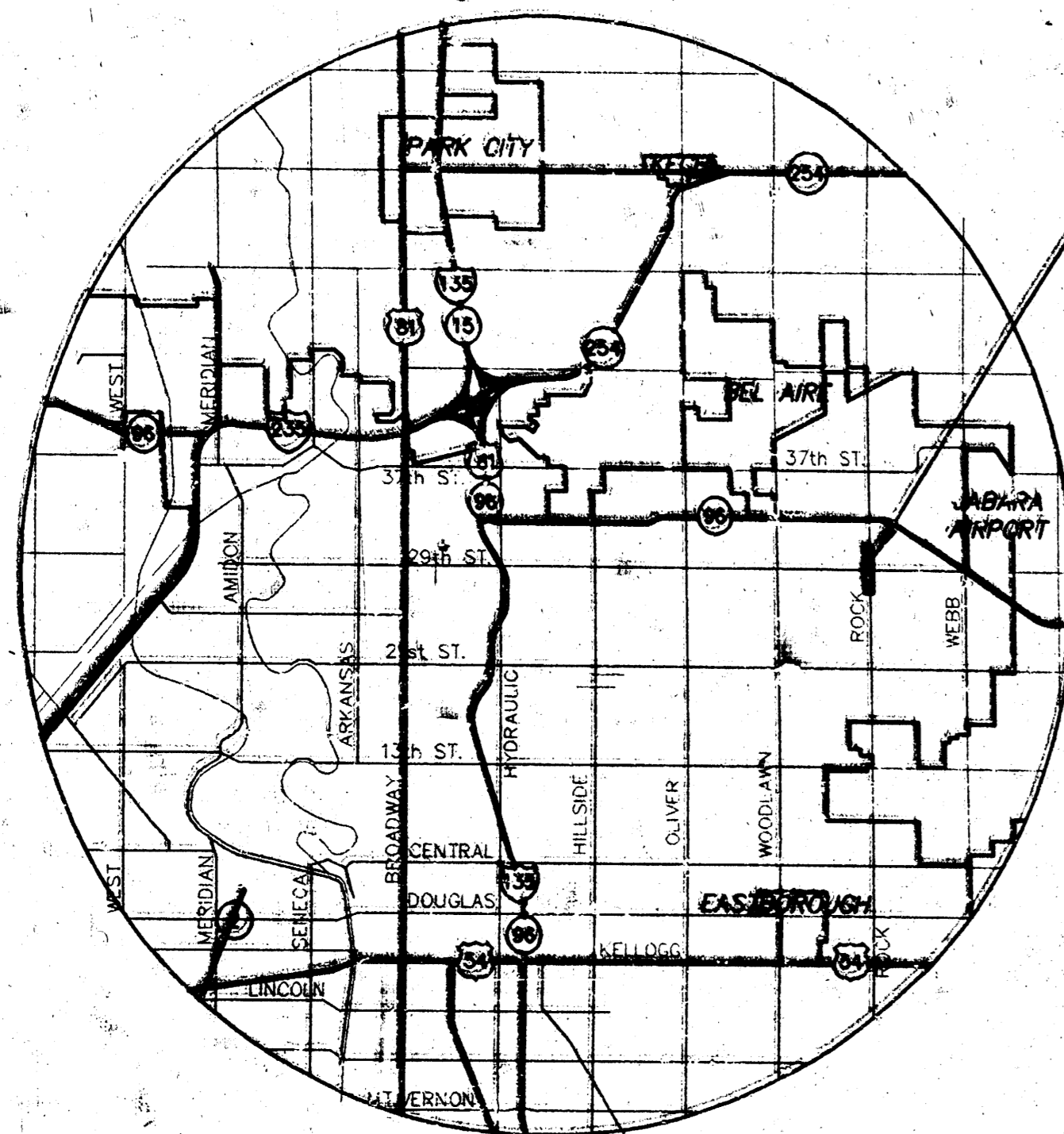


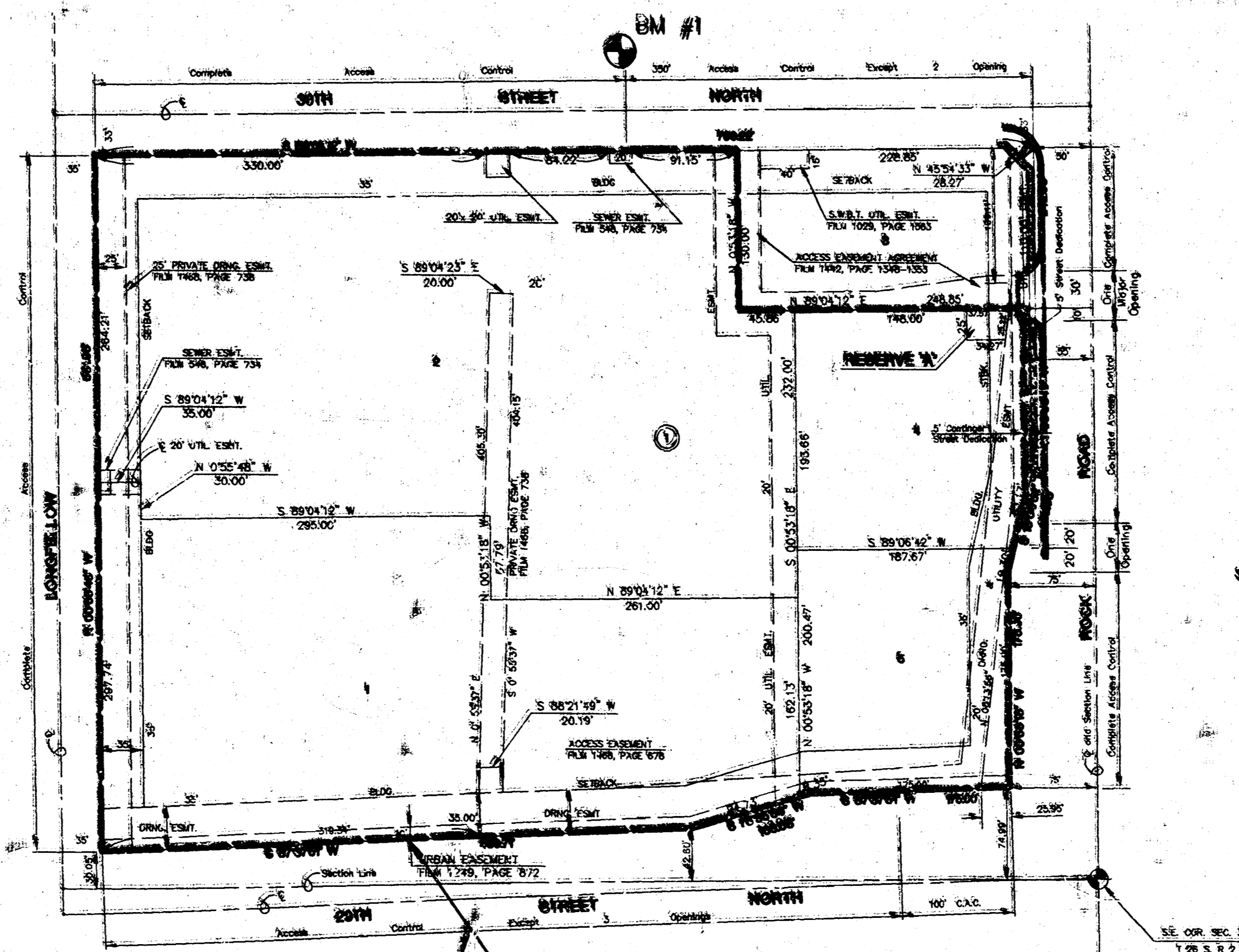
PAVING PLANS NORTHROCK CROSSING AT COTTONWOOD SQUARE

ACCEL/DECEL LANES AT ROCK ROAD AND 30TH ST. NORTH
PROJECT NO. 472-82488

CITY OF WICHITA, KANSAS
MICHAEL E. LINDEBAK, CITY ENGINEER
INDEX CODE 762633



PROJECT LOCATION



BENEFIT DISTRICT BOUNDARY

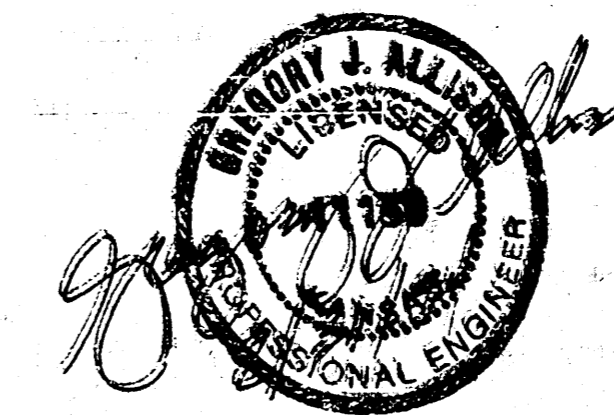
BENCHMARKS

BM #1 TOP OF CURB NORTH SIDE OF 30TH ST. NO.
AT THE S.E. CORNER OF LOT 19.
ELEV. = 206.14

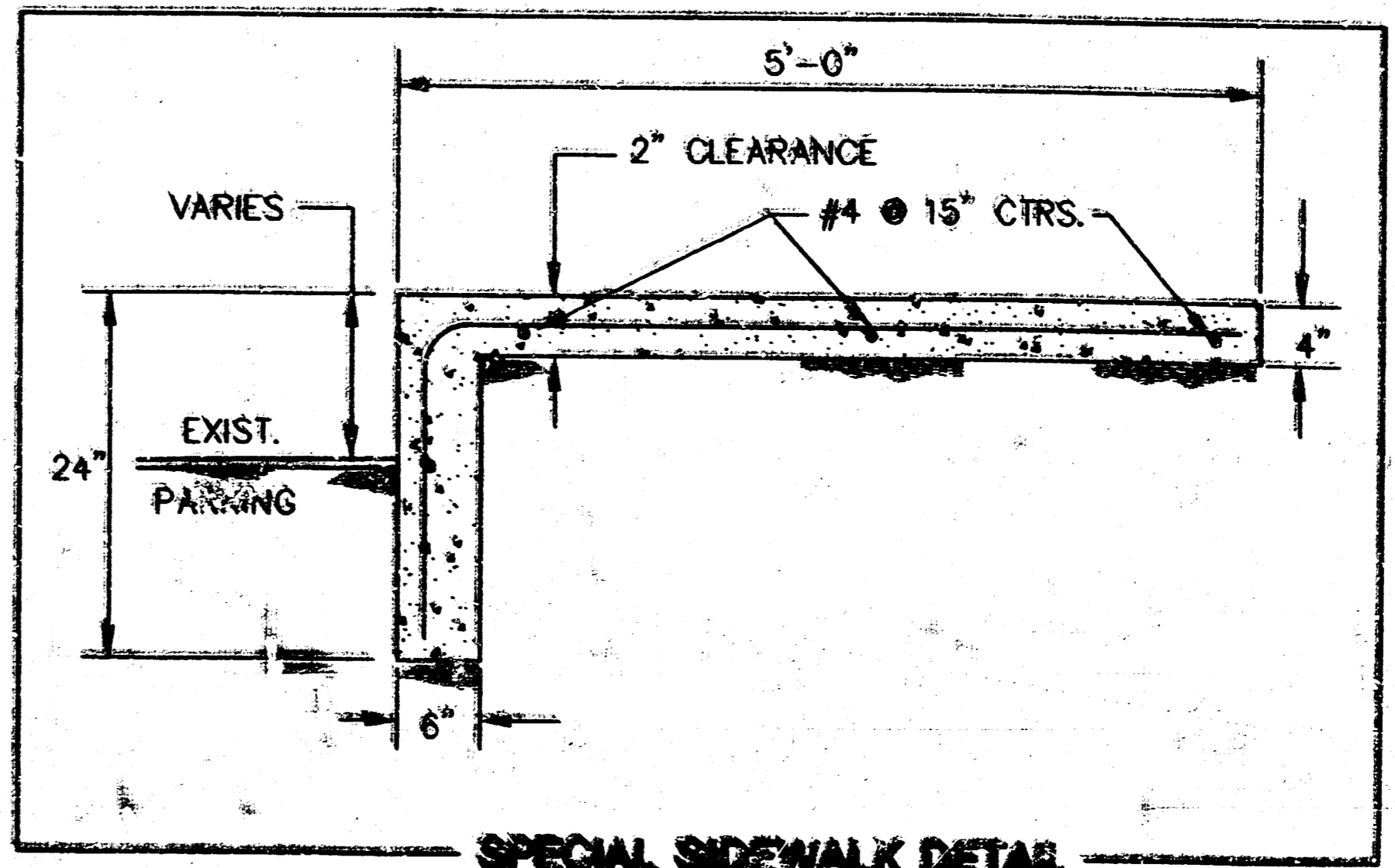
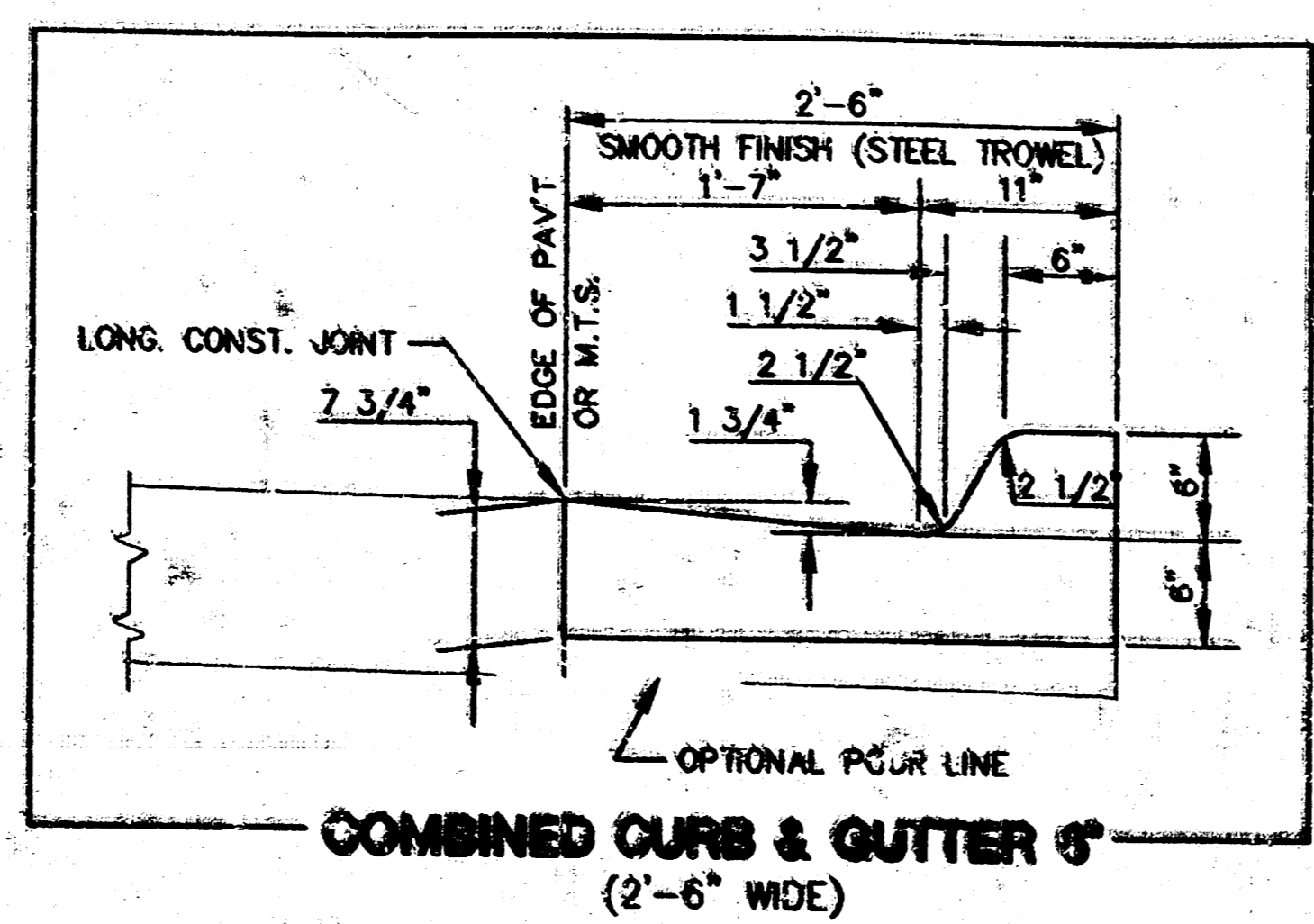
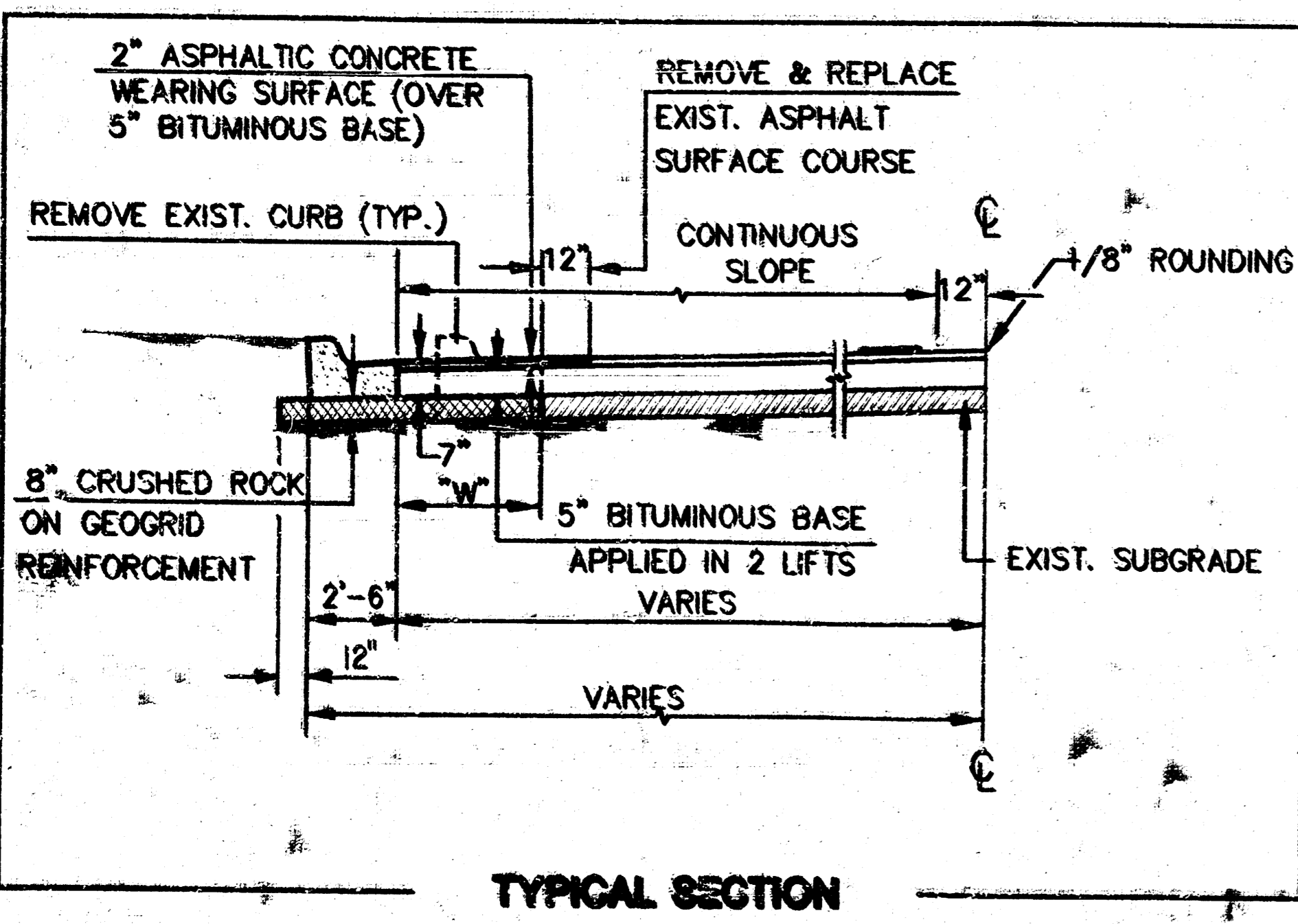
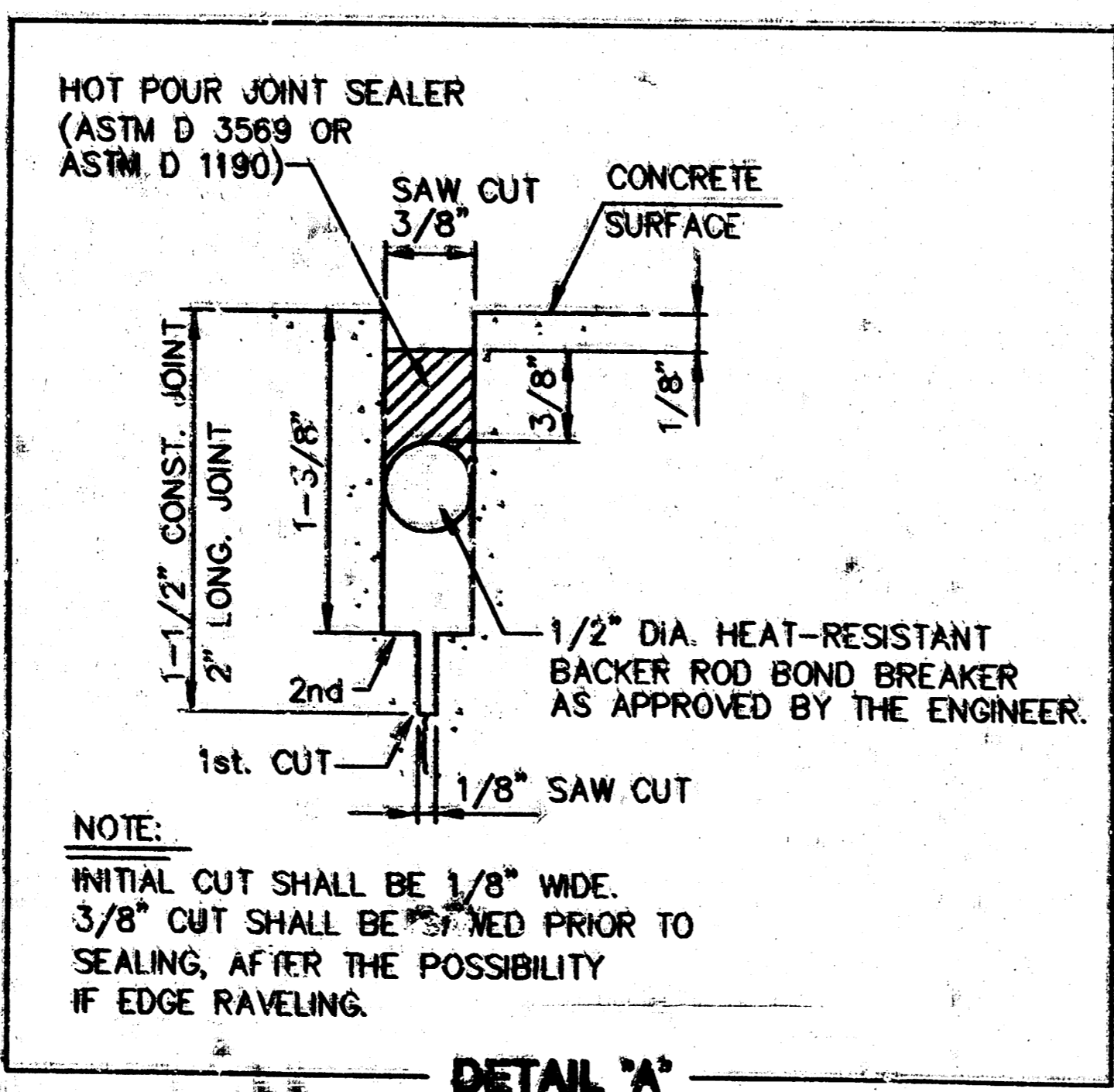
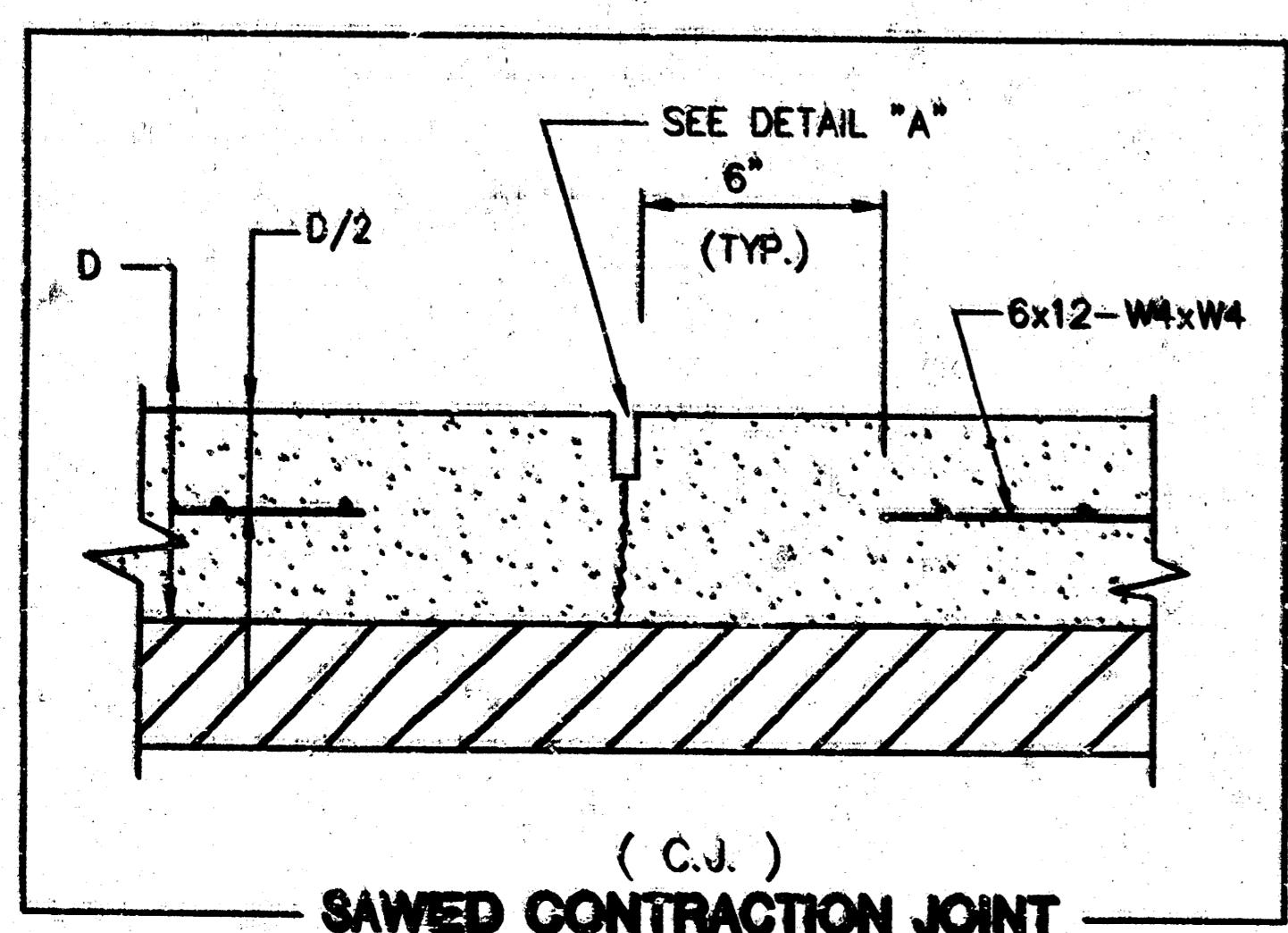
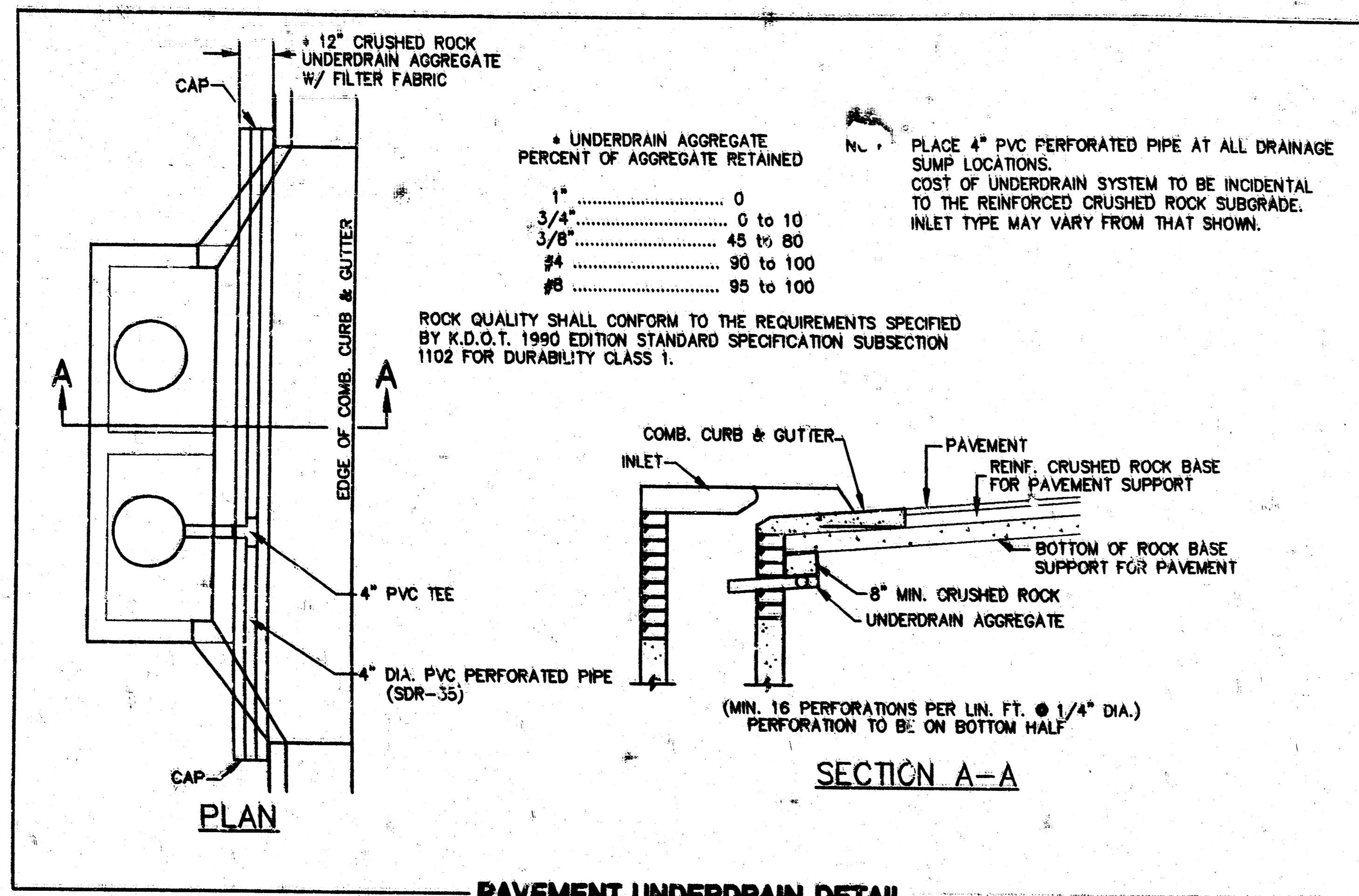
INDEX TO DRAWINGS

SHEET NO.	DESCRIPTION
1	TITLE SHEET
2	GENERAL NOTES & DETAILS
3	INLET DETAILS
4	STANDARD DRIVE ENTRANCE DETAILS
5	ACCEL/DECEL LANE
6	STRIPING PLAN
7-8	FINAL PLATS

*1.0 BOOKED
2-26-78
MEL
D-16*



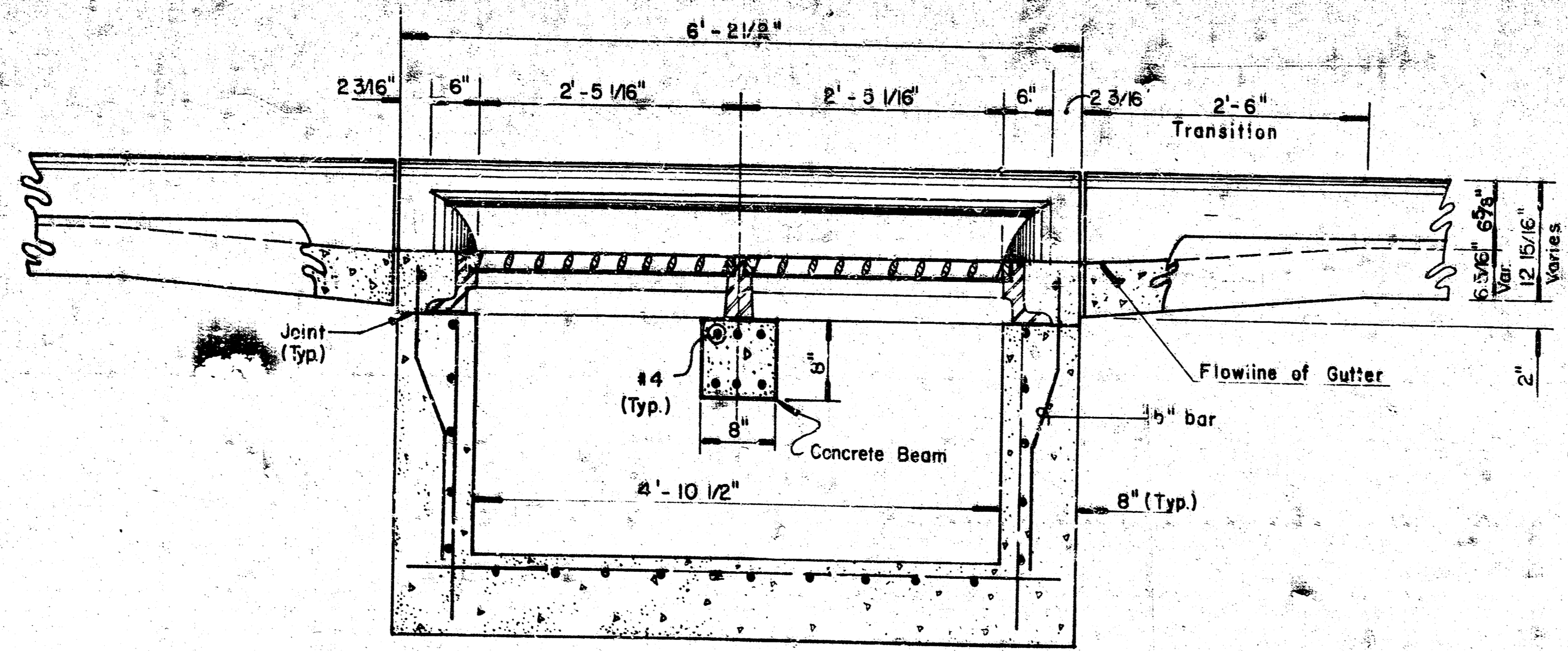
	NORTHROCK CROSSING AT COTTONWOOD SQUARE	Drawn by C.J.A.
	PAVING PLANS	Checked by C.J.A.
MID-KANSAS ENGINEERING CONSULTANTS INC. 3500 NORTH ROCK ROAD BUILDING #800 WICHITA, KANSAS 67226		Date 4/24
(316) 636-5566		Sheet 1 of 8



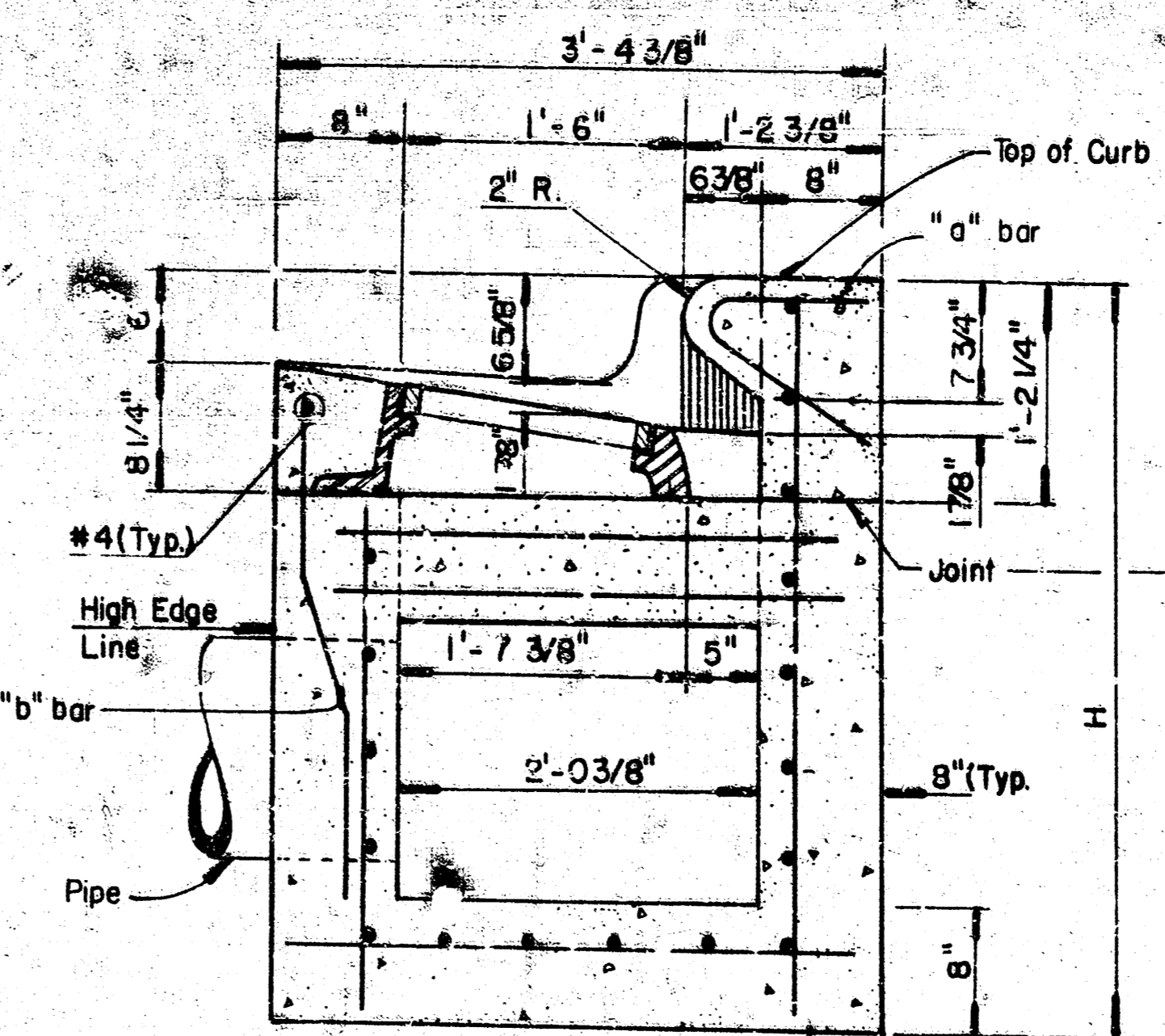
GENERAL NOTES

- CONTRACTOR WILL BE REQUIRED TO PROVIDE A MINIMUM ADVANCE NOTICE OF FORTY-EIGHT (48) HOURS TO UTILITY COMPANIES PRIOR TO STARTING ANY EXCAVATION AS FOLLOWS:
KANSAS ONE-CALL 1-800-344-7233 OR 887-2470 (LOCAL WCHITA)
- THE CONTRACTOR MUST NOTIFY THE FOLLOWING IN CASE OF EMERGENCY:
SOUTHWESTERN BELL TELEPHONE COMPANY 1-571-2115
CABLEVISION 262-4270 OR 263-2061
KPL GAS SERVICE COMPANY 263-7511
KANSAS GAS & ELECTRIC 264-1141
CITY OF WICHITA WATER & SEWER 268-4908
ARKLA 942-8350
- THE CONTRACTOR SHALL GIVE ALL PROPERTY OWNERS AND/OR TENANTS OF DEVELOPED PROPERTY ABUTTING THE PROJECT LIMITS A MINIMUM OF TEN (10) DAYS ADVANCE NOTICE PRIOR TO THE START OF CONSTRUCTION.
- UTILITY SERVICE LINES, POLES, VALVE BOXES, METERS, AND ETCETERA ARE TO BE ADJUSTED AS NECESSARY BY OTHERS PRIOR TO CONSTRUCTION UNLESS THE PLANS SPECIFICALLY CALL FOR THEIR ADJUSTMENT BY THE CONTRACTOR OR UNLESS THE PLANS OR CONTRACT DOCUMENTS SPECIFICALLY IDENTIFY A UTILITY TO BE ADJUSTED BY ITS OWNER DURING CONSTRUCTION. EXISTING UTILITIES AND THEIR LOCATION, AS SHOWN ON THE PLANS, REPRESENT THE BEST INFORMATION OBTAINABLE FOR DESIGN. THE CONTRACTOR WILL BE REQUIRED TO WORK AROUND EXISTING UTILITIES WITHIN THE RIGHT-OF-WAY WHICH DO NOT CONFLICT WITH PROPOSED CONSTRUCTION.
- ALL ADJACENT BUILDINGS, STRUCTURES, PARKING LOTS, DRIVES, STREET PAVEMENTS, UTILITY LINES, UTILITY STRUCTURES AND APPURTENANCES OTHER THAN SHOWN FOR REPLACEMENT SHALL BE PROTECTED FROM DAMAGE DURING CONSTRUCTION OF THE PROJECT. DAMAGED ITEMS SHALL BE REMOVED AND REPLACED BY THE CONTRACTOR AT NO ADDITIONAL COST TO THE OWNER. SHEETING AND SHORING MAY BE REQUIRED TO PROTECT THE ITEMS MENTIONED ABOVE.
- A FULL DEPTH SAW CUT OF EXISTING SURFACE COURSES OR ONE-FOURTH THE DEPTH OF THE EXISTING TOTAL PAVEMENT THICKNESS SHALL BE PROVIDED AT LOCATIONS WHERE PROPOSED CONSTRUCTION ABUTS AN EXISTING SURFACE COURSE OR PAVEMENT FOR WHICH PARTIAL REMOVAL OF THAT SURFACE OR PAVEMENT IS REQUIRED. SAWED JOINT TO FACILITATE REMOVAL WITHIN THREE (3) FEET OF EXISTING JOINTS WILL NOT BE PERMITTED AND FOR SUCH INSTANCES THE LIMITS OF REMOVAL SHALL EXTEND TO THE EXISTING JOINT. SUCH SAW CUTS WILL NOT BE PAID FOR DIRECTLY AND THIS COST SHALL BE CONSIDERED AS SUBSIDIARY TO THE REMOVAL OF THE SURFACE OR PAVEMENT.
- RUBBLE FROM THE REMOVAL OF PAVEMENT, MISCELLANEOUS STRUCTURES AND EXCESS EXCAVATION WHICH IS TO BE WASTED SHALL BE DISPOSED OF ON SITES TO BE PROVIDED BY THE CONTRACTOR. THESE SITES SHALL BE APPROVED BY THE ENGINEER AS TO SUITABILITY, APPEARANCE AND SITE LOCATION. LOCATIONS THAT, IN THE OPINION OF THE ENGINEER, WILL LEAVE AN UNSIGHTLY APPEARANCE WILL NOT BE APPROVED. ALL DISPOSAL SITES MUST BE APPROVED BY THE KANSAS DEPARTMENT OF HEALTH AND ENVIRONMENT. MATERIAL EITHER STOCKPILED OR DISPOSED OF IN A FLOOD PLAIN WOULD REQUIRE A KANSAS STATE BOARD OF AGRICULTURE PERMIT. ANY MATERIAL DUMPED IN WATERS OF THE UNITED STATES OR WETLANDS IS SUBJECT TO U.S. CORPS OF ENGINEERS PERMITTING REGULATIONS. ANY MATERIAL BURIED OR STOCKPILED BEYOND APPROVED CONSTRUCTION LIMITS WOULD REQUIRE ADDITIONAL ARCHEOLOGICAL INVESTIGATIONS UNLESS BURIED IN A PREVIOUSLY APPROVED BORROW LOCATION.
- PROPERTIES WITHIN THE PROJECT LIMITS MAY HAVE PRIVATE IMPROVEMENTS, I.E., SPRINKLER SYSTEMS, FENCES, PLANTERS, SIGNS, ETC., IN PUBLIC RIGHT-OF-WAY WHICH CONFLICT WITH NEW CONSTRUCTION. CONTRACTOR WILL BE REQUIRED TO REMOVE SUCH IMPROVEMENTS SHOULD THEY NOT BE REMOVED BY THEIR OWNER AT THE TIME OF CONSTRUCTION OF THE PROJECT. THE CONTRACTOR WILL BE REQUIRED TO SALVAGE ALL SPRINKLER HEADS, VALVES AND OTHER REUSABLE MATERIALS AND GIVE SUCH TO THEIR OWNER. IMPROVEMENTS NOT IN CONFLICT WITH NEW CONSTRUCTION SHALL BE PROTECTED FROM DAMAGE AND SHALL REMAIN IN PLACE. ALL WORK IN CONNECTION WITH REMOVAL OF THESE ITEMS SHALL BE CONSIDERED AS SUBSIDIARY TO "CLEARING RIGHT-OF-WAY AND SITE PREPARATION".
- SPECIFIC DRIVE LOCATIONS NOTED ON THE PLANS HAVE BEEN DISCUSSED WITH THE RESPECTIVE PROPERTY OWNERS. DRIVEWAY WIDTHS AND OTHER LOCATIONS SHOWN ARE TENTATIVE. CONTRACTOR WILL BE REQUIRED TO OBTAIN A PROPERLY EXECUTED DRIVEWAY REQUEST FORM SIGNED BY PROPERTY OWNER OR HIS AUTHORIZED REPRESENTATIVE VERIFYING SUCH DRIVEWAY WIDTHS AND LOCATIONS. SUCH FORMS SHALL BE SUBMITTED TO THE ENGINEER FOR HIS REVIEW AND APPROVAL.
- TREES AND SHRUBS IN PUBLIC RIGHT-OF-WAY WHICH ARE IN DIRECT CONFLICT WITH PROPOSED NEW CONSTRUCTION SHALL BE REMOVED BY THE CONTRACTOR WITH THE ENGINEER'S APPROVAL. TREES AND SHRUBS WHICH ARE NOT IN DIRECT CONFLICT WITH PROPOSED NEW CONSTRUCTION SHALL BE SAVED AND PROTECTED FROM DAMAGE.
- CONTRACTOR SHALL GIVE PROPERTY OWNERS ABUTTING THIS PROJECT, WHOSE YARDS WILL BE LOWER THAN THE NEW FINISHED GRADE ELEVATIONS AT THE RIGHT-OF-WAY LINE, AN OPPORTUNITY TO UTILIZE EXCESS EXCAVATED MATERIAL FROM THE PROJECT TO REGRADE THEIR YARDS TO DRAIN TO THE NEW PAVEMENT. CONTRACTOR WILL BE REQUIRED TO DUMP AND SPREAD THE EXCESS MATERIAL AS REQUIRED BY THE SPECIFICATIONS WHEN REQUESTED BY THE PROPERTY OWNER. THE CONTRACTOR SHALL ASSERTAIN THAT A DIRT ORDER FORM HAS BEEN PROPERLY EXECUTED BY THE PROPERTY OWNER BEFORE ANY SUCH EXCESS MATERIAL IS DELIVERED TO SUCH PROPERTIES.
- THE CONTRACTOR SHALL BE RESPONSIBLE FOR PRESERVING PROPERTY IRONS. THE CONTRACTOR WILL BE REQUIRED TO RE-ESTABLISH ANY PROPERTY IRONS WHICH ARE DAMAGED OR DESTROYED BY HIS CONSTRUCTION OPERATIONS. SUCH IRONS SHALL BE RE-ESTABLISHED BY A REGISTERED LAND SURVEYOR IN ACCORDANCE WITH STATE LAWS.
- THE CONTRACTOR SHALL ADJUST WATER VALVE AND FIRE HYDRANTS AS DIRECTED BY THE ENGINEER. THE WATER DEPARTMENT SHALL FIELD LOCATE WATER VALVES ONE TIME DURING CONSTRUCTION WHEN REQUESTED BY THE CONTRACTOR. IT SHALL BE THE CONTRACTOR'S RESPONSIBILITY TO PRESERVE SUCH FIELD LOCATIONS DURING THE CONSTRUCTION PROCESS. WATER VALVES OR FIRE HYDRANTS DAMAGED DURING CONSTRUCTION SHALL BE REPAIRED BY THE CONTRACTOR AT HIS OWN EXPENSE.
- STREET SIGNS, STREET FURNITURE, ETCETERA REMOVED BY THE CONTRACTOR SHALL BE TAKEN TO THE CITY YARD FOR STORAGE.
- INSTALL NEW STANDARD MANHOLE FRAMES AND COVERS ON ALL EXISTING STORM WATER AND SANITARY SEWER MANHOLES LOCATED IN NEW PAVEMENT. OLD FRAMES AND COVERS SHALL BE TAKEN TO THE CITY YARD FOR SALVAGE.
- ALL ELEVATIONS SHOWN ARE CITY DATUM. CITY DATUM = USGS MSL - 1187.40
- ALL DISTURBED AREA WITHIN R/W SHALL BE SEEDED OR SODED WITH SAME KIND AS EXISTING.
- CONTRACTOR SHALL CONTACT UTILITIES FOR RELOCATION COMPLETION DATE PRIOR TO BIDDING.

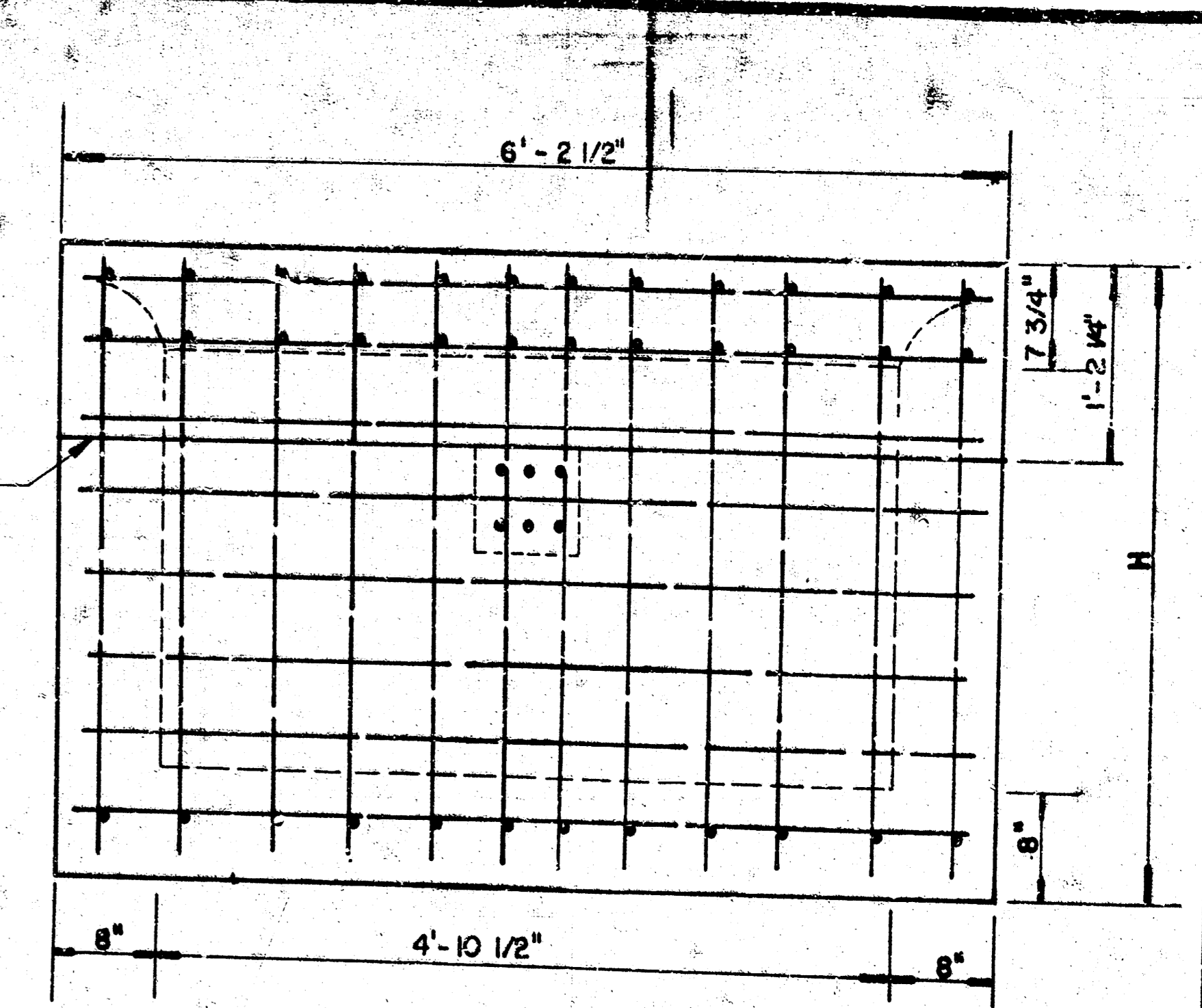
	NORTHROCK CROSSING AT COTTONWOOD SQUARE	Date: JTC Drawn by: JTC Check by: JTC Date: AUGUST 94 Scale: AS SHOWN
	GENERAL NOTES & DETAILS	Sheet: 2 of: 8
MID-KANSAS ENGINEERING CONSULTANTS INC. 3500 NORTH ROCK ROAD BUILDING #500 WICHITA, KANSAS 67226		(316) 636-5566



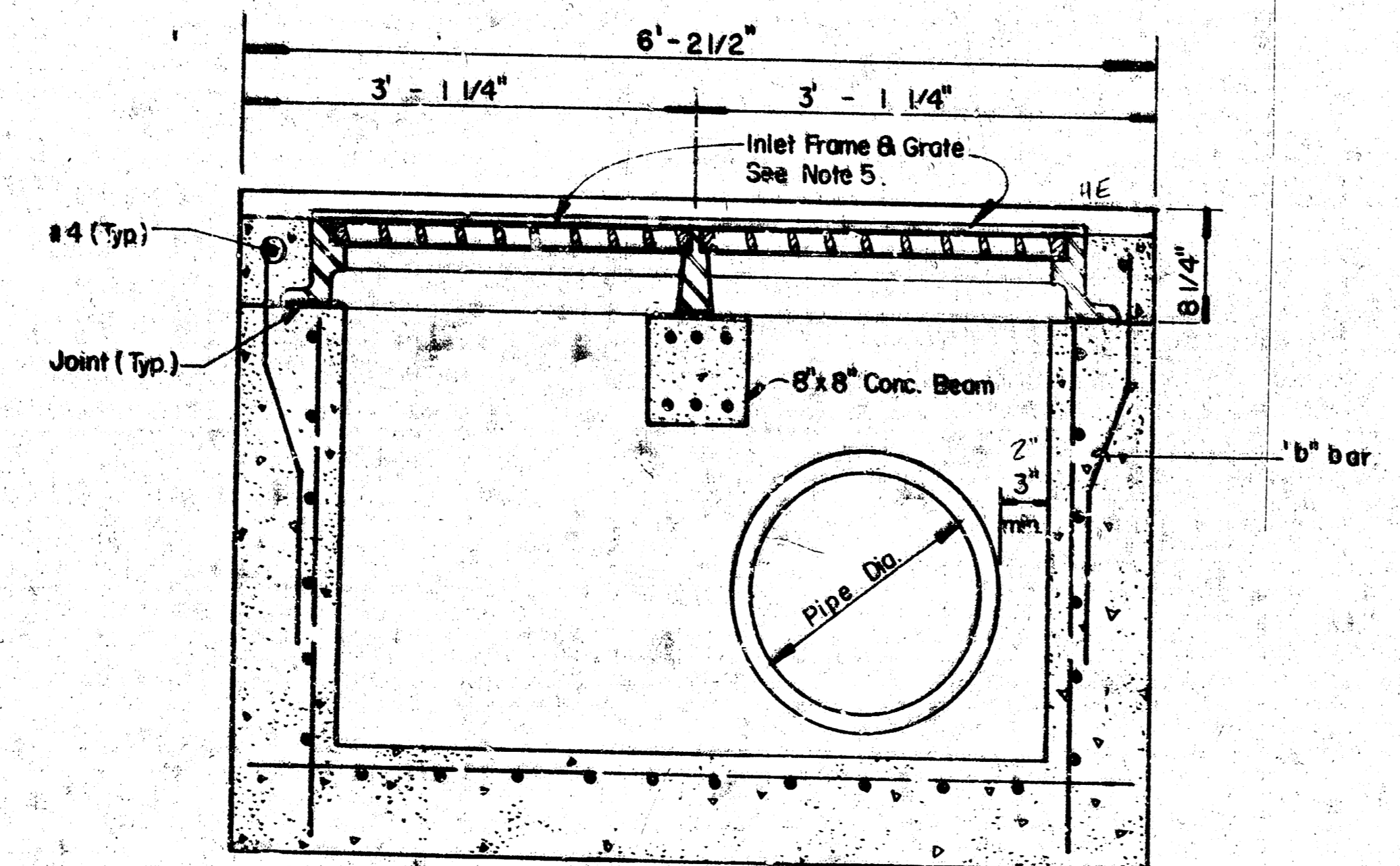
SECTION C-C



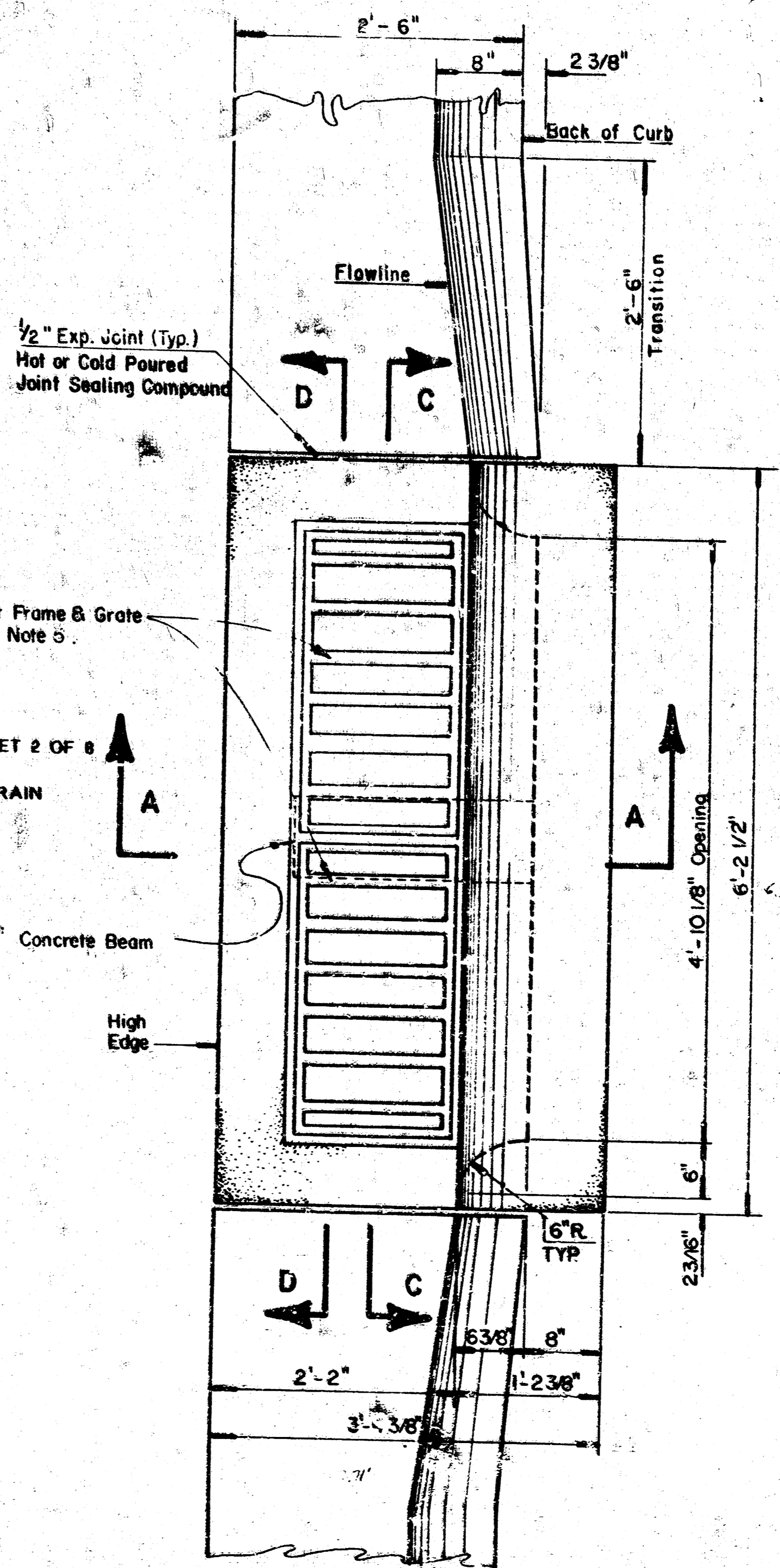
SECTION A-A



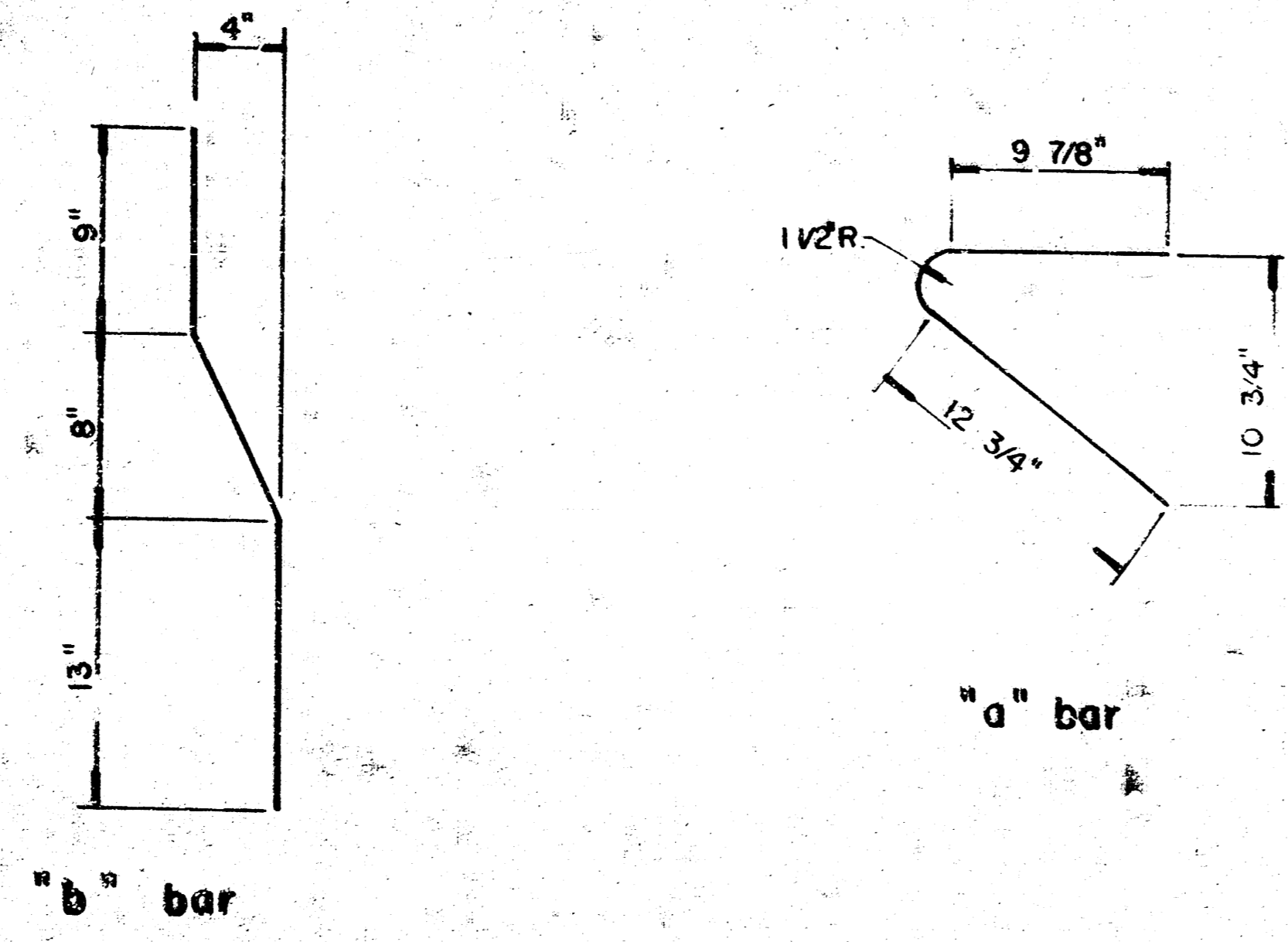
REAR WALL



SECTION D-D



SEE DETAIL SHEET 2 OF 8 FOR UNDERDRAIN DETAIL



BENDING DIAGRAM

GENERAL NOTES:

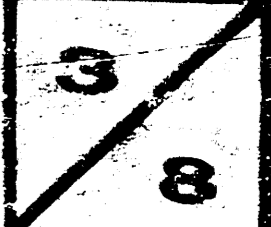
1. Use the concrete mix specified for the City of Wichita concrete pavement throughout. All exposed edges shall be finished with an edging tool. Reinforcing bars shall be bent around pipe.
2. Inlet invert shall be shaped with 8 sack mix concrete to create flow channels and to increase hydraulic efficiency such that the inlet will be self cleaning between all inlet and/or outlet pipes.
3. All bars are #4 with 6" spacing and shall have a minimum clearance of 1 1/2 inches unless otherwise noted on the plans.
4. No deductions will be made in pay length of curb, gutter, or curb and gutter through the inlet area.
5. Use Hoensch R-3288 HV Inlet Frame with two piece Grate or approved equal. Inlet frame to be proof load tested to 40,000 lbs on unsupported side.
6. Reinforcing bars shall be cut or bent around pipes. No deduction in concrete quantities shall be made for pipe openings.
7. The vanes of the grate shall be oriented to intercept flow from the direction shown by flow arrows on the plans.

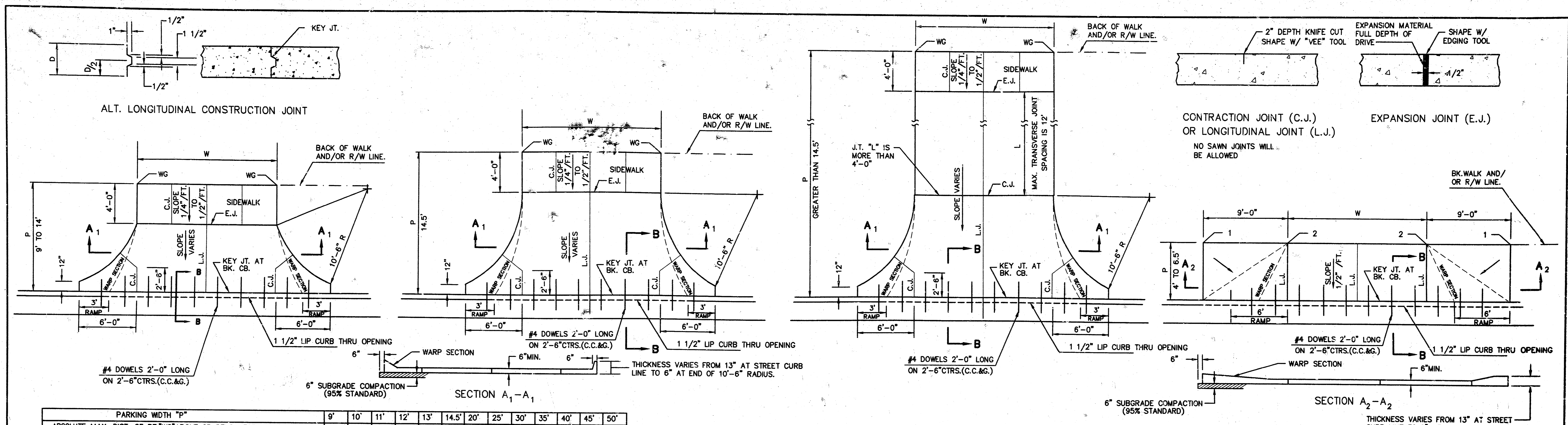
Revised: 12-7-87

WICHITA CURB

DETAIL STANDARD TYPE II CURB INLET
CITY OF WICHITA, KANSAS
INLET OPENING = 6" x 4' 3/16"

JANUARY, 1987



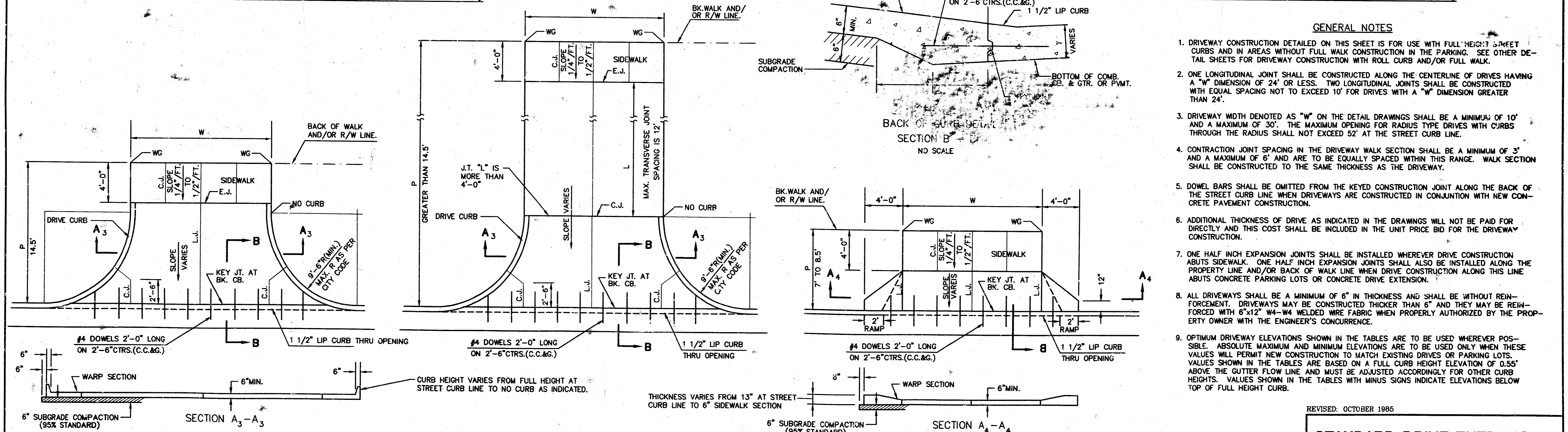


PARKING WIDTH "P"	9'	10'	11'	12'	13'	14.5'	20'	25'	30'	35'	40'	45'	50'
ABSOLUTE MAX. DIST. OF PT. "WG" ABOVE OR BELOW TOP OF FULL CB.	0.35'	0.35'	0.40'	0.45'	0.60'	0.80'	1.35'	1.85'	2.35'	2.85'	3.35'	3.85'	4.35'
OPTIMUM MAX. DIST. OF PT. "WG" ABOVE OR BELOW TOP OF FULL CB.	0.35'	0.35'	0.40'	0.45'	0.60'	0.70'	1.04'	1.30'	1.56'	1.82'	2.08'	2.34'	2.60'
OPTIMUM MIN. DIST. OF PT. "WG" ABOVE OR BELOW TOP OF FULL CB.	0.19'	0.21'	0.23'	0.25'	0.27'	0.30'	0.42'	0.52'	0.62'	0.72'	0.82'	0.92'	1.02'
ABSOLUTE MIN. DIST. OF PT. "WG" ABOVE OR BELOW TOP OF FULL CB.	-0.12'	-0.16'	-0.13'	-0.10'	-0.06'	0.00'	0.00'	0.15'	0.25'	0.35'	0.45'	0.55'	0.65'

PARKING WIDTH "P"	4'	4.5'	5'	5.5'	6'	6.5'
DIST. OF PT. "1" ABOVE TOP OF FULL CB.	0.08'	0.09'	0.10'	0.12'	0.13'	0.14'
DIST. OF PT. "2" BELOW TOP OF FULL CB.	-0.26'	-0.24'	-0.22'	-0.20'	-0.18'	-0.16'

RADIUS RAMP DRIVES (P=9.0' & GREATER)

RADIUS RAMP DRIVE (P=4.0' TO 6.5')



PARKING WIDTH "P"	14.5'	20'	25'	30'	35'	40'	45'	50'
ABSOLUTE MAX. DIST. OF PT. "WG" ABOVE TOP OF FULL CB.	0.80'	1.35'	1.85'	2.35'	2.85'	3.35'	3.85'	4.35'
OPTIMUM MAX. DIST. OF PT. "WG" ABOVE TOP OF FULL CB.	0.70'	1.04'	1.30'	1.56'	1.82'	2.08'	2.34'	2.60'
OPTIMUM MIN. DIST. OF PT. "WG" BELOW TOP OF FULL CB.	0.30'	0.42'	0.52'	0.62'	0.72'	0.82'	0.92'	1.02'
ABSOLUTE MIN. DIST. OF PT. "WG" BELOW TOP OF FULL CB.	0.00'	0.00'	0.15'	0.25'	0.35'	0.45'	0.55'	0.65'

PARKING WIDTH "P"	7'	7.5'	8'	8.5'
ABSOLUTE MAX. DIST. OF PT. "WG" ABOVE TOP OF FULL CB.	0.00'	0.10'	0.20'	0.30'
OPTIMUM MAX. DIST. OF PT. "WG" ABOVE TOP OF FULL CB.	0.00'	0.10'	0.20'	0.30'
OPTIMUM MIN. DIST. OF PT. "WG" ABOVE TOP OF FULL CB.	-0.15'	-0.16'	-0.17'	-0.17'
ABSOLUTE MIN. DIST. OF PT. "WG" ABOVE TOP OF FULL CB.	-0.25'	-0.20'	-0.20'	-0.20'

FULL RADIUS DRIVES (P=14.5' & GREATER)

FULL RAMP DRIVE (P=7.0' TO 8.5')

REVISED: OCTOBER 1985

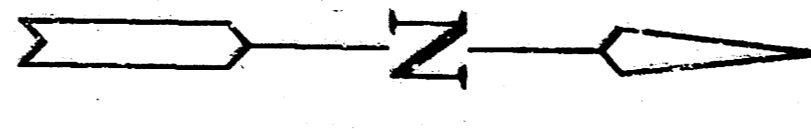
**STANDARD DRIVE ENTRANCES
FULL HEIGHT CURB**

SCALE: 1"=5'

CITY OF WICHITA, KANSAS

Design	Checked by	Checked by	SHRETT	4
Drawn by	Date	Date	AUG/94	8

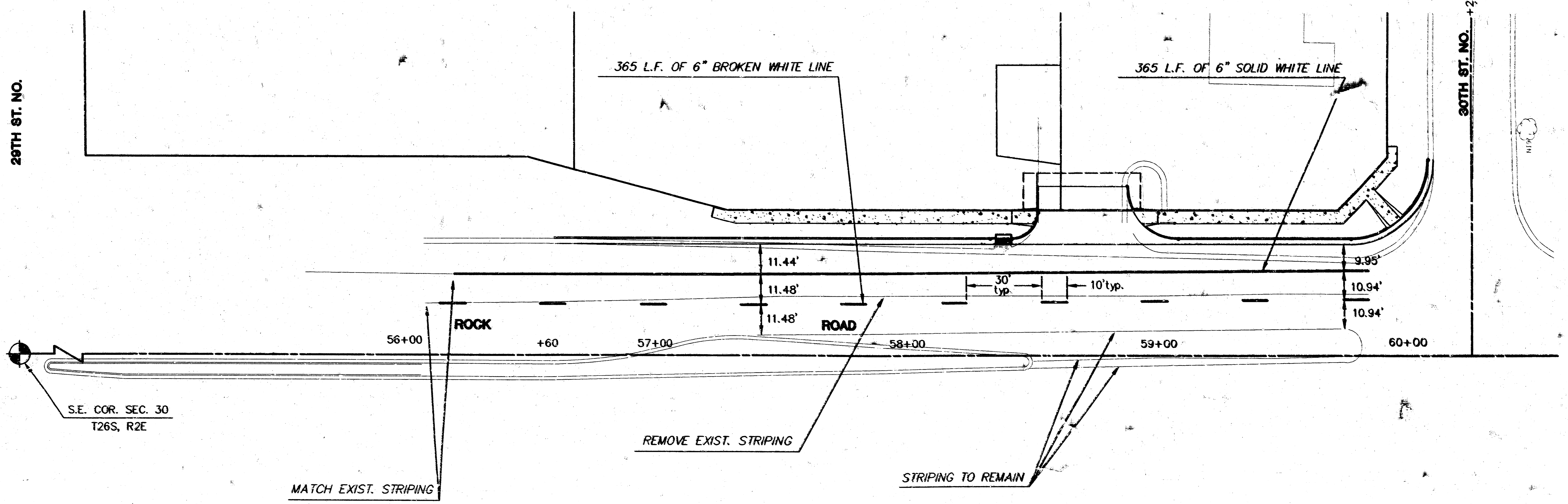
DRV01L



Scale: 1"=20'

28TH ST. NO.

30TH ST. NO. +25.53



S.E. COR. SEC. 30
T26S, R2E

MATCH EXIST. STRIPING

REMOVE EXIST. STRIPING

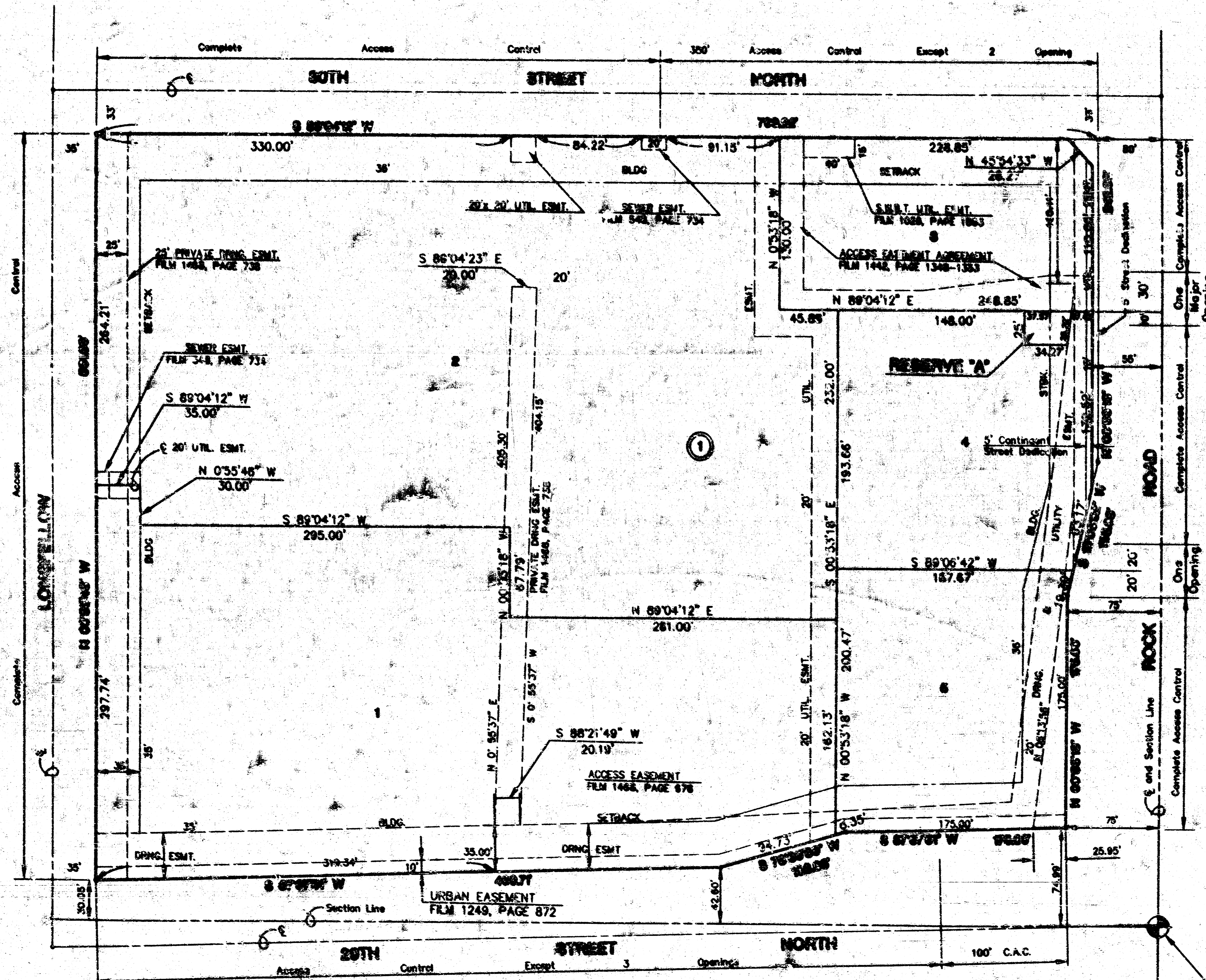
STRIPING TO REMAIN

	NORTHROCK CROSSING AT COTTONWOOD SQUARE	Drawn by GJA
	STRIPING PLAN	Checked by KRL
MID-KANSAS ENGINEERING CONSULTANTS INC. 3500 NORTH ROCK ROAD BUILDING #800 WICHITA, KANSAS 67226		Date 7/94
(316) 636-5566		Job no. 94069-113-E
		Sheet 6
		Total 8

18-CITY-Subdivided-Map-3111-1-11-93-21-41-1794

FINAL PLAN OF
NORTHROCK CROSSING

AN ADDITION TO TOWN OF WINDSOR, SEBASTIAN COUNTY, MISSOURI



SCALE: 1"=80'
 • IRON PIN
 SUBJECT TO
 C.U.P. 0P-100

S.E. COR. SEC. 31
 T 28 S. R 2 E

MISSOURI SURVEYORS BOARD A 7th Aug 25 10 10 01 1894

8758

