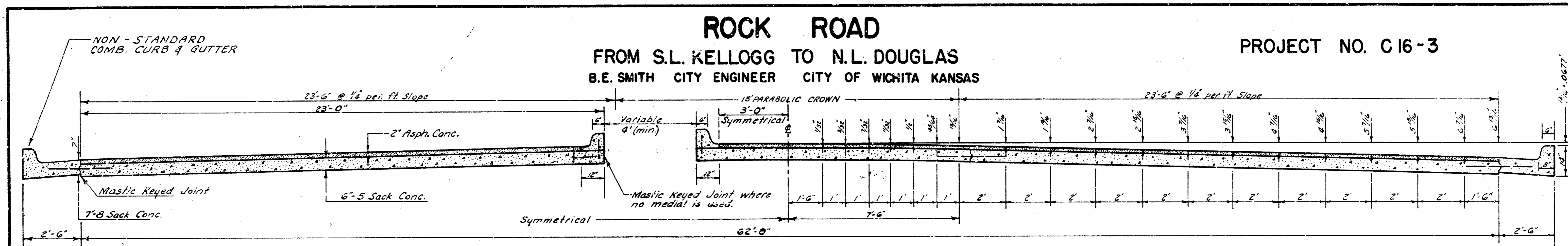


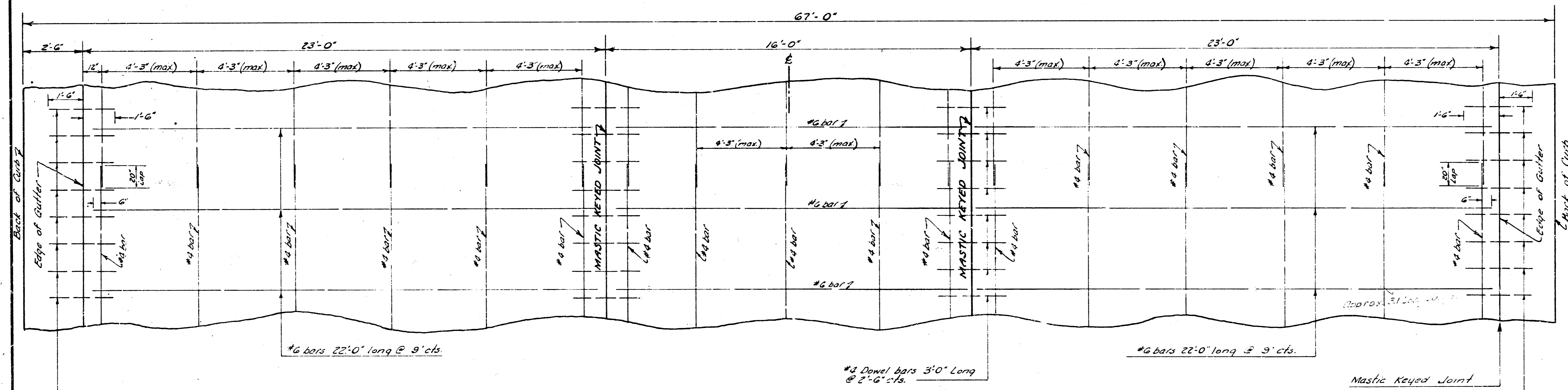
ROCK ROAD

FROM S.L. KELLOGG TO N.L. DOUGLAS
 B.E. SMITH CITY ENGINEER CITY OF WICHITA KANSAS

PROJECT NO. C16-3

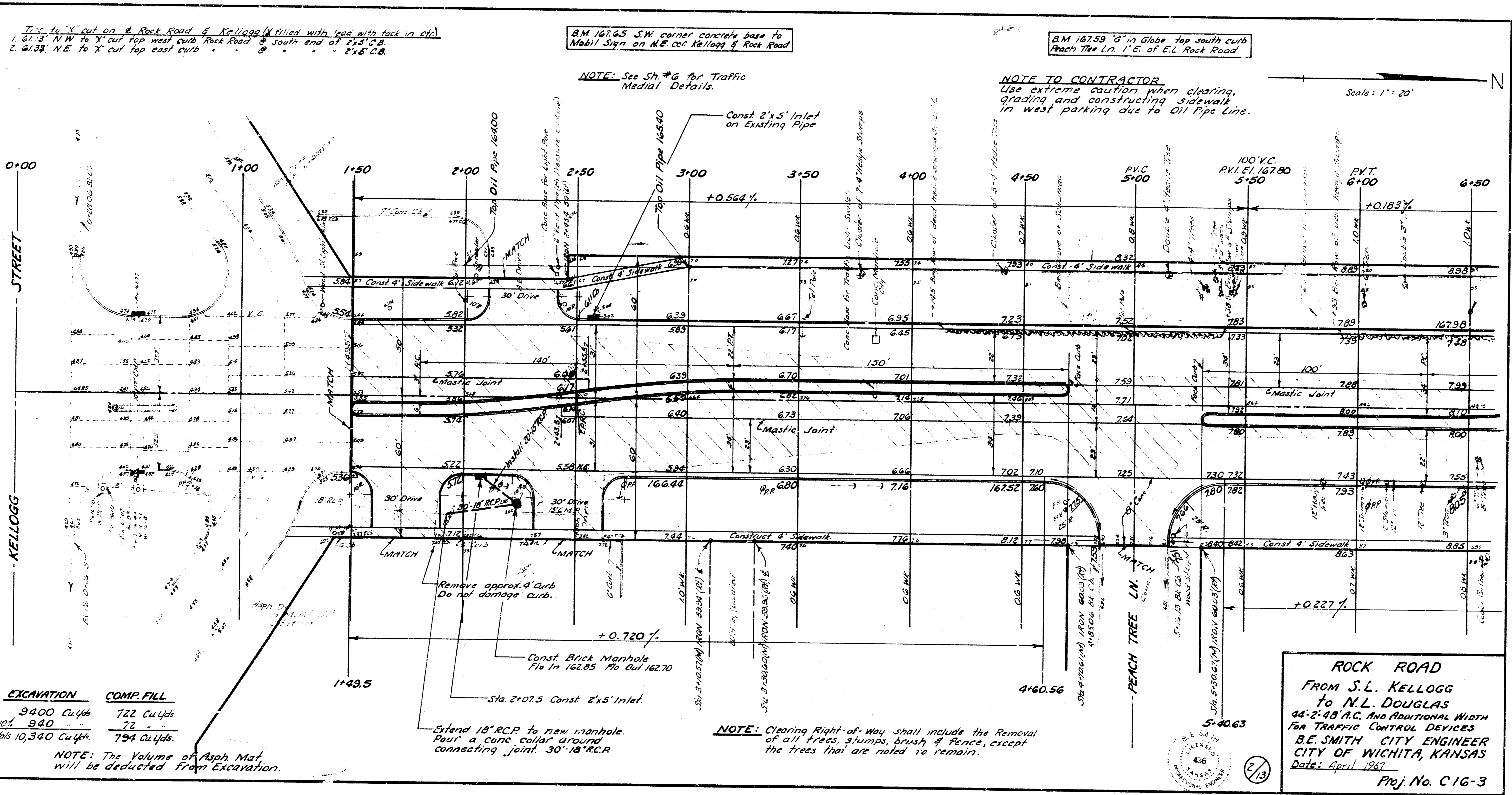


TYPICAL SECTION
 NOT TO SCALE



STEEL PATTERN
 NOT TO SCALE





1. 61.13' N.W. to 'X' cut top west curb Rock Road @ south end of 2'x5' C.B.
 2. 61.33' N.E. to 'X' cut top east curb @ 2'x5' C.B.

B.M. 161.65 S.W. corner concrete base to Mobil Sign on N.E. cor Kellogg & Rock Road

B.M. 167.59 6" in Globe top south curb Peach Tree Ln. 1' E. of E.L. Rock Road

NOTE: See Sh #6 for Traffic Medial Details.

NOTE TO CONTRACTOR
 Use extreme caution when clearing, grading and constructing sidewalk in west parking due to Oil Pipe Line.

Scale: 1" = 20'

EXCAVATION	COMP. FILL
9400 Cu Yds	722 Cu Yds
+10% 940	72
Totals 10,340 Cu Yds	794 Cu Yds

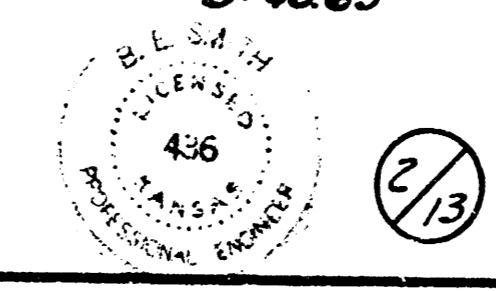
NOTE: The Volume of Asph. Mat. will be deducted from Excavation.

Const Brick Manhole
 Fl In 162.85 To Out 162.70

Sta 2+07.5 Const 2'x5' Inlet.
 Extend 18" R.C.P. to new manhole. Put a conc. collar around connecting joint. 30" 18" R.C.P.

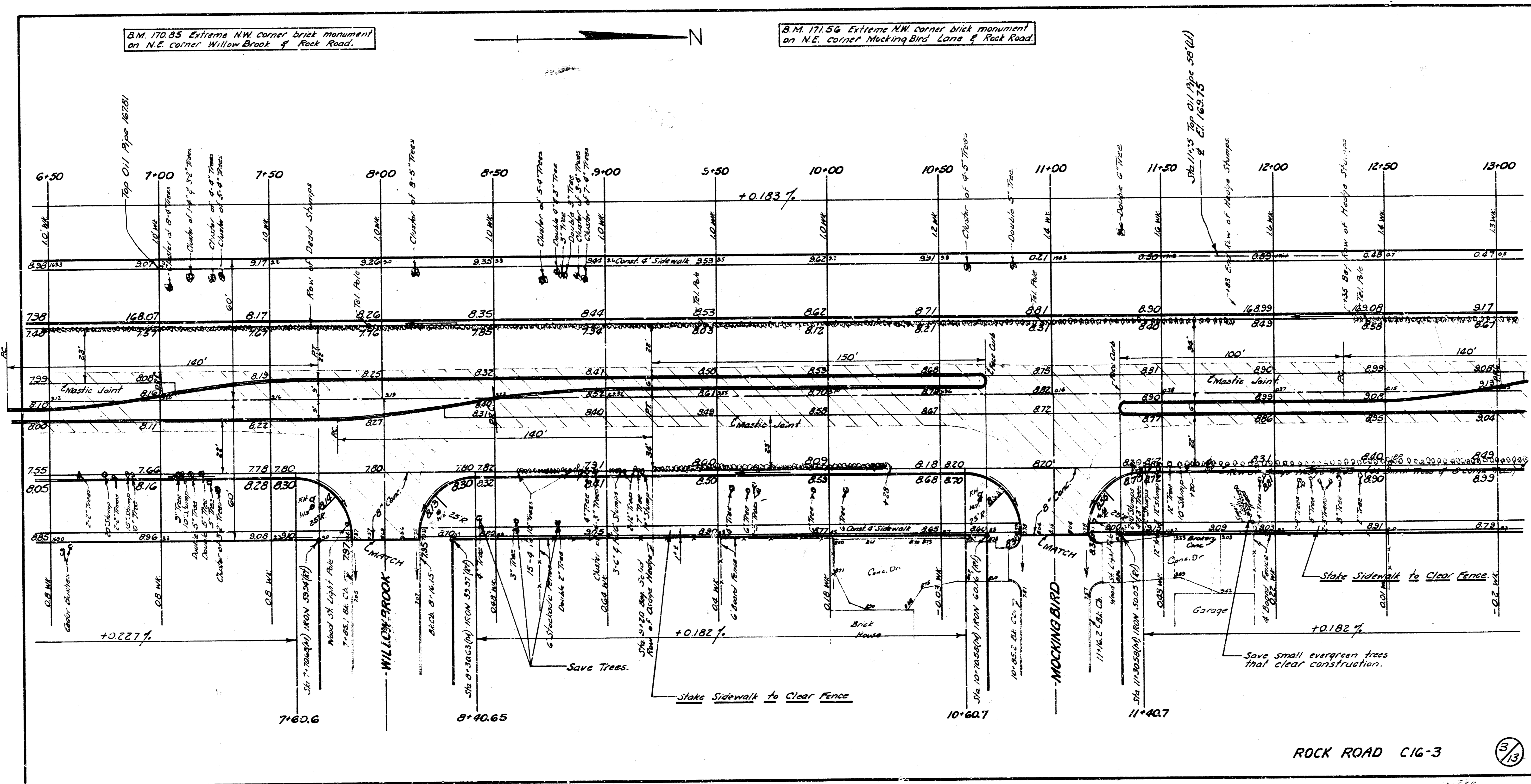
NOTE: Clearing Right-of-Way shall include the Removal of all trees, stumps, brush & fence, except the trees that are noted to remain.

ROCK ROAD
 FROM S.L. KELLOGG
 TO N.L. DOUGLAS
 44'-2'-48" A.C. AND ADDITIONAL WIDTH
 FOR TRAFFIC CONTROL DEVICES
 B.E. SMITH CITY ENGINEER
 CITY OF WICHITA, KANSAS
 Date: April 1967
 Proj. No. C-16-3



B.M. 170.85 Extreme NW corner brick monument on N.E. corner Willow Brook & Rock Road.

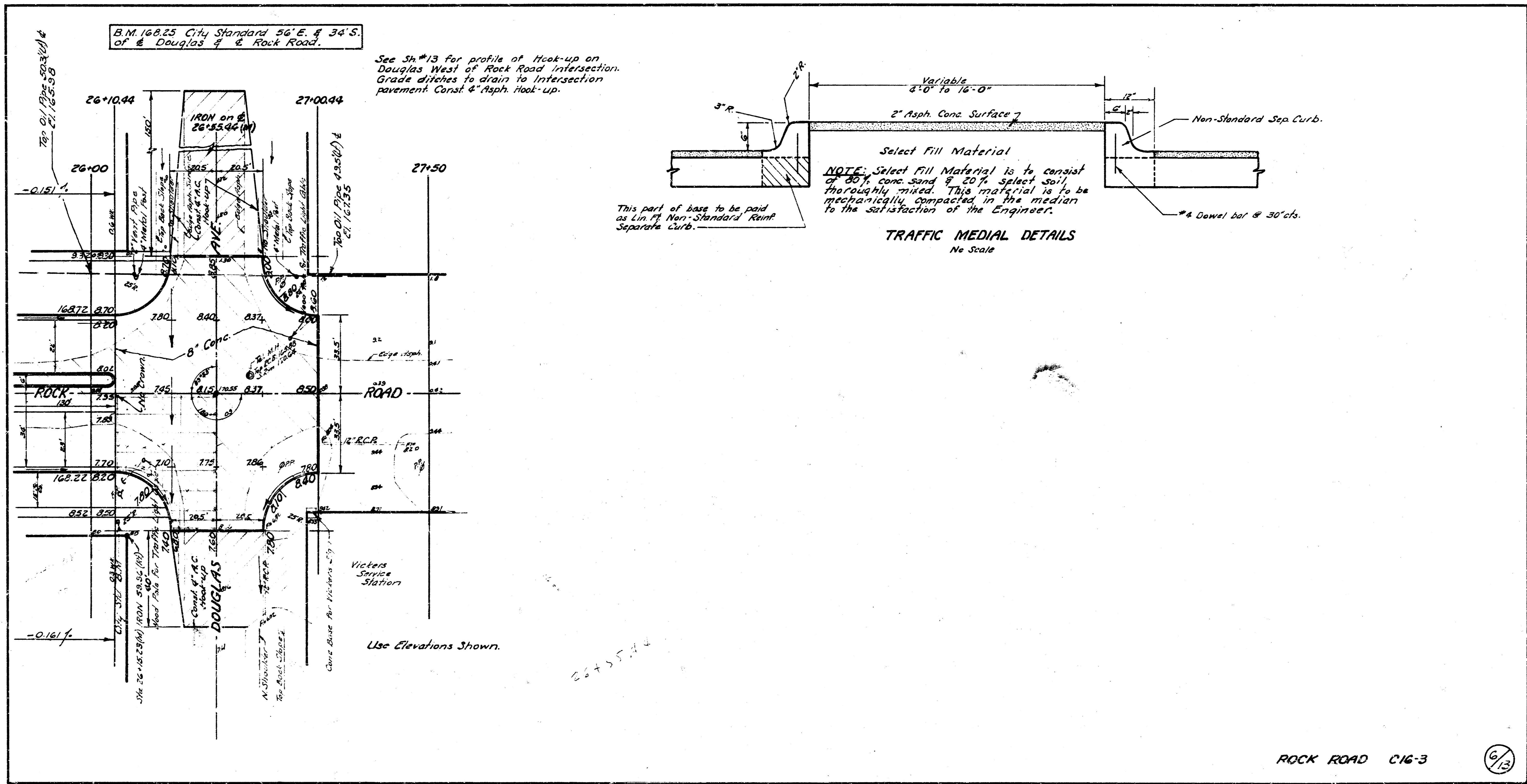
B.M. 171.56 Extreme NW corner brick monument on N.E. corner Mocking Bird Lane & Rock Road.



ROCK ROAD C16-3

3/13

12-5-79
1-25-81



B.M. 168.25 City Standard 56' E. & 34' S. of Douglas & Rock Road.

See Sh. #13 for profile of Hook-up on Douglas West of Rock Road Intersection. Grade ditches to drain to Intersection pavement. Const. 4" Asph. Hook-up.

This part of base to be paid as Lin. Ft. Non-Standard Reinf. Separate Curb.

NOTE: Select Fill Material is to consist of 80% conc. sand & 20% select soil, thoroughly mixed. This material is to be mechanically compacted in the median to the satisfaction of the Engineer.

TRAFFIC MEDIAL DETAILS
No Scale

Use Elevations Shown.