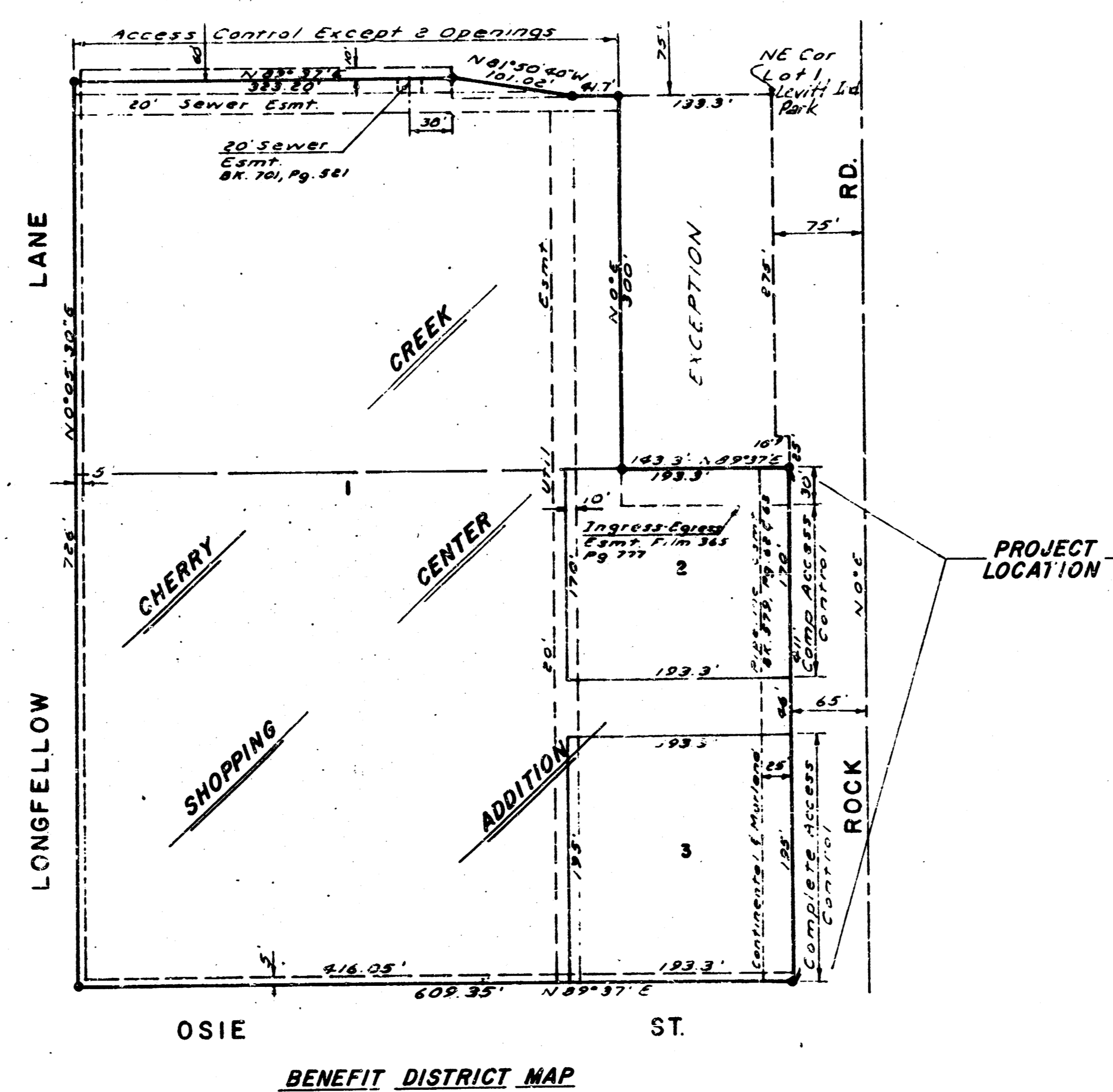
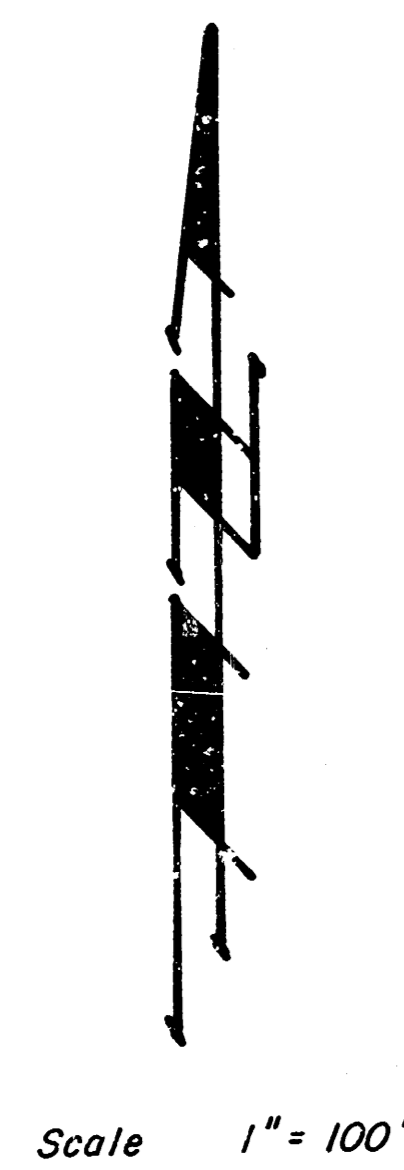


ROCK ROAD ACCEL-DECEL LANE
 N.L. OSIE TO N.L. LOT 2, CHERRY CREEK SHOPPING CENTER ADDITION

PROJECT NO. _____
472-76-245-80879-000-000-001

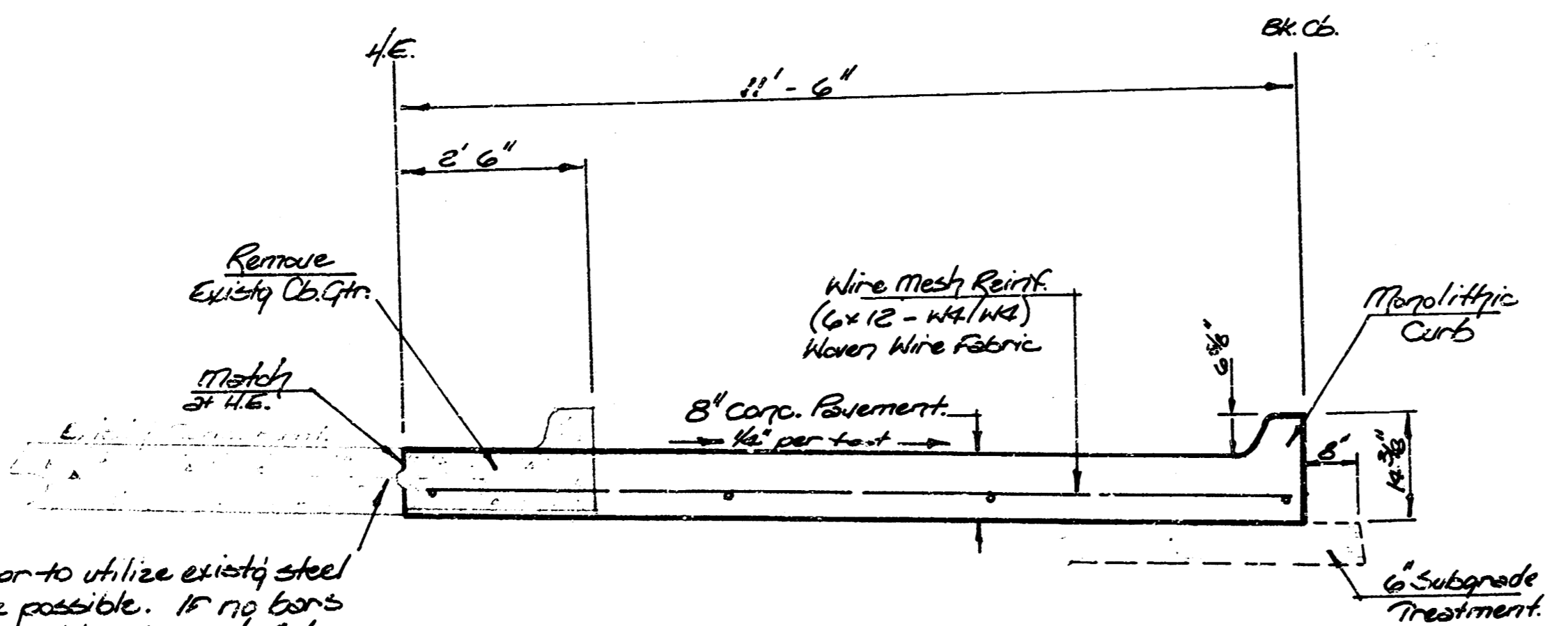
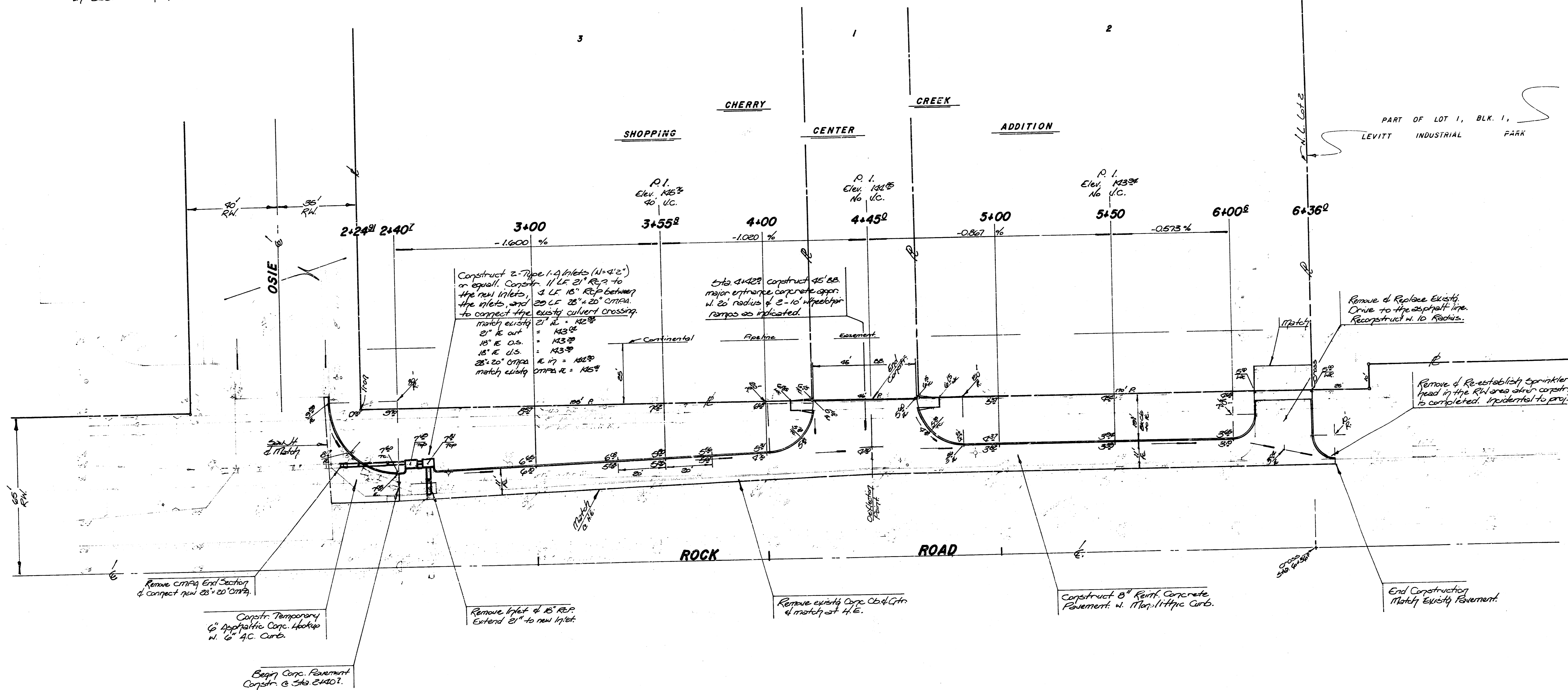


Note -
~~Contractor is to contact the utility companies and the Continental Pipeline Company prior to any construction, for verification of depth and location.~~
 Contractor is to contact the utility companies and the Continental Pipeline Company prior to any construction, for verification of depth and location.



CITY OF WICHITA, KS.
 MIKE LINDEBAK ——— CITY ENGINEER

B.M. 142.85 City Std. Disc. Approx. 200' East of Harry & Rock Road
 N.E. corner R.C.B.C. Wiring Wall.
 B.M. 144.78 R.R. Spk. W. Fe. of 2nd RR South of Harry
 on East side Rock Road.



Note -
 Type 8" concrete pavement shall be reinforced with wire mesh (12' x 12' w/14# woven wire fabric). All reinforcement steel of the No. 4 drilled & grouted bars shall be considered as incidental to the 8" conc. pavement. The asphaltic concrete curbing to be constructed at the hookup location shall be considered as incidental to the 6" asphaltic concrete hookup material. The new pavement joints shall match the existing joints in the concrete on Rock Road.

- Symbols -
- G — Indicates gas line
 - W — Indicates water line
 - O — Indicates crude oil line
 - T — Indicates bell line
 - indicates removal of pavement, ob-gr., depth, or driveway

Contractor to utilize existing steel tie bars where possible. If no bars exist or are undesirable, then No. 4 bars (3' lengths at 2' centers) shall be drilled and grouted into existing conc. pavement. The 1" bars, drilling, and grouting shall be considered as incidental to 8" conc. pavement.

REVISIONS 11/13

ROCK ROAD ACCEL-DECEL LANE
 N. L. OSIE TO N. L. LOT 2, CHERRY CREEK SHOPPING CENTER ADDITION.
 CITY OF WICHITA, KS.
 PROJ. NO. 472-76-245-80879-000-000-001

BAUGHMAN COMPANY, P.A.
 SURVEYING & ENGINEERING
 316/262-7271 • 330 LAURA • WICHITA, KANSAS 67211

