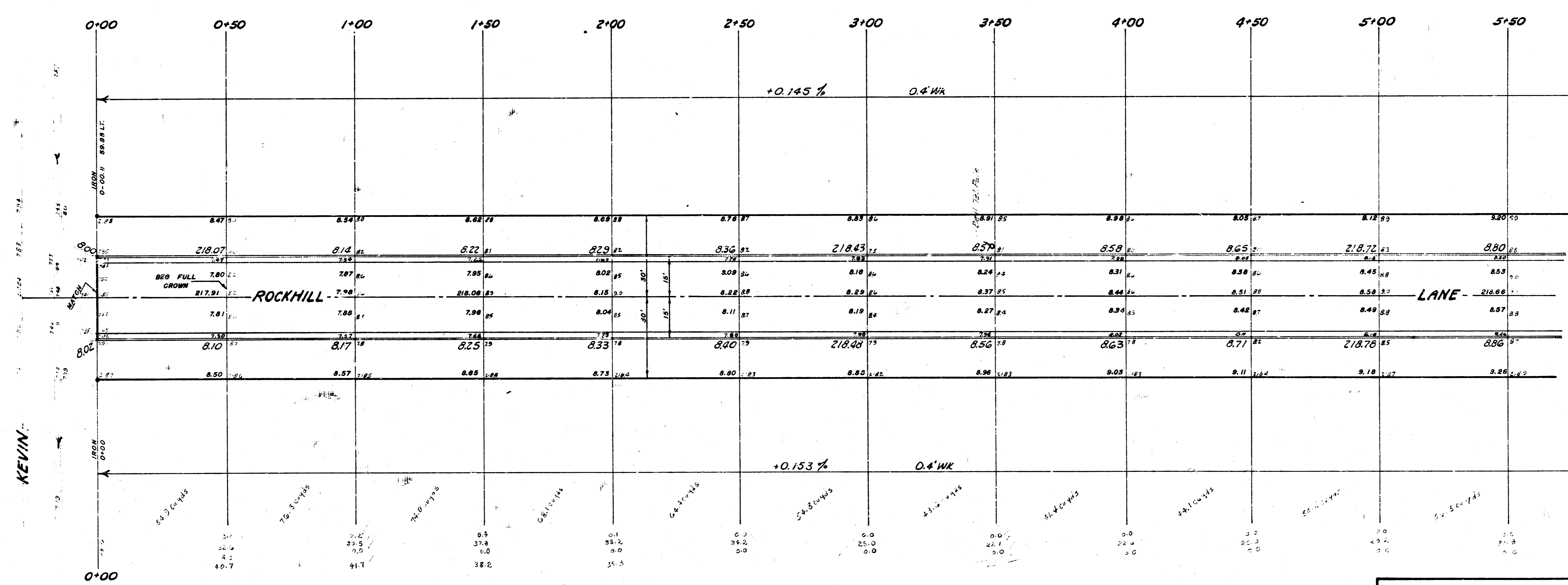
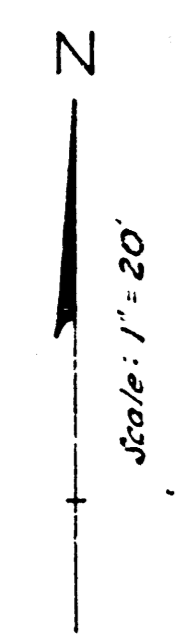


B.M. 221.20 N.E. corner conc step House #1809 Kevin
 B.M. 221.99 N. Cor conc porch Ho# 5721 Chadowes on SW. Cor Charlotte & Chadowes.
 B.M. 223.18 S.W. Cor conc step Ho# 1826 Charlotte.
 Base Line is on the South Property Line.

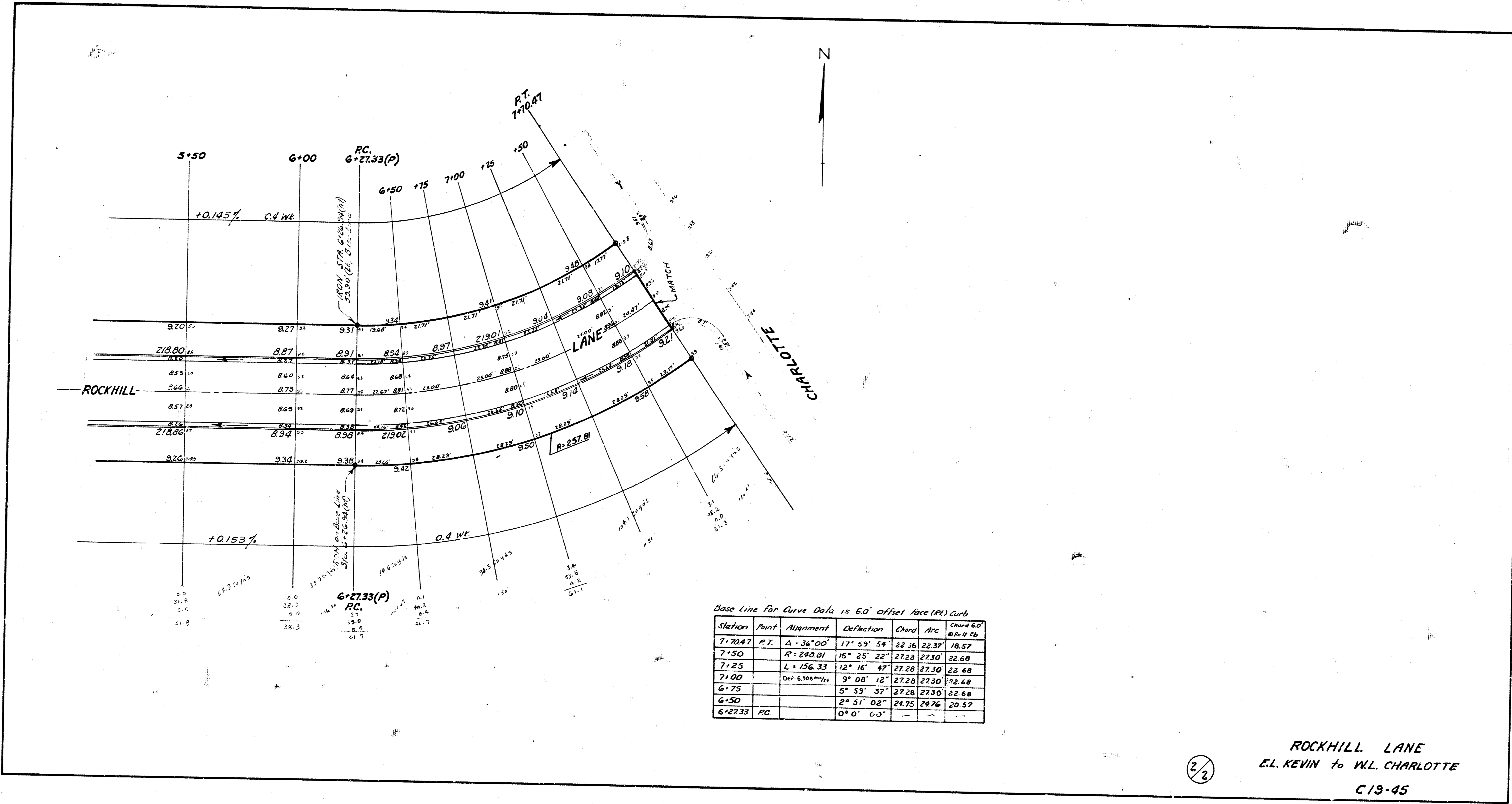


EXCAVATION
 Property
 992.6 cu yds
 +10% 99.3 " "
 Total 1091.9 cu yds



ROCKHILL LANE
 From E.L. Kevin to
 W.L. Charlotte
 26-2-30 Asph. Conc.
 B.E. SMITH CITY ENGINEER
 CITY OF WICHITA, KANSAS
 1945 Project No. C19-45

SEE PLAN SHEET
 C19-45



Base Line for Curve Data is 6.0' offset face (PI) curb

Station	Point	Alignment	Deflection	Chord	Arc	Chord 6.0' offset face
7+20.47	P.T.	$\Delta = 36^{\circ}00'$	$17^{\circ}59'54''$	22.36	22.37	18.57
7+50		$R = 240.01'$	$15^{\circ}25'22''$	27.28	27.30	22.68
7+25		$L = 156.33'$	$12^{\circ}16'47''$	27.28	27.30	22.68
7+00		$Def = 6.308^{\circ}/100'$	$9^{\circ}08'12''$	27.28	27.30	22.68
6+75			$5^{\circ}59'37''$	27.28	27.30	22.68
6+50			$2^{\circ}51'02''$	24.75	24.76	20.57
6+27.33	RC		$0^{\circ}0'00''$	-	-	-

ROCKHILL LANE
 E.L. KEVIN to W.L. CHARLOTTE
 C19-45