

Note: ~ Use only B.M.s shown because B.M.s East of Brookside & North of 2nd are 0.3' high relative to surrounding B.M.s.  
 B.M. 172.93 is 1949 Top cb. W. and radius N.W. corner of W. Brookside Parkway, & Rockwood.

Note: Stationing is on S' offset from S. R.

1/3

Intersections-Oakwood 2<sup>nd</sup>  
 Proj. # C 12-73  
**Rockwood Road**  
 E.L. Brookside to W.L. Hillcrest  
 30' conc. & cb.  
 City of Wichita, Kansas  
 L. K. White ~ City Engineer  
 May 1950 Private Job.

Brookside

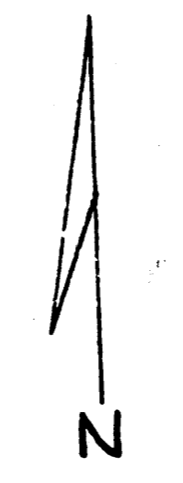
Parkway

Rockwood

Road

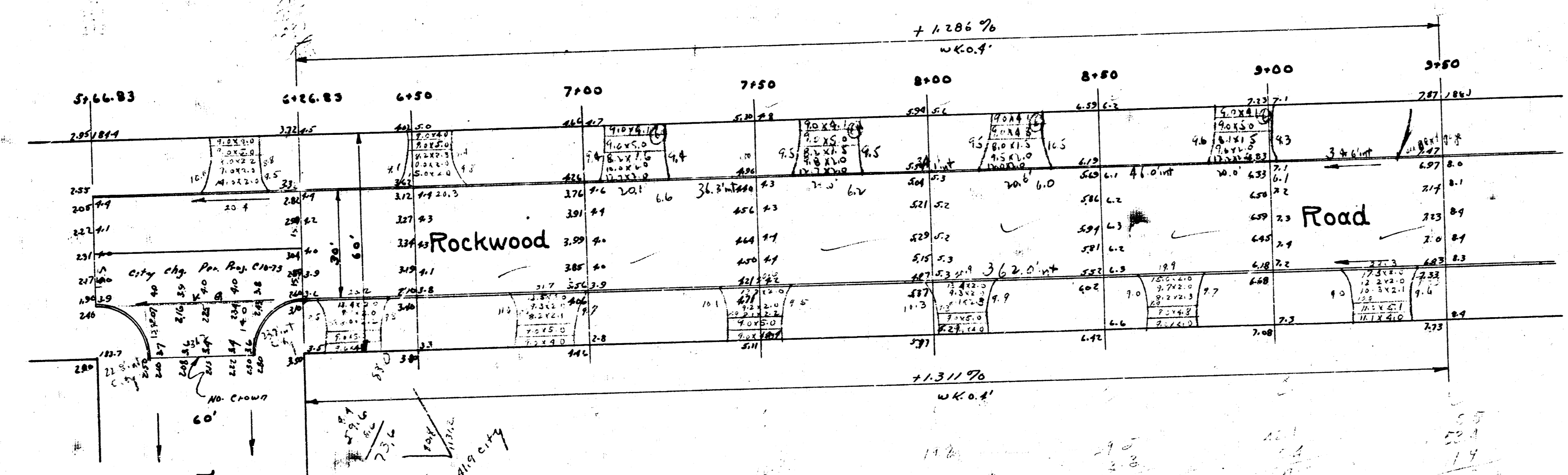
Highland Road

Be 47

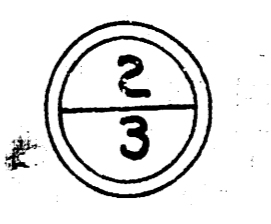


B.M. 172.93 4" in 1949 top ch W and radius  
N.W. corner Rockwood & W Brookside Parkway.  
Notes: Use only B.M.s shown because B.M.s East  
of Brookside & North of 2nd are 0.3' high  
relative to surrounding B.M.s.

City  
for Proj C-10-73  
9.7  
5.2  
110.7  
110.90  
121.1 cu yds

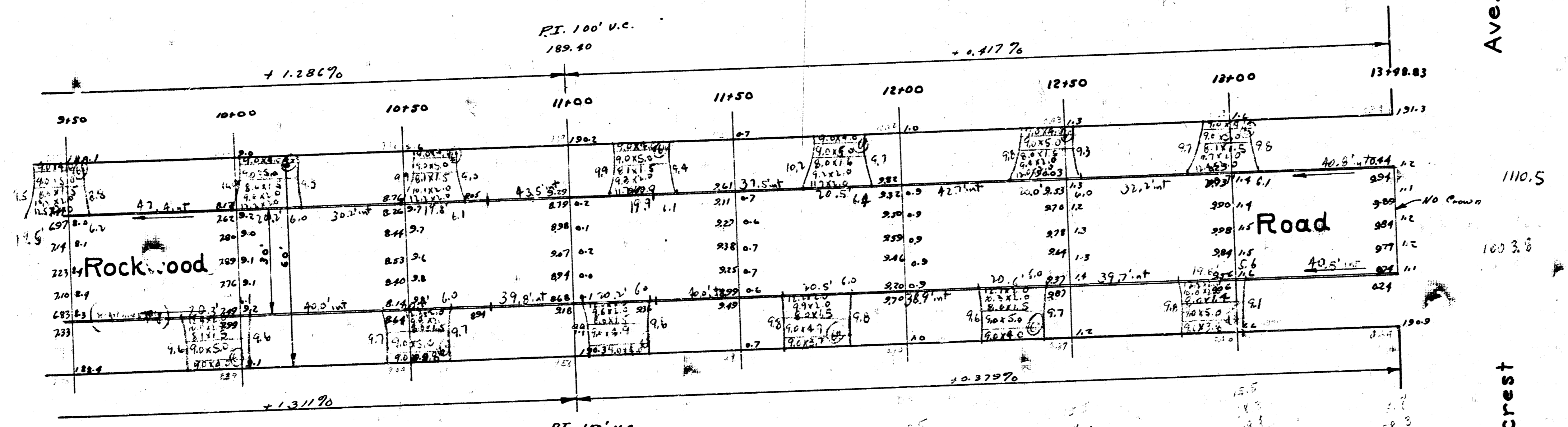


Highland Road  
62.0 City



B.M. 172.93 7' in 1949 top cb. W end radius  
N.W. corner Rockwood f N. Brookside Parkway.

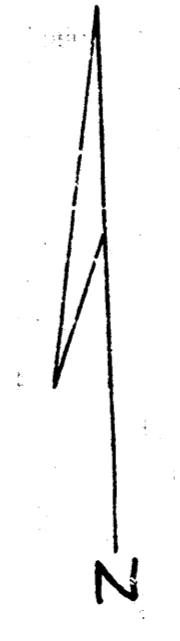
Note: Use only B.M.s shown because B.M.s  
east of Brookside f north of 2<sup>nd</sup> are  
6.3' high relative to surrounding B.M.s.



Ave.

110.5  
1603.8

Hillcrest



3  
3

4 2 3 15