

B.M. 207.63 "T" In Tray Fire Hydr. S.S. 17th @ Roosevelt  
 B.M. 213.52 S.W. Cor. Conc. Step Ho #1858 N. Roosevelt

NOTE: CHAIN N. ON E

0-18 8" TRAMP 71 EX  
 0-5 2-3 TRAMP 101 EX  
 0-105 12" TRAMP 67 EX  
 0-15 3-0 TRAMP 87 EX  
 0-112 2" CONC. CH. 107 EX

0-149 12" TRAMP 21 EX  
 0-15 12" TRAMP 71 EX  
 0-170 8" TRAMP 71 EX

1-08 24" TRAMP 81 EX  
 1-15 2-0 TRAMP 81 EX  
 1-15 2-0 TRAMP 81 EX  
 1-15 2-0 TRAMP 81 EX  
 1-15 2-0 TRAMP 81 EX

2-00 6" CONC. CH. 107 EX  
 2-00 6" TRAMP 81 EX

2-100 6" CONC. CH. 107 EX  
 2-100 6" TRAMP 81 EX

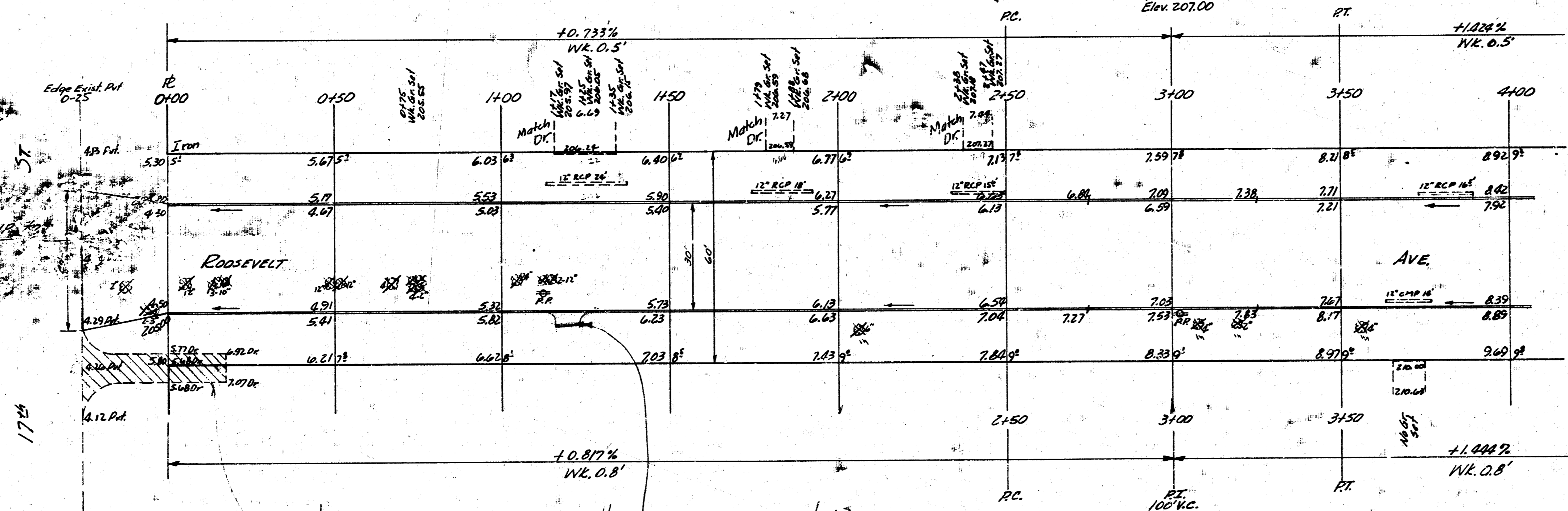
3-102 12" TRAMP 21 EX  
 3-107 8" TRAMP 101 EX  
 3-119 8" TRAMP 101 EX

3-112 8" TRAMP 201 EX  
 3-119 8" CONC. CH. 107 EX  
 3-119 8" CONC. CH. 107 EX

Grand Total Excau

Prop.	214
1826.8	287
4102.132.7	27
Total 2007.3 cu yds.	Total 316 cu yds.

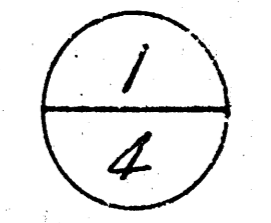
Survey A.C.C.  
 B.M. 213  
 Exam. A.C.C.  
 Checked



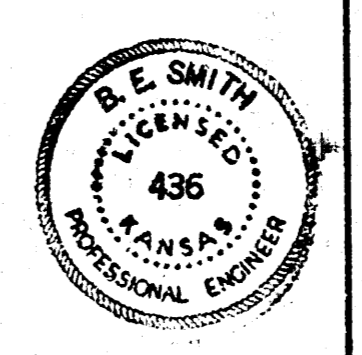
Note  
 Contact The Dennis at 1320 N Roosevelt  
 they want some of broken concrete  
 KZ

Note  
 Dated?  
 A 10' Lug to be built at  
 Location picked by Dunes Dunn  
 at 1320 N Roosevelt  
 JHE

July 13 Owner called of  
 now wants all of approach  
 JHE



Roosevelt Ave.  
 N.L. 17th To S.L. 18th  
 30% CONC. & CB  
 CITY OF WICHITA, KANSAS  
 B.E. SMITH CITY ENGINEER  
 MAY 1954 PROJ. No. C14-103

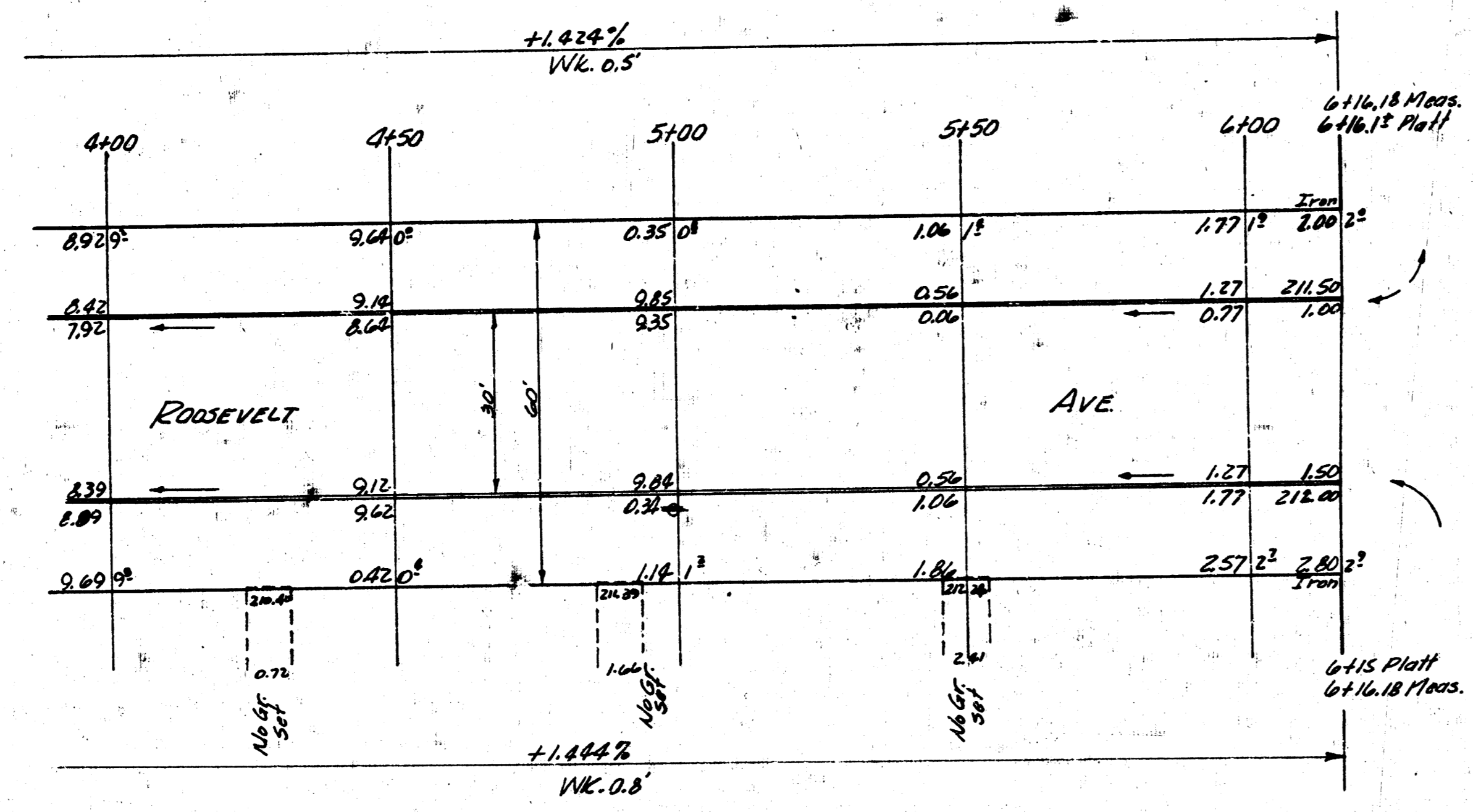




4120 8' 0" Conn. Dr. 30' 1/2" Driveway

4100 8' 0" Conn. Dr. 30' 1/2" Driveway  
4100 AP 101' 0"

5100 8' 0" Conn. Dr. 30' 1/2" Driveway



18' 0" 57