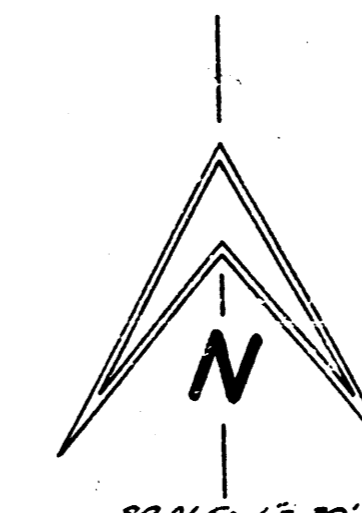


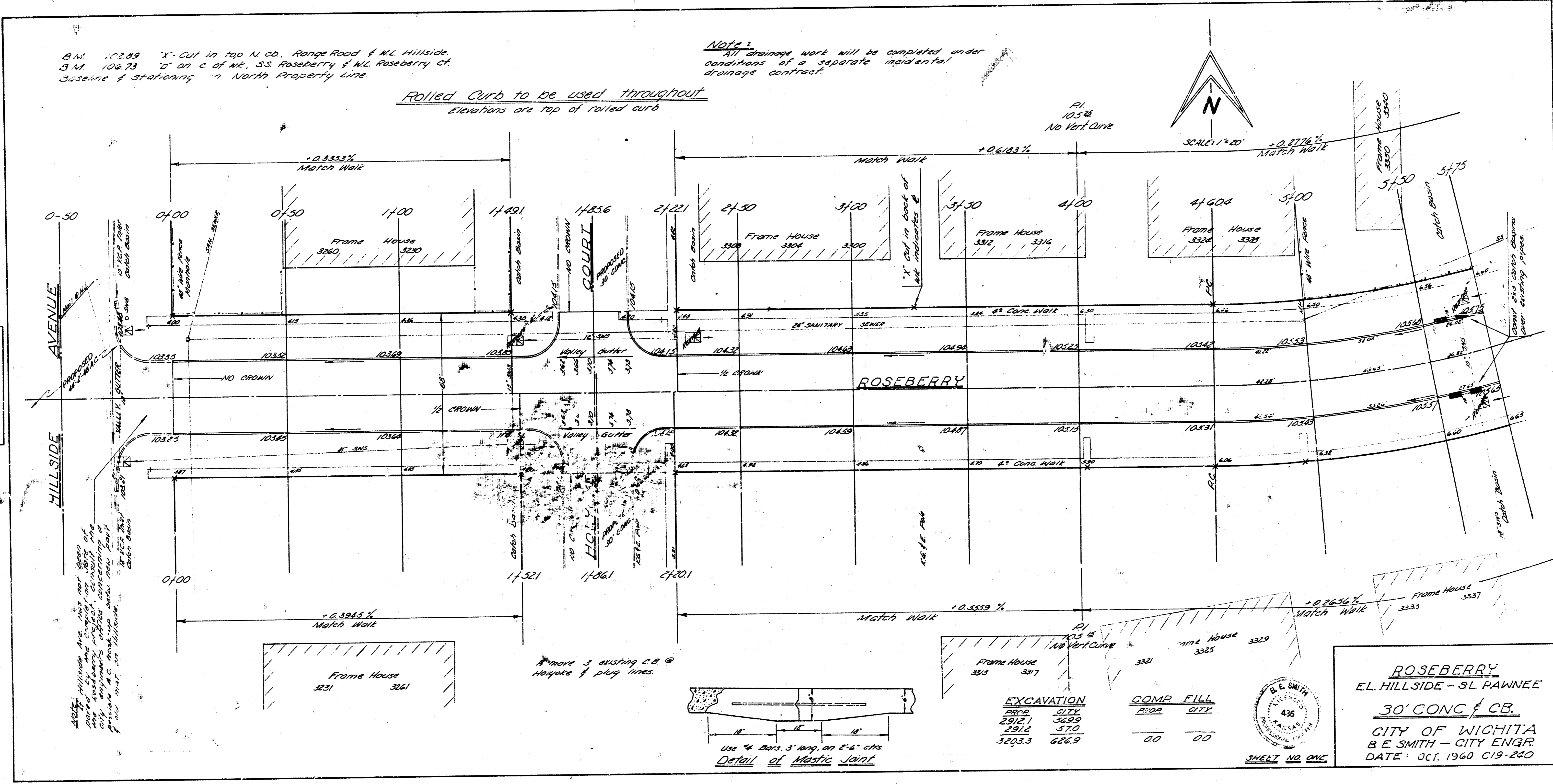
B.M. 10289 "X" Cut in 100 N. Co. Range Road of N.L. Hillside.  
 B.M. 10675 "D" on c of W.E. S.S. Roseberry of N.L. Roseberry Ct.  
 Baseline & stationing on North Property Line.

**Note:**  
 All drainage work will be completed under  
 conditions of a separate incidental  
 drainage contract.

Rolled Curb to be used throughout  
 Elevations are top of rolled curb

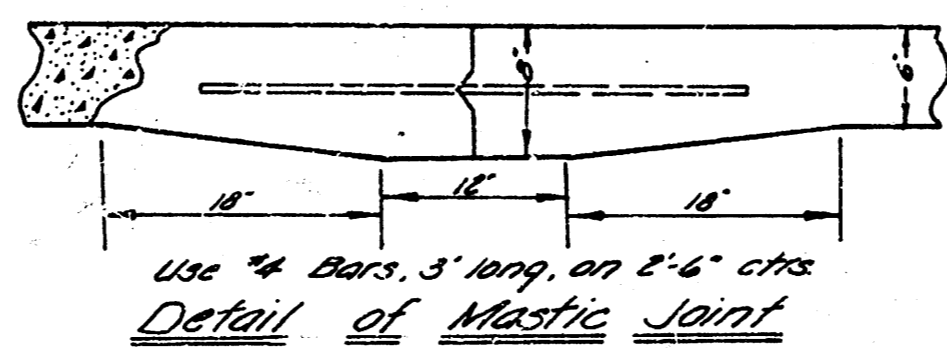


SCALE: 1" = 20'



Curb to be used  
 as shown

44277 Hillside at 100 N. Co. Range Road  
 curb and concrete on both  
 sides of street. Existing curb  
 and concrete to be removed  
 and replaced with new curb  
 and concrete. All work to be  
 done in accordance with  
 specifications for 30" concrete  
 curb.

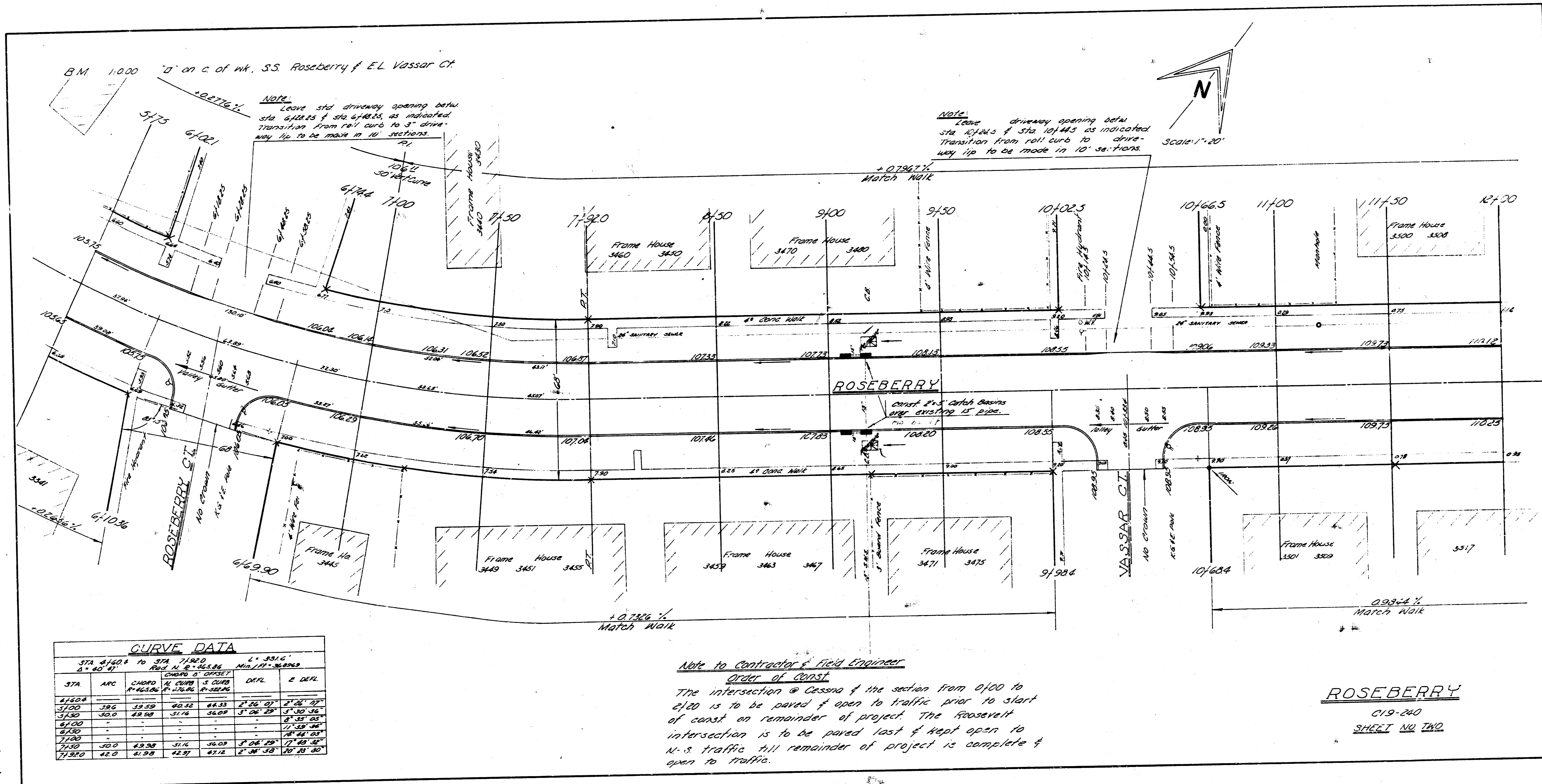


EXCAVATION		COMP. FILL	
PRD	CITY	PRD	CITY
2912.1	3229		
2812	37.0	00	00
3293.3	606.9		



**ROSEBERRY**  
 EL. HILLSIDE - ST. PAWNEE  
**30" CONC. CURB**  
 CITY OF WICHITA  
 B. E. SMITH - CITY ENGR  
 DATE: OCT. 1960 C19-240

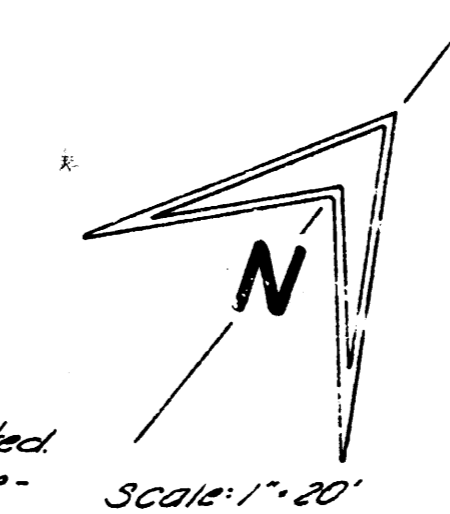
SHEET NO. ONE



B.M. 1.000 "D" on c. of wk. S.S. Roseberry of E.L. Vassar Ct.

NOTE: Leave 3rd driveway opening betw sta 6180.25 & Sta 6184.25, as indicated. Transition from roll curb to 3" drive way 1/2" to be made in 10' sections.

NOTE: Leave driveway opening betw sta 10141.25 & Sta 10145.25 as indicated. Transition from roll curb to drive way 1/2" to be made in 10' sections.

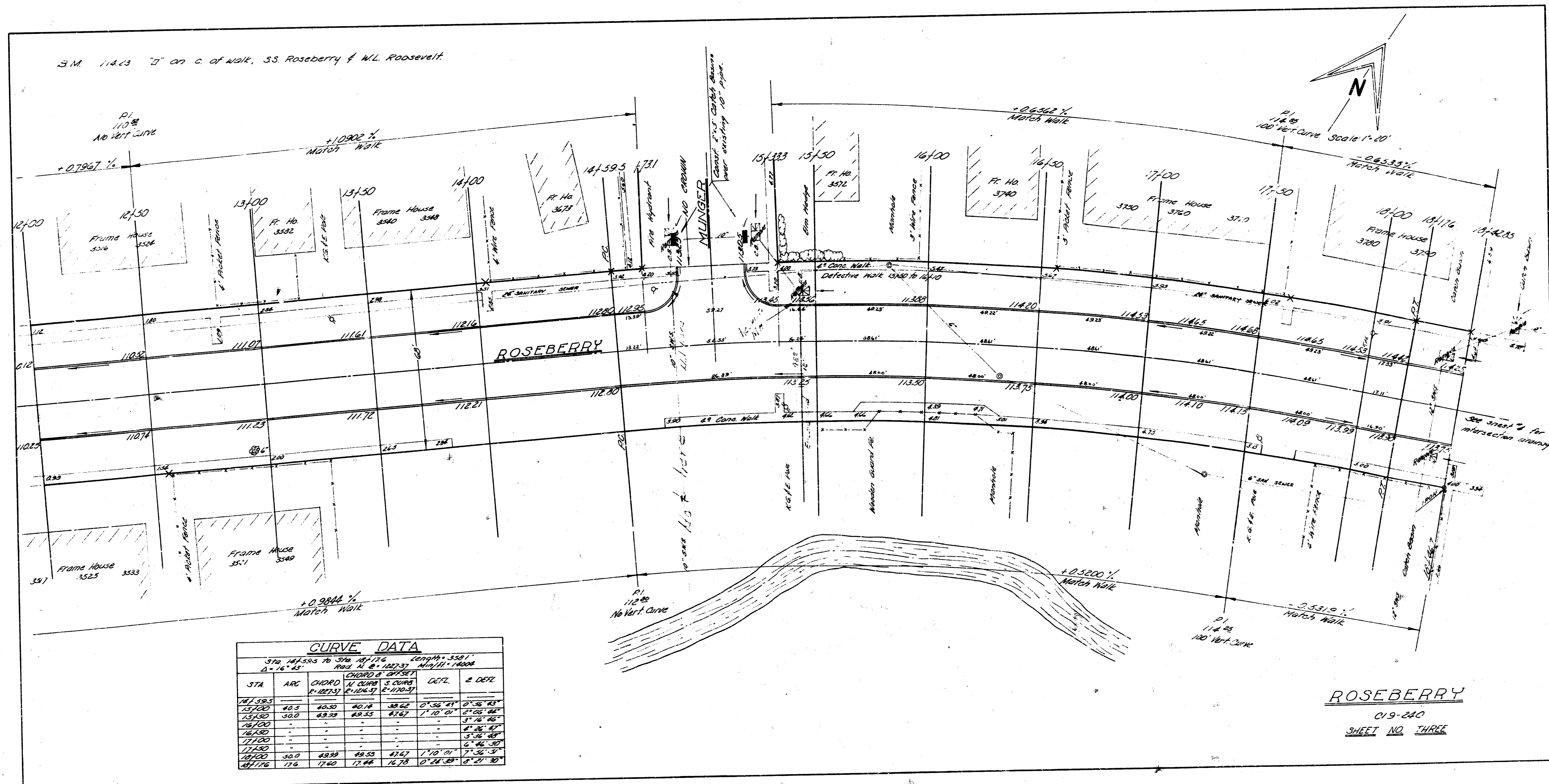


CURVE DATA						
STA	ARC	CHORD	CHORD	CHORD	DEFL.	E. DEFL.
STA 6162.5 TO STA 7192.0						
R=11.8' Δ=40.91'						
6162.5	386	39.59	40.92	42.33	2° 26' 03"	1" 26' 03"
6170	50.0	49.98	51.74	53.89	3° 26' 29"	3" 30' 36"
6180	-	-	-	-	-	8" 33' 03"
6190	-	-	-	-	-	11' 53' 04"
6200	50.0	49.98	51.74	53.89	3° 26' 29"	3" 30' 36"
6210	42.0	41.98	43.97	46.12	2° 26' 50"	2" 29' 50"

Note to Contractor & Field Engineer  
Order of Const.  
 The intersection @ Cassia of the section from 6100 to 6120 is to be paved & open to traffic prior to start of const. on remainder of project. The Roosevelt intersection is to be paved last & kept open to N-S traffic till remainder of project is complete & open to traffic.

**ROSEBERRY**  
 C19-240  
 SHEET NO TWO

S.M. 114.03 "D" on c. of walk, S.S. Roseberry & W.L. Roosevelt

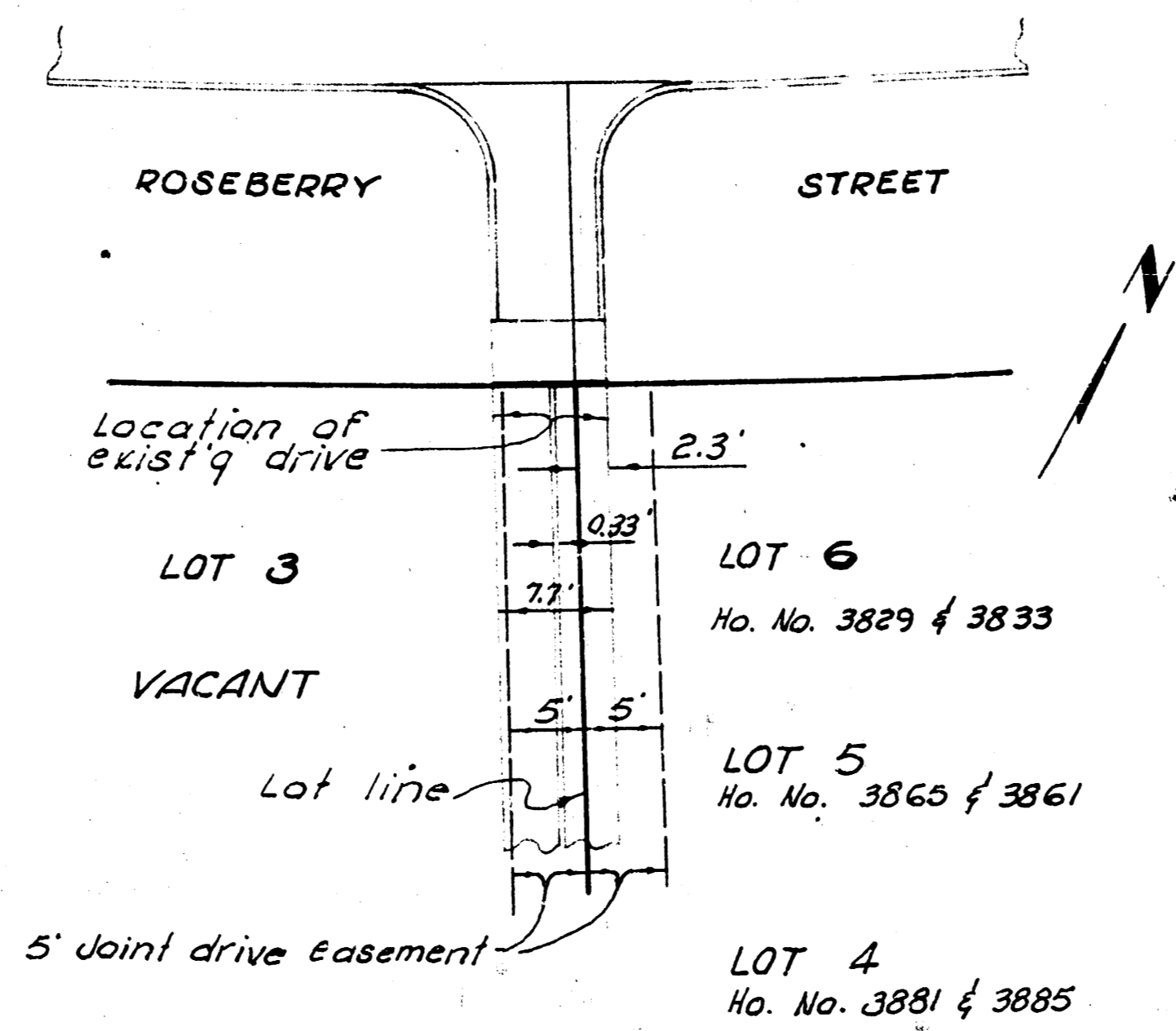


**CURVE DATA**

STA 147.503 TO STA 147.176 (Rising, 350.1)  
 STA 147.176 TO STA 147.000 (Falling, 350.1)

STA	ARC	CHORD	CHORD	CHORD	CHORD	DETL.	E. DEFL.
		(1/2 CHORD)	(1/2 CHORD)	(1/2 CHORD)	(1/2 CHORD)		
147.503	48.5	40.30	40.18	39.62	0.56	41'	0.38
157.00	30.0	49.39	49.53	47.67	1.72	52'	0.25
167.00	-	-	-	-	-	-	-
177.00	-	-	-	-	-	-	-
187.00	-	-	-	-	-	-	-
197.00	30.0	48.89	48.53	47.67	1.70	51'	0.26
207.176	17.6	17.60	17.60	16.78	0.82	30'	0.21

**ROSEBERRY**  
 C19-240  
 SHEET NO. THREE



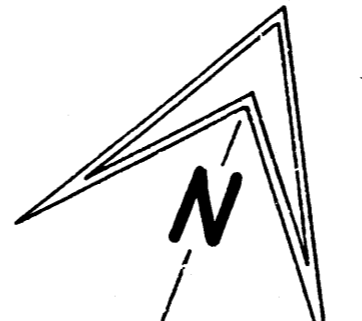
Property owners will have to pay cash for all that part of this approach adjacent to lot 3 which is shaded blue.

That part of approach in front of lot 6, which is shaded green can be assessed to lot 6, but lots 4 and 5 should pay their share.

Existing conc. ribbon drive on lots 3 and 6 is 1/2" off center and part of drive falls outside of 5' easement on lot 3.

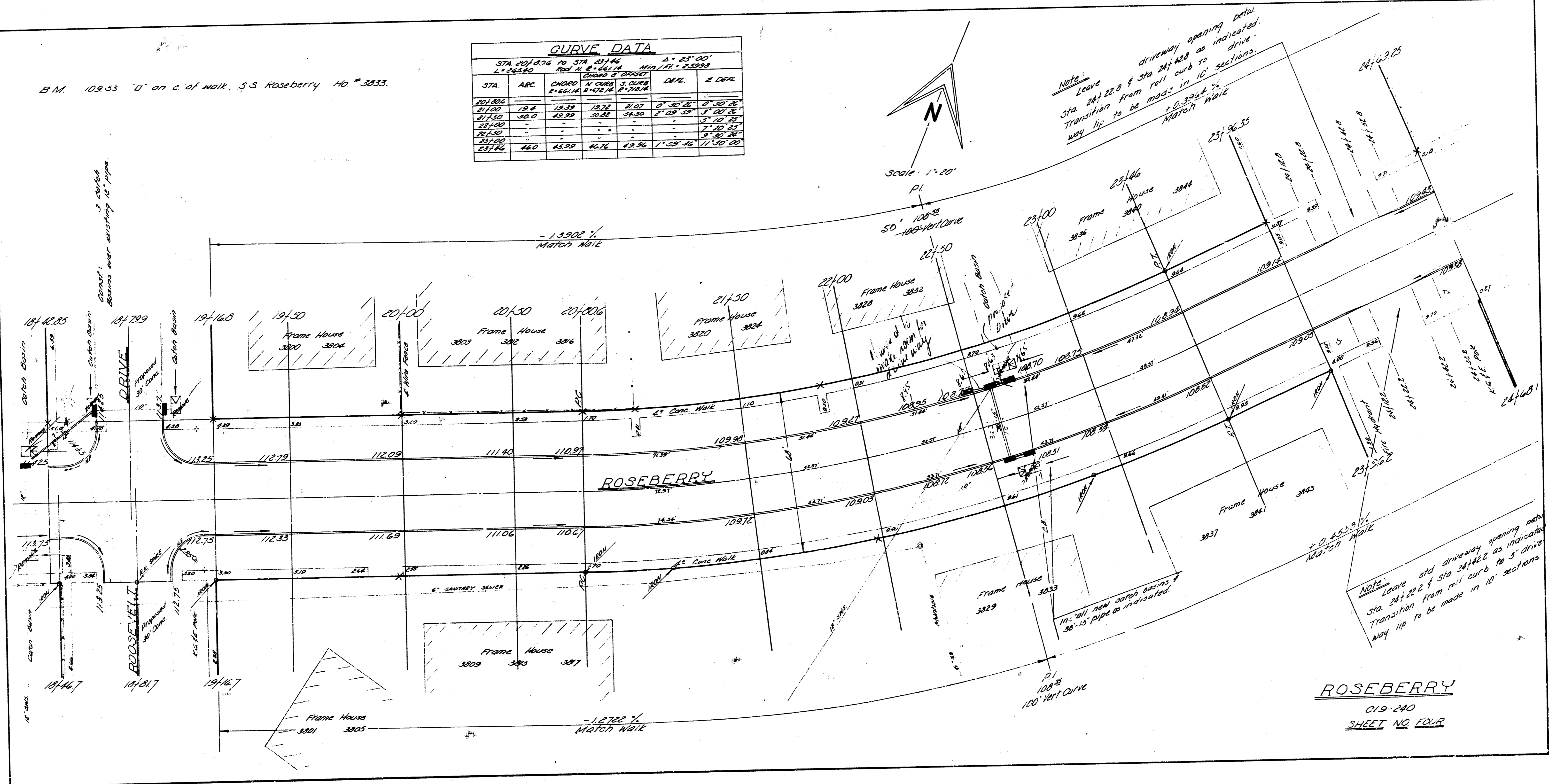
B.M. 109.53 "D" on c. of walk, S.S. Roseberry HO. # 3033.

CURVE DATA						
STA 201406 TO STA 21144		Δ = 25° 00'				
L = 555.0		Rad. M. = 661.14		Min. 1/12 = 2.3333		
STA	ARC	CHORD	1/2 CHORD	2/3 CHORD	DELTA	± DELTA
201406	18.4	19.59	18.74	2.07	0° 30' 22"	0° 30' 22"
21144	50.0	42.89	30.82	54.30	1° 29' 59"	1° 29' 59"
22140	-	-	-	-	2° 10' 24"	2° 10' 24"
23100	-	-	-	-	2° 50' 24"	2° 50' 24"
23162	46.0	43.89	42.76	49.96	1° 59' 36"	1° 59' 36"



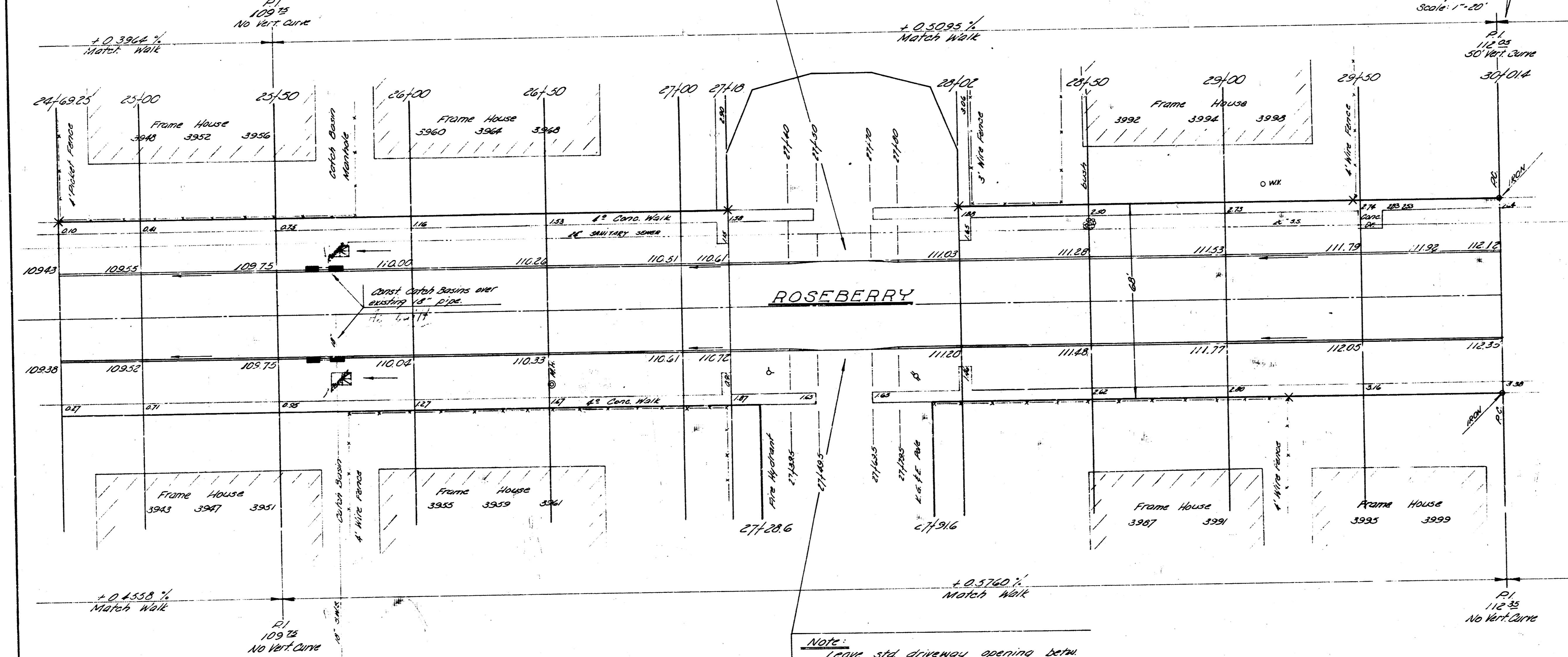
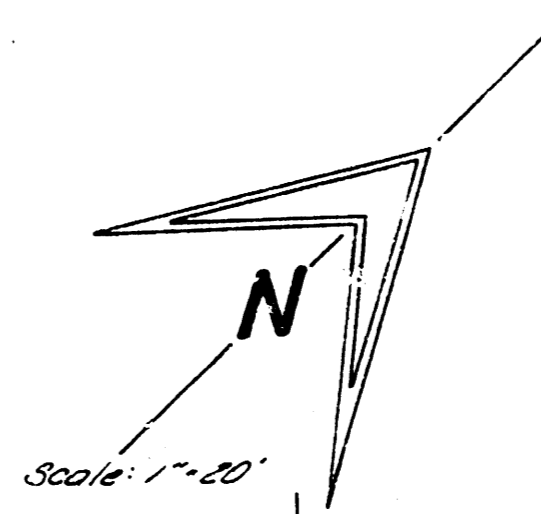
SCALE: 1" = 20'

NOTE: Leave driveway opening detail. Sta 24122.8 & Sta 24128 as indicated. Transition from roll curb to drive-way lip to be made in 10' sections.



B.M. 11271 "D" on c. of walk, S.S. Roseberry No. 3987.

NOTE:  
Leave driveway opening betw. sta 27150 & sta 27170 as indicated. Transition from roll curb to driveway lip to be made in 10' sections.



Note to contractor & field engr.:  
Roseberry has an existing asph. conc. mat approx. 25' wide through out its entire length. This mat is to be excavated separately and disposed of within the Plan-view area as directed by the city Dept. of street maintenance. Payment will be made as sq yds. of surface material removed. Final quantity of removed material to be determined by the city field engr.

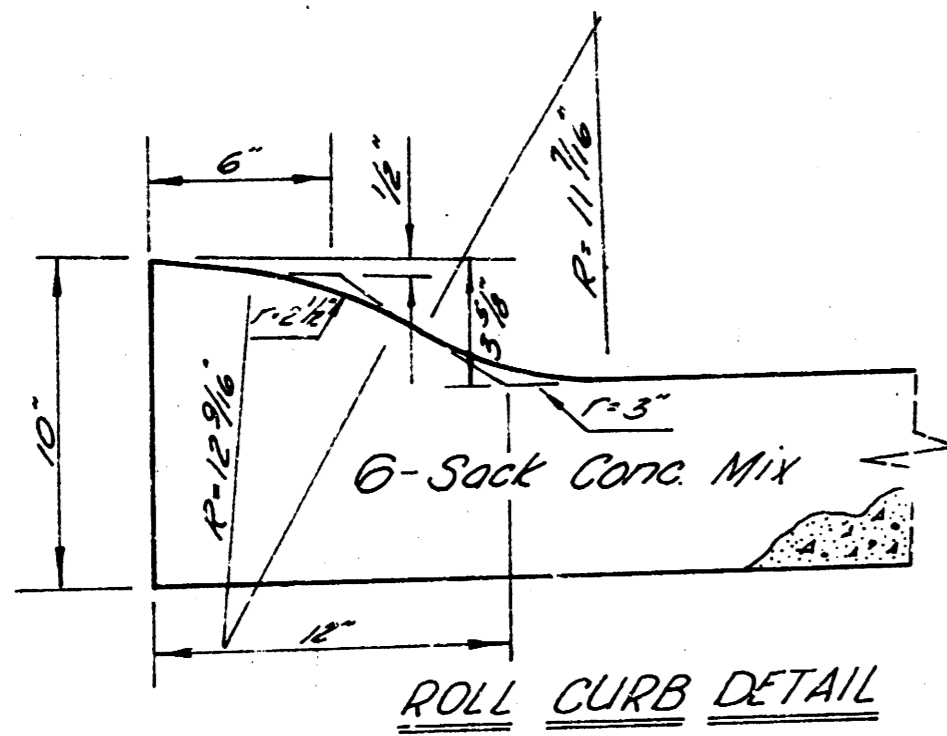
Note:  
City field engineer will direct the removal & replacement of curbs & sidewalk where necessary.

NOTE:  
Leave std driveway opening betw. sta 27149.5 & sta 27169.5 as indicated. Transition from roll curb to 3' driveway lip to be made in 10' sections.

**ROSEBERRY**  
C19-240  
SHEET NO. FIVE

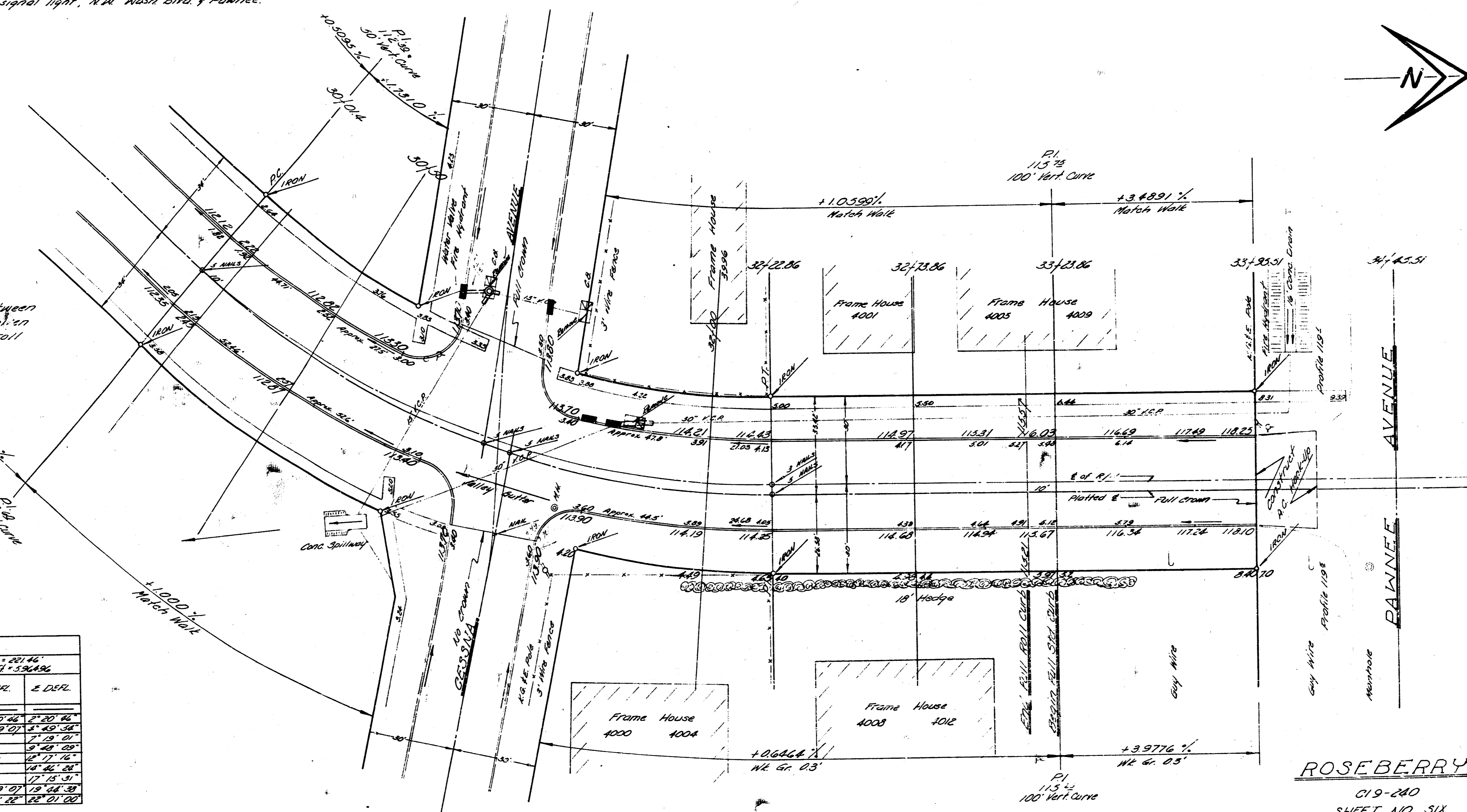
B.M. 11835 "D" on c. of walk, N.S. Roseberry & S.L. Pawnee.  
 B.M. 11836 "X" on N.S. conc. base signal light, N.W. Wash Blvd. & Pawnee.

Note:  
 Stationing on center line from 30+01.4 to end of project.



Note:  
 Const roll curb between sta 04+00 & sta 33+13.86. Elev. given for these stations are top of roll curb & down 0.3 to 110 line.

CURVE DATA						
Sta 30+01.4 to Sta 33+13.86		Length = 331.46'				
R = 1000'		Min/111° 39' 43"				
STA	ARC	CHORD	CHORD OF CURVE	DER.	2 DER.	
30+01.4						
30+125	23.60	23.38	23.47	21.71	2° 10' 40"	21.20' 28"
30+250	47.20	46.76	46.94	43.42	4° 22' 01"	41.40' 38"
30+375						71.01' 01"
31+00						119.02' 08"
31+125						147.71' 76"
31+250						187.42' 28"
31+375						237.75' 31"
32+00	23.60	23.39	23.48	23.00	2° 29' 01"	23.04' 39"
32+125	47.20	46.78	46.96	46.03	4° 58' 02"	45.01' 00"



ROSEBERRY  
 C19-280  
 SHEET NO SIX

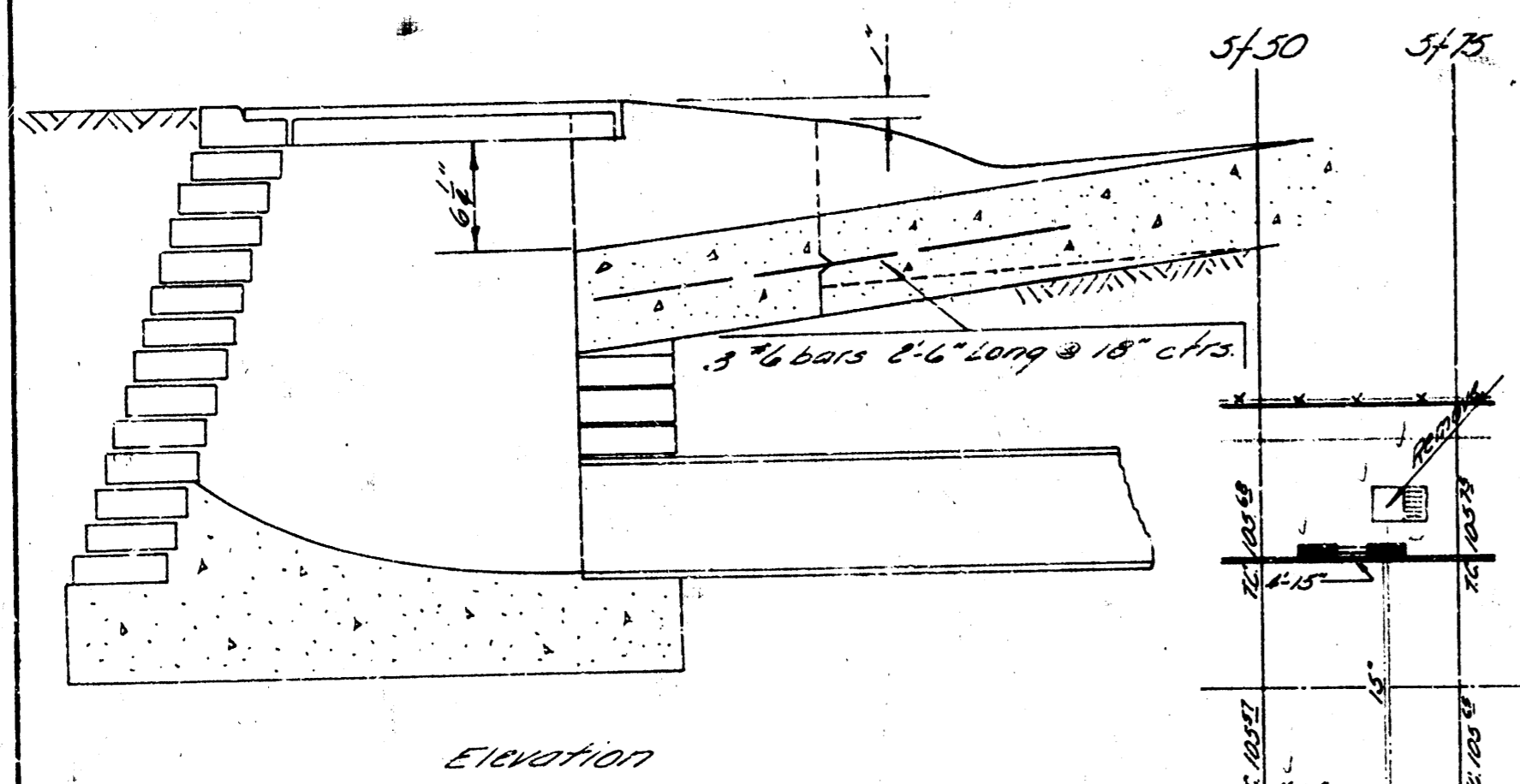
B.M. 110.00 "0" on c. of walk, S.S. Roseberry & EL. Vassar St.  
 B.M. 114.23 "0" on c. of walk, S.S. Roseberry & W.L. Roosevelt  
 B.M. 109.53 "0" on c. of walk, S.S. Roseberry @ Ho. # 3033  
 B.M. 112.71 "0" on c. of walk, S.S. Roseberry @ Ho. # 3907

Note:  
 Use reinforced concrete pipe of the size specified where new pipe is required.

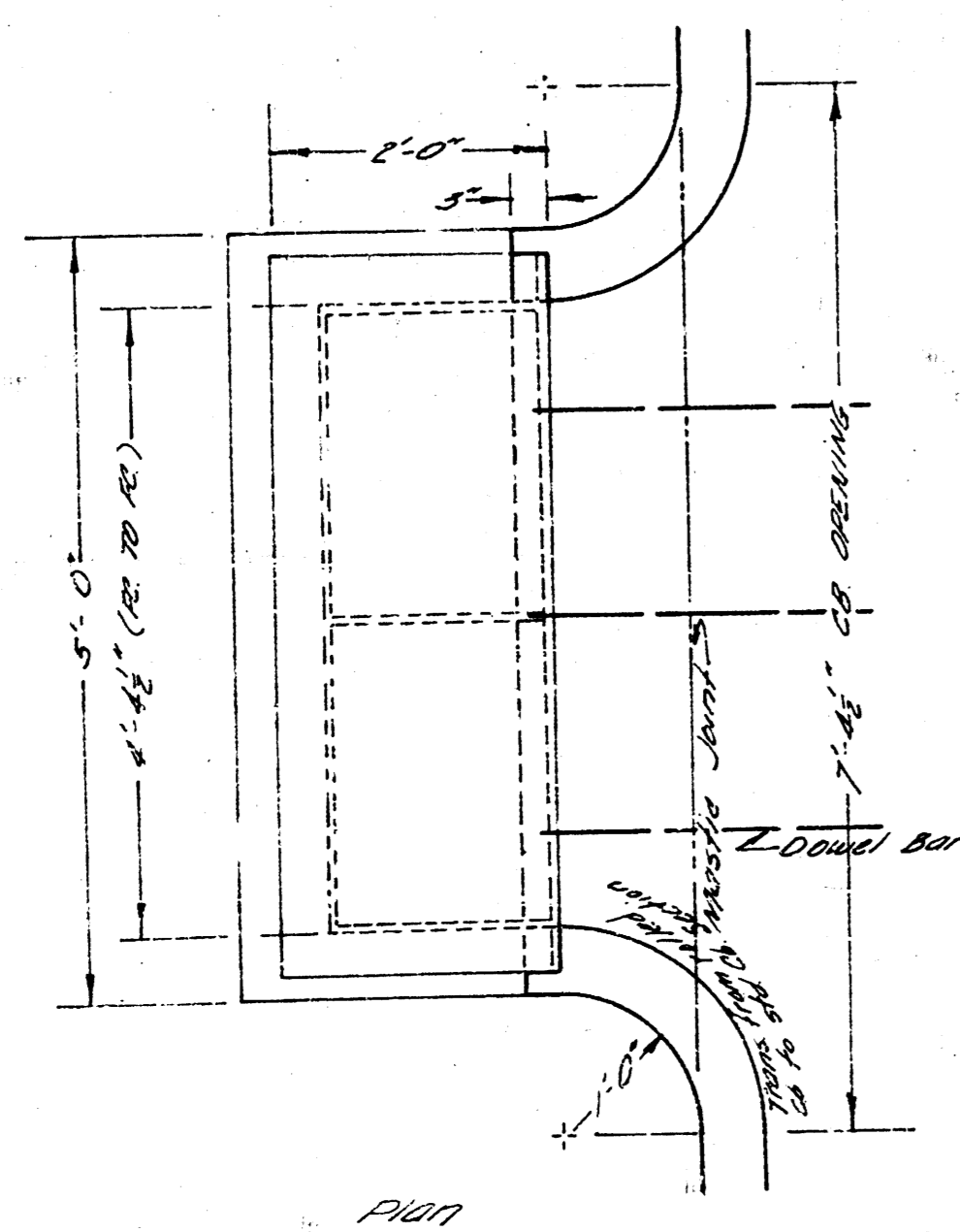
Note:  
 Remove (3) Catch Basins & install (7) Pipe Pops at intersection of Holyoke & Roseberry.

Remove (3) 4'x4' Catch Basins & install (4) 2'x5' C.B. & (1) 1st manhole. Install 12' of 30" & 16' of 15" R.C.P.

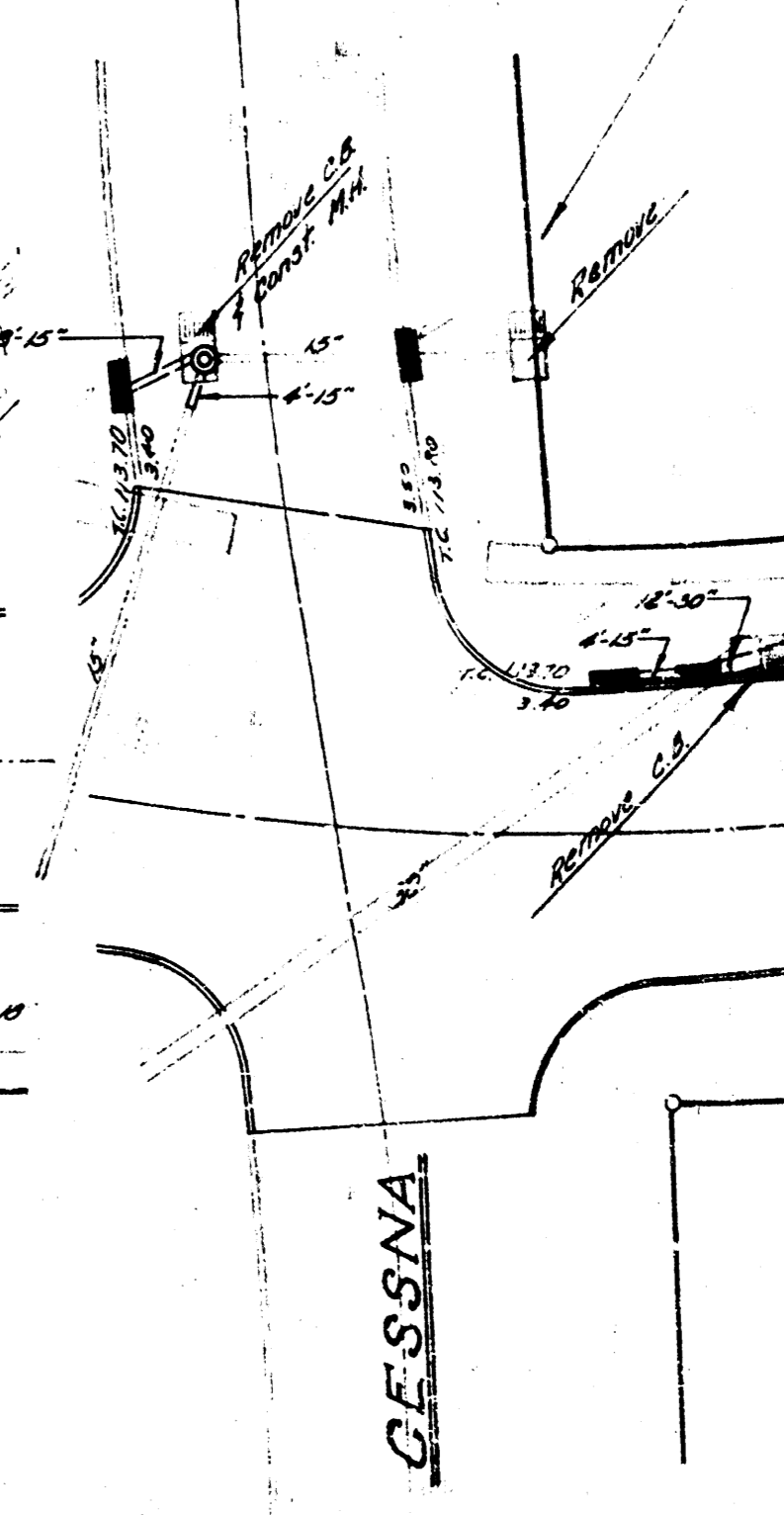
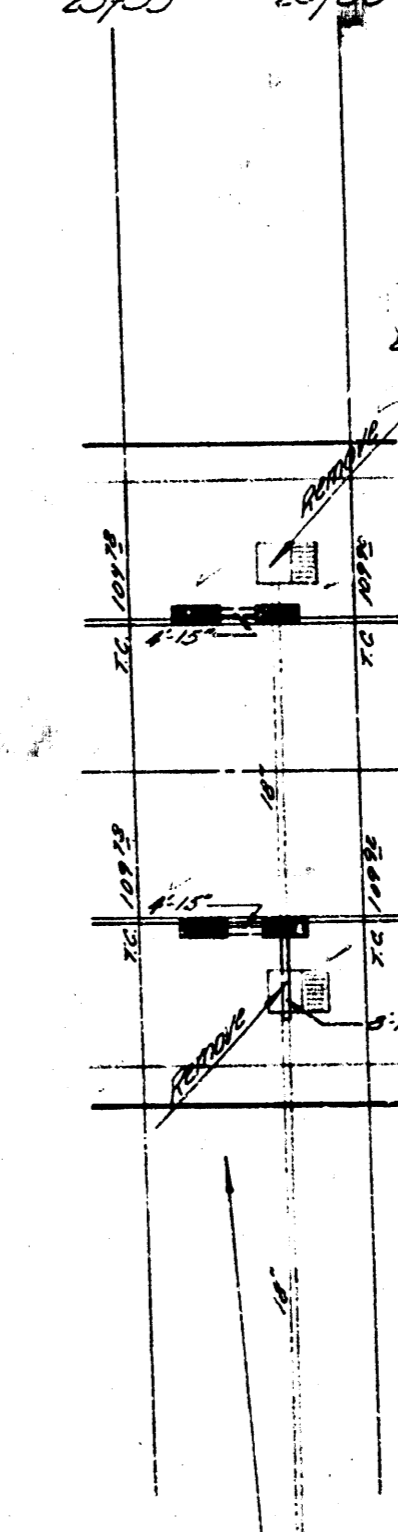
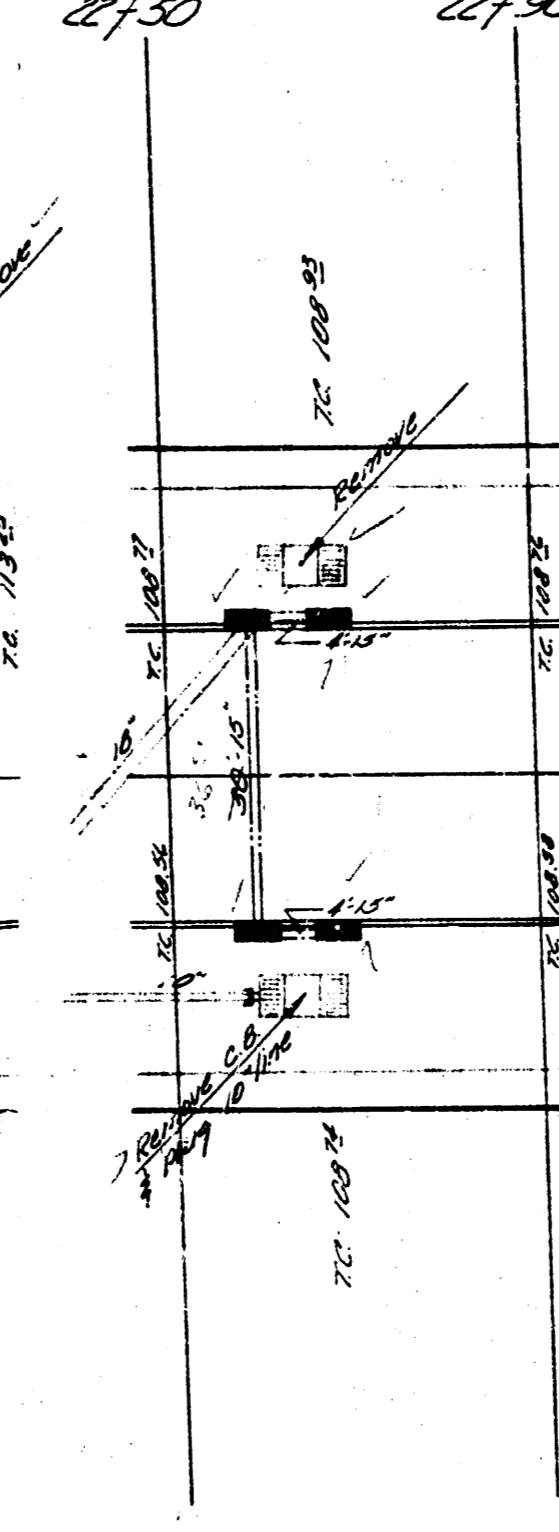
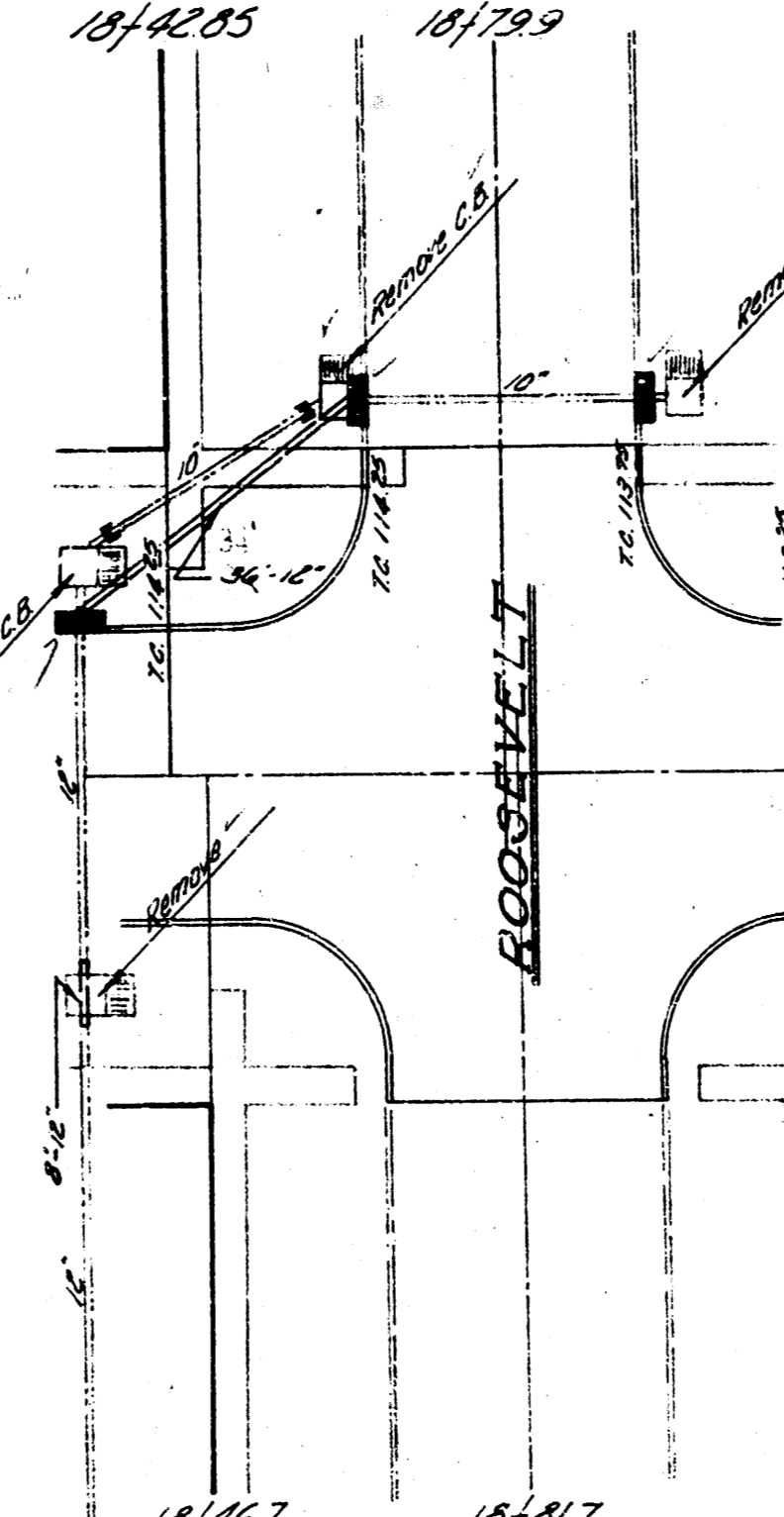
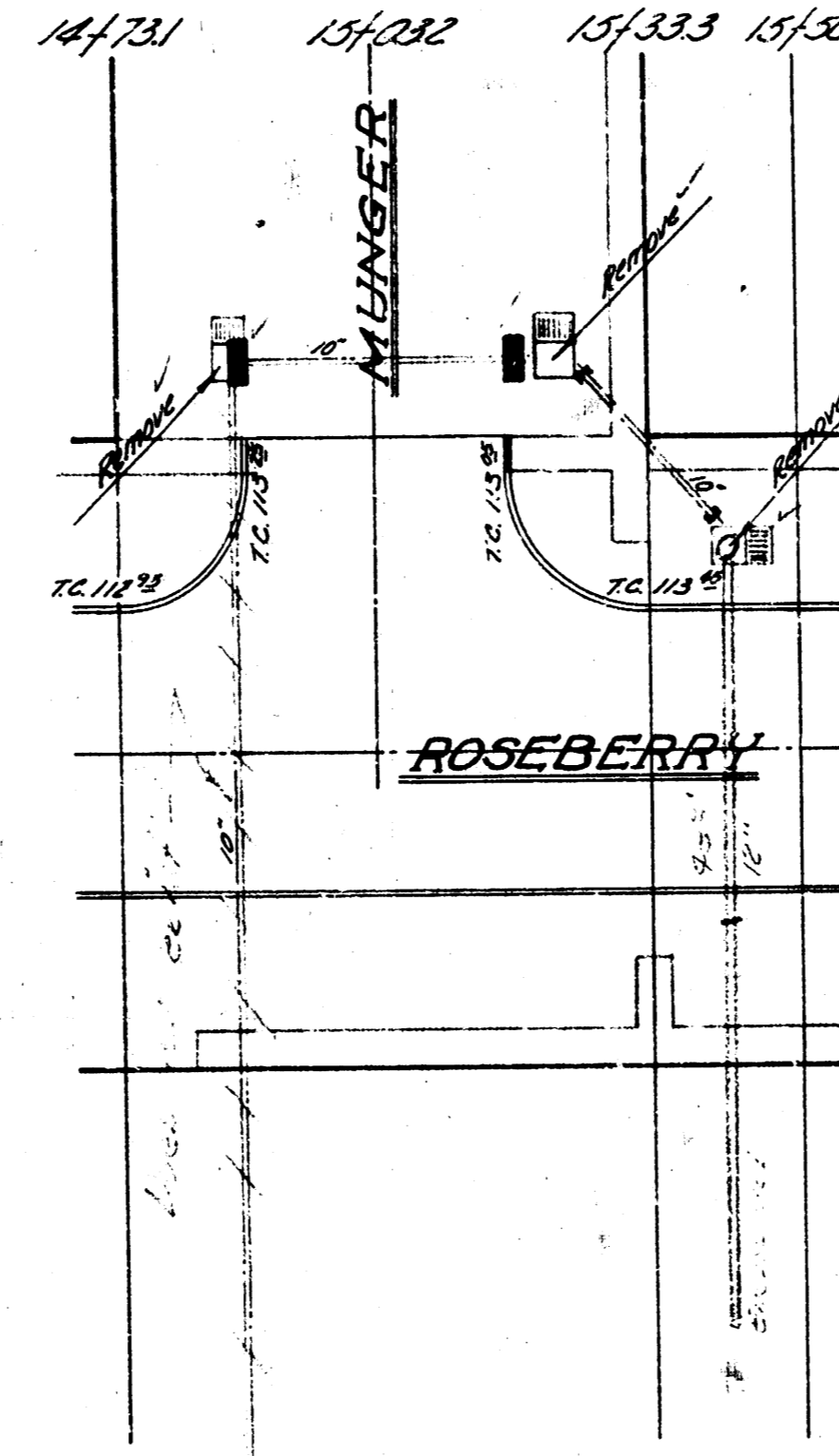
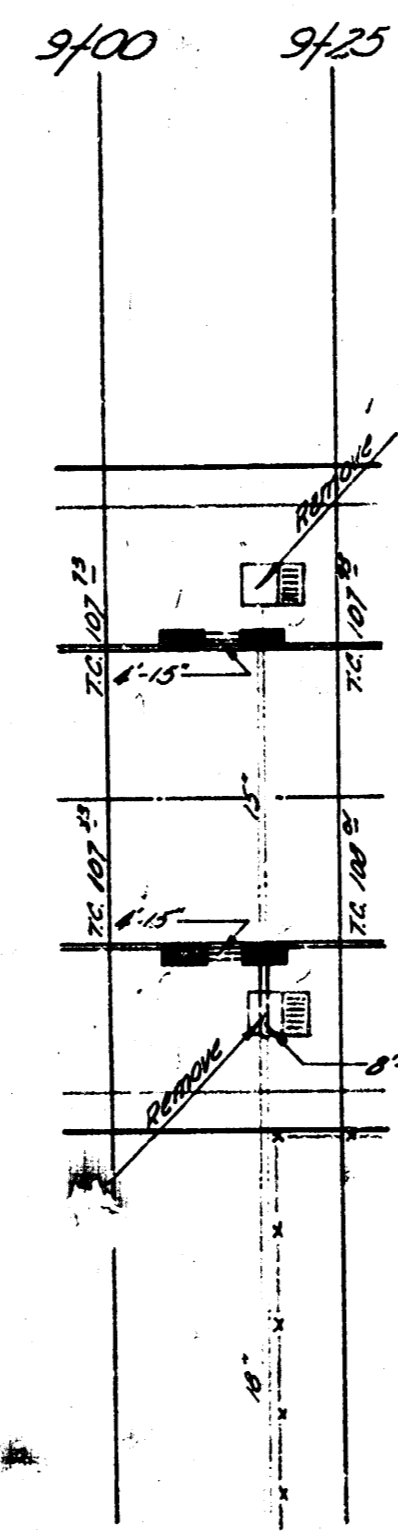
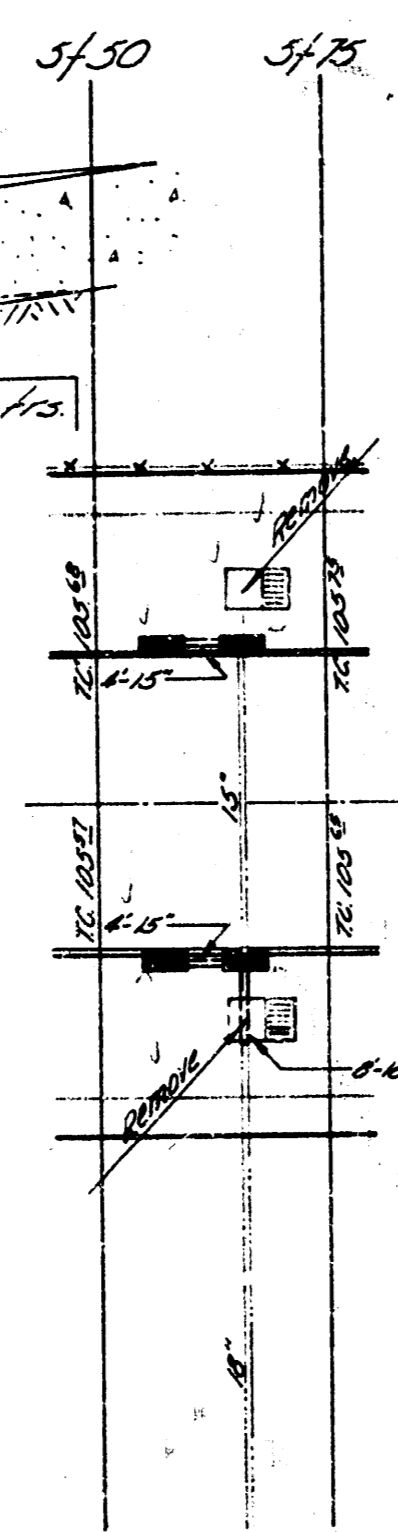
Pull Out Catch Basin Detail



Elevation



Plan



Remove (4) 4'x4' Catch Basins at the locations shown. Install (4) 2'x5' Catch Basins over existing pipe. Four foot sections of 15" pipe will connect (4) more 2'x5' basins to the system.

Remove (3) 4'x4' Catch Basins & install (2) 2'x5' C.B. over existing pipe as shown. Close one 10" pipe with (2) pipe plugs.

Remove (4) 4'x4' Catch Basins & install (3) 2'x5' C.B. & 44' of 12" pipe at the locations shown on plan. Close one 10" pipe.

Remove (2) 4'x4' Catch Basins & install (4) 2'x5' C.B. & 30' of pipe at the locations shown. Close one 10" pipe.

Remove (2) 4'x4' Catch Basins & install (4) 2'x5' C.B. as shown.

SCALE: 1" = 20'



INCIDENTAL DRAINAGE

ROSEBERRY  
 E.L. HILLSIDE - SL PAVING

B.E. Smith City Engineer  
 Date: Jul 1960, Proj. No. C79-20