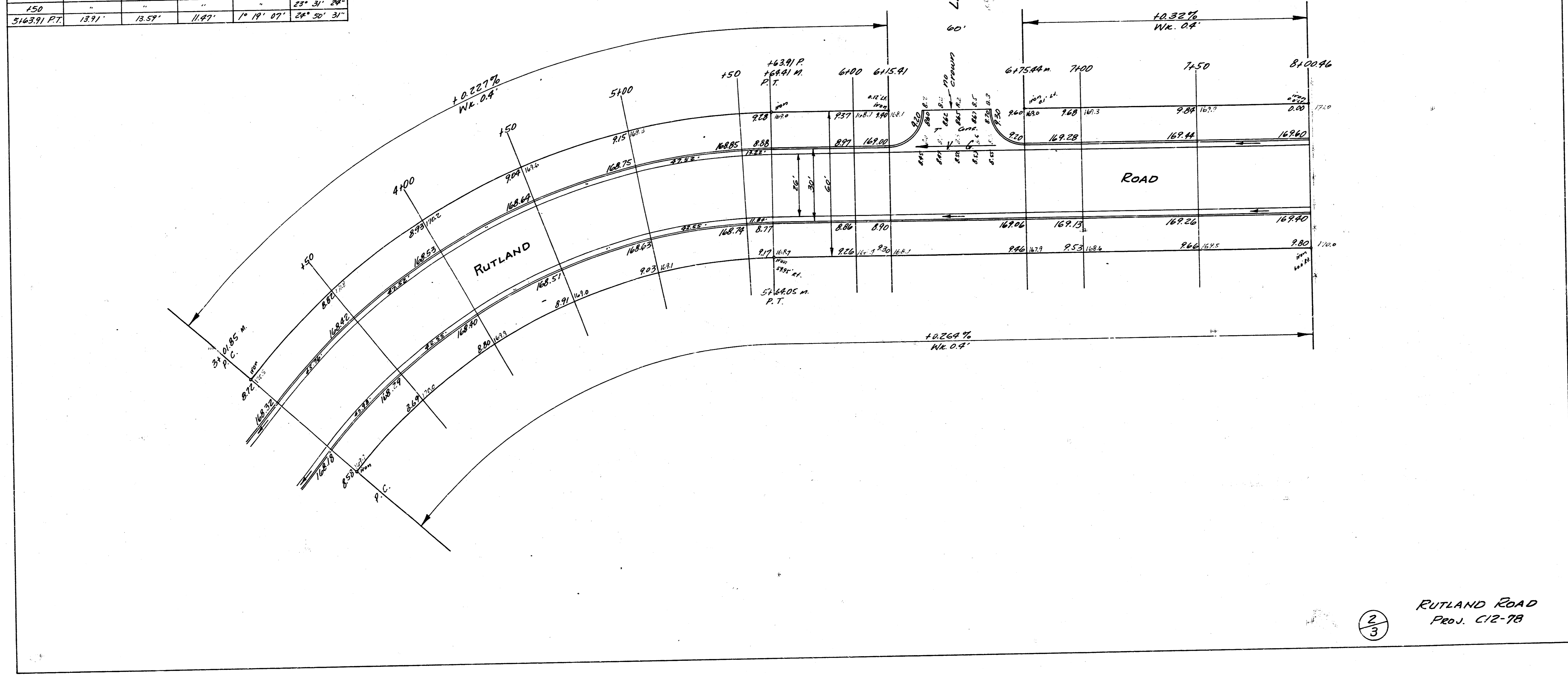
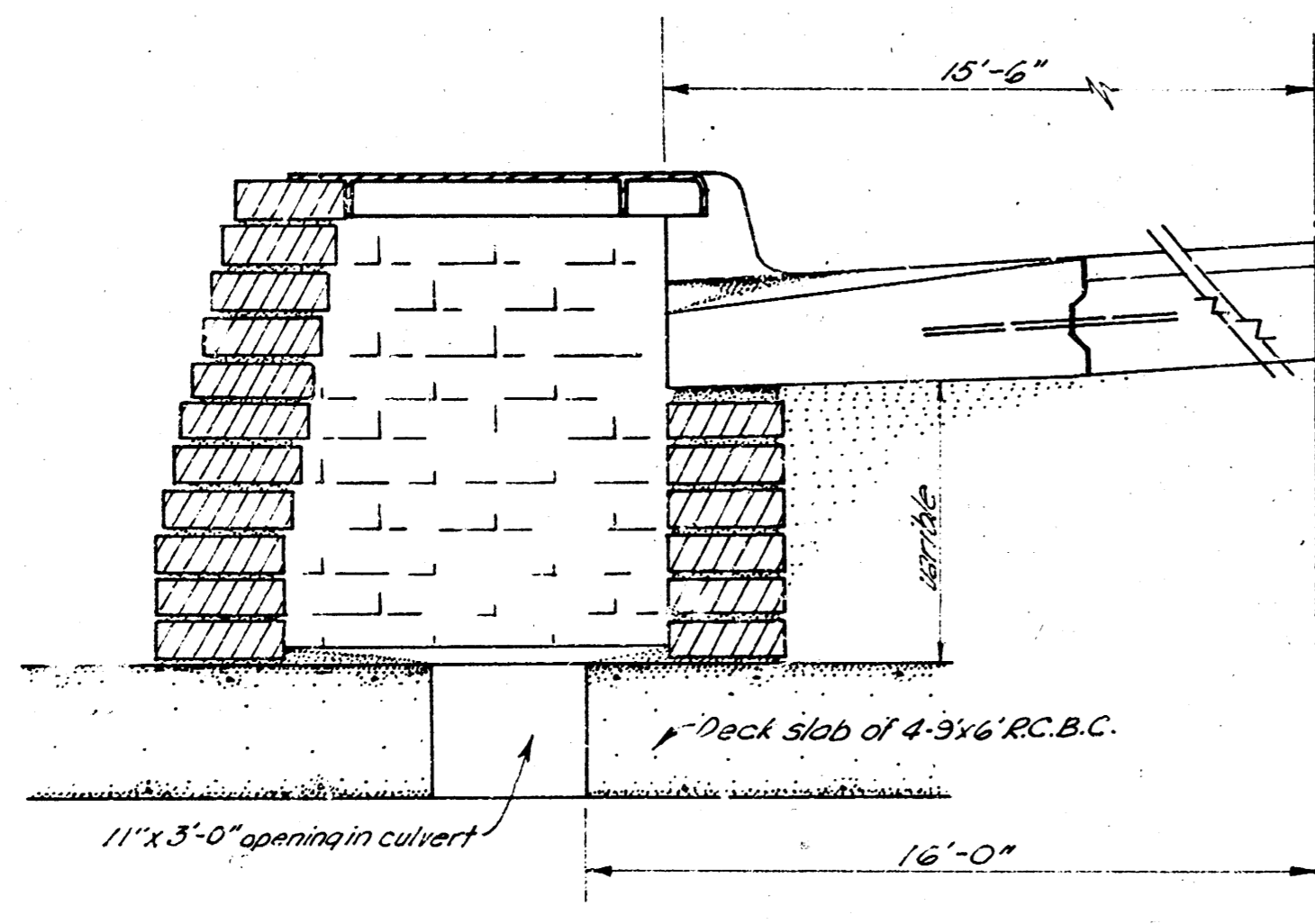
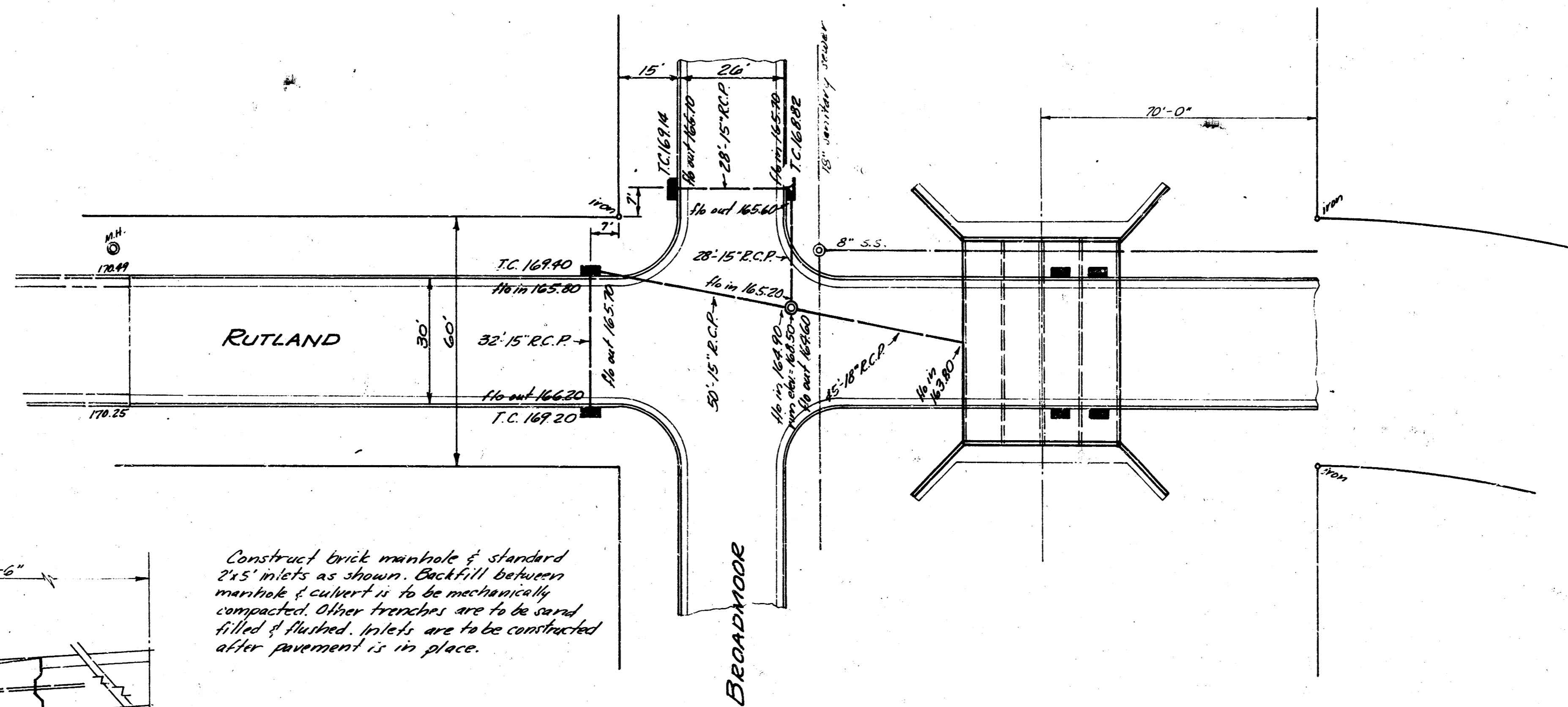
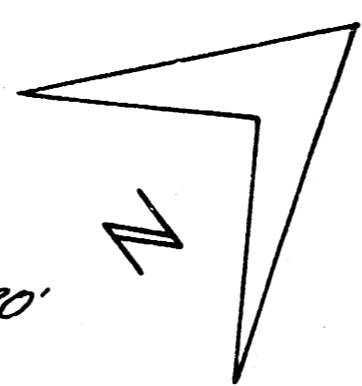


CURVE DATA					
Sta. on N. P.L.	Arc length	Chord length	Chord length to N. Cb.	Deflection	Total deflection
340.85 P.C.					
150	48.5'	46.99'	39.66'	4° 33' 52"	4° 33' 52"
400	50.0'	48.79'	41.18'	4° 48' 23"	9° 18' 15"
150	"	"	"	"	18° 02' 38"
5400	"	"	"	"	18° 47' 01"
150	"	"	"	"	23° 31' 24"
5163.91 P.T.	13.91'	13.57'	11.97'	1° 19' 07"	24° 50' 31"



B.M. 171.33 'x' cut on N. rim M.H. ring N.S. Rutland
 @ E.L. Woodlawn Village 2nd Addn.

Scale: 1" = 20'



Catchbasin Detail Over 4-9x6 R.C.B.C.

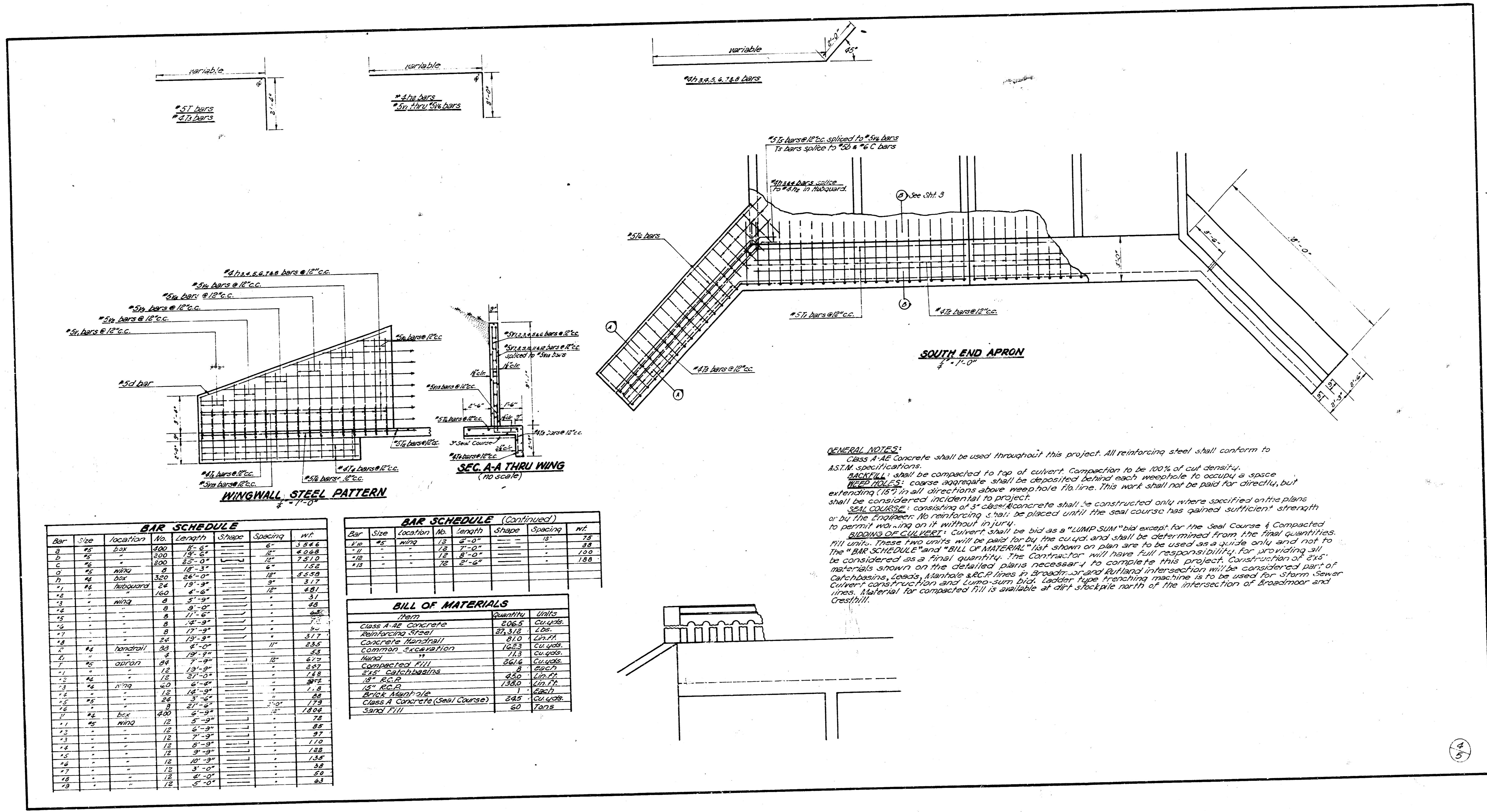
Construct brick manhole of standard
 24" inlets as shown. Backfill between
 manhole & culvert is to be mechanically
 compacted. Other trenches are to be sand
 filled & flushed. Inlets are to be constructed
 after pavement is in place.



INCIDENTAL DRAINAGE
 EUTLAND ROAD
 E.L. 2nd ADDN TO WOODLAWN VILLAGE TO
 E.L. LOT 1, Bk. D, 3rd ADDN TO WOODLAWN VILLAGE
 4 - 9x6' R.C.B.C.

CITY OF WICHITA, KANSAS
 B.E. SMITH CITY ENGINEER
 MAY 1963, 1963 PROJ. C-12-78

1/5



BAR SCHEDULE

Bar	Size	Location	No.	Length	Shape	Spacing	WT
1	#2	box	400	6'-0"		6"	3.544
2	#2		400	13'-0"		6"	8.069
3	#2		400	25'-0"		6"	17.610
4	#2	wing	8	18'-3"		6"	1.52
5	#2	box	360	6'-0"		3"	3.17
6	#2	handrail	24	6'-0"		18"	5.990
7	#2		160	6'-0"		18"	3.81
8	#2	wing	8	9'-0"			3.1
9	#2		8	11'-6"			6.8
10	#2		8	14'-9"			7.7
11	#2		8	17'-9"			8.8
12	#2		8	19'-9"			9.9
13	#2	handrail	24	6'-0"		11"	2.95
14	#2	apron	4	19'-9"		18"	6.7
15	#2		16	19'-9"		18"	2.97
16	#2		16	27'-0"		18"	1.8
17	#2	wing	24	6'-0"		18"	1.8
18	#2	box	400	6'-0"		18"	1.804
19	#2	wing	12	6'-0"		18"	7.8
20	#2		12	6'-0"		18"	8.8
21	#2		12	7'-9"		18"	9.7
22	#2		12	9'-9"		18"	1.0
23	#2		12	9'-9"		18"	1.88
24	#2		12	10'-9"		18"	1.98
25	#2		12	3'-0"		18"	3.8
26	#2		12	6'-0"		18"	5.0
27	#2		12	6'-0"		18"	6.8

BAR SCHEDULE (Continued)

Bar	Size	Location	No.	Length	Shape	Spacing	WT
28	#2	wing	12	6'-0"		18"	7.8
29	#2		12	7'-0"		18"	8.8
30	#2		12	8'-0"		18"	1.0
31	#2		12	9'-0"		18"	1.88

BILL OF MATERIALS

Item	Quantity	Units
Class A-42 Concrete	206.5	Cu.Yds.
Reinforcing Steel	27,516	Lbs.
Concrete Handrail	81.0	Lbs.
Common Excavation	1,623	Cu.Yds.
Hand	113	Cu.Yds.
Compacted Fill	861.6	Cu.Yds.
2x4 Catchbasins	8	Each
18" R.C.P.	450	Lbs.
12" R.C.P.	1,380	Lbs.
Brick Manhole	1	Each
Class A Concrete (Seal Course)	24.9	Cu.Yds.
Sand Fill	60	Tons

GENERAL NOTES:
 Class A-42 Concrete shall be used throughout this project. All reinforcing steel shall conform to ASTM specifications.
 WEEDHOLE: shall be compacted to top of culvert. Compaction to be 100% of cut density.
 WEEDHOLE: coarse aggregate shall be deposited behind each weedhole to occupy a space extending (16") in all directions above weed hole flange. This work shall not be paid for directly, but shall be considered incidental to project.
 SEAL COURSE: consisting of 3" dense bituminous concrete shall be constructed only where specified on the plans or by the Engineer. No reinforcing shall be placed until the seal course has gained sufficient strength to permit working on it without injury.
 BIDDING OF CULVERT: Culvert shall be bid as a "LUMP SUM" bid except for the Seal Course & Compacted Fill units. These two units will be paid for by the cu.yd. and shall be determined from the final quantities. The "BAR SCHEDULE" and "BILL OF MATERIAL" list shown on plan are to be used as a guide only and not to be considered as a final quantity. The Contractor will have full responsibility for providing all materials shown on the detailed plans necessary to complete this project. Construction of 2x4 catchbasins, Leaky Manhole R.C.P. lines to Broadmoor and Rutland intersection will be considered part of current construction and Lump-sum bid. Ladder type trenching machine is to be used for storm sewer lines. Material for compacted fill is available at dirt stockpile north of the intersection of Broadmoor and Cresthill.