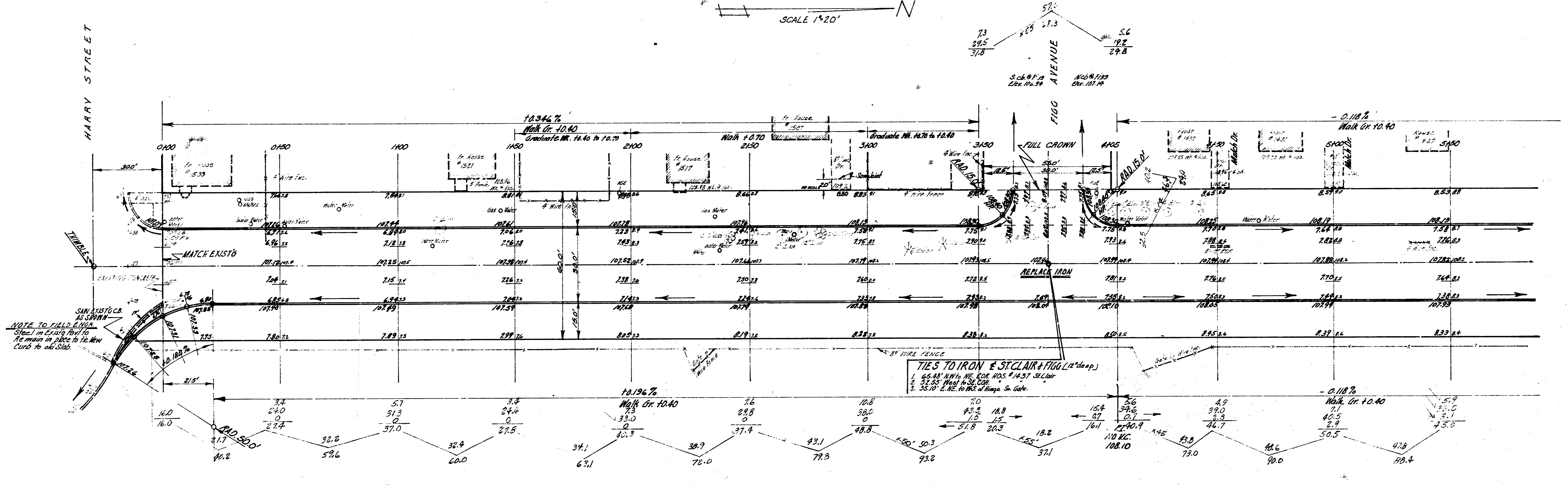


DM 106736 STANDARD WY. CR. MERIDIAN & HARRY
 1/4" 106 73 "0" IN GLOBE CR. WY. CR. HARRY - WIL ST. CLAIR
 3/4" 107 63 "0" IN GLOBE E. CB ST. CLAIR - ST. DOOLEY
 BASE LINE - E. OF ST. CLAIR

SCALE 1"=20'



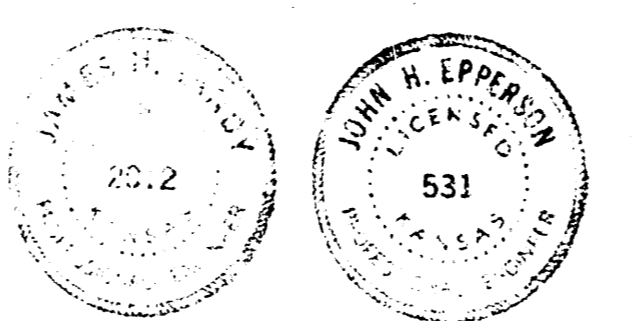
C.A.M. 11/18/29
 S. O. L. 5-10-29

NOTE TO FIELD ENGR.
 Check in existing plan for
 tie main in place to the new
 curb to old side.

TIES TO IRON & ST. CLAIR TIE (12" deep)
 1. 65' AN. WY. CR. FOR 105' 1/2" ST. CLAIR
 2. 22' 50" WY. CR. FOR 105'
 3. 35' 0" ENE. WY. CR. FOR 105'

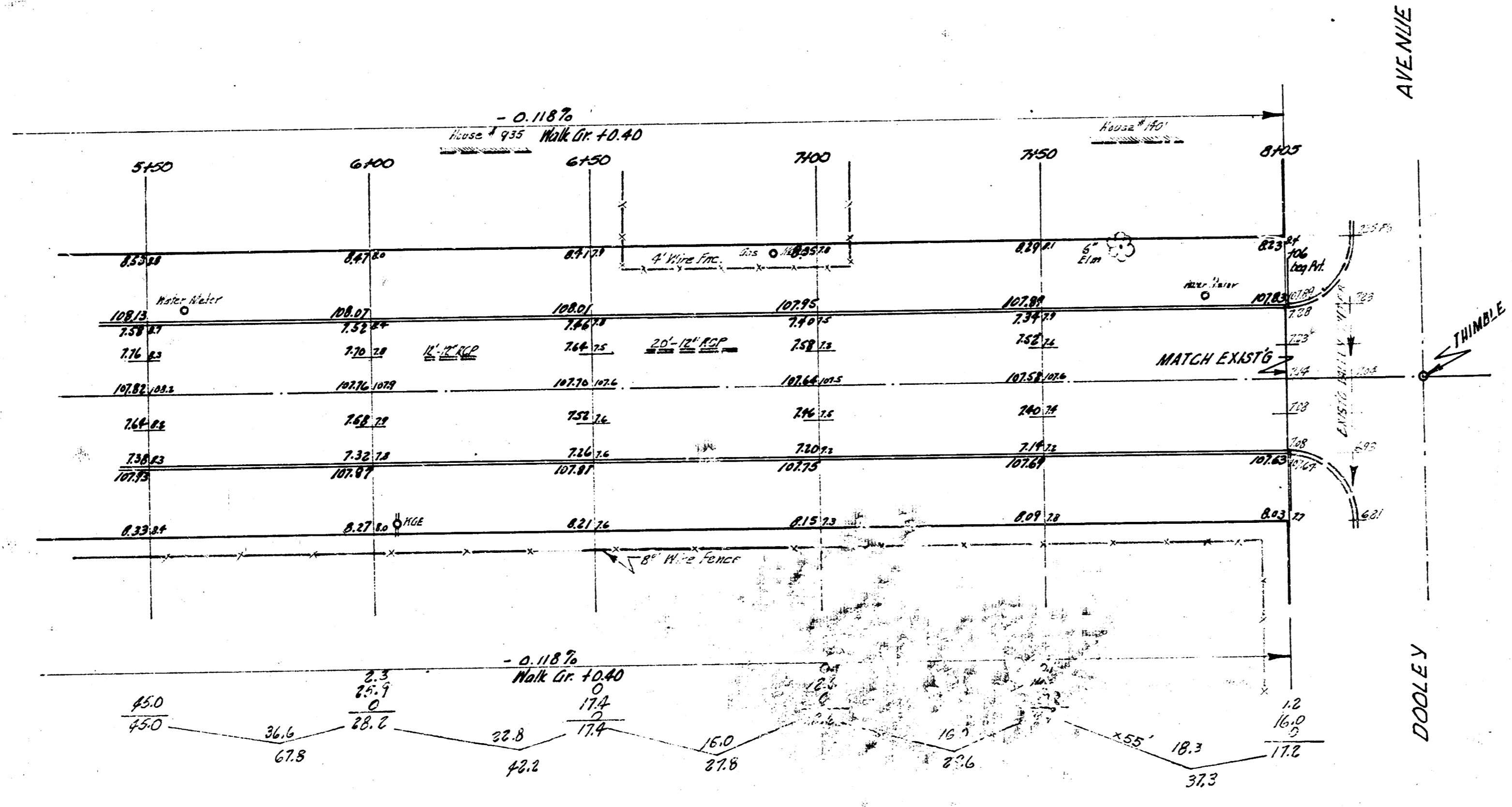
NOTE TO FIELD ENGR. & CONTRACTOR -
 all entrance pipes to be dis-
 in accordance with city's checker.

EXCAVATION TOTAL	
Prop.	CITY
107 961	102 822
10572 Cu yds.	898 0 yds.



ST. CLAIR AVENUE
 NL HARRY STREET TO ST. DOOLEY AVENUE
 300' CONCRETE & CURB
 City of Wichita, Kansas
 B.E. SMITH CITY ENGINEER
 DATE: MARCH 1929, PROJ. NO. C18-146

Sheet 1-2



ST CLAIR AVENUE
 NL. HARRY STR. SL. DOOLEY STR.
 PROJECT NO. C18-146

Sheet 2-2