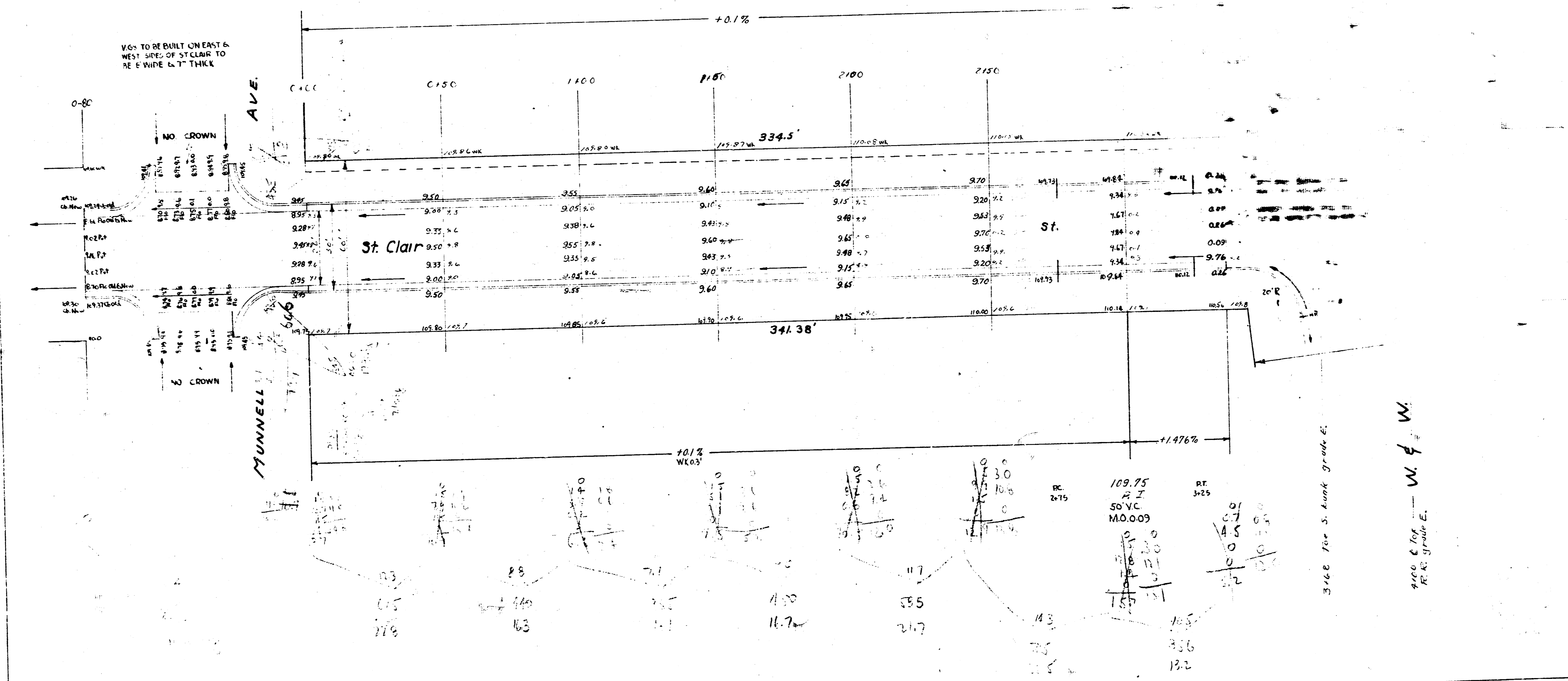
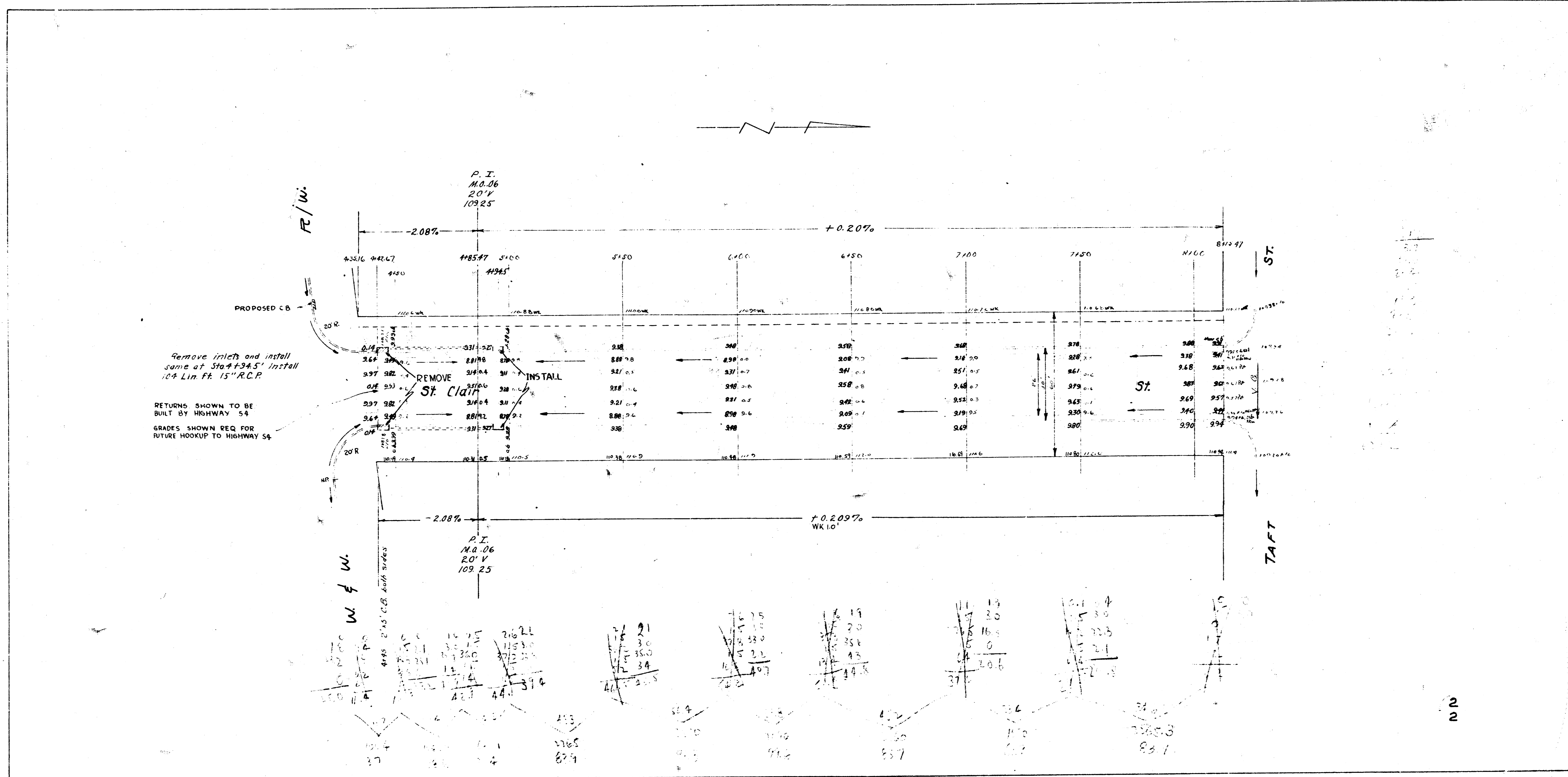


B.M. 10924 "x" in ditch top of W.S. St. Clair, S.L. Munnell.
 E.M. 10566 Iron in Thinkie S.L. University of St. Clair.
 B.M. 10562 "J" in Jones face wk. E. in 4th block E. of ch. N.E. corner St. Clair & 7th.

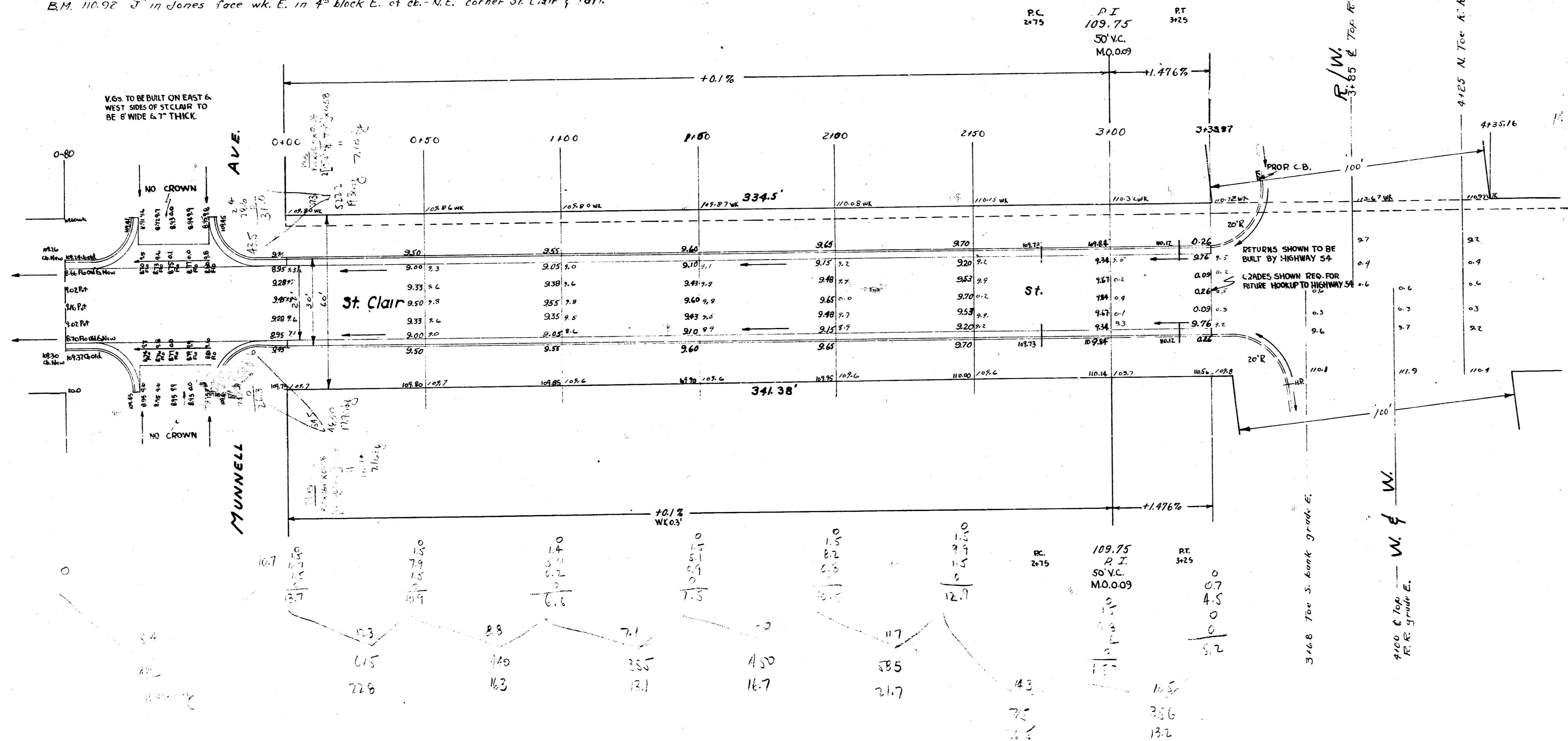


ST. CLAIR AVE
 RECONSTRUCTION & IMPROVEMENT
 CITY OF WICHITA, KANSAS
 L.K. WHITE, CITY ENGINEER
 MAY 1999



0.00

B.M. 109.21 "X" in Flatbie top of W.S. St. Clair, S.L. Munnell.
 B.M. 110.06 "X" in thimble S.L. University of St. Clair.
 B.M. 110.92 "J" in Jones face wk. E. in 4th block E. of ch.-N.E. corner St. Clair & Taft.



1
2

ST. CLAIR AVE.
 N.L. MUNNELL & S.L. TAFT
 COMB. CB. & STR.
 CITY OF WICHITA, KANSAS
 L.K. WHITE CITY ENGINEER
 MAY 1929 PROJ. C19-96

