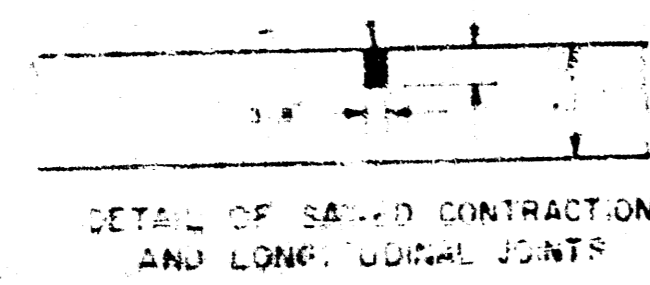


ST FRANCIS AVENUE
S.L. PAWNEE AVE TO S.L. KINKAID PARK ADDITION
 PROJ. NO. DAKS572056
 CITY OF WICHITA, KANSAS
 R. W. LINN, CITY ENGINEER

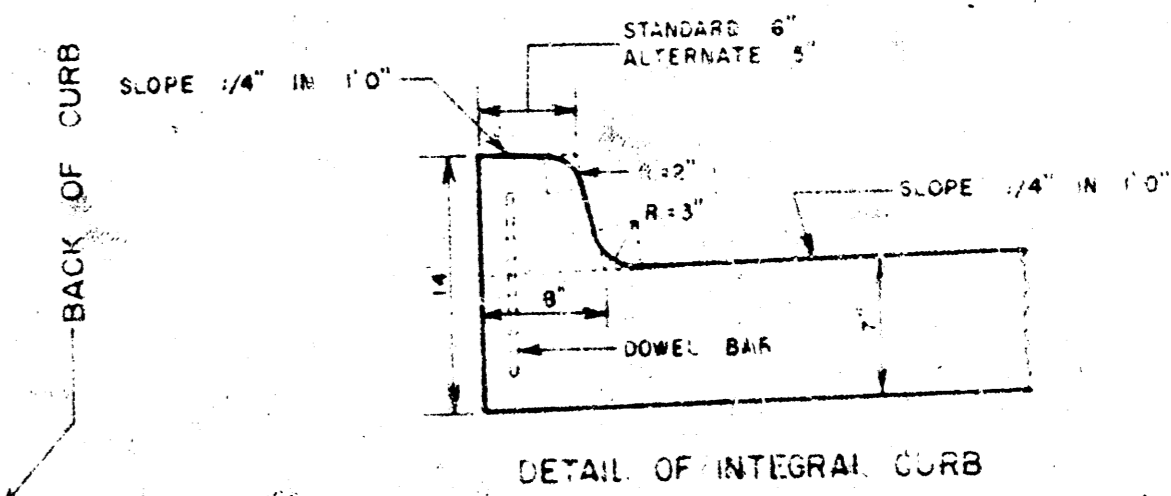
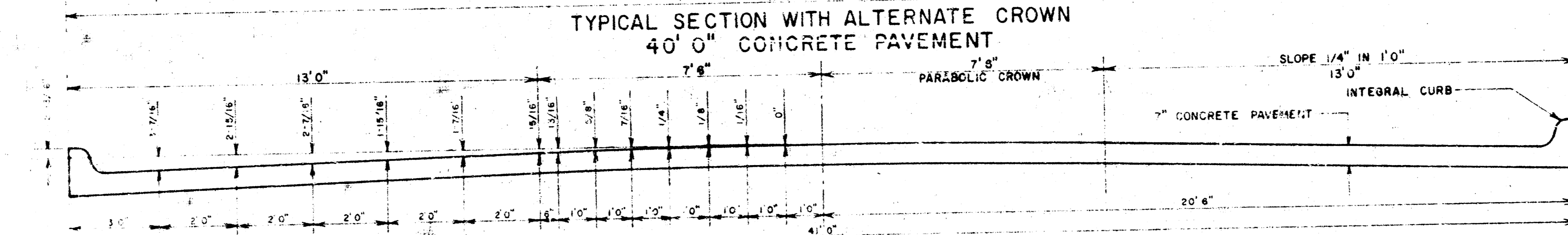
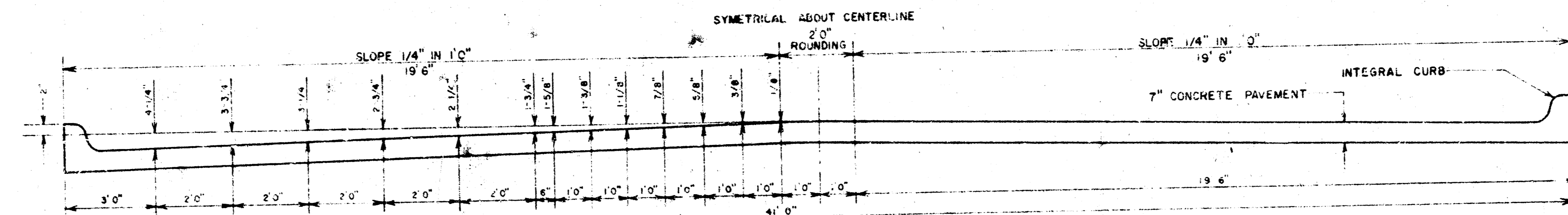
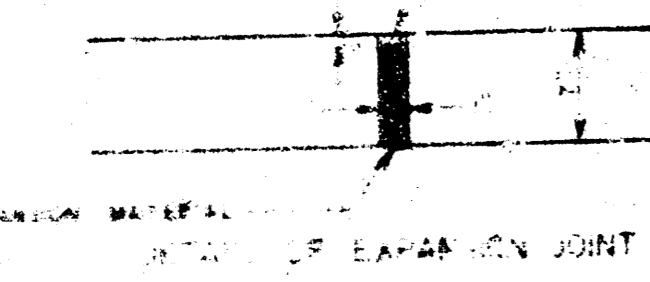
SAWED CONTRACTION JOINTS ARE TO BE CONSTRUCTED AT 20' INTERVALS EXCEPT WHERE AN EXPANSION JOINT IS USED

SEAL WITH SPECIFIED JOINT SEALER

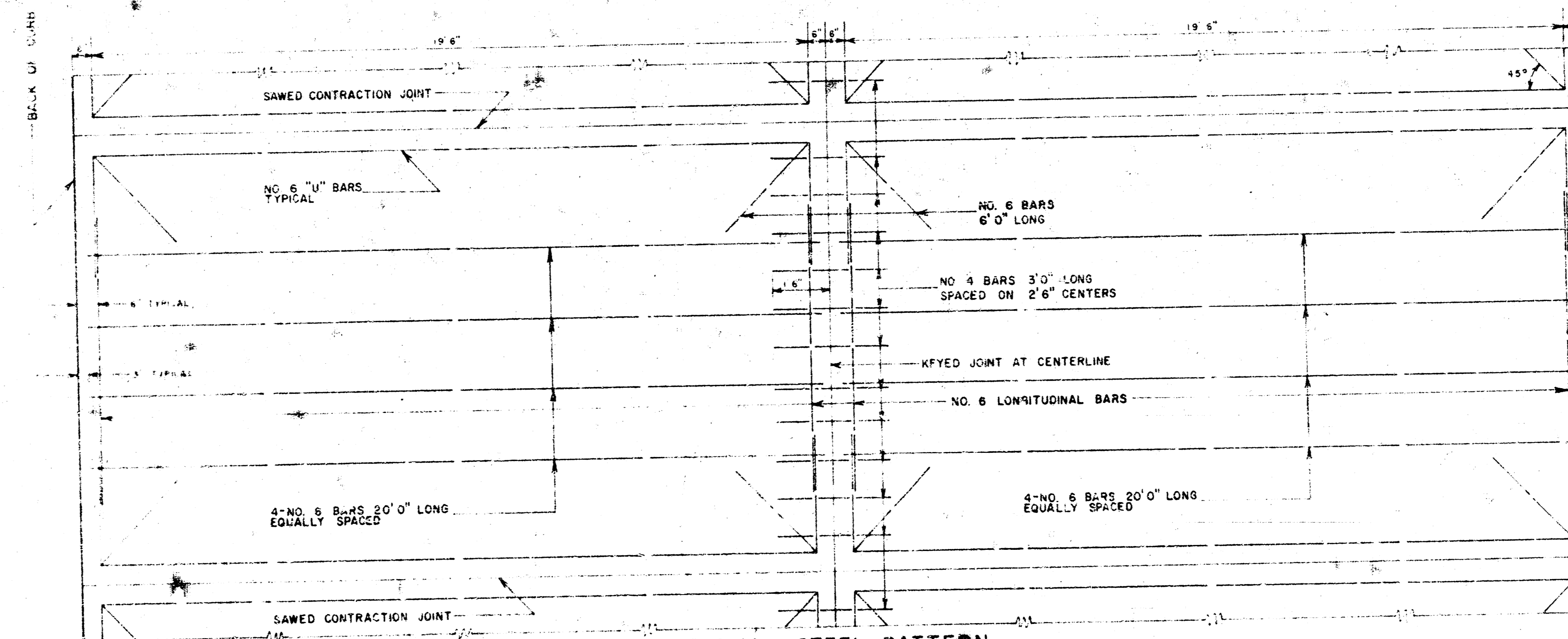


EXPANSION JOINTS ARE TO BE CONSTRUCTED AT MAXIMUM INTERVALS OF 120' 0"

SEAL WITH SPECIFIED JOINT SEALER



INTEGRAL CURB SHALL BE CUT THROUGH TO THE PAVEMENT IN UNIFORM LENGTHS OF NOT MORE THAN TEN FEET INTERVALS BETWEEN EXPANSION JOINTS. EXPANSION JOINTS HAVING THE SAME THICKNESS AS THE EXPANSION JOINTS IN THE PAVEMENT SHALL BE CONSTRUCTED IN THE INTEGRAL CURB AT THE SPECIFIED LOCATIONS. NUMBER 4 OR NUMBER 6 DOWELS SHALL BE INSTALLED IN THE INTEGRAL CURB AS SHOWN ON APPROXIMATELY 2' 6" CENTERS. PAVEMENT GRADES SHOWN ON PLANS ARE FOR STANDARD CROWN.

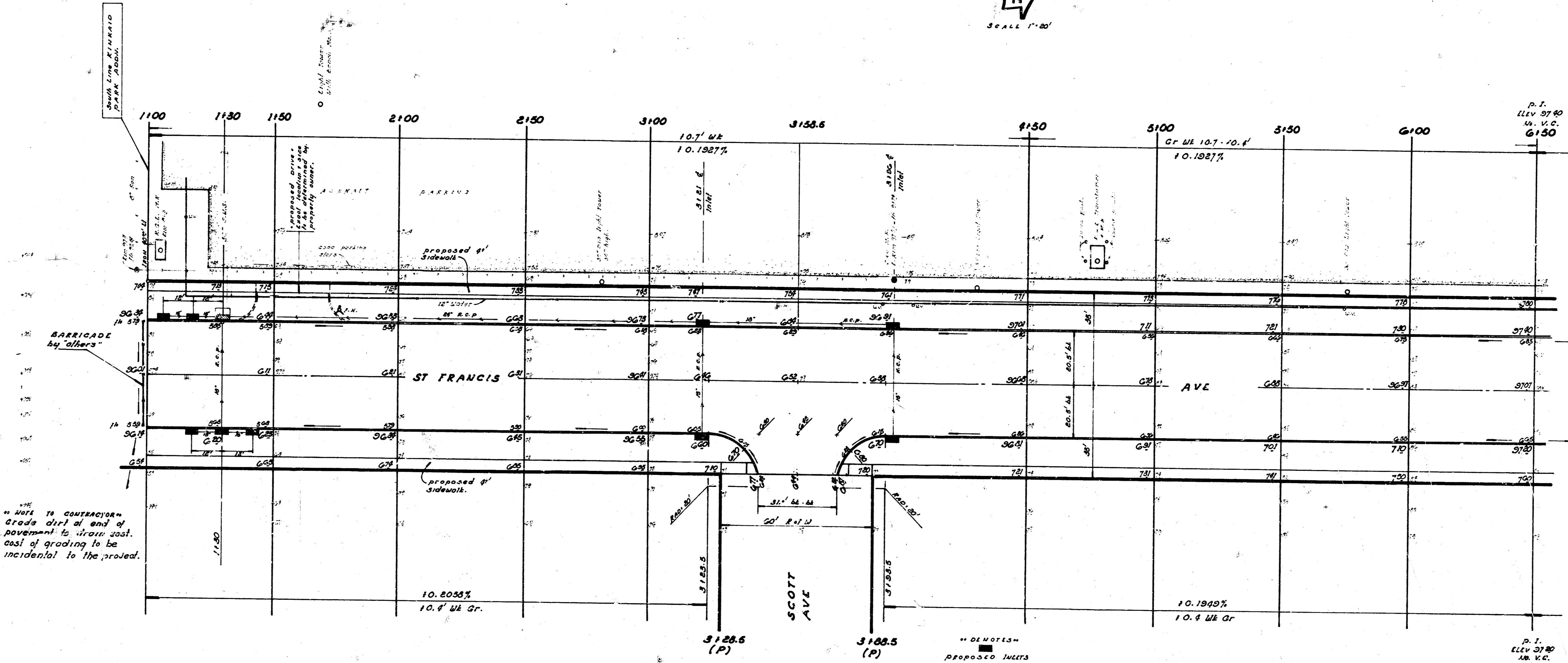


B.M. 1014 10' cut top cone base of Light Tower 68.5' W. of S.L. KINKAID PARK ADDN
and 67.5' W. of M.L. ST FRANCIS AVE.
BASE LINE: 40' E. of M.R.



SCALE 1"=20'

SUNNY APPEAL
11/14/23
11/14/23
11/14/23



NOTE TO CONTRACTOR -
Grade dirt at end of
pavement to drain just
east of grading to be
incidental to the project.

SUBGRADE
Type of subgrade treatment shall be determined by
the field engineer. Subgrade treatment may consist
of lime treatment, cement treatment, subgrade
modification, or any combination of these.

EARTHWORK

"PROPERTY"		"CITY"	
EXC	C. FILL	EXC	C. FILL
2823.8 CU YDS	23.1 CU YDS	123.6 CU YDS	18.8
110% 2823.8	110% 23.1	110% 123.6	110% 18.8
3171.7 CU YDS	25.4 CU YDS	136.2 CU YDS	

SIDEWALK
Grade parking and clear 6' W. for proposed
sidewalk. Compact fill in walk area. Walk to be
constructed by "OTHERS".

ST FRANCIS AVENUE
S.L. PAWNEE AVE to S.L. KINKAID
PARK ADDITION.
40'-0" CONC PAVEMENT and CURB
CITY OF WICHITA, KANSAS
R. W. LINN CITY ENGINEER
DATE NOV-23 PROJ. NO. DAKS 27026

2/6

