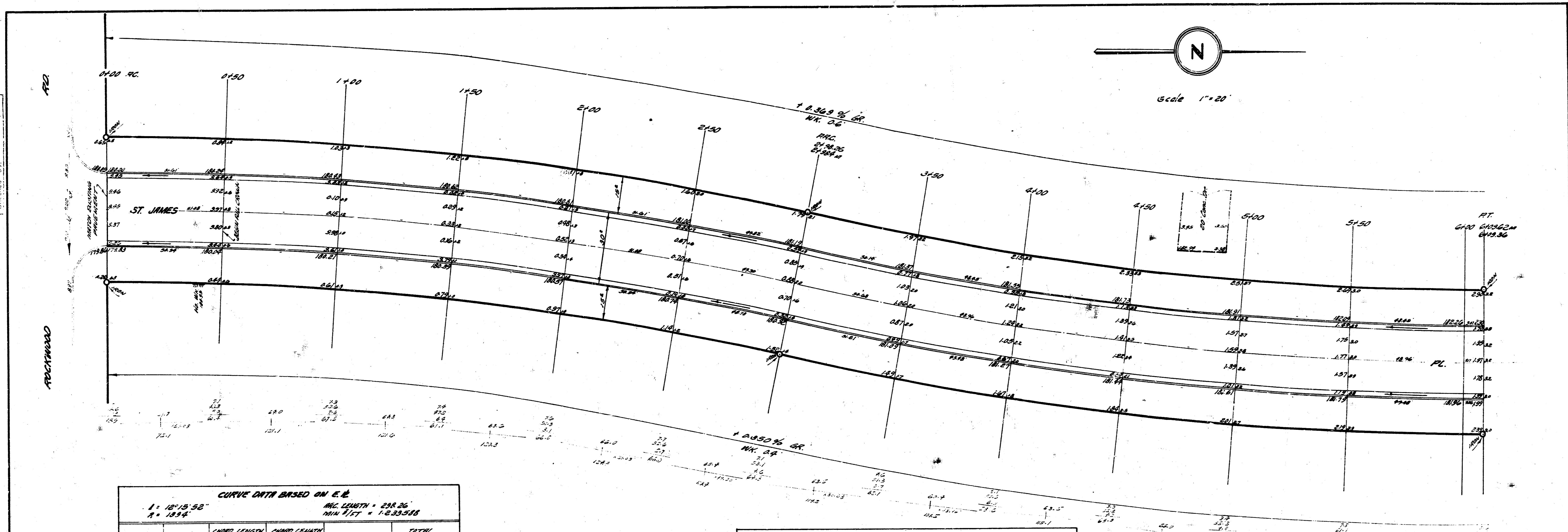


STATION CHANGES
 1. IN CHD 1000
 2. IN CHD 1000
 3. IN CHD 1000



CURVE DATA BASED ON E. R.
 $\Delta = 18'15''$ $R = 1834'$ $ARC LENGTH = 238.26'$ $MIN DIST = 1833.548'$

STATION	ARC LENGTH	CHORD LENGTH S. @ E. C.B. R = 1834'	CHORD LENGTH S. @ N.E.C.B. R = 1834'	DEFLECTION	TOTAL DEFLECTION
PC 0+00	-	-	-	-	-
PT 0+23	23	21.85	21.88	1° 01' 31"	1° 01' 31"
PT 0+46	46	-	-	2° 03' 21"	2° 03' 21"
PT 0+69	69	-	-	3° 05' 08"	3° 05' 08"
PT 0+92	92	-	-	4° 06' 54"	4° 06' 54"
PT 1+15	115	-	-	5° 08' 39"	5° 08' 39"
PT 1+38	138	-	-	6° 10' 26"	6° 10' 26"
PT 1+61	161	-	-	7° 12' 12"	7° 12' 12"
PT 1+84	184	-	-	8° 13' 56"	8° 13' 56"

CURVE DATA BASED ON E. R.
 $\Delta = 18'15''$ $R = 1834'$ $ARC LENGTH = 238.26'$ $MIN DIST = 1833.548'$

STATION	ARC LENGTH	CHORD LENGTH S. @ E. C.B. R = 1834'	CHORD LENGTH S. @ N.E.C.B. R = 1834'	DEFLECTION	TOTAL DEFLECTION
PT 2+07	207	-	-	-	-
PT 2+30	230	-	-	-	-
PT 2+53	253	-	-	-	-
PT 2+76	276	-	-	-	-
PT 2+99	299	-	-	-	-
PT 3+22	322	-	-	-	-
PT 3+45	345	-	-	-	-
PT 3+68	368	-	-	-	-
PT 3+91	391	-	-	-	-
PT 4+14	414	-	-	-	-
PT 4+37	437	-	-	-	-
PT 4+60	460	-	-	-	-
PT 4+83	483	-	-	-	-
PT 5+06	506	-	-	-	-
PT 5+29	529	-	-	-	-
PT 5+52	552	-	-	-	-
PT 5+75	575	-	-	-	-
PT 5+98	598	-	-	-	-

STATION MARK
 1" = 20'
 1/2" = 10'
 1/4" = 5'

3.4. 173.83 " IN RITCHEE E.C. ST. JAMES N.L. RACKWOOD RD.
 3.4. 173.23 " IN CHD 1000 ON BRICK MARK N.L. RACKWOOD RD.
 10' S. OF S.C. CRESTHILL AVENUE.
 3.4. 181.27 " IN CHD. 1000 ON BRICK MARK N.L. CHD. CENTRAL & ST. JAMES.



ST. JAMES PL.
 N.L. RACKWOOD TO S.L. CENTRAL
 26° - 2' - 30" AC.
 CITY OF WICHITA, KANSAS
 B.E. SMITH CITY ENGINEER
 DATE SEPT. 1940 PROJ. NO. C10-52

