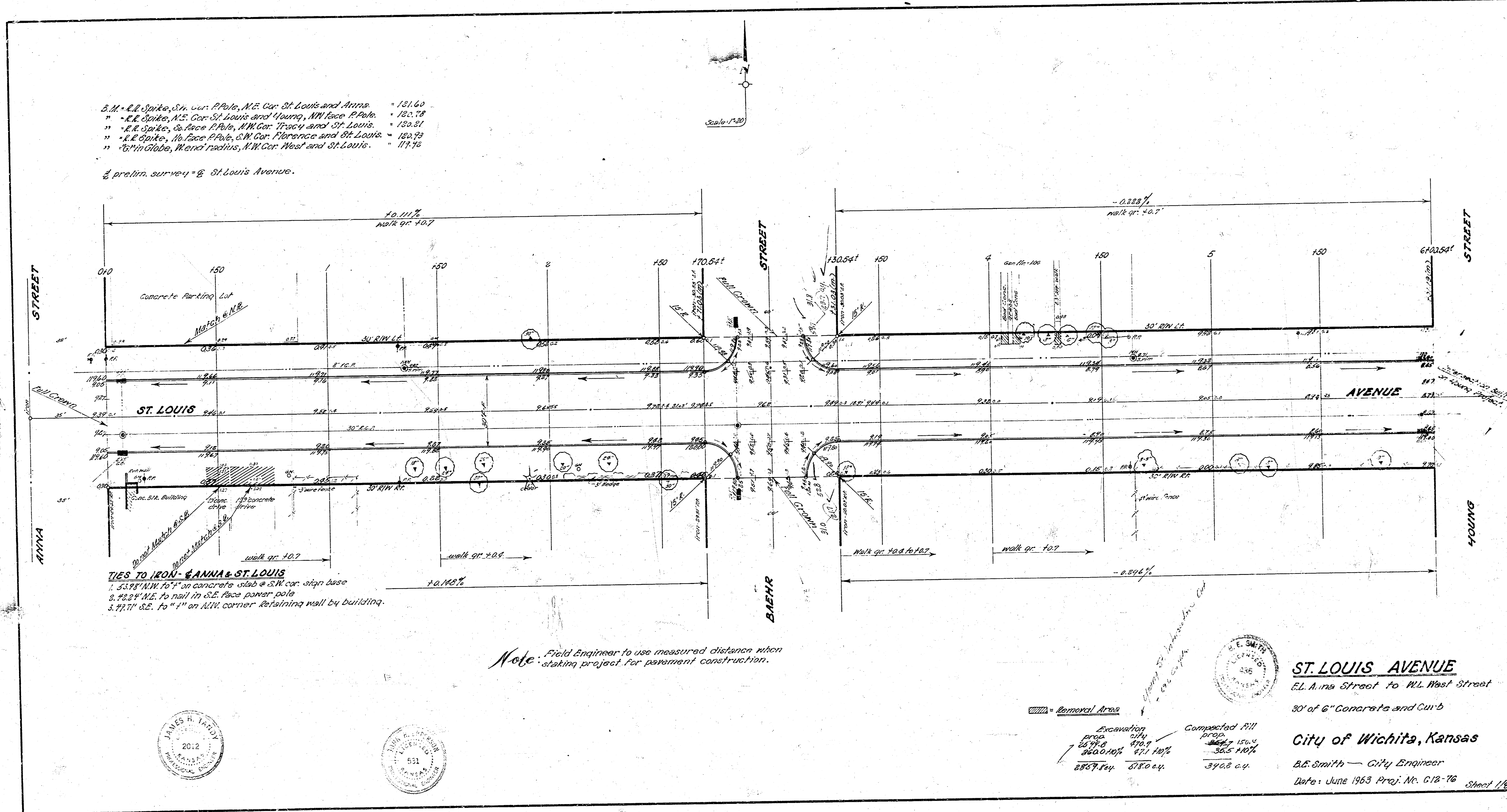


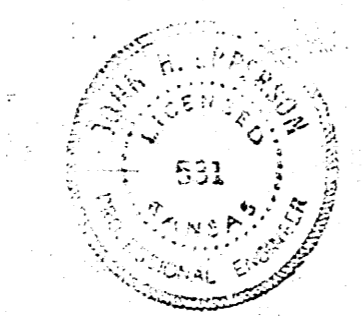
B.M. - E.L. Spike, S.W. cor. P.Pole, N.E. Cor. St. Louis and Anna - 121.60
 " - E.L. Spike, N.E. Cor. St. Louis and Young, N.W. face P.Pole - 120.72
 " - E.L. Spike, S.E. face P.Pole, N.W. Cor. Tracy and St. Louis - 120.21
 " - E.L. Spike, N.W. face P.Pole, S.W. Cor. Florence and St. Louis - 120.73
 " - 5th Glabe, West radius, N.W. Cor. West and St. Louis - 117.75

2/2 prelm. survey @ St. Louis Avenue.

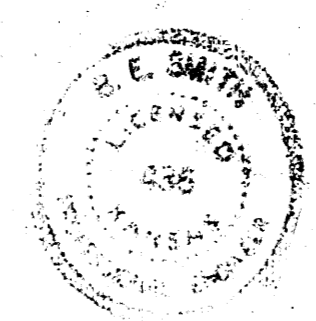


TIES TO IRON - & ANNA - ST. LOUIS
 1. 53.98' N.W. to 4" on concrete slab @ SW cor. sign base
 2. 42.24' N.E. to nail in S.E. face power pole
 3. 77.71' S.E. to 4" on NW corner retaining wall by building.

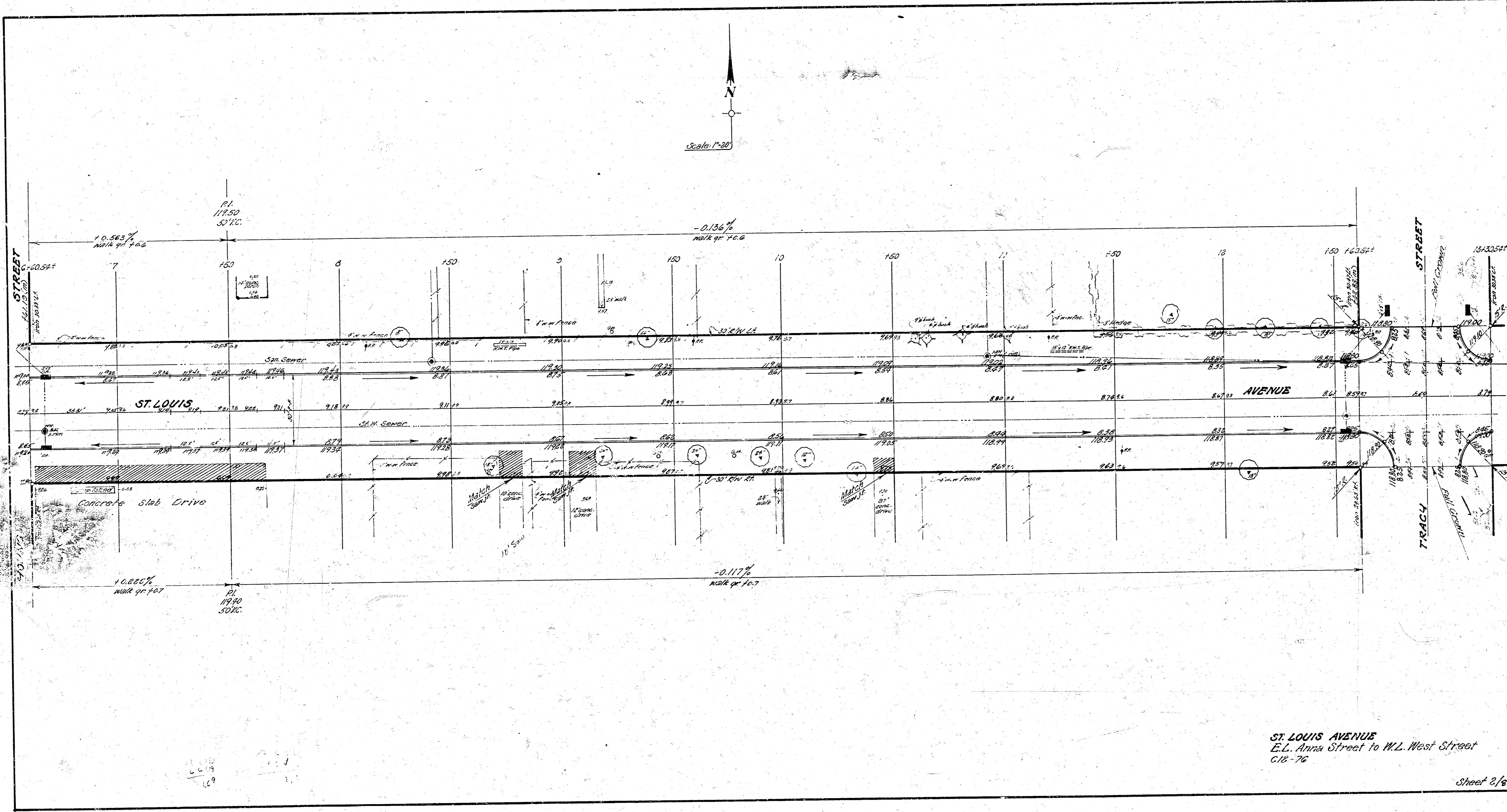
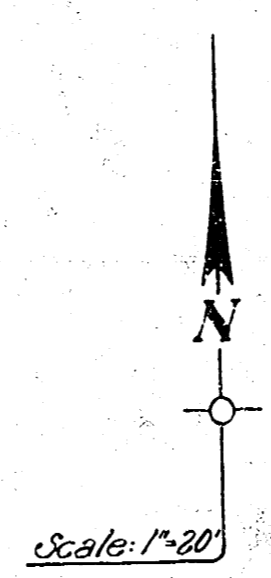
Note: Field Engineer to use measured distance when staking project for pavement construction.



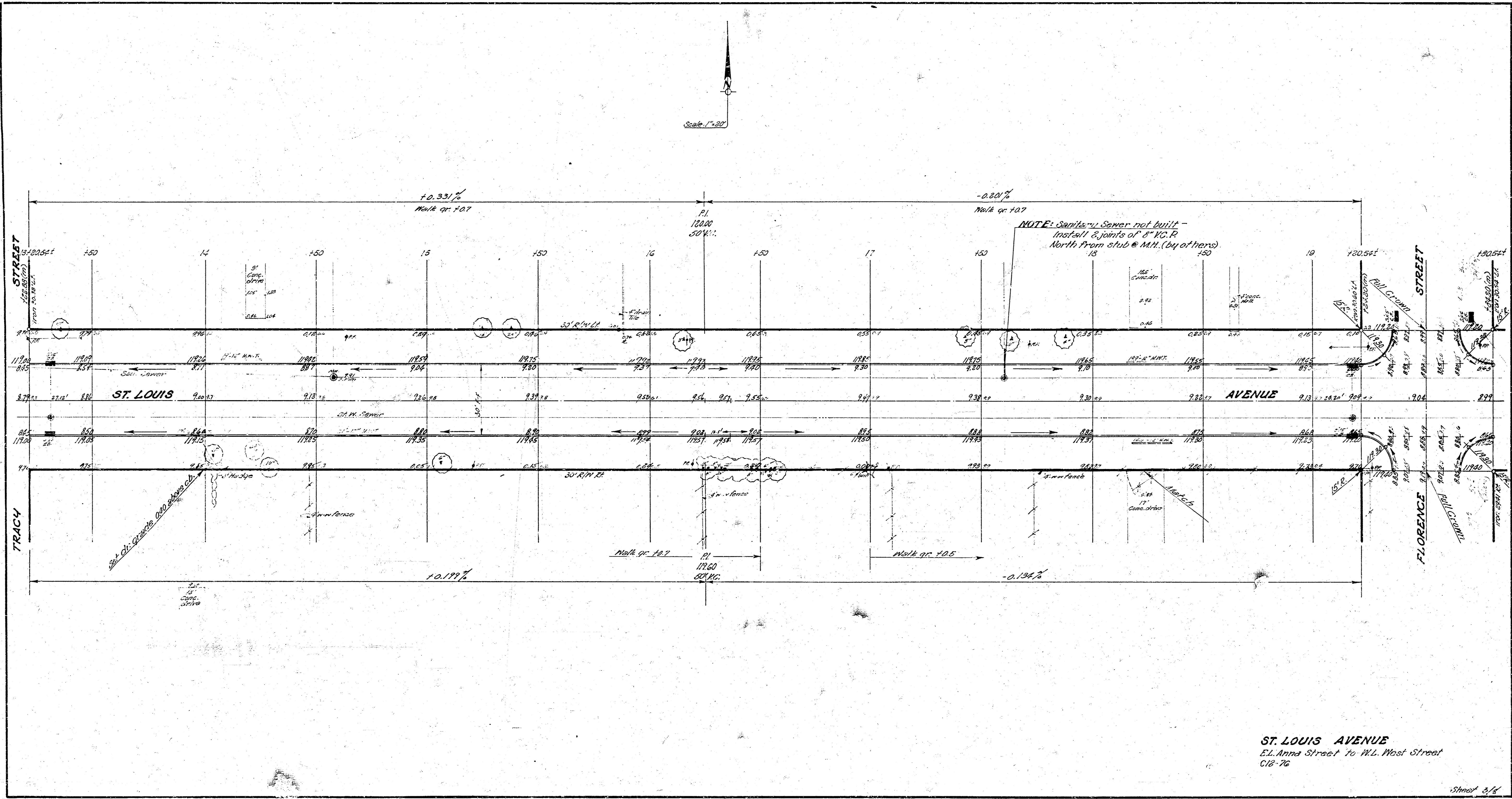
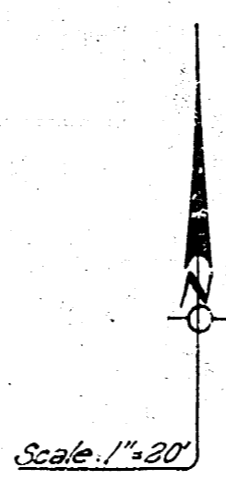
Excavation		Compacted Fill	
prop.	at	prop.	at
2640.10%	170.9	348.5	150.4
2867.84%	1750.4	36.5	110%
		3708.04	

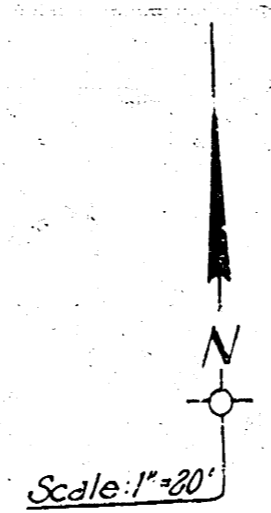


ST. LOUIS AVENUE
 E.L. Anna Street to N.W. West Street
 30' of 6" Concrete and Curb
 City of Wichita, Kansas
 B.S. Smith - City Engineer
 Date: June 1963 Proj. No. G12-76 Sheet 1/4

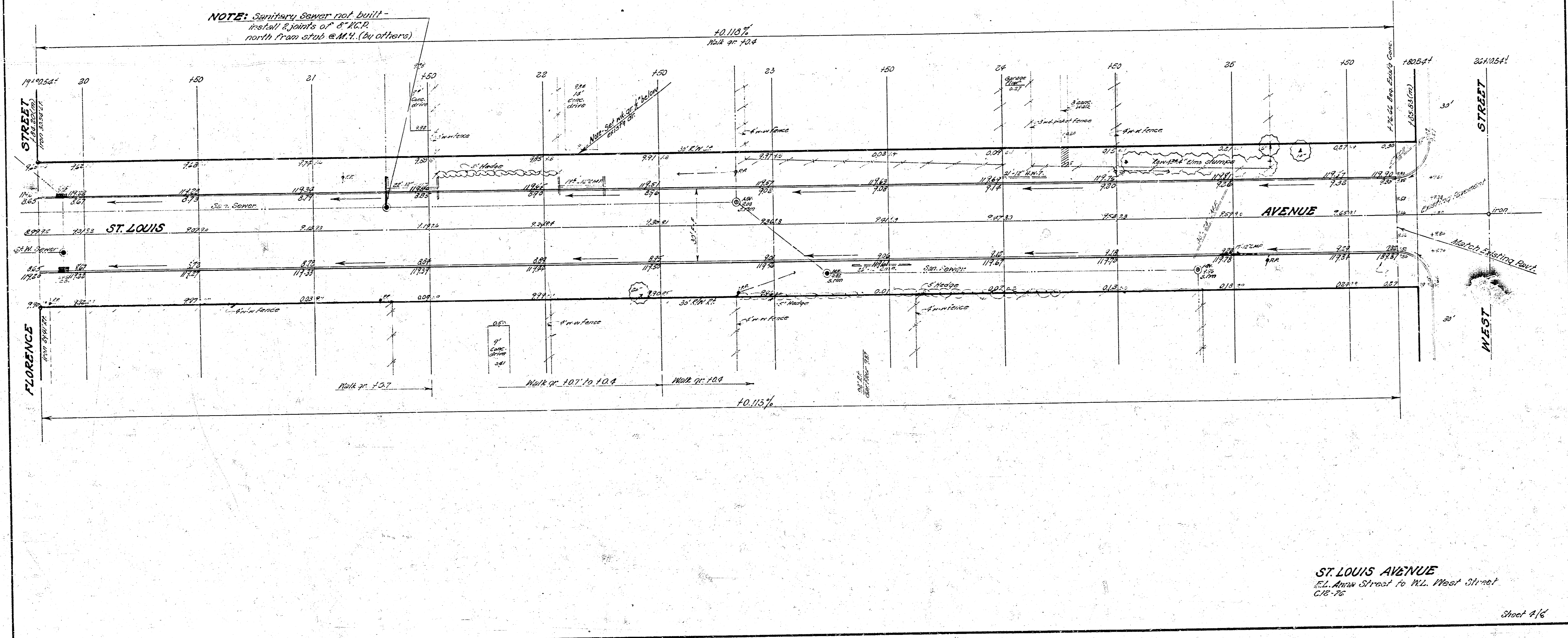


ST. LOUIS AVENUE
E.L. Anna Street to W.L. West Street
C18-76





NOTE: Sanitary Sewer not built -
install 6" joints of 6" K.C.P.
north from stub @ M.H. (by others)



ST. LOUIS AVENUE
E.L. New Street to W.L. West Street
C18-76

Sheet 4/6