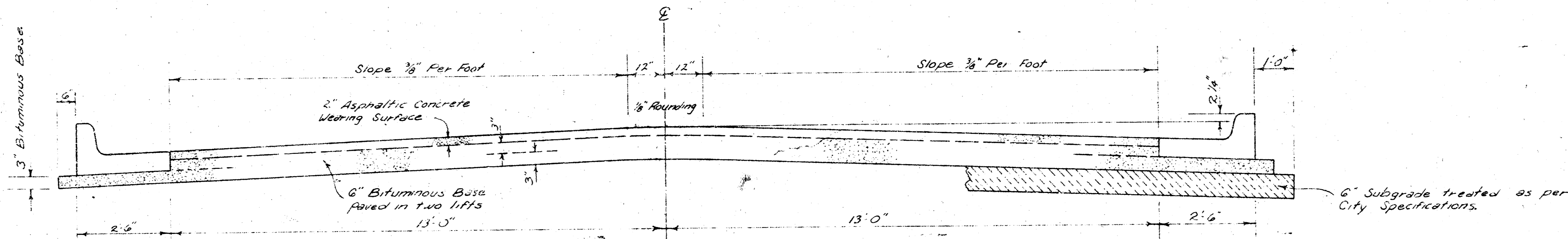


St. LOUIS ST.
 E. L. WEST ST. - E. L. McCOMAS
 472-76-245-80501-000-001
 DAKS577017



TYPICAL SECTION

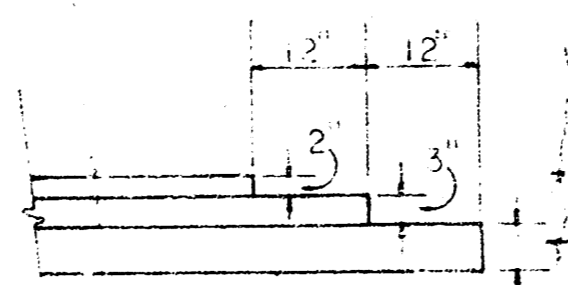
3' ASPHALTIC CONCRETE PAVEMENT WITH BITUMINOUS BASE

The A.C. pavement between the Comb. Curb & Gutter shall be paid as 3a.10s. 5" A.C. Pavement (6" Bituminous Base). The Bituminous Base under the Comb. Curb & Gutter shall be paid as 3a.10s. 3" Bituminous Base.

A TACK COAT OF EMULSIFIED ASPHALT (SS-IH) SHALL BE APPLIED AT AN APPROXIMATE RATE OF 0.05 GALLONS PER SQ. YD. BETWEEN LIFTS OF ASPHALTIC MATERIALS WHEN ORDERED BY THE ENGINEER. TACK COAT WILL NOT BE PAID FOR DIRECTLY AND SHALL BE CONSIDERED AS SUBSIDIARY TO PRICE BID FOR ASPHALTIC PAVEMENT.

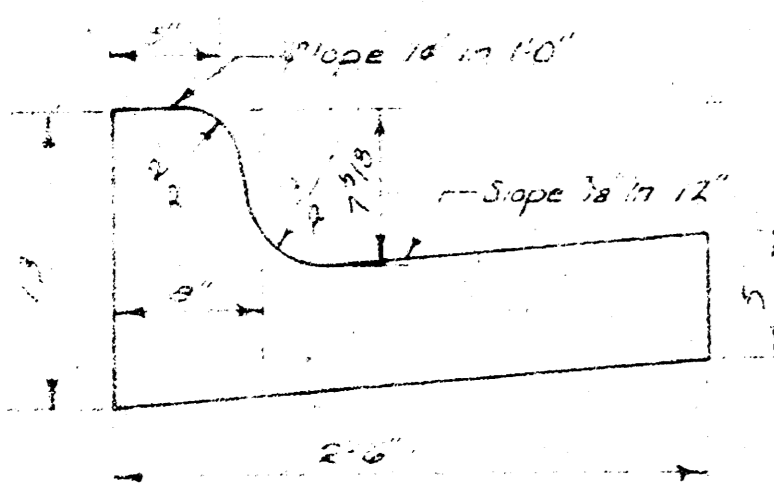
BITUMINOUS BASE AND ASPHALTIC CONCRETE WEARING SURFACE SHALL BE PLACED WITH A LAYDOWN MACHINE HAVING AUTOMATIC ELECTRONIC CONTROLS FOR CROWN AND GRADE. CONSTRUCTION JOINTS IN EACH LIFT SHALL BE STAGGERED A MINIMUM DISTANCE OF 1' WITH JOINTS IN PRECEDING LIFTS AND SUCH THAT A JOINT WILL BE CONSTRUCTED ON THE PAVEMENT CENTERLINE IN THE TOP LIFT.

DETAIL OF TRANSVERSE CONSTRUCTION JOINTS

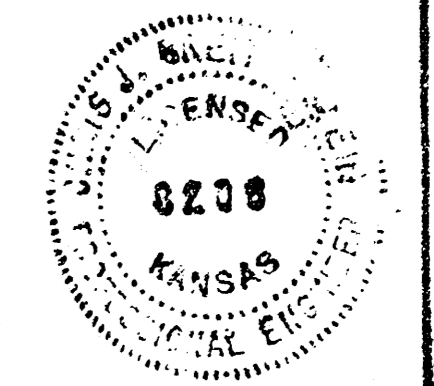
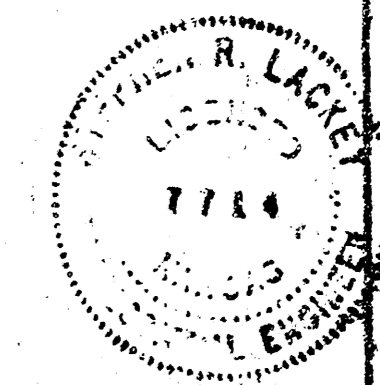
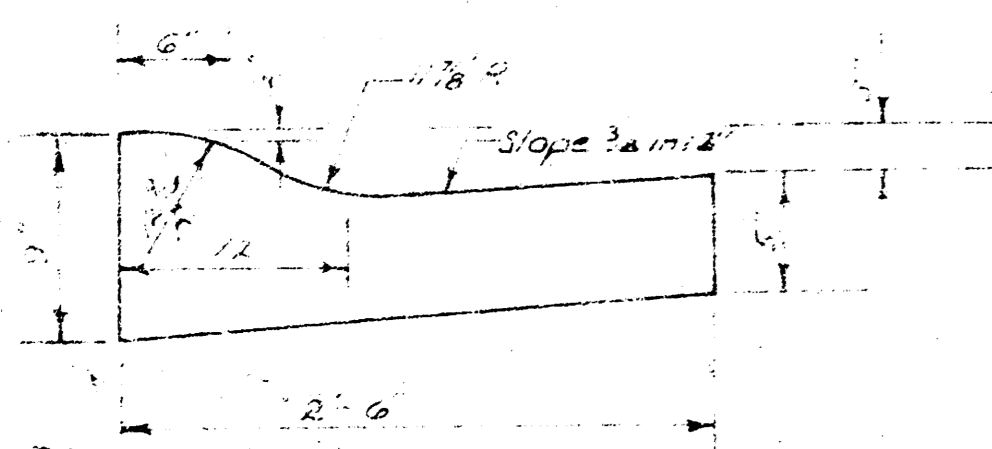


TRANSVERSE CONSTRUCTION JOINTS SHALL BE CONSTRUCTED IN FLEXIBLE BASE PAVEMENTS AT LOCATIONS WHERE PAVEMENT TEMPORARILY ENDS TO FACILITATE FUTURE PAVEMENT CONSTRUCTION AS SHOWN BY DETAIL. THE COST OF CONSTRUCTING THE TRANSVERSE CONSTRUCTION JOINTS SHALL NOT BE MEASURED OR PAID FOR DIRECTLY BUT SHALL BE INCLUDED IN THE BID PRICE FOR SQUARE YARDS OF ASPHALTIC CONCRETE PAVEMENT.

COMBINED CURB & GUTTER



ROLL TYPE CURB & GUTTER



CITY OF WICHITA, KANSAS

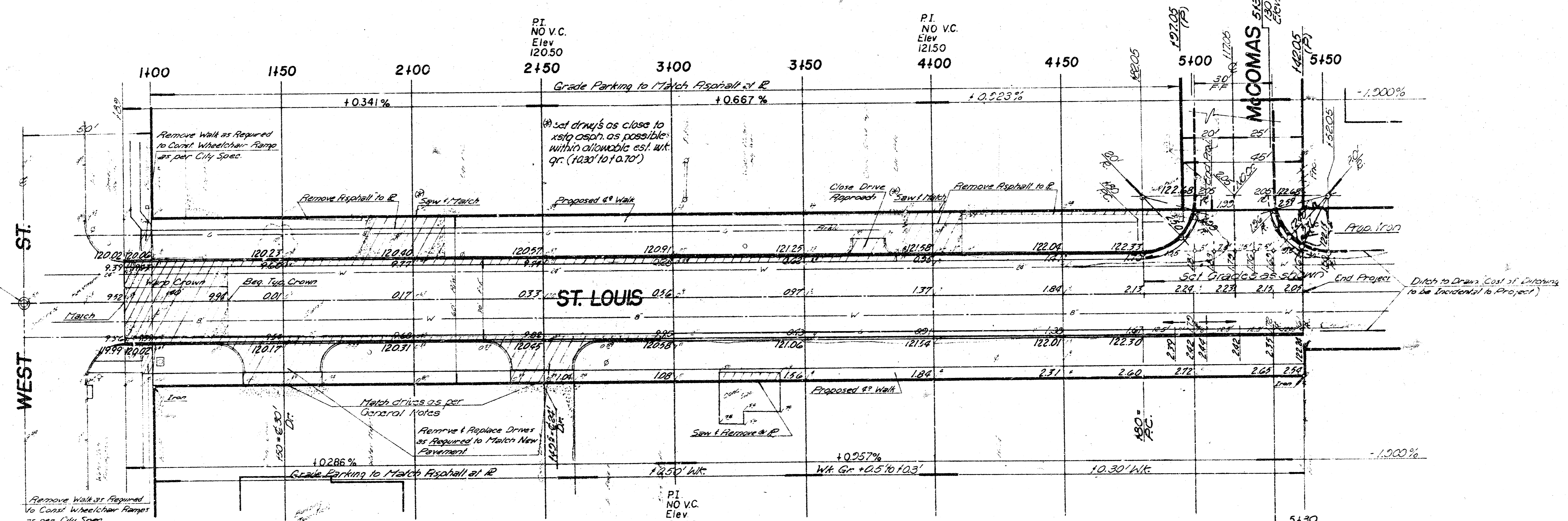
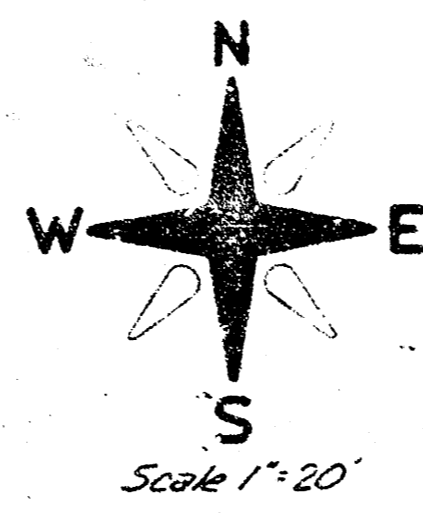
DEPARTMENT OF PUBLIC WORKS — ENGINEERING

R. W. Bruggeman Director Of Engineering / City Engineer

DATE _____ PROJ. NO. _____

1/2

B.M. 12200 City Bench Mark Disc 44' N + 92' W of @
Central + West
B.M. 12249 'V' in Mueller S.W. Corner St. Louis + High
@ is @ St. Louis



GENERAL NOTES

1. Existing Drives on S.S. St. Louis - Suit to remain in place. Field Eng. to chk. drs. for elev's + locate as much of the drs. as possible.
2. Note ties to "Iron" @ Sta. 542.05 Me. con. inlets and replace.
3. A maximum 10% soil of 6" Dr. can be used on this proj.

EARTHWORK

	PROPERTY	CITY
Excavation	679.3	77.9
+10%	67.9	7.8
Total	747.2 C.Y.	85.7 C.Y.
Compacted Fill	0.0	0.0
Manipulation	1943.425 Y	1807.5 Y

NOTE TO FIELD ENGINEER'S CONTRACTOR
Check existing and clear right-of-way for proposed work. Contact for any utility lines to be relocated or removed.

ST. LOUIS
E. L. West-E. L. McComas
DAKS577017
472-76-245-80501-000-000-001