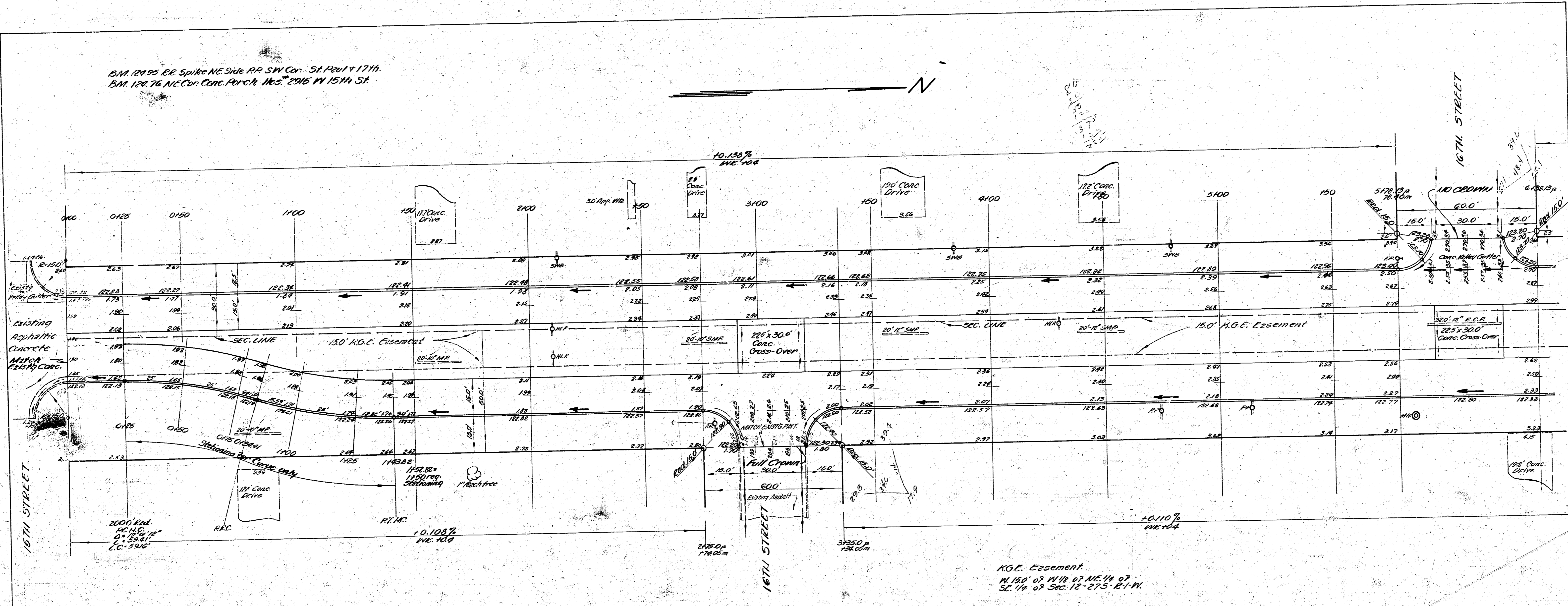
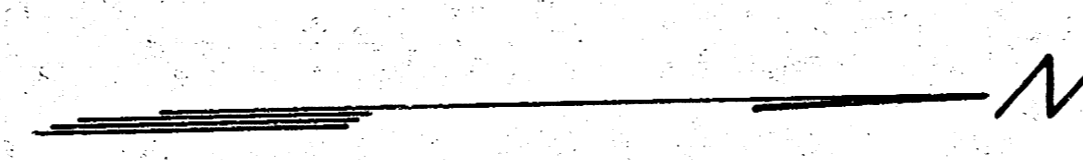


BM 124.95 E.E. Spike NE Side RR SW Cor. St. Paul + 17th.
 BM 124.76 NE Cor. Conc. Par. Ch. No. 2 2015 W 15th St.



Station 0+00 to 1+50
 Right of Way
 City Engineer

Stationing	Curve Length	Chord	Chord Bearing	Deflection	Total Deflection
0+00	25.0	23.98	27.36	3° 36' 51"	3° 36' 51"
+25	25.0	23.98	27.36	3° 36' 51"	7° 13' 42"
+50.01	82.1	9.03	10.30	87° 50' 58"	87° 50' 58"
+132.11	15.29	14.21	14.11	2° 11' 53"	89° 62' 51"
+147.40	25.0	23.98	27.36	3° 36' 51"	93° 39' 42"
+172.40	11.82	11.82	14.92	2° 41' 44"	96° 21' 26"

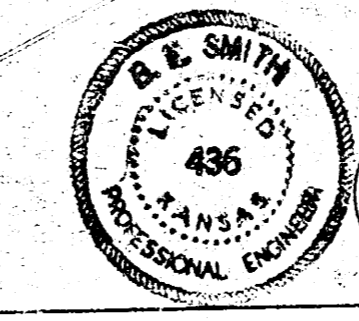
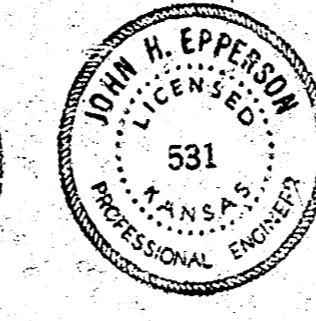
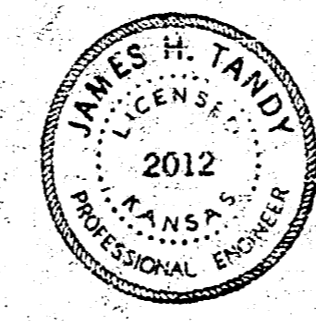
NOTE TO FIELD ENGINEER & CONTRACTOR -
 All castings pipes to be disposed of in accordance
 with City Dept. Ord. 100-100.

NOTE TO FIELD ENGINEER - All IRONS to be
 driven 6" below finished grade.

K.G.E. Easement
 N. 1/4 of N. 1/2 of N. 1/4 of
 Sec. 12 of Sec. 12-275 E-1-N.

FILL
 1100.00 cu. yd.
 6.2 cu. yd.

EXCAVATION
 1100.00 cu. yd.
 182.1 cu. yd.



ST. PAUL AVE.
 S. 15TH ST. to N. 17TH ST.
 150' CONC. & CB ON BOTH
 SIDES K.G.E. EASEMENT

CITY OF WICHITA, KANSAS
 B.E. SMITH CITY ENGINEER
 DATE: MAY 11, 2011 PROJ. NO. C17-60

10.20

