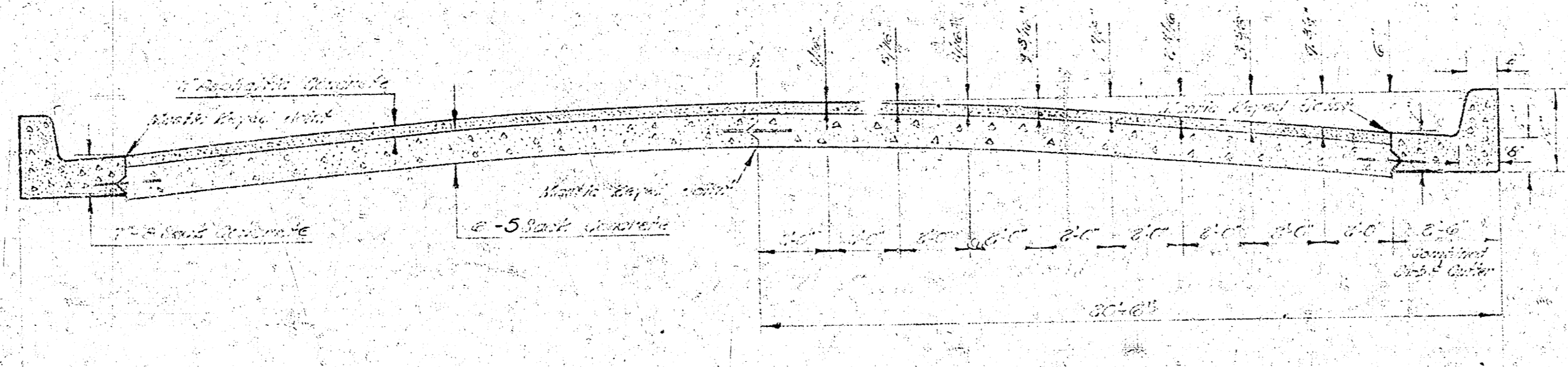
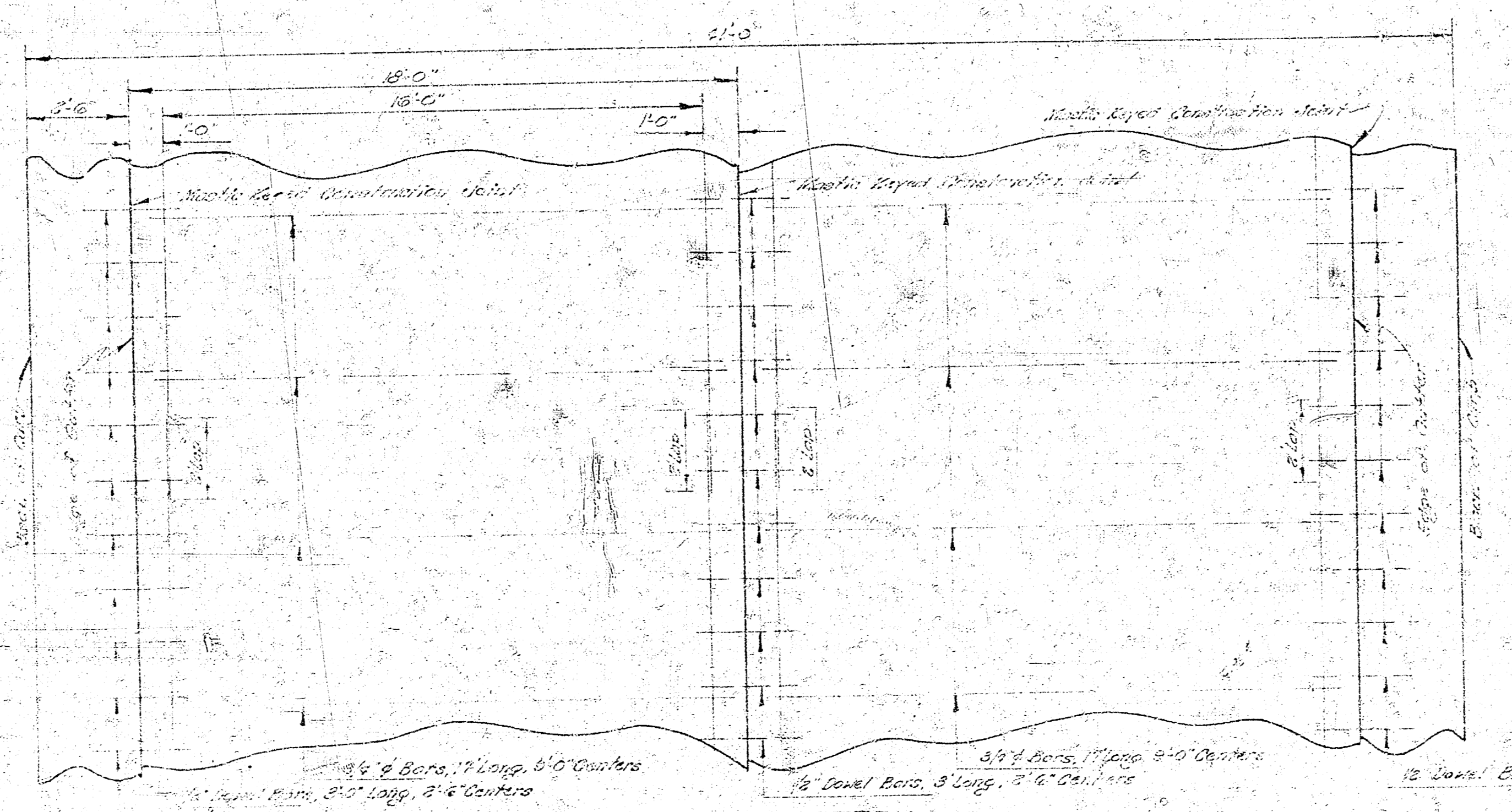


**SABIN STREET**  
 N.L. IRVING STR. TO N.L. AT&S.F. RAILROAD RIGHT-OF-WAY  
 PROJ. NO. C13-68



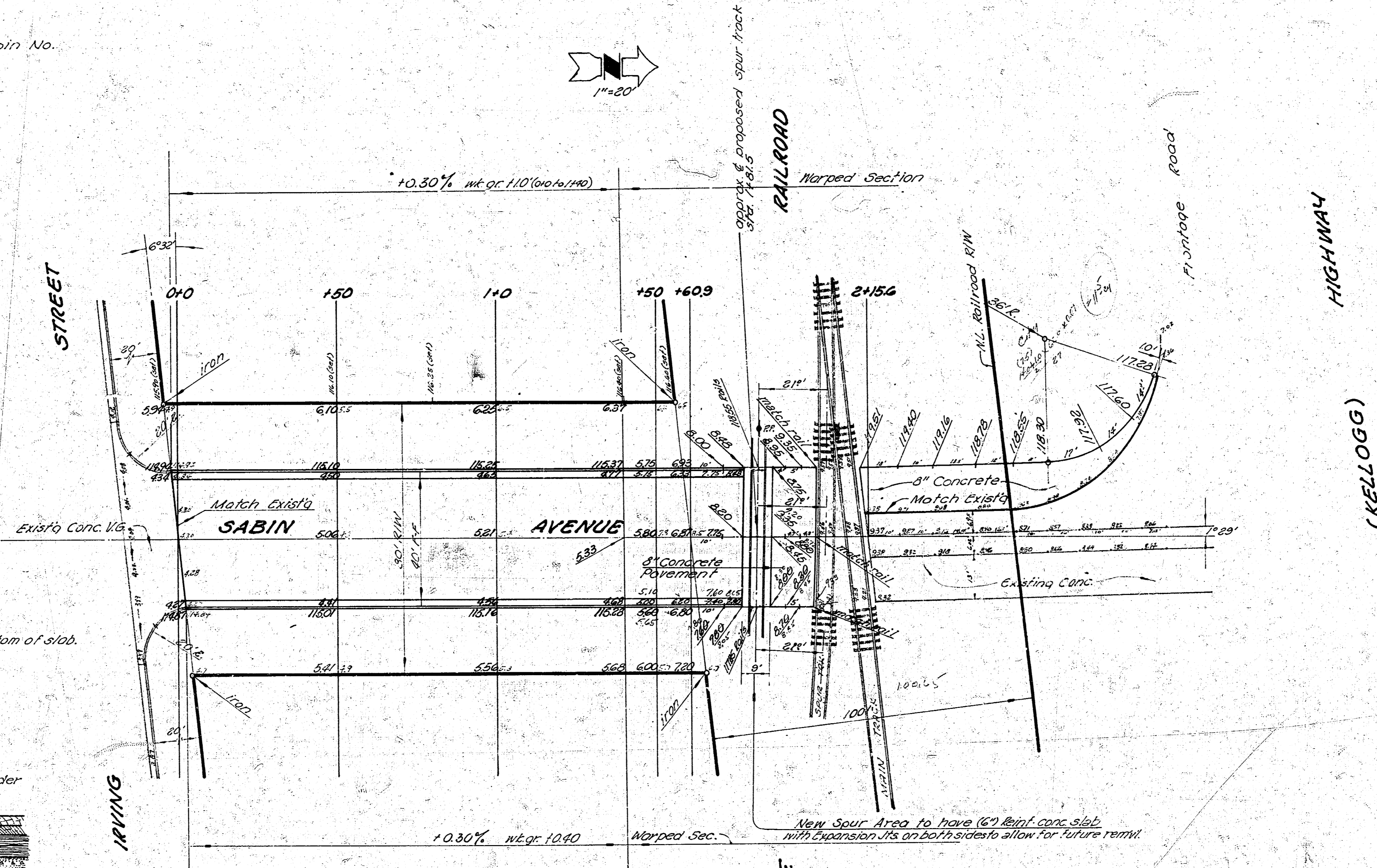
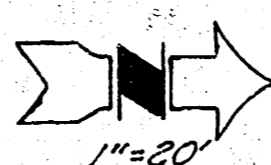
TYPICAL SECTION  
 NOT TO SCALE



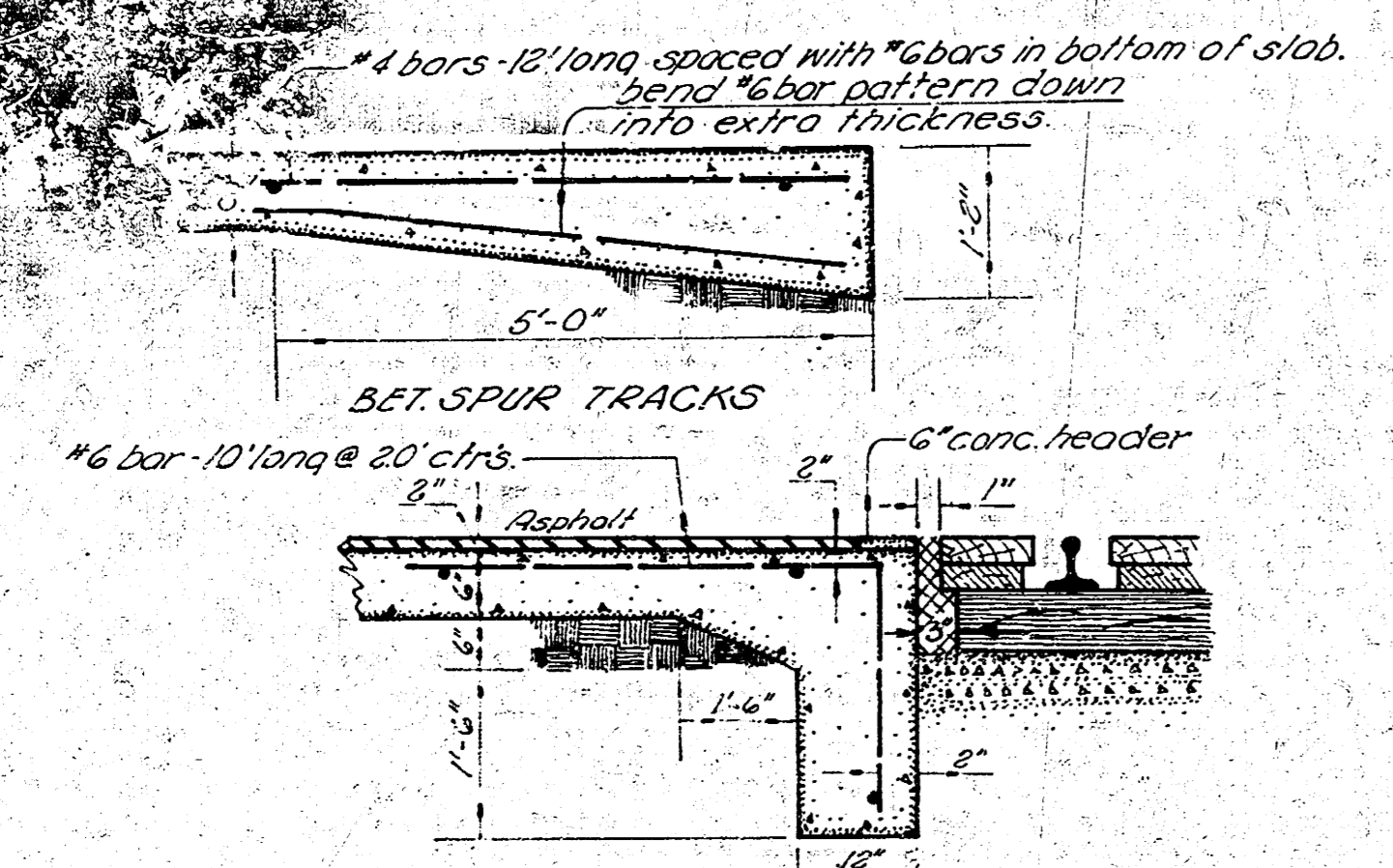
STEEL PATTERN  
 USE 3/4" Ø BARS EXCEPT WHERE NOTED  
 NOT TO SCALE



Sta. 114.53 + to so curb Irving @ Sabin No.  
Base Line = Sabin Avenue



Utility Survey BH 275



So. SIDE NEW SPUR TRACK  
**R.R. TRACK HEADER DETAILS**

**NOTE TO FIELD ENGINEER** - All drive locations & widths to be approved by City Engineer's Office.

EARTHWORK QUANTITIES			
Camp Fill	Excavation		
CITY	PROP.	CITY	PROP.
00	50	11.5	333.5
	50.10%	1.2.10%	33.8.10%
	357 cu.	72.7 cu.	366.9 cu.

**SABIN AVENUE**  
N.L. Irving Street to N.L. A.T. & S.F. Right-of-Way

36'-2'-40" Asphaltic Concrete

City of Wichita, Kansas

B.E. Smith City Engineer

Date: Proj. No. C13-68

