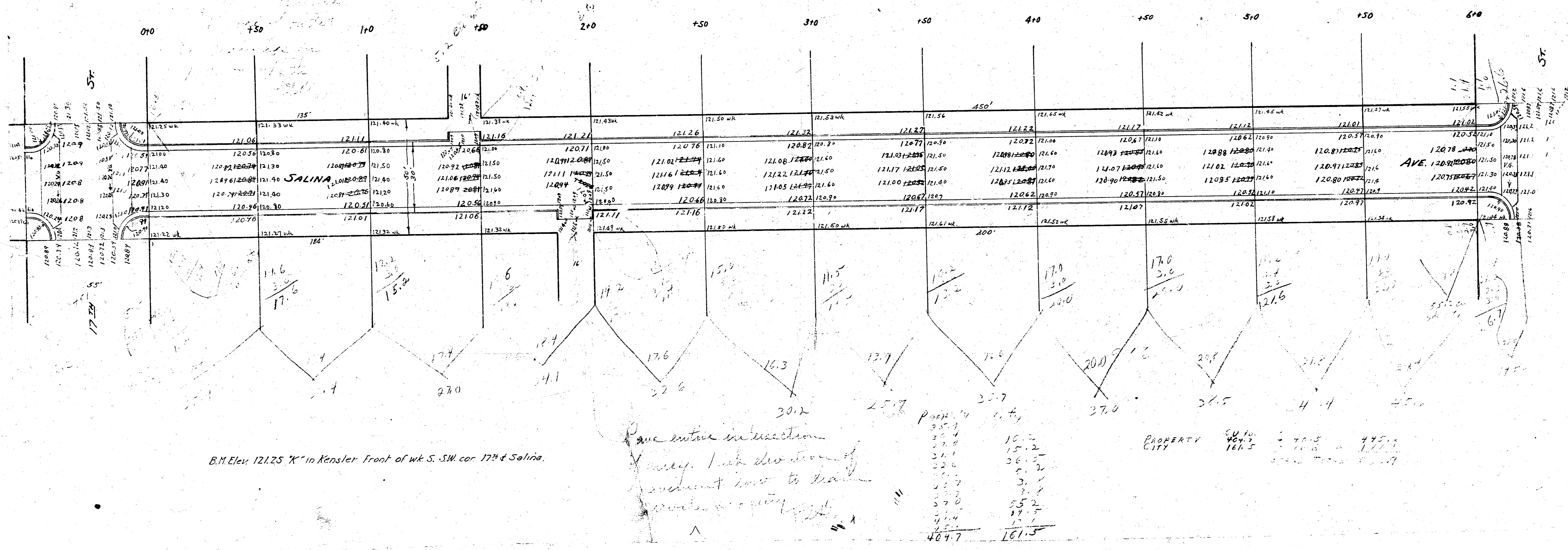


194
125
163

1941
SALINA AVE. - SL. 17TH TO NL. 18TH
COMBINED CURB & GTR
20' PRO-W

H.P.

NOTE: Figures on right of station are ground elevations. Those on left side are grade elevations.



B.M. Elev. 121.25 'X' in Kenster front of blk. S. SW. cor. 17th & Salina.

Have entire intersection survey. With elevation of adjacent low to drain...

PROPERTY CITY

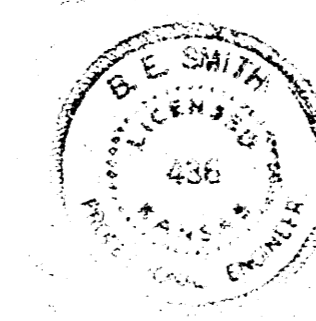
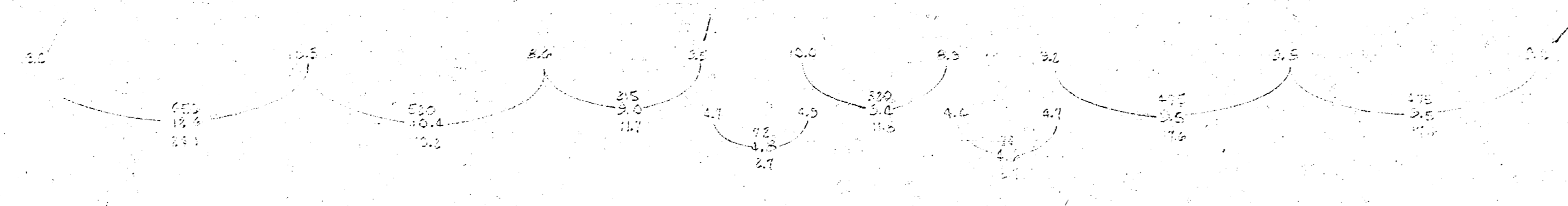
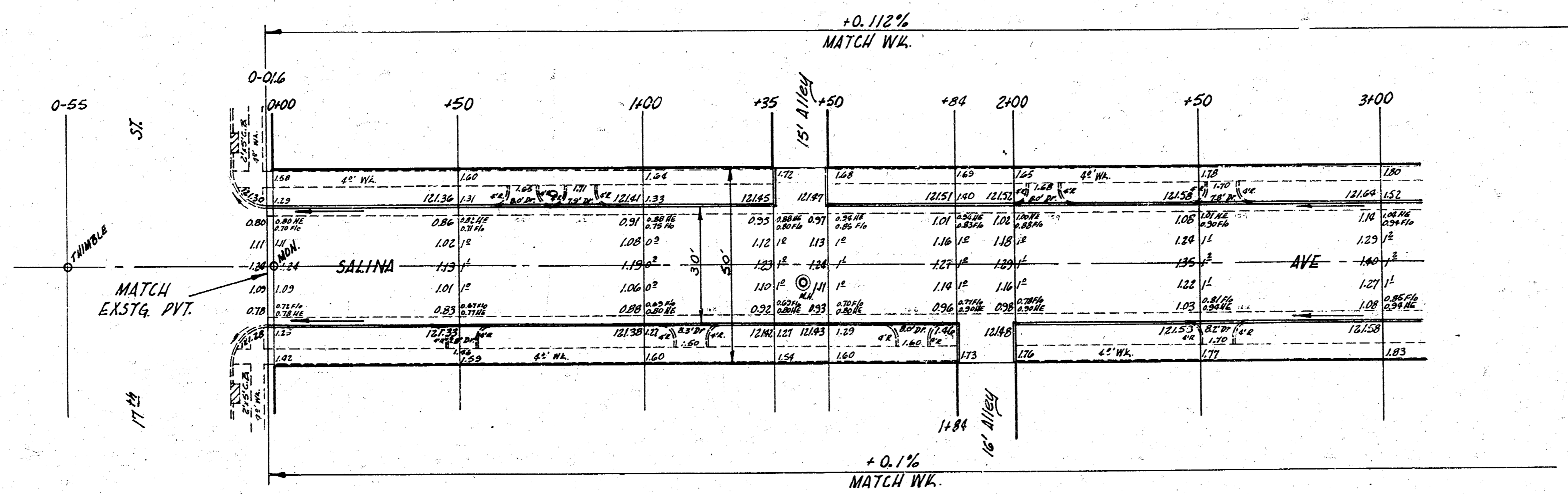
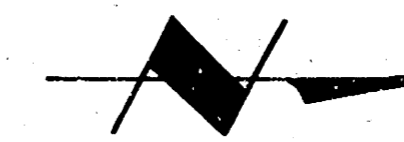
Summary of elevations and widths:

10.2
15.2
26.5
3.2
3.1
3.1
3.1
55.2
14.5
1.1
487.7
161.5

B. M. 121.41 '6" in Globe E.S. Int. of S.E. Cor. 17th & Salina

Chain N. on E

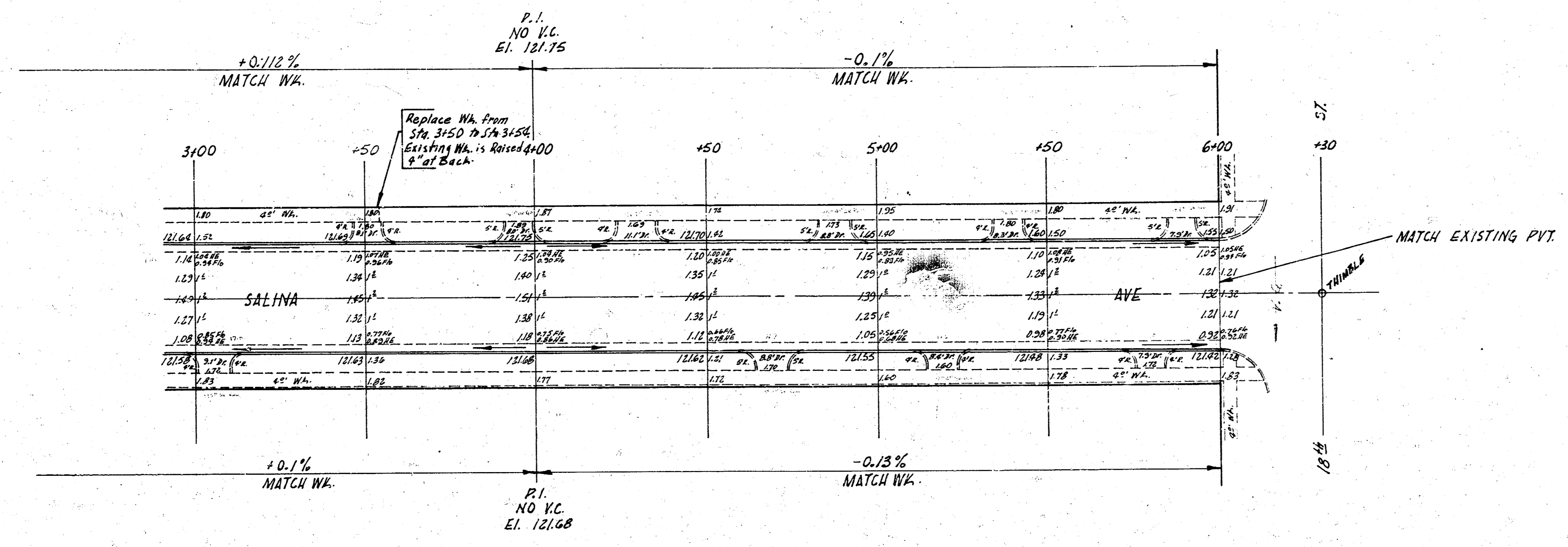
DATE: 10/1/54
 DRAWN BY: B.E. SMITH
 CHECKED BY: J.W. GAYNE



1/2

SALINA AVE.
 N.L. 17th - S.L. 18th
 30' CONC. & C.B.
 CITY OF WICHITA, KANS.
 B.E. SMITH CITY ENGINEER
 OCT., 1954 PROJ. NO. C14-266

10/1/54
 B.E. SMITH
 10/1/54



22

SALINA AVE.
 PROJ. NO. C14-266